

FCC REPORT

Applicant: Shenzhen Junlan Electronic Ltd

Address of Applicant: No.277 PingKui Road, Shijing Community, Pingshan Street, Pingshan New District, Shenzhen

Equipment Under Test (EUT)

Product Name: Karaoke CD-G player

Model No.: STVG888W, STVG888BK, STVG888XX (XX MEANS UNIT COLOR, IT CAN BE A TO Z OR N/A)

Trade Mark: singing machine

FCC ID: OKUSTVG888

Applicable standards: FCC CFR Title 47 Part 15 Subpart C Section 15.249:2014

Date of sample receipt: March 07, 2016

Date of Test: March 07-09, 2016

Date of report issued: March 09, 2016

Test Result : PASS *

* In the configuration tested, the EUT complied with the standards specified above.

Authorized Signature:



Robinson Lo

Laboratory Manager

This report details the results of the testing carried out on one sample. The results contained in this test report do not relate to other samples of the same product and does not permit the use of the GTS product certification mark. The manufacturer should ensure that all products in series production are in conformity with the product sample detailed in this report.

This report may only be reproduced and distributed in full. If the product in this report is used in any configuration other than that detailed in the report, the manufacturer must ensure the new system complies with all relevant standards. Any mention of GTS or testing done by GTS in connection with, distribution or use of the product described in this report must be approved by GTS in writing.

This document cannot be reproduced except in full, without prior written approval of the Company. Any unauthorized alteration, forgery or falsification of the content or appearance of this document is unlawful and offenders may be prosecuted to the fullest extent of the law. Unless otherwise stated the results shown in this test report refer only to the sample(s) tested and such sample(s) are retained for 90 days only.

2 Version

Version No.	Date	Description
00	March 09, 2016	C2PC

Prepared By:

Edward. Pan

Date:

March 09, 2016

Project Engineer

Check By:

Hank. Yan

Date:

March 09, 2016

Reviewer

3 Contents

	Page
1 COVER PAGE.....	1
2 VERSION	2
3 CONTENTS	3
4 TEST SUMMARY	4
5 GENERAL INFORMATION.....	5
5.1 CLIENT INFORMATION	5
5.2 GENERAL DESCRIPTION OF EUT	5
5.3 TEST MODE	7
5.4 DESCRIPTION OF SUPPORT UNITS	7
5.5 TEST FACILITY.....	7
5.6 TEST LOCATION	7
5.7 OTHER INFORMATION REQUESTED BY THE CUSTOMER.....	7
6 TEST INSTRUMENTS LIST	8
7 TEST RESULTS AND MEASUREMENT DATA.....	9
7.1 ANTENNA REQUIREMENT:.....	9
7.2 CONDUCTED EMISSIONS	10
7.3 RADIATED EMISSION METHOD.....	13
7.3.1 <i>Field Strength of The Fundamental Signal</i>	15
7.3.2 <i>Spurious emissions</i>	16
7.3.3 <i>Bandedge emissions</i>	20
8 TEST SETUP PHOTO	21
9 EUT CONSTRUCTIONAL DETAILS	23

4 Test Summary

Test Item	Section in CFR 47	Result
Antenna requirement	15.203	Pass
AC Power Line Conducted Emission	15.207	Pass
Field strength of the fundamental signal	15.249 (a)	Pass
Spurious emissions	15.249 (a) (d)/15.209	Pass
Band edge	15.249 (d)/15.205	Pass
20dB Occupied Bandwidth	15.215 (c)	N/A

Pass: The EUT complies with the essential requirements in the standard.

5 General Information

5.1 Client Information

Applicant:	Shenzhen Junlan Electronic Ltd
Address of Applicant:	No.277 PingKui Road, Shijing Community, Pingshan Street, Pingshan New District, Shenzhen
Manufacturer/Factory:	Shenzhen Junlan Electronic Ltd
Address of Manufacturer/Factory:	No.277 PingKui Road, Shijing Community, Pingshan Street, Pingshan New District, Shenzhen

5.2 General Description of EUT

Product Name:	Karaoke CD-G player
Model No.:	STVG888W, STVG888BK, STVG888XX (XX MEANS UNIT COLOR, I CAN BE A TO Z OR N/A)
Operation Frequency:	2402MHz~2480MHz
Channel numbers:	79
Channel separation:	1MHz
Modulation type:	GFSK, Pi/4 QPSK,8DPSK
Antenna Type:	PCB Antenna
Antenna gain:	2dBi
Power supply:	Adapter: Model No.: GKYPB0300 120US Input: AC 100-240V, 1A Max., 50/60Hz Output: DC 12V, 3A

Operation Frequency each of channel							
Channel	Frequency	Channel	Frequency	Channel	Frequency	Channel	Frequency
1	2402MHz	21	2422MHz	41	2442MHz	61	2462MHz
2	2403MHz	22	2423MHz	42	2443MHz	62	2463MHz
⋮	⋮	⋮	⋮	⋮	⋮	⋮	⋮
19	2420MHz	39	2440MHz	59	2460MHz	79	2480MHz
20	2421MHz	40	2441MHz	60	2461MHz		

Note:

In section 15.31(m), regards to the operating frequency range over 10 MHz, the Lowest frequency, the middle frequency, and the highest frequency of channel were selected to perform the test, and the selected channel see below:

Channel	Frequency
The lowest channel	2402MHz
The middle channel	2441MHz
The Highest channel	2480MHz

5.3 Test mode

Transmitting mode	Keep the EUT in continuously transmitting mode with GFSK modulation.
<p><i>Remark: During the test, the test voltage was tuned from 85% to 115% of the nominal rated supply voltage, and found that the worst case was under the nominal rated supply condition. So the report just shows that condition's data.</i></p>	

Final Test Mode:

The EUT was tested in GFSK, Pi/4QPSK, 8DPSK modulation, and found the GFSK modulation is the worst case.

According to ANSI C63.4 standards, the test results are both the "worst case" and "worst setup":

Y axis (see the test setup photo)

5.4 Description of Support Units

N/A

5.5 Test Facility

The test facility is recognized, certified, or accredited by the following organizations:

- **FCC —Registration No.: 600491**

Global United Technology Services Co., Ltd., Shenzhen EMC Laboratory has been registered and fully described in a report filed with the (FCC) Federal Communications Commission. The acceptance letter from the FCC is maintained in files. Registration 600491, June 28, 2013.

- **Industry Canada (IC) —Registration No.: 9079A-2**

The 3m Semi-anechoic chamber of Global United Technology Services Co., Ltd. has been registered by Certification and Engineering Bureau of Industry Canada for radio equipment testing with Registration No.: 9079A-2, June 26, 2013.

5.6 Test Location

All tests were performed at:

Global United Technology Services Co., Ltd.

Address: No. 301-309, 3/F., Jinyuan Business Building, No.2, Laodong Industrial Zone, Xixiang Road, Baoan District, Shenzhen, Guangdong, China

Tel: 0755-27798480

Fax: 0755-27798960

5.7 Other Information Requested by the Customer

None.

6 Test Instruments list

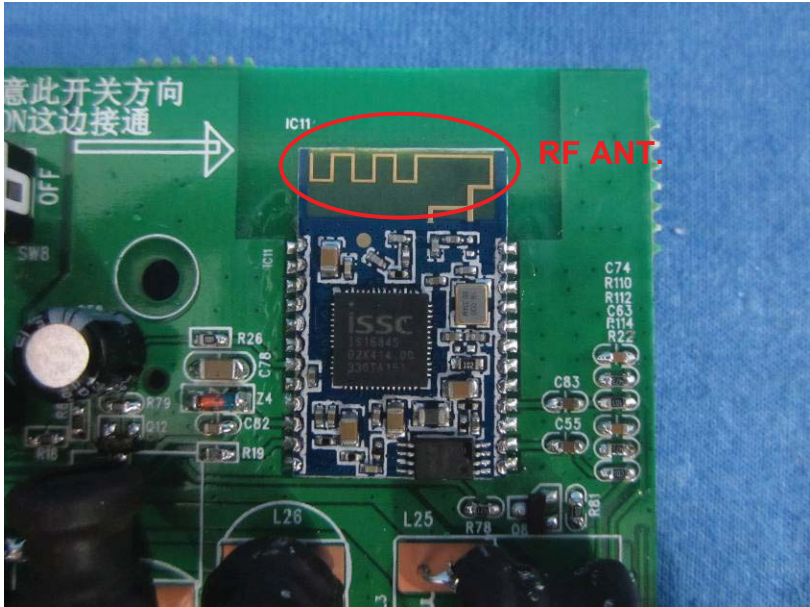
Radiated Emission:						
Item	Test Equipment	Manufacturer	Model No.	Inventory No.	Cal.Date (mm-dd-yy)	Cal.Due date (mm-dd-yy)
1	3m Semi- Anechoic Chamber	ZhongYu Electron	9.2(L)*6.2(W)* 6.4(H)	GTS250	Mar. 27 2015	Mar. 26 2016
2	Control Room	ZhongYu Electron	6.2(L)*2.5(W)* 2.4(H)	GTS251	N/A	N/A
3	Spectrum Analyzer	Agilent	E4440A	GTS533	Dec. 03 2015	Dec. 02 2016
4	EMI Test Receiver	Rohde & Schwarz	ESU26	GTS203	Jun. 30 2015	Jun. 29 2016
5	BiConiLog Antenna	SCHWARZBECK MESS-ELEKTRONIK	VULB9163	GTS214	Feb. 21 2016	Feb. 21 2017
6	Double -ridged waveguide horn	SCHWARZBECK MESS-ELEKTRONIK	9120D-829	GTS208	June 26 2015	June 25 2016
7	Horn Antenna	ETS-LINDGREN	3160	GTS217	Mar. 27 2015	Mar. 26 2016
8	EMI Test Software	AUDIX	E3	N/A	N/A	N/A
9	Coaxial Cable	GTS	N/A	GTS213	Mar. 27 2015	Mar. 26 2016
10	Coaxial Cable	GTS	N/A	GTS211	Mar. 27 2015	Mar. 26 2016
11	Coaxial cable	GTS	N/A	GTS210	Mar. 27 2015	Mar. 26 2016
12	Coaxial Cable	GTS	N/A	GTS212	Mar. 27 2015	Mar. 26 2016
13	Amplifier(100kHz-3GHz)	HP	8347A	GTS204	Jun. 30 2015	Jun. 29 2016
14	Amplifier(2GHz-20GHz)	HP	8349B	GTS206	Jun. 30 2015	Jun. 29 2016
15	Amplifier (18-26GHz)	Rohde & Schwarz	AFS33-18002 650-30-8P-44	GTS218	June 26 2015	June 25 2016
16	Band filter	Amindeon	82346	GTS219	Mar. 28 2015	Mar. 27 2016

Conducted Emission:						
Item	Test Equipment	Manufacturer	Model No.	Inventory No.	Cal.Date (mm-dd-yy)	Cal.Due date (mm-dd-yy)
1	Shielding Room	ZhongYu Electron	7.0(L)x3.0(W)x3.0(H)	GTS264	Sep. 06 2015	Sep. 05 2016
2	EMI Test Receiver	Rohde & Schwarz	ESCS30	GTS223	Jun. 30 2015	Jun. 29 2016
3	10dB Pulse Limita	Rohde & Schwarz	N/A	GTS224	Jun. 30 2015	Jun. 29 2016
4	Coaxial Switch	ANRITSU CORP	MP59B	GTS225	Jun. 30 2015	Jun. 29 2016
5	LISN	SCHWARZBECK MESS-ELEKTRONIK	NSLK 8127	GTS226	Jun. 30 2015	Jun. 29 2016
6	Coaxial Cable	GTS	N/A	GTS227	Jun. 30 2015	Jun. 29 2016
7	EMI Test Software	AUDIX	E3	N/A	N/A	N/A

General used equipment:						
Item	Test Equipment	Manufacturer	Model No.	Inventory No.	Cal.Date (dd-mm-yy)	Cal.Due date (dd-mm-yy)
1	Barometer	ChangChun	DYM3	GTS257	July 07 2015	July 06 2016

7 Test results and Measurement Data

7.1 Antenna requirement:

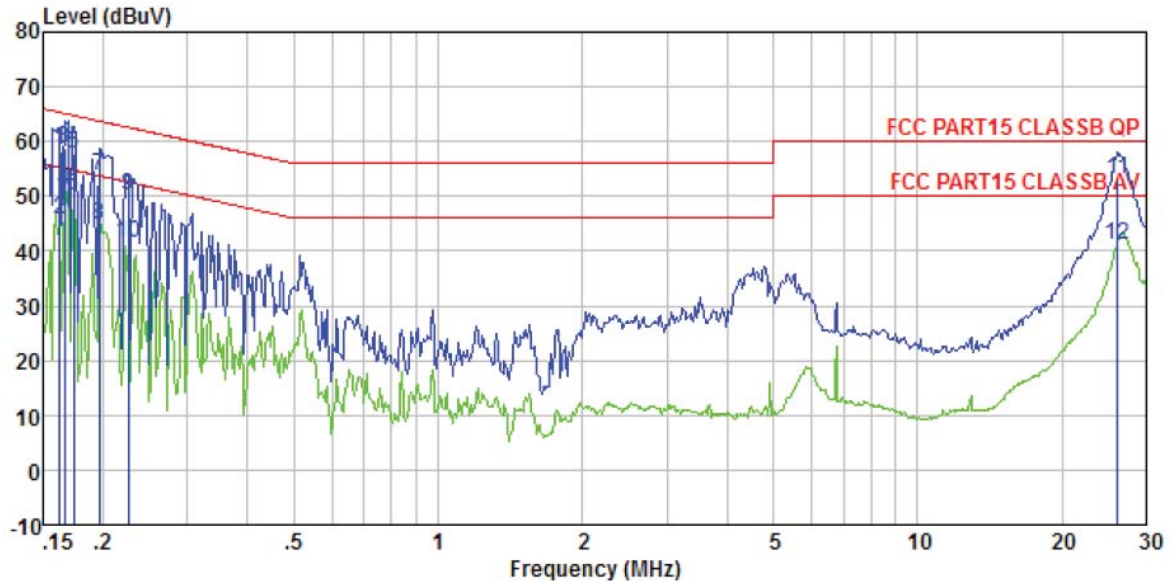
Standard requirement:	FCC Part15 C Section 15.203
<p>15.203 requirement:</p> <p>An intentional radiator shall be designed to ensure that no antenna other than that furnished by the responsible party shall be used with the device. The use of a permanently attached antenna or of an antenna that uses a unique coupling to the intentional radiator, the manufacturer may design the unit so that a broken antenna can be replaced by the user, but the use of a standard antenna jack or electrical connector is prohibited.</p>	
<p>E.U.T Antenna:</p>	
<p><i>The antenna is PCB Antenna, the best case gain of the antenna is 2dBi</i></p> 	

7.2 Conducted Emissions

Test Requirement:	FCC Part15 C Section 15.207														
Test Method:	ANSI C63.10:2013														
Test Frequency Range:	150KHz to 30MHz														
Class / Severity:	Class B														
Receiver setup:	RBW=9KHz, VBW=30KHz, Sweep time=auto														
Limit:	<table border="1"> <thead> <tr> <th rowspan="2">Frequency range (MHz)</th> <th colspan="2">Limit (dBuV)</th> </tr> <tr> <th>Quasi-peak</th> <th>Average</th> </tr> </thead> <tbody> <tr> <td>0.15-0.5</td> <td>66 to 56*</td> <td>56 to 46*</td> </tr> <tr> <td>0.5-5</td> <td>56</td> <td>46</td> </tr> <tr> <td>5-30</td> <td>60</td> <td>50</td> </tr> </tbody> </table> <p>* Decreases with the logarithm of the frequency.</p>	Frequency range (MHz)	Limit (dBuV)		Quasi-peak	Average	0.15-0.5	66 to 56*	56 to 46*	0.5-5	56	46	5-30	60	50
Frequency range (MHz)	Limit (dBuV)														
	Quasi-peak	Average													
0.15-0.5	66 to 56*	56 to 46*													
0.5-5	56	46													
5-30	60	50													
Test setup:	<p><i>Remark</i> E.U.T: Equipment Under Test LISN: Line Impedance Stabilization Network Test table height=0.8m</p>														
Test procedure:	<ol style="list-style-type: none"> 1. The E.U.T and simulators are connected to the main power through a line impedance stabilization network (L.I.S.N.). This provides a 50ohm/50uH coupling impedance for the measuring equipment. 2. The peripheral devices are also connected to the main power through a LISN that provides a 50ohm/50uH coupling impedance with 50ohm termination. (Please refer to the block diagram of the test setup and photographs). 3. Both sides of A.C. line are checked for maximum conducted interference. In order to find the maximum emission, the relative positions of equipment and all of the interface cables must be changed according to ANSI C63.4:2014 on conducted measurement. 														
Test Instruments:	Refer to section 6.0 for details														
Test mode:	Refer to section 5.3 for details														
Test results:	Pass														

Measurement data:

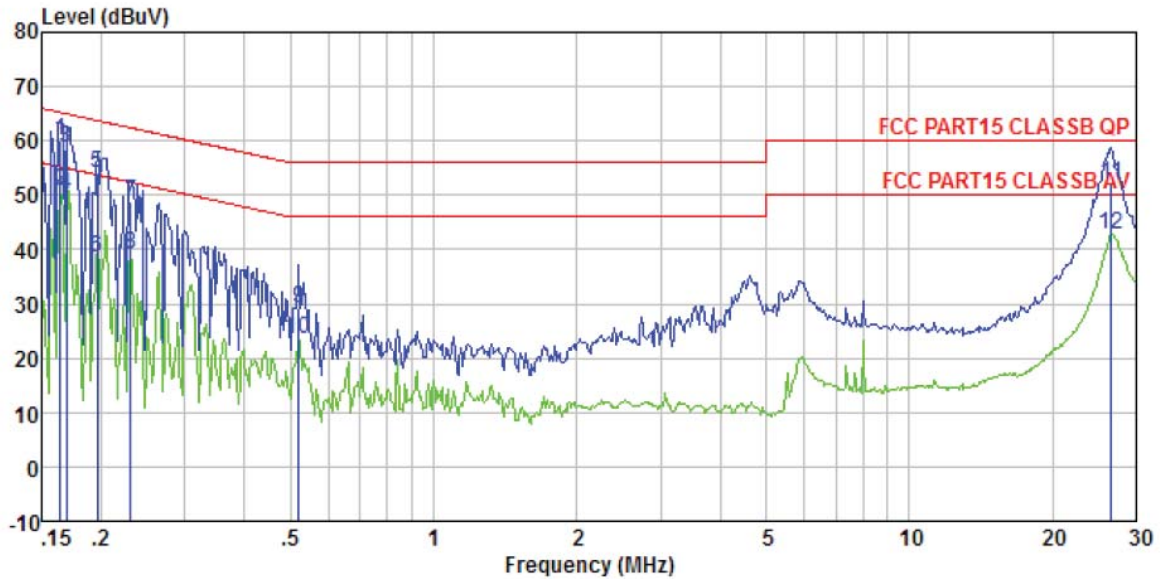
Line:



Site : Shielded room
 Condition : FCC PART15 CLASSB QP LISN-2013 LINE
 Job No. : 0278
 Test mode : Bluetooth mode
 Test Engineer: Arslan

	Freq	Read Level	Level	Limit Line	LISN Factor	Cable Loss	Over Limit	Remark
	MHz	dBuV	dBuV	dBuV	dB	dB	dB	
1	0.162	58.22	58.49	65.34	0.15	0.12	-6.85	QP
2	0.162	45.49	45.76	55.34	0.15	0.12	-9.58	Average
3	0.166	58.62	58.89	65.16	0.15	0.12	-6.27	QP
4	0.166	50.89	51.16	55.16	0.15	0.12	-4.00	Average
5	0.174	57.53	57.81	64.77	0.15	0.13	-6.96	QP
6	0.174	49.80	50.08	54.77	0.15	0.13	-4.69	Average
7	0.197	53.34	53.61	63.76	0.14	0.13	-10.15	QP
8	0.197	44.61	44.88	53.76	0.14	0.13	-8.88	Average
9	0.226	49.90	50.14	62.61	0.12	0.12	-12.47	QP
10	0.226	41.15	41.39	52.61	0.12	0.12	-11.22	Average
11	26.139	51.64	52.94	60.00	1.07	0.23	-7.06	QP
12	26.139	39.95	41.25	50.00	1.07	0.23	-8.75	Average

Neutral:



Site : Shielded room
 Condition : FCC PART15 CLASSB QP LISN-2013 NEUTRAL
 Job No. : 0278
 Test mode : Bluetooth mode
 Test Engineer: Arslan

	Read Freq	Read Level	Level	Limit	LISN	Cable	Over	Remark
	MHz	dBuV	dBuV	dBuV	dB	dB	dB	
1	0.164	60.00	60.19	65.25	0.07	0.12	-5.06	QP
2	0.164	50.50	50.69	55.25	0.07	0.12	-4.56	Average
3	0.169	58.59	58.78	64.99	0.07	0.12	-6.21	QP
4	0.169	49.88	50.07	54.99	0.07	0.12	-4.92	Average
5	0.197	53.97	54.17	63.76	0.07	0.13	-9.59	QP
6	0.197	38.16	38.36	53.76	0.07	0.13	-15.40	Average
7	0.230	48.69	48.87	62.44	0.06	0.12	-13.57	QP
8	0.230	38.87	39.05	52.44	0.06	0.12	-13.39	Average
9	0.521	29.04	29.21	56.00	0.06	0.11	-26.79	QP
10	0.521	23.22	23.39	46.00	0.06	0.11	-22.61	Average
11	26.558	50.86	52.04	60.00	0.95	0.23	-7.96	QP
12	26.558	41.66	42.84	50.00	0.95	0.23	-7.16	Average

Notes:

1. An initial pre-scan was performed on the line and neutral lines with peak detector.
2. Quasi-Peak and Average measurement were performed at the frequencies with maximized peak emission.
3. Final Level = Receiver Read level + LISN Factor + Cable Loss

7.3 Radiated Emission Method

Test Requirement:	FCC Part15 C Section 15.209				
Test Method:	ANSI C63.4:2014 and ANSI C63.10:2013				
Test Frequency Range:	30MHz to 25GHz				
Test site:	Measurement Distance: 3m				
Receiver setup:	Frequency	Detector	RBW	VBW	Remark
	30MHz-1GHz	Quasi-peak	120KHz	300KHz	Quasi-peak Value
	Above 1GHz	Peak	1MHz	3MHz	Peak Value
		Peak	1MHz	10Hz	Average Value
Limit: (Field strength of the fundamental signal)	Frequency	Limit (dBuV/m @3m)		Remark	
	2400MHz-2483.5MHz	94.00		Average Value	
		114.00		Peak Value	
Limit: (Spurious Emissions)	Frequency	Limit (dBuV/m @3m)		Remark	
	30MHz-88MHz	40.00		Quasi-peak Value	
	88MHz-216MHz	43.50		Quasi-peak Value	
	216MHz-960MHz	46.00		Quasi-peak Value	
	960MHz-1GHz	54.00		Quasi-peak Value	
	Above 1GHz	54.00		Average Value	
		74.00		Peak Value	
Limit: (band edge)	Emissions radiated outside of the specified frequency bands, except for harmonics, shall be attenuated by at least 50 dB below the level of the fundamental or to the general radiated emission limits in Section 15.209, whichever is the lesser attenuation.				
Test setup:	<p>Below 1GHz</p> <p>Above 1GHz</p>				

	<p>The diagram illustrates the test setup. An EUT (Electromagnetic Under Test) is placed on a turn table. The turn table is positioned 3 meters away from an antenna tower. The antenna tower has a horn antenna mounted on top. The antenna height is varied from 1 meter to 4 meters above the ground. The turn table is 1.5 meters high for frequencies above 1 GHz and 0.8 meters high for frequencies below 1 GHz. A spectrum analyzer is connected to the antenna tower via an amplifier.</p>
<p>Test Procedure:</p>	<ol style="list-style-type: none"> 1. The EUT was placed on the top of a rotating table (0.8m for below 1GHz and 1.5 meters for above 1GHz) above the ground at a 3 meter camber. The table was rotated 360 degrees to determine the position of the highest radiation. 2. The EUT was set 3 meters away from the interference-receiving antenna, which was mounted on the top of a variable-height antenna tower. 3. The antenna height is varied from one meter to four meters above the ground to determine the maximum value of the field strength. Both horizontal and vertical polarizations of the antenna are set to make the measurement. 4. For each suspected emission, the EUT was arranged to its worst case and then the antenna was tuned to heights from 1 meter to 4 meters and the rota table was turned from 0 degrees to 360 degrees to find the maximum reading. 5. The test-receiver system was set to Peak Detect Function and Specified Bandwidth with Maximum Hold Mode. 6. If the emission level of the EUT in peak mode was 10dB lower than the limit specified, then testing could be stopped and the peak values of the EUT would be reported. Otherwise the emissions that did not have 10dB margin would be re-tested one by one using peak, quasi-peak or average method as specified and then reported in a data sheet.
<p>Test Instruments:</p>	<p>Refer to section 6.0 for details</p>
<p>Test mode:</p>	<p>Refer to section 5.3 for details</p>
<p>Test results:</p>	<p>Pass</p>

Measurement data:

7.3.1 Field Strength of The Fundamental Signal

Peak value:

Frequency (MHz)	Read Level (dBuV)	Antenna Factor (dB/m)	Cable Loss (dB)	Preamplifier Factor (dB)	Level (dBuV/m)	Limit Line (dBuV/m)	Over Limit (dB)	polarization
2402.00	96.30	27.58	5.39	34.01	95.26	114.00	-18.74	Vertical
2402.00	93.43	27.58	5.39	34.01	92.39	114.00	-21.61	Horizontal
2441.00	94.62	27.48	5.43	33.96	93.57	114.00	-20.43	Vertical
2441.00	91.69	27.48	5.43	33.96	90.64	114.00	-23.36	Horizontal
2480.00	96.26	27.52	5.47	33.92	95.33	114.00	-18.67	Vertical
2480.00	94.05	27.52	5.47	33.92	93.12	114.00	-20.88	Horizontal

Average value:

Frequency (MHz)	Read Level (dBuV)	Antenna Factor (dB/m)	Cable Loss (dB)	Preamplifier Factor (dB)	Level (dBuV/m)	Limit Line (dBuV/m)	Over Limit (dB)	polarization
2402	84.76	27.58	5.39	34.01	83.72	94.00	-10.28	Vertical
2402	82.16	27.58	5.39	34.01	81.12	94.00	-12.88	Horizontal
2441	83.42	27.48	5.43	33.96	82.37	94.00	-11.63	Vertical
2441	80.26	27.48	5.43	33.96	79.21	94.00	-14.79	Horizontal
2480	86.65	27.52	5.47	33.92	85.72	94.00	-8.28	Vertical
2480	82.81	27.52	5.47	33.92	81.88	94.00	-12.12	Horizontal

7.3.2 Spurious emissions

■ Below 1GHz

Frequency (MHz)	Read Level (dBuV)	Antenna Factor (dB/m)	Cable Loss (dB)	Preamp Factor (dB)	Level (dBuV/m)	Limit Line (dBuV/m)	Over Limit (dB)	polarization
68.15	53.28	11.34	0.93	31.89	33.66	40.00	-6.34	Vertical
117.77	49.89	12.90	1.34	31.85	32.28	43.50	-11.22	Vertical
229.29	52.51	13.62	2.01	32.15	35.99	46.00	-10.01	Vertical
286.98	51.12	14.81	2.30	32.18	36.05	46.00	-9.95	Vertical
432.55	50.67	17.53	3.01	31.78	39.43	46.00	-6.57	Vertical
758.04	45.12	21.53	4.31	31.27	39.69	46.00	-6.31	Vertical
114.11	51.71	13.52	1.31	31.83	34.71	43.50	-8.79	Horizontal
135.03	55.79	10.56	1.47	31.92	35.90	43.50	-7.60	Horizontal
285.98	49.24	14.78	2.29	32.18	34.13	46.00	-11.87	Horizontal
324.46	52.78	15.53	2.49	32.10	38.70	46.00	-7.30	Horizontal
417.64	47.36	17.43	2.93	31.83	35.89	46.00	-10.11	Horizontal
541.37	45.41	19.41	3.49	31.33	36.98	46.00	-9.02	Horizontal

■ Above 1GHz

Test channel:	Lowest channel
---------------	----------------

Peak value:

Frequency (MHz)	Read Level (dBuV)	Antenna Factor (dB/m)	Cable Loss (dB)	Preamp Factor (dB)	Level (dBuV/m)	Limit Line (dBuV/m)	Over Limit (dB)	polarization
4804.00	35.99	31.78	8.60	32.09	44.28	74.00	-29.72	Vertical
7206.00	30.96	36.15	11.65	32.00	46.76	74.00	-27.24	Vertical
9608.00	30.69	37.95	14.14	31.62	51.16	74.00	-22.84	Vertical
12010.00	*					74.00		Vertical
14412.00	*					74.00		Vertical
4804.00	40.01	31.78	8.60	32.09	48.30	74.00	-25.70	Horizontal
7206.00	32.60	36.15	11.65	32.00	48.40	74.00	-25.60	Horizontal
9608.00	29.99	37.95	14.14	31.62	50.46	74.00	-23.54	Horizontal
12010.00	*					74.00		Horizontal
14412.00	*					74.00		Horizontal

Average value:

Frequency (MHz)	Read Level (dBuV)	Antenna Factor (dB/m)	Cable Loss (dB)	Preamp Factor (dB)	Level (dBuV/m)	Limit Line (dBuV/m)	Over Limit (dB)	polarization
4804.00	25.05	31.78	8.60	32.09	33.34	54.00	-20.66	Vertical
7206.00	19.79	36.15	11.65	32.00	35.59	54.00	-18.41	Vertical
9608.00	18.95	37.95	14.14	31.62	39.42	54.00	-14.58	Vertical
12010.00	*					54.00		Vertical
14412.00	*					54.00		Vertical
4804.00	29.14	31.78	8.60	32.09	37.43	54.00	-16.57	Horizontal
7206.00	21.88	36.15	11.65	32.00	37.68	54.00	-16.32	Horizontal
9608.00	18.57	37.95	14.14	31.62	39.04	54.00	-14.96	Horizontal
12010.00	*					54.00		Horizontal
14412.00	*					54.00		Horizontal

Remark:

1. Final Level = Receiver Read level + Antenna Factor + Cable Loss – Preamplifier Factor
2. The emission levels of other frequencies are very lower than the limit and not show in test report.
3. “*”, means this data is the too weak instrument of signal is unable to test.

Test channel:	Middle channel
---------------	----------------

Peak value:

Frequency (MHz)	Read Level (dBuV)	Antenna Factor (dB/m)	Cable Loss (dB)	Preamp Factor (dB)	Level (dBuV/m)	Limit Line (dBuV/m)	Over Limit (dB)	polarization
4882.00	35.00	31.85	8.67	32.12	43.40	74.00	-30.60	Vertical
7323.00	30.30	36.37	11.72	31.89	46.50	74.00	-27.50	Vertical
9764.00	30.11	38.35	14.25	31.62	51.09	74.00	-22.91	Vertical
12205.00	*					74.00		Vertical
14646.00	*					74.00		Vertical
4882.00	38.82	31.85	8.67	32.12	47.22	74.00	-26.78	Horizontal
7323.00	31.85	36.37	11.72	31.89	48.05	74.00	-25.95	Horizontal
9764.00	29.31	38.35	14.25	31.62	50.29	74.00	-23.71	Horizontal
12205.00	*					74.00		Horizontal
14646.00	*					74.00		Horizontal

Average value:

Frequency (MHz)	Read Level (dBuV)	Antenna Factor (dB/m)	Cable Loss (dB)	Preamp Factor (dB)	Level (dBuV/m)	Limit Line (dBuV/m)	Over Limit (dB)	polarization
4882.00	24.25	31.85	8.67	32.12	32.65	54.00	-21.35	Vertical
7323.00	19.25	36.37	11.72	31.89	35.45	54.00	-18.55	Vertical
9764.00	18.47	38.35	14.25	31.62	39.45	54.00	-14.55	Vertical
12205.00	*					54.00		Vertical
14646.00	*					54.00		Vertical
4882.00	28.23	31.85	8.67	32.12	36.63	54.00	-17.37	Horizontal
7323.00	21.27	36.37	11.72	31.89	37.47	54.00	-16.53	Horizontal
9764.00	18.01	38.35	14.25	31.62	38.99	54.00	-15.01	Horizontal
12205.00	*					54.00		Horizontal
14646.00	*					54.00		Horizontal

Remark:

1. Final Level = Receiver Read level + Antenna Factor + Cable Loss – Pre-amplifier Factor
2. The emission levels of other frequencies are very lower than the limit and not show in test report.
3. “*”, means this data is the too weak instrument of signal is unable to test.

Test channel:	Highest channel
---------------	-----------------

Peak value:

Frequency (MHz)	Read Level (dBuV)	Antenna Factor (dB/m)	Cable Loss (dB)	Preamplifier Factor (dB)	Level (dBuV/m)	Limit Line (dBuV/m)	Over Limit (dB)	polarization
4960.00	36.59	31.93	8.73	32.16	45.09	74.00	-28.91	Vertical
7440.00	31.36	36.59	11.79	31.78	47.96	74.00	-26.04	Vertical
9920.00	31.05	38.81	14.38	31.88	52.36	74.00	-21.64	Vertical
12400.00	*					74.00		Vertical
14880.00	*					74.00		Vertical
4960.00	40.73	31.93	8.73	32.16	49.23	74.00	-24.77	Horizontal
7440.00	33.05	36.59	11.79	31.78	49.65	74.00	-24.35	Horizontal
9920.00	30.40	38.81	14.38	31.88	51.71	74.00	-22.29	Horizontal
12400.00	*					74.00		Horizontal
14880.00	*					74.00		Horizontal

Average value:

Frequency (MHz)	Read Level (dBuV)	Antenna Factor (dB/m)	Cable Loss (dB)	Preamplifier Factor (dB)	Level (dBuV/m)	Limit Line (dBuV/m)	Over Limit (dB)	polarization
4960.00	25.61	31.93	8.73	32.16	34.11	54.00	-19.89	Vertical
7440.00	20.17	36.59	11.79	31.78	36.77	54.00	-17.23	Vertical
9920.00	19.28	38.81	14.38	31.88	40.59	54.00	-13.41	Vertical
12400.00	*					54.00		Vertical
14880.00	*					54.00		Vertical
4960.00	29.76	31.93	8.73	32.16	38.26	54.00	-15.74	Horizontal
7440.00	22.30	36.59	11.79	31.78	38.90	54.00	-15.10	Horizontal
9920.00	18.96	38.81	14.38	31.88	40.27	54.00	-13.73	Horizontal
12400.00	*					54.00		Horizontal
14880.00	*					54.00		Horizontal

Remark:

1. Final Level = Receiver Read level + Antenna Factor + Cable Loss – Preamplifier Factor
2. The emission levels of other frequencies are very lower than the limit and not show in test report.
3. “*”, means this data is the too weak instrument of signal is unable to test.

7.3.3 Bandedge emissions

All of the restriction bands were tested, and only the data of worst case was exhibited.

Test channel:	Lowest channel
---------------	----------------

Peak value:

Frequency (MHz)	Read Level (dBuV)	Antenna Factor (dB/m)	Cable Loss (dB)	Preamp Factor (dB)	Level (dBuV/m)	Limit Line (dBuV/m)	Over Limit (dB)	Polarization
2390.00	40.61	27.59	5.38	30.18	43.40	74.00	-30.60	Horizontal
2400.00	57.08	27.58	5.39	30.18	59.87	74.00	-14.13	Horizontal
2390.00	40.95	27.59	5.38	30.18	43.74	74.00	-30.26	Vertical
2400.00	58.87	27.58	5.39	30.18	61.66	74.00	-12.34	Vertical

Average value:

Frequency (MHz)	Read Level (dBuV)	Antenna Factor (dB/m)	Cable Loss (dB)	Preamp Factor (dB)	Level (dBuV/m)	Limit Line (dBuV/m)	Over Limit (dB)	Polarization
2390.00	31.68	27.59	5.38	30.18	34.47	54.00	-19.53	Horizontal
2400.00	42.78	27.58	5.39	30.18	45.57	54.00	-8.43	Horizontal
2390.00	31.46	27.59	5.38	30.18	34.25	54.00	-19.75	Vertical
2400.00	44.21	27.58	5.39	30.18	47.00	54.00	-7.00	Vertical

Test channel:	Highest channel
---------------	-----------------

Peak value:

Frequency (MHz)	Read Level (dBuV)	Antenna Factor (dB/m)	Cable Loss (dB)	Preamp Factor (dB)	Level (dBuV/m)	Limit Line (dBuV/m)	Over Limit (dB)	Polarization
2483.50	42.45	27.53	5.47	29.93	45.52	74.00	-28.48	Horizontal
2500.00	42.05	27.55	5.49	29.93	45.16	74.00	-28.84	Horizontal
2483.50	42.91	27.53	5.47	29.93	45.98	74.00	-28.02	Vertical
2500.00	42.83	27.55	5.49	29.93	45.94	74.00	-28.06	Vertical

Average value:

Frequency (MHz)	Read Level (dBuV)	Antenna Factor (dB/m)	Cable Loss (dB)	Preamp Factor (dB)	Level (dBuV/m)	Limit Line (dBuV/m)	Over Limit (dB)	Polarization
2483.50	34.48	27.53	5.47	29.93	37.55	54.00	-16.45	Horizontal
2500.00	32.80	27.55	5.49	29.93	35.91	54.00	-18.09	Horizontal
2483.50	35.50	27.53	5.47	29.93	38.57	54.00	-15.43	Vertical
2500.00	32.53	27.55	5.49	29.93	35.64	54.00	-18.36	Vertical

Remark:

Final Level = Receiver Read level + Antenna Factor + Cable Loss – Preamplifier Factor

8 Test Setup Photo

Radiated Emission



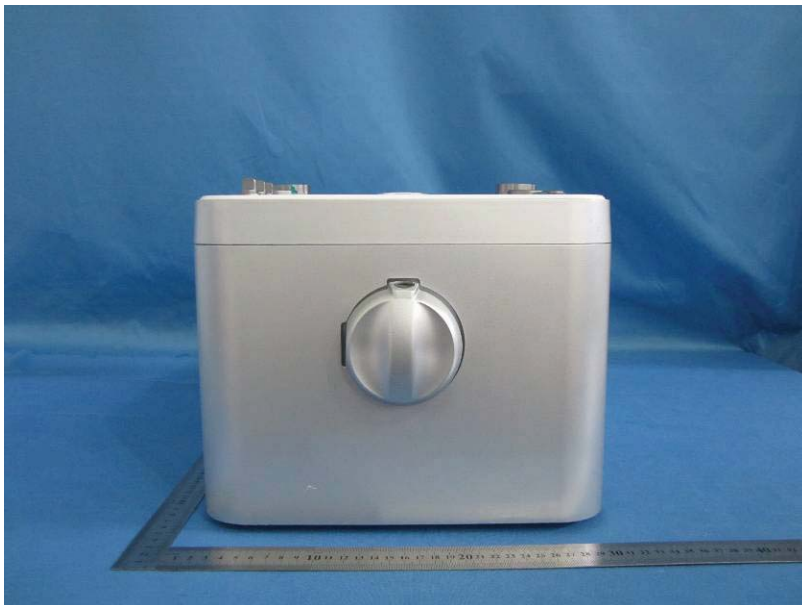
Conducted Emission



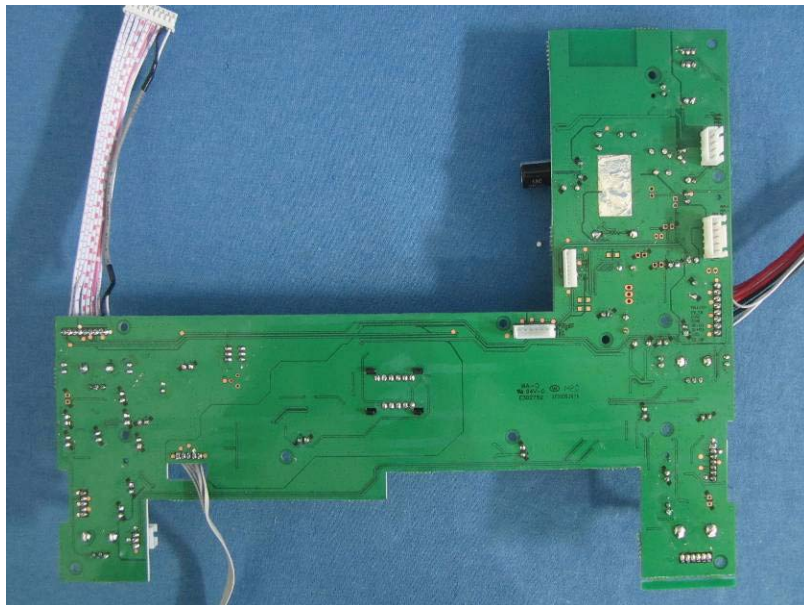
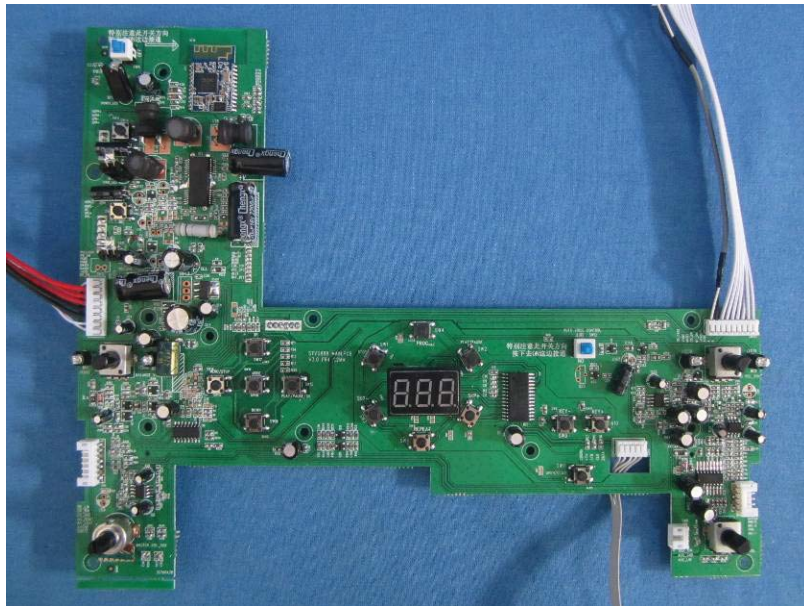
9 EUT Constructional Details

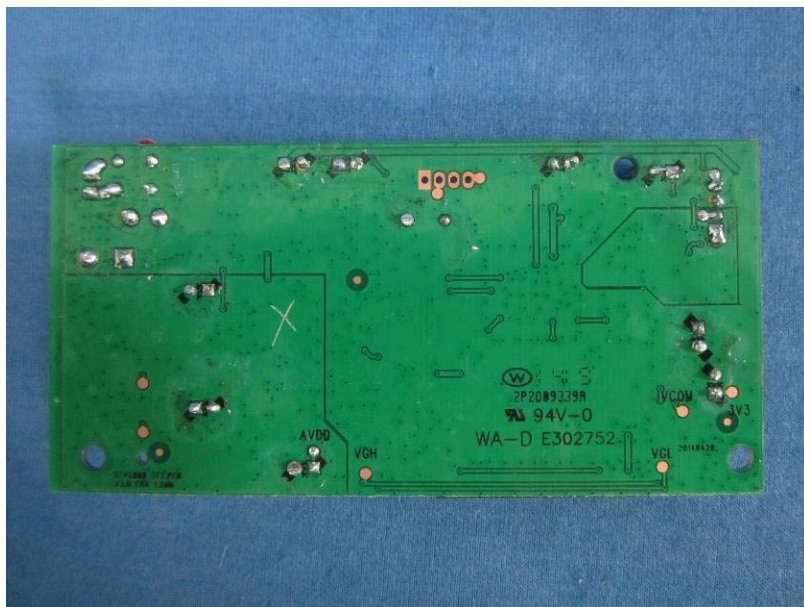


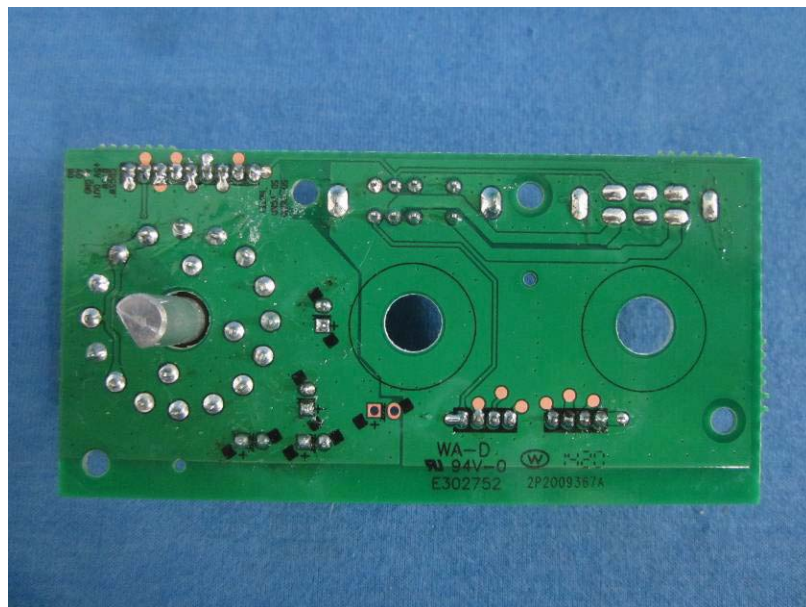
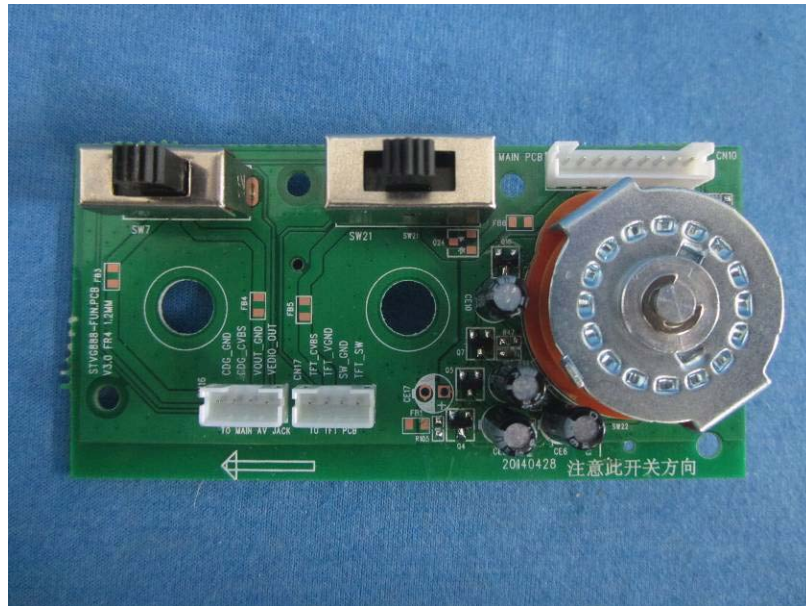


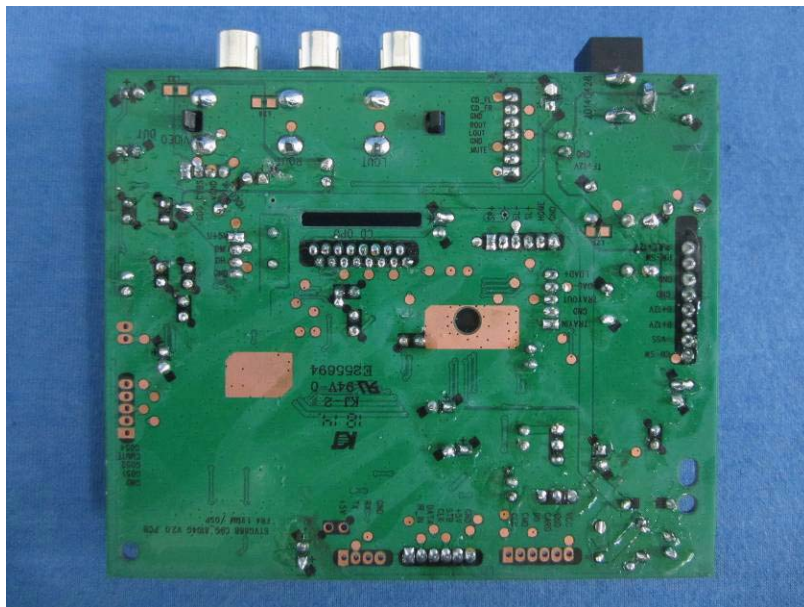
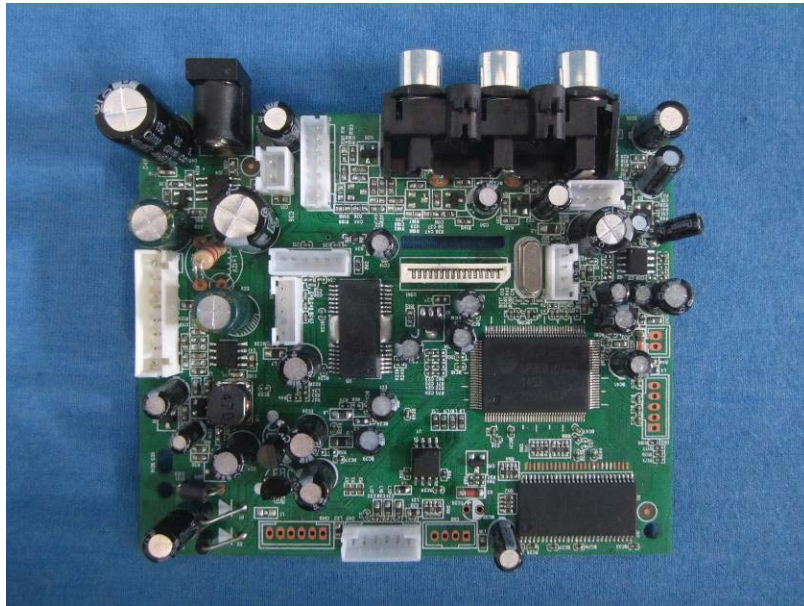


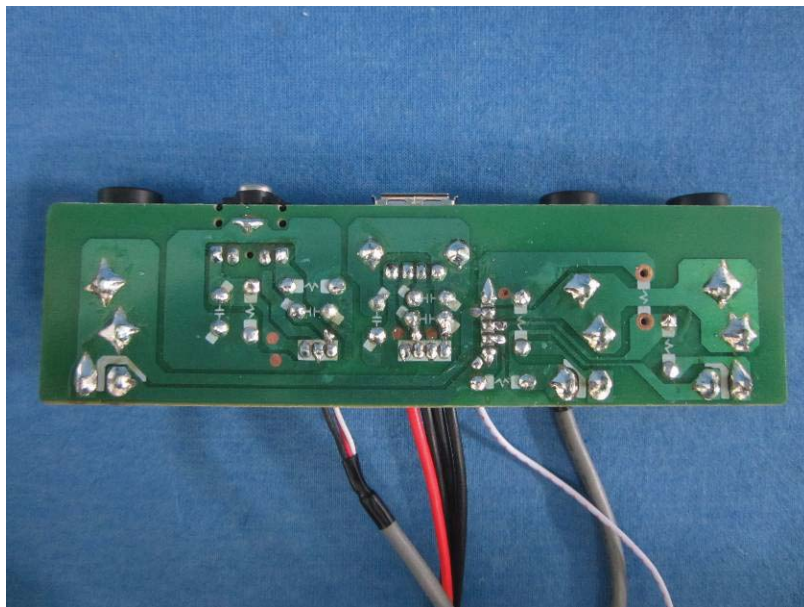
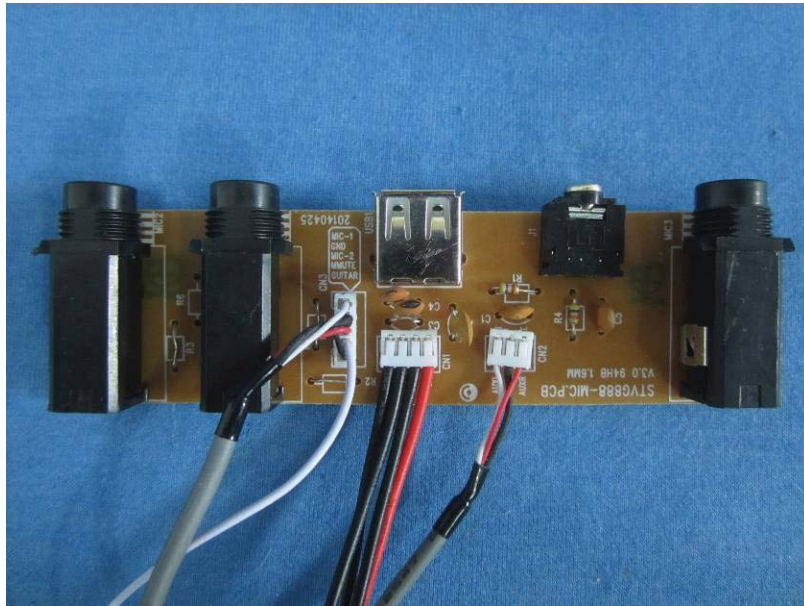


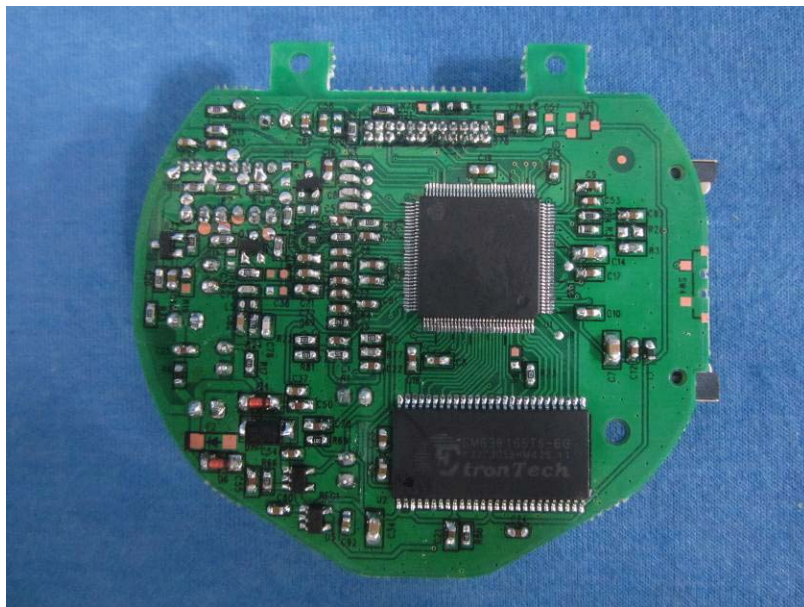
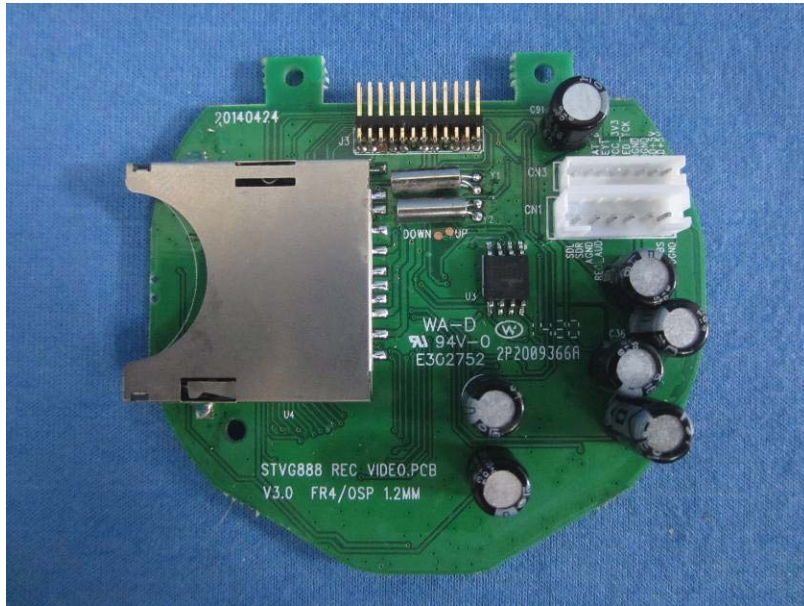


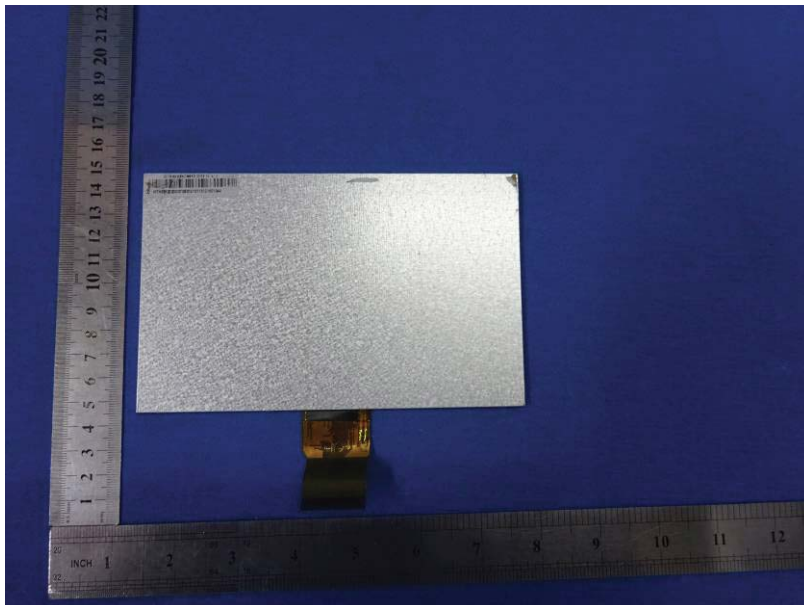


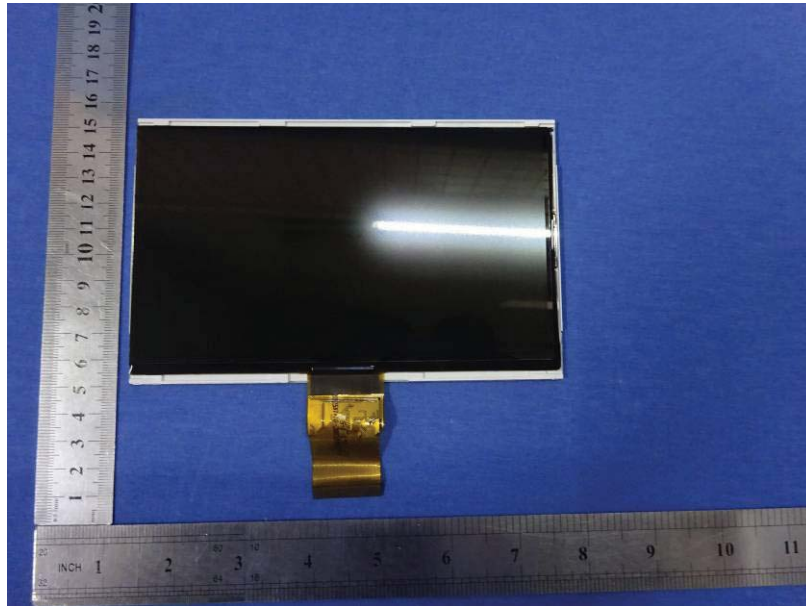












-----End-----