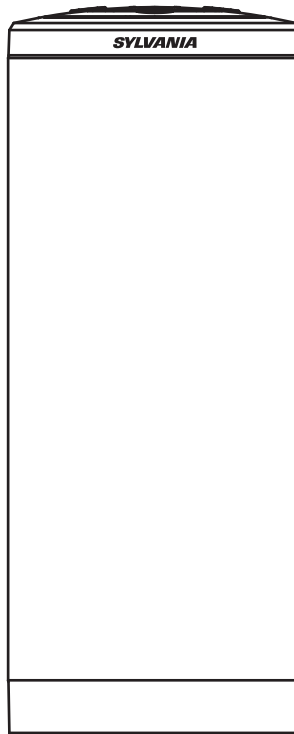


SYLVANIA

VOICE ACTIVATED BLUETOOTH SMART SPEAKER WITH
GOOGLE AND SIRI ASSISTANT



MODEL:SP5776-DG

Please read this user manual carefully to ensure proper use of this product
and keep this manual for future reference

SYLVANIA is a registered trademark of OSRAM SYLVANIA INC. Used under license.

IMPORTANT SAFETY INSTRUCTIONS



CAUTION: TO REDUCE THE ELECTRIC SHOCK, DO NOT REMOVE THE COVER (OR BACK). NO USER SERVICEABLE PART INSIDE, REFER SERVICING TO QUALIFIED SERVICE PERSONNEL.



DANGEROUS VOLTAGE:The lighting flash with arrowhead symbol within an equilateral triangle is intended to alert the user to the presence of uninsulated “dangerous voltage” within the product’s enclosure that may be of sufficient magnitude to constitute a risk of electric shock to persons.



ATTENTION:The exclamation point within an equilateral triangle is intended to alert the user to the presence of important operating and maintenance (servicing) instructions in the literature accompanying the appliance.

WARNING: TO PREVENT FIRE OR SHOCK HAZARD, DO NOT EXPOSE THIS UNIT TO RAIN OR MOISTURE.

FCC STATEMENT:

This device complies with part 15 of the FCC Rules. Operation is subject to the following two conditions:

- (1) This device may not cause harmful interference, and
- (2) This device must accept any interference received, including interference that may cause undesired operation.

FCC NOTICE:

This equipment has been tested and found to comply with the limits for a Class B digital device, pursuant to Part 15 of the FCC Rules. These limits are designed to provide reasonable protection against harmful interference in a residential installation. This equipment generates, uses and can radiate radio frequency energy and, if not installed and used in accordance with the instructions, may cause harmful interference to radio communications. However, there is no guarantee that interference will not occur in a particular installation. If this equipment does cause harmful interference to radio or television reception, which can be determined by turning the equipment off and on, the user is encouraged to try to correct the interference by one or more of the following measures:

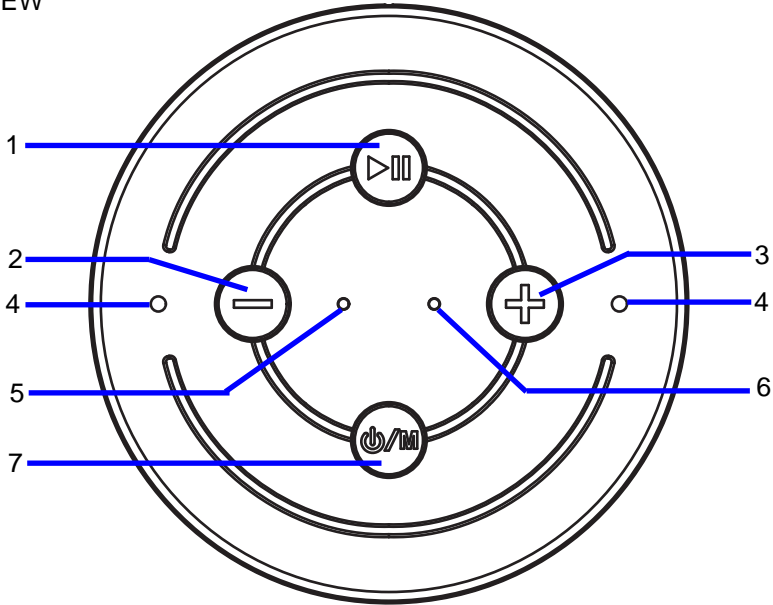
- Reorient or relocate the receiving antenna.
- Increase the separation between the equipment and receiver.
- Connect the equipment into an outlet on a circuit different from that to which the receiver is connected.
- Consult the dealer or an experienced radio/TV technician for help.

FCC WARNING:

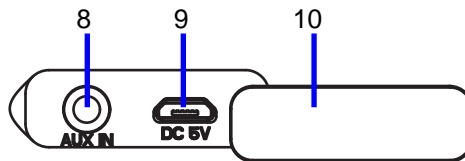
To assure continued operation, follow the attached installation instructions and use only shield cables when connecting to other devices. Changes or modifications not expressly approved by the party responsible for compliance could void the user's authority to operate the equipment.

FUNCTION PANEL

TOP VIEW



REAR VIEW

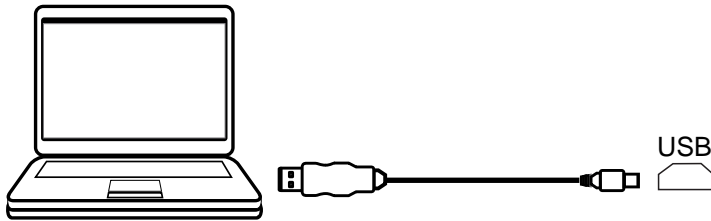


- | | |
|------------------------|-------------------------------------|
| 1. Play/Pause Button | 6. Pairing Indicator |
| 2. Volume Down Button | 7. Power on/off, Mode Switch Button |
| 3. Volume Up Button | 8. AUX IN Jack |
| 4. Built-in Microphone | 9. Micro-USB Charging Port |
| 5. Charging Indicator | 10. Rubber Cover |

RECHARGING THE UNIT

The unit has a built-in rechargeable battery, charge it before operation or when it is drained as below:

1. Uncover the rubber cover at the rear of the unit.
2. Connect the Micro USB Plug from the supplied USB Charging Cable to the DC IN Jack (Micro USB Port).
3. Plug the Macro USB Plug to the USB Port on Laptop (or USB Adapter) as below.



4. While charging, the Charging Indicator on the unit will turn Red, it will turn off when completely charged.

NOTES:

- A. Before first time use, charge approximately 4 hours until the unit is completely charged.
- B. Recharge and store the unit within the temperature range of 5°C~35°C (40°F~95°F).
- C. Do not charge longer than 24 hours. Excessive charging or running the unit until the battery fully drains will damage battery. Battery life will be extended if you keep the battery fully charged.
- D. Battery life naturally shortens slowly over time.
- E. The rechargeable battery incorporated in this product is not user replaceable.

BLUETOOTH OPERATION

1. Press and hold the ϕ /M button to power on the unit, the mode indicator will turn on and blinks with Red and Green color alternatively.
2. Activate the Bluetooth menu on the device you wish to connect to the unit, try to search the unit, the pairing name "SYLVANIA SP5776" will appear on Bluetooth pairing list, select it and make connection.
3. After successful connection, the mode indicator will be solid Blue.
4. Play a track on your paired device as normal.

During playing:

- Press the ►|| Button to pause, press it again to resume playing.
- Press the - or + button to adjust volume level.

NOTES:

If the AUX IN cable inserted into the AUX IN jack, it will switch to AUX IN mode.

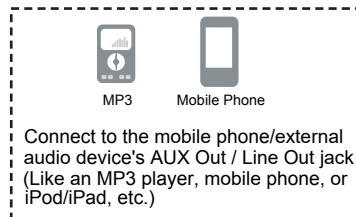
VOICE ASSISTANT

1. Connect the unit with your phone with Siri or Google Assistant through Bluetooth.
2. Speake your requests to the Microphone on the unit.
3. You can visit any function on your phone, navigate the desired location, asking weather or traffic, checking the airline schedule, playing the music, browsing the photos, checking the emails etc.
4. When the phone searching the answer from network, you may need to activate your Wifi or phone data streaming.

AUX IN

1. Uncover the rubber cover at the rear of the unit.
2. Insert one end of the AUX IN cable to the AUX OUT jack on the external player.
3. Insert the other end of the AUX IN cable to the AUX IN jack of the unit.

AUX IN



4. Press and hold the ϕ /M button to power on the unit.
5. Press the ϕ /M button to switch to AUX IN mode, the mode indicator will be solid Green.
6. Play music on external player.

During playing:

Press the - or + button to adjust volume level.

TROUBLESHOOTING GUIDE

Check the following before requesting service:

SYMPTOM	POSSIBLE CAUSE	POSSIBLE SOLUTION
Can't power on	Built in battery drained	Recharge the battery
No sound or sound weak	Volume level of paired/connected device is in low level	Rise the volume level of the paired/connected device
Sound distortion	Volume level of the connected/paired device too high	Reduce the volume level of the connected/paired device
BT not functioning	The external BT device had NOT paired to the unit	Pair the external BT device to the unit
	The external BT device too far from the unit	Place the external BT device close to the unit

SPECIFICATIONS

Power source: Built-in DC 3.7V, 1800mAh rechargeable battery
Recharge by DC 5V through Micro USB port

Bluetooth Version: V4.2

Bluetooth working range: up to 32 feet in open area

Audio Output Power: 5 W (RMS)

ACCESSORIES:

1 x User Manual

1 x USB Charging Cable

**SPECIFICATIONS AND ACCESSORIES ARE SUBJECT TO CHANGE
WITHOUT NOTICE**

For service assistance and product information, please call: 1-800-968-9853.

Curtis International Ltd.

7045 BECKETT DRIVE, UNIT 15, MISSISSAUGA, ON, L5S 2A3 www.curtisint.com