

EXHIBIT 3 - EUT INTERNAL PHOTOGRAPHS

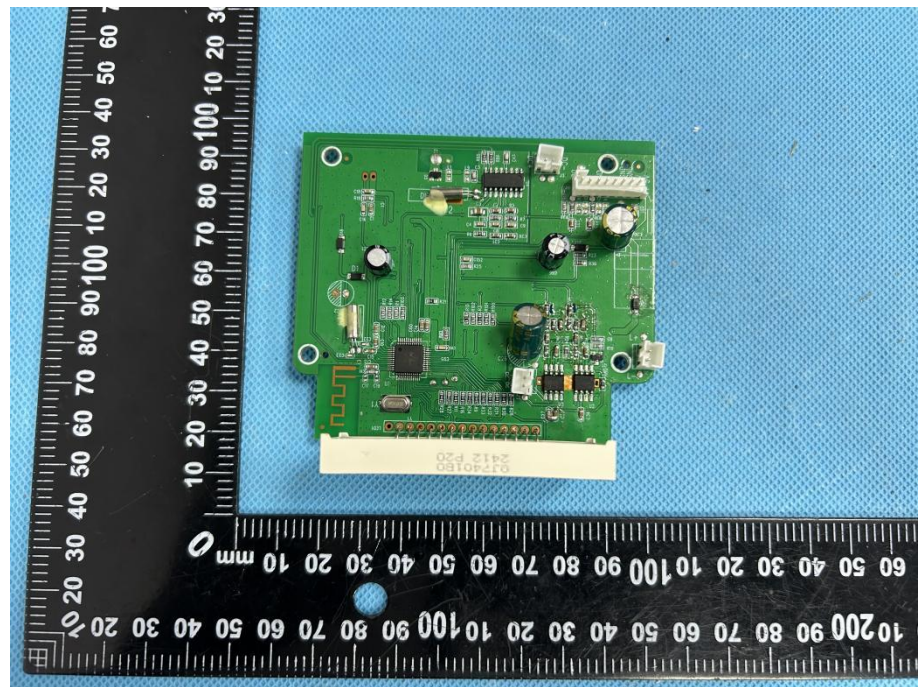
EUT Housing and Board View 1



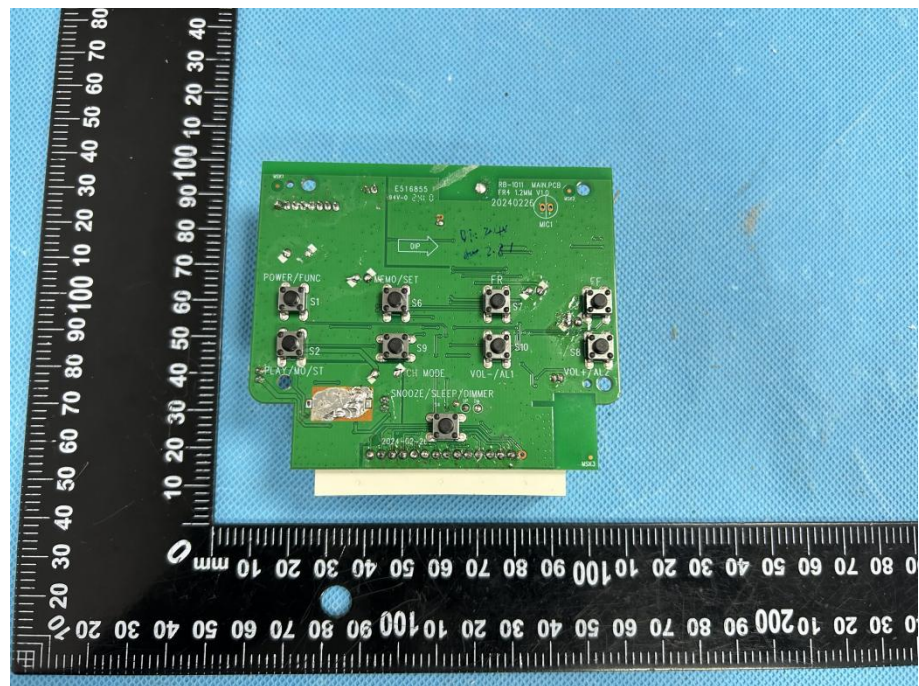
EUT Housing and Board View 2

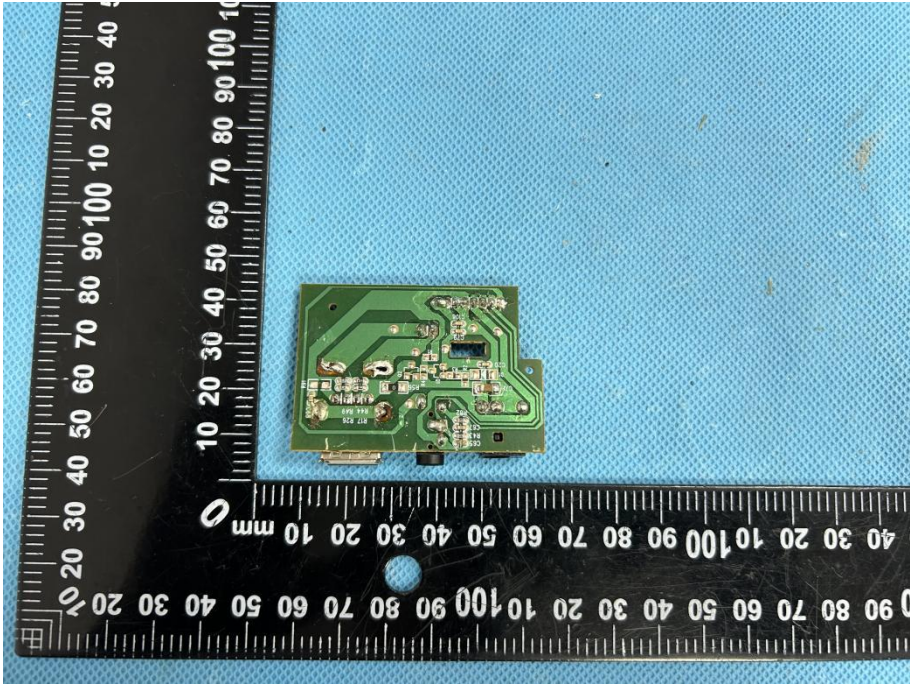
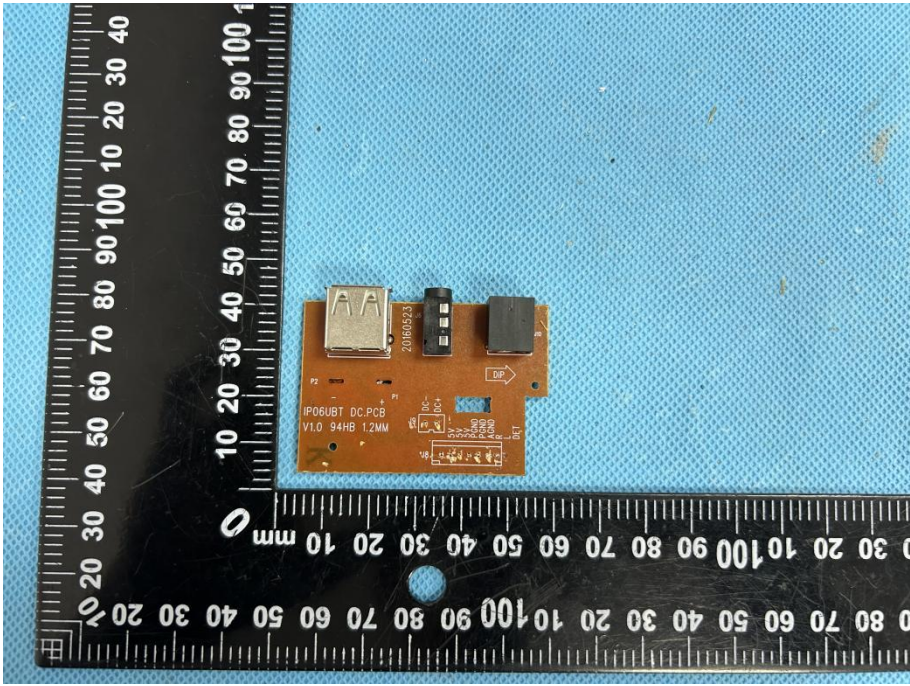


**Solder
Board-Component
View 1**

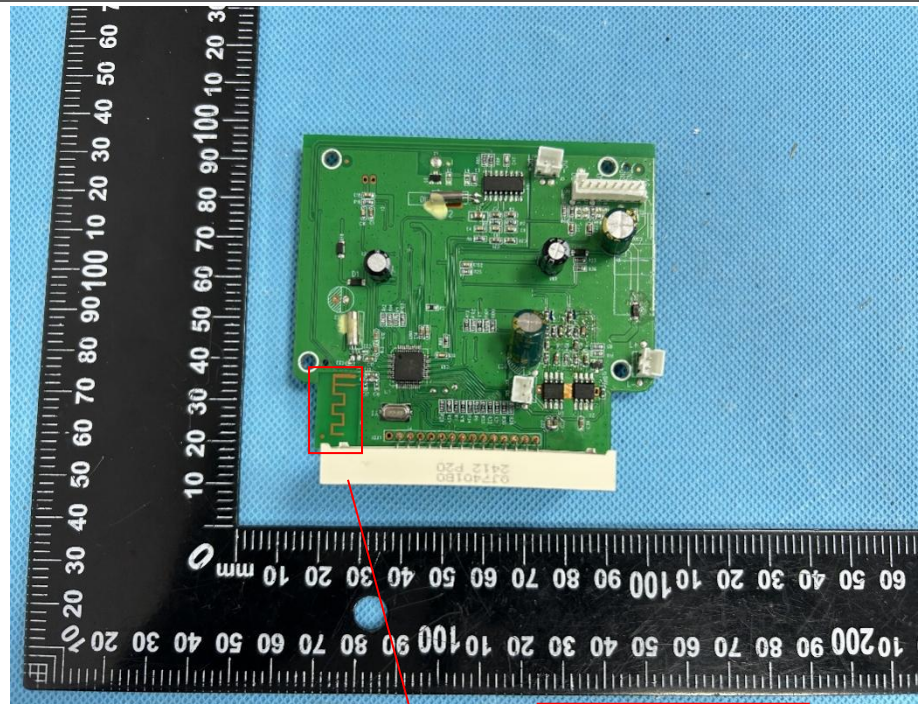


**Solder
Board-Component
View 2**



<p>Solder Board-Component View 3</p>	 <p>A photograph of a green PCB component, likely a camera module, placed on a blue textured surface. A black ruler with white markings is positioned to the left and bottom of the component for scale. The ruler shows measurements in millimeters, with markings every 10mm and sub-markings every 1mm. The component is roughly rectangular with several small components and solder joints on its surface.</p>
<p>Solder Board-Component View 4</p>	 <p>A photograph of an orange PCB component, likely a DC-DC converter, placed on a blue textured surface. A black ruler with white markings is positioned to the left and bottom of the component for scale. The ruler shows measurements in millimeters, with markings every 10mm and sub-markings every 1mm. The component is rectangular and features a USB-A port on the left side, a DP port on the right, and various electronic components like capacitors and a transformer. Text on the board includes "IP06UBT DC.PCB", "V1.0 94HB 1.2MM", and "20180923".</p>

Antenna View 1



BT Ant.

Antenna View 2



FM Ant