

memorex®

PORTABLE BLUETOOTH PARTY SPEAKER

MODEL | **KP-2951B**

OPERATION MANUAL



ENGLISH

SPECIAL NOTES

For users in U.S.



CAUTION
RISK OF ELECTRIC SHOCK DO NOT OPEN



CAUTION: TO REDUCE THE RISK OF ELECTRIC SHOCK, DO NOT REMOVE COVER (OR BACK).

NO USER-SERVICEABLE PARTS INSIDE. REFER SERVICING TO QUALIFIED SERVICE PERSONNEL.

Explanation of Graphical Symbols:



The lightning flash with arrowhead symbol, within an equilateral triangle, is intended to alert the user to the presence of uninsulated "dangerous voltage" within the product's enclosure that may be of sufficient magnitude to constitute a risk of electric shock to persons.



The exclamation point within an equilateral triangle is intended to alert the user to the presence of important operating and maintenance (servicing) instructions in the literature accompanying the appliance.

WARNING: TO REDUCE THE RISK OF FIRE OR ELECTRIC SHOCK, DO NOT EXPOSE THIS APPLIANCE TO RAIN OR MOISTURE.

FOR YOUR RECORDS

For your assistance in reporting this unit in case of loss or theft, please record below the model number and serial number which are located at the bottom of the unit.

Please retain this information.

Model number _____

Serial number _____

Date of purchase _____

Place of purchase _____

To obtain service or product information,
call **1-877-506-4900**

FCC COMPLIANCE STATEMENT

This device complies with part 15 of the FCC Rules. Operation is subject to the following two conditions: (1) This device may not cause harmful interference, and (2) this device must accept any interference received, including interference that may cause undesired operation.

Note: This equipment has been tested and found to comply with the limits for a Class B digital device, pursuant to part 15 of the FCC Rules. These limits are designed to provide reasonable protection against harmful interference in a residential installation. This equipment generates, uses and can radiate radio frequency energy and, if not installed and used in accordance with the instructions, may cause harmful interference to radio communications. However, there is no guarantee that interference will not occur in a particular installation. If this equipment does cause harmful interference to radio or television reception, which can be determined by turning the equipment off and on, the user is encouraged to try to correct the interference by one or more of the following measures:

- Reorient or relocate the receiving antenna.
- Increase the separation between the equipment and receiver.
- Connect the equipment into an outlet on a circuit different from that to which the receiver is connected.
- Consult the dealer or an experienced radio/TV technician for help.

Note: The Grantee is not responsible for any changes or modifications not expressly approved by the party responsible for compliance. such modifications could void the user's authority to operate the equipment.

The device has been evaluated to meet general RF exposure requirement. The device can be used in portable exposure condition without restriction.

GENERAL SAFETY (CONT.)

1. **Read Instructions:** All the safety and operating instructions should be read before the appliance is operated.
2. **Retain Instructions:** The safety and operating instructions should be well kept for future reference.
3. **Heed Warnings:** All warnings on the appliance and in the operating instructions should be adhered to.
4. **Follow Instructions:** All operating and use instructions should be followed.
5. **Power Sources:** The appliance should be connected to a power supply only of the type described in the operating instructions or as marked on the appliance.
6. **Power-Cord Protection:** Power supply cords should be routed so that they are not likely to be walked on or pinched by items placed upon or against them, paying particular attention to cords at plugs, convenience receptacles, and the point at which they exit from the appliance.
7. **Overloading:** Do not overload wall outlets and extension cords as this can result in a risk of fire or electric shock.
8. **Grounding or Polarization:** Precaution should be taken to insure that the grounding or polarization means of an appliance is not defeated.
9. **Severe weather:** In extreme weather such as lightning storm, hurricane, unplug it from the wall outlet and disconnect the antenna or cable system. This will prevent damage to the appliance due to unexpected power surges.
10. **Water and Moisture:** The appliance should not be used near water—for example, near a bathtub, washbowl, kitchen sink, laundry tub, swimming pool, or a wet basement.
11. **Heat:** The appliance should be situated away from heat sources such as radiators, heat registers, stoves, or other appliances (including amplifiers) that produce heat.
12. **Object/Liquid Entry:** Care should be taken so that no object/liquid enter into the enclosure through openings.
13. **Ventilation:** The appliance should not be situated so that its location (on a bed, sofa, rug, or similar surface) or position (such as a bookcase or cabinet) interferes with its proper ventilation.
14. **Mounting:** The appliance should be mounted only as recommended by the manufacturer.
15. **Cleaning:** Only use a soft dry cloth to clean the appliance.
16. **Servicing:** The user should not attempt to service the appliance beyond that described in the user's operating instructions. All other servicing should be referred to qualified personnel.
17. **Replacement Parts:** When replacement parts are required, be sure the service technician has used replacement parts specified by the manufacturer. Unauthorized substitutions may result in fire, electric shock or other hazards.
18. **Damage Requiring Service:** The appliance should be serviced by qualified service personnel when:
 - The power-supply cord or plug has been damaged.
 - Objects have fallen into, or liquid has been spilled into the appliance enclosure.
 - The appliance has been exposed to rain.
 - The appliance has been dropped, or the enclosure damaged.
 - The appliance does not appear to operate normally or exhibits a marked change in performance.
19. **Carts and Stands:** An appliance and cart combination should be moved with care. Quick stops, excessive force, and uneven surfaces cause the appliance and cart combination to overturn.
20. **Non-use Periods:** The power cord of the appliance should be unplugged from the outlet/ The batteries should be removed when the appliance is to be left unused for a long period of time.



Specifications

Bluetooth version 5.0, Range to 10 meters

Speaker output: 15Wx2(5"x2),

Power input: 100-240V \sim 50/60Hz

Adapter output: 16V \equiv 1.5A

Build-in lead-acid battery: 12V \equiv 2600mAH

Note:When the unit is powered by adapter, the power consumption of speakers is 30W; when powered by built-in battery, the actual power consumption of speakers is 20W.

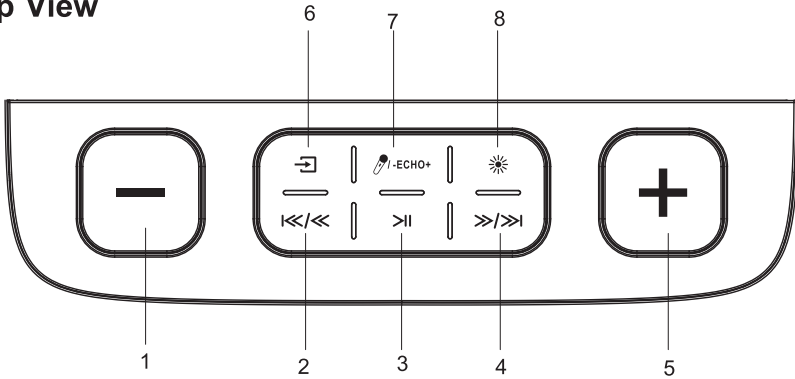
Accessories

Adapter,

Instruction manual.

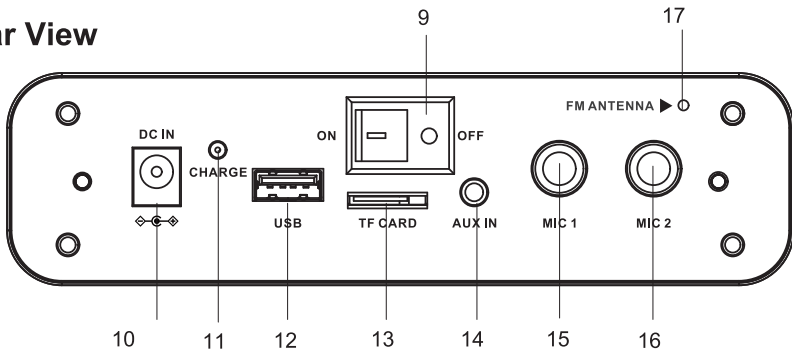
Location of Control

Top View



1. Volume Down button
2. Previous/ Fast Backward button
3. Play /Pause button
4. Next/Fast Forward button
5. Volume Up button
6. Mode button
7. Echo button
8. Light button

Rear View



- | | |
|----------------------|-----------------|
| 9. Power Switch | 10. DC In Jack |
| 11. Charge Indicator | 12. USB Jack |
| 13. TF Card Slot | 14. AUX In Jack |
| 15. MIC1 Jack | 16. MIC 2 Jack |
| 17. FM Antenna | |

Power Source

The unit has a built-in lead-acid battery. Recharge it as below:

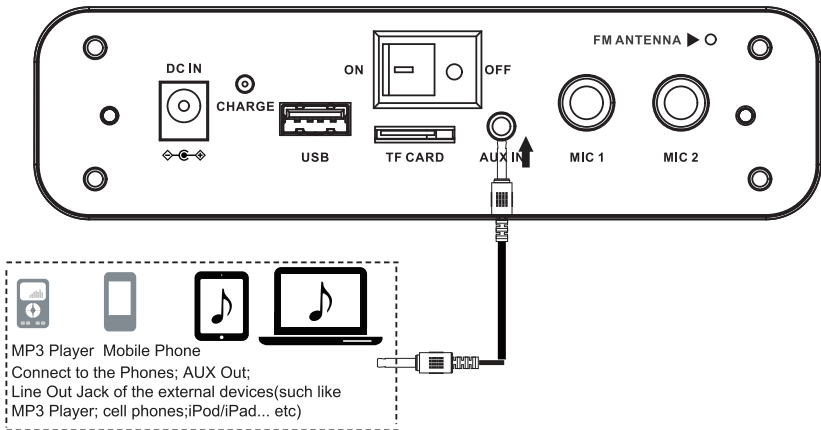
1. Charging by the supplied adapter.
2. Connect the small plug from the adapter to the **DC IN JACK** on the side panel of the unit.
3. Connect the adapter to the wall outlet having AC 100-240V~ 50/60Hz.
 - The adapter is intended to be correctly orientated in a vertical or mount position.
 - Recharge and store the unit within the temperature range of 5°C~35°C.
 - Do not charge longer than 24 hours. Excessive charging or running the unit until battery fully drains will damage battery.
 - If fully charged the unit can play normal music for about 8 hours at 50% volume.
 - Battery life naturally shortens slowly over time.
 - The rechargeable battery incorporated in this product is not user replaceable.
 - If "low battery" is heard when the unit is powered by the built-in battery, it indicates that the power in the battery will be used up. It is advised to connect the player to power supply immediately, or the player will be forced to stop automatically in less than 5 minutes due to lack of power.
 - When the unit is in charge, the Charge indicator will light in red and it will turn to green after fully charged; the indicator will light off when unplug the adapter.
 - If the unit is not in use, please switch off the power to protect the built-in battery.
 - The unit will enter standby state in 20 minutes without tracks playing.

General Operation

1. Connect the small plug from the **adapter** to the **DC IN JACK** on the side control panel of the unit.
2. Connect the **adapter** to the wall outlet having AC 100-240V~ 50/60Hz.
3. Press **POWER ON/OFF SWITCH** to **ON** position to turn on the unit, or **OFF** position to turn off the unit.
4. Press the **Mode** button to change to different modes.
5. Press the **LIGHT** button on the unit repeatedly to switch to different color (Red, Green, Blue). Press and hold the **LIGHT** button to shutdown the light effect, press the **LIGHT** button to activate the light effect.
6. Operating the Device:
 - To play a track, press **▶||** button.
 - Press **▶||** button again to pause the track.
 - To skip to next track, press **▶▶/▶▶** button.
 - To skip to the previous track, press **◀◀/◀◀** button.
 - Adjust the volume to a desired level using the **"+"** or **"-"** button control.

Note: A sound "Max Volume" will be heard when you turn the volume to the max level.

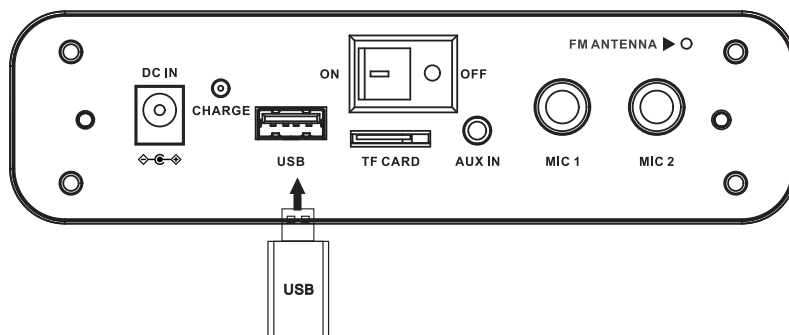
AUX IN Operation



1. Power on the unit by pressing the **Power** button.
2. Insert one end of the 3.5mm AUX in cable(not included) onto the **AUX IN** Jack on the control panel, the other end to external device.
3. Press the **MODE** button on the unit to switch to **AUX IN** mode and you will hear a sound "AUX IN".
4. Start to playback from external device.
5. Adjust the volume to the desired level by pressing the **Volume** buttons.
6. When finish listening, operate the external device to stop playing and unplug the cable from the **AUX IN** jack.

Note: It is highly recommended to set the volume down appropriately to avoid distortion.

USB and TF Card Operation

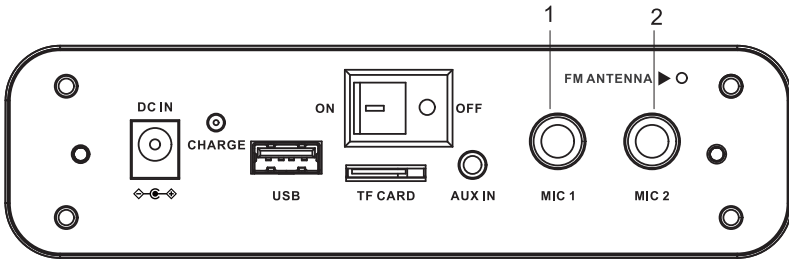


1. Power on the unit by pressing the **Power** button.
2. Insert a USB device (not included) with .mp3 audio files to the **USB Port** and you will hear a sound "USB".
3. The unit will start to playback automatically.
4. Adjust the volume to the desired level by pressing the **Volume** buttons.
5. Press **▶||** button to play/pause the track.
6. Press **◀◀/▶▶** button to skip to previous track, press **▶▶/▶▶** button to skip to next track.
7. Press and hold **▶▶/▶▶** button to fast forward, press and hold **◀◀/◀◀** button to fast rewind.

Notes:

- The operation of TF card (not included) is the same as the USB device apart from the sound of TF card mode is "TF card".
- When the unit is in other modes, it will automatically turn to USB/TF card mode if USB device/TF card is inserted; if you want to turn to other modes, press the **Mode** button to switch.
- When the unit is inserted into both the USB device and TF card, the latter one inserted will be played.
- Please be sure to press **PLAY/PAUSE** button and turn the unit **OFF** before removing the USB device to avoid damage the USB/TF card and system.
- In case the USB device is not compatible, please try another USB memory drive.
- The unit might not support all multimedia files stored in USB/TF card. Some special tracks may not be compatible and cannot be played.

Microphone Connection



1. Connect a microphone (not included) into **Mic jack 1** as well as **Mic jack 2** when desired.
2. To adjust the volume of your Microphone, firstly press the **ECHO** button and then press the **Volume** buttons.
3. Press and hold **ECHO** button to turn off the echo effect, press again to turn on the echo effect.

Notes:

- Do not drop or tap the Mic as damage to the Mic or speakers may occur.
- Do not twirl the microphone cord as it will cause damage to the encased wiring.

Bluetooth Operation

1. Power on the unit by pressing the **Power** button.
2. Press the **Mode** button to change to Bluetooth mode and you will hear "Bluetooth mode".
3. Power on the external Bluetooth device, activate the Bluetooth and enter searching mode.
4. When the pairing name of the unit "**MX-BTS300**" appear, select it and make pairing.
5. After successful pairing, you will hear a sound "connected".
6. Press and hold the **Play/Pause** button to disconnect or reconnect the current connection, you will hear the corresponding sound "disconnected" or "connected".
7. Press **Play/Pause** button to play/stop the music, press **⏮/⏪** button or **⏩/⏭** button to skip to previous track or next track.

Radio Operation

1. Power on the unit by pressing the **Power** button.
2. Press the **Mode** button to change to FM mode and you will hear a sound "FM".
3. Press and hold **⏮/⏪** or **⏩/⏭** button to search for stations automatically, it will stop searching and start to play the station when the unit receive the available station; if you want to listen to another station, repeat the operation before.
4. Press **⏮/⏪** or **⏩/⏭** button to search available station one by one manually.
5. If a station received, the unit will play automatically.
6. Press the volume buttons to adjust the volume level.

Automatic Station Scan and Store

1. Press and hold **Play/Pause** button to scan for stations and store automatically.
2. It will play the first station stored automatically after scanning.
3. Press the **Play/Pause** button to change stations.

Troubleshooting Guide

Should this unit exhibit a problem, check the following before seeking service:

No Power

- Power is not on; press the **Power** Button to turn power on.
- Confirm that the AC adapter is connected securely to the back of unit.
- Connect the unit to a different outlet.

No Sound

- The **Volume** button is set to minimum; raise volume.
- Correct mode was not selected; select using the **Mode** button.
- If using an external device, raise the volume.

No sound from the microphone

- Make sure the microphone is firmly connected to the MIC1 or MIC2 jack.
- Make sure the mic's ON/OFF switch is set to the ON position.
- The Volume control is set to minimum; raise volume.

File on USB jack not playing

- The file is corrupted; replace the file.
- The file is not in a format this unit will play.
- The connected USB device is not supported by the product.

The Bluetooth device cannot be paired or connected with this unit

- The system is not in pairing mode; press the **Mode** button to restart pairing.
- The external device is too far from the unit.

mem:rex®