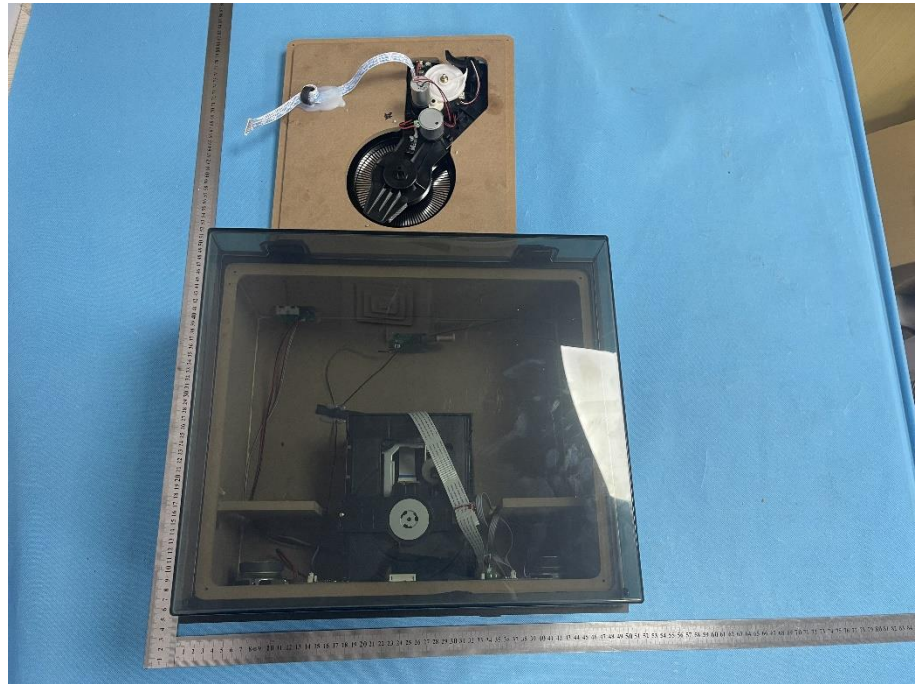
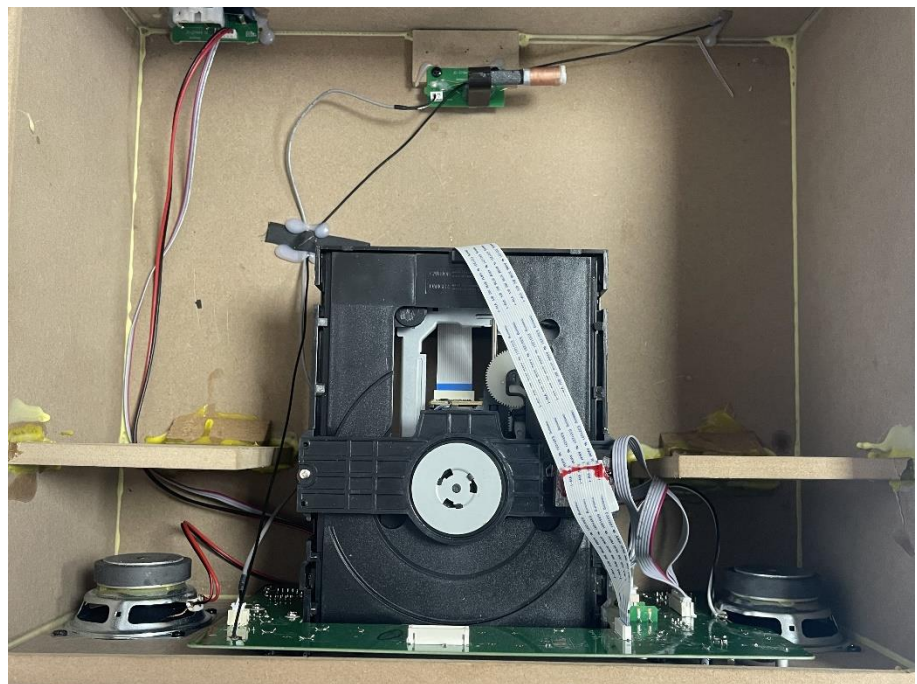


### EXHIBIT 3 - EUT INTERNAL PHOTOGRAPHS

**EUT Housing and Board View 1**

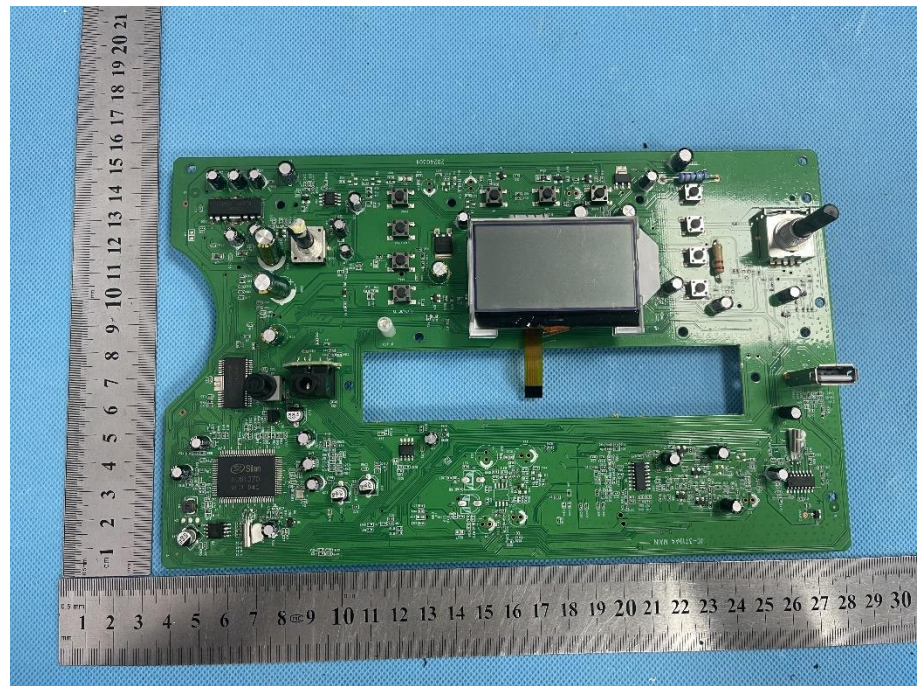


**EUT Housing and Board View 2**

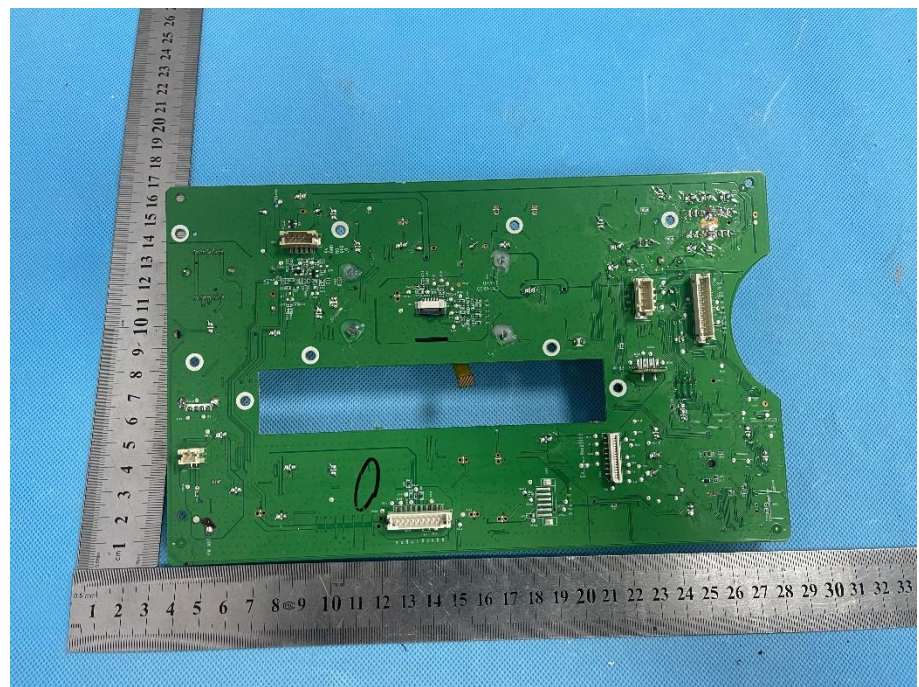




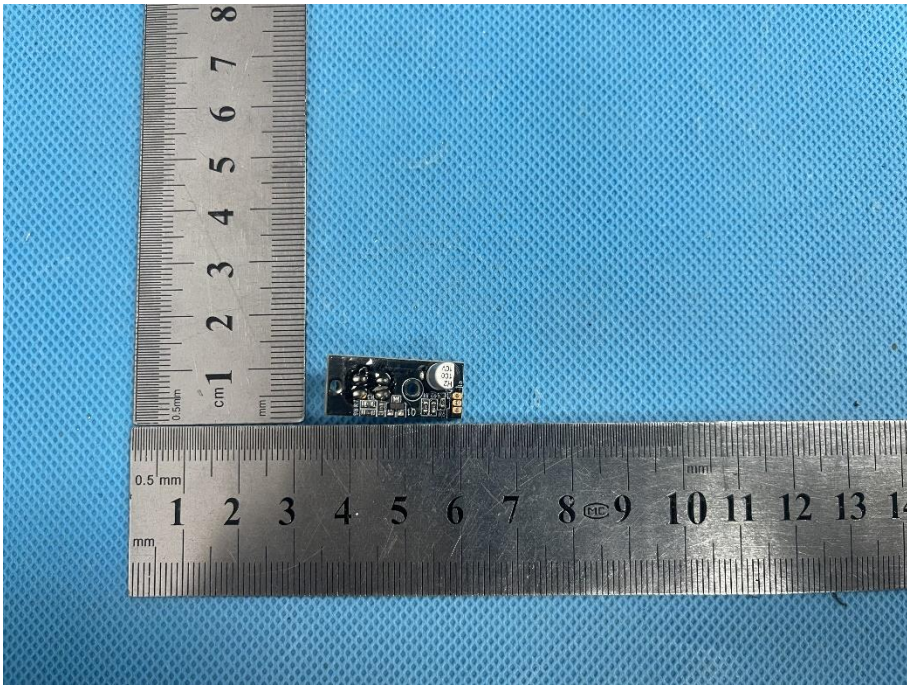
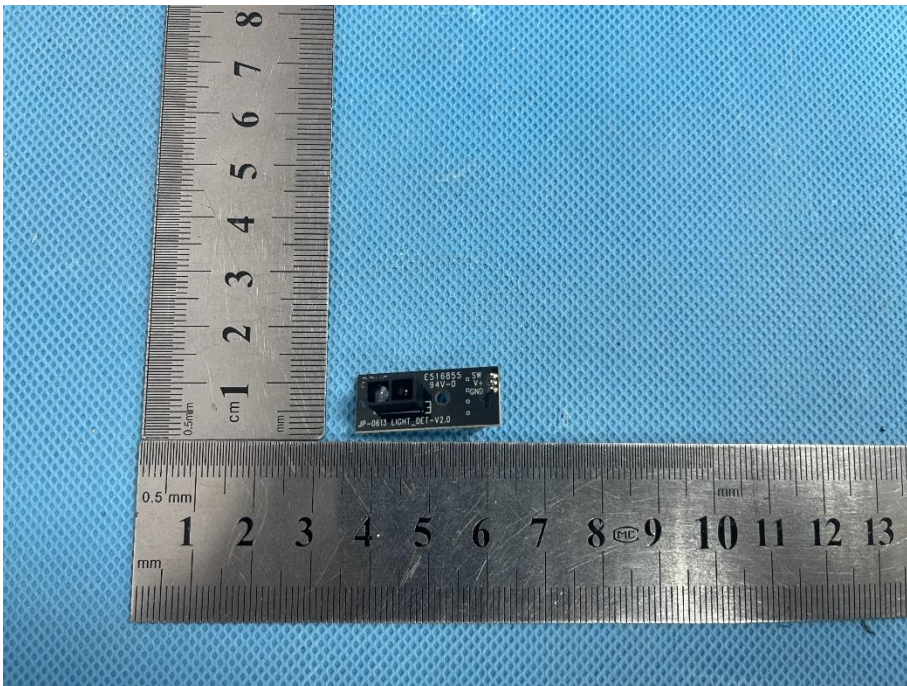
**Solder  
Board-Component  
View 1**



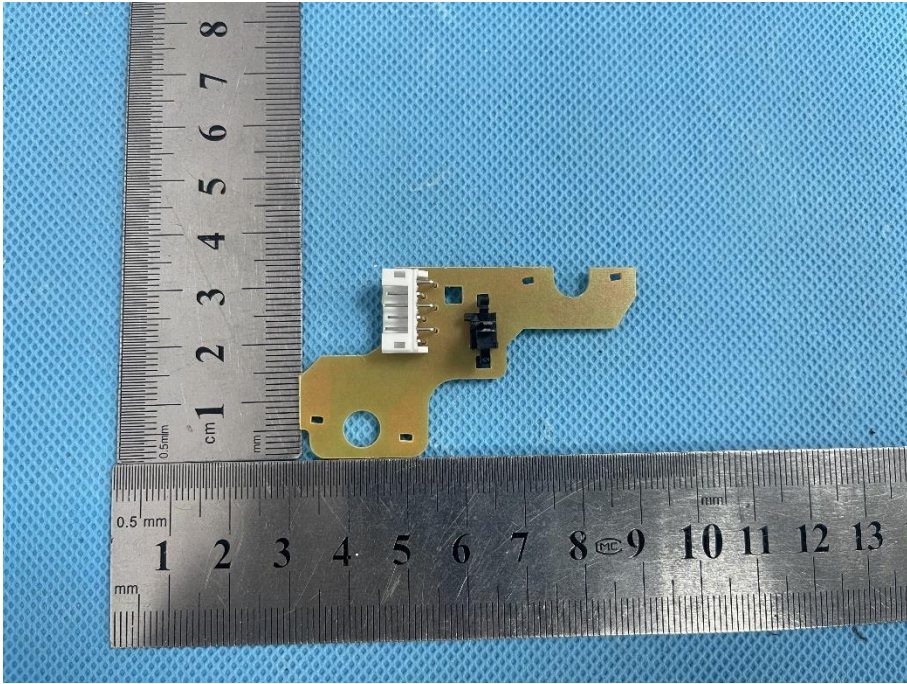
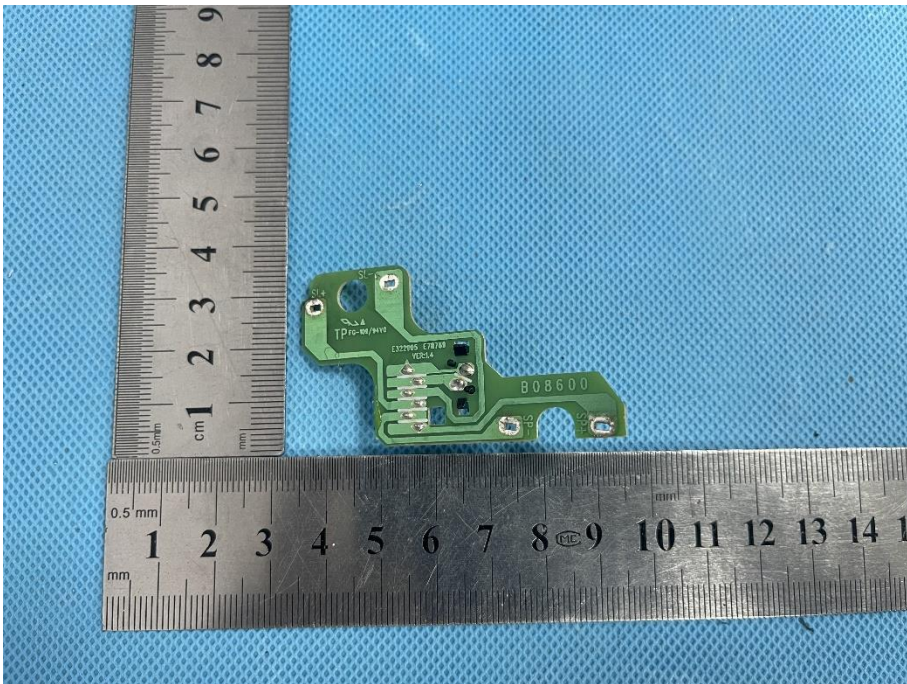
**Solder  
Board-Component  
View 2**





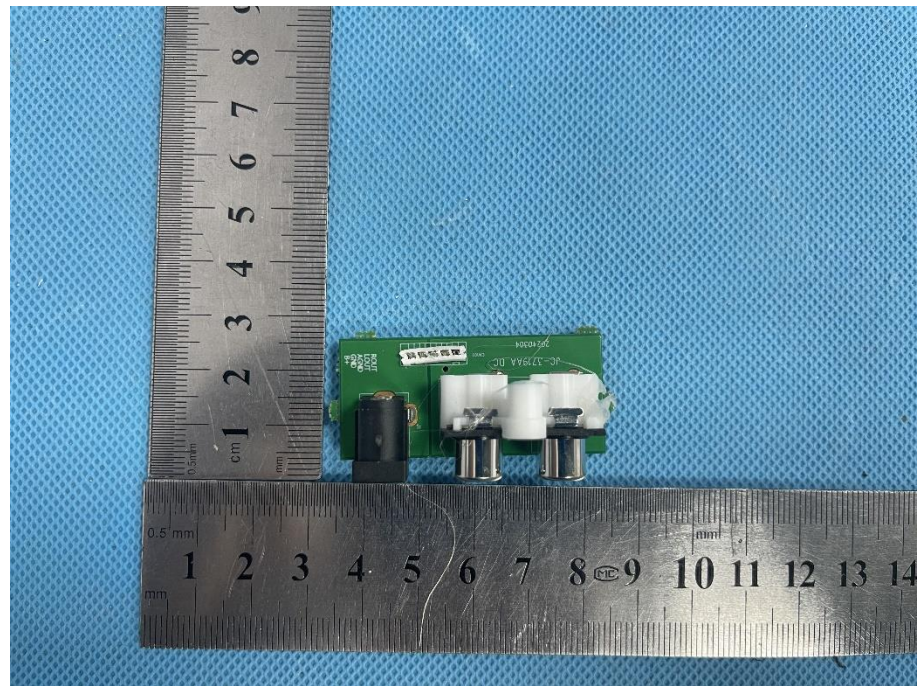
<p><b>Solder Board-Component View 3</b></p>	 A photograph of a small, rectangular solder board component. The component is dark in color and has several small, circular components (likely LEDs or sensors) mounted on its surface. It is placed on a blue, textured background. Two metal rulers are used for scale: one vertical ruler on the left and one horizontal ruler at the bottom. The vertical ruler shows the component is approximately 1.5 cm high. The horizontal ruler shows the component is approximately 1.5 cm wide.
<p><b>Solder Board-Component View 4</b></p>	 A photograph of the same solder board component from a different angle. The component is dark and has several small, circular components mounted on its surface. It is placed on a blue, textured background. Two metal rulers are used for scale: one vertical ruler on the left and one horizontal ruler at the bottom. The vertical ruler shows the component is approximately 1.5 cm high. The horizontal ruler shows the component is approximately 1.5 cm wide. The component has some text printed on it, including "ES16855", "SW", "POND", and "JP-0613 LIGHT_GCT-V2.0".



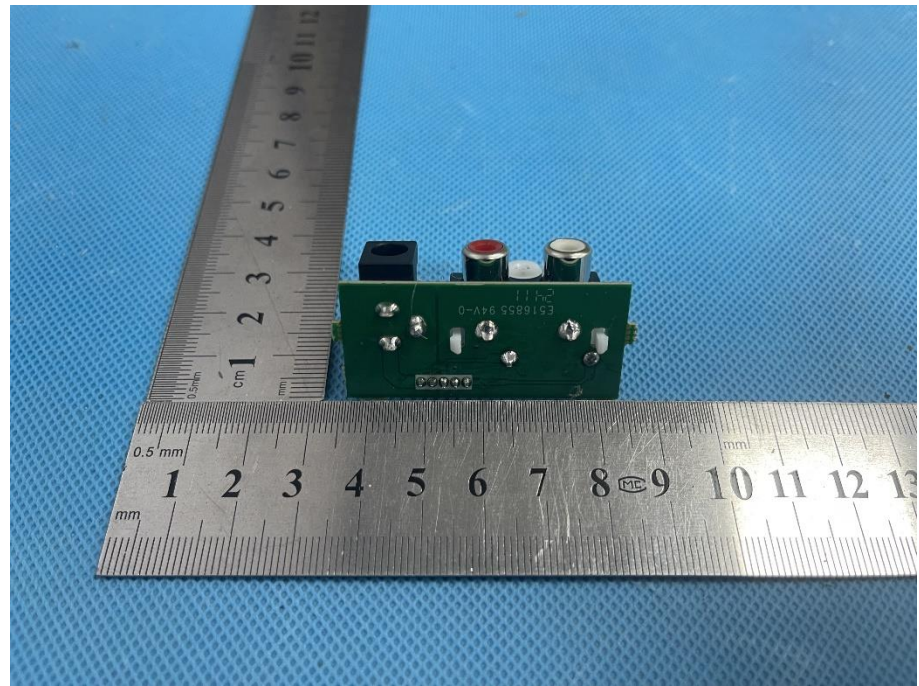
<p><b>Solder Board-Component View 5</b></p>	 A photograph of a yellow solder board component with a white connector and a black component. It is placed on a blue textured surface next to a metal ruler for scale. The ruler shows centimeter and millimeter markings.
<p><b>Solder Board-Component View 6</b></p>	 A photograph of a green solder board component with various electronic components and markings. It is placed on a blue textured surface next to a metal ruler for scale. The ruler shows centimeter and millimeter markings. Markings on the board include "TP100-WH/44V2", "C322905 678100 Y2024", and "B08600".



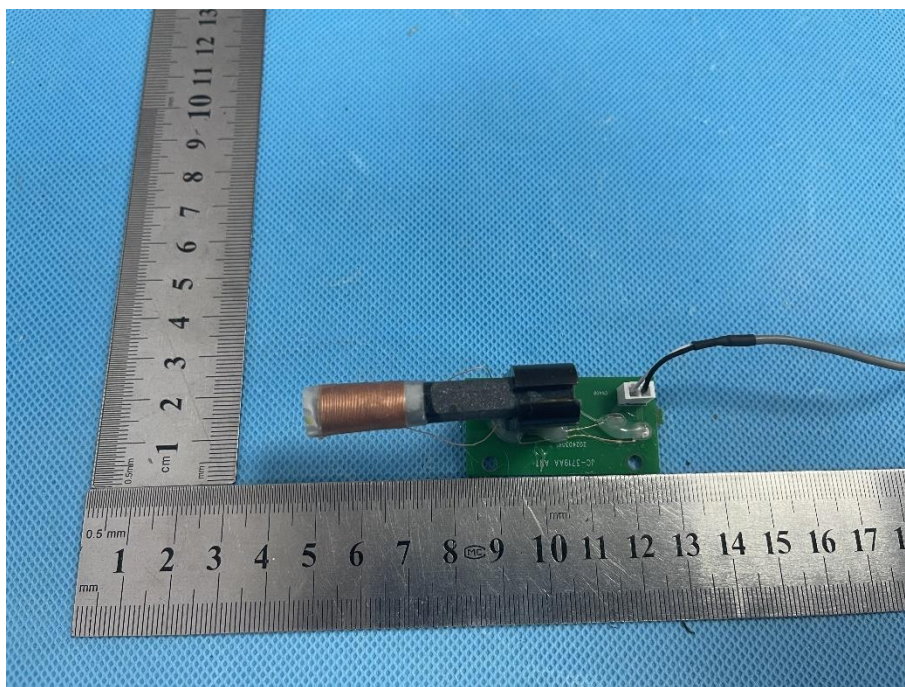
**Solder  
Board-Component  
View 7**



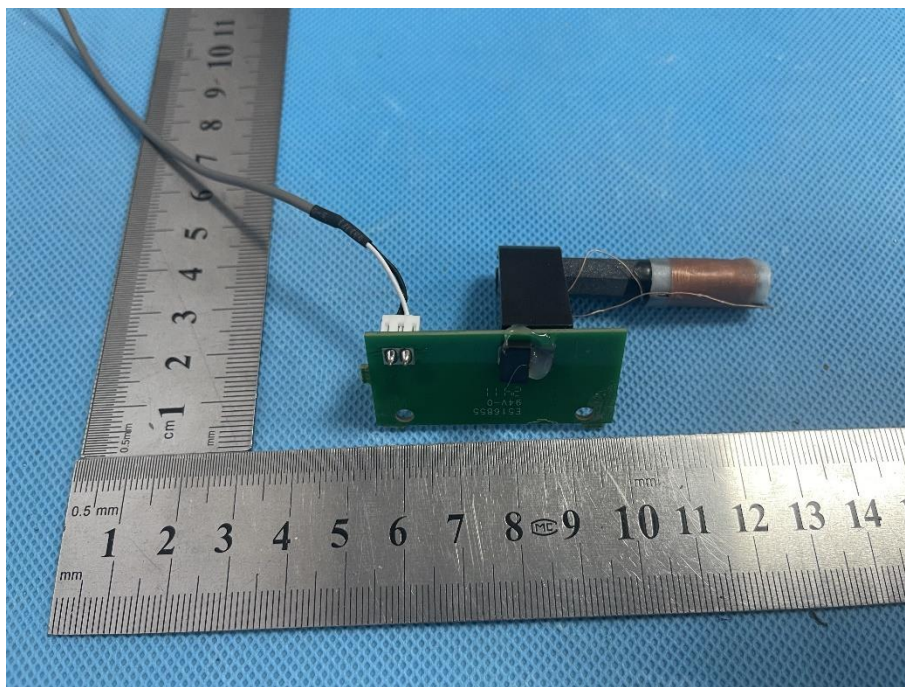
**Solder  
Board-Component  
View 8**



**Solder  
Board-Component  
View 9**

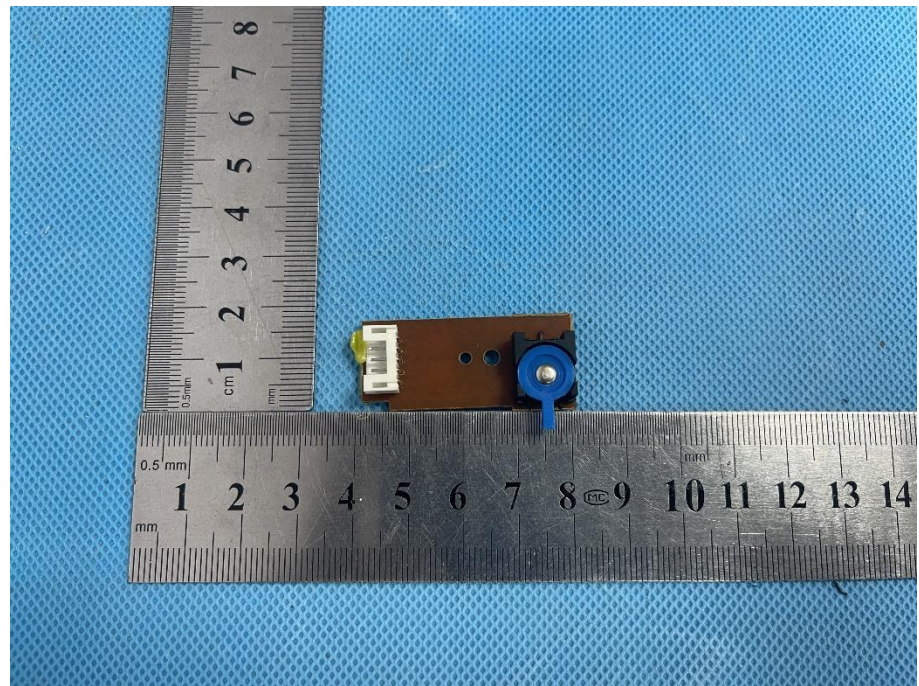


**Solder  
Board-Component  
View 10**

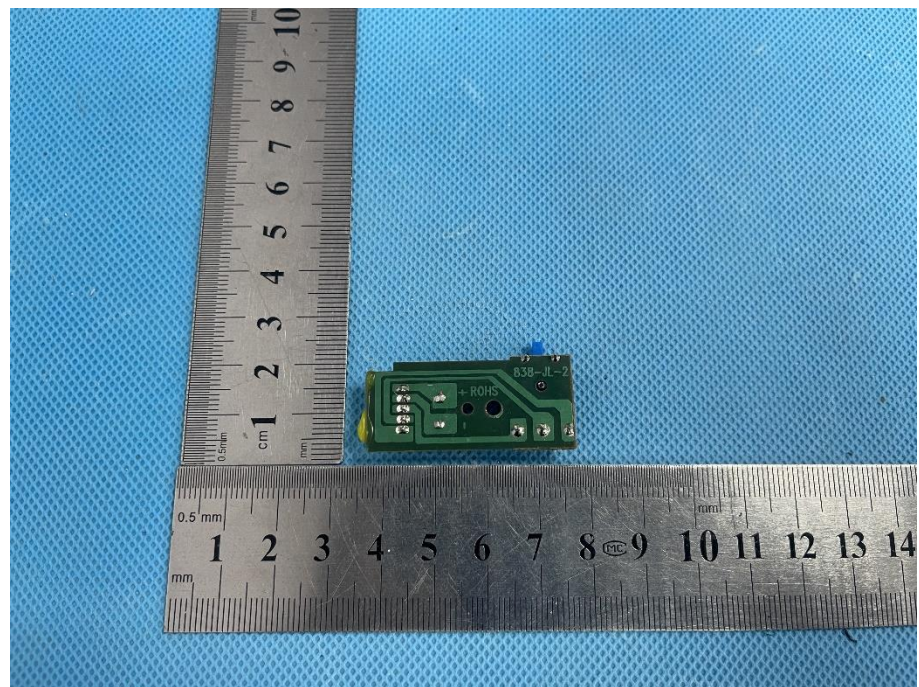




**Solder  
Board-Component  
View 11**

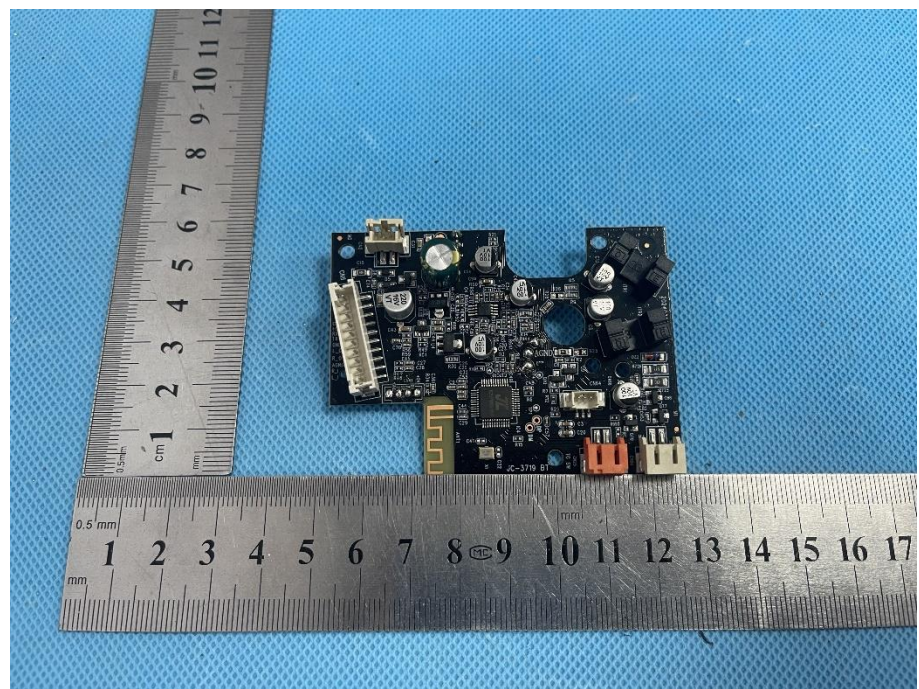


**Solder  
Board-Component  
View 12**

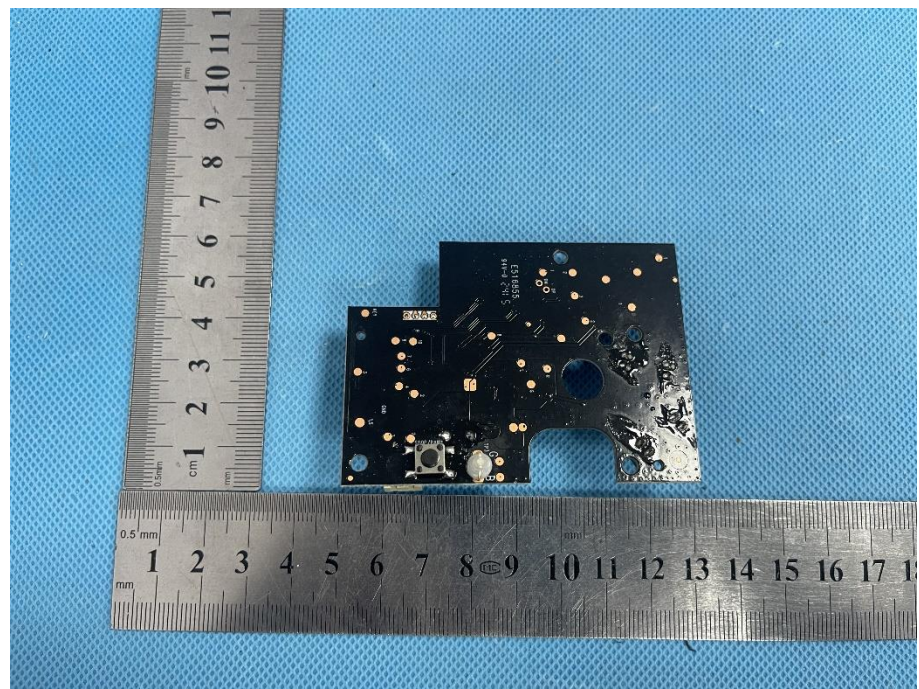




**Solder  
Board-Component  
View 13**

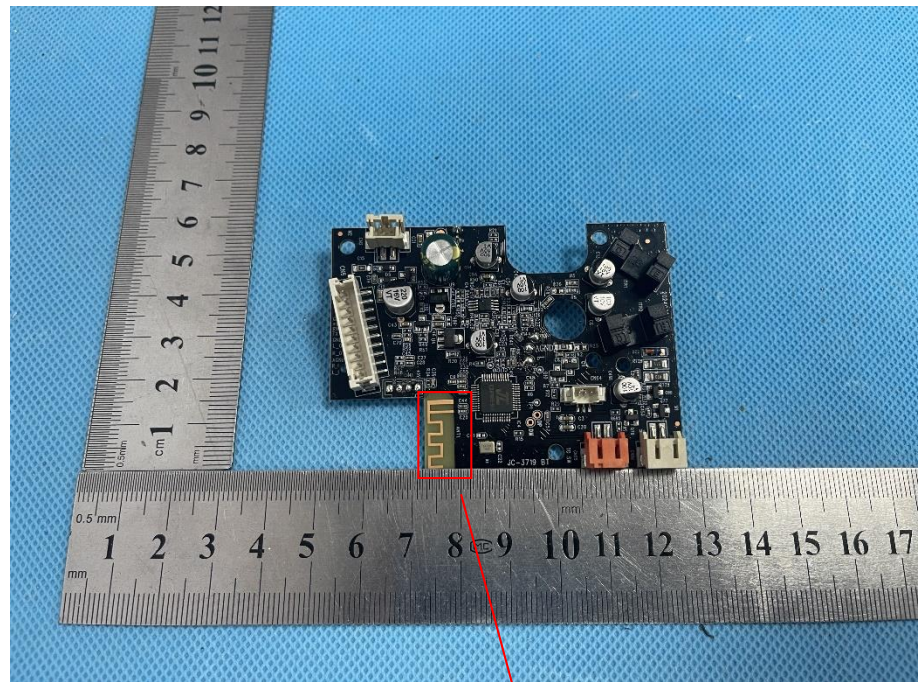


**Solder  
Board-Component  
View 14**





**Antenna View 1**



**BT Ant.**