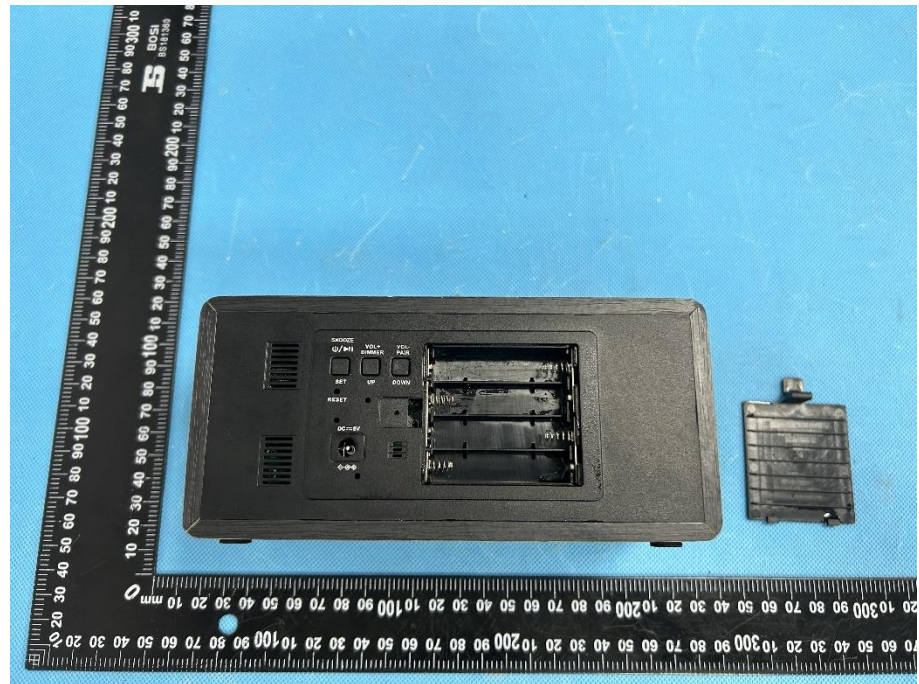
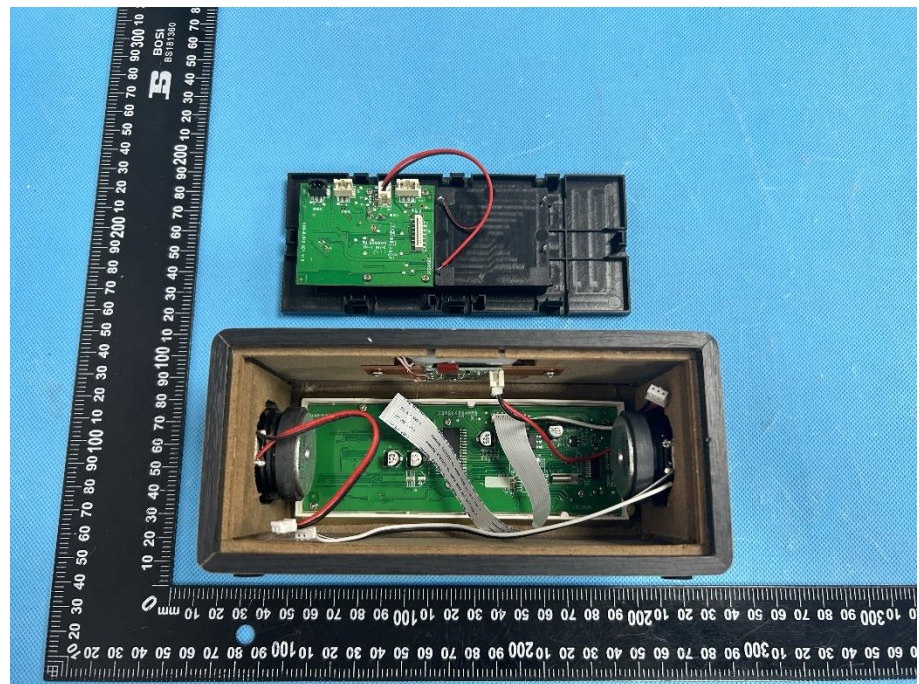


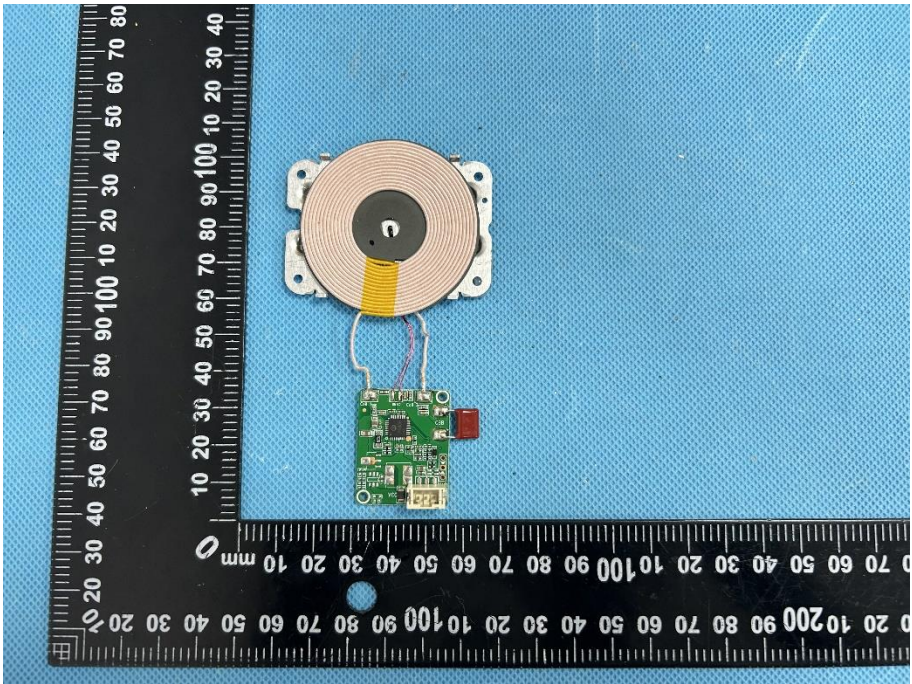
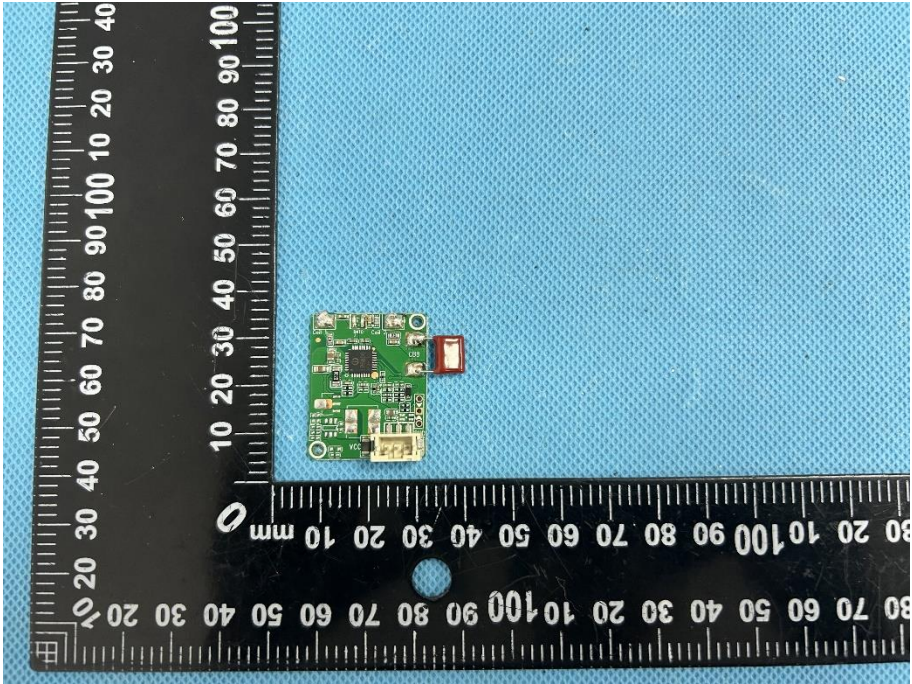
EXHIBIT 3 - EUT INTERNAL PHOTOGRAPHS

EUT Housing and Board View 1

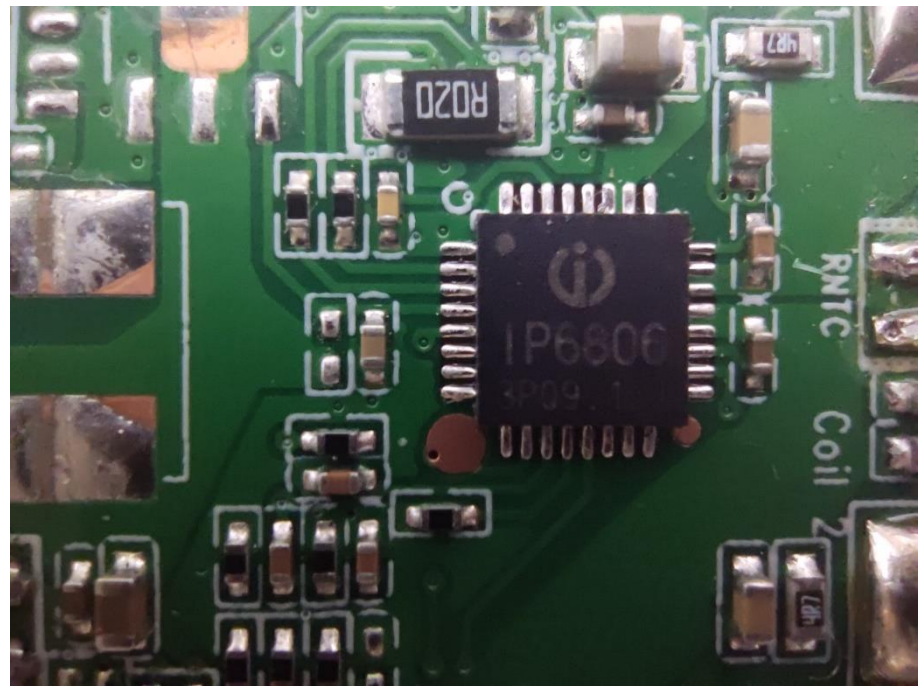


EUT Housing and Board View 2

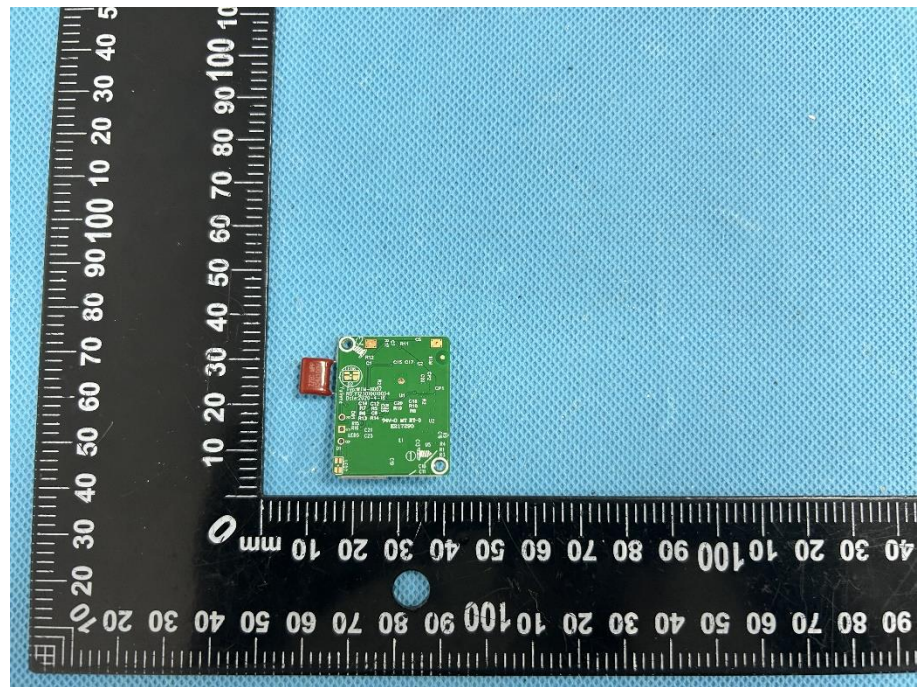


<p>Solder Board-Component View 1</p>	 <p>A photograph showing a solder board component. The component consists of a circular coil of thin metal wires mounted on a white substrate, connected to a small green printed circuit board (PCB) via two thin wires. The PCB has various components, including a red component and a gold-plated connector. A black ruler with white markings is placed to the left and bottom of the component for scale, showing measurements in millimeters.</p>
<p>Solder Board-Component View 2</p>	 <p>A photograph showing a solder board component, similar to View 1 but from a different angle. It focuses on the green PCB and the gold-plated connector. The circular coil is visible in the background. A black ruler with white markings is placed to the left and bottom of the component for scale, showing measurements in millimeters.</p>

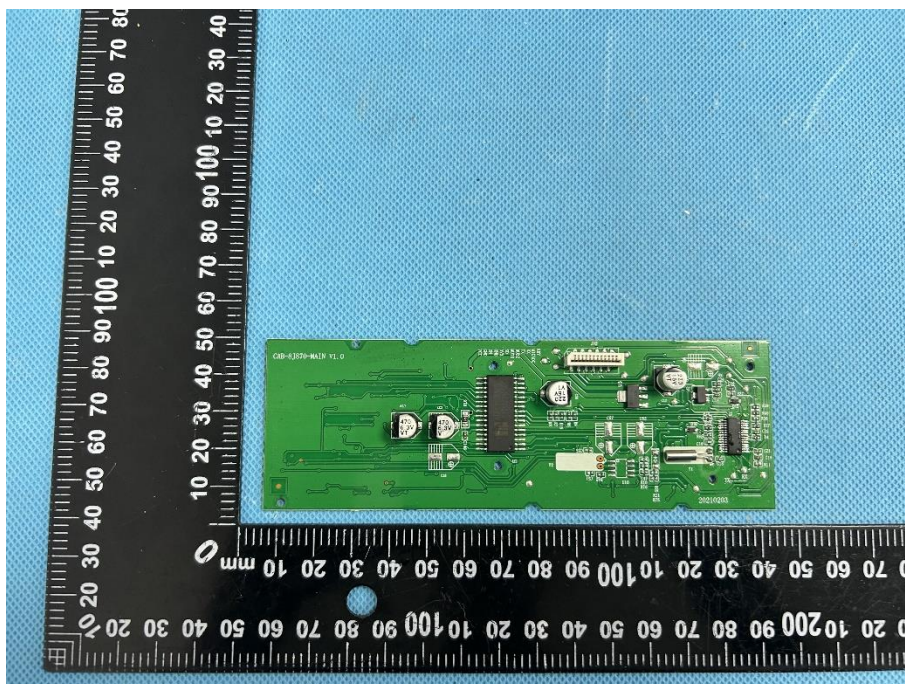
**Solder
Board-Component
View 3**



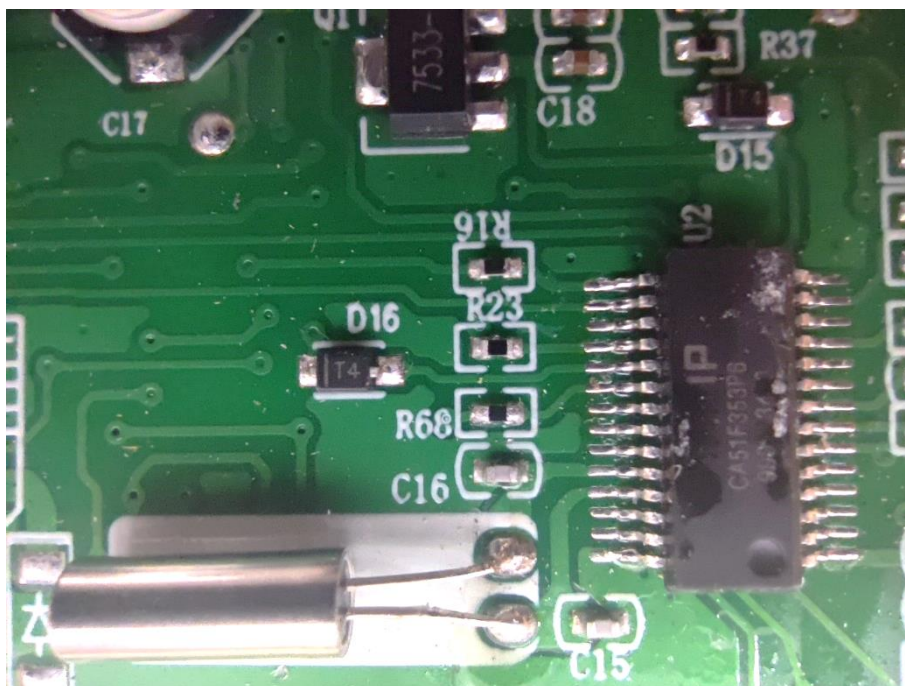
**Solder
Board-Component
View 4**



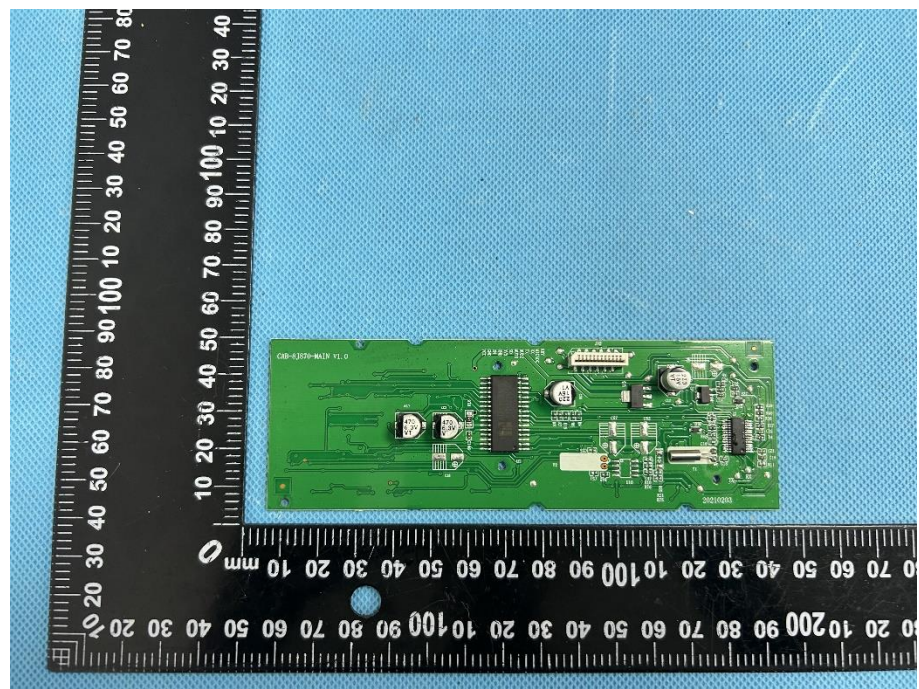
**Solder
Board-Component
View 5**



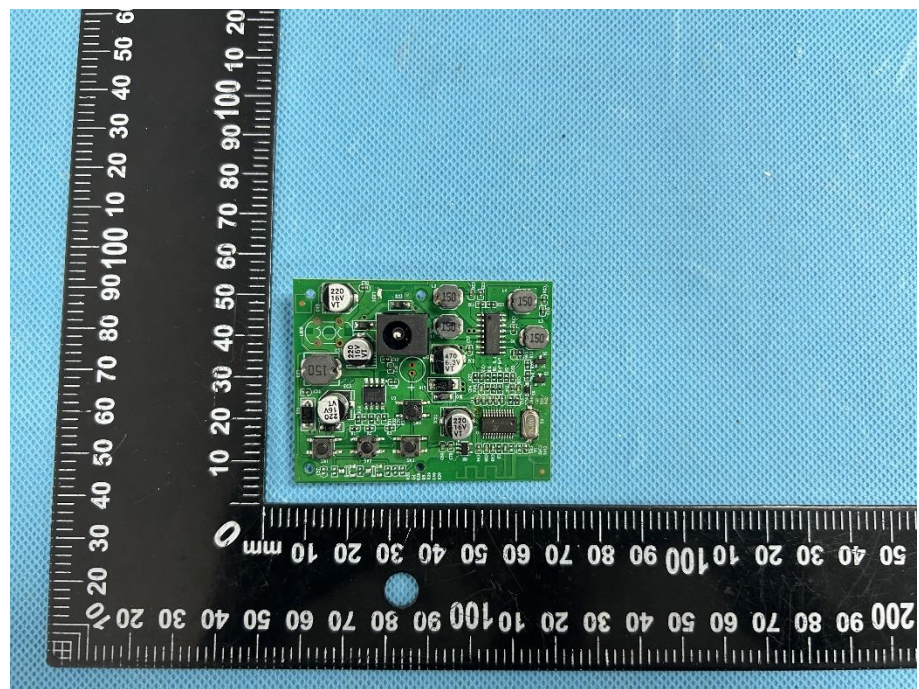
**Solder
Board-Component
View 6**



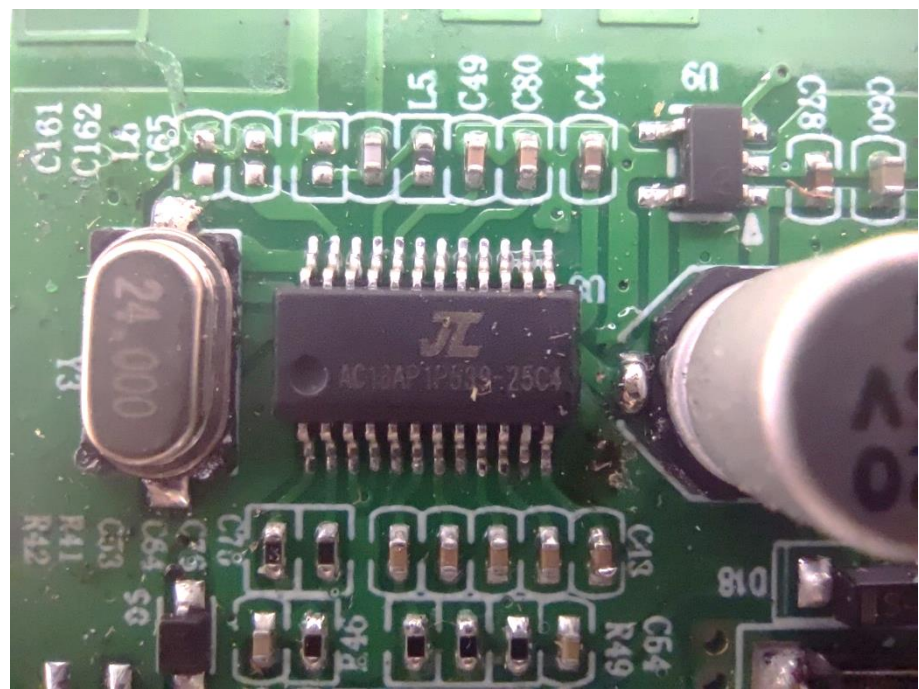
**Solder
Board-Component
View 7**



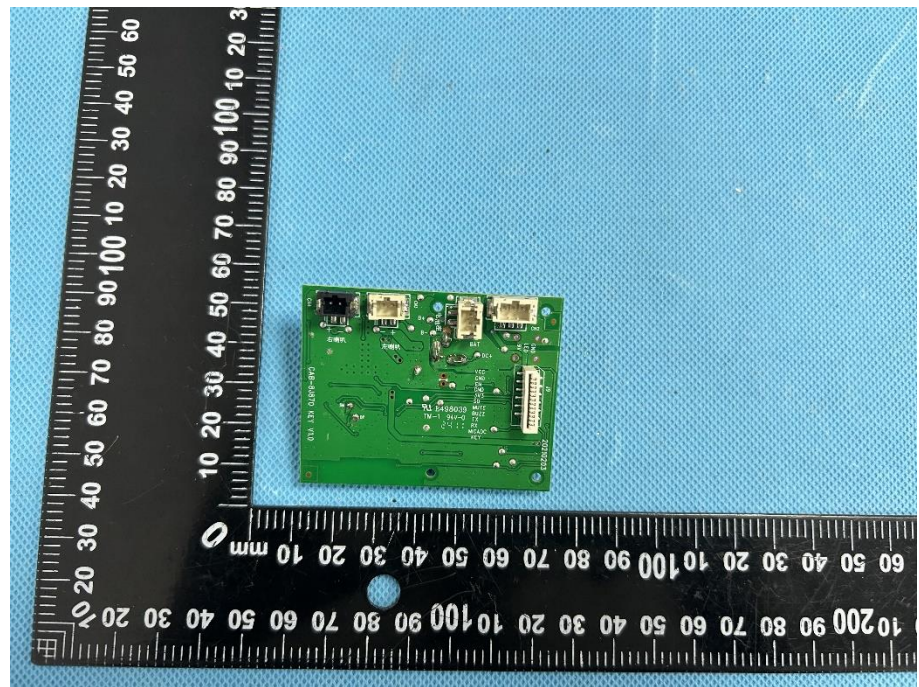
**Solder
Board-Component
View 8**



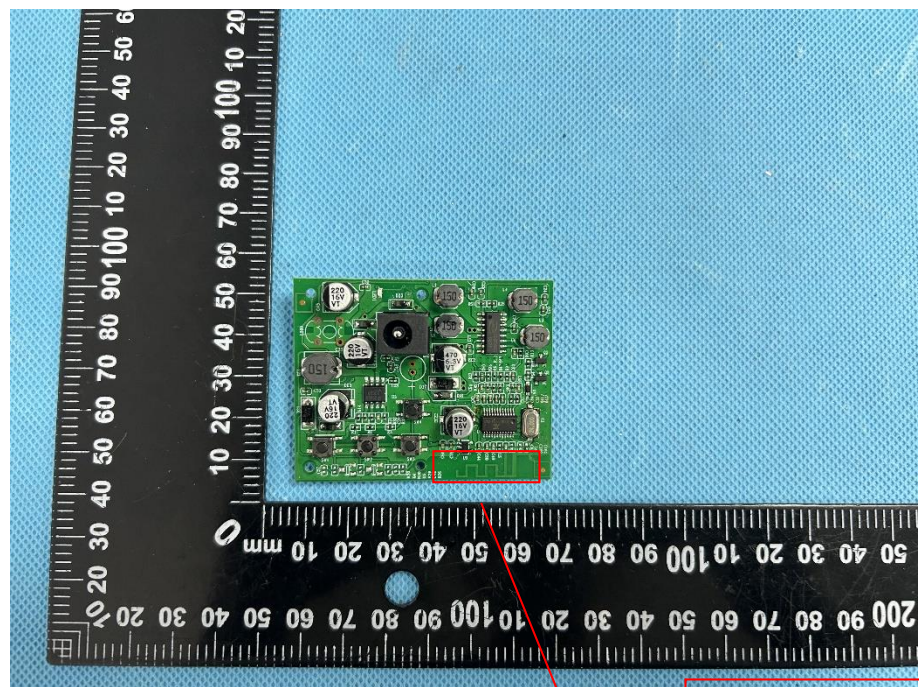
**Solder
Board-Component
View 9**



**Solder
Board-Component
View 10**

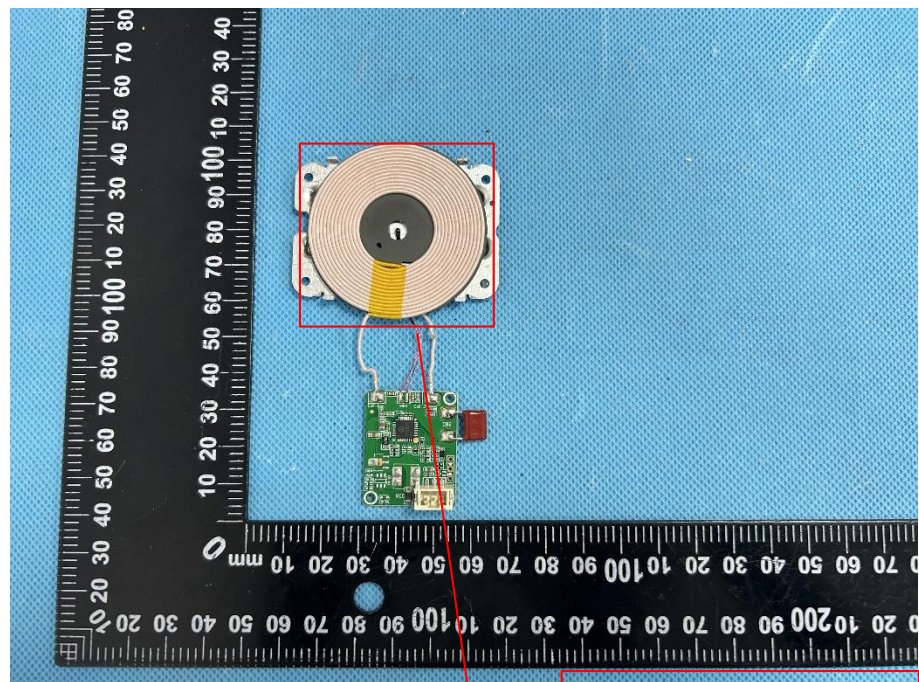


Antenna View 1



BT Ant.

Antenna View 2



Wireless Charging Ant