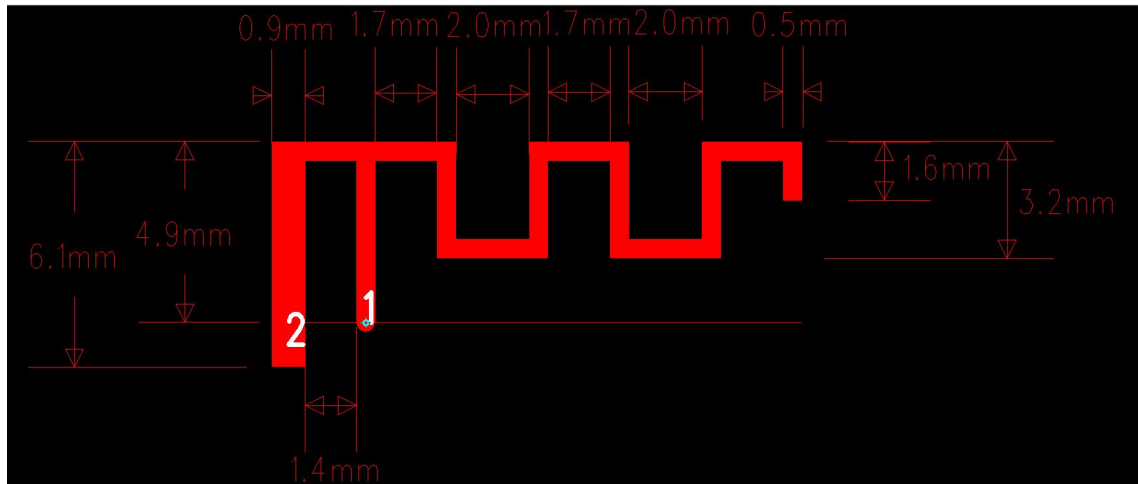


2.4G-2.48G 频段板载 PIFA 天线规格书

2.4G-2.48G Inverted F Antenna Specification

| SPECIFICATIONS | |
|------------------------|--|
| Frequency (MHz) | 2400-2480 |
| Peak Gain (dBi) | 2.499 |
| Average Gain (dBi) | >-4 |
| VSWR | <3.2 |
| Impedance (Ω) | 50 Ω |
| Antenna Type | Plannar Inverted F Antenna on board |
| Polarization | Linear |
| Manufacture | ZHUHAI JIELI TECHNOLOGY CO.,LTD |
| Address: | No.333 Kexing Road, Nanping Science Park, Xiangzhou District, Zhuhai |
| Test equipment | HWA-TECH |

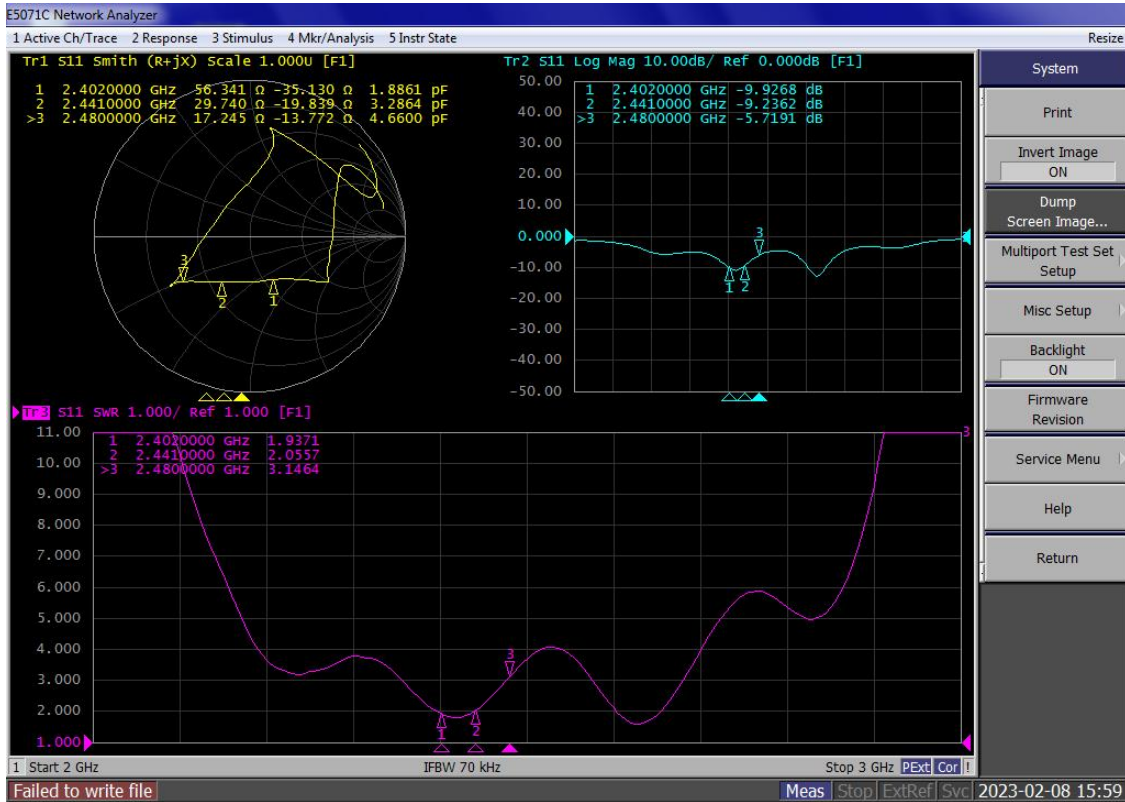
Antenna Photo & Length (mm)



天线无源 S 参数:

Antenna passive S-parameters:

驻波比 (VSWR)、回波损耗 (Return Loss) 及史密斯圆图 (Smith)



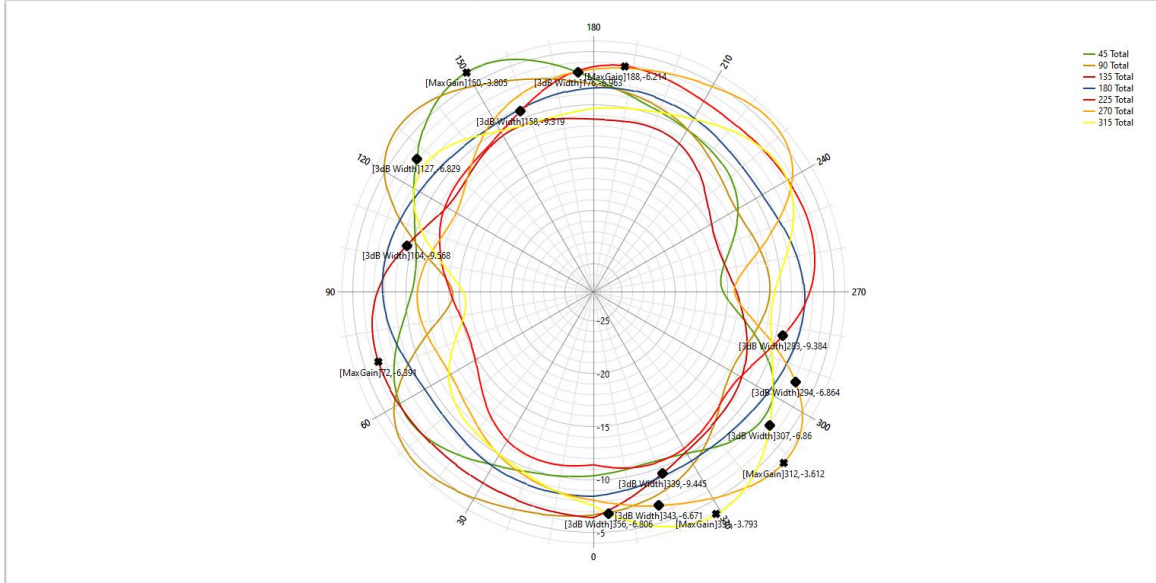
天线效率及增益:

Antenna efficiency and gain:

| Frequency (MHz) | Gain (dBi) | Efficiency (%) | AverageGain (dBi) | Efficiency (dB) |
|-----------------|------------|----------------|-------------------|-----------------|
| 2400 | 1.433 | 59.329% | -2.717 | -2.267 |
| 2410 | 0.927 | 51.861% | -3.416 | -2.852 |
| 2420 | 0.829 | 52.112% | -3.166 | -2.831 |
| 2430 | 0.881 | 49.299% | -3.258 | -3.072 |
| 2440 | 1.192 | 50.672% | -3.144 | -2.952 |
| 2450 | 1.688 | 53.067% | -2.735 | -2.752 |
| 2460 | 2.194 | 59.423% | -2.276 | -2.260 |
| 2470 | 2.118 | 56.680% | -2.438 | -2.466 |
| 2480 | 2.499 | 61.727% | -2.112 | -2.095 |
| Average | 1.529 | 54.908% | -2.806 | -2.616 |
| Peak | 2.499 | 61.727% | -2.112 | -2.095 |

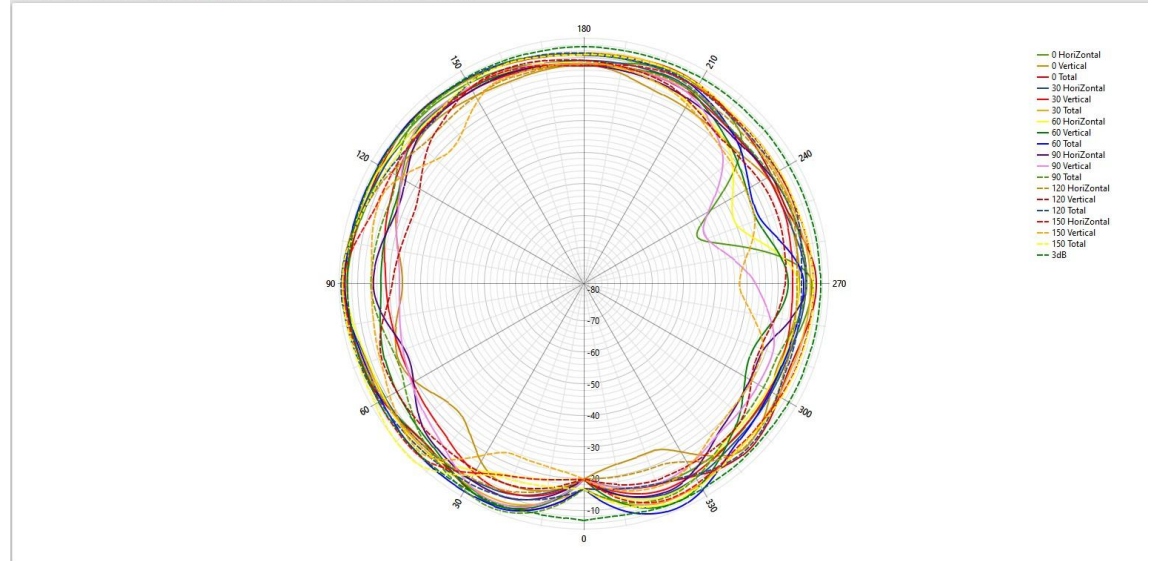
天线 2440MHz 2D-Theta Pattern

2D-Theta 2D-Line-Theta 2D-Phi 2D-Line-Phi DataLine HeatMap 3D

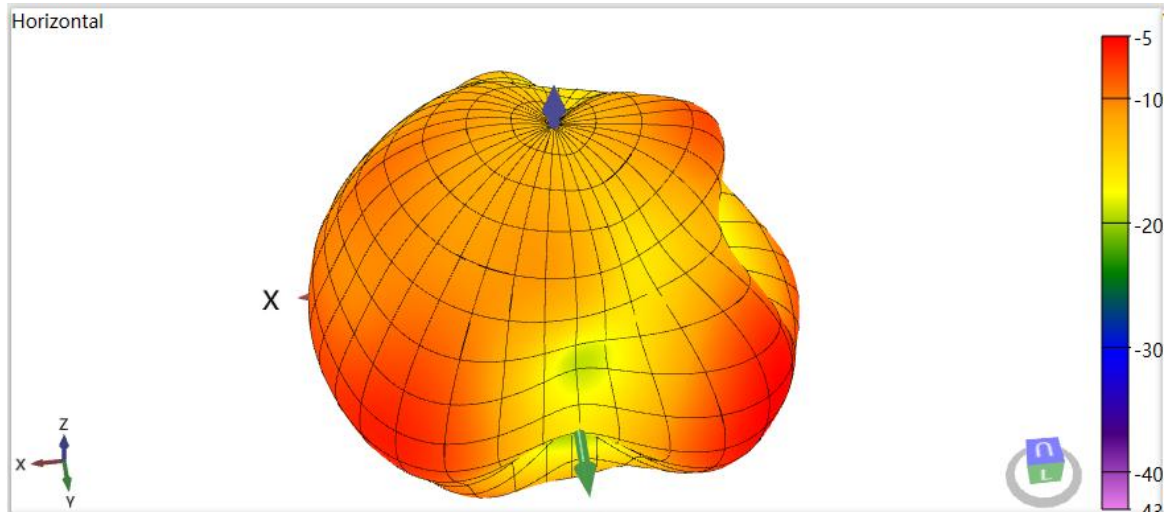


天线 2440MHz 2D-Phi Pattern

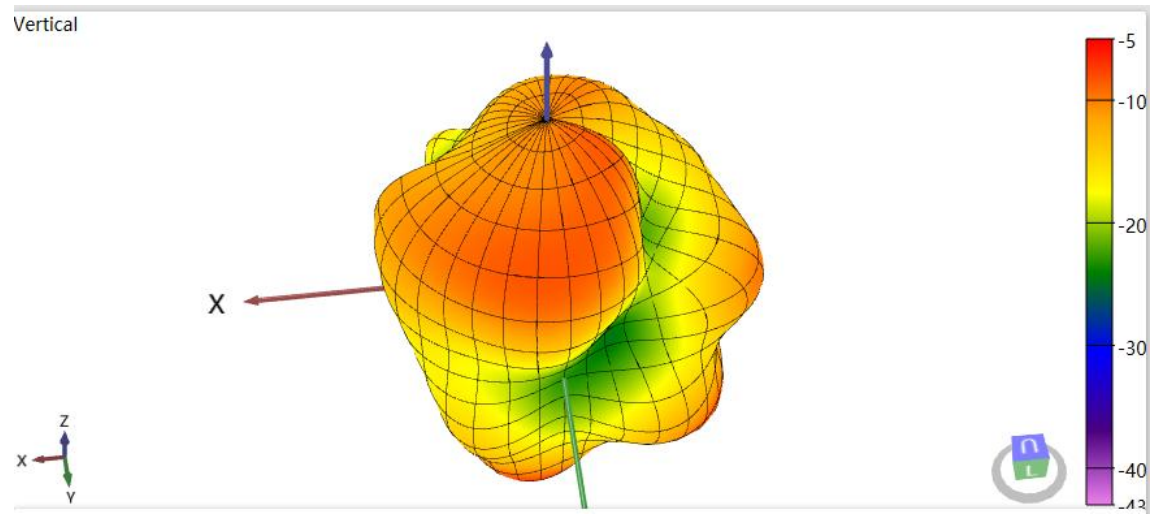
2D-Theta 2D-Line-Theta 2D-Phi 2D-Line-Phi DataLine HeatMap 3D



天线 2440MHz 3D-Horizontal Pattern



天线 2440MHz 3D-Vertical Pattern



2440MHz 3D-Total Pattern

