



## PRODUCT SPECIFICATION

Customer:

Customer's part number:

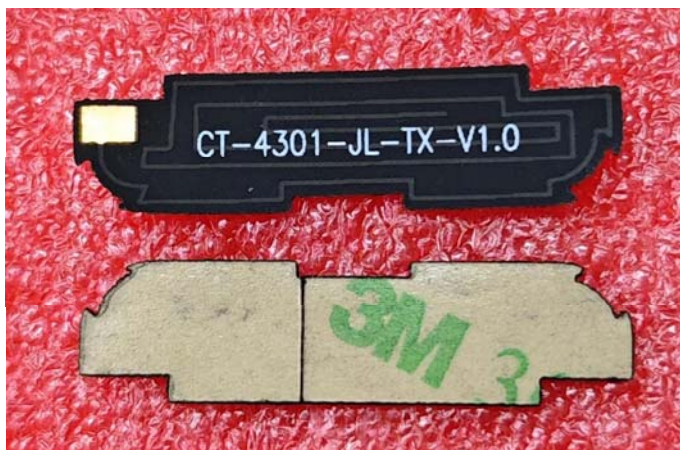
Product description: FPC-433 Antenna

Uni Link's part number: 433-FPC-CT-4301-JL-TX-V1.0

Issue Date: 2024-01-16

Note: 423-443MHz

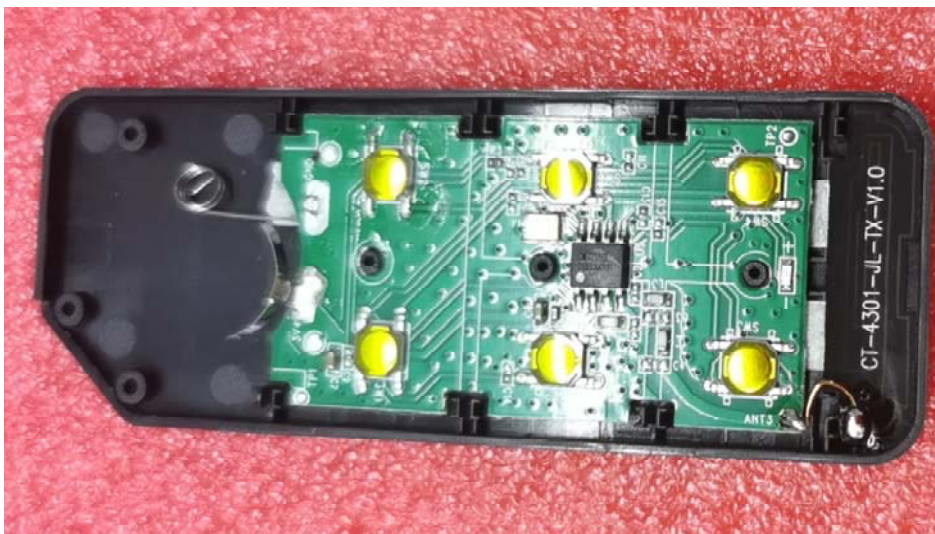
Customer Use		Customer's authorized signature	Remarks
Full approved			
Conditional approved			
Rejected			



一、 (PRODUCT TECHNICAL SPECIFICATION)

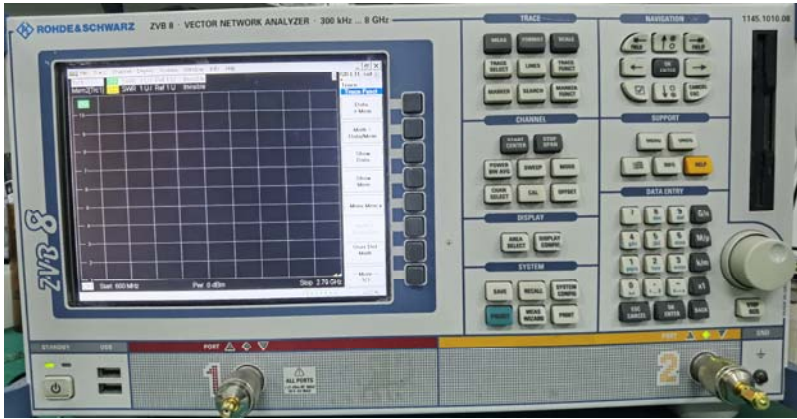
Electrical Specifications	
Frequency Range (MHz)	422-443
V.S.W.R	$\leq 3.0$
Mechanical Specifications	
Antenna Length (mm)	$29.4*7.3 \pm 0.5\text{mm}$
Cable (mm)	/
Connect Type	/
Mounting	Paste type
Color of Cable	Black
(Operating Temperature)	$-30^{\circ}\text{C} \sim +75^{\circ}\text{C}$
Working humidity (%)	0%-95%
(Storing Temperature)	$-35^{\circ}\text{C} \sim +80^{\circ}\text{C}$
Storage humidity (%)	0%-95%

二、 Installation position diagram:



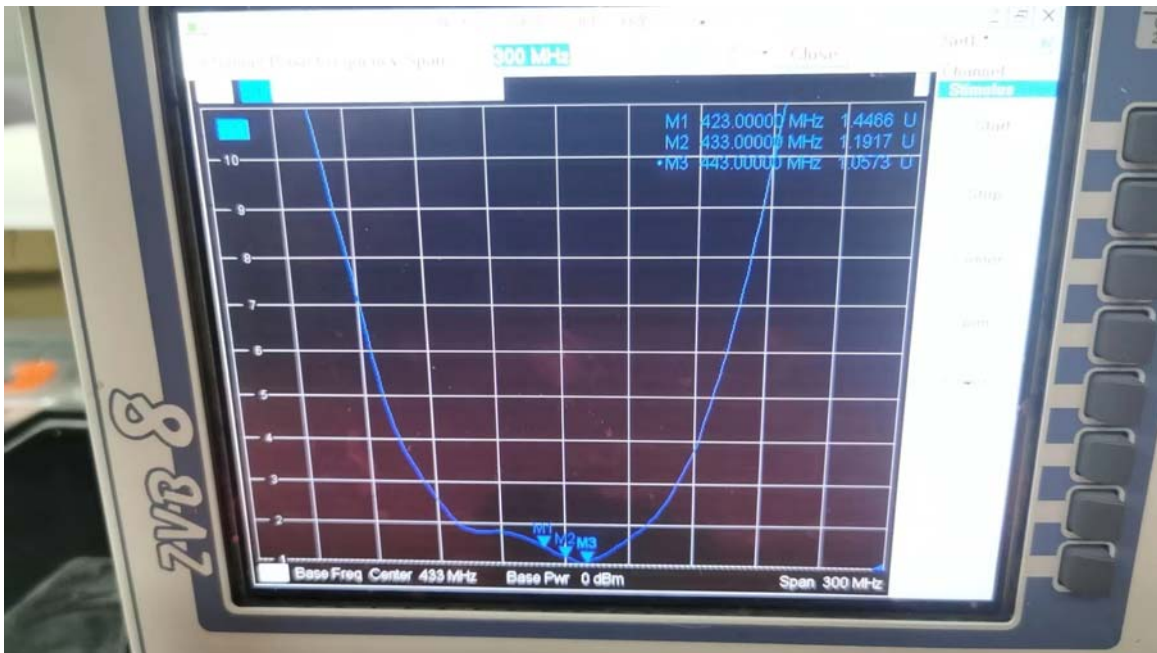
## 二、 Test data:

### 1. Standing wave measuremen:

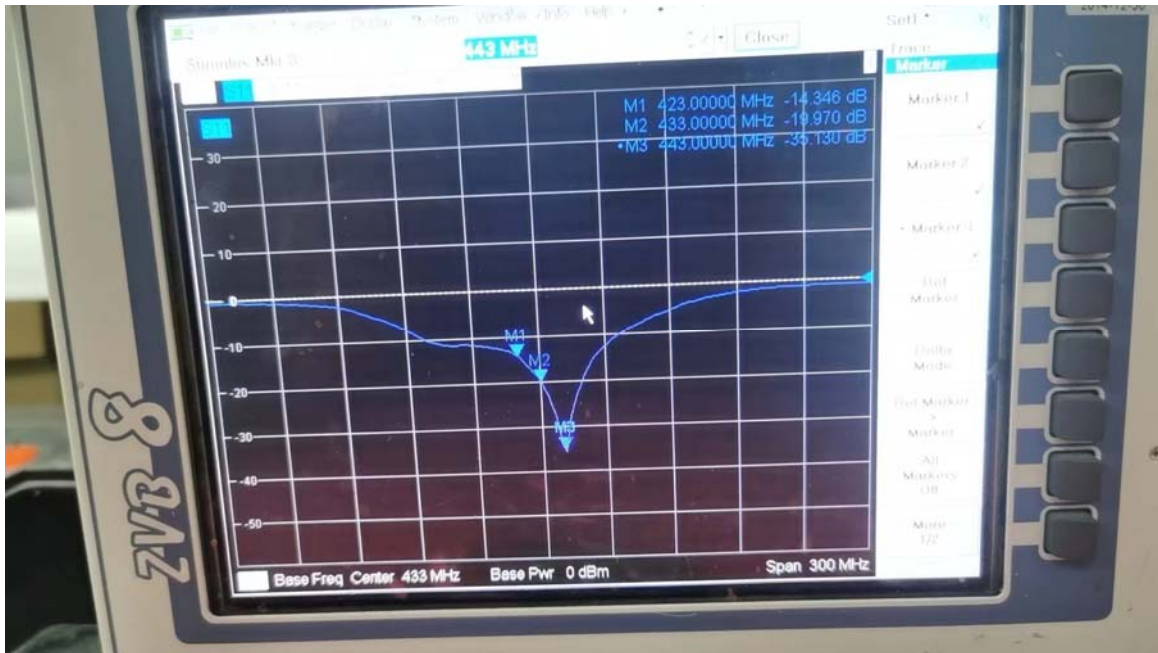


Test data:

Standing wave:



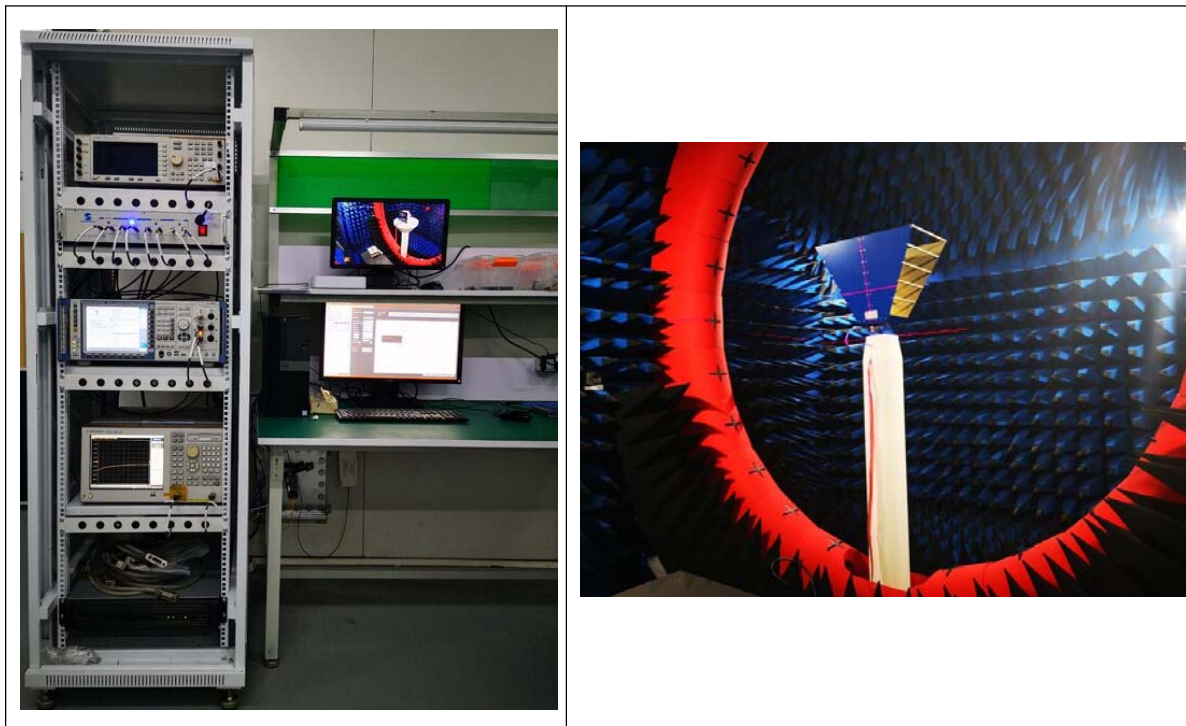
Return loss:



## 2. OTA TEST:

Test equipment: 24 probe spherical microwave dark test chamber

Testing instrument: 5071B, CMW500, E4438C

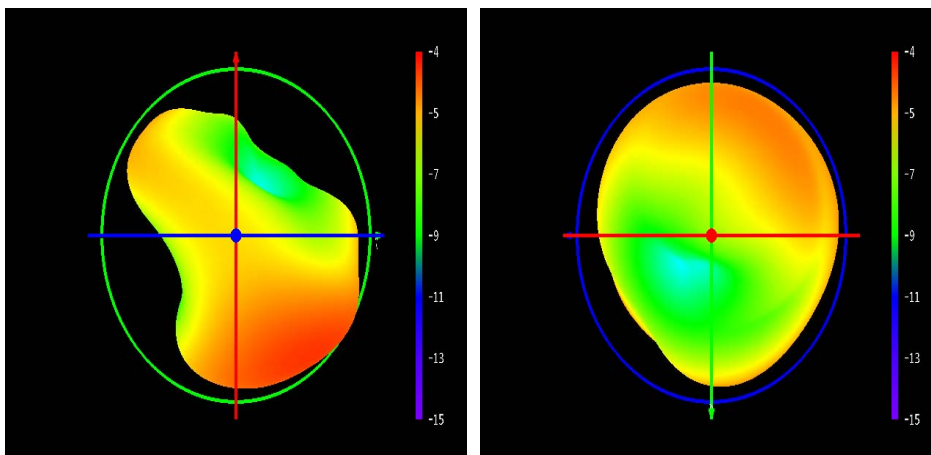


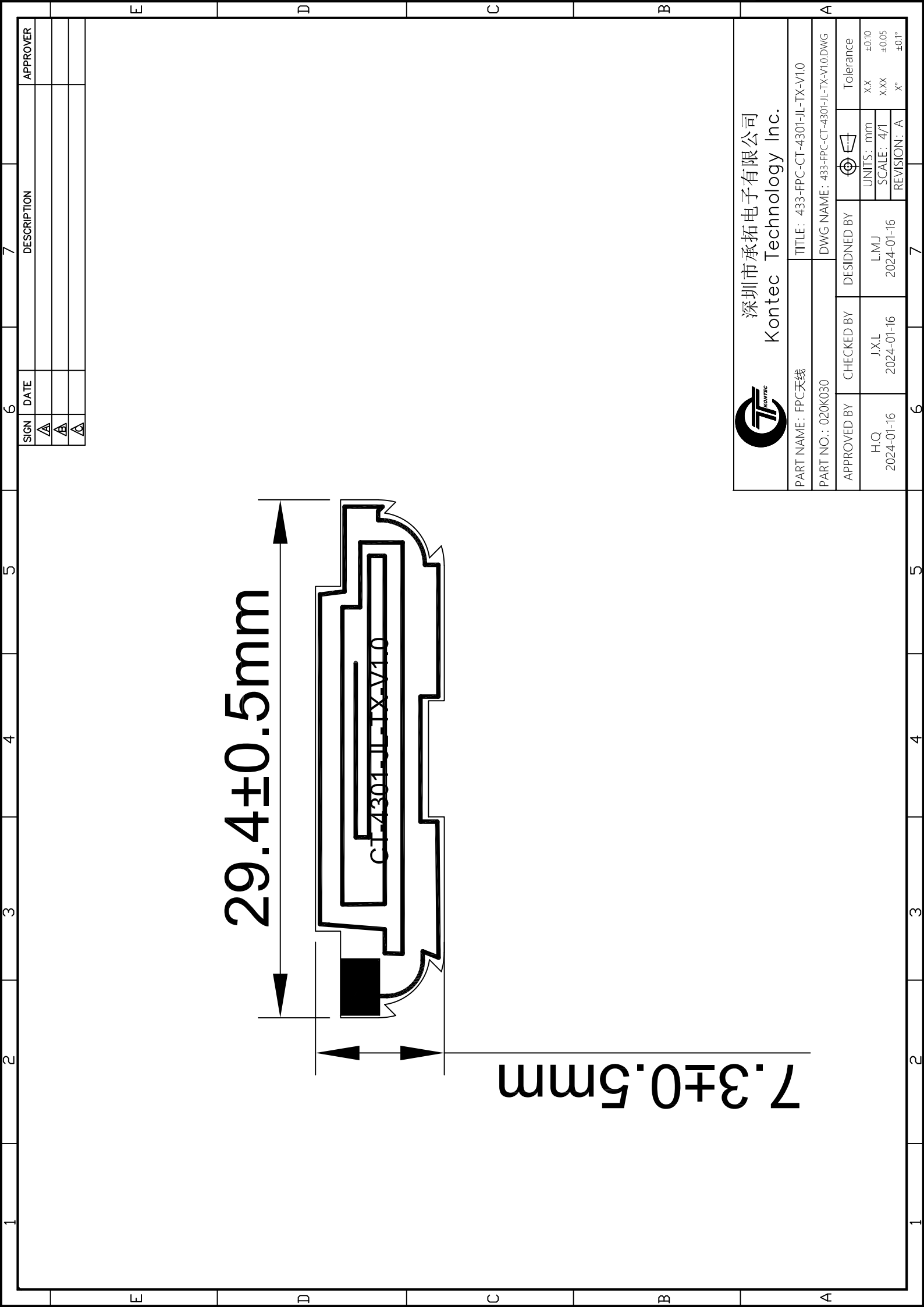


Test data:

Gain&Efficiency&PhaseCenter			
frequency (MHz)	gain (dBi)	efficiency (dB)	efficiency (%)
423	-2.19	-5.91	25.63
424	-1.87	-5.55	27.88
425	-1.93	-5.55	27.88
426	-2.07	-5.62	27.4
427	-2.41	-5.89	25.75
428	-2.89	-6.28	23.53
429	-3.39	-6.72	21.29
430	-3.84	-7.1	19.51
431	-4.17	-7.36	18.38
432	-4.31	-7.46	17.94
433	-4.27	-7.4	18.21
434	-4.06	-7.14	19.3
435	-3.68	-6.73	21.24
436	-3.21	-6.22	23.88
437	-2.77	-5.74	26.68
438	-2.47	-5.43	28.66
439	-2.41	-5.37	29.02
440	-2.64	-5.61	27.49
441	-3.1	-6.08	24.65
442	-3.73	-6.71	21.32
443	-4.47	-7.41	18.14

3D:





29.4±0.5mm

7.3±0.5mm

CT4301-JL-TX-V1.0

SIGN	DATE	DESCRIPTION	APPROVER
△			
△			
△			



深圳市承拓电子有限公司  
Kontec Technology Inc.

PART NAME: FPC天线		TITLE: 433-FPC-CT-4301-JL-TX-V1.0	
PART NO.: 020K030		DWG NAME: 433-FPC-CT-4301-JL-TX-V1.0.DWG	
APPROVED BY	CHECKED BY	DESIGNED BY	Tolerance
H.Q.	J.X.L.	L.M.J.	UNITS: mm
2024-01-16	2024-01-16	2024-01-16	SCALE: 4/1
			REVISION: A
			XX ±0.10
			XXX ±0.05
			X° ±0.1°