



Figure 4. External Chassis Top View.

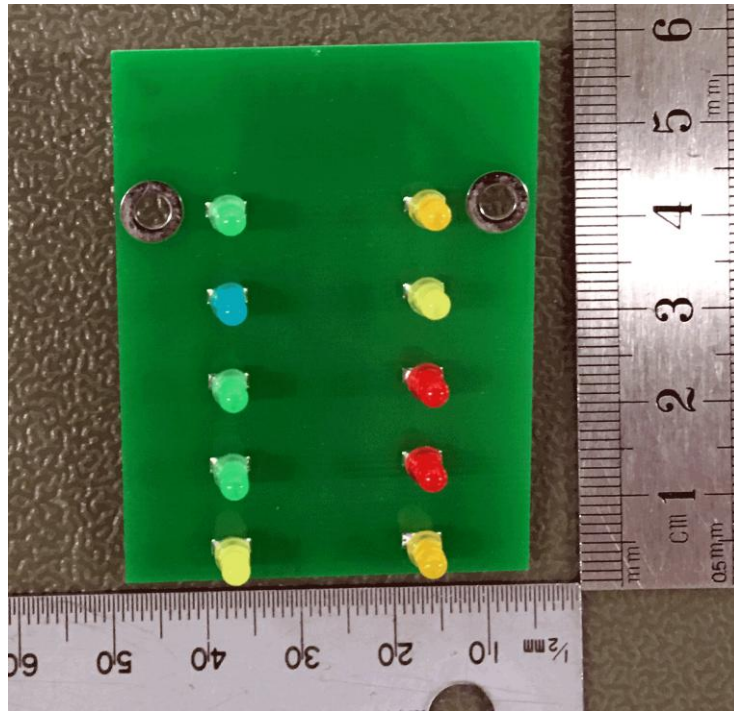


Figure 5. Controller Led PCB Top View.

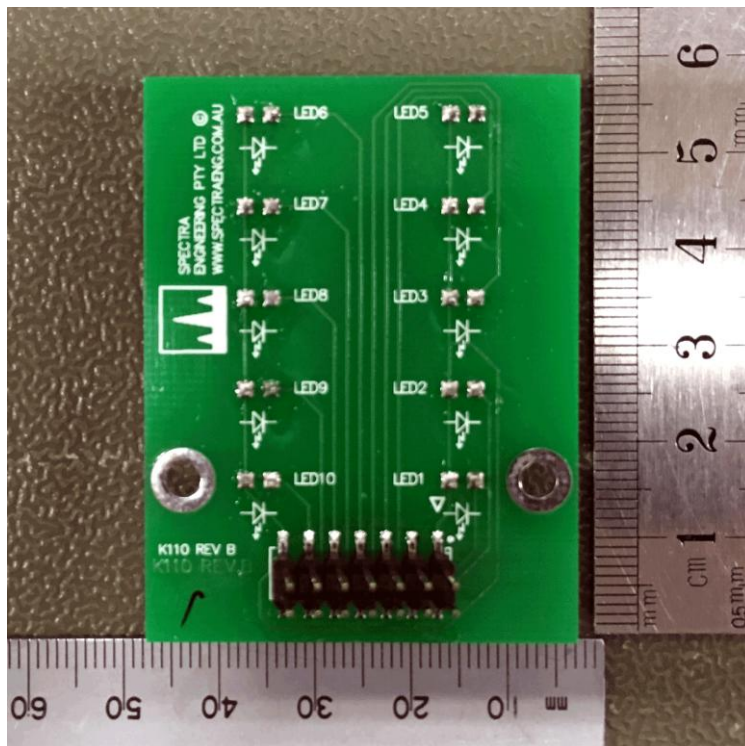


Figure 6. Controller Led PCB Bottom View.

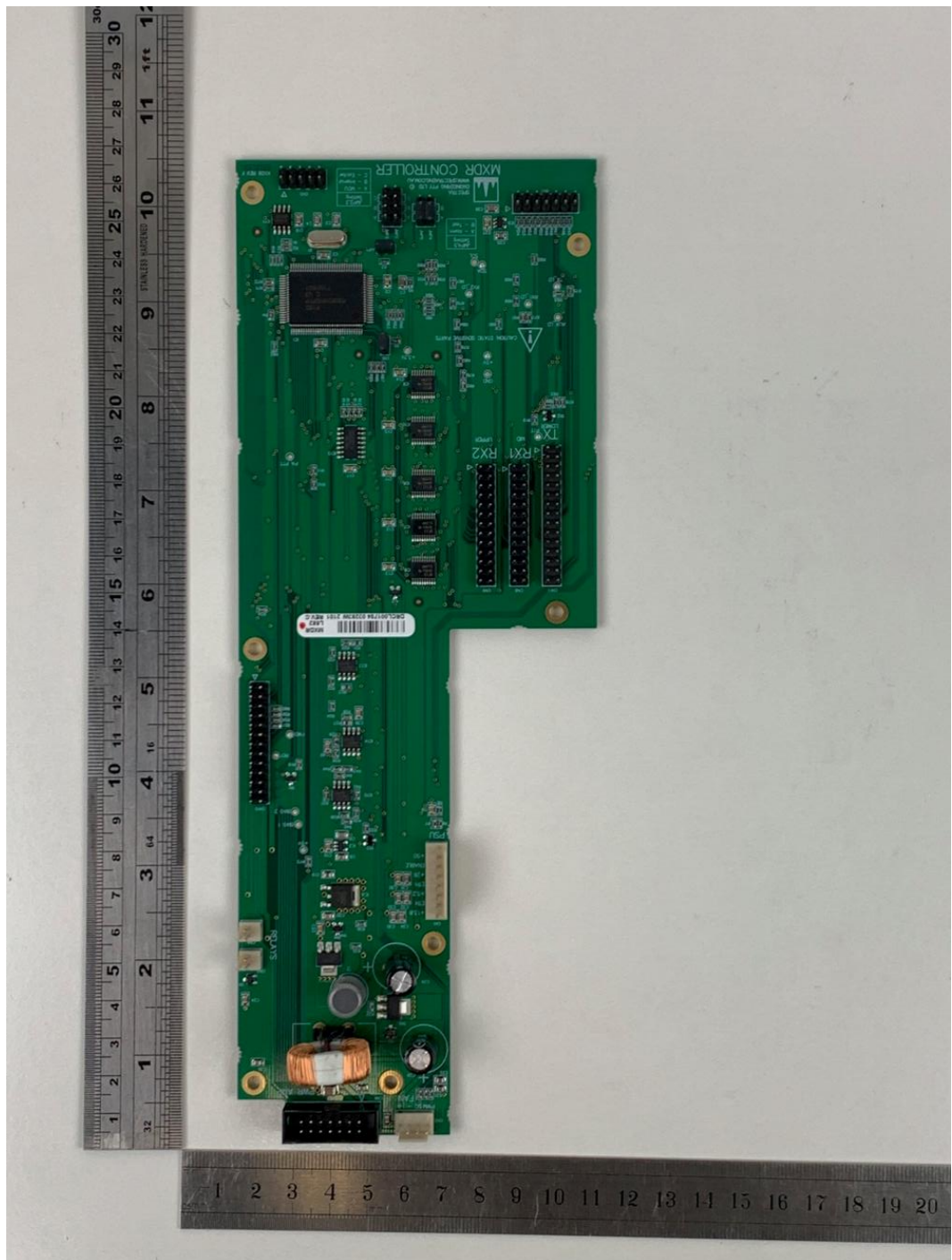


Figure 7. Controller PCB Top View.

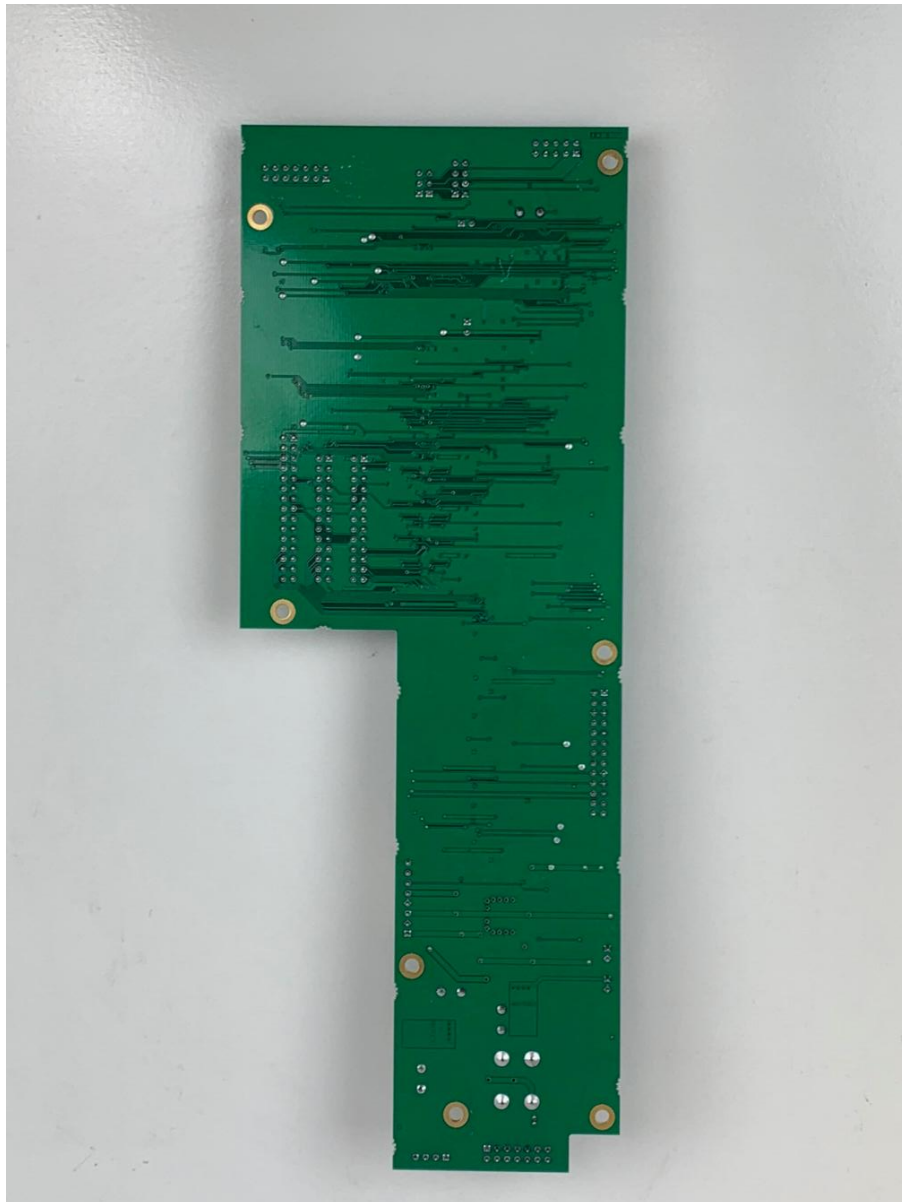


Figure 8. Controller PCB Bottom View.

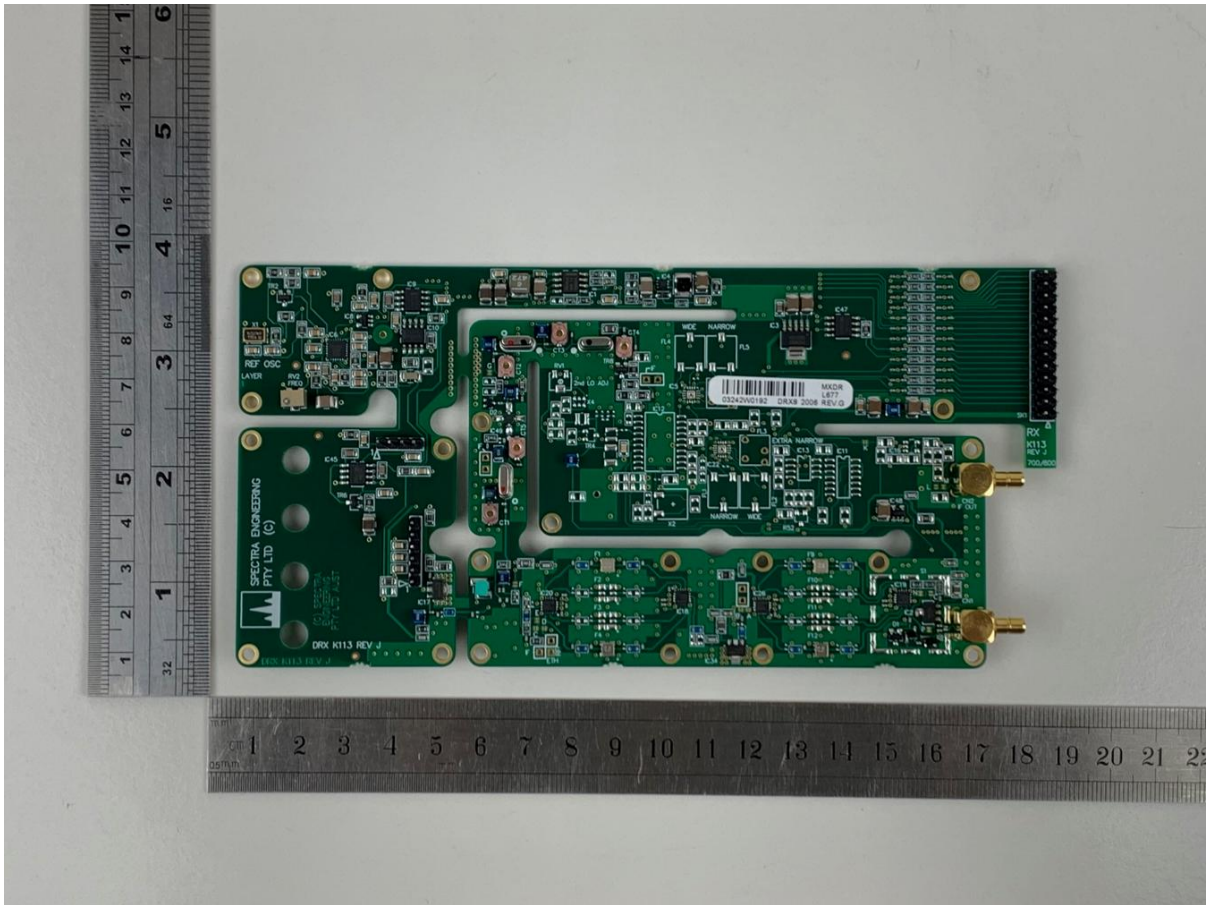


Figure 9. Receiver PCB Top View.

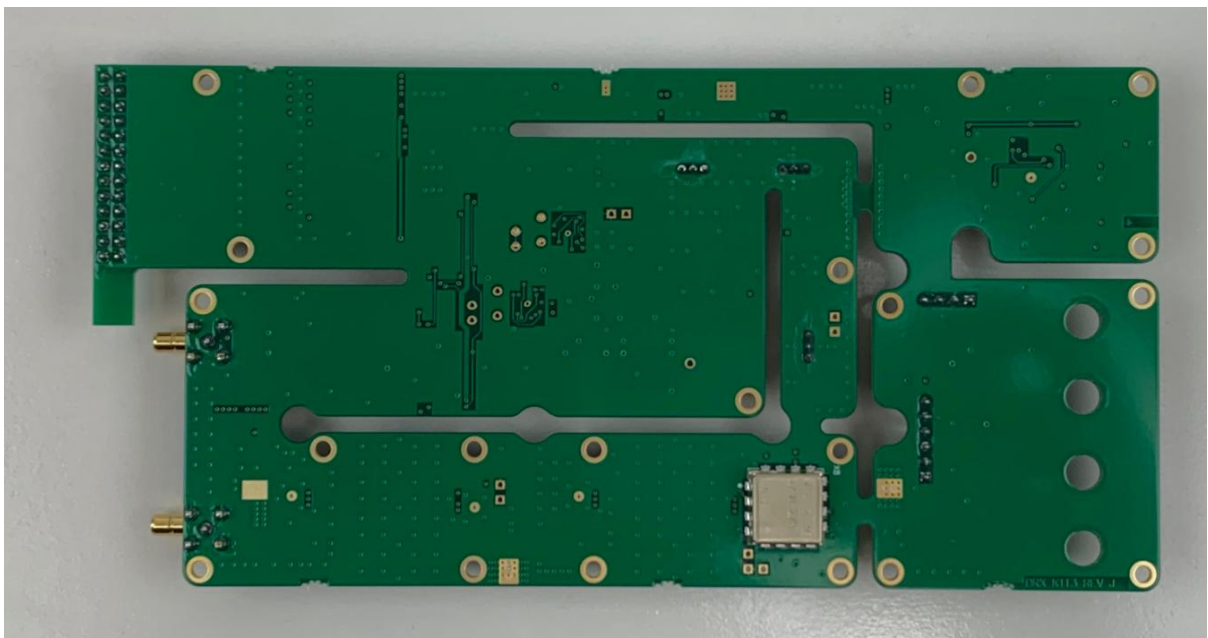


Figure 10. Receiver PCB Bottom View.

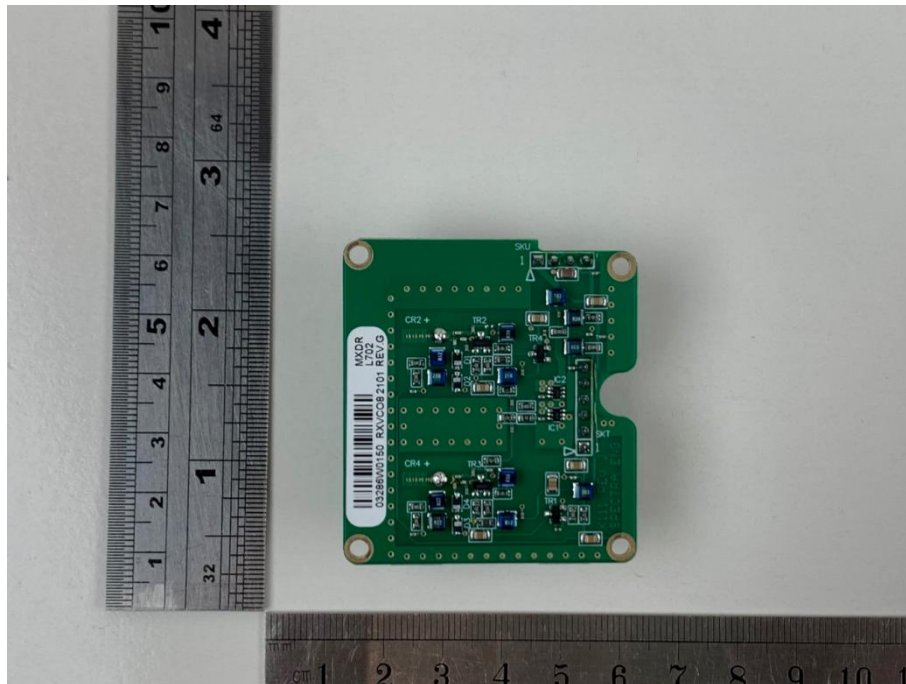


Figure 11. Receiver VCO PCB Top View.

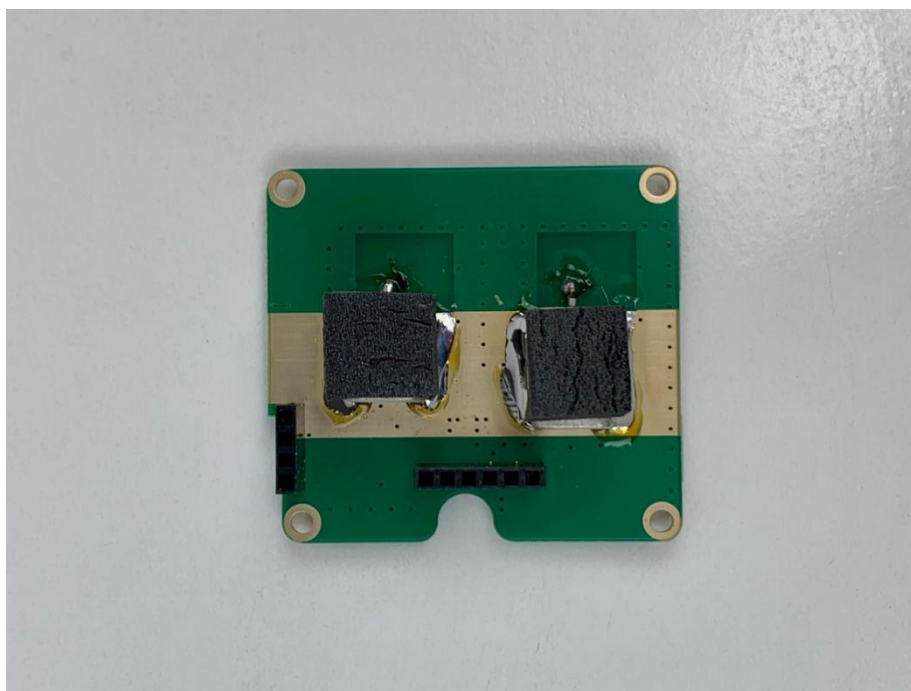


Figure 12. Receiver VCO PCB Bottom View.

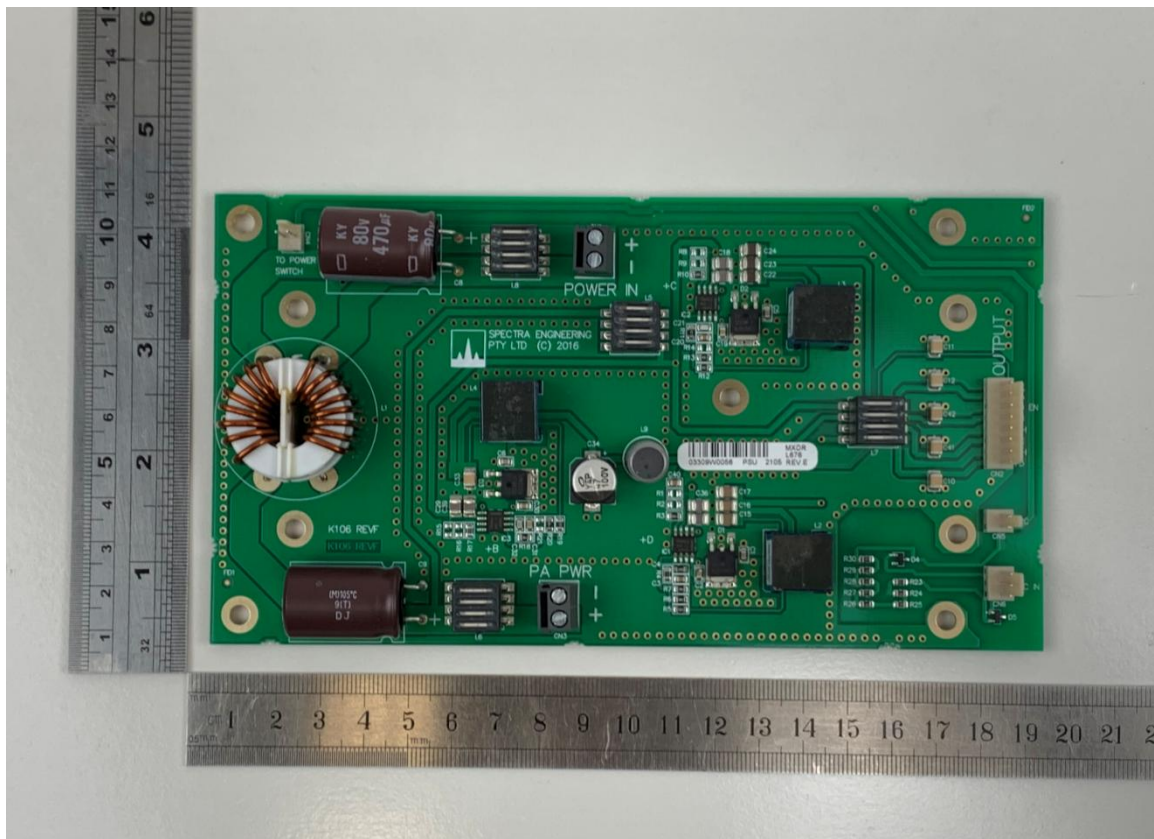


Figure 13. PSU PCB Top View.

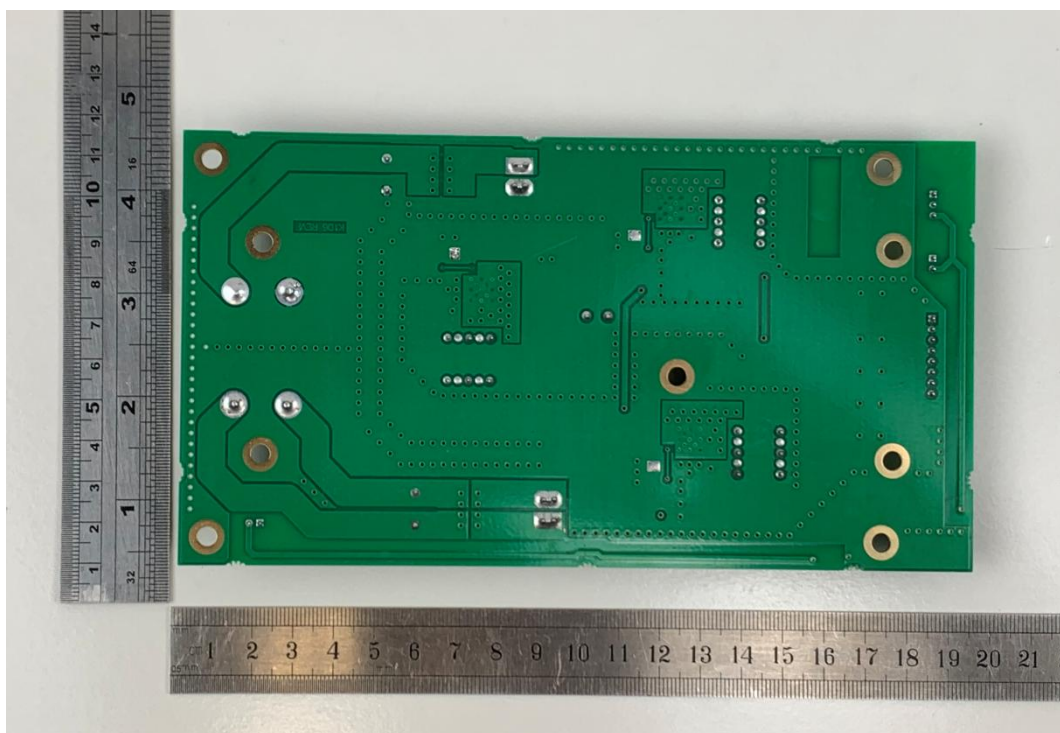


Figure 14. PSU PCB Bottom View.

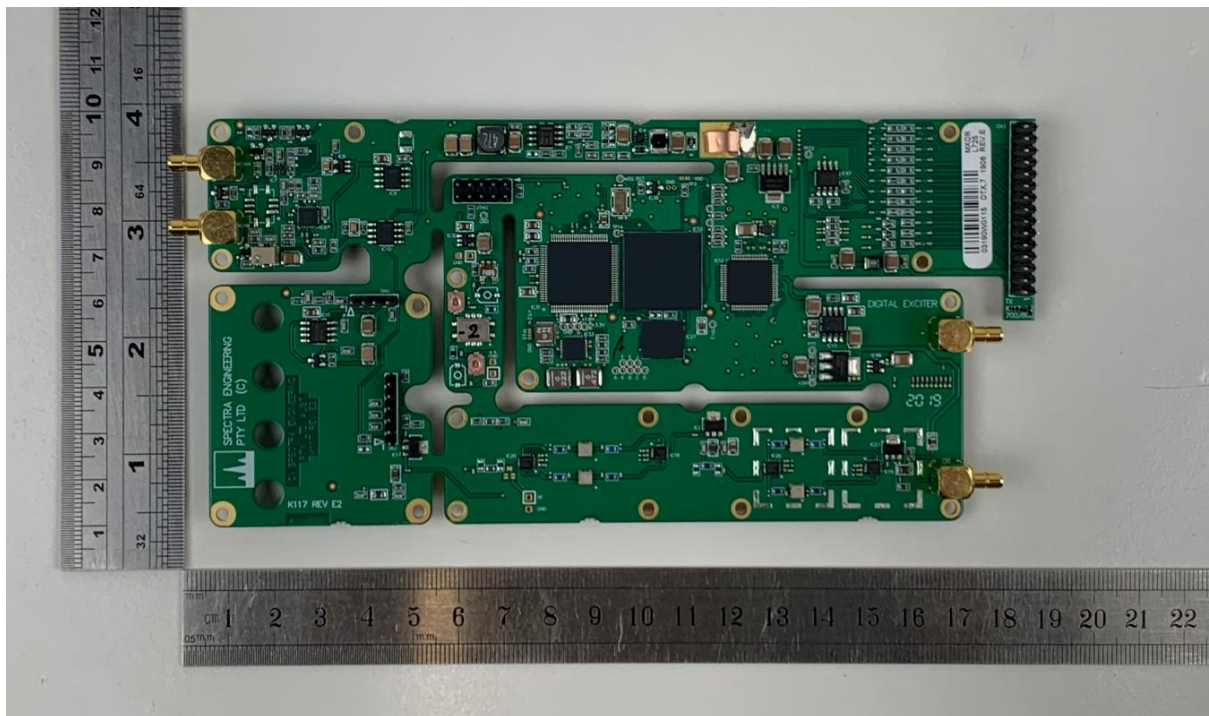


Figure 15. Exciter PCB TOP View.

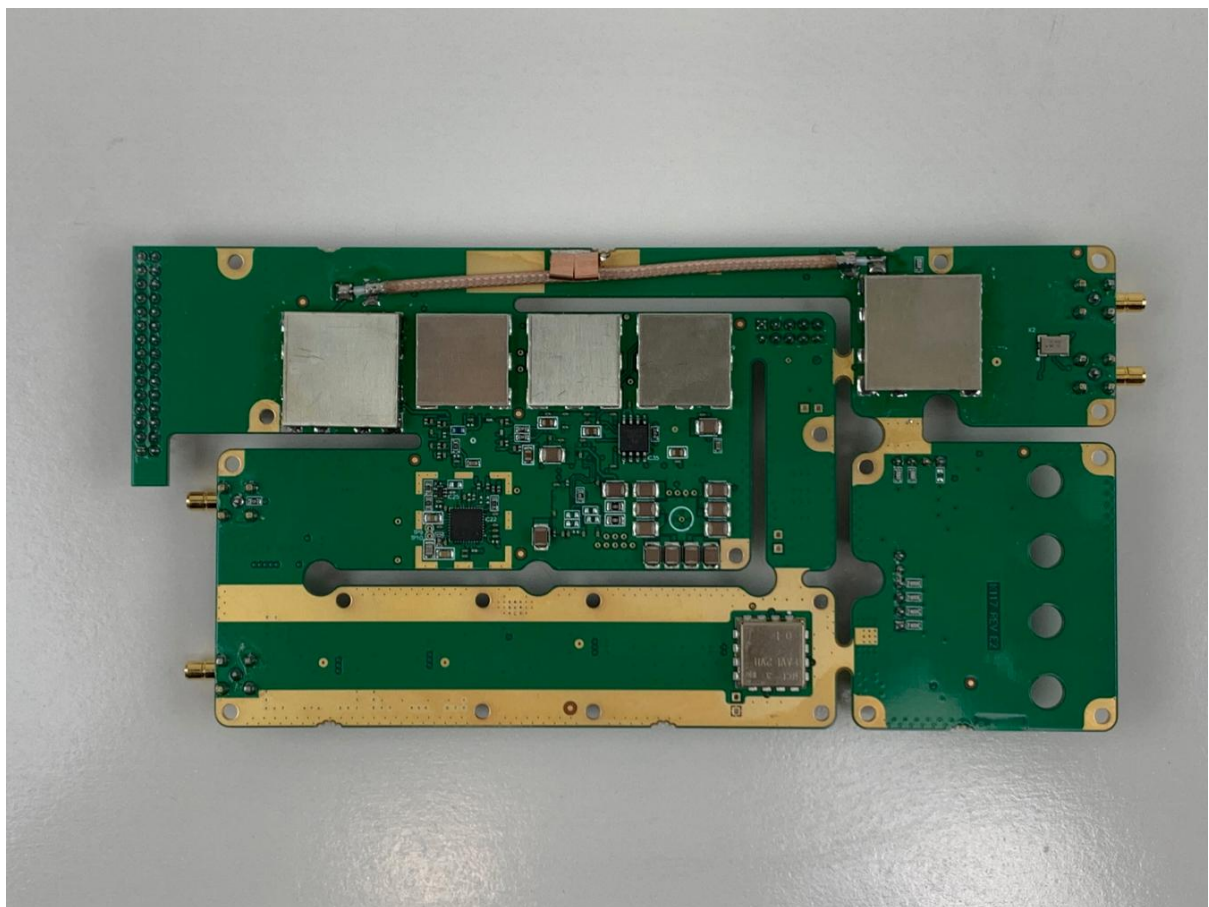


Figure 16. Exciter PCB Bottom View -with Shields.

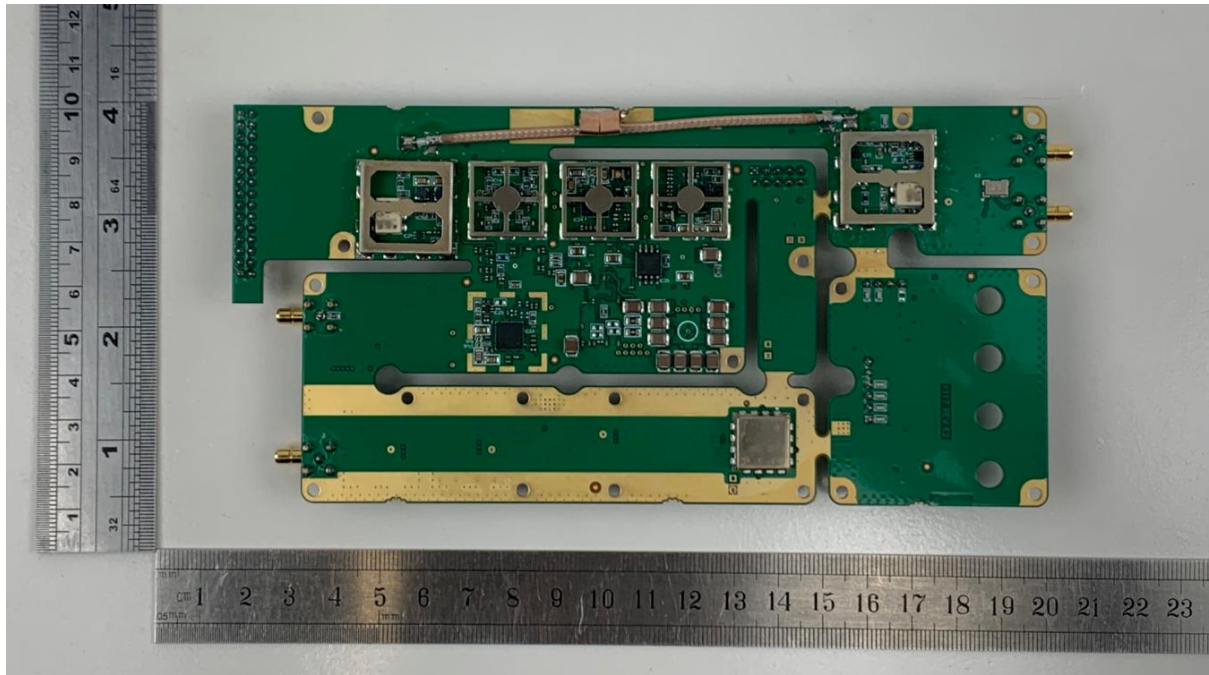


Figure 17. Exciter PCB Bottom View- No shield covers.

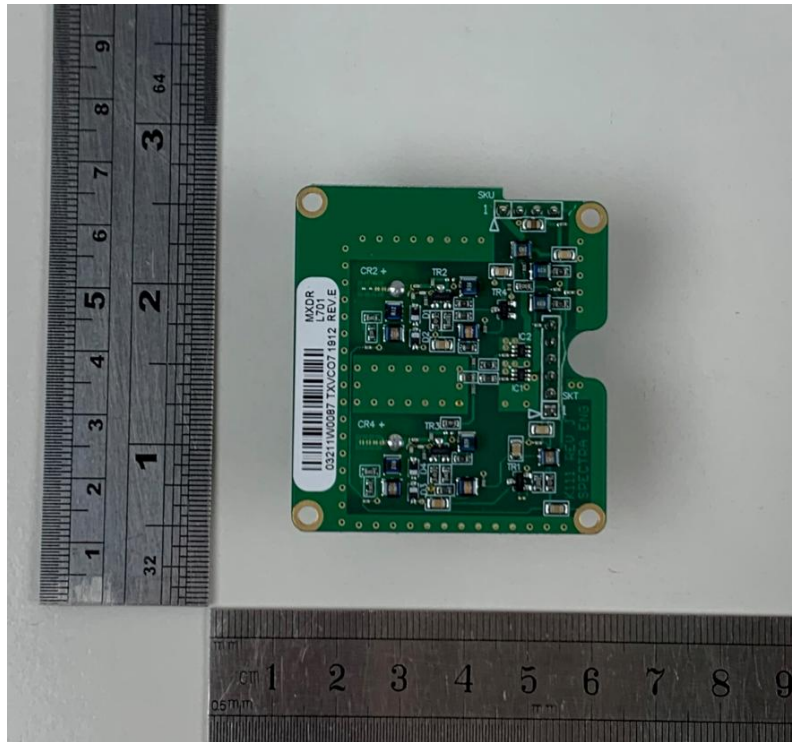


Figure 18. Exciter VCO PCB Top View.

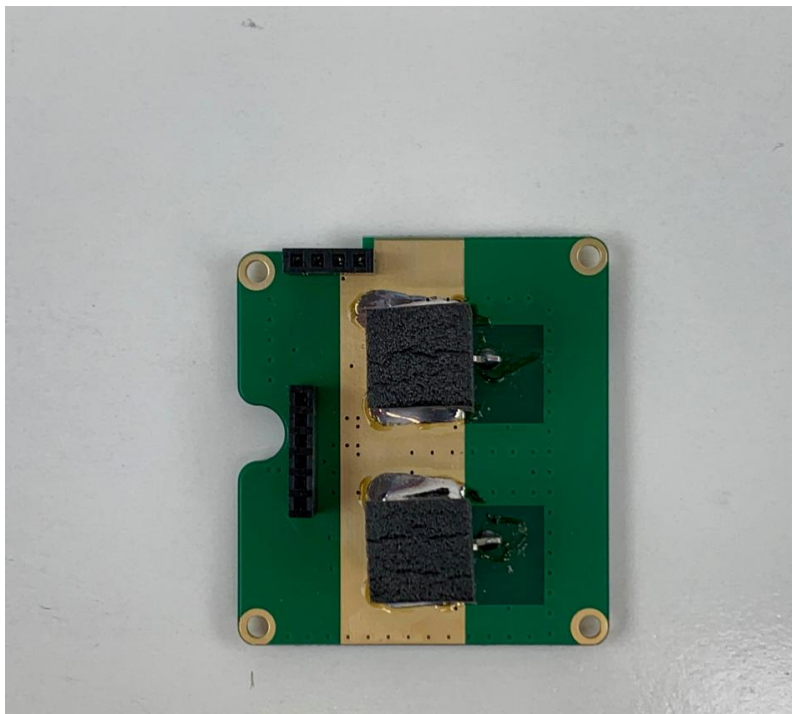


Figure 19. Exciter VCO PCB Bottom View.



Figure 20. OKRMXDR4B PA PCB Top View.

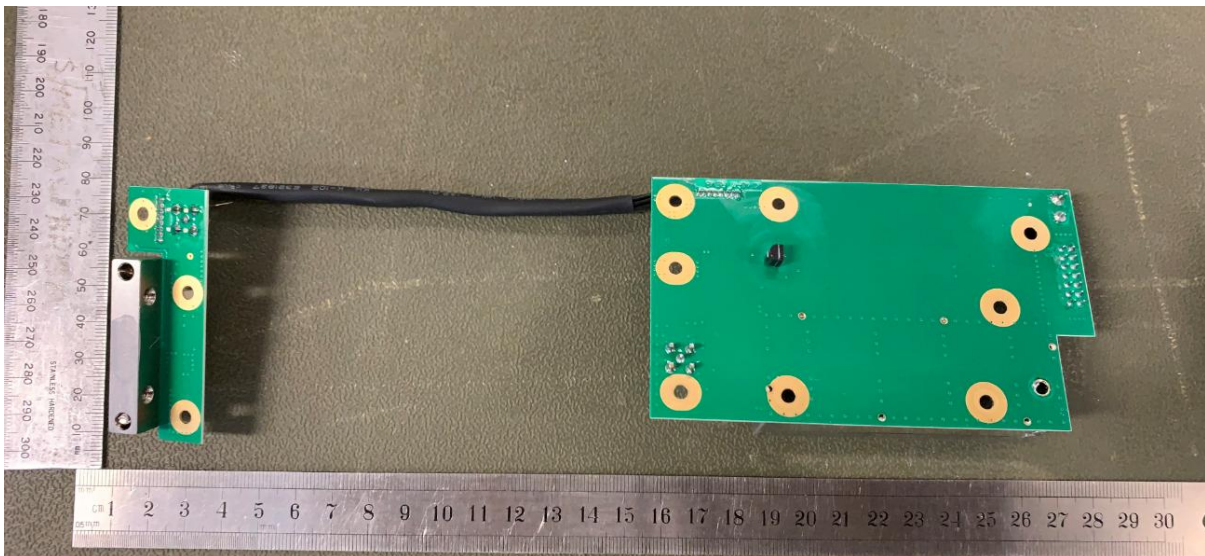


Figure 21. OKRMXDR4B PA PCB Bottom View.

Note# The output RF transistor and input /output PCB's are directly soldered to a copper pallet

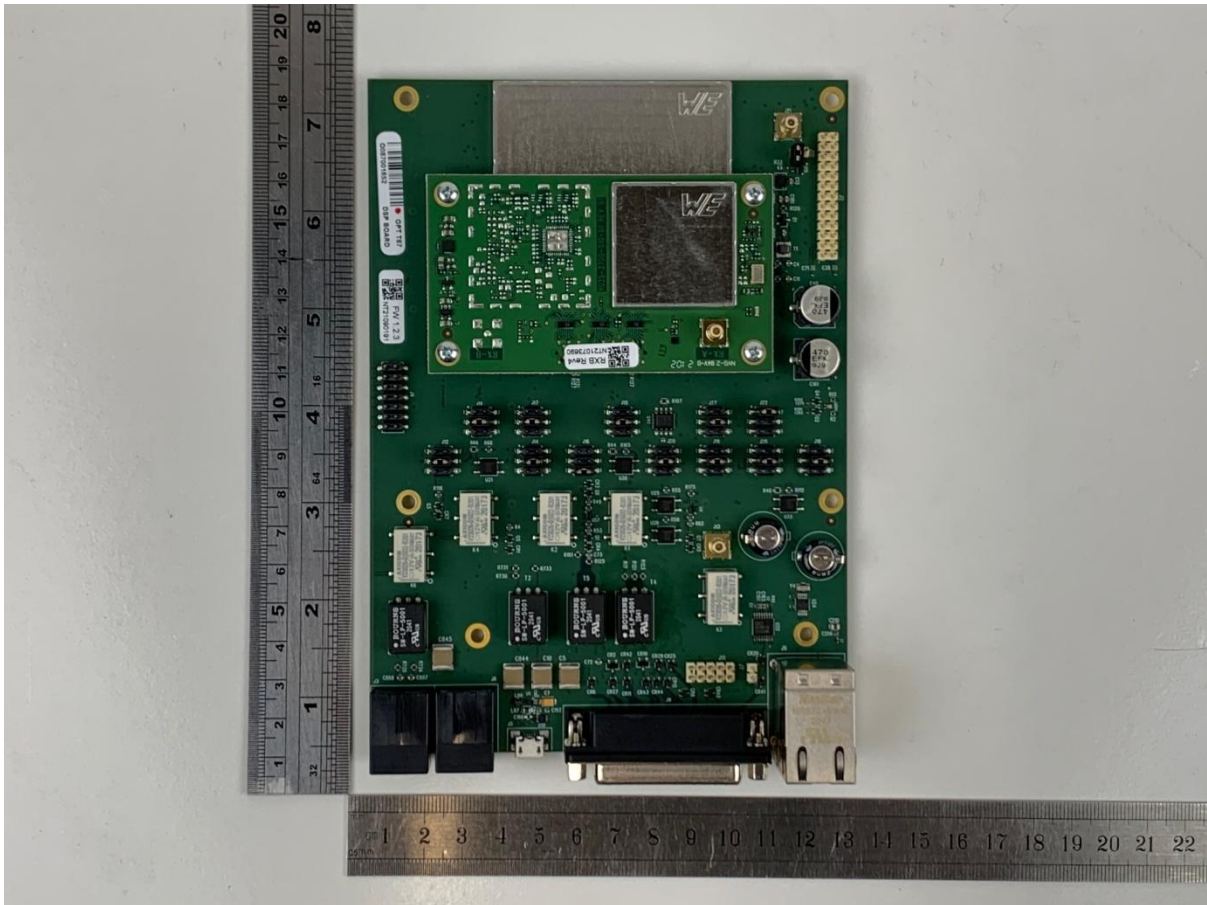


Figure 22. DSP Logic Board Top View.



Figure 23. DSP Logic Board Bottom View.

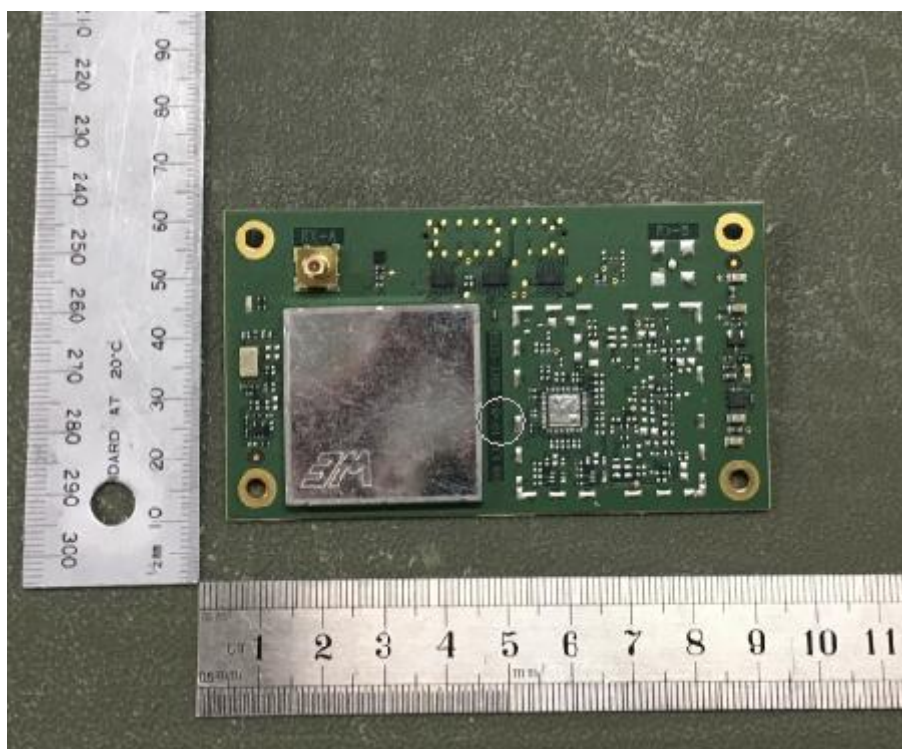


Figure 24. DSP RX Logic Top View.

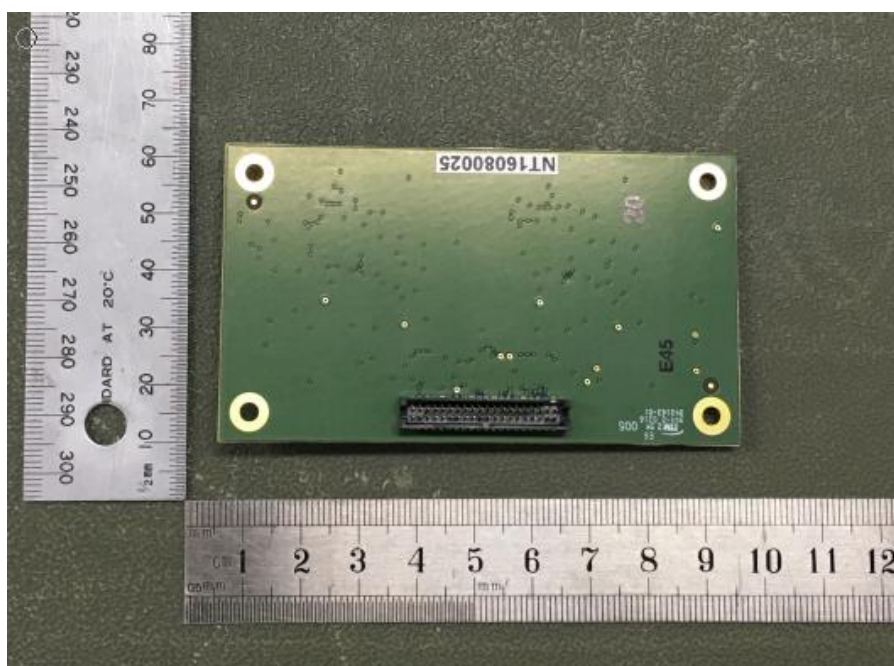


Figure 25. DSP RX logic Bottom View.

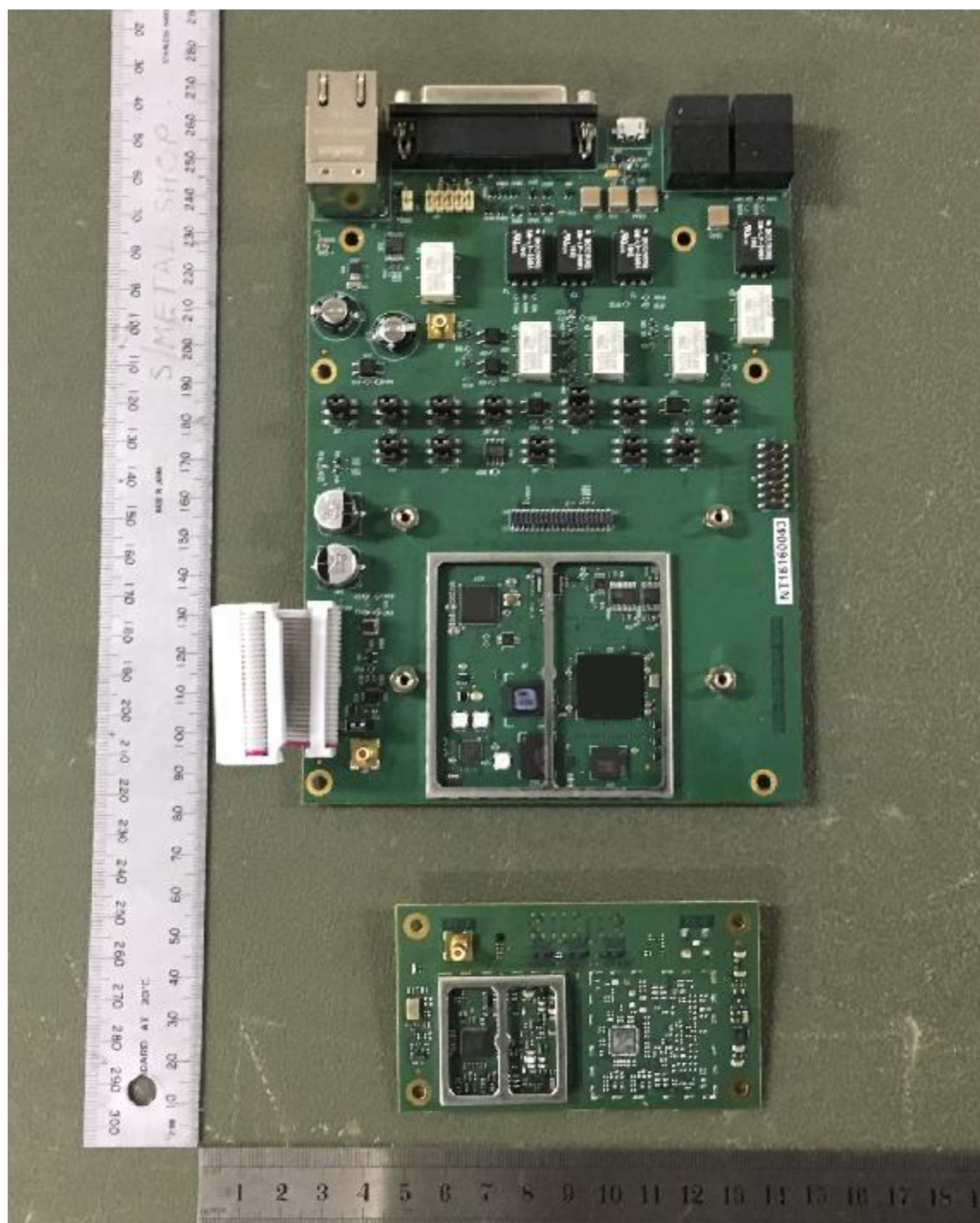


Figure 26. DSP Logic Board- Without Shields.