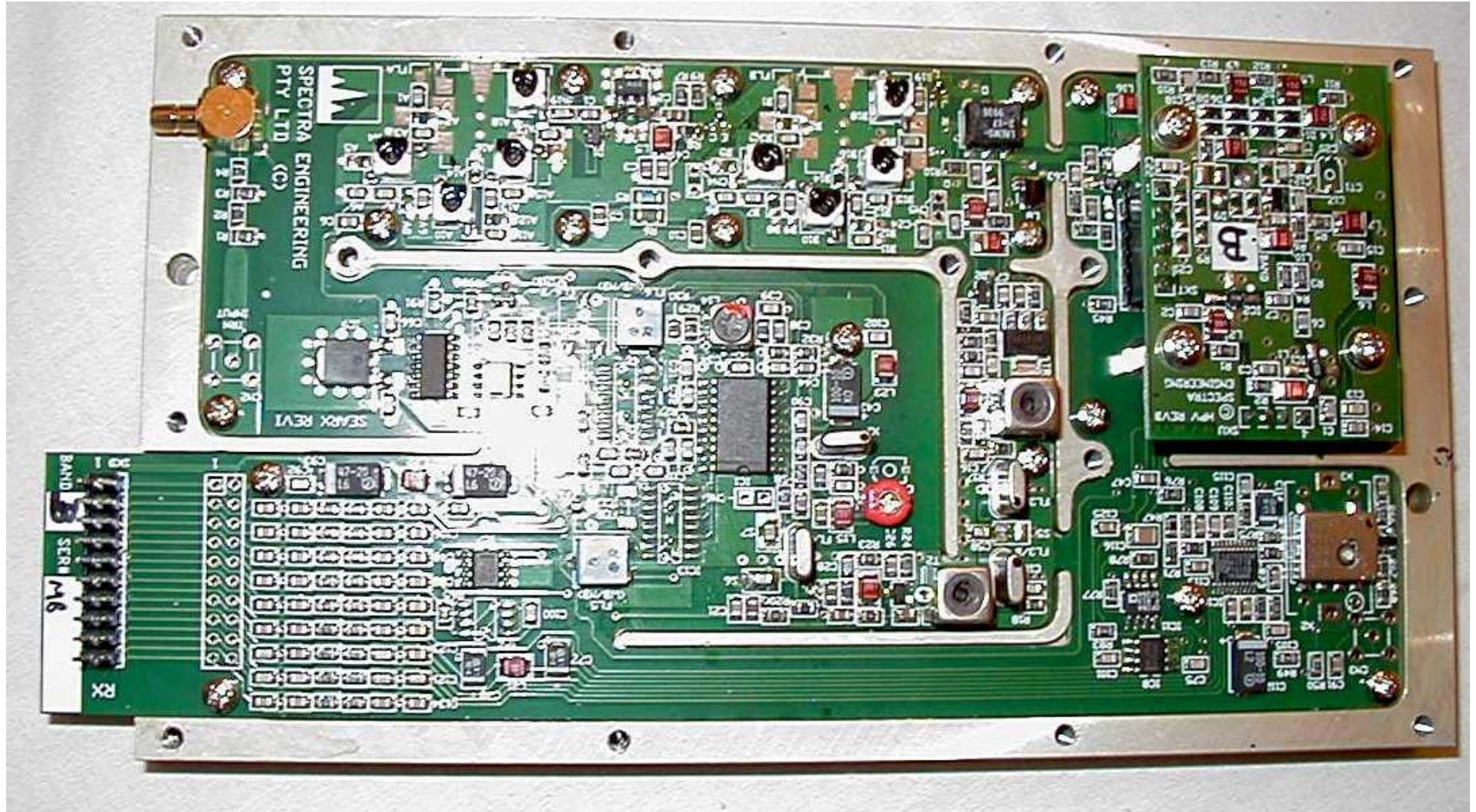
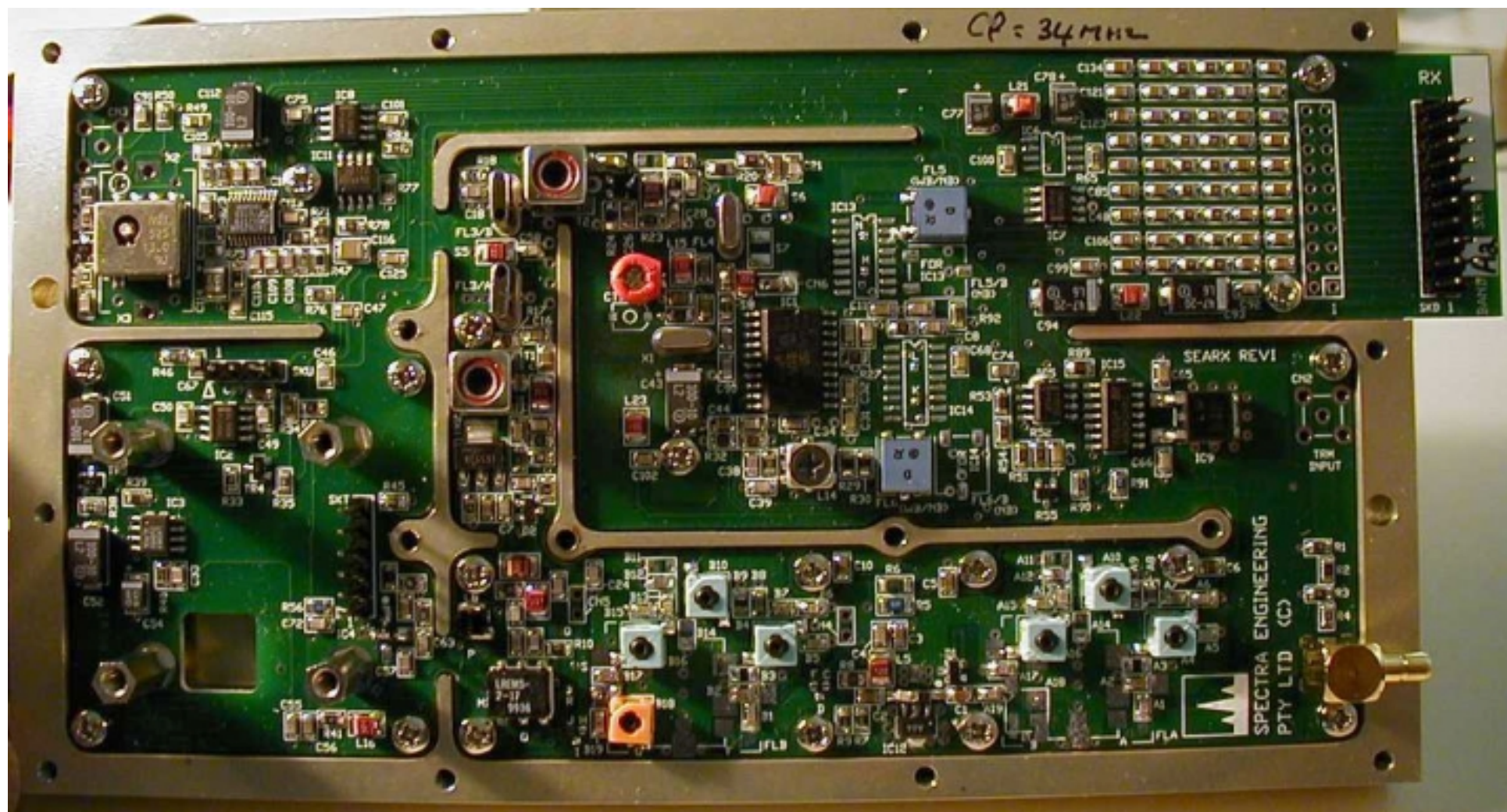


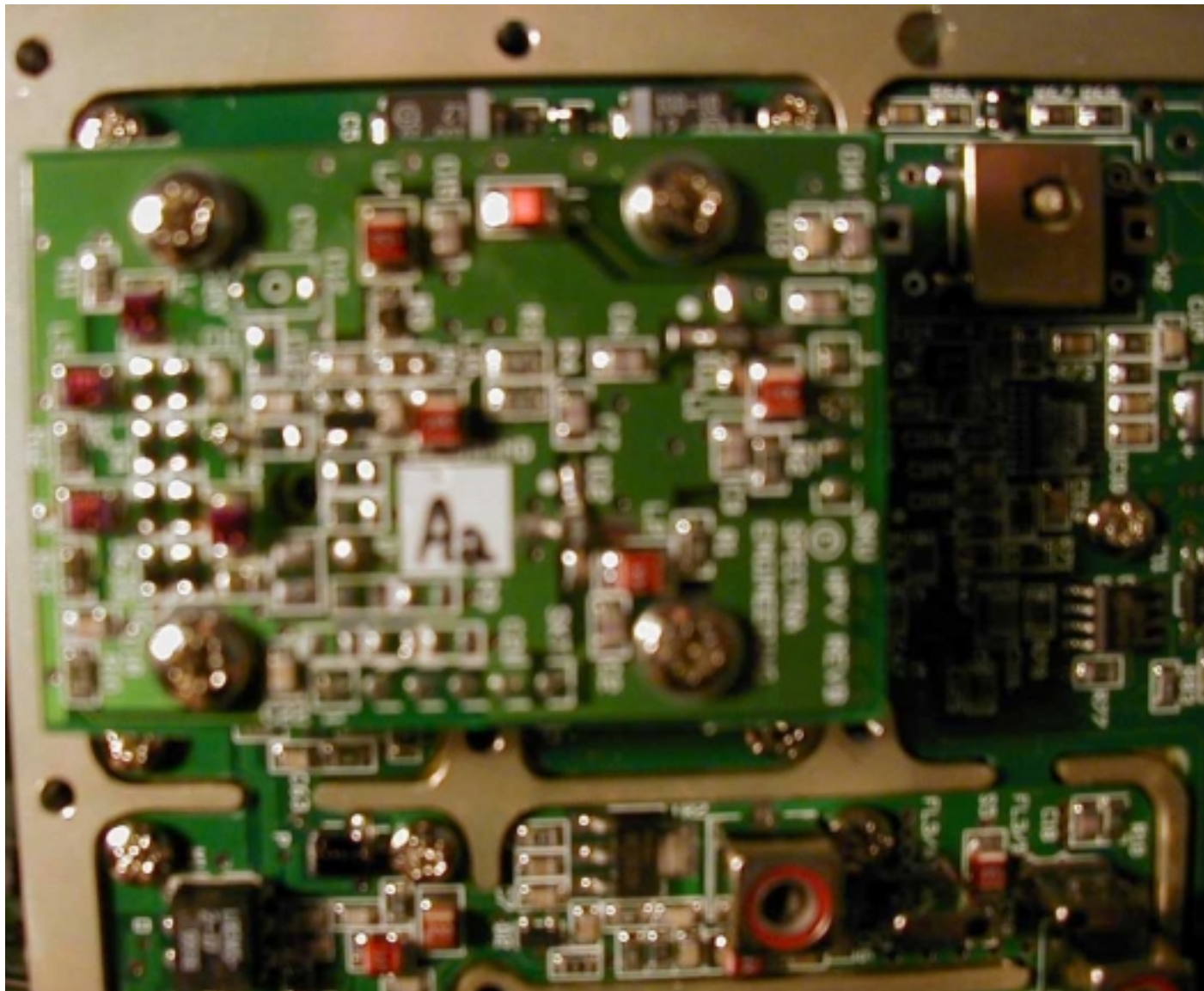
B Frequency Range Receiver



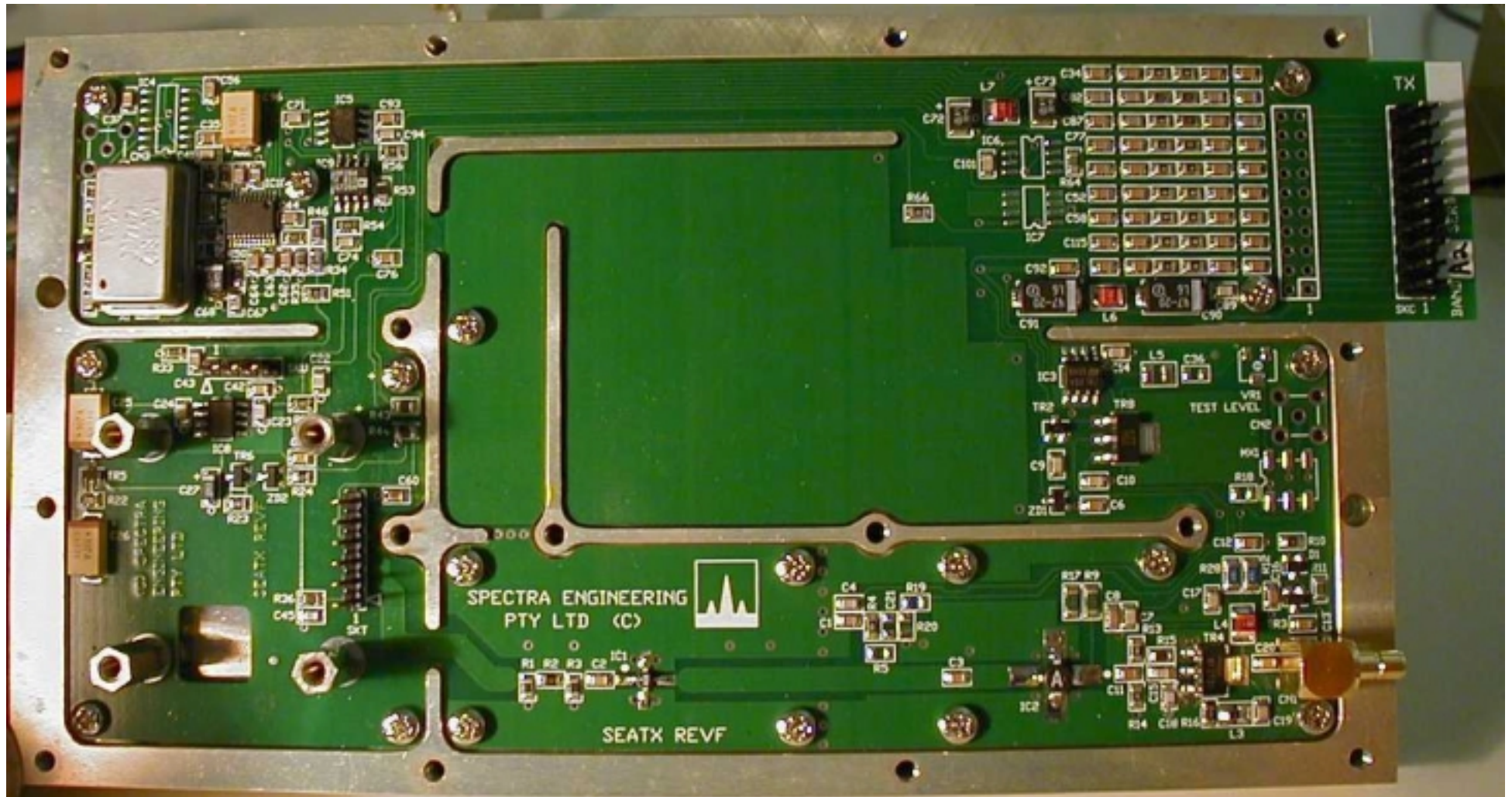
A2 Frequency Range Receiver w/ VCO removed



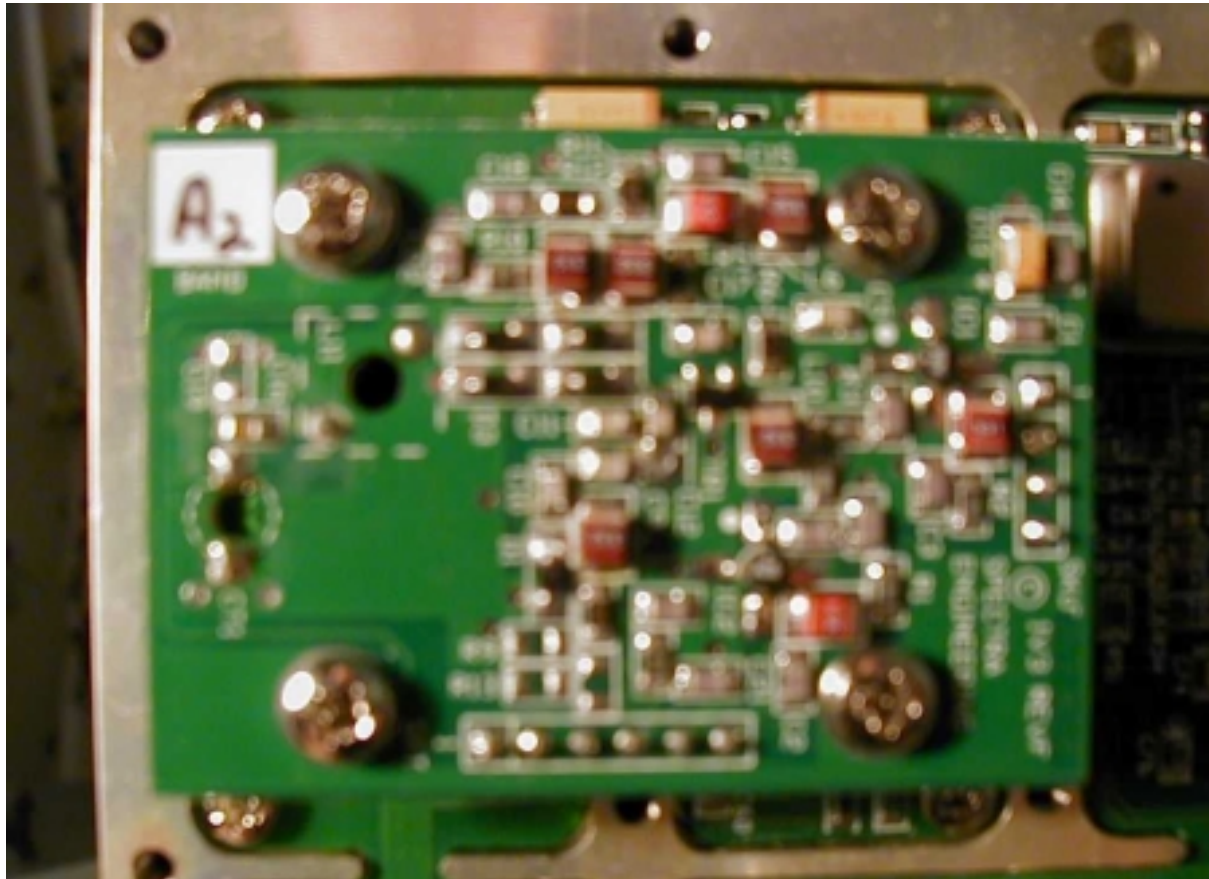
Receiver VCO installed



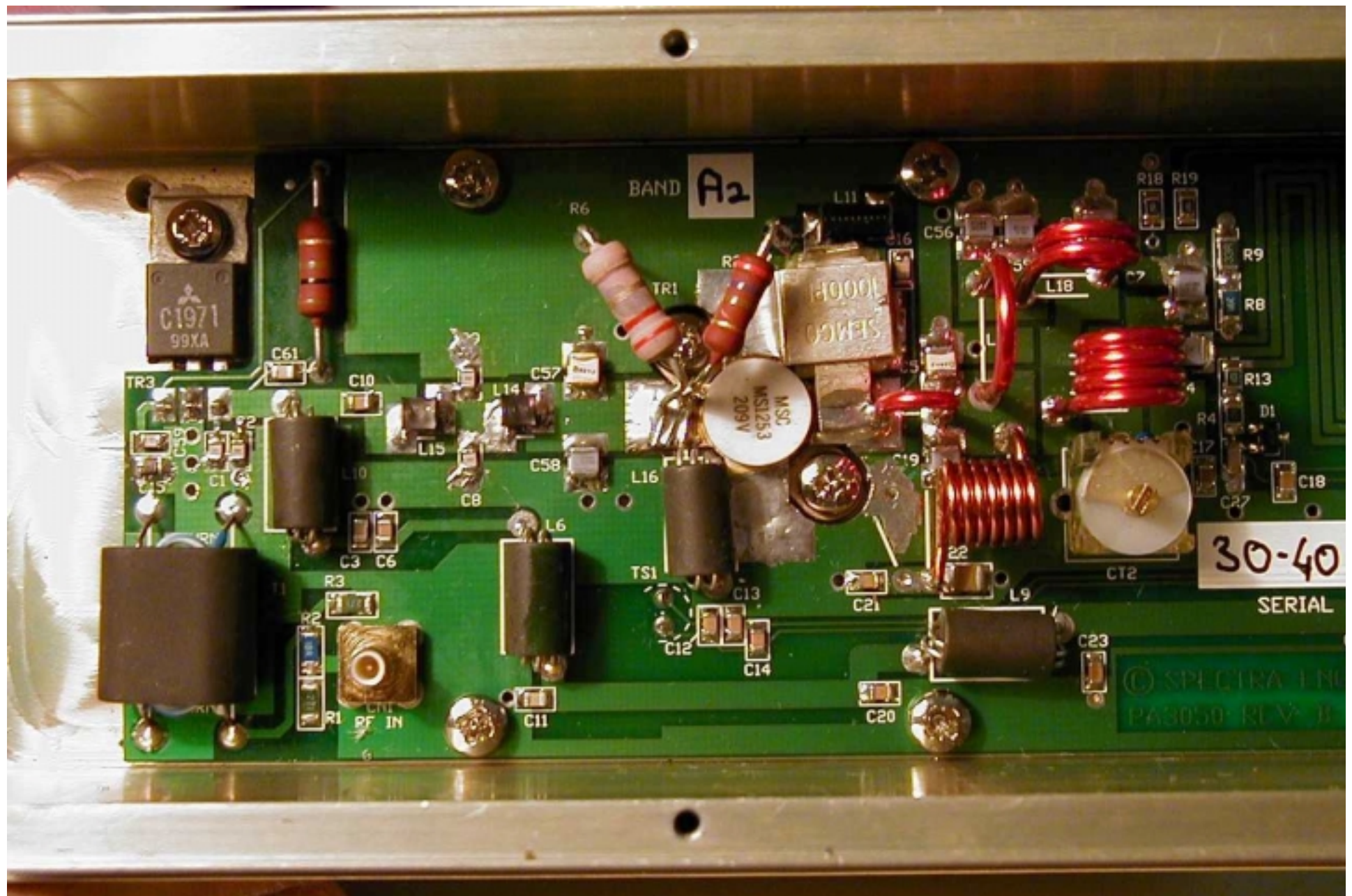
A2 Frequency Range Exciter w/ VCO removed



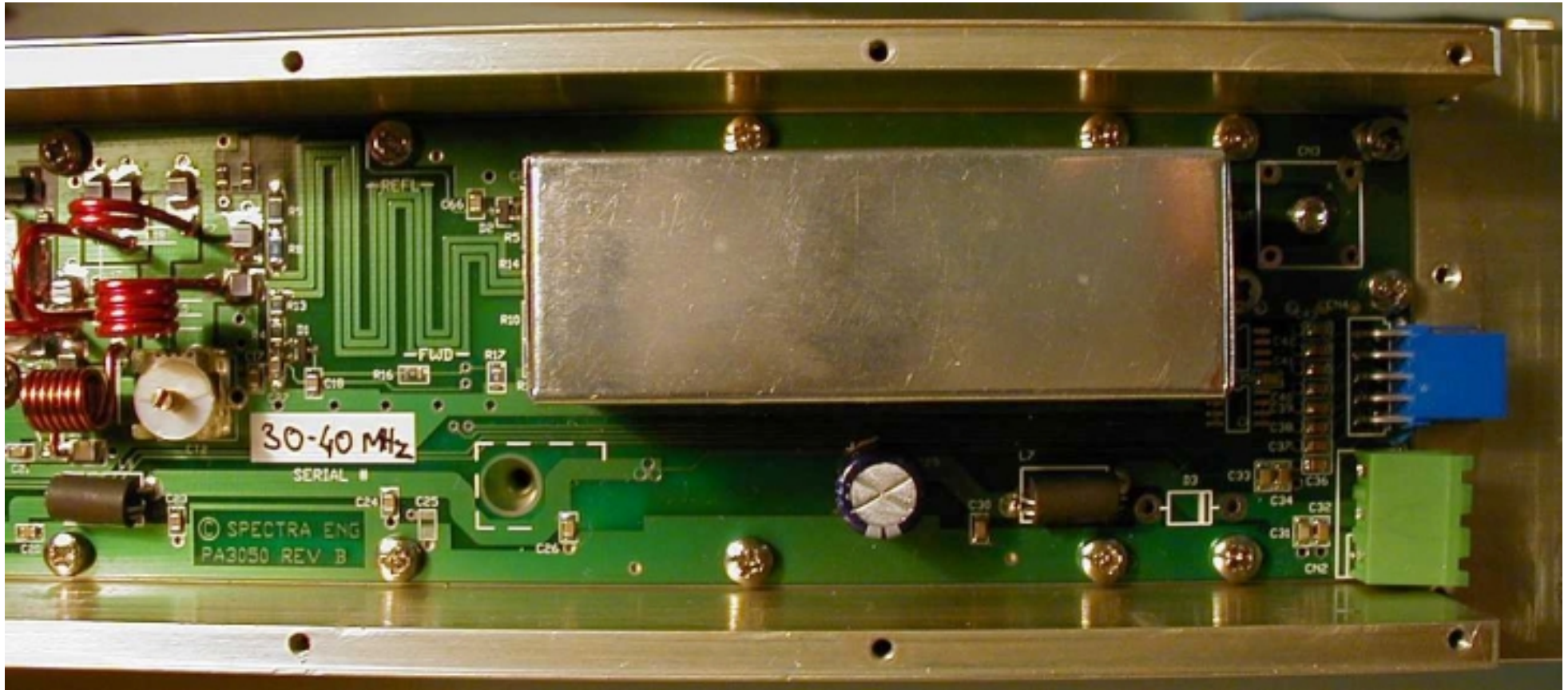
Tx VCO

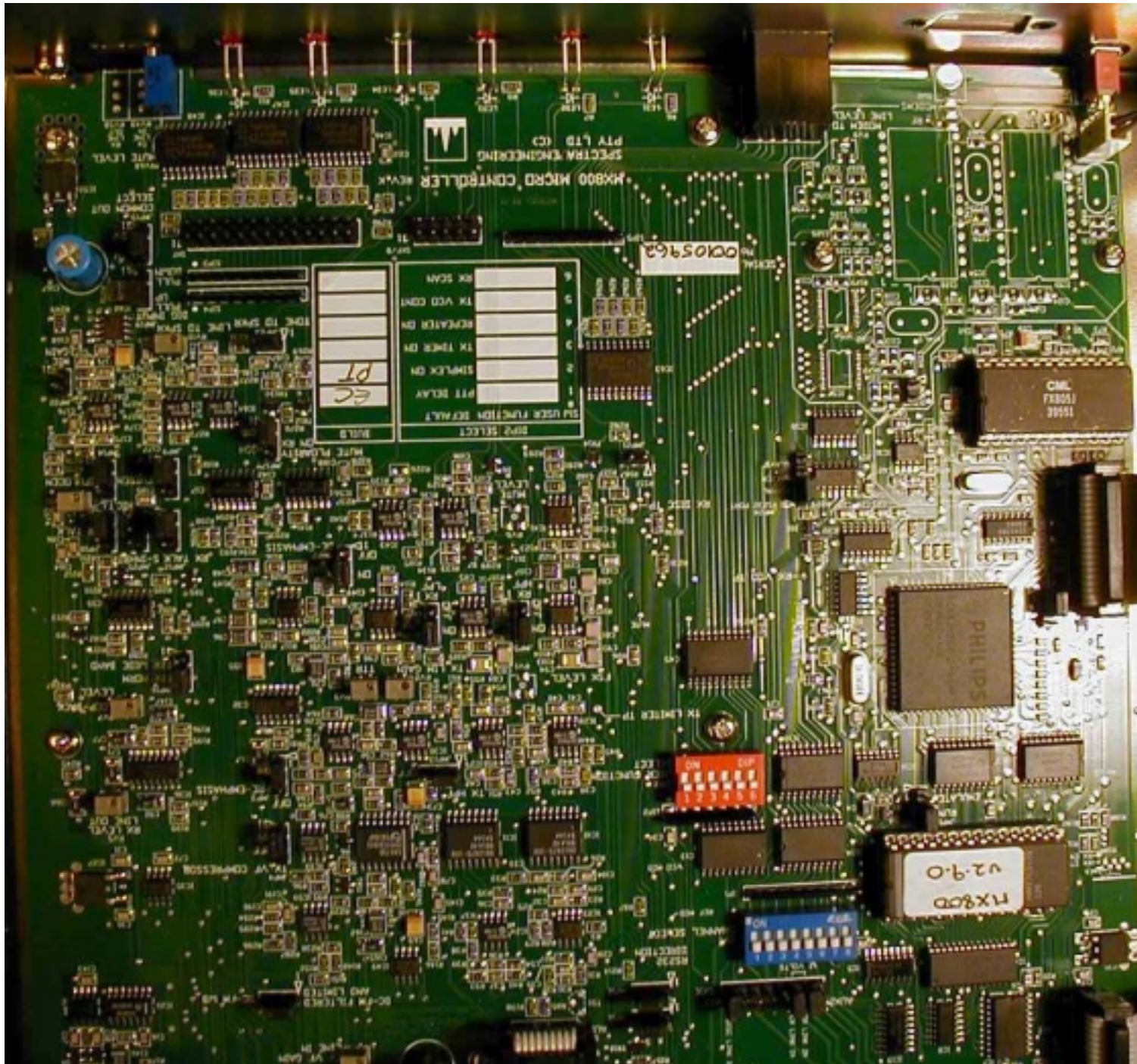


A2 Frequency Range Power Amplifier (Left Side)



A2 Frequency Range Power Amplifier (Right Side) with Low Pass Filter Shelding





Logic Board