

hp

MKR 29.750 msec

REF 97.0 dB $\mu$ V

AT 10 dB

-.09 dB

PEAK

LOG

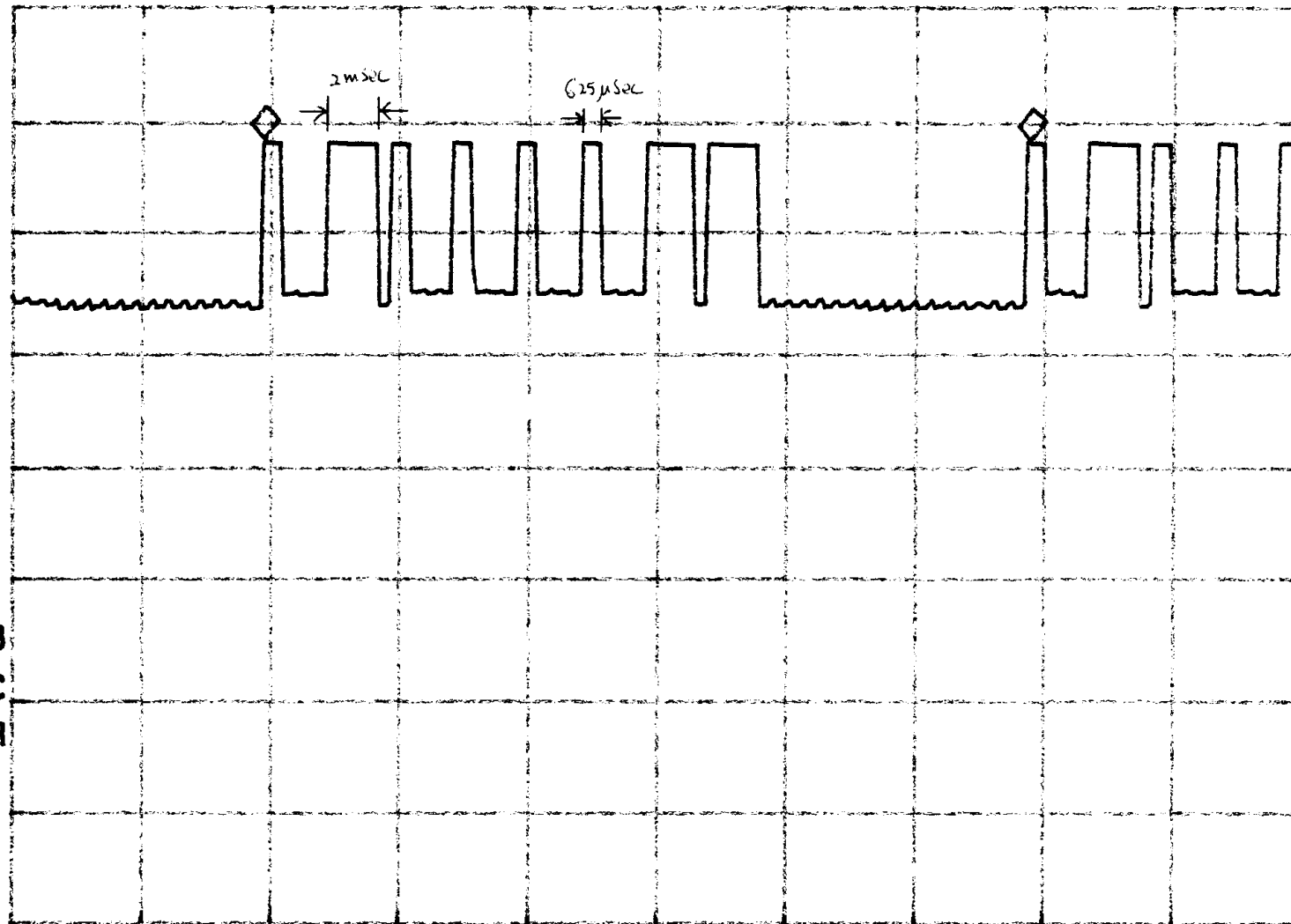
10

dB/

VA SB

SC FC

CORR



CENTER 49.861 MHz

#RES BW 3.0 MHz

#VBW 3 MHz

SPAN 0 Hz

#SWP 50.0 msec