

hp

REF 87.0 dB μ V

AT 10 dB

MKR 16.0 KHz

-26.40 dB

PEAK

LOG

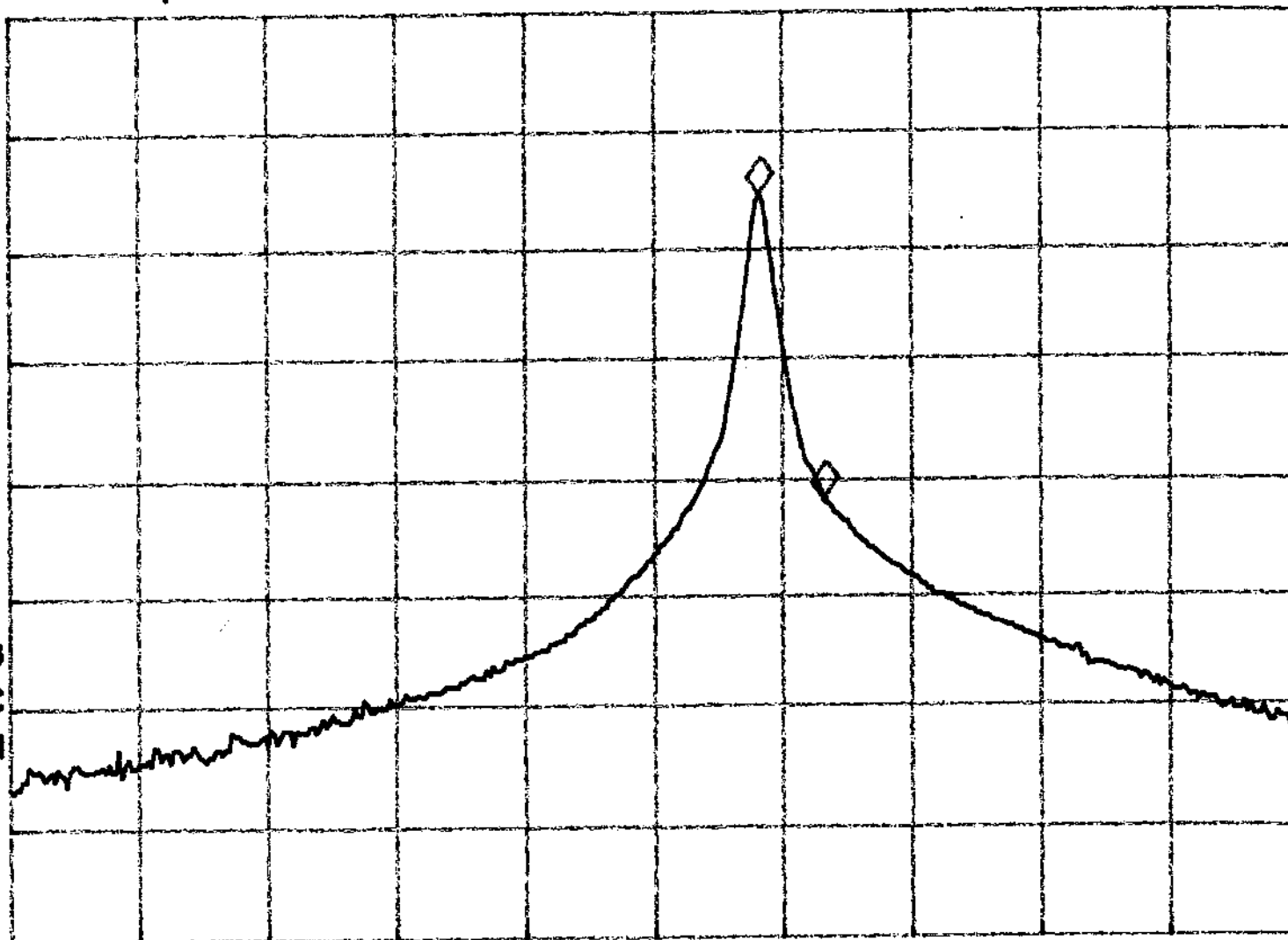
10

dB/

VA SB

SC FC

CORR



START 26.9600 MHz

#RES BW 3.0 KHz

#VBW 10 KHz

STOP 27.2800 MHz

#SWP 1.00 sec