

hp

REF 97.0 dB μ V

AT 10 dB

MKR 133.6 kHz

-44.51 dB

PEAK

LOG

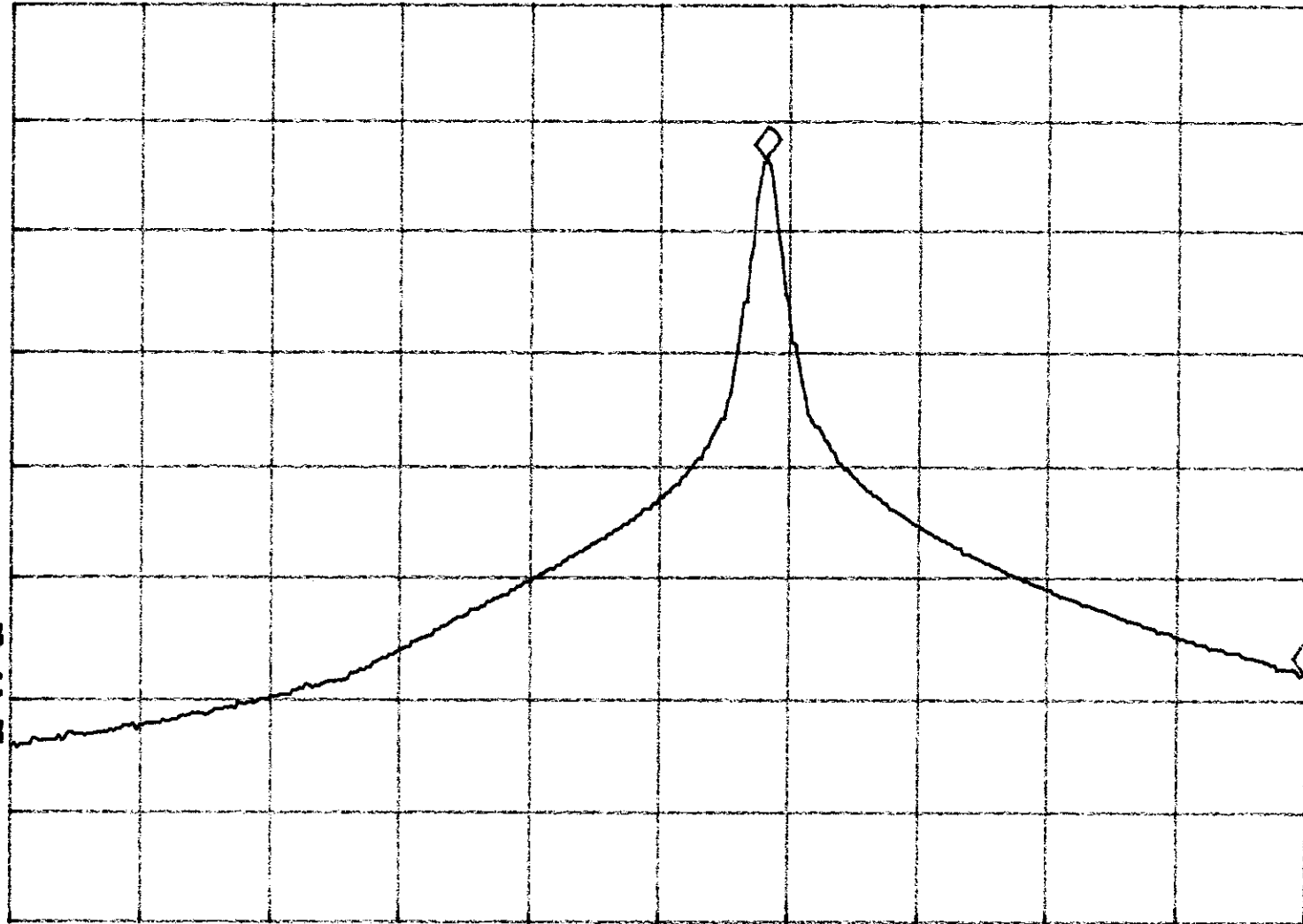
10

dB/

VA SB

SC FC

CORR



START 26.9600 MHz

#RES BW 3.0 kHz

#VBW 10 kHz

STOP 27.2800 MHz

#SWP 5.00 sec