

47

MKR 49.91 MHz

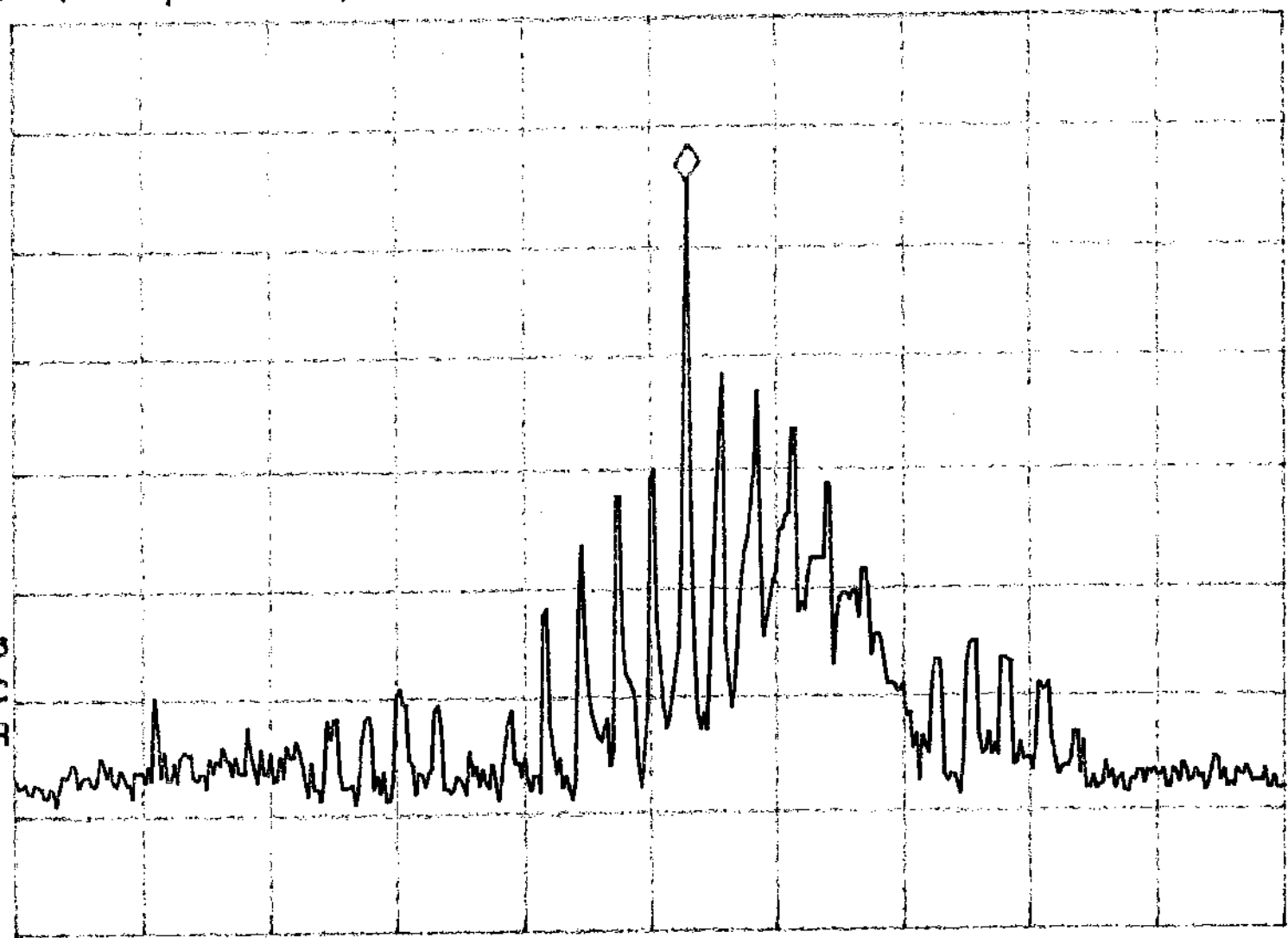
REF 87.0 dB $\mu$ V

AT 10 dB

72.35 dB $\mu$ V

PEAK  
LOG  
10  
dB/

VA SB  
SC FC  
CORR



CENTER 49.91 MHz

SPAN 20.00 MHz

#RES BW 10 KHz

#VBW 100 KHz

#SWP 3.00 sec