

Manufactured and distributed by © 2016 WowWee Group Limited. Product names, designations, and logos are trademarks or registered trademarks of WowWee Group Limited. All rights reserved.

Customer Service Website: <http://www.wowweezone.com>

We recommend that you retain our address for future reference.

Product and colors may vary.

Packaging printed in China.

WARNING! This product is not suitable for children under 3 years because of small parts - choking hazard.

Apple, the Apple logo, iPhone, iPad, iPad mini, iPad Air, and iPod touch are trademarks of Apple Inc., registered in the U.S. and other countries. App Store is a service mark of Apple Inc., registered in the U.S. and other countries.

Android and Google Play are trademarks of Google Inc.

Amazon and Amazon Appstore are trademarks of Amazon.com, Inc.

MADE IN CHINA

CAUTION

Changes or modifications not expressly approved by the party responsible for compliance could void the user's authority to operate the equipment.

NOTE

This equipment has been tested and found to comply with the limits for a class B digital device, pursuant to part 15 of the FCC rules. These limits are designed to provide reasonable protection against harmful interference in a residential installation. This equipment generates, uses and can radiate radio frequency energy and, if not installed and used in accordance with the instructions, may cause harmful interference to radio communications.

However, there is no guarantee that interference will not occur in a particular installation. If this equipment does cause harmful interference to radio or television reception, which can be determined by turning the equipment off and on, the user is encouraged to try and correct the interference by one or more of the following measures:

- Reorient or relocate the receiving antenna
- Increase the separation between the equipment and receiver
- Connect the equipment into an outlet on a circuit different from that to which the receiver is connected
- Consult the dealer or experienced radio/TV technician for help

This Device complies with Part 15 of the FCC Rules. Operation is subject to the following two conditions:

- (1) This device may not cause harmful interference, and
- (2) This device must accept any interference received, including interference that may cause undesired operation.

This device complies with Industry Canada Licence-exempt RSS-210. Operation is subject to the following two conditions:

- (1) This device may not cause interference, and
- (2) This device must accept any interference, including interference that may cause undesired operation of the device.

For these purposes, the party responsible is:

WowWee USA Inc.
7855 Fay Avenue, Suite 310
La Jolla CA, USA 92037
1-800-310-3033

For more indepth instructions, please refer to <http://www.wowwee.com/mip-turbo-dave>

For warranty information, please visit <http://www.wowwee.com/information/warranty>

WARNING! This equipment may experience difficulty and/or memory loss when subjected to any electrostatic discharge, radio frequency interference, or sudden power surge/interruption. The user is encouraged to reset the equipment should any of these occur.



www.despicable.me #DespicableMe

Despicable Me 3 is a trademark and copyright of Universal Studios. Licensed by Universal Studios Licensing LLC. All Rights Reserved.



WowWee Group Limited
Energy Plaza, 301A-C
92 Granville Road
T.S.T. East, Hong Kong

WowWee Canada Inc.
3700 Saint Patrick Street
Suite 206
Montreal, QC, H4E 1A2, Canada



0868US01TOP_MIM



Item No.: 0868

Age : 8+



WowWee Group Limited.

WowWee Canada Inc.

Customer Service:

Manufactured and distributed by
© 2016 WowWee Group Limited.
All Rights Reserved.

Energy Plaza, 301A-C
92 Granville Road
T.S.T. East, Hong Kong

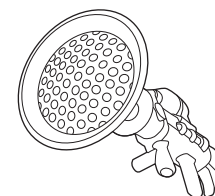
3700 Saint Patrick Street
Suite 206, Montreal
QC H4E 1A2, Canada

<http://www.wowweezone.com>

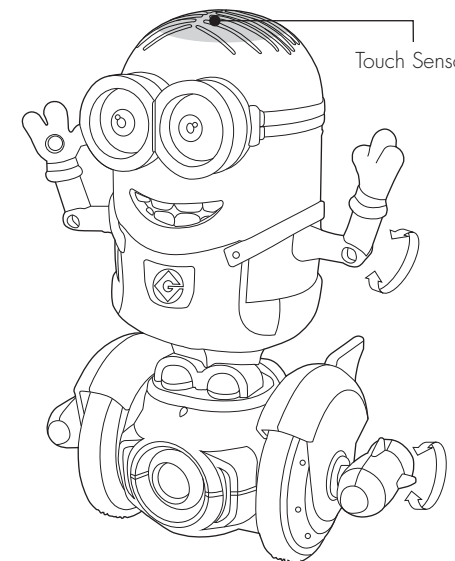
USER MANUAL

Package Contents:

- 1 x Minion MiP™ - Turbo Dave
- 1 x Fart Gun
- 1 x Quick Start Guide
- 1 x User Manual



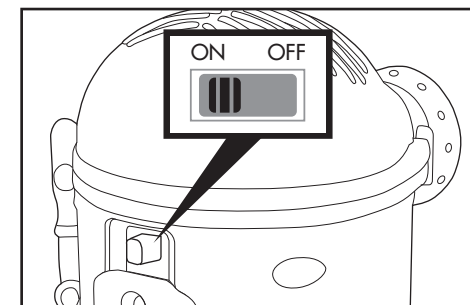
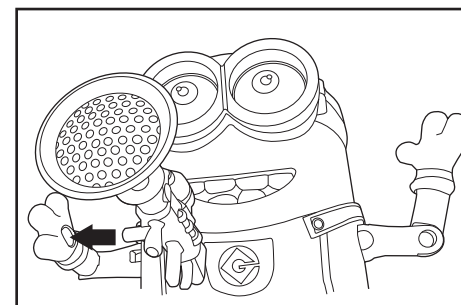
Fart Gun



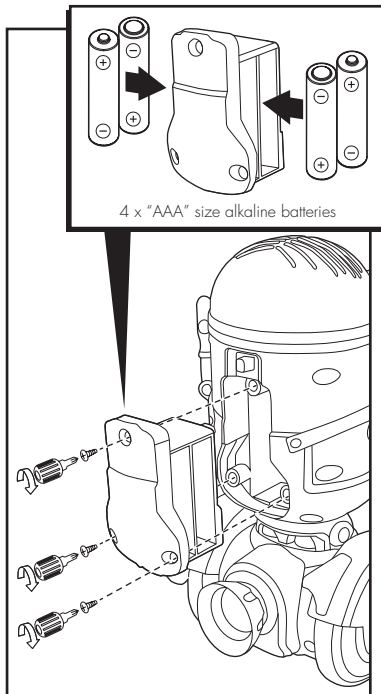
Minion MiP™ - Turbo Dave

Please note the following when operating Turbo Dave:

- Do not immerse Turbo Dave or any of its parts or accessories in water or any other form of liquid.
- Do not drop, throw, or kick Turbo Dave or its accessories as this may damage mechanical functions.
- Do not allow the robot to roam freely or leave unattended near edges from which Turbo Dave could fall.



BATTERY INFORMATION



Turbo Dave Battery Diagram/Installation

Installing or changing batteries in Turbo Dave:

1. To change the batteries, carefully lay Turbo Dave on its front. Do not place Turbo Dave where it could easily fall. Turbo Dave requires 4 x "AAA" size alkaline batteries (not included).
2. Using a Phillips screwdriver (not included) remove the screws on the battery compartment cover located on the back of the robot.
3. Insert the batteries according to the diagram. Ensure that the positive and negative polarities match the illustrations inside the battery compartment.
4. Replace the battery compartment cover and tighten screws using the screwdriver. Do not over-tighten.

LOW BATTERY INDICATORS:

When the batteries grow weak, Turbo Dave will move very slowly and easily fall down while moving or turning. When this occurs, power OFF and replace all batteries.

NOTE: You will know when Turbo Dave's batteries are nearly depleted because it will make a low battery indication sound and then power off. You can also see current battery levels via the Turbo Dave App.

IMPORTANT BATTERY INFORMATION

- Use only fresh batteries of the required size and recommended type.
- Do not mix old and new batteries, different types of batteries [standard (Carbon-Zinc), Alkaline or rechargeable] or rechargeable batteries of different capacities.
- Remove rechargeable batteries from the toy before recharging them.
- Rechargeable batteries are only to be charged under adult supervision.
- Please respect the correct polarity, (+) and (-).
- Do not try to recharge non-rechargeable batteries.
- Do not throw batteries into fire.
- Replace all batteries of the same type/brand at the same time.
- The supply terminals are not to be short-circuited.
- Remove exhausted batteries from the toy.
- Batteries should be replaced by adults.
- Remove batteries if the toy is not going to be played with for some time.
- Battery should be recycled or disposed of as per state and local guidelines.

APP COMPATIBILITY

Apple® iOS and Android™ devices:

Devices must support Bluetooth® Smart (also known as Bluetooth® Low Energy) in order to play.

For the latest compatible device list, please visit <http://www.wowwee.com/devices>

Using the App, you can access a wider range of behaviors, moods and games, or have Turbo Dave dance to pre-loaded songs.

NOTE: Turbo Dave does not have object detection when controlled via the App.

DOWNLOADING THE APP



For Apple® Devices:

Go to the App StoreSM and search for the WowWee "Turbo Dave" App. Then, click download.

For Android™ Devices:

Go to the Google Play™ Store or Amazon Appstore™ and search for the Turbo Dave App. Then, click download.

CONNECTING TO TURBO DAVE WITH YOUR DEVICE

To connect Turbo Dave with your device:

1. Turn Turbo Dave ON as instructed in the Quick Start Guide.
2. Open the Turbo Dave App on your device.
3. The App will bring up your Turbo Dave's ID in a list of available devices.
4. Follow the on-screen instructions to augment Turbo Dave's behavior, moods and games.

Q & A

If you are experiencing difficulties with Turbo Dave, use this troubleshooting guide or visit <http://www.wowweezone.com> for further support.

Q: My Turbo Dave is not responding to my hand gesture commands...

A: Make sure you are giving gestures in front of Turbo Dave's IR Sensors, located across the chest. Note that Turbo Dave cannot detect hand gestures from the side or from behind.

Q: My Turbo Dave has trouble performing turns and is moving too slowly...

A: Make sure there is no dirt or fibers trapped around the wheels. If there is, carefully remove the debris (adult supervision required). If Turbo Dave still moves slowly, try recharging the Rechargeable Batteries.

Q: My Turbo Dave cannot detect objects and obstacles...

A: Try resetting Turbo Dave by turning it Off for a few seconds and then On again using the power switch located on the back. Note that Turbo Dave's IR Sensors are based on reflection. It can see highly reflective surfaces, such as white walls or mirrors more easily and from greater distances than matte or black surfaces.

For more indepth FAQ, please refer to <http://www.wowwee.com/mip-turbo-dave>