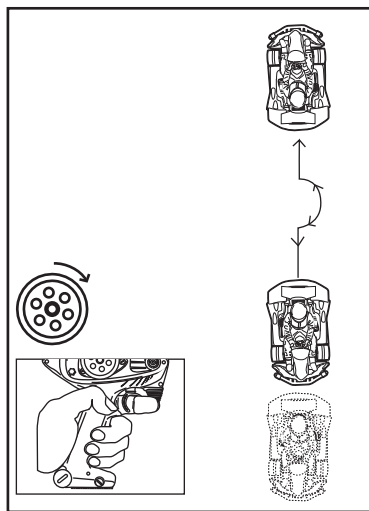
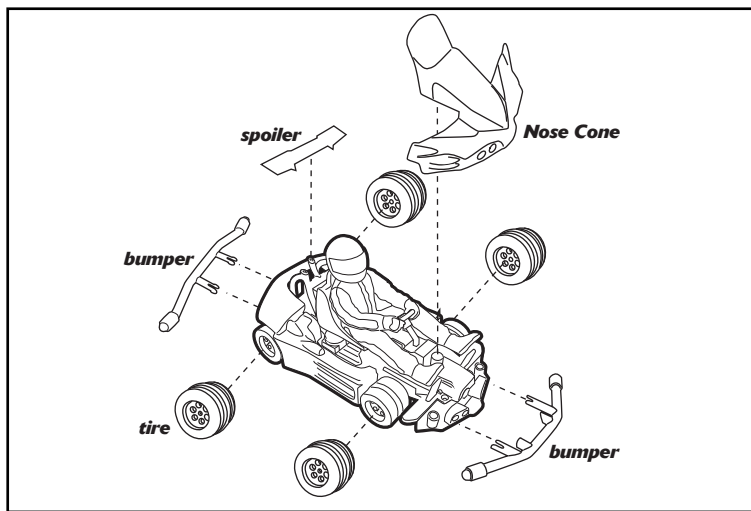


1. For super fast 360° spins, turn the wheel all the way to the right or left, while the trigger is fully pulled.



2. Do a reverse 180°! Drive in reverse, then spin the racer around 180° and drive forward! Drive like a PRO for this stunt!

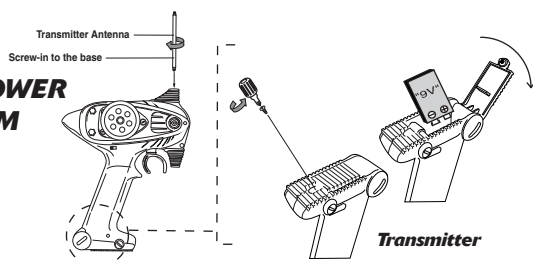
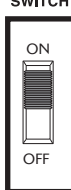


See how fast you can change all of the spare parts - the tires, spoiler and bumper! Use a phillips screw driver to change the tires. For the nose cone, gently remove the front bumper then replace the nose cone. Spoiler: gently remove and replace.

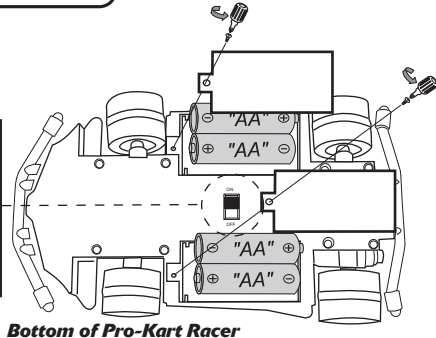
BATTERY AND POWER ON/OFF DIAGRAM

BATTERY REQUIREMENTS
 4x "AA" Batteries (Pro-Kart Unit)
 1x "9V" Battery (Remote Controller)
 Batteries not included

POWER ON / OFF SWITCH



Transmitter



Bottom of Pro-Kart Racer

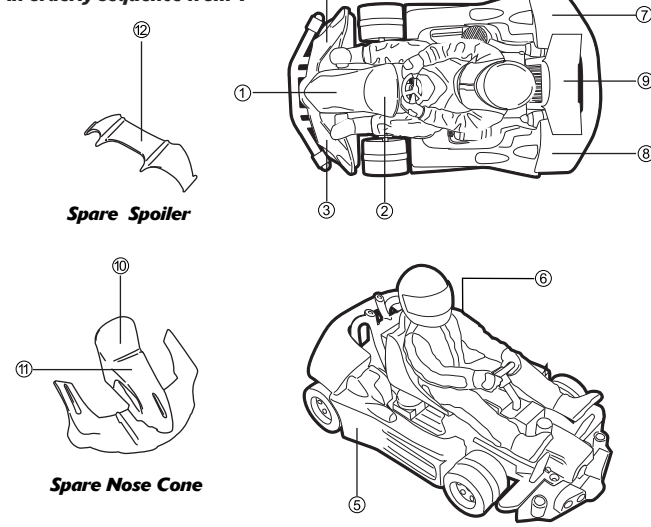
BATTERY INSTALLATION

- Remove the battery compartment cover using a screwdriver as shown.
- Insert correct battery - as shown in diagram, making sure to match the polarity direction.
- Replace the battery cover.

Note: •Quality of control function may deteriorate when battery power is low.

APPLYING DECALS

- Apply the decals as shown, in orderly sequence from 1



ATTENTION !!! IMPORTANT BATTERY INFORMATION

- Use only fresh batteries of the required size and recommended type. Do not mix old and new batteries, different types of batteries (standard alkaline, or rechargeable), or rechargeable batteries of different capacities. We suggest the use of alkaline batteries for best results.
- Please respect the correct polarity (+) and (-)
- Do not try to recharge batteries, nor to open them.
- Do not throw batteries into the fire.
- Remove rechargeable batteries from the toy before being charged.
- Rechargeable batteries are only to be charged under adult supervision.
- Use only the battery types as recommended.
- Replace all batteries of same type/brand at the same time.
- Do not short-circuit the battery contacts.
- Remove exhausted batteries from the toy.

This device complies with Part 15 of the FCC Rules. Operation is subject to the following two conditions: (1) This device may not cause harmful interference, and (2) This device must accept any interference received, including interference that may cause undesired operation.

NOTE: This equipment has been tested and found to comply with the limits for a Class B digital device, pursuant to Part 15 of the FCC Rules. These limits are designed to provide reasonable protection against harmful interference in a residential installation. This equipment generates, uses and can radiate radio frequency energy and, if not installed and used in accordance with the instructions, may cause harmful interference to radio communications. However, there is no guarantee that interference will not occur in a particular installation. If this equipment does cause harmful interference to radio or television reception, which can be determined by turning the equipment off and on, the user is encouraged to try to correct the interference by one or more of the following measures:

- Reorient or relocate the receiving antenna.
- Increase the separation between the equipment and receiver.
- Connect one equipment into an outlet on a circuit different from that to which the receiver is needed.
- Consult the dealer or an experienced radio / TV technician for help.

WARNING:

Changes or modifications to this unit not expressly approved by the party responsible for compliance could void the user's authority to operate the equipment.



NG0223us01

AGES: 4 +
ITEM NO. 0223

Manufactured and Distributed by:
 © 2002 WowWee
 All rights reserved.
 WowWee (Asia Office)
 Unit 301A-C, 92 Granville Rd.,
 T.S.T. East, Kowloon, H.K.
 WowWee (North America Office)
 4480 Cote de Liesse, Suite 320,
 T.M.R. Quebec, H4N 2R1, Canada
 Consumer Hotline: (514) 344-1250
<http://www.wowwee.com>
 Printed in China