

Short Rack FCC Scan

Criterion Technology

Date: Tue Feb 26 14:34:30 2002

EUT: ABS1127SR

Manufacturer: Ericsson

Tester: IWS

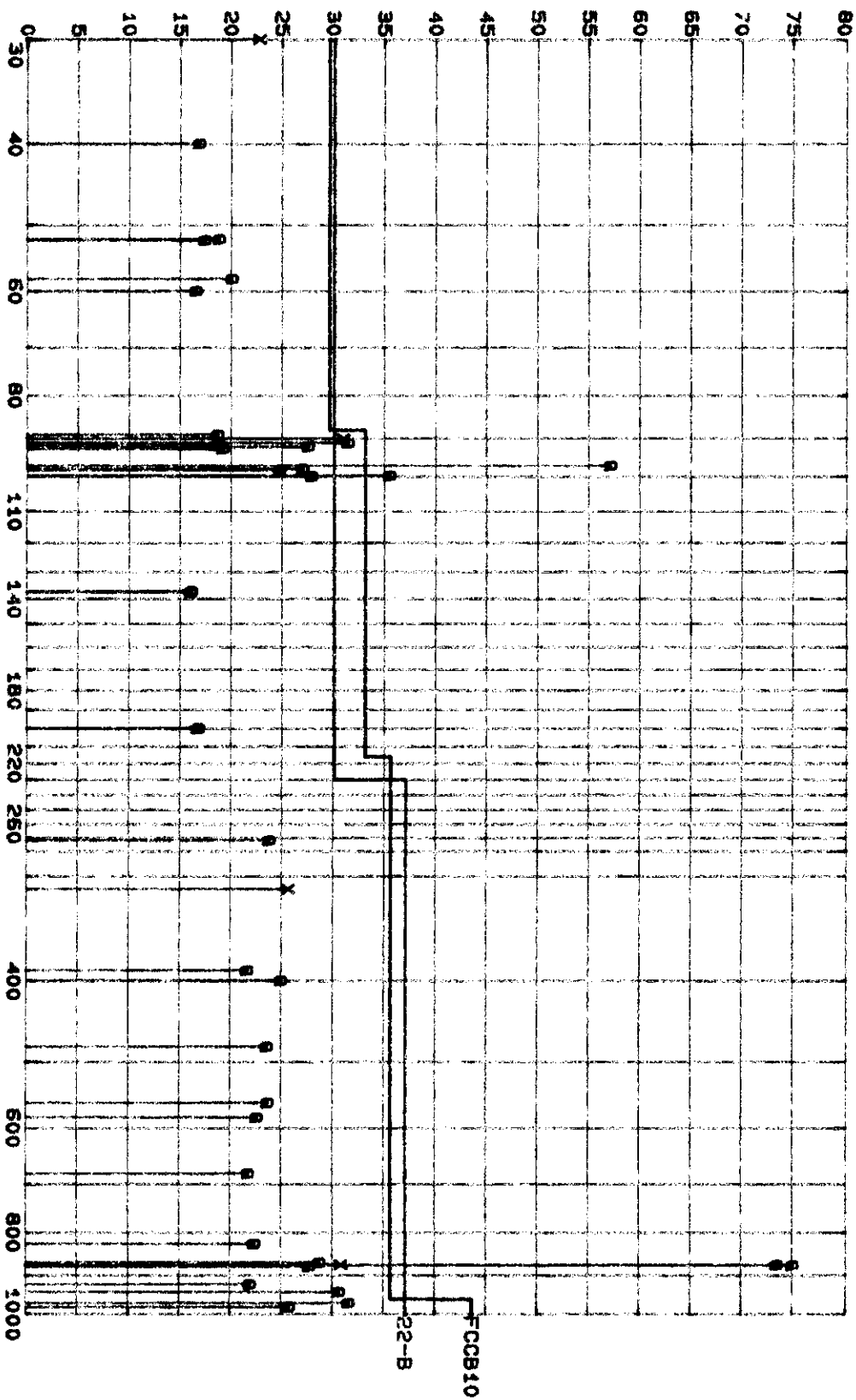
SPID: 020220-513

EUT Level: prototype removed heat exchanger, using indoor cabinet

EUT Information: tabletop, host xmit below g.p.

Test Information: 1.9.3.2 test program, 10M, 208V/50Hz, FCC Part 15 Class B

Test Results (in dBuV/m)



Frequency in MHz

EUT: RBS1127SR

Manufacturer: Ericsson

Tester: lws

Special ID: 020220-513

EUT level: prototype removed heat exchanger, using indoor cabinet

EUT information: tabletop, host xmit below G.P.

Test information is: 1.9.3.2 test program, 10M, 208V/60Hz, FCC Part 15 Class B

Last sorted by margin to limit FCCB10

Print filter is -14.00 dB to limit

Freq, MHz	Value	Sts	FCCB10	22-B	TT	Hght	Az	Comment
876.5160	74.83	q	* 39.27	* 37.83	180	162	V	fo REAR
875.4060	73.30	q	* 37.74	* 36.30	180	162	V	FO front
97.2000	56.97	q	* 23.91	* 26.97	0	100	V	48.6ck NA see .fan
99.9000	35.43	q	* 2.37	* 5.43	0	100	V	33ck NA see .fan
91.2258	31.36	q	-1.70	* 1.36	0	100	V	NA see .fan
90.2249	30.88	m	-2.18	* 0.88	29	100	V	bb/nb NA
874.8000	30.76	m	-4.80	-6.24	174	169	V	48.6 ck
943.1707	30.57	q	-4.99	-6.43	180	162	V	nb
100.0300	27.82	q	-5.24	-2.18	0	100	V	49.99 ck NA +50kxo
92.2271	27.52	q	-5.54	-2.48	90	161	V	bb/nb NA
98.0000	26.93	q	-6.13	-3.07	270	100	V	19.6 ck
30.0000	22.71	m	-6.83	-7.29	57	100	V	5. ck
869.2207	28.67	q	-6.89	-8.33	180	162	V	nb in bb amb?
878.9402	27.68	q	-7.88	-9.32	0	0	b	nb
98.3040	24.68	q	-8.38	-5.32	0	100	V	98.3 ck, 32.77 ck
58.0221	20.02	q	-9.52	-9.98	57	100	V	pulsing nb
311.0406	25.56	m	-10.00	-11.44	291	100	V	nb
399.9950	24.91	q	-10.65	-12.09	0	401	H	80. ck
52.0431	18.79	q	-10.75	-11.21	0	0	b	bb
272.1586	23.72	q	-11.84	-13.28	180	100	H	nb
559.9954	23.63	q	-11.93	-13.37	0	0	b	nb
971.9885	31.50	q	-12.02	-5.50	291	100	V	97.2 ck
480.0000	23.53	q	-12.03	-13.47	180	100	H	80. ck
52.2040	17.36	q	-12.18	-12.64	57	100	V	bb
40.0000	16.82	q	-12.72	-13.18	180	162	V	5. ck
583.1952	22.56	q	-13.00	-14.44	0	100	V	48.6 ck
59.9972	16.49	q	-13.05	-13.51	90	162	V	nb in bb
826.2000	22.32	q	-13.24	-14.68	29	100	V	48.6 ck
923.4000	21.90	q	-13.66	-15.10	29	100	V	48.6 ck
680.4000	21.72	q	-13.84	-15.28	291	100	V	48.6 ck
92.7491	19.15	q	-13.91	-10.85	291	100	V	bb/nb
388.8007	21.61	q	-13.95	-15.39	90	161	V	48.6 ck
91.7290	18.74	q	-14.32	-11.26	57	100	V	bb/nb NA
89.1991	18.63	q	-14.43	-11.37	0	100	V	bb/nb NA
200.0035	16.75	q	-16.31	-13.25	29	100	V	nb
200.0013	16.69	q	-16.37	-13.31	29	100	V	49.99 ck
137.6554	16.03	q	-17.03	-13.97	0	100	H	nb AMB?
137.2000	16.01	q	-17.05	-13.99	291	100	V	19.6 ck
983.0386	25.70	q	-17.82	-11.30	291	100	V	196.6 ck

EUT: RBS1127SR

Manufacturer: Ericsson

Tester: ws

Special ID: 020220-513

EUT level: prototype removed heat exchanger, using indoor cabinet

EUT information: tabletop, host xmit below G.P.

Test information is: 3m measurment for ambients

Unsorted

Print filter is -100.00 dB to limit

Freq, MHz	Value	Sts	FCC-B	22-B3	TT	Hght	Az	Comment
97.2000	58.00	q	* 14.48	* 17.55	0	100	V	48.6 ck NA
99.9000	31.36	q	-12.16	-9.09	0	100	V	33 ck NA
91.2258	19.84	q	-23.68	-20.61	0	100	V	bb/nb NA
90.2249	22.16	q	-21.36	-18.29	180	150	V	bb/nb NA

EUT: RBS1127SR

Manufacturer: Ericsson

Tester: lws

Special ID: 020220-513

EUT level: prototype removed heat exchanger, using indoor cabinet

EUT information: tabletop, host xmit below G.P.

Test information is: 1.9.3.2 test program, 10M, 208V/60Hz, FCC Part 15 Class B

Last sorted by frequency

Print filter is -200.00 dB to limit

Freq, MHz	Value	Sts	FCCB10	22-B	TT	Hght	Az	Comment
30.0000	22.71	m	-6.83	-7.29	57	100	V	5. ck
40.0000	16.82	q	-12.72	-13.18	180	162	V	5. ck
47.4310	15.14	q	-14.40	-14.86	180	400	H	bb
50.0000	13.28	q	-16.26	-16.72	90	400	H	5. ck, 49.99 ck
52.0431	18.79	q	-10.75	-11.21	0	0	b	bb
52.2040	17.36	q	-12.18	-12.64	57	100	V	bb
53.5555	11.71	q	-17.83	-18.29	57	100	V	bb
54.5735	12.61	q	-16.93	-17.39	90	400	H	bb
55.5996	13.06	q	-16.48	-16.94	90	161	V	bb
56.1179	13.04	q	-16.50	-16.96	0	100	V	bb
58.0221	20.02	q	-9.52	-9.98	57	100	V	pulsing nb
58.8000	11.36	q	-18.18	-18.64	90	162	V	19.6 ck
59.0130	13.38	q	-16.16	-16.62	90	162	V	nb
59.0180	13.44	q	-16.10	-16.56	90	162	V	58.98 ck
59.9972	16.49	q	-13.05	-13.51	90	162	V	nb in bb
60.3030	8.88	q	-20.66	-21.12	90	162	V	bb
62.3300	9.86	q	-19.68	-20.14	180	400	H	nb
63.8610	10.39	q	-19.15	-19.61	180	400	H	nb
67.9376	15.10	q	-14.44	-14.90	180	400	H	nb in bb
72.9916	10.73	q	-18.81	-19.27	180	400	H	bb
75.5319	12.16	q	-17.38	-17.84	90	162	V	bb
77.5471	9.43	q	-20.11	-20.57	90	400	H	bb
77.7622	14.00	q	-15.54	-16.00	57	100	V	nb
78.3320	10.64	q	-18.90	-19.36	180	400	H	19.6 ck
78.5555	11.40	q	-18.14	-18.60	180	400	H	bb
78.6392	14.98	q	-14.56	-15.02	90	161	V	78.64 ck, 39.32 ck
79.0631	12.46	q	-17.08	-17.54	180	400	H	bb
79.5791	11.48	q	-18.06	-18.52	180	400	H	bb
79.9991	10.48	q	-19.06	-19.52	180	400	H	80. ck
80.0830	10.53	q	-19.01	-19.47	0	100	V	bb
80.5820	13.23	q	-16.31	-16.77	180	400	H	bb
81.0974	12.64	q	-16.90	-17.36	180	400	H	bb
81.6066	15.05	q	-14.49	-14.95	180	400	H	bb
82.6125	13.48	q	-16.06	-16.52	180	400	H	bb
83.1302	11.61	q	-17.93	-18.39	180	400	H	bb
83.6269	13.19	q	-16.35	-16.81	180	400	H	bb
84.1351	11.87	q	-17.67	-18.13	180	400	H	bb/nb
84.6511	13.36	q	-16.18	-16.64	270	162	V	bb/nb
85.1343	11.90	q	-17.64	-18.10	270	162	V	bb/nb
85.6389	12.83	q	-16.71	-17.17	270	400	H	bb/nb
86.1603	11.57	q	-17.97	-18.43	270	400	H	bb/nb
86.6756	13.08	q	-16.46	-16.92	270	400	H	bb/nb
87.1609	13.05	q	-16.49	-16.95	270	400	H	bb/nb

EUT: RBS1127SR

Manufacturer: Ericsson

Tester: lws

Special ID: 020220-513

EUT level: prototype removed heat exchanger, using indoor cabinet

EUT information: tabletop, host xmit below G.P.

Test information is: 1.9.3.2 test program, 10M, 208V/60Hz, FCC Part 15 Class B

Last sorted by frequency

Print filter is -200.00 dB to limit

Freq, MHz	Value	Sts	FCCB10	22-B	TT	Hght	Az	Comment
87.6763	15.17	q	-14.37	-14.83	270	400	H	bb/nb NA
88.1865	11.07	q	-21.99	-18.93	180	400	H	bb/nb
88.6953	12.38	q	-20.68	-17.62	29	100	V	bb/nb
89.1991	18.63	q	-14.43	-11.37	0	100	V	bb/nb NA
89.6971	13.06	q	-20.00	-16.94	180	400	H	bb/nb
90.2249	30.88	m	-2.18 *	0.88	29	100	V	NA see .fan
90.6985	12.70	q	-20.36	-17.30	180	400	H	bb/nb
91.2258	31.36	q	-1.70 *	1.36	0	100	V	NA see .fan
91.7290	18.74	q	-14.32	-11.26	57	100	V	bb/nb NA
92.2271	27.52	q	-5.54	-2.48	90	161	V	bb/nb NA
92.7491	19.15	q	-13.91	-10.85	291	100	V	bb/nb
97.2000	56.97	q	* 23.91 *	26.97	0	100	V	48.6ck NA see .fan
98.0000	26.93	q	-6.13	-3.07	270	100	V	19.6 ck
98.3040	24.68	q	-8.38	-5.32	0	100	V	98.3 ck, 32.77 ck
99.9000	35.43	q	* 2.37 *	5.43	0	100	V	33ck NA see .fan
100.0300	27.82	q	-5.24	-2.18	0	100	V	49.99 ck NA +50kho
117.9642	13.92	q	-19.14	-16.08	57	100	V	nb in bb
129.7170	12.92	q	-20.14	-17.08	180	400	H	bb
130.2440	14.20	q	-18.86	-15.80	180	100	V	bb
131.7510	13.07	q	-19.99	-16.93	180	100	V	bb
132.2791	12.90	q	-20.16	-17.10	291	100	V	bb
132.7651	11.59	q	-21.47	-18.41	180	400	H	bb
133.2871	14.29	q	-18.77	-15.71	270	100	V	bb
133.7671	12.75	q	-20.31	-17.25	180	400	H	bb
137.2000	16.01	q	-17.05	-13.99	291	100	V	19.6 ck
137.6554	16.03	q	-17.03	-13.97	0	100	H	nb AMB?
145.7990	15.89	q	-17.17	-14.11	291	100	V	nb
155.5185	12.69	q	-20.37	-17.31	90	161	V	nb
157.2810	11.71	q	-21.35	-18.29	180	100	V	78.64 ck, 39.32 ck
159.9998	12.83	q	-20.23	-17.17	180	100	V	80. ck
170.0965	12.00	q	-21.06	-18.00	180	100	V	nb
176.9472	11.52	q	-21.54	-18.48	90	400	H	58.98 ck
177.0085	10.89	q	-22.17	-19.11	90	400	H	nb in bb
179.9991	13.09	q	-19.97	-16.91	174	169	V	nb in bb
194.3962	14.03	q	-19.03	-15.97	29	100	V	48.6 ck
196.5450	12.24	q	-20.82	-17.76	57	100	V	nb in bb
196.6128	12.34	q	-20.72	-17.66	0	100	V	196.6 ck, 98.3 ck, 32.7 ck
200.0013	16.69	q	-16.37	-13.31	29	100	V	49.99 ck
200.0035	16.75	q	-16.31	-13.25	29	100	V	nb
220.0010	13.23	q	-22.33	-16.77	29	100	V	nb
236.0465	12.27	q	-23.29	-24.73	180	400	H	nb in bb
239.9960	16.24	q	-19.32	-20.76	90	96	H	.
243.0000	16.46	q	-19.10	-20.54	29	100	V	48.6 ck
249.9500	10.65	q	-24.91	-26.35	180	400	H	49.99 ck

EUT: RBS1127SR

Manufacturer: Ericsson

Tester: lws

Special ID: 020220-513

EUT level: prototype removed heat exchanger, using indoor cabinet

EUT information: tabletop, host xmit below G.P.

Test information is: 1.9.3.2 test program, 10M, 208V/60Hz, FCC Part 15 Class B

Last sorted by frequency

Print filter is -200.00 dB to limit

Freq, MHz	Value	Sts	FCCB10	22-B	TT	Hght	Az	Comment
250.0750	17.57	q	-17.99	-19.43	270	400	H	.
255.2511	14.73	q	-20.83	-22.27	180	162	V	nb
256.4730	16.67	q	-18.89	-20.33	270	400	H	nb
260.0010	11.38	q	-24.18	-25.62	180	400	H	nb
265.5587	14.80	q	-20.76	-22.20	270	162	V	bb
272.1586	23.72	q	-11.84	-13.28	180	100	H	nb
275.2080	17.40	q	-18.16	-19.60	90	400	H	nb in bb
280.0000	14.64	q	-20.92	-22.36	180	100	H	nb
291.5940	16.06	q	-19.50	-20.94	90	400	H	48.6 ck
294.9120	12.87	q	-22.69	-24.13	29	100	V	32.77 ck, 58.98 ck
299.9972	13.92	q	-21.64	-23.08	180	400	H	49.99 ck
299.9987	14.06	q	-21.50	-22.94	90	400	H	nb
311.0406	25.56	m	-10.00	-11.44	291	100	V	nb
315.8976	16.76	q	-18.80	-20.24	270	100	V	nb in bb
320.0000	14.84	q	-20.72	-22.16	291	100	V	80. ck
340.2000	13.03	q	-22.53	-23.97	174	169	V	48.6 ck
349.9202	17.34	q	-18.22	-19.66	90	161	V	49.99 ck
353.9742	12.28	q	-23.28	-24.72	0	100	H	nb
359.9996	16.66	q	-18.90	-20.34	180	100	H	nb
388.8007	21.61	q	-13.95	-15.39	90	161	V	48.6 ck
393.2140	19.35	q	-16.21	-17.65	270	400	H	nb in bb
399.9950	24.91	q	-10.65	-12.09	0	401	H	80. ck
427.6811	17.25	q	-18.31	-19.75	174	169	V	nb GPS?
437.4017	15.33	q	-20.23	-21.67	180	162	V	48.6 ck
440.0014	18.75	q	-16.81	-18.25	0	0	b	nb
452.8535	14.90	q	-20.66	-22.10	291	100	V	nb NA
480.0000	23.53	q	-12.03	-13.47	180	100	H	80. ck
486.0009	18.57	q	-16.99	-18.43	270	100	V	48.6 ck
510.3011	18.81	q	-16.75	-18.19	90	161	V	nb
534.5984	20.95	q	-14.61	-16.05	180	162	V	48.6 ck
559.9954	23.63	q	-11.93	-13.37	0	0	b	nb
583.1952	22.56	q	-13.00	-14.44	0	100	V	48.6 ck
600.0562	20.85	q	-14.71	-16.15	180	162	V	nb
680.4000	21.72	q	-13.84	-15.28	291	100	V	48.6 ck
699.8373	19.55	q	-16.01	-17.45	90	161	V	49.99 ck
729.0031	20.28	q	-15.28	-16.72	29	100	V	48.6 ck
777.5941	20.84	q	-14.72	-16.16	57	100	V	48.6 ck
826.2000	22.32	q	-13.24	-14.68	29	100	V	48.6 ck
869.2207	28.67	q	-6.89	-8.33	180	162	V	nb in bb amb?
874.8000	30.76	m	-4.80	-6.24	174	169	V	48.6 ck
875.4060	73.30	q	* 37.74	* 36.30	180	162	V	FO front
876.5160	74.83	q	* 39.27	* 37.83	180	162	V	fo REAR
878.9402	27.68	q	-7.88	-9.32	0	0	b	nb
923.4000	21.90	q	-13.66	-15.10	29	100	V	48.6 ck

EUT: RBS1127SR

Manufacturer: Ericsson

Tester: lws

Special ID: 020220-513

EUT level: prototype removed heat exchanger, using indoor cabinet

EUT information: tabletop, host xmit below G.P.

Test information is: 1.9.3.2 test program, 10M, 208V/60Hz, FCC Part 15 Class B

Last sorted by frequency

Print filter is -200.00 dB to limit

Freq, MHz	Value	Sts	FCCB10	22-B	TT	Hght	Az	Comment
943.1707	30.57	q	-4.99	-6.43	180	162	V	nb
971.9885	31.50	q	-12.02	-5.50	291	100	V	97.2 ck
983.0386	25.70	q	-17.82	-11.30	291	100	V	196.6 ck

Short Rack FCC 1GHz-10GHz

Ortstarion Technology

Date: Wed Feb 27 10:22:54 2002

EUT: RBS1127SR

Manufacturer: Ericsson

Tester: lwa

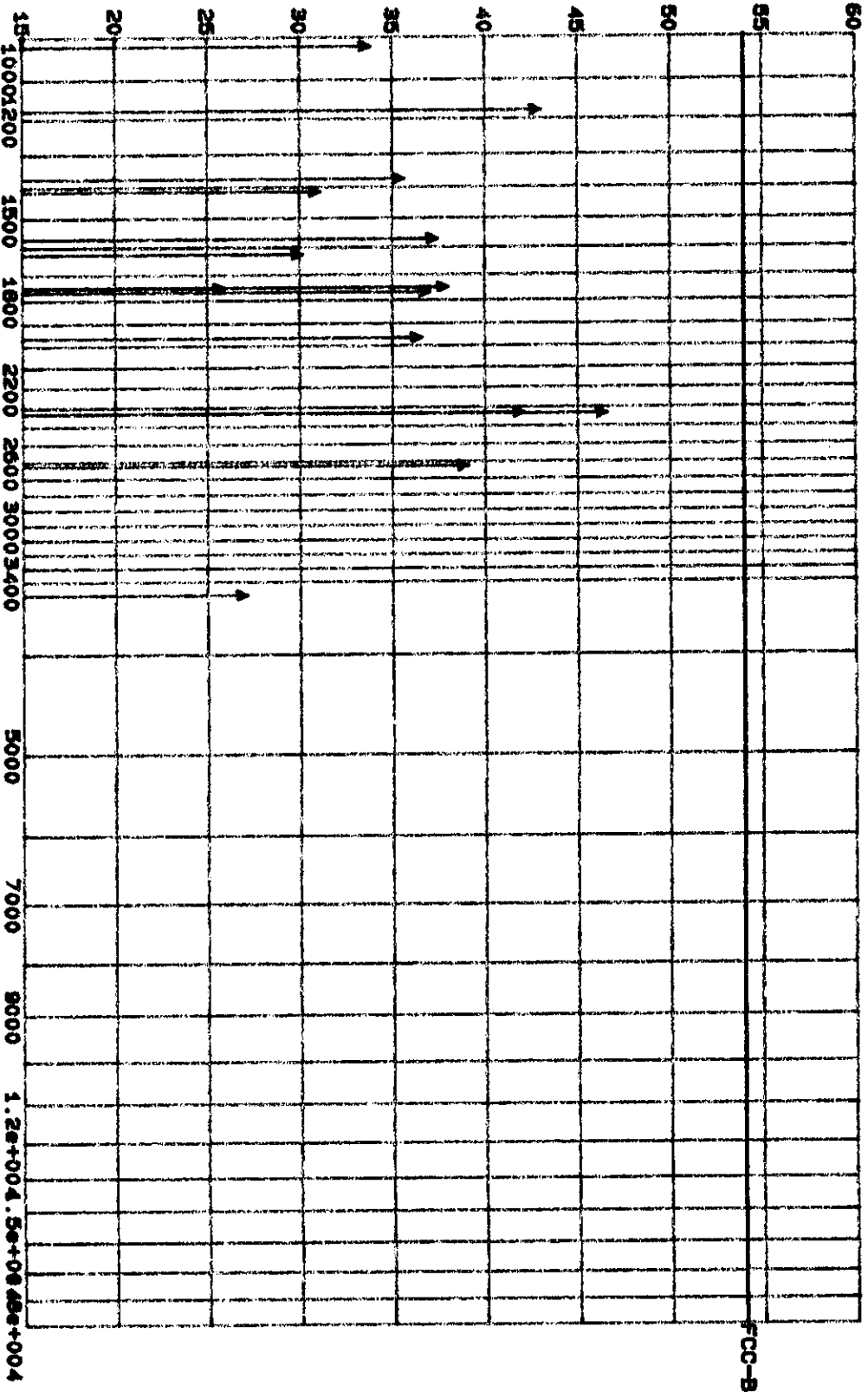
SPID: 020220-B13

EUT Level: prototype removed heat exchanger, using indoor cabinet

EUT Information: tablet, host xmit below S.P.

Test Information: 1.9.3.2 test program, 10M, 20BV/50Hz, FCC Part 15 Class B

Test Results (1m dBuV/m)



Frequency in kHz

EUT: RBS1127SR

Manufacturer: Ericsson

Tester: lws

Special ID: 020220-513

EUT level: prototype removed heat exchanger, using indoor cabinet

EUT information: tabletop, host xmit below G.P.

Test information is: 1.9.3.2 test program, 10M, 208V/60Hz, FCC Part 15 Class B

Last sorted by margin to limit FCC-B

Print filter is -200.00 dB to limit

Freq, MHz	Value	Sts	FCC-B	TT	Hght	Az	Comment
2335.0965	46.28	a	-7.70	286	119	V	.
1179.6601	42.72	a	-11.26	326	154	H	.
2333.1607	41.82	a	-12.16	-3	155	H	.
2627.9200	38.81	a	-15.17	146	105	H	.
1751.4484	37.74	a	-16.24	174	131	H	.
1572.8635	37.16	a	-16.82	85	153	V	.
1769.4735	36.76	a	-17.22	110	104	H	.
1966.0808	36.31	a	-17.67	41	102	H	.
1376.2545	35.35	a	-18.63	355	137	H	.
1022.2130	33.54	a	-20.44	270	160	H	.
1415.5755	30.83	a	-23.15	68	130	H	.
1626.4700	29.88	a	-24.10	245	165	H	.
3506.0000	26.84	a	-27.14	187	155	V	876.5 ck
1753.0000	25.66	a	-28.32	362	154	V	876.5 ck
876.5000	-119.72	a	-165.74	187	155	V	876.5 ck

EUT: RBS1127SR

Manufacturer: Ericsson

Tester: lws

Special ID: 020220-513

EUT level: prototype removed heat exchanger, using indoor cabinet

EUT information: tabletop, host xmit below G.P.

Test information is: 1.9.3.2 test program, 10M, 208V/60Hz, FCC Part 15 Class B

Last sorted by frequency

Print filter is -200.00 dB to limit

Freq, MHz	Value	Sts	FCC-B	TT	Hght	Az	Comment
876.5000	-119.72	a	-165.74		187	155	V 876.5 ck
1022.2130	33.54	a	-20.44	270	160	H	.
1179.6601	42.72	a	-11.26	326	154	H	.
1376.2545	35.35	a	-18.63	355	137	H	.
1415.5755	30.83	a	-23.15	68	130	H	.
1572.8635	37.16	a	-16.82	85	153	V	.
1626.4700	29.88	a	-24.10	245	165	H	.
1751.4484	37.74	a	-16.24	174	131	H	.
1753.0000	25.66	a	-28.32	362	154	V	876.5 ck
1769.4735	36.76	a	-17.22	110	104	H	.
1966.0808	36.31	a	-17.67	41	102	H	.
2333.1607	41.82	a	-12.16	-3	155	H	.
2335.0965	46.28	a	-7.70	286	119	V	.
2627.9200	38.81	a	-15.17	146	105	H	.
3506.0000	26.84	a	-27.14	187	155	V	876.5 ck

EUT: RBS1127SR

Manufacturer: Ericsson

Tester: lws

Special ID: 020220-513

EUT level: prototype removed heat exchanger, using indoor cabinet

EUT information: tabletop, host xmit below G.P.

Test information is: 1.9.3.2 test program, 10M, 208V/60Hz, FCC Part 15 Class B

Last sorted by frequency

Print filter is -350.00 dB to limit

Freq, MHz	I-val	Final	Sts	TT	Hght	Az	Time	Comment
876.5000	80.28	-119.72	a	187	155	V	Wed Feb 27 10:11:40 2002	876.5 ck
1022.2130	49.85	33.54	a	270	160	H	Tue Feb 26 15:34:20 2002	.
1179.6601	57.68	42.72	a	326	154	H	Wed Feb 27 10:01:54 2002	.
1376.2545	48.67	35.35	a	355	137	H	Tue Feb 26 15:22:31 2002	.
1415.5755	43.81	30.83	a	68	130	H	Tue Feb 26 15:31:45 2002	.
1572.8635	48.66	37.16	a	85	153	V	Tue Feb 26 15:53:33 2002	.
1626.4700	40.93	29.88	a	245	165	H	Tue Feb 26 15:59:57 2002	.
1751.4484	47.59	37.74	a	174	131	H	Tue Feb 26 16:04:30 2002	.
1753.0000	35.50	25.66	a	362	154	V	Wed Feb 27 10:05:32 2002	876.5 ck
1769.4735	46.45	36.76	a	110	104	H	Tue Feb 26 16:08:15 2002	.
1966.0808	43.34	36.31	a	41	102	H	Tue Feb 26 16:11:54 2002	.
2333.1607	47.15	41.82	a	-3	155	H	Wed Feb 27 10:19:28 2002	.
2335.0965	51.61	46.28	a	286	119	V	Tue Feb 26 16:21:32 2002	.
2627.9200	44.25	38.81	a	146	105	H	Tue Feb 26 16:52:23 2002	.
3506.0000	31.36	26.84	a	187	155	V	Wed Feb 27 10:13:36 2002	876.5 ck
4382.5000	0.00	-200.00	s	0	0	b	876.5 ck
5259.0000	0.00	-200.00	s	0	0	b	876.5 ck
6135.5000	0.00	-200.00	s	0	0	b	876.5 ck
7012.0000	0.00	-200.00	s	0	0	b	876.5 ck
7888.5000	0.00	-200.00	s	0	0	b	876.5 ck
8765.0000	0.00	-200.00	s	0	0	b	876.5 ck
9641.5000	0.00	-200.00	s	0	0	b	876.5 ck
10518.0000	0.00	-200.00	s	0	0	b	876.5 ck
11394.5000	0.00	-200.00	s	0	0	b	876.5 ck
12271.0000	0.00	-200.00	s	0	0	b	876.5 ck
13147.5000	0.00	-200.00	s	0	0	b	876.5 ck
14024.0000	0.00	-200.00	s	0	0	b	876.5 ck
14900.5000	0.00	-200.00	s	0	0	b	876.5 ck
15777.0000	0.00	-200.00	s	0	0	b	876.5 ck
16653.5000	0.00	-200.00	s	0	0	b	876.5 ck
17530.0000	0.00	-200.00	s	0	0	b	876.5 ck

Criterion Technology

Date: Thu Feb 28 10:22:11 2002

EUT: ABS11275R

Manufacturer: Ericsson

Short RackGR1089 Doors Open

Tester: tom

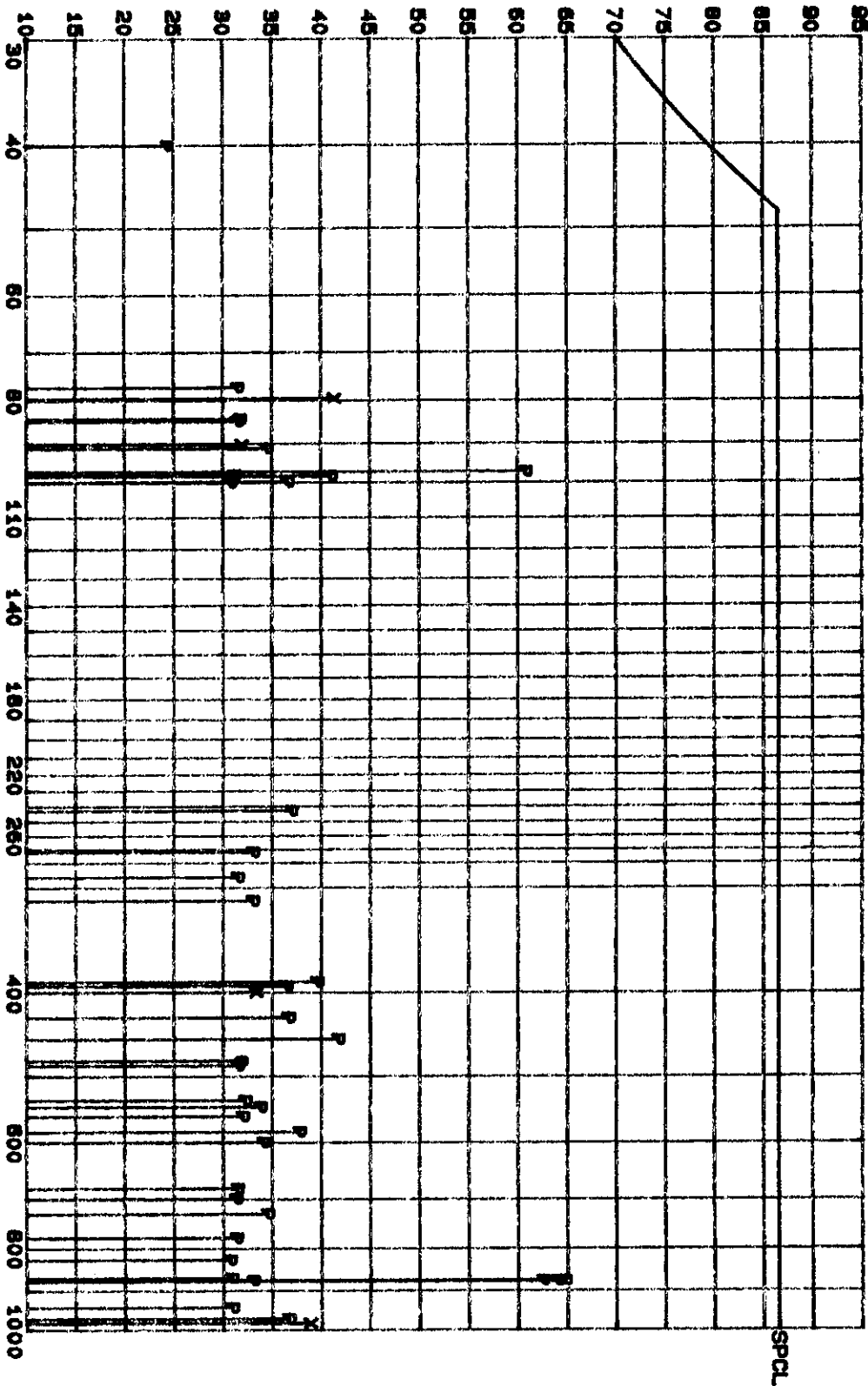
SPID: 020220-813

EUT Level: prototyp. Indoor chassis with door open

EUT Information: tabiotop, host xmit below G.P.

Test Information: 1.9.3.2 test program, 10W, 208/60 gr-1089 door open tests

Test Results (in dBV/m)



EUT: RBS1127SR

Manufacturer: Ericsson

Tester: tom

Special ID: 020220-513

EUT level: prototyp, indoor chassis with door open

EUT information: tabletop, host xmit below G.P.

Test information is: 1.9.3.2 test program, 10M, 208/60 gr-1089 door open tests

Last sorted by margin to limit SPCL w/ I-sort

Print filter is -56.00 dB to limit

Freq, MHz	Value	Sts	SPCL	TT	Hght	Az	Comment
79.5791	41.33	m	-45.17	-1	401	H	bb
983.0411	38.86	m	-47.64	87	140	H	196.6 ck
400.0002	33.36	m	-53.14	81	162	V	80. ck
90.2249	31.96	m	-54.54	180	101	V	bb/nb NA
480.0000	31.88	q	-54.62	91	101	V	80. ck
875.6457	64.72	p	-21.78	270	401	H	.
875.8946	64.03	p	-22.47	270	401	H	FO
876.5160	63.95	p	-22.55	270	401	H	fo REAR
875.4060	62.50	p	-24.00	180	100	H	FO front
97.2000	60.82	p	-25.68	-1	101	V	48.6ck NA see .fan
452.8535	41.74	p	-44.76	270	101	V	nb NA
98.3040	40.99	p	-45.51	101	122	V	98.3 ck, 32.77 ck
388.7994	39.61	p	-46.89	87	141	H	48.6 ck
583.1952	37.77	p	-48.73	76	401	H	48.6 ck
243.0000	37.00	p	-49.50	87	141	H	48.6 ck
427.6811	36.68	p	-49.82	87	141	H	nb GPS?
971.9941	36.66	p	-49.84	87	141	H	97.2 ck
99.9000	36.60	p	-49.90	101	122	V	33ck NA see .fan
393.2140	36.44	p	-50.06	270	101	V	nb in bb
729.0031	34.54	p	-51.96	87	141	H	48.6 ck
91.2258	34.49	p	-52.01	-1	101	V	NA see .fan
600.0562	34.11	p	-52.39	101	122	V	nb
544.3147	33.82	p	-52.68	87	141	H	nb
874.8000	33.07	p	-53.43	76	401	H	48.6 ck
272.1586	33.07	p	-53.43	81	162	V	nb
311.0406	33.05	p	-53.45	81	162	V	nb
534.5975	32.25	p	-54.25	101	122	V	48.6 ck
558.8982	31.99	p	-54.51	101	122	V	.
84.1351	31.76	p	-54.74	-1	101	V	bb/nb
40.0000	24.36	p	-54.96	101	122	V	5. ck
291.5940	31.51	p	-54.99	101	122	V	48.6 ck
77.1795	31.50	p	-55.00	-1	161	V	bb
84.6511	31.49	p	-55.01	-1	101	V	bb/nb
486.0009	31.48	p	-55.02	81	162	V	48.6 ck
680.4000	31.44	p	-55.06	87	141	H	48.6 ck
777.5941	31.35	p	-55.15	87	141	H	48.6 ck
699.8373	31.30	p	-55.20	87	141	H	49.99 ck
98.0000	31.19	p	-55.31	-1	101	V	19.6 ck
943.1707	30.93	p	-55.57	87	141	H	nb
869.2207	30.85	p	-55.65	270	101	V	nb in bb amb?
100.0300	30.77	p	-55.73	101	122	V	49.99 ck NA +50kha
826.2000	30.69	p	-55.81	87	141	H	48.6 ck

EUT: RBS1127SR

Manufacturer: Ericsson

Tester: tom

Special ID: 020220-513

EUT level: prototyp, indoor chassis with door open

EUT information: tabletop, host xmit below G.P.

Test information is: 1.9.3.2 test program, 10M, 208/60 gr-1089 door open tests

Last sorted by frequency

Print filter is -56.00 dB to limit

Freq, MHz	Value	Sts	SPCL	TT	Hght	Az	Comment
40.0000	24.36	p	-54.96	101	122	V	5. ck
77.1795	31.50	p	-55.00	-1	161	V	bb
79.5791	41.33	m	-45.17	-1	401	H	bb
84.1351	31.76	p	-54.74	-1	101	V	bb/nb
84.6511	31.49	p	-55.01	-1	101	V	bb/nb
90.2249	31.96	m	-54.54	180	101	V	bb/nb NA
91.2258	34.49	p	-52.01	-1	101	V	NA see .fan
97.2000	60.82	p	-25.68	-1	101	V	48.6ck NA see .fan
98.0000	31.19	p	-55.31	-1	101	V	19.6 ck
98.3040	40.99	p	-45.51	101	122	V	98.3 ck, 32.77 ck
99.9000	36.60	p	-49.90	101	122	V	33ck NA see .fan
100.0300	30.77	p	-55.73	101	122	V	49.99 ck NA +50kho
243.0000	37.00	p	-49.50	87	141	H	48.6 ck
272.1586	33.07	p	-53.43	81	162	V	nb
291.5940	31.51	p	-54.99	101	122	V	48.6 ck
311.0406	33.05	p	-53.45	81	162	V	nb
388.7994	39.61	p	-46.89	87	141	H	48.6 ck
393.2140	36.44	p	-50.06	270	101	V	nb in bb
400.0002	33.36	m	-53.14	81	162	V	80. ck
427.6811	36.68	p	-49.82	87	141	H	nb GPS?
452.8535	41.74	p	-44.76	270	101	V	nb NA
480.0000	31.88	q	-54.62	91	101	V	80. ck
486.0009	31.48	p	-55.02	81	162	V	48.6 ck
534.5975	32.25	p	-54.25	101	122	V	48.6 ck
544.3147	33.82	p	-52.68	87	141	H	nb
558.8982	31.99	p	-54.51	101	122	V	.
583.1952	37.77	p	-48.73	76	401	H	48.6 ck
600.0562	34.11	p	-52.39	101	122	V	nb
680.4000	31.44	p	-55.06	87	141	H	48.6 ck
699.8373	31.30	p	-55.20	87	141	H	49.99 ck
729.0031	34.54	p	-51.96	87	141	H	48.6 ck
777.5941	31.35	p	-55.15	87	141	H	48.6 ck
826.2000	30.69	p	-55.81	87	141	H	48.6 ck
869.2207	30.85	p	-55.65	270	101	V	nb in bb amb?
874.8000	33.07	p	-53.43	76	401	H	48.6 ck
875.4060	62.50	p	-24.00	180	100	H	FO front
875.6457	64.72	p	-21.78	270	401	H	.
875.8946	64.03	p	-22.47	270	401	H	FO
876.5160	63.95	p	-22.55	270	401	H	fo REAR
943.1707	30.93	p	-55.57	87	141	H	nb
971.9941	36.66	p	-49.84	87	141	H	97.2 ck
983.0411	38.86	m	-47.64	87	140	H	196.6 ck

EUT: RBS1127SR

Manufacturer: Ericsson

Tester: tom

Special ID: 020220-513

EUT level: prototyp, indoor chassis with door open

EUT information: tabletop, host xmit below G.P.

Test information is: 1.9.3.2 test program, 10M, 208/60 gr-1089 door open tests

Last sorted by frequency

Print filter is -350.00 dB to limit

Freq, MHz	I-val	Final	Sts	TT	Hght	Az	Time	Comment
40.0000	33.89	24.36	p	101	122	V	Thu Feb 28 10:16:31 2002	5. ck
47.4310	41.79	28.42	p	-1	401	H	Thu Feb 28 08:42:41 2002	bb
50.0000	38.19	23.66	p	270	401	H	Thu Feb 28 09:08:27 2002	5. ck, 49.99 ck
52.0431	44.42	29.22	p	270	401	H	Thu Feb 28 09:08:29 2002	bb
52.2040	43.40	28.15	p	270	401	H	Thu Feb 28 09:08:30 2002	bb
53.5555	35.02	19.35	p	179	401	H	Thu Feb 28 09:13:38 2002	bb
54.5735	42.23	26.27	p	179	401	H	Thu Feb 28 09:13:40 2002	bb
55.5996	38.59	22.40	p	270	401	H	Thu Feb 28 09:08:34 2002	bb
56.1179	38.99	22.68	p	179	401	H	Thu Feb 28 09:13:43 2002	bb
58.0221	39.13	22.56	p	-1	401	H	Thu Feb 28 08:42:54 2002	pulsing nb
58.8000	38.98	22.34	p	-1	401	H	Thu Feb 28 08:42:55 2002	19.6 ck
59.0130	39.60	22.94	p	-1	401	H	Thu Feb 28 08:42:56 2002	nb
59.0180	39.32	22.66	p	179	401	H	Thu Feb 28 09:13:48 2002	58.98 ck
59.9972	37.06	20.39	p	81	162	V	Thu Feb 28 09:45:22 2002	nb in bb
60.3030	36.68	20.02	p	179	401	H	Thu Feb 28 09:13:51 2002	bb
62.3300	41.79	25.15	p	179	401	H	Thu Feb 28 09:13:52 2002	nb
63.8610	41.68	25.07	p	270	401	H	Thu Feb 28 09:08:47 2002	nb
67.9376	46.44	30.02	p	179	401	H	Thu Feb 28 09:13:55 2002	nb in bb
72.9916	36.84	20.77	p	270	101	V	Thu Feb 28 09:00:39 2002	bb
75.5319	36.73	20.86	p	179	401	H	Thu Feb 28 09:13:58 2002	bb
77.1795	47.27	31.50	p	-1	161	V	Thu Feb 28 08:50:03 2002	bb
77.5471	41.47	25.72	p	180	162	V	Thu Feb 28 08:52:26 2002	bb
77.7622	42.39	26.66	p	81	162	V	Thu Feb 28 09:45:35 2002	nb
78.3320	40.33	24.63	p	179	401	H	Thu Feb 28 09:14:04 2002	19.6 ck
78.5555	38.27	22.59	p	179	401	H	Thu Feb 28 09:14:05 2002	bb
78.6392	43.73	28.07	p	81	162	V	Thu Feb 28 09:45:39 2002	78.64 ck, 39.32 ck
79.0631	38.22	22.63	p	179	401	H	Thu Feb 28 09:14:08 2002	bb
79.5791	56.83	41.33	m	-1	401	H	Thu Feb 28 08:43:17 2002	bb
79.7069	44.21	28.74	p	81	162	V	Thu Feb 28 09:45:43 2002	nb bb
79.9991	39.65	24.23	p	-1	101	V	Thu Feb 28 08:35:16 2002	80. ck
80.0830	44.53	29.13	p	-1	101	V	Thu Feb 28 08:35:18 2002	bb
80.5820	42.85	27.54	p	179	401	H	Thu Feb 28 09:14:15 2002	bb
81.0974	41.54	26.31	p	179	401	H	Thu Feb 28 09:14:16 2002	bb
81.2307	45.41	30.20	p	81	162	V	Thu Feb 28 09:45:50 2002	bb/nb
81.6066	44.76	29.60	p	179	401	H	Thu Feb 28 09:14:19 2002	bb
82.6125	41.50	26.48	p	179	401	H	Thu Feb 28 09:14:21 2002	bb
83.1302	40.38	25.44	p	270	101	V	Thu Feb 28 09:00:59 2002	bb
83.6269	41.59	26.73	p	179	401	H	Thu Feb 28 09:14:23 2002	bb
84.1351	46.53	31.76	p	-1	101	V	Thu Feb 28 08:35:28 2002	bb/nb
84.6511	46.17	31.49	p	-1	101	V	Thu Feb 28 08:35:29 2002	bb/nb
85.1155	34.55	19.95	p	92	103	V	Thu Feb 28 09:55:27 2002	bb/nb
85.6389	40.11	25.60	p	179	401	H	Thu Feb 28 09:14:29 2002	bb/nb
86.1603	36.78	22.37	p	179	401	H	Thu Feb 28 09:14:30 2002	bb/nb
86.6756	40.14	25.83	p	179	401	H	Thu Feb 28 09:14:32 2002	bb/nb

EUT: RBS1127SR

Manufacturer: Ericsson

Tester: tom

Special ID: 020220-513

EUT level: prototyp, indoor chassis with door open

EUT information: tabletop, host xmit below G.P.

Test information is: 1.9.3.2 test program, 10M, 208/60 gr-1089 door open tests

Last sorted by frequency

Print filter is -350.00 dB to limit

Freq, MHz	I-val	Final	Sts	TT	Hght	Az	Time	Comment
87.1609	39.83	25.62	p	179	401	H	Thu Feb 28 09:14:33 2002	bb/nb
87.6763	38.71	24.60	p	270	161	V	Thu Feb 28 09:05:02 2002	bb/nb NA
88.1865	40.45	26.44	p	179	401	H	Thu Feb 28 09:14:36 2002	bb/nb
88.6953	39.04	25.12	p	270	401	H	Thu Feb 28 09:09:29 2002	bb/nb
89.1991	40.62	26.79	p	179	401	H	Thu Feb 28 09:14:39 2002	bb/nb NA
89.6971	42.33	28.59	p	179	401	H	Thu Feb 28 09:14:40 2002	bb/nb
90.2249	45.60	31.96	m	180	101	V	Thu Feb 28 08:57:30 2002	bb/nb NA
90.6985	41.56	28.00	p	179	401	H	Thu Feb 28 09:14:43 2002	bb/nb
91.2258	47.97	34.49	p	-1	101	V	Thu Feb 28 08:35:48 2002	NA see .fan
91.7290	41.04	27.64	p	179	401	H	Thu Feb 28 09:14:46 2002	bb/nb NA
92.7491	41.71	28.47	p	179	401	H	Thu Feb 28 09:14:49 2002	bb/nb
97.2000	73.43	60.82	p	-1	101	V	Thu Feb 28 08:35:53 2002	48.6ck NA see .fan
98.0000	43.69	31.19	p	-1	101	V	Thu Feb 28 08:35:55 2002	19.6 ck
98.3040	53.48	40.99	p	101	122	V	Thu Feb 28 10:17:52 2002	98.3 ck, 32.77 ck
99.9000	49.02	36.60	p	101	122	V	Thu Feb 28 10:17:53 2002	33ck NA see .fan
100.0300	43.19	30.77	p	101	122	V	Thu Feb 28 10:17:55 2002	49.99 ck NA +50kho
117.9642	35.93	25.56	p	179	401	H	Thu Feb 28 09:14:57 2002	nb in bb
129.7170	34.75	24.56	p	179	401	H	Thu Feb 28 09:14:59 2002	bb
130.2440	29.88	19.67	p	179	401	H	Thu Feb 28 09:15:00 2002	bb
131.7510	36.36	26.09	p	179	401	H	Thu Feb 28 09:15:02 2002	bb
132.2791	40.74	30.49	p	180	101	V	Thu Feb 28 08:57:50 2002	bb
132.7651	37.46	27.23	p	81	162	V	Thu Feb 28 09:46:36 2002	bb
133.2871	38.82	28.62	p	180	101	V	Thu Feb 28 08:57:53 2002	bb
133.7671	34.44	24.26	p	270	401	H	Thu Feb 28 09:09:59 2002	bb
137.2000	31.79	21.43	p	-1	401	H	Thu Feb 28 08:44:14 2002	19.6 ck
137.6554	35.65	25.29	p	270	100	H	Thu Feb 28 09:28:13 2002	nb AMB?
145.7990	32.98	22.25	p	-1	101	V	Thu Feb 28 08:36:14 2002	nb
155.5185	30.52	19.38	p	-1	401	H	Thu Feb 28 08:44:19 2002	nb
157.2810	31.09	19.80	p	76	401	H	Thu Feb 28 09:57:51 2002	78.64 ck, 39.32 ck
159.9998	30.83	19.39	p	180	162	V	Thu Feb 28 08:53:36 2002	80. ck
170.0965	35.99	23.94	p	180	162	V	Thu Feb 28 08:53:37 2002	nb
176.9472	31.87	19.01	p	270	101	V	Thu Feb 28 09:01:53 2002	58.98 ck
177.0085	32.92	20.05	p	270	101	V	Thu Feb 28 09:01:55 2002	nb in bb
179.9991	34.99	22.08	p	-1	101	V	Thu Feb 28 08:36:24 2002	nb in bb
194.3962	34.19	21.45	p	101	122	V	Thu Feb 28 10:18:20 2002	48.6 ck
196.5450	32.39	19.88	p	-1	401	H	Thu Feb 28 08:44:30 2002	nb in bb
196.6128	34.56	22.06	p	180	162	V	Thu Feb 28 08:53:45 2002	196.6 ck, 98.3 ck, 32.77 ck
200.0013	34.77	22.70	p	-1	401	H	Thu Feb 28 08:44:33 2002	49.99 ck
200.0035	34.59	22.52	p	-1	401	H	Thu Feb 28 08:44:34 2002	nb
220.0010	33.22	21.80	p	-1	401	H	Thu Feb 28 08:44:35 2002	nb
236.0465	39.85	29.72	p	101	122	V	Thu Feb 28 10:18:28 2002	nb in bb
239.9960	33.47	23.72	q	91	101	V	Wed Feb 27 16:38:21 2002	.
243.0000	46.48	37.00	p	87	141	H	Thu Feb 28 09:37:41 2002	48.6 ck
249.9500	27.24	18.57	p	179	401	H	Thu Feb 28 09:15:34 2002	49.99 ck

EUT: RBS1127SR

Manufacturer: Ericsson

Tester: tom

Special ID: 020220-513

EUT level: prototyp, indoor chassis with door open

EUT information: tabletop, host xmit below G.P.

Test information is: 1.9.3.2 test program, 10M, 208/60 gr-1089 door open tests

Last sorted by frequency

Print filter is -350.00 dB to limit

Freq, MHz	I-val	Final	Sts	TT	Hght	Az	Time	Comment
250.0750	33.48	24.82	p	101	122	V	Thu Feb 28 10:04:45 2002	.
255.2511	27.76	19.22	p	180	162	V	Thu Feb 28 08:53:57 2002	nb
256.4730	30.07	21.47	p	179	401	H	Thu Feb 28 09:15:38 2002	nb
260.0010	30.51	21.72	p	180	162	V	Thu Feb 28 08:54:00 2002	nb
265.5587	32.77	23.99	p	270	101	V	Thu Feb 28 09:02:16 2002	bb
272.1586	41.69	33.07	p	81	162	V	Thu Feb 28 09:47:14 2002	nb
275.2080	34.87	26.38	p	87	141	H	Thu Feb 28 09:37:52 2002	nb in bb
280.0000	32.37	24.11	p	101	122	V	Thu Feb 28 10:04:55 2002	nb
291.5940	39.68	31.51	p	101	122	V	Thu Feb 28 10:18:45 2002	48.6 ck
294.9120	29.46	21.32	p	87	141	H	Thu Feb 28 09:37:56 2002	32.77 ck, 58.98 ck
299.9972	27.72	19.72	p	81	162	V	Thu Feb 28 09:47:21 2002	49.99 ck
299.9987	28.02	20.02	p	81	162	V	Thu Feb 28 09:47:22 2002	nb
311.0406	40.75	33.05	p	81	162	V	Thu Feb 28 09:47:24 2002	nb
315.8976	34.34	26.70	p	81	162	V	Thu Feb 28 09:47:25 2002	nb in bb
320.0000	29.80	22.35	p	270	101	V	Thu Feb 28 09:02:30 2002	80. ck
340.2000	30.63	23.83	p	87	141	H	Thu Feb 28 09:38:04 2002	48.6 ck
349.9202	32.07	25.73	p	87	141	H	Thu Feb 28 09:38:06 2002	49.99 ck
353.9742	30.06	24.08	p	270	101	V	Thu Feb 28 09:02:34 2002	nb
359.9996	28.71	22.83	p	101	122	V	Thu Feb 28 10:18:58 2002	nb
388.7994	45.00	39.61	p	87	141	H	Thu Feb 28 09:38:10 2002	48.6 ck
393.2140	41.62	36.44	p	270	101	V	Thu Feb 28 09:02:38 2002	nb in bb
400.0002	38.14	33.36	m	81	162	V	Thu Feb 28 09:44:46 2002	80. ck
427.6811	41.32	36.68	p	87	141	H	Thu Feb 28 09:38:14 2002	nb GPS?
437.4017	33.73	29.35	p	101	122	V	Thu Feb 28 10:05:17 2002	48.6 ck
440.0014	34.18	29.90	p	101	122	V	Thu Feb 28 10:05:19 2002	nb
452.8535	45.48	41.74	p	270	101	V	Thu Feb 28 09:02:45 2002	nb NA
480.0000	35.14	31.88	q	91	101	V	Wed Feb 27 16:39:37 2002	80. ck
486.0009	34.43	31.48	p	81	162	V	Thu Feb 28 09:48:09 2002	48.6 ck
510.3011	32.41	29.97	p	101	122	V	Thu Feb 28 10:19:12 2002	nb
534.5975	34.60	32.25	p	101	122	V	Thu Feb 28 10:05:26 2002	48.6 ck
544.3147	36.03	33.82	p	87	141	H	Thu Feb 28 09:38:25 2002	nb
558.8982	33.36	31.99	p	101	122	V	Thu Feb 28 10:05:28 2002	.
559.9993	30.57	29.26	p	87	141	H	Thu Feb 28 09:38:28 2002	nb
583.1952	39.13	37.77	p	76	401	H	Thu Feb 28 09:58:09 2002	48.6 ck
600.0562	35.22	34.11	p	101	122	V	Thu Feb 28 10:19:21 2002	nb
680.4000	31.07	31.44	p	87	141	H	Thu Feb 28 09:38:32 2002	48.6 ck
699.8373	30.98	31.30	p	87	141	H	Thu Feb 28 09:38:33 2002	49.99 ck
729.0031	33.74	34.54	p	87	141	H	Thu Feb 28 09:38:35 2002	48.6 ck
777.5941	29.83	31.35	p	87	141	H	Thu Feb 28 09:38:36 2002	48.6 ck
826.2000	27.91	30.69	p	87	141	H	Thu Feb 28 09:38:38 2002	48.6 ck
869.2207	28.93	30.85	p	270	101	V	Thu Feb 28 09:03:03 2002	nb in bb amb?
874.8000	31.13	33.07	p	76	401	H	Thu Feb 28 09:58:26 2002	48.6 ck
875.4060	60.51	62.50	p	180	100	H	Thu Feb 28 09:20:28 2002	FO front
875.6457	62.72	64.72	p	270	401	H	Thu Feb 28 09:11:25 2002	.

EUT: RBS1127SR

Manufacturer: Ericsson

Tester: tom

Special ID: 020220-513

EUT level: prototyp, indoor chassis with door open

EUT information: tabletop, host xmit below G.P.

Test information is: 1.9.3.2 test program, 10M, 208/60 gr-1089 door open tests

Last sorted by frequency

Print filter is -350.00 dB to limit

Freq, MHz	I-val	Final	Sts	TT	Hght	Az	Time	Comment
875.8946	62.01	64.03	p	270	401	H	Thu Feb 28 09:11:27 2002	FO
876.5160	61.91	63.95	p	270	401	H	Thu Feb 28 09:11:28 2002	fo REAR
878.9402	26.30	28.16	p	270	161	V	Thu Feb 28 09:07:04 2002	nb
923.4000	25.43	27.57	p	87	141	H	Thu Feb 28 09:38:49 2002	48.6 ck
943.1707	28.02	30.93	p	87	141	H	Thu Feb 28 09:38:51 2002	nb
971.9941	32.85	36.66	p	87	141	H	Thu Feb 28 09:38:52 2002	97.2 ck
983.0411	35.18	38.86	m	87	140	H	Thu Feb 28 09:34:32 2002	196.6 ck

Short Rack GR1089 Doors Open with FCC Limit Line 1-10GH

Criterion Technology

Date: Wed Feb 27 15:00:30 2002

EUT: A8S1127SR

Manufacturer: Ericsson

SPID: 020220-513

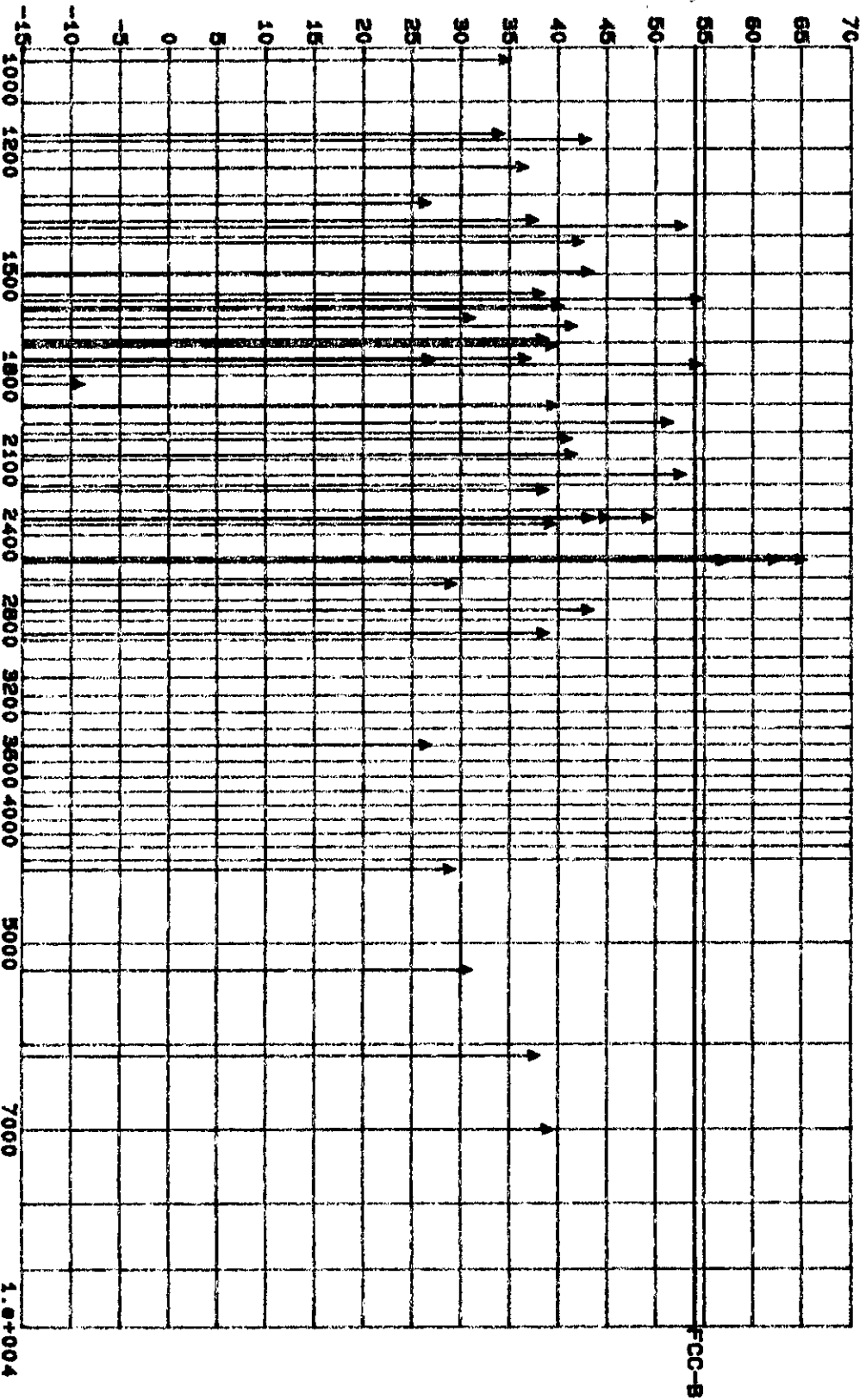
Tester: tom

EUT Level: using indoor cabinet with doors open for 1089 tests to 10 GHz

EUT Information: laptop, host xmit below 5.P.

Test Information: 1.9.3.2 test program 3K, 208V/50Hz, GR1089 door open

Test Results (in dBuV/m)



Frequency in MHz

EUT: RBS1127SR

Manufacturer: Ericsson

Tester: tom

Special ID: 020220-513

EUT level: using indoor cabinet with doors open for 1089 tests to 10 GHz

EUT information: tabletop, host xmit below G.P.

Test information is: 1.9.3.2 test program 3M, 208v/60Hz, GR1089 door open

Last sorted by frequency

Print filter is -350.00 dB to limit

Freq, MHz	I-val	Final	Sts	TT	Hght	Az	Time	Comment
876.5000	0.00	-200.00	s	0	0	b	876.5 ck
1022.2130	50.81	34.50	a	266	163	H	Wed Feb 27 11:10:53 2002	.
1166.4003	48.89	33.83	a	91	103	H	Wed Feb 27 15:51:02 2002	.
1179.6601	57.67	42.71	a	320	158	H	Wed Feb 27 11:15:23 2002	.
1238.6292	50.73	36.24	a	91	103	H	Wed Feb 27 15:50:12 2002	.
1320.0018	39.98	26.25	a	44	112	H	Wed Feb 27 14:57:41 2002	.
1360.7958	50.66	37.25	a	91	103	V	Wed Feb 27 15:53:47 2002	.
1376.2586	65.87	52.55	a	82	98	V	Wed Feb 27 15:15:49 2002	.
1415.5755	54.97	41.99	a	96	168	V	Wed Feb 27 11:25:37 2002	.
1494.2204	55.27	42.97	a	91	103	V	Wed Feb 27 15:54:29 2002	.
1555.1968	49.54	37.96	a	91	103	V	Wed Feb 27 15:54:51 2002	.
1572.8658	65.69	54.19	a	92	101	H	Wed Feb 27 15:02:53 2002	.
1592.5267	51.33	39.93	a	91	103	H	Wed Feb 27 15:48:44 2002	.
1626.9900	41.85	30.80	a	81	142	H	Wed Feb 27 14:41:33 2002	.
1651.5078	52.14	41.31	a	91	103	H	Wed Feb 27 15:48:03 2002	.
1690.8308	48.85	38.35	a	91	103	H	Wed Feb 27 15:47:45 2002	.
1710.4948	49.49	39.22	a	91	103	H	Wed Feb 27 15:47:29 2002	.
1749.5964	46.38	36.51	a	91	103	V	Wed Feb 27 15:55:50 2002	.
1751.4484	36.51	26.66	a	163	138	H	Wed Feb 27 14:43:23 2002	.
1752.0400	36.52	26.68	a	165	129	H	Wed Feb 27 14:44:00 2002	876.5 ck
1769.4735	63.76	54.07	a	86	117	H	Wed Feb 27 11:54:36 2002	.
1828.4369	0.00	-9.23	a	91	103	H	Wed Feb 27 15:46:45 2002	.
1907.0995	47.65	39.43	a	91	103	H	Wed Feb 27 15:46:25 2002	.
1966.0808	58.20	51.17	a	88	116	H	Wed Feb 27 11:59:08 2002	.
2025.0619	46.66	40.78	a	91	103	H	Wed Feb 27 15:45:49 2002	.
2084.0508	44.78	41.26	a	91	103	H	Wed Feb 27 15:45:29 2002	.
2162.6902	53.12	52.44	a	61	126	V	Wed Feb 27 15:35:34 2002	.
2221.6668	42.11	38.35	a	91	103	H	Wed Feb 27 15:44:50 2002	.
2334.8802	50.05	44.72	a	94	123	H	Wed Feb 27 14:47:23 2002	.
2335.0965	54.45	49.12	a	90	125	H	Wed Feb 27 12:10:43 2002	.
2335.8833	48.33	43.00	a	88	138	V	Wed Feb 27 15:39:57 2002	.
2359.2974	44.49	39.14	a	91	103	H	Wed Feb 27 15:44:25 2002	.
2518.7133	70.76	64.88	a	72	107	H	Wed Feb 27 15:05:55 2002	.
2518.9818	67.96	62.08	a	97	107	H	Wed Feb 27 15:18:44 2002	.
2519.2927	62.56	56.68	a	61	126	V	Wed Feb 27 15:36:03 2002	.
2519.6529	62.85	56.97	a	91	103	V	Wed Feb 27 15:56:51 2002	.
2627.9200	34.35	28.91	a	155	135	H	Wed Feb 27 14:35:18 2002	.
2752.5139	48.21	42.99	a	73	117	H	Wed Feb 27 15:23:03 2002	.
2870.4784	43.36	38.42	a	91	103	H	Wed Feb 27 15:43:18 2002	.
3503.6600	30.85	26.32	a	138	155	H	Wed Feb 27 14:49:01 2002	876.5 ck
4379.7400	29.92	28.84	a	159	133	H	Wed Feb 27 14:49:53 2002	876.5 ck
5255.5800	29.00	30.57	a	159	133	H	Wed Feb 27 14:50:16 2002	876.5 ck
6131.8200	34.68	37.54	a	156	134	H	Wed Feb 27 14:50:57 2002	876.5 ck
7007.5600	34.42	38.89	a	156	131	H	Wed Feb 27 14:51:27 2002	876.5 ck

EUT: RBS1127SR

Manufacturer: Ericsson

Tester: tom

Special ID: 020220-513

EUT level: using indoor cabinet with doors open for 1089 tests to 10 GHz

EUT information: tabletop, host xmit below G.P.

Test information is: 1.9.3.2 test program 3M, 208v/60Hz, GR1089 door open

Last sorted by frequency

Print filter is -200.00 dB to limit

Freq, MHz	Value	Sts	FCC-B	TT	Hght	Az	Comment
1022.2130	34.50	a	-19.48	266	163	H	.
1166.4003	33.83	a	-20.15	91	103	H	.
1179.6601	42.71	a	-11.27	320	158	H	.
1238.6292	36.24	a	-17.74	91	103	H	.
1320.0018	26.25	a	-27.73	44	112	H	.
1360.7958	37.25	a	-16.73	91	103	V	.
1376.2586	52.55	a	-1.43	82	98	V	.
1415.5755	41.99	a	-11.99	96	168	V	.
1494.2204	42.97	a	-11.01	91	103	V	.
1555.1968	37.96	a	-16.02	91	103	V	.
1572.8658	54.19	a	* 0.21	92	101	H	.
1592.5267	39.93	a	-14.05	91	103	H	.
1626.9900	30.80	a	-23.18	81	142	H	.
1651.5078	41.31	a	-12.67	91	103	H	.
1690.8308	38.35	a	-15.63	91	103	H	.
1710.4948	39.22	a	-14.76	91	103	H	.
1749.5964	36.51	a	-17.47	91	103	V	.
1751.4484	26.66	a	-27.32	163	138	H	.
1752.0400	26.68	a	-27.30	165	129	H	876.5 ck
1769.4735	54.07	a	* 0.09	86	117	H	.
1828.4369	-9.23	a	-63.21	91	103	H	.
1907.0995	39.43	a	-14.55	91	103	H	.
1966.0808	51.17	a	-2.81	88	116	H	.
2025.0619	40.78	a	-13.20	91	103	H	.
2084.0508	41.26	a	-12.72	91	103	H	.
2162.6902	52.44	a	-1.54	61	126	V	.
2221.6668	38.35	a	-15.63	91	103	H	.
2334.8802	44.72	a	-9.26	94	123	H	.
2335.0965	49.12	a	-4.86	90	125	H	.
2335.8833	43.00	a	-10.98	88	138	V	.
2359.2974	39.14	a	-14.84	91	103	H	.
2518.7133	64.88	a	* 10.90	72	107	H	.
2518.9818	62.08	a	* 8.10	97	107	H	.
2519.2927	56.68	a	* 2.70	61	126	V	.
2519.6529	56.97	a	* 2.99	91	103	V	.
2627.9200	28.91	a	-25.07	155	135	H	.
2752.5139	42.99	a	-10.99	73	117	H	.
2870.4784	38.42	a	-15.56	91	103	H	.
3503.6600	26.32	a	-27.66	138	155	H	876.5 ck
4379.7400	28.84	a	-25.14	159	133	H	876.5 ck
5255.5800	30.57	a	-23.41	159	133	H	876.5 ck
6131.8200	37.54	a	-16.44	156	134	H	876.5 ck
7007.5600	38.89	a	-15.09	156	131	H	876.5 ck

Print date: Wed Feb 27 16:01:44 2002

Intellistor OATS

EUT: RBS1127SR

Manufacturer: Ericsson

Tester: tom

Special ID: 020220-513

EUT level: using indoor cabinet with doors open for 1089 tests to 10 GHz

EUT information: tabletop, host xmit below G.P.

Test information is: 1.9.3.2 test program 3M, 208v/60Hz, GR1089 door open

Print filter is -200.00 dB to limit

Last sorted by frequency
Freq, MHz Value Sts

FCC-B

TT

Hght

Az

Comment

EUT: RBS1127SR

Manufacturer: Ericsson

Tester: tom

Special ID: 020220-513

EUT level: using indoor cabinet with doors open for 1089 tests to 10 GHz

EUT information: tabletop, host xmit below G.P.

Test information is: 1.9.3.2 test program 3M, 208v/60Hz, GR1089 door open

Last sorted by margin to limit FCC-B

Print filter is -200.00 dB to limit

Freq, MHz	Value	Sts	FCC-B	TT	Hght	Az	Comment
2518.7133	64.88	a	* 10.90	72	107	H	.
2518.9818	62.08	a	* 8.10	97	107	H	.
2519.6529	56.97	a	* 2.99	91	103	V	.
2519.2927	56.68	a	* 2.70	61	126	V	.
1572.8658	54.19	a	* 0.21	92	101	H	.
1769.4735	54.07	a	* 0.09	86	117	H	.
1376.2586	52.55	a	-1.43	82	98	V	.
2162.6902	52.44	a	-1.54	61	126	V	.
1966.0808	51.17	a	-2.81	88	116	H	.
2335.0965	49.12	a	-4.86	90	125	H	.
2334.8802	44.72	a	-9.26	94	123	H	.
2335.8833	43.00	a	-10.98	88	138	V	.
2752.5139	42.99	a	-10.99	73	117	H	.
1494.2204	42.97	a	-11.01	91	103	V	.
1179.6601	42.71	a	-11.27	320	158	H	.
1415.5755	41.99	a	-11.99	96	168	V	.
1651.5078	41.31	a	-12.67	91	103	H	.
2084.0508	41.26	a	-12.72	91	103	H	.
2025.0619	40.78	a	-13.20	91	103	H	.
1592.5267	39.93	a	-14.05	91	103	H	.
1907.0995	39.43	a	-14.55	91	103	H	.
1710.4948	39.22	a	-14.76	91	103	H	.
2359.2974	39.14	a	-14.84	91	103	H	.
7007.5600	38.89	a	-15.09	156	131	H	876.5 ck
2870.4784	38.42	a	-15.56	91	103	H	.
2221.6668	38.35	a	-15.63	91	103	H	.
1690.8308	38.35	a	-15.63	91	103	H	.
1555.1968	37.96	a	-16.02	91	103	V	.
6131.8200	37.54	a	-16.44	156	134	H	876.5 ck
1360.7958	37.25	a	-16.73	91	103	V	.
1749.5964	36.51	a	-17.47	91	103	V	.
1238.6292	36.24	a	-17.74	91	103	H	.
1022.2130	34.50	a	-19.48	266	163	H	.
1166.4003	33.83	a	-20.15	91	103	H	.
1626.9900	30.80	a	-23.18	81	142	H	.
5255.5800	30.57	a	-23.41	159	133	H	876.5 ck
2627.9200	28.91	a	-25.07	155	135	H	.
4379.7400	28.84	a	-25.14	159	133	H	876.5 ck
1752.0400	26.68	a	-27.30	165	129	H	876.5 ck
1751.4484	26.66	a	-27.32	163	138	H	.
3503.6600	26.32	a	-27.66	138	155	H	876.5 ck
1320.0018	26.25	a	-27.73	44	112	H	.
1828.4369	-9.23	a	-63.21	91	103	H	.

Intellistor OATS

Print date: Wed Feb 27 16:01:43 2002

EUT: RBS1127SR

Manufacturer: Ericsson

Tester: tom Special ID: 020220-513

EUT level: using indoor cabinet with doors open for 1089 tests to 10 GHz

EUT information: tabletop, host xmit below G.P.

Test information is: 1.9.3.2 test program 3M, 208v/60Hz, GR1089 door open

Last sorted by margin to limit FCC-B

Print filter is -200.00 dB to limit

Freq, MHz	Value	Sts	FCC-B	TT	Hght	Az	Comment
-----------	-------	-----	-------	----	------	----	---------

CAN DATA

Heatexchanger with all modification

WEEPER REWEAVED, GROUNDWATER INSULATION, GRS SURVEILLANCE

Criterion Technology

Date: Thu Feb 28 14:50:05 2002

EUT: HBS1127

Manufacturer: ERICSSON

Tester: NE

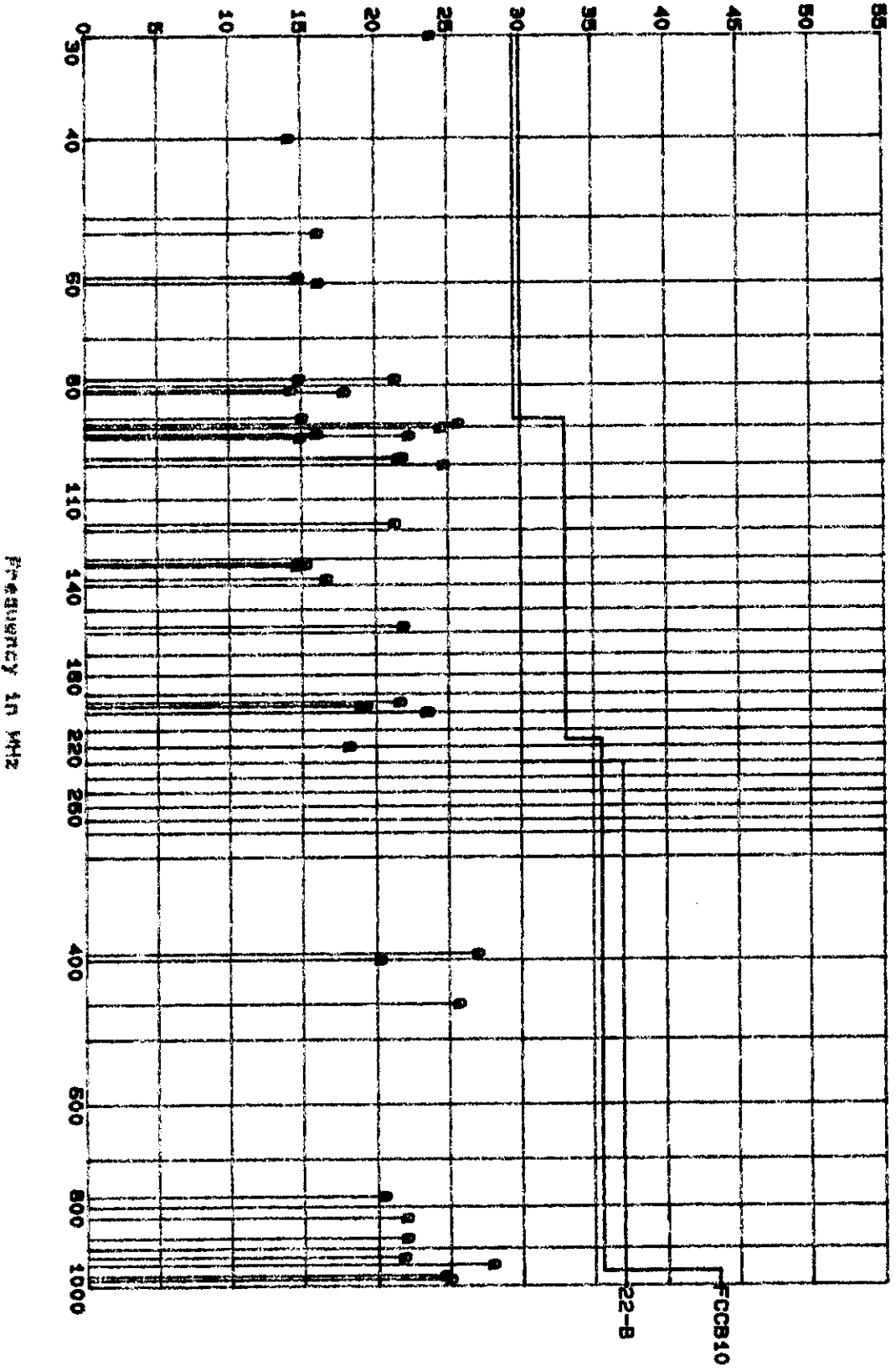
SPID: 020220-013

EUT Level: proto

EUT Information: tablator, host write below 8.P.

Test Information: 1.0.3.2 test program, 10M, 208V/20MHz, FCC Part 15 Class B

Test Results (in dBV/m)



EUT: RBS1127

Manufacturer: Ericsson

Tester: ws

Special ID: 020220-513

EUT level: proto

EUT information: tabletop, host xmit below G.P.

Test information is: 1.9.3.2 test program, 10M, 208V/60Hz, FCC Part 15 Class B

Last sorted by margin to limit FCCB10 w/ I-sort

Print filter is -15.40 dB to limit

Freq, MHz	Value	Sts	FCCB10	22-B	TT	Hght	Az	Comment
30.0000	23.90	q	-5.64	-6.10	0	100	V	5. ck
89.1991	25.77	q	-7.29	-4.23	0	100	V	bb/nb NA
943.1765	27.97	q	-7.59	-9.03	0	100	V	nb
78.6432	21.40	q	-8.14	-8.60	90	161	V	78.64 ck, 39.32 ck
100.0300	24.72	q	-8.34	-5.28	0	100	V	49.99 ck NA +50kho
90.2249	24.50	q	-8.56	-5.50	0	100	V	bb/nb NA
393.2140	26.99	q	-8.57	-10.01	90	100	H	nb in bb
200.0035	23.61	q	-9.45	-6.39	0	100	V	nb
199.9994	23.47	q	-9.59	-6.53	0	100	V	49.99 ck
452.8535	25.71	q	-9.85	-11.29	0	100	V	nb NA
92.2271	22.33	q	-10.73	-7.67	90	161	V	bb/nb NA
157.2810	21.90	q	-11.16	-8.10	90	161	V	78.64 ck, 39.32 ck
98.0000	21.86	q	-11.20	-8.14	0	100	V	19.6 ck
194.3970	21.66	q	-11.40	-8.34	0	100	V	48.6 ck
98.3040	21.58	q	-11.48	-8.42	0	100	V	98.3 ck, 32.77 ck
81.6066	17.94	q	-11.60	-12.06	90	161	V	bb
117.9642	21.33	q	-11.73	-8.67	0	100	V	nb in bb
59.9970	16.19	q	-13.35	-13.81	90	161	V	nb in bb
52.2040	16.17	q	-13.37	-13.83	90	161	V	bb
874.8000	22.02	q	-13.54	-14.98	90	161	V	48.6 ck
826.2000	22.00	q	-13.56	-15.00	90	161	V	48.6 ck
196.5450	19.31	q	-13.75	-10.69	0	100	V	nb in bb
923.4000	21.80	q	-13.76	-15.20	0	100	V	48.6 ck
196.6080	19.00	q	-14.06	-11.00	0	100	V	196.6 ck, 98.3 ck, 32.77 ck
87.6763	15.07	q	-14.47	-14.93	0	100	V	bb/nb NA
78.5555	14.86	q	-14.68	-15.14	90	161	V	bb
59.0180	14.84	q	-14.70	-15.16	90	161	V	58.98 ck
59.0130	14.80	q	-14.74	-15.20	90	161	V	nb
777.5941	20.46	q	-15.10	-16.54	90	161	V	48.6 ck
81.0974	14.35	q	-15.19	-15.65	0	100	V	bb
400.0009	20.24	q	-15.32	-16.76	0	401	H	80. ck
40.0000	14.19	q	-15.35	-15.81	90	161	V	5. ck
137.6554	16.68	q	-16.38	-13.32	0	100	V	nb AMB?
91.7290	16.08	q	-16.98	-13.92	0	100	V	bb/nb NA
220.0010	18.18	q	-17.38	-11.82	0	100	V	nb
132.2791	15.29	q	-17.77	-14.71	0	100	V	bb
92.7491	14.93	q	-18.13	-15.07	90	161	V	bb/nb
131.7510	14.74	q	-18.32	-15.26	0	100	V	bb
132.7651	14.68	q	-18.38	-15.32	0	100	V	bb
983.0386	25.01	q	-18.51	-11.99	90	161	V	196.6 ck
971.9885	24.65	q	-18.87	-12.35	90	161	V	97.2 ck

Conducted emissions looking @ 1 Supply

Criterion Tech Conducted Emissions

28. Feb 02 14:42

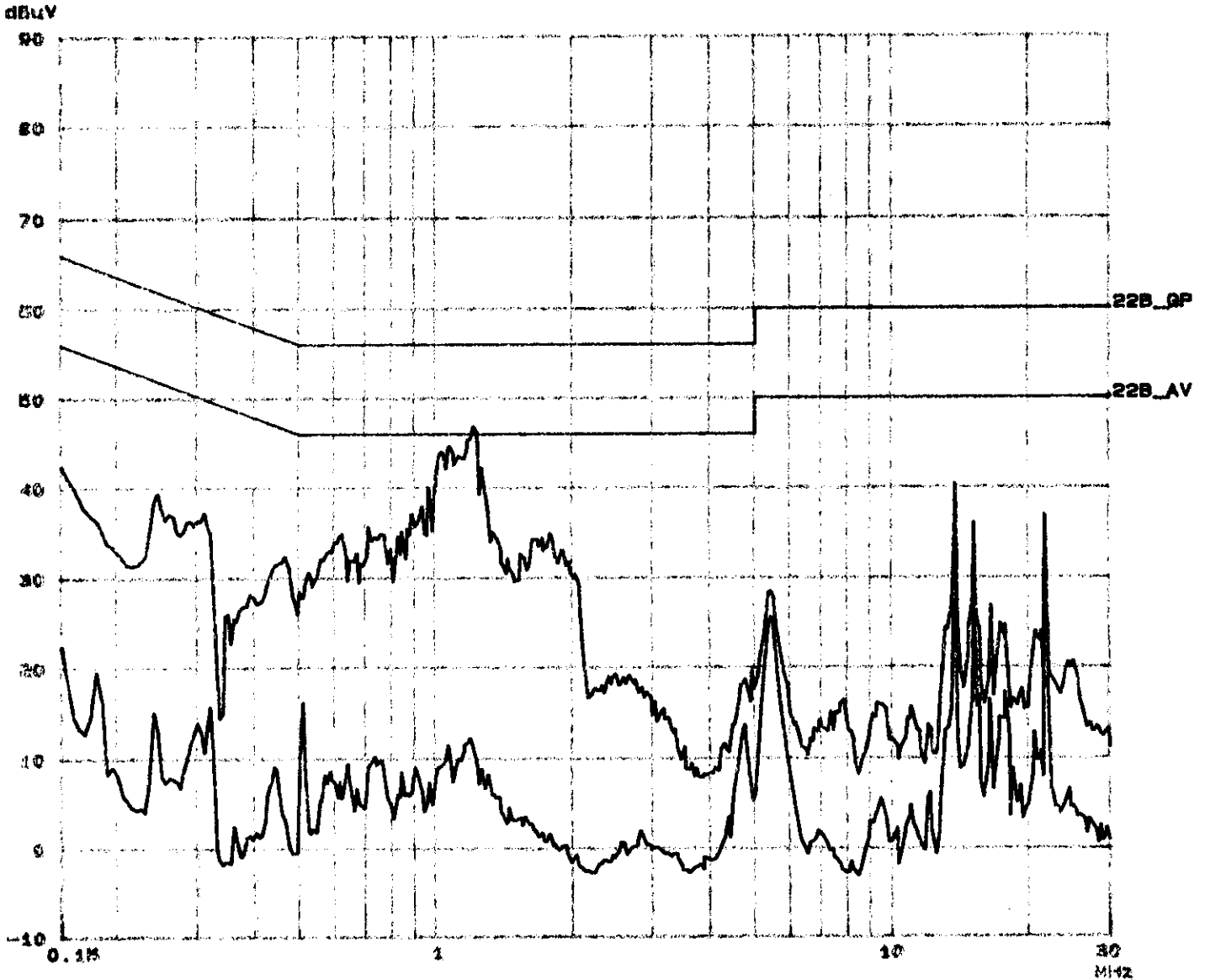
EUT: R88-1127 with inside chassis
 Manuf: Ericsson
 Op Cond: Normal
 Operator: ton
 Test Spec: C22 Class B
 Comment: 20B/60Hz L1 on pre L1 and N final
 Both Power supplies *measuring Left*

Scan Settings (1 Range)

Frequencies			Receiver Settings					
Start	Stop	Step	IF BW	Detector	Hi-Time	Atten	Preamp	OpPwr
150k	30M	5K	10k	PK+AV	100ms	AUTO	LN	OFF

Final Measurement: x GP / + AV
 Noise Time: 1 s
 Subranges: 20
 Acc Margin: 6dB

Transducer No. 1
 Start 10k
 Stop 30M
 Name SR_x3dB
 LISN



Criterion Tech
Conducted Emissions

28. Feb 02 14:42

EUT: RBS-1127 with inside chassis
Manuf: Ericsson
Op Cond: Normal
Operator: tm
Test Spec: C22 Class B
Comment: 200/50Hz L1 on pre L1 and N final
Both Power supplies

Scan Settings (1 Range)

Frequencies			Receiver Settings						
Start	Stop	Step	IF BW	Detector	H-Time	Atten	Preamp	OpRng	
180K	30M	5K	10K	PK+AV	100ms	AUTO	LN	OFF	60dB

Final Measurement Results:

no Results