

I will try and explain the model numbering scheme. We are using the following model number for filling **RBS1127XXAA##**

The XX can be either HE "heat Exchanger", SR "short Rack", TR "tall rack

The AA can be either AC or DC Input

The ## can be either 24 or -48

As you can see in the pictures below, the RF sections from OJYKAG 7 & 8 are not part of the assembly, but if we place the Main section in the TR "tall rack" we will place the RF section inside the rack.

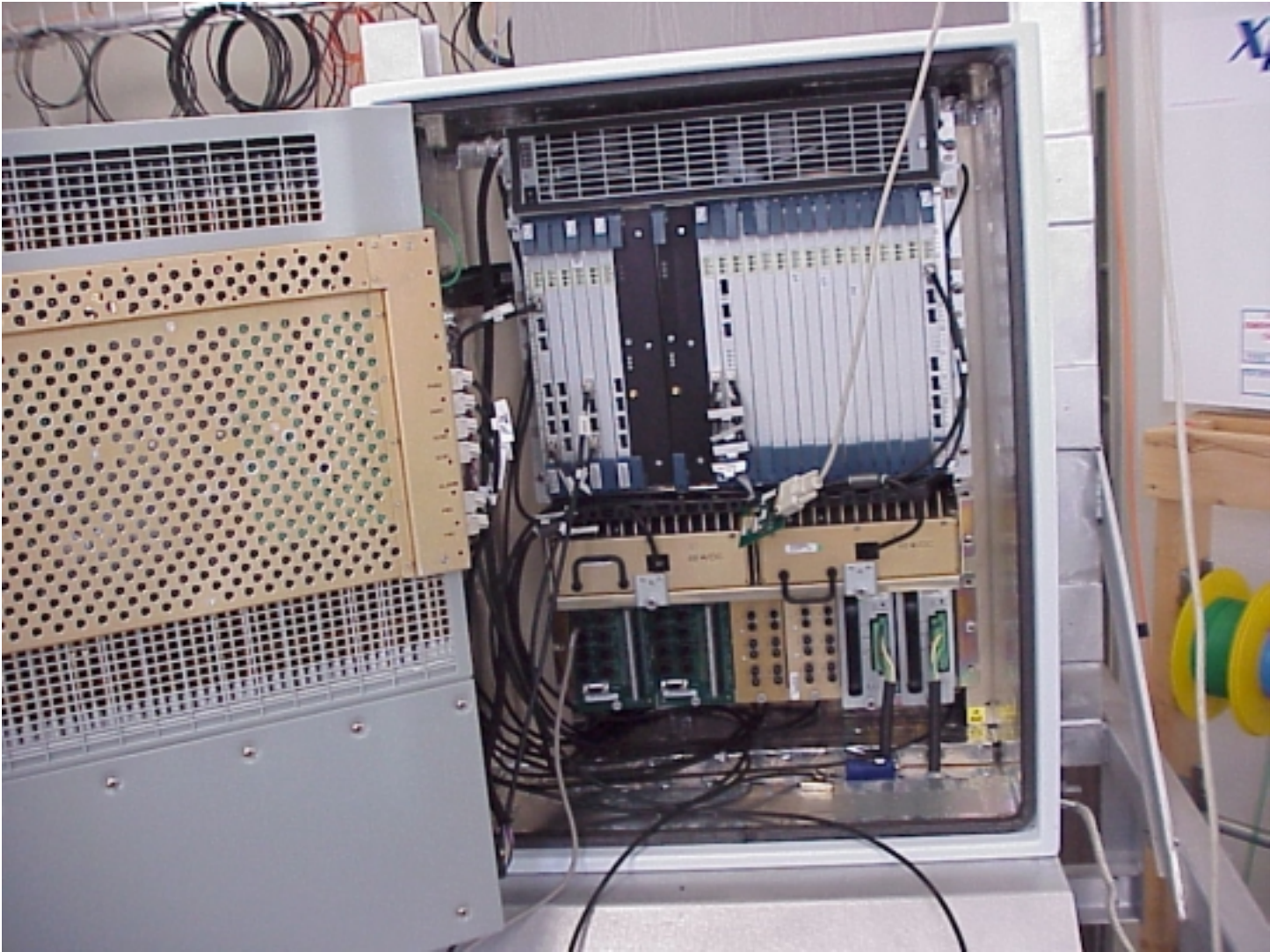
As it stands today the RF sections that have FCC approval are labeled as RBS1107/RBS1127, since there is absolutely no change in the design of the RF section.

The RF section will change this summer in a cost reduction effort to remove the processor from the RF section to the Main Section at this point the RF Section will be labeled as an RBS1127 Remote. A RBS1127 Remote is not backward compatible into the RBS1107 Main, since the RBS1107 main does not house a processor.

Our FCC FRN# is 0004998035.



This is our new Main Section, it can run on 220Vac, 24VDC or -48VDC. This rack is called the short rack and is for indoor use only. Model Number RBS1127SRAC, or it could be called the RBS1127SRDC24 or the RBS1127SRDC-48.....

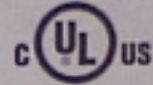


This is the Same Main Section in our Heat Exchanger, it run's on only 220Vac. Model Number RBS1127HEAC



The old RBS1107 Main Section, Which at one point had both FCC ID# OJYKAG7 and OJYKAG8.

MODEL: RBS 1127SRAC  
RATING: 200-240 V ~ ; 50-60 Hz; 5 A



LISTED  
I.T.E.  
E194633

SUITABLE FOR OUTDOOR USE



Código de Homologação

113701-AAE0062

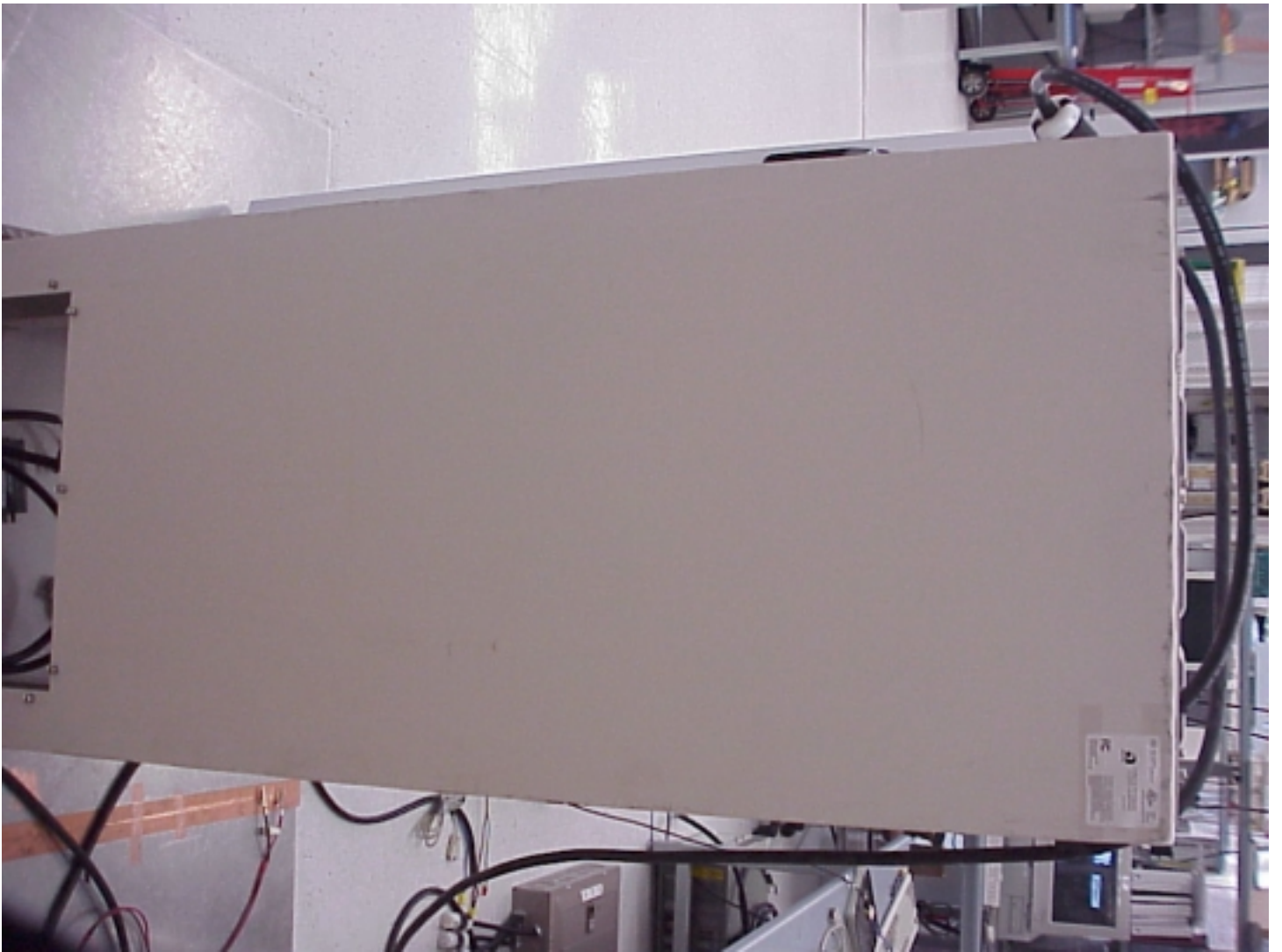
SVAB 22256/2



Tested to comply with  
FCC standards  
FOR HOME OR OFFICE USE

This device complies with part 15 of the  
FCC Rules. Operation is subject to the  
following two conditions: (1) This device  
may not cause harmful interference, and  
(2) this device must accept any  
interference received, including  
interference that may cause undesired  
operation.

RBS1127 Main Short Rack Label



RBS1127 Main Short Rack Label, on back of the rack.