



©2017 DESIGNED BY PLAYSTEM EDUCATION LIMITED, LONDON.  
WEBSITE: WWW.PLAYSTEM.COM EMAIL: INFO@PLAYSTEM.COM ADDRESS: SUITE 35 - 36 THE DESIGNWORKS,  
PARK PARADE, LONDON, NW10 4HT. MANUFACTURED BY HANGZHOU ZT MODEL COMPANY LIMITED. ADDRESS: NO 6  
MINGDE RD., PUYAN, BINJIANG, HANGZHOU, CHINA.

PLAY • READ • INSPIRE

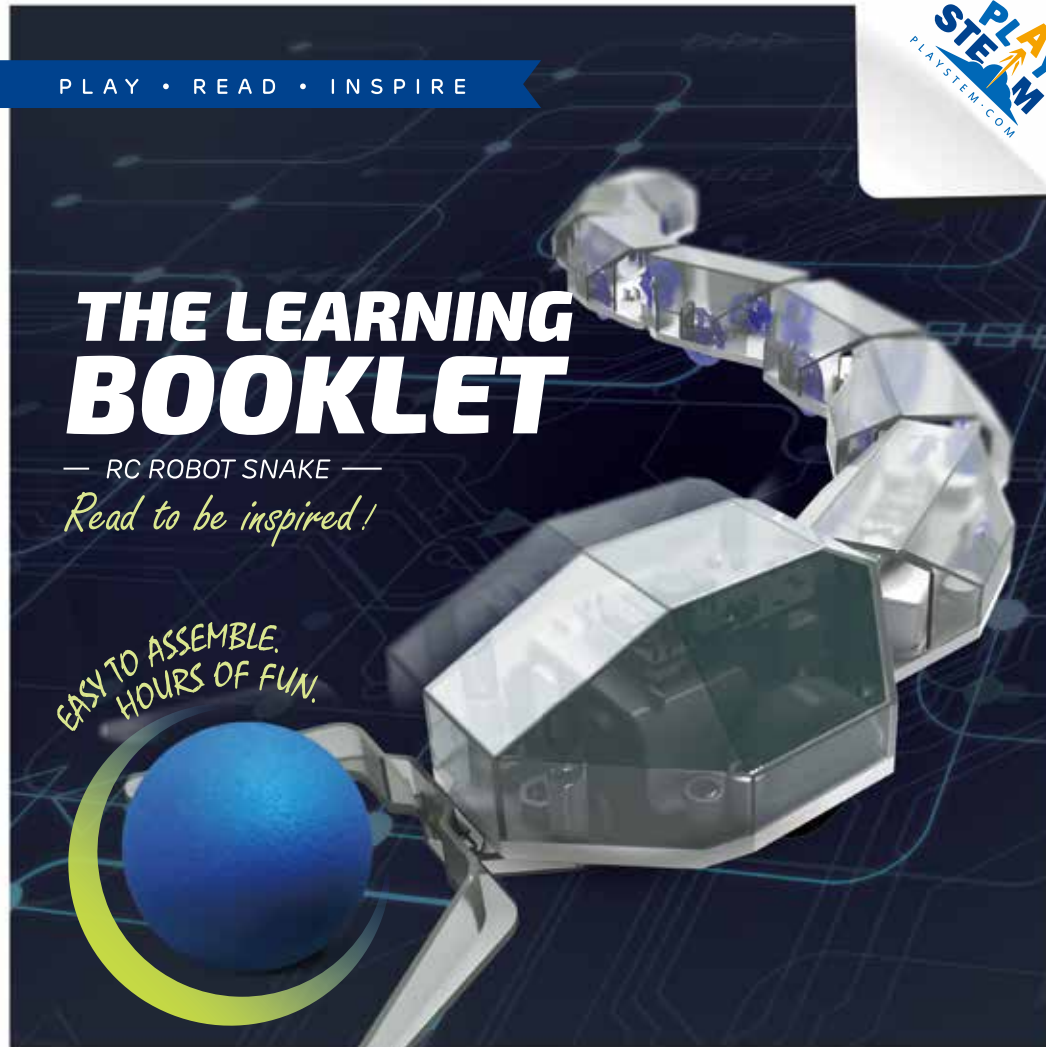


# THE LEARNING BOOKLET

— RC ROBOT SNAKE —

*Read to be inspired!*

*EASY TO ASSEMBLE.  
HOURS OF FUN.*





## TABLE OF CONTENTS

Warning Message	01
Package Contents	05
Installation Instructions	08
Activities	17
Fun Fact	27

# 1 | WARNING MESSAGE



## WARNING MESSAGE

### GENERAL WARNING

*Before you begin, please read through the instructions together with your children. Make sure you understand the safety messages. Please keep the packaging and instructions, as they contain important information.*

**Not suitable for children under 3 years. Small parts. Small ball. Choking hazard.**

*Children should have parental supervision when assembling the product.*

*Water and rain will damage the electronic components.*

*Please clean the product with a clean cloth when necessary.*

*Make sure to remove the batteries from the battery compartment before cleaning.*

**This toy produces flashes that may trigger epilepsy in sensitized individuals.**

**Heating parts - Do not touch.**

### OTHER WARNINGS

#### **Using a screwdriver**

*You must always be supervised by an adult when using a screwdriver.*

*The metal may have sharp edges that can cause injury.*

#### **Using batteries**

- Do not charge non-rechargeable batteries;
- Do not mix different types of batteries or new and used batteries;
- Insert batteries with correct polarities;
- Remove exhausted batteries from the toy;
- Do not short-circuit supply terminals;
- Remove rechargeable batteries from the toy before charging;
- Charge rechargeable batteries under adult supervision only.
- Do not use rechargeable batteries.

 Cement floors may wear out the wheels quickly.

## FCC INFORMATION

This device complies with Part 15 of the FCC Rules. Operation is subject to the following two conditions: (1) this device may not cause harmful interference, and (2) this device must accept any interference received, including interference that may cause undesired operation.

Warning: Changes or modifications to this unit not expressly approved by the party responsible for compliance could void the user's authority to operate the equipment.

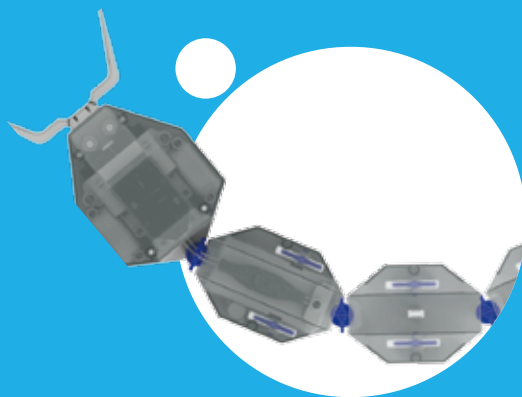
This equipment has been tested and found to comply with the limits for a Class B digital device, pursuant to part 15 of the FCC Rules. These limits are designed to provide reasonable protection against harmful interference in a residential installation.

This equipment generates, uses and can radiate radio frequency energy and, if not installed and used in accordance with the instructions, may cause harmful interference to radio communications. However, there is no guarantee that interference will not occur in a particular installation. If this equipment does cause harmful interference to radio or television reception, which can be determined by turning the equipment off and on, the user is encouraged to try to correct the interference by one or more of the following measures:

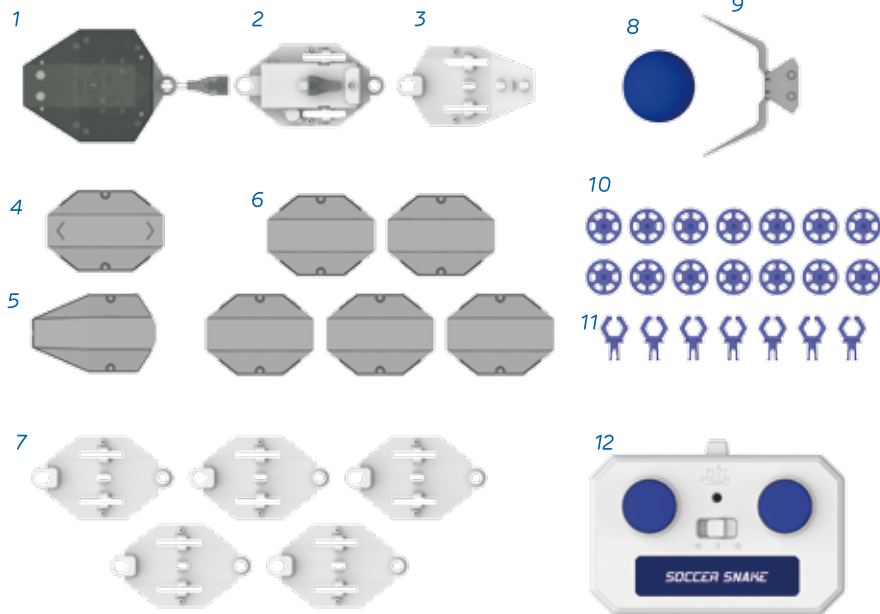
- Reorient or relocate the receiving antenna.
- Increase the separation between the equipment and receiver.
- Connect the equipment into an outlet on a circuit different from that to which the receiver is connected.
- Consult the dealer or an experienced radio/ TV technician for help.



# 2 | PACKAGE CONTENTS



## Package Contents



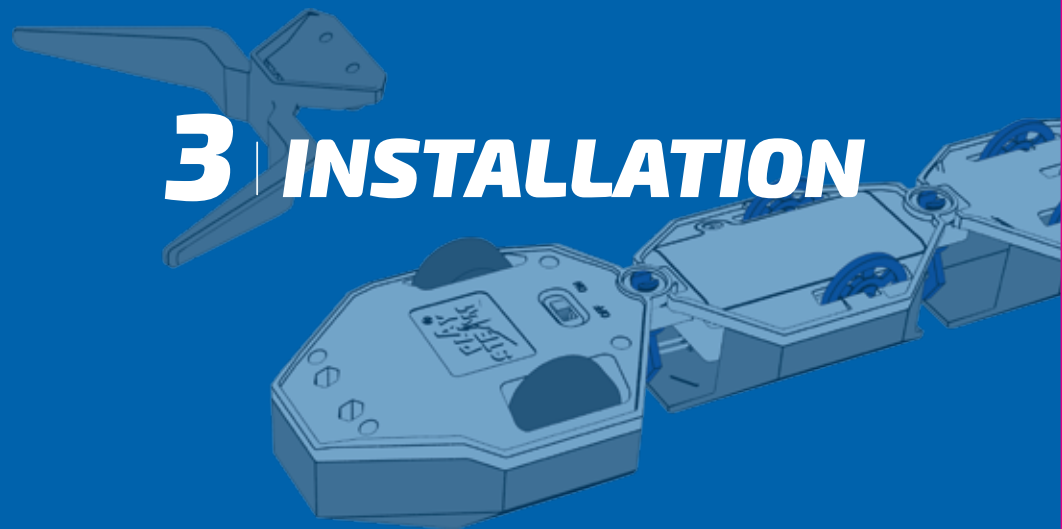
Serial	Name	Quantity	Serial	Name	Quantity
1	Snake Head	1	7	Snake Body Base	5
2	Battery Section	1	8	Ball	1
3	Snake Tail Base	1	9	Ball Pusher	1
4	Battery Section Cover	1	10	Pulley	14
5	Snake Tail Cover	1	11	Latches	7
6	Snake Body Cover	5	12	Remote Control	1

Necessary but not included



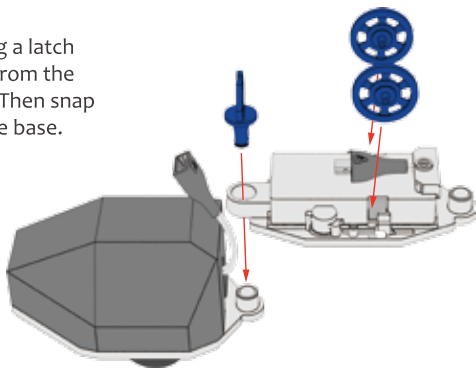
Batteries  
4 x AAA (1.5v)

## 3 | INSTALLATION

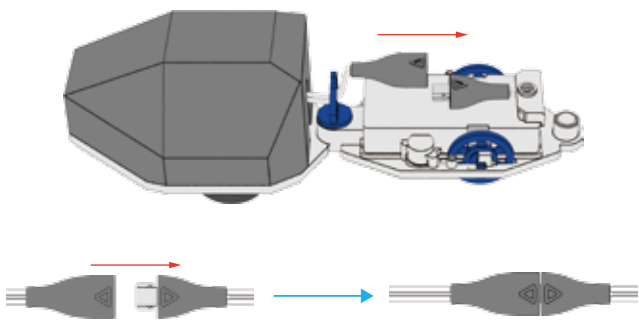


## Installation

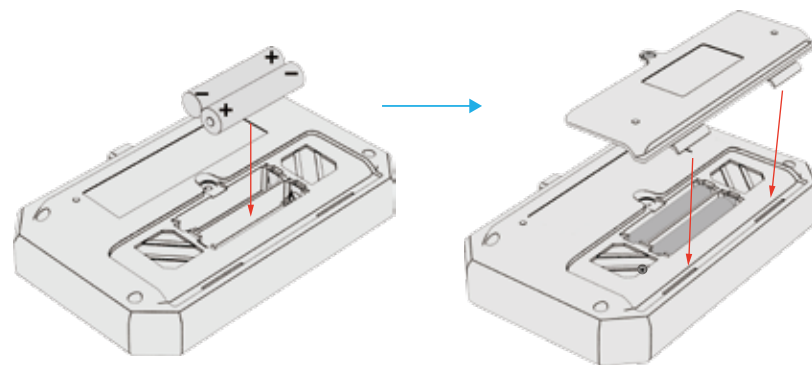
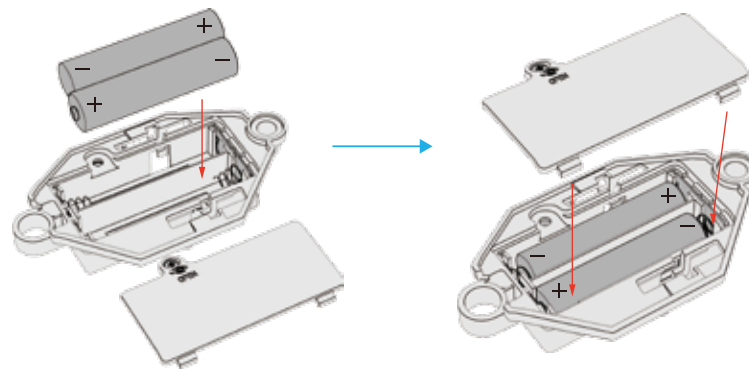
- 1 Connect the two sections using a latch and pass the motor port wire from the snake head through the latch. Then snap the pulleys into the slots on the base.



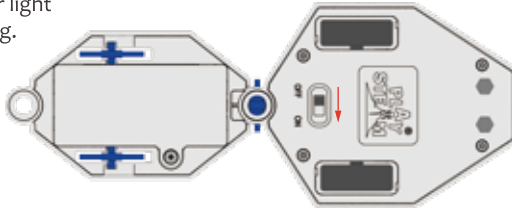
- 2 Plug the motor port in the power port from the battery section. Note that the triangles on the ports are on the same side.



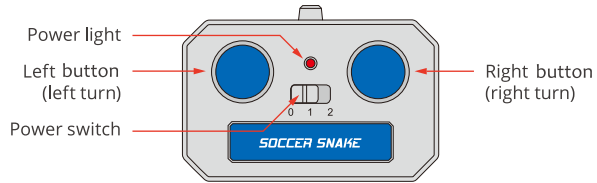
- 3 Open the battery compartments on battery section and remote control, install 2 AAA batteries in each according to the polarity sign, then close the compartments.



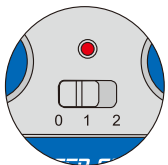
- 4 Test the snake. Turn the switch at the bottom of the snake on, the power light on the snake head will start flashing.



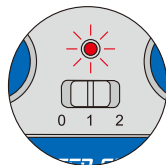
- 5 Turn the remote control to Level 1 or 2 (the power light will turn on). Press the right and left buttons. The snake head will start to glide around.



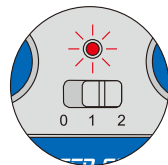
When holding down both the left and right buttons, the snake head glides forward.



Level 0 (Off)

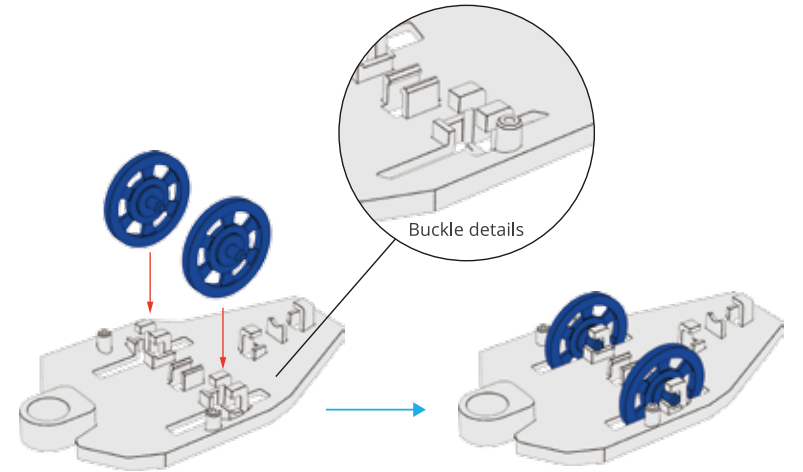


Level 1 (Normal)

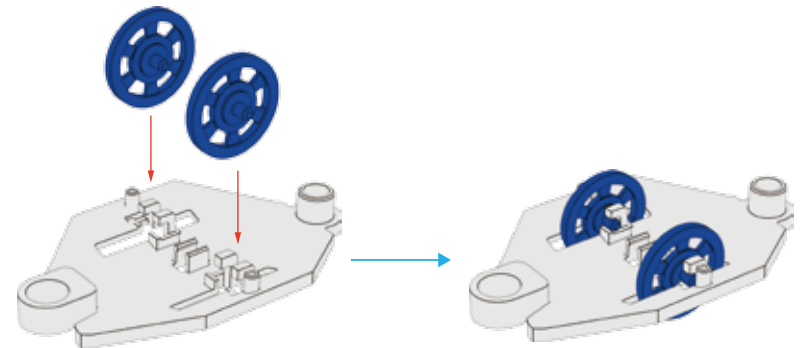


Level 2 (Fast)

- 6 Push each pulley into the pulley shaft buckles on the snake body base and the snake tail base.



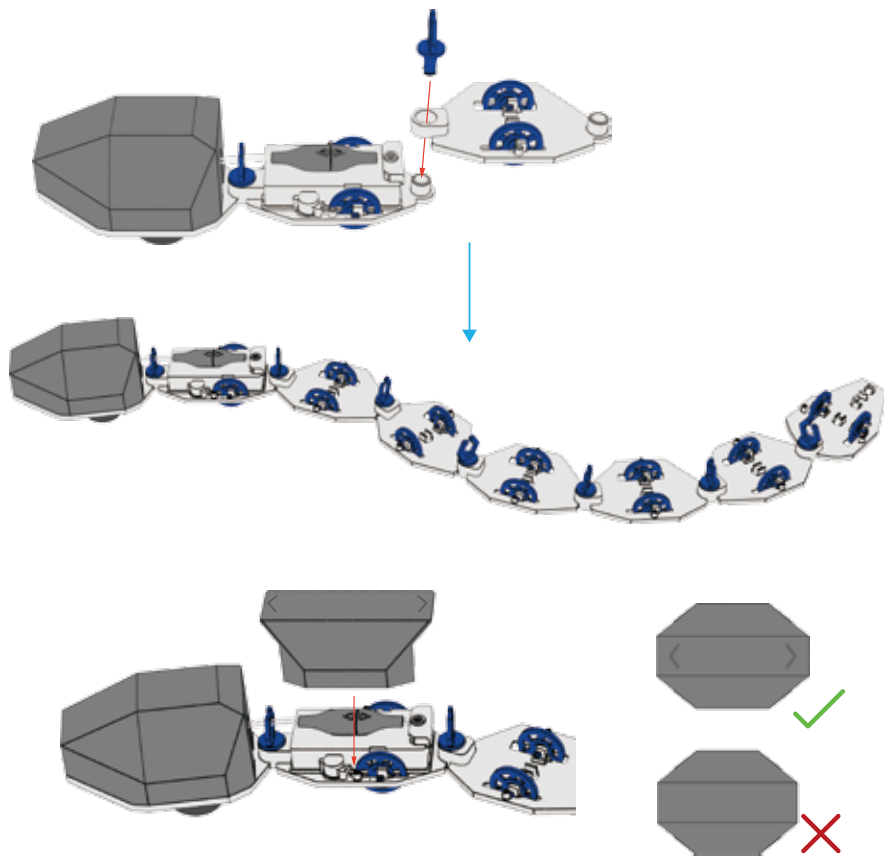
Snake tail base assembly \* 1



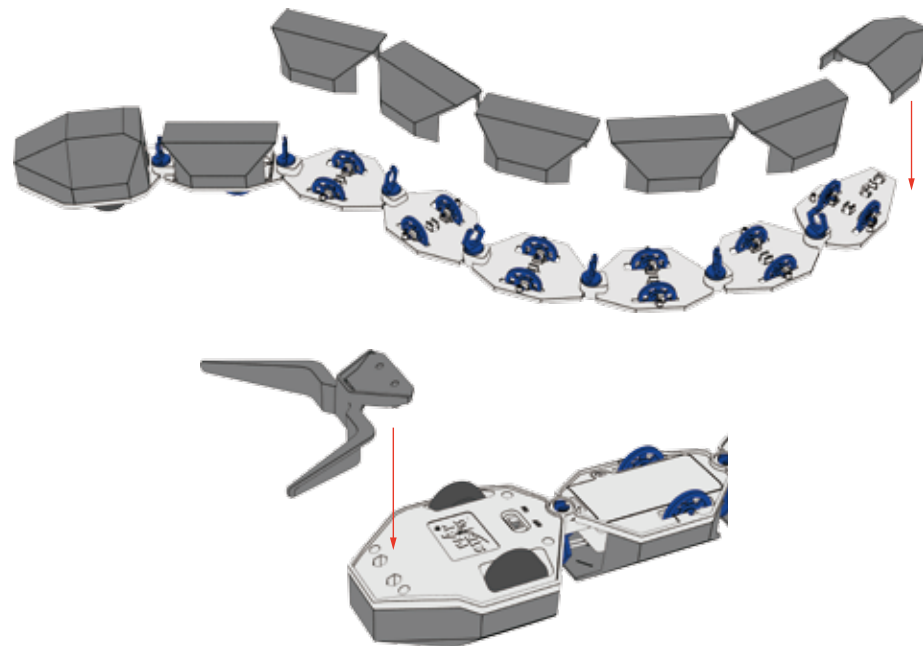
Snake body base assembly \* 5

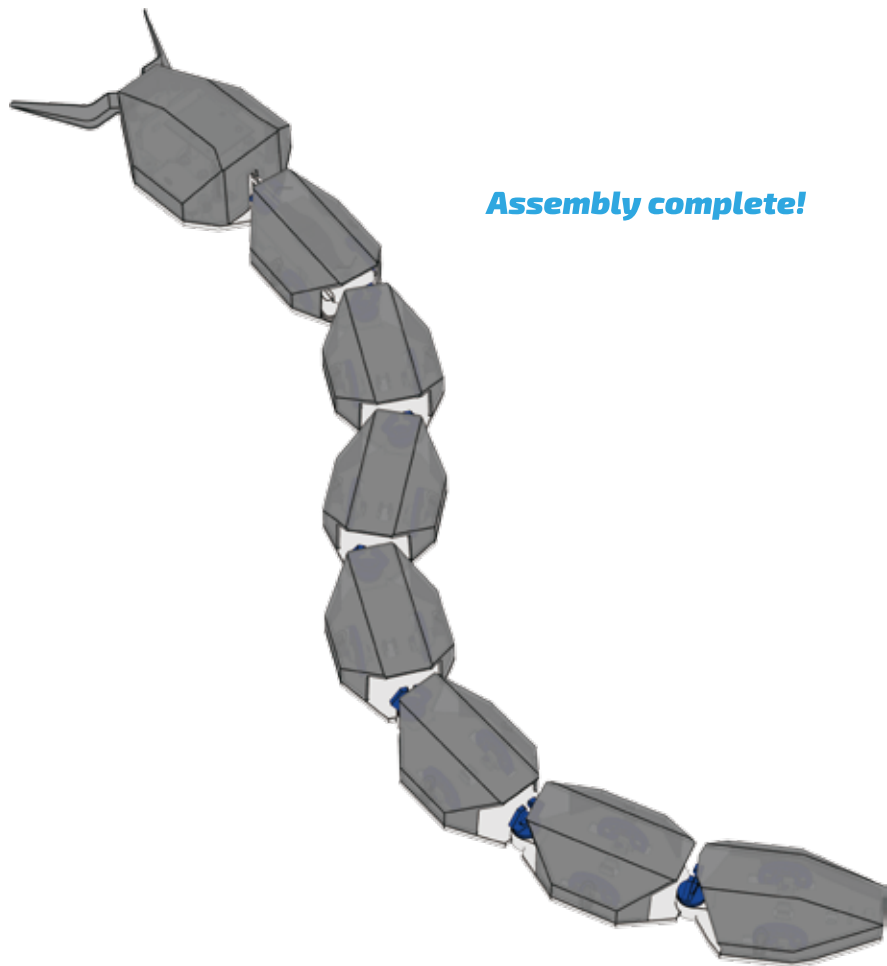


- 7 Connect all snake bodies and the snake tail using latches. Put on the battery section cover, note that it has 2 arrow on the top.



- 8 Buckle the snake body and tail covers to their corresponding bases, then insert the ball pusher to the bottom of the snake head base.





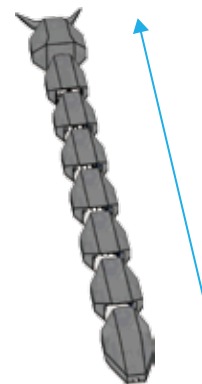
**Assembly complete!**

## Controlling the Snake

Before you start, make sure the batteries are installed and the compartments on the snake and the remote control are properly screwed.

### Glide forward

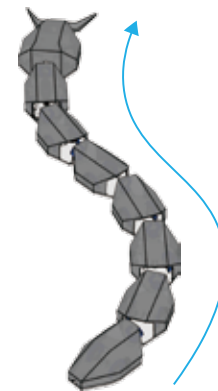
You can start with gliding forward. Push the two buttons on the remote together, the snake will go straight forward.



### Glide like a snake

Since the left and right buttons control left and right turning, if you push the two buttons alternatively, you will see the snake travels in “S” shape. It takes some practice to master your controlling skill. Take your time and play a prank on your fellows!

*Note: Some surfaces like thick carpet or lawn may interrupt the snake, try to avoid them when playing.*



# 4 | *ACTIVITIES*



## ***Do you know what BIONIC means?***

Bionics or “biologically inspired engineering” is the science of creating engineering systems inspired by nature.

The robot you have in your hands has a body inspired by snakes. As you may know, snakes, like many other aquatic and semi-aquatic animals, slither.

They have a flexible body that allows them to slither very fast. To be as agile as a snake, your snake robot has a body composed of several parts assembled together, giving an impression of flexibility.





## ***Train your Snake on free-kicks***

You can train your snake to take free-kicks.

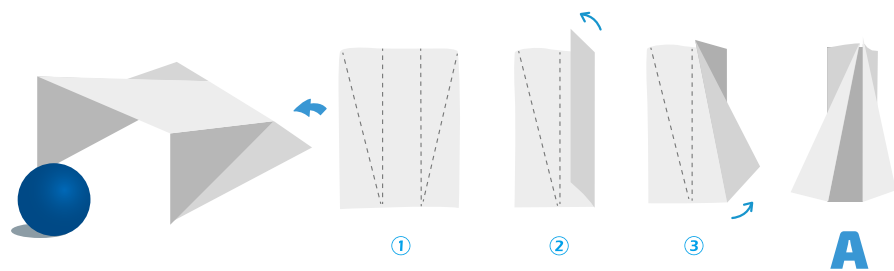
You first need goals. You can follow the steps on the next page to make your own goal frame with a simple sheet of paper. Place the ball at a certain distance from the snake, with the snake facing it.

Then, imagining the whistle signal, press the remote controllers to make your snake move forward and hit the ball.

## 1 Shape your goal frame

Take a sheet of paper. Follow the three simple steps on the figure, folding along the dotted line (you can draw these lines on your paper to be more precise).

Then unfold the paper and repeat the same steps on the other half of the sheet. Your sheet of paper should look like figure A. Fold the paper to shape your goal frame.

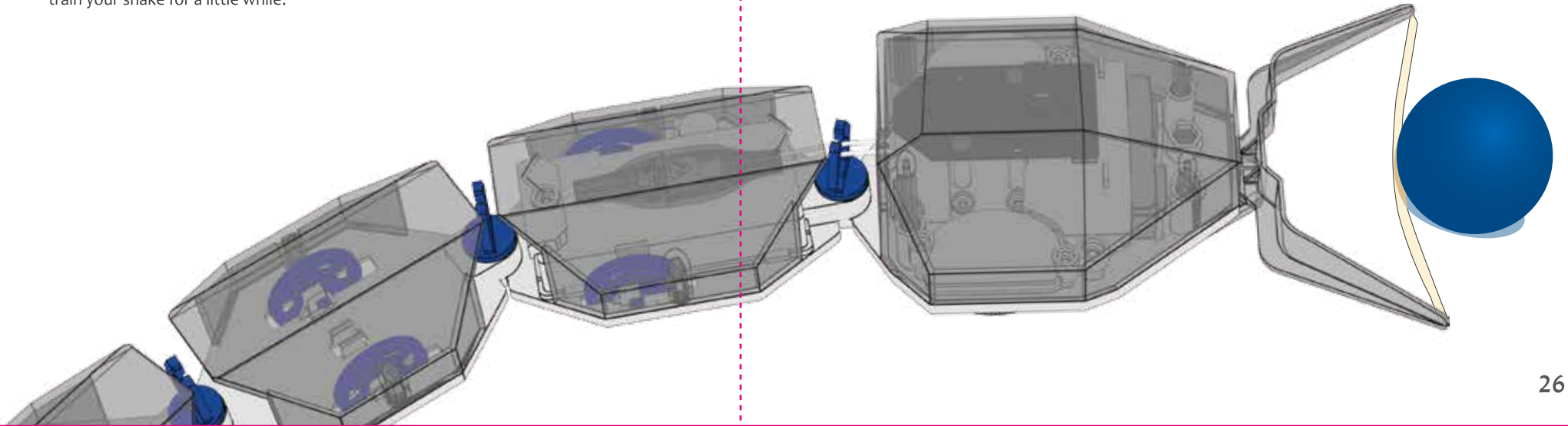
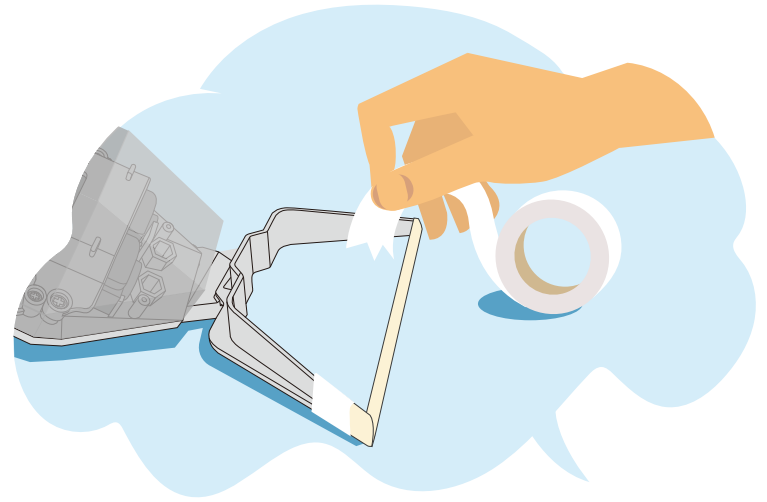


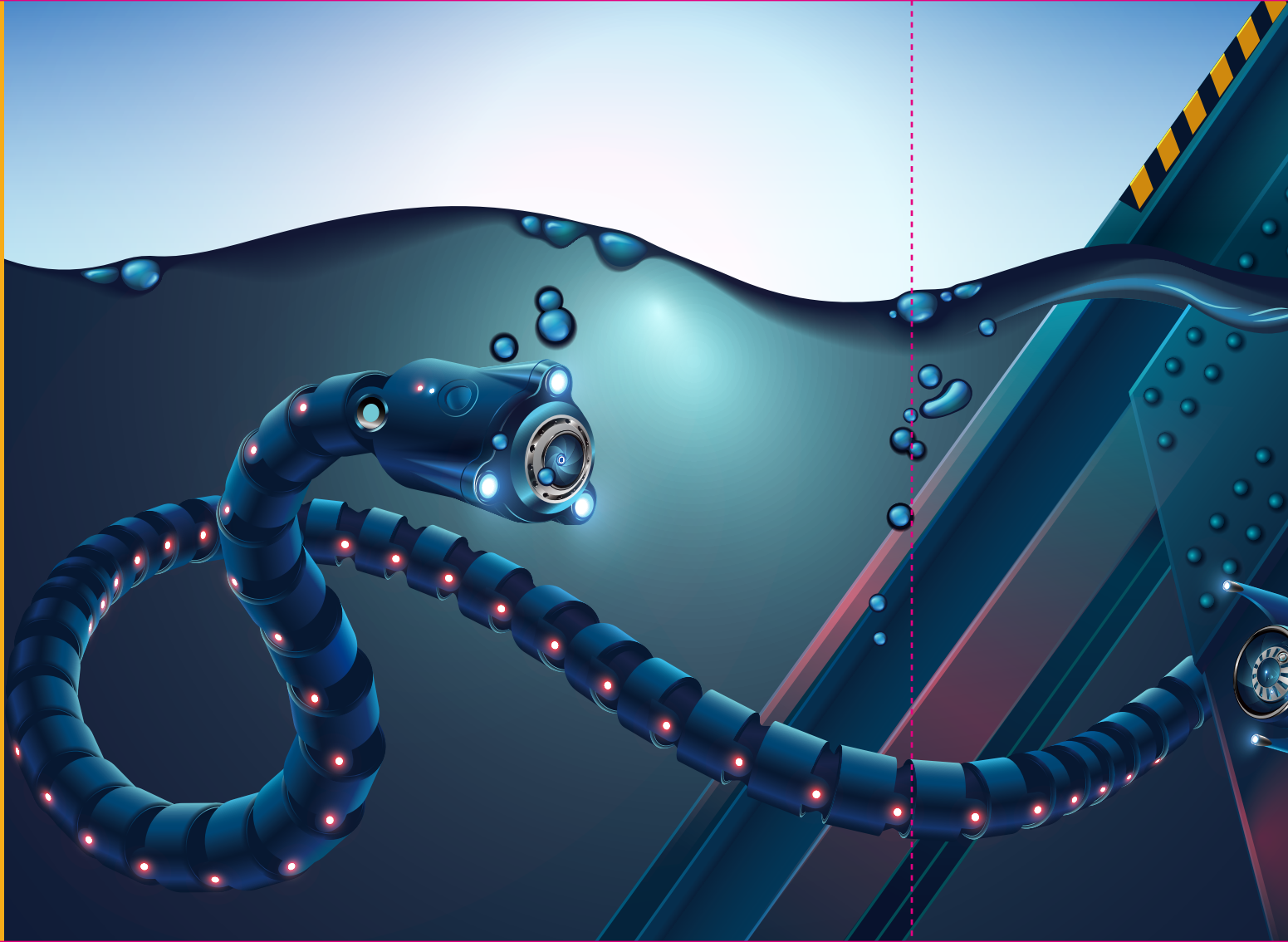
## 2 Find your best option

You will notice that depending on where you hit the ball, the trajectory will not be same.

The pusher on the snake is designed to ease the control of the ball. In order to make the free-kicks easier you can apply a strip of paper as illustrated. Try with and without the strip of paper and choose the best option for you.

In any case, to be able to take very good free kicks you will have to train your snake for a little while.





*Read to be inspired!*

What else can the bionic snake do?

There is a kind of robotic snake that can work underwater for construction and investigation tasks.





*Read to be inspired!*



What else can the bionic snake do?  
There is a kind of robotic snake  
used for rescuing because of its  
flexible and durable body.





*Read to be inspired!*

**Fun Fact!**

There is a soccer skill called SNAKE, also known as Flip Flap. It is a dribbling skill used for fooling defensive players. Players move the ball in a direction they do not want to go.

