

CORNING | MobileAccess
Wireless Solutions

QX Add-On Module 700 LTE

2

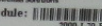
RS 232

Power



CORNING
MobileAccess
Windows Solutions

8391 Old Courthouse Road, Suite 300, Vienna, VA 22182, USA
Complies with 21 CFR 1040.10 and 1040.11 Except for
deviations pursuant to Laser Notice No. 50 (July 26, 2001)
& IEC 60825-1 Amendment 2 (Jan. 2001)

Module:  - Rev. 58

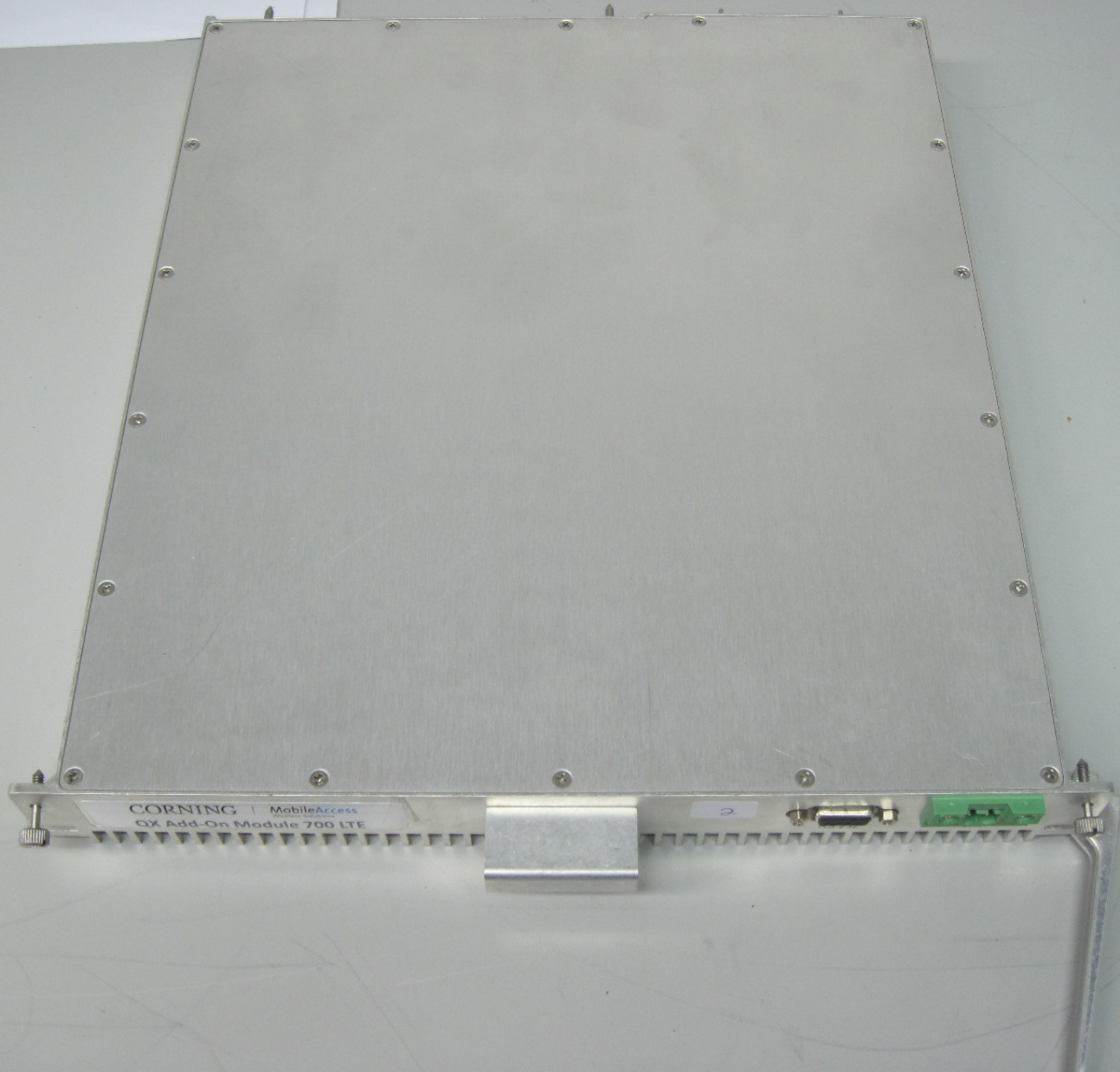
S/N:  2000 L 3.8 AM
0C43075

Manufactured: October 2012

DC Power
25-48 V DC
Max. 2.0 A





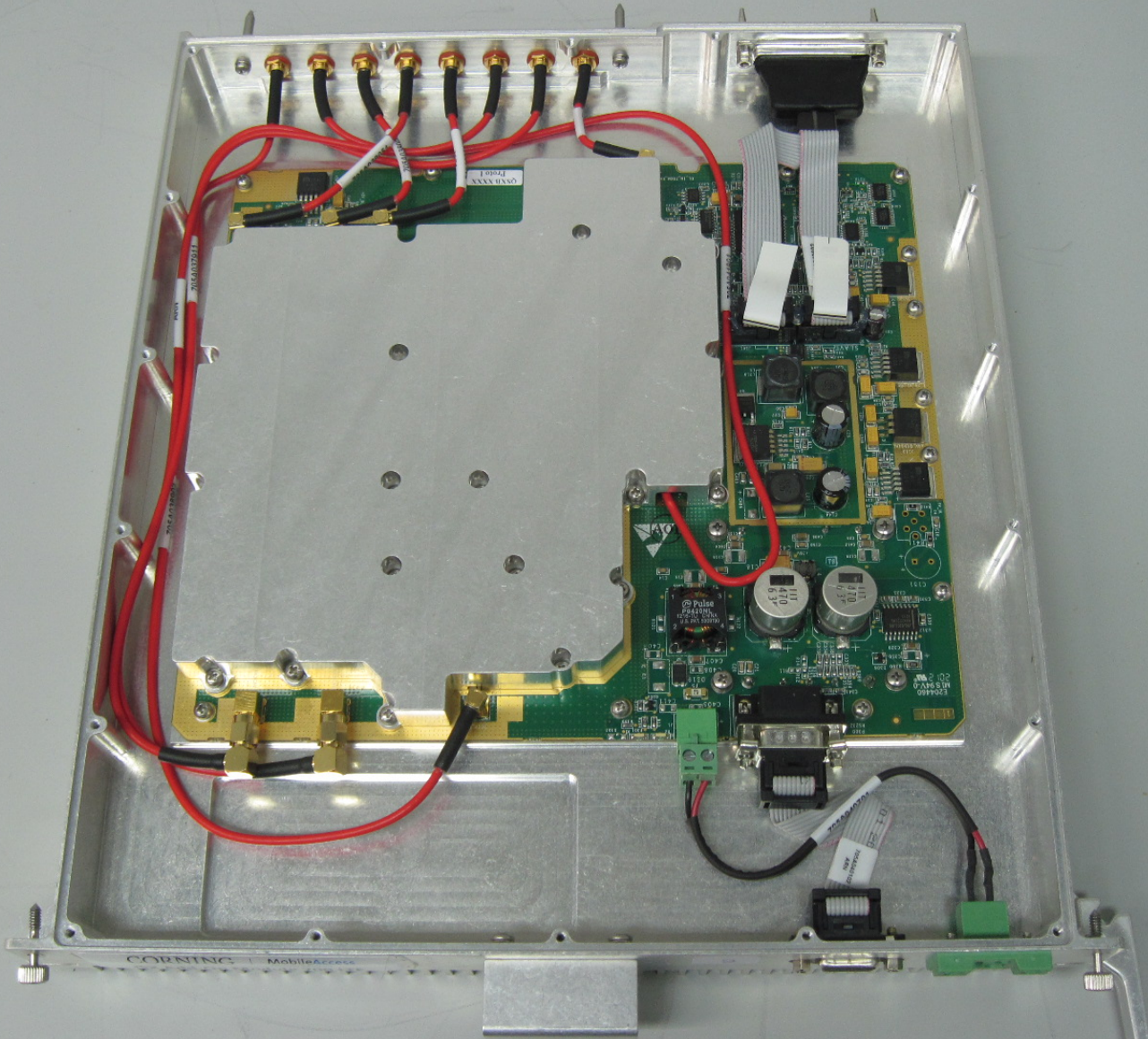


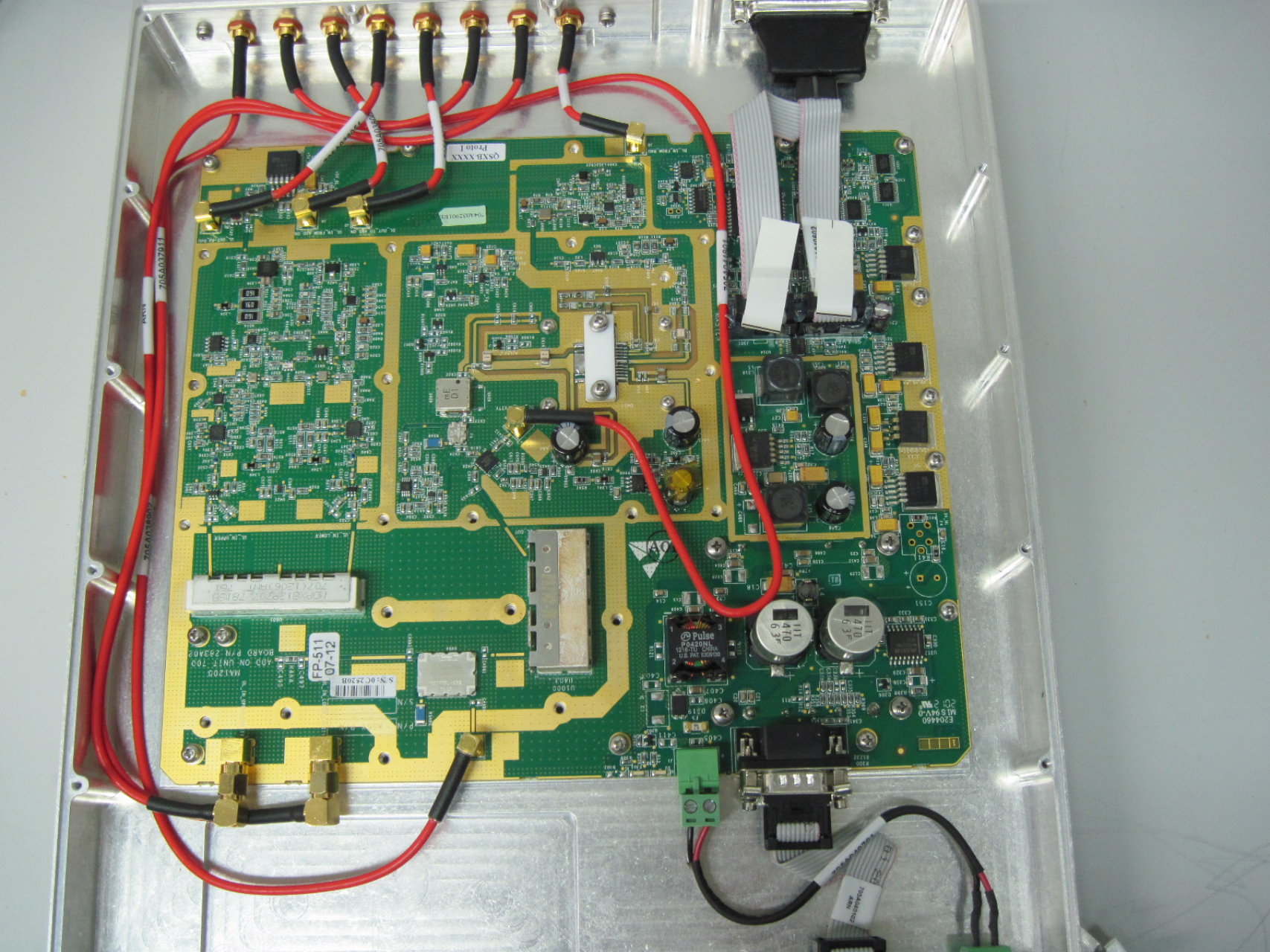
CORNING | MobileAccess
GX Add-On Module 700 LTE

2



64K Addr. 011 Module 700 L1E





705A007011

QSPH XXXX

MA1205
BOARD ON UNIT 700
40D P/N 293A0

FP-511
07-12

S N 80 C 25308

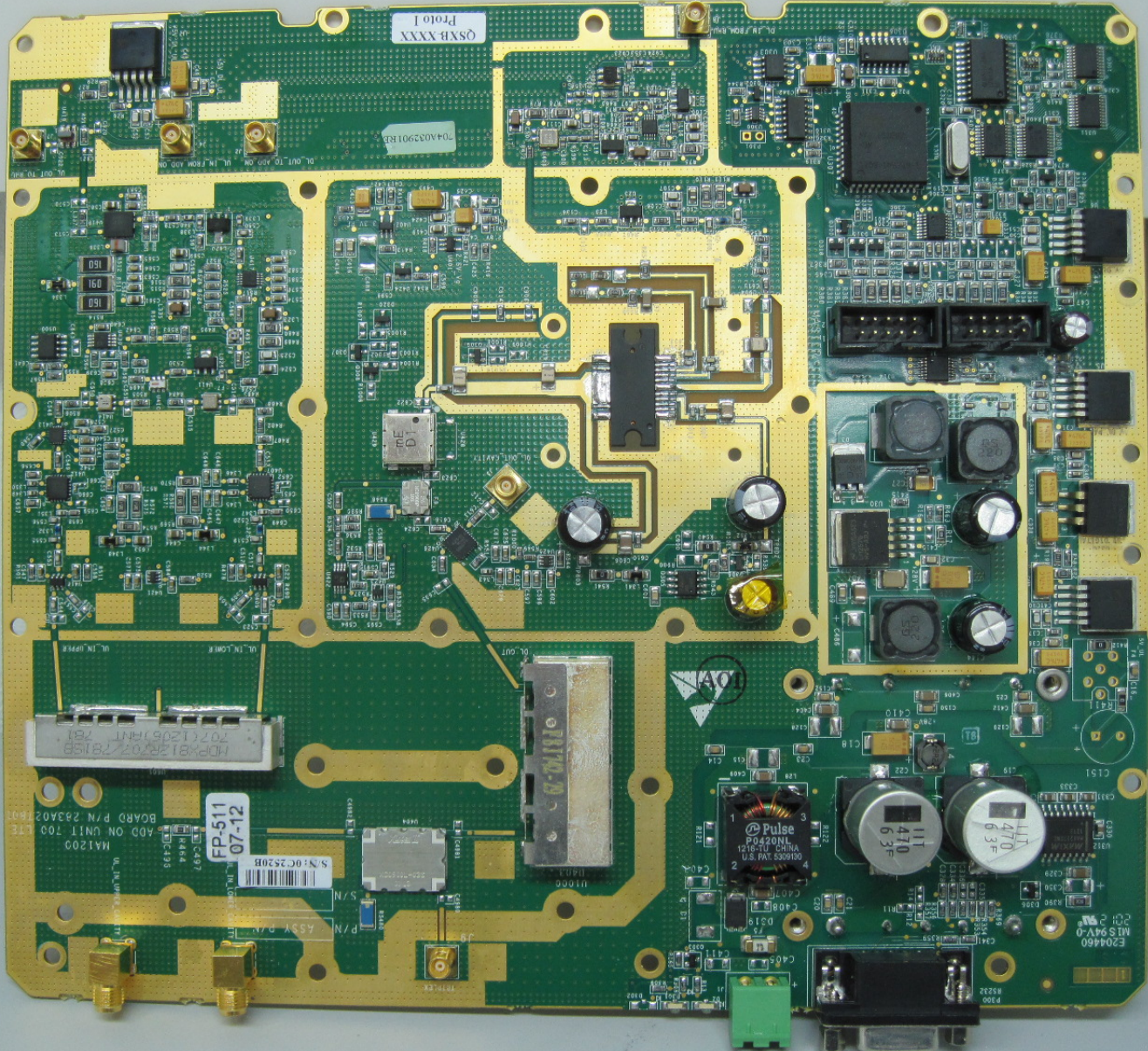
Pulse
1000V
1000V

470
6.3V

470
6.3V

E204460
MIS 9440
20 2 944

705A007011



Q5XB-XXXX

Proto 1

ADP-813R-02-7815B
707112051RMT 781

FP-511
07-12

MAI200
ADD ON UNIT 700 LITE
BOARD P/N 283A02-803

Pulse
PO420NL
1210-111 CHINA
U.S. PAT. 6309100

E204460
MIS 94V-0
PCB C/PV



