

CORNING | MobileAccess
Wireless Solutions
QX Remote Hub Module Cell/PCS



Loopback



RS 232



To From

Optical

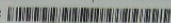
CORNING
MobileAccess
Wireless Solutions

This device complies with Part 15 of the FCC Rules.
Operation is subject to the following two conditions:
1) This device may not cause harmful interference, and
2) This device must accept any interference received,
including interference that may cause undesired
operation.

FCC ID: OJFQXC85P19

CORNING

MobileAccess
Wireless Solutions

Module:  -Rev. S8

S/N: 
2000-C85P19-B-R8M
0C4304C

Manufactured: October-2012

8391 Old Courthouse Road, Suite 300, Vienna, VA 22182, USA
Complies with 21 CFR 1040.10 and 1040.11 Except for
deviations pursuant to Laser Notice No. 50 (July 26, 2001)
& IEC 60825-1, Amendment 2 (Jan. 2001)

DC Power
20-48 VDC, DC
Max. 1.3 A



DIGITAL

ADD ON
DL

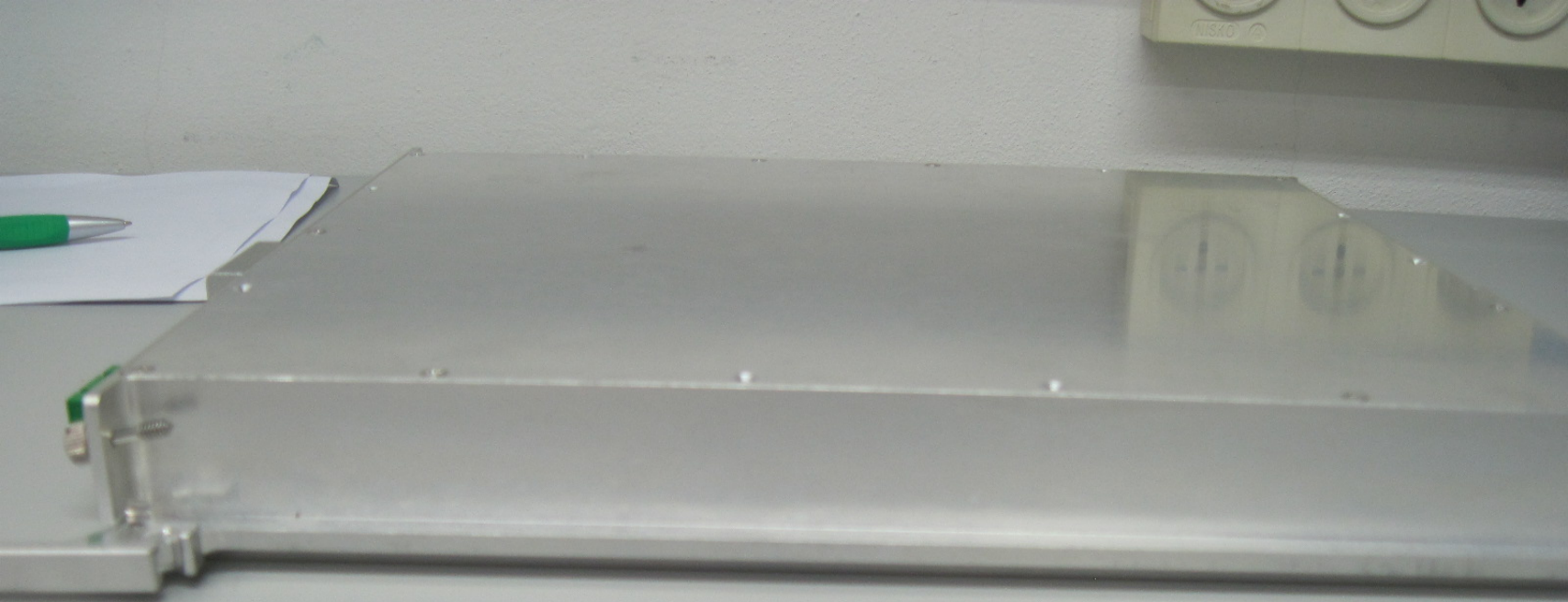
ADD ON
UL

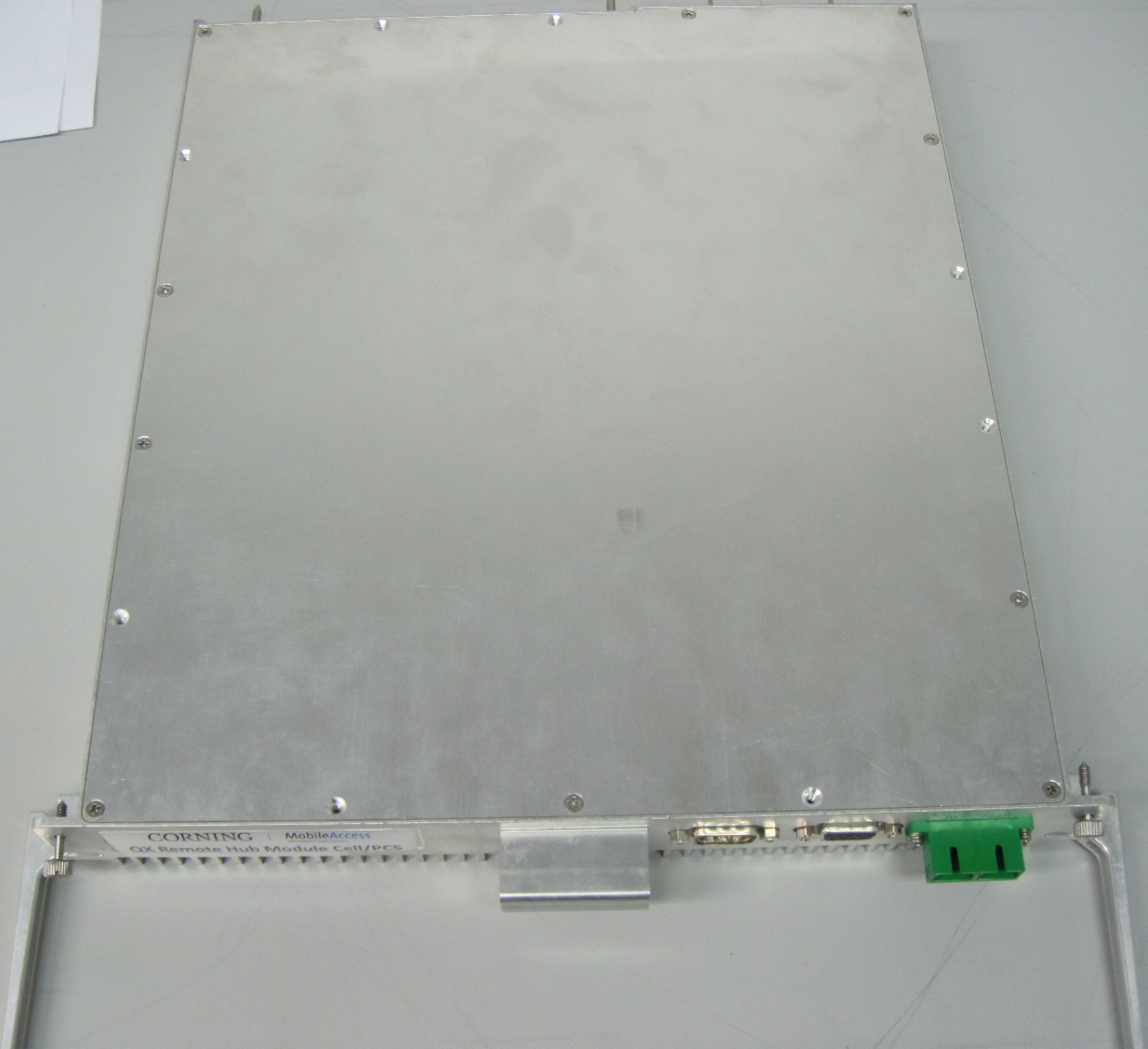
PORT 4

PORT 3

PORT 2

PORT 1

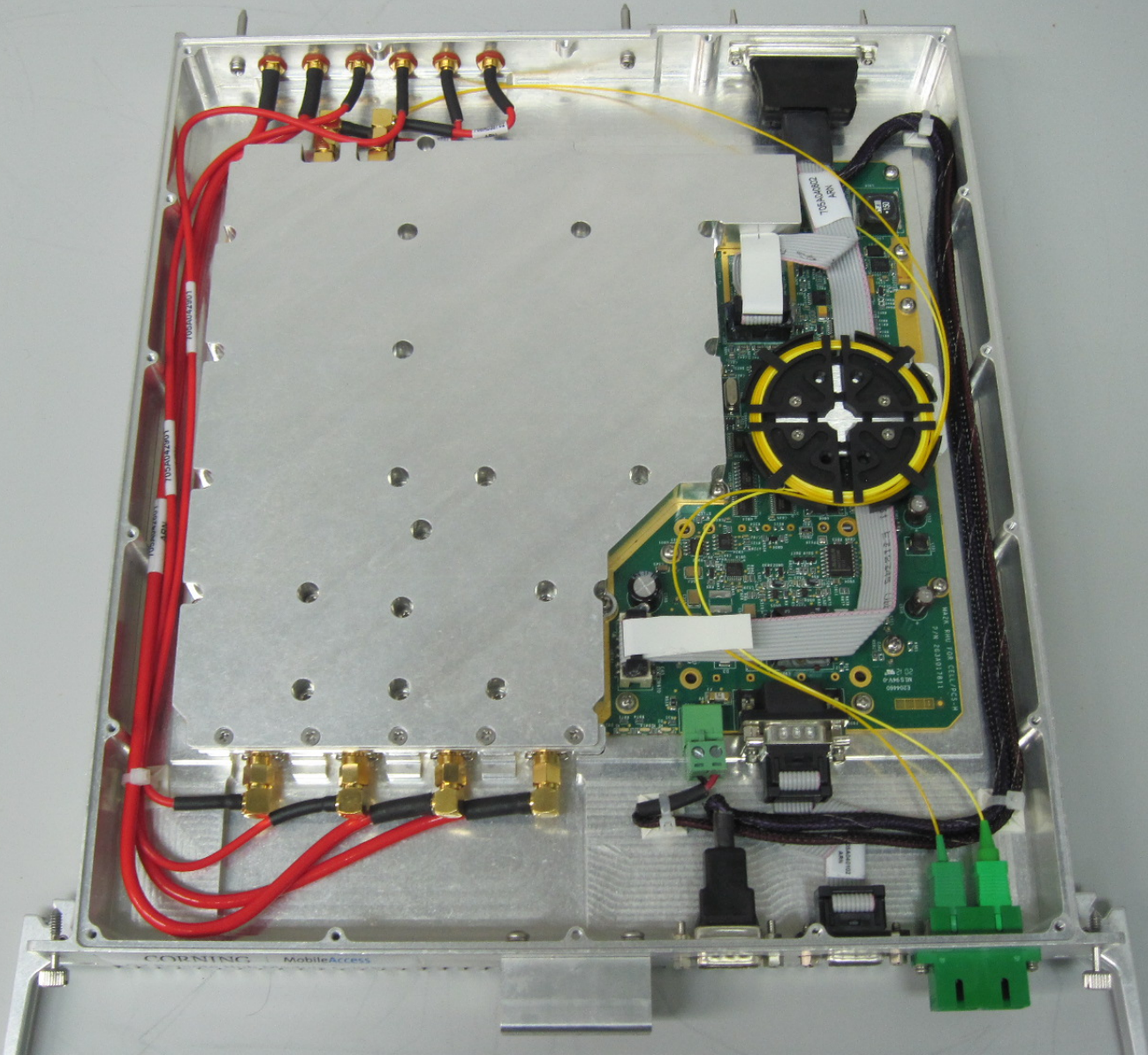


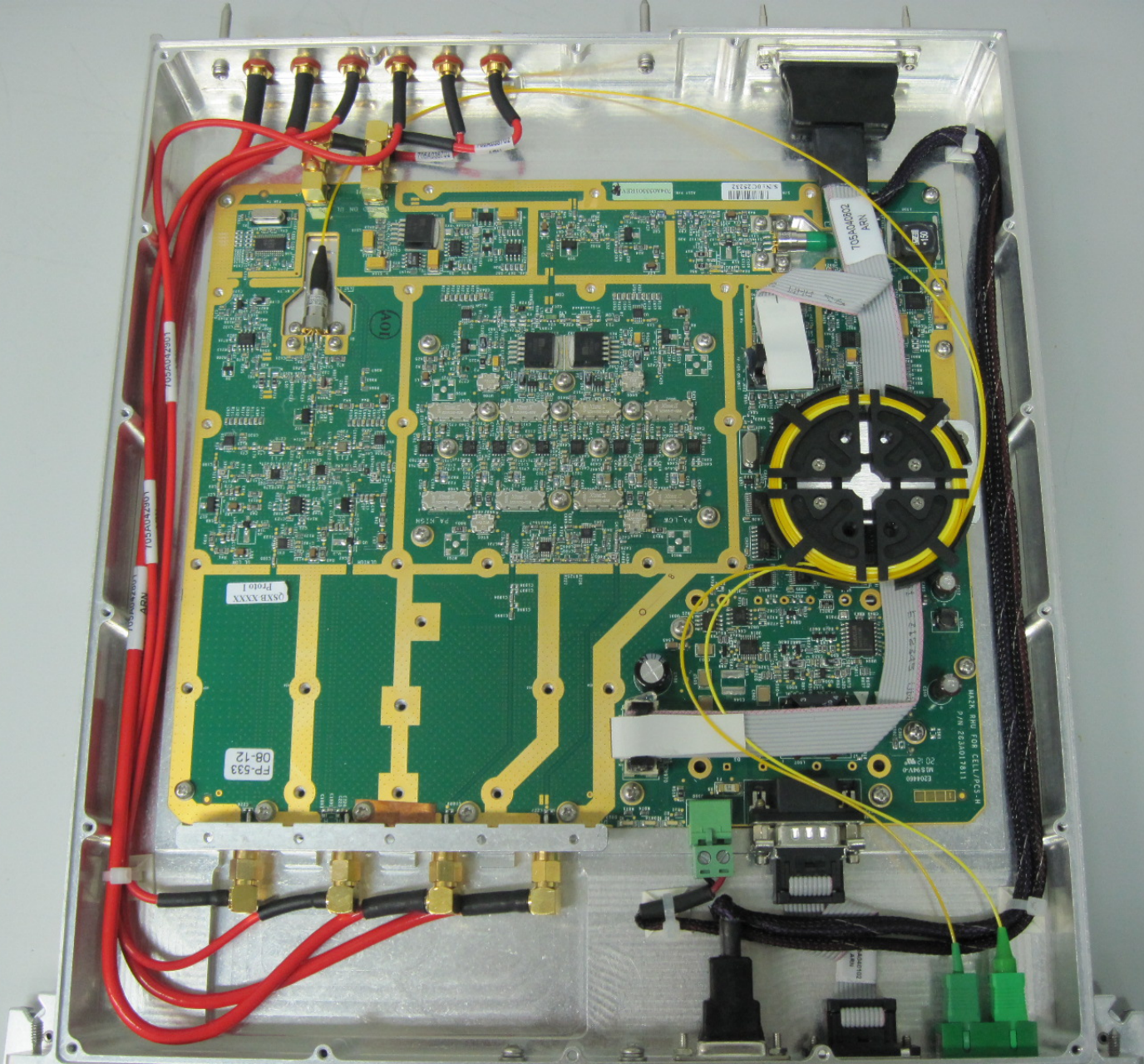


CORNING MobileAccess
OX Remote Hub Module Cell/PCS



48 48mm x 110mm Hub Module Cell/PC





FP-533
08-12

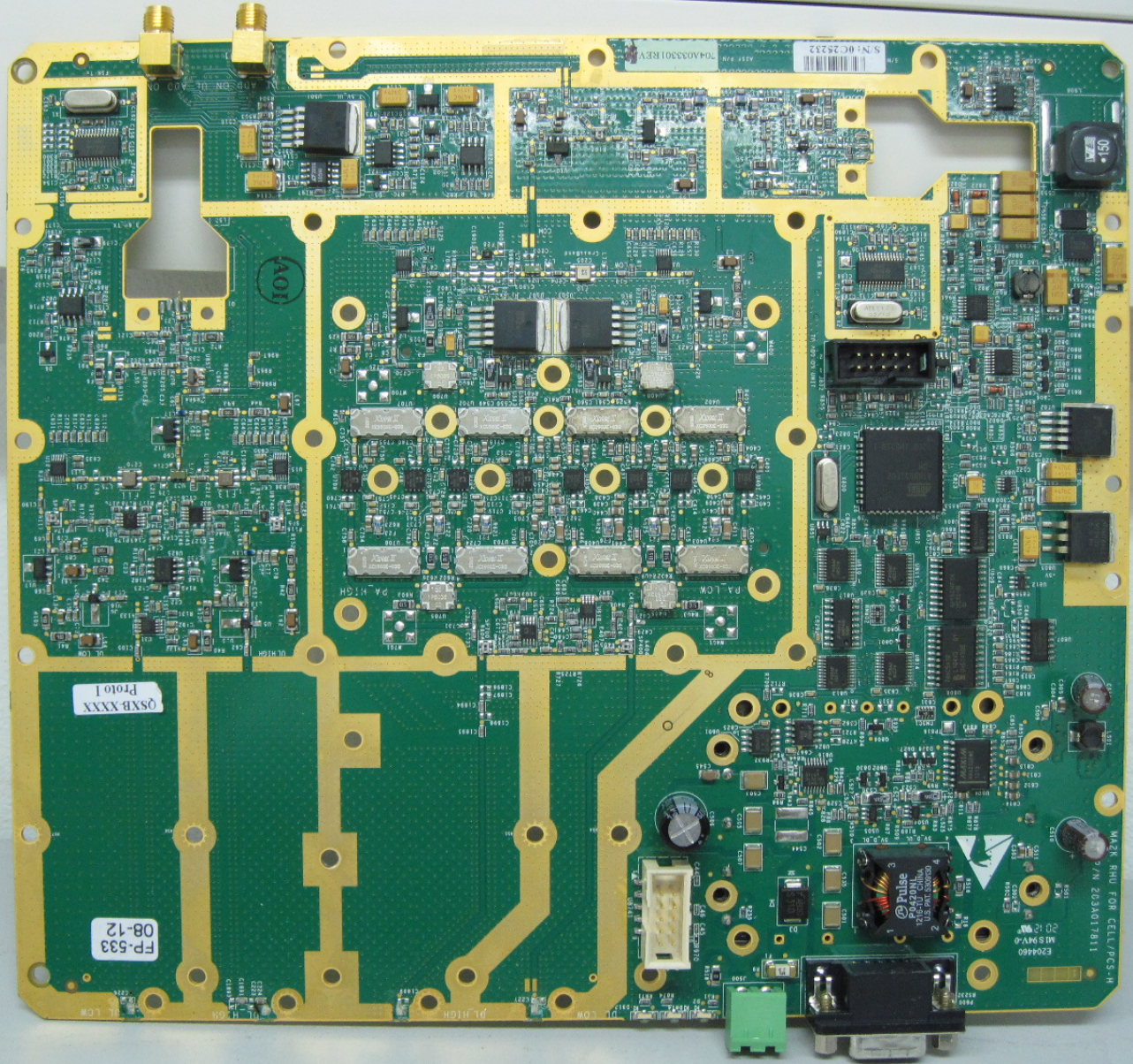
05RB-XXXX
Page 1

P.A. LCR

P.A. MATCH

T05R400302
ARN

MATEX RM 7/11 FOR CELLULAR



QSRB-XXXX
Proto 1

FP-533
08-12

70A03301REF

S/N: 0C 25213

AOI

E20460
MS 9V-0
20 R 2/7N 203A017011
MA2K RHU FOR CELL/PCS-H

Pulse
PE4209L
1.5A 1.5V 200000

