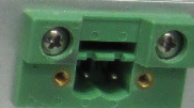


CORNING | MobileAccess
Wireless Solutions

QX Add-On Module AWS



RS 232




Power

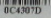
CORNING

MobileAccess
Wireless Solutions

8391 Old Courthouse Road, Suite 300 Vienna, VA 22182, USA
Complies with 21 CFR 1040.10 and 1040.11 Except for
deviations pursuant to Laser Notice No.50 (July 26,2001)
& IEC 60825-1 Amendment 2 (Jan,2001)

Module:  - Rev. 58

S/N:  800-A17-E-AM

Manufactured: October-2012
 804397D

DC Power
25-48 V.DC.
Max. 2.0 A



DIGITAL

DL

UL

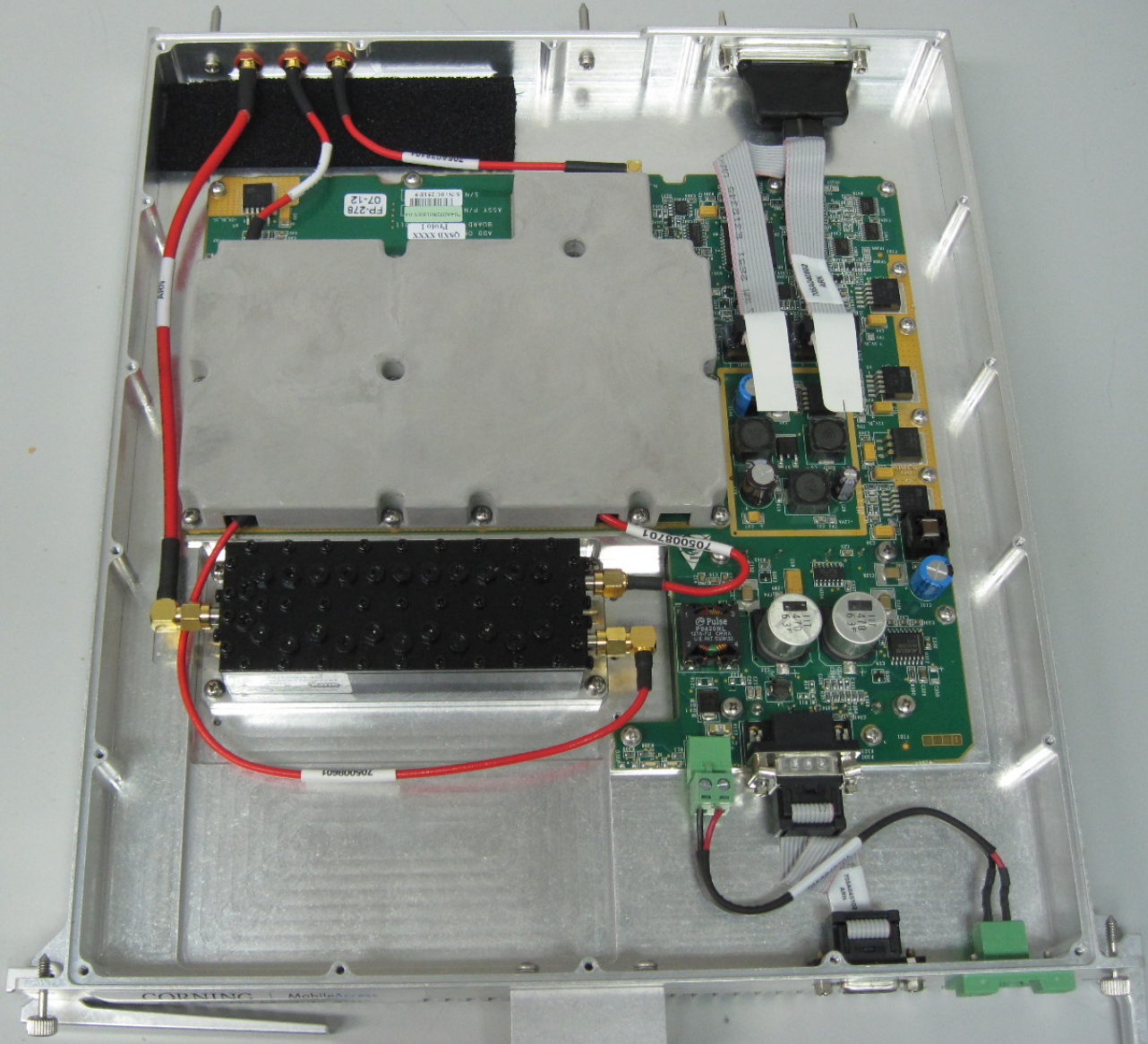
HIGH
BAND







QA Add-On Module AWS



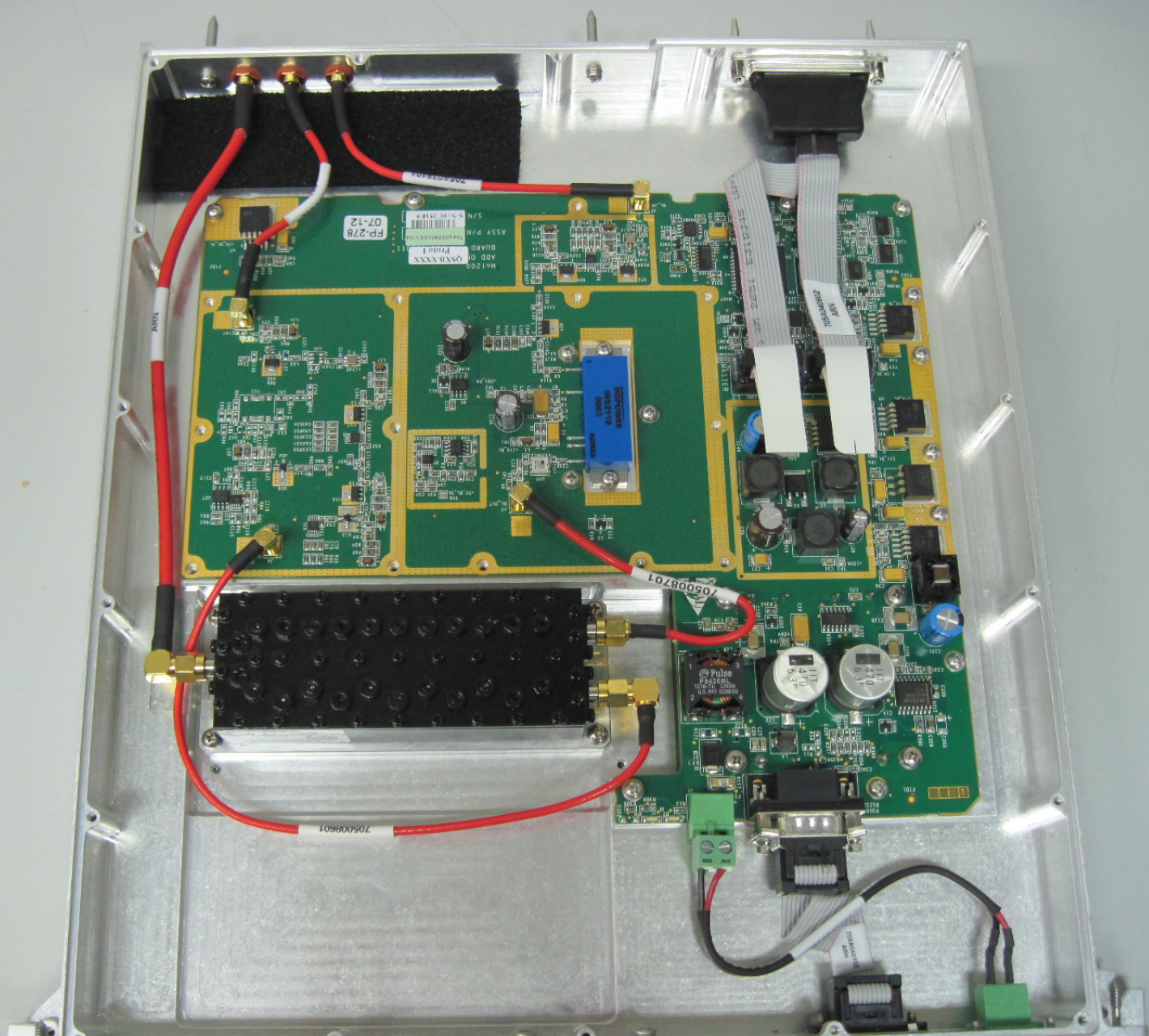
ASSEMBLY P/N: 07-12
BOARD: 07-12
PART: 07-12
DATE: 07-12

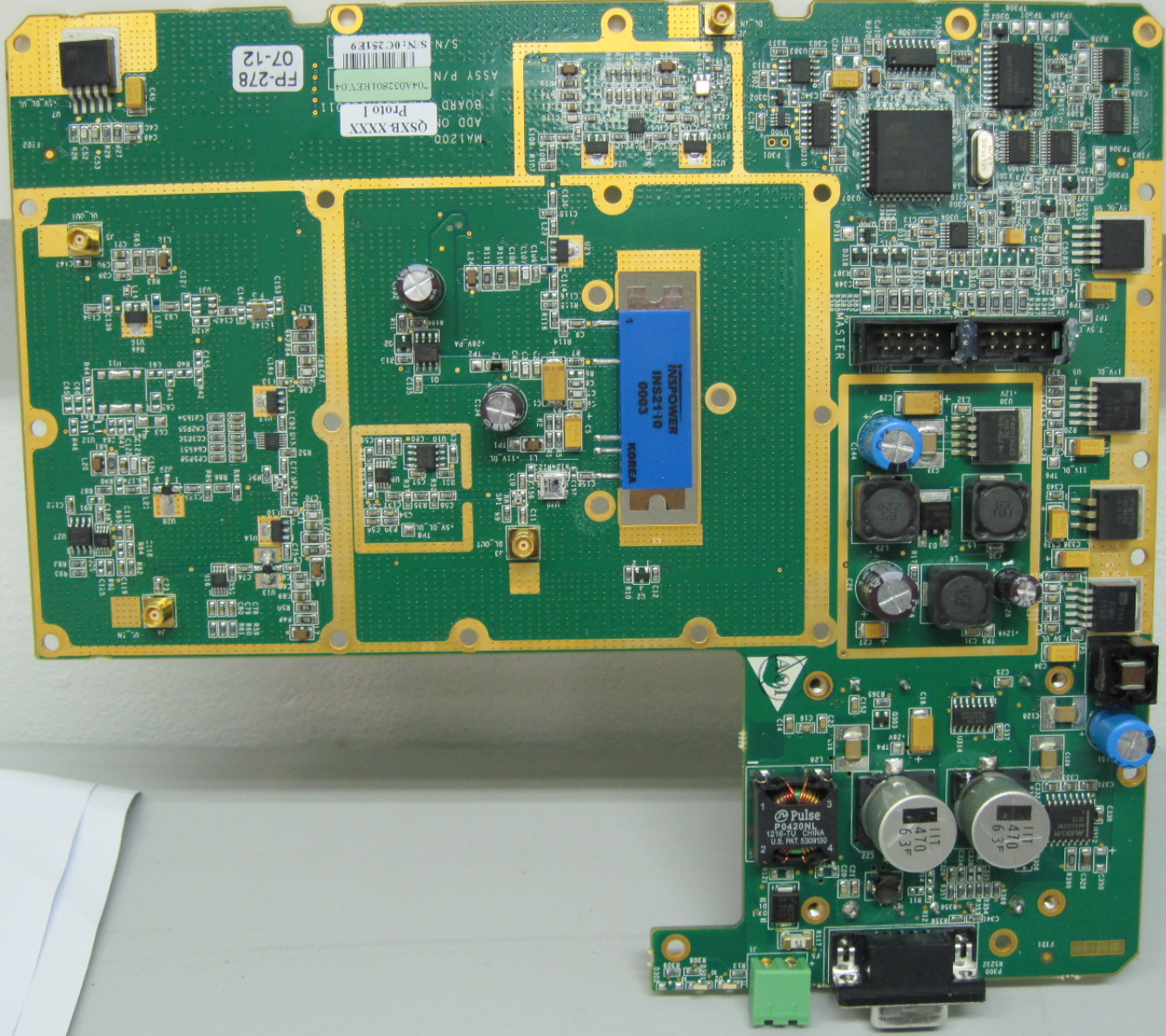
705008701

705008701

705009601

CORNING | Mobile Access





MA1200
ADD ON
BOARD
Proto 1
704A032801REV.04
S/N: 0C251E9
FP-278
07-12

INTEC
IN524 10
0003
KOREA

Pulse
P0420N1
12V 1.0A
U.S. PAT. 5,529,130

470
6.3V

470
6.3V

