

PCB A.P-DIGITAL_WIFIMAX & D.B

Pulse
PA1558NL
1001-S CHINA

283A011704

SH1

Top-left section of the PCB containing a large Pulse PA1558NL chip, several electrolytic capacitors (C20, C21, C22, C23, C24, C25, C26, C27, C28, C29, C30, C31, C32, C33, C34, C35, C36, C37, C38, C39, C40, C41, C42, C43, C44, C45, C46, C47, C48, C49, C50, C51, C52, C53, C54, C55, C56, C57, C58, C59, C60), inductors (L1, L2, L3, L4, L5, L6, L7, L8, L9, L10, L11, L12, L13, L14, L15, L16, L17, L18, L19, L20, L21, L22, L23, L24, L25, L26, L27, L28, L29, L30, L31, L32, L33, L34, L35, L36, L37, L38, L39, L40, L41, L42, L43, L44, L45, L46, L47, L48, L49, L50, L51, L52, L53, L54, L55, L56, L57, L58, L59, L60), and various resistors (R1, R2, R3, R4, R5, R6, R7, R8, R9, R10, R11, R12, R13, R14, R15, R16, R17, R18, R19, R20, R21, R22, R23, R24, R25, R26, R27, R28, R29, R30, R31, R32, R33, R34, R35, R36, R37, R38, R39, R40, R41, R42, R43, R44, R45, R46, R47, R48, R49, R50, R51, R52, R53, R54, R55, R56, R57, R58, R59, R60).

Bottom and right sections of the PCB containing a large integrated circuit (U305), a 9D 1000 10A capacitor, and numerous other components including integrated circuits (U300, U301, U302, U303, U304, U306, U307, U308, U309, U310, U311, U312, U313, U314, U315, U316, U317, U318, U319, U320, U321, U322, U323, U324, U325, U326, U327, U328, U329, U330, U331, U332, U333, U334, U335, U336, U337, U338, U339, U340, U341, U342, U343, U344, U345, U346, U347, U348, U349, U350), resistors (R300, R301, R302, R303, R304, R305, R306, R307, R308, R309, R310, R311, R312, R313, R314, R315, R316, R317, R318, R319, R320, R321, R322, R323, R324, R325, R326, R327, R328, R329, R330, R331, R332, R333, R334, R335, R336, R337, R338, R339, R340, R341, R342, R343, R344, R345, R346, R347, R348, R349, R350, R351, R352, R353, R354, R355, R356, R357, R358, R359, R360), capacitors (C300, C301, C302, C303, C304, C305, C306, C307, C308, C309, C310, C311, C312, C313, C314, C315, C316, C317, C318, C319, C320, C321, C322, C323, C324, C325, C326, C327, C328, C329, C330, C331, C332, C333, C334, C335, C336, C337, C338, C339, C340, C341, C342, C343, C344, C345, C346, C347, C348, C349, C350), and inductors (L300, L301, L302, L303, L304, L305, L306, L307, L308, L309, L310, L311, L312, L313, L314, L315, L316, L317, L318, L319, L320, L321, L322, L323, L324, L325, L326, L327, L328, L329, L330, L331, L332, L333, L334, L335, L336, L337, L338, L339, L340, L341, L342, L343, L344, L345, L346, L347, L348, L349, L350).

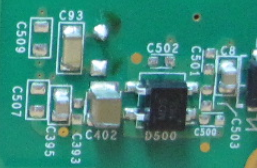
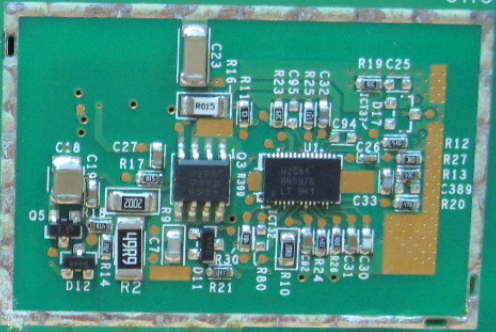
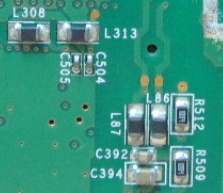
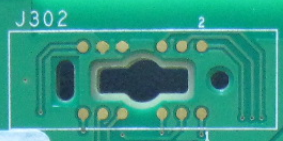
S/N: 001009000C2

704A01 7604REV. A00

VE 700LTE
PROTO II

FP-533
11-10

S/N
ASSY. P/N



SH3

P/N 704A024101REV.06

VE PCB ACCZS6
LTEX RF
283A018701

ASSY
0010160001B

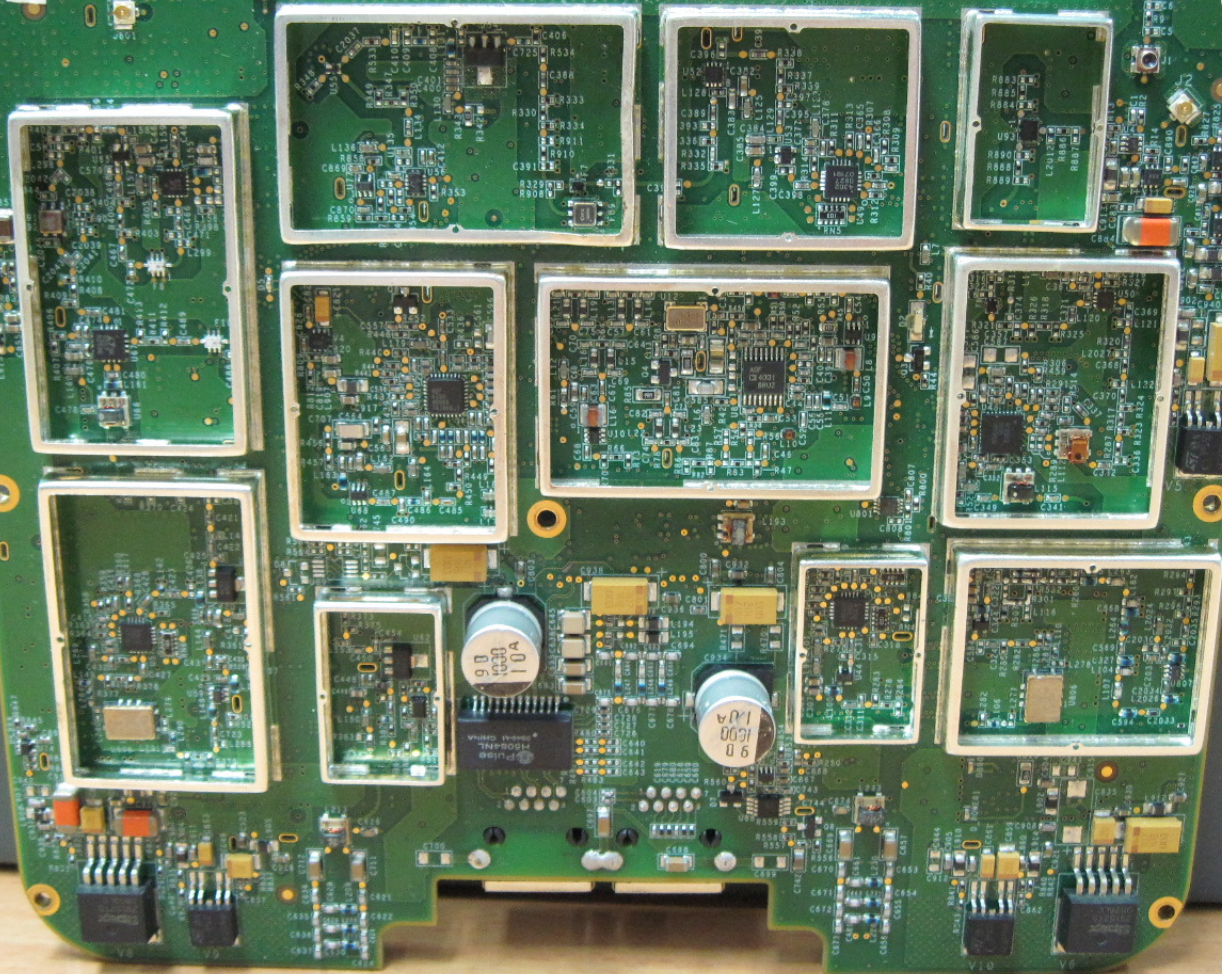
VE 700LTE
PROTO II

E204460
M1S94V-0
R10

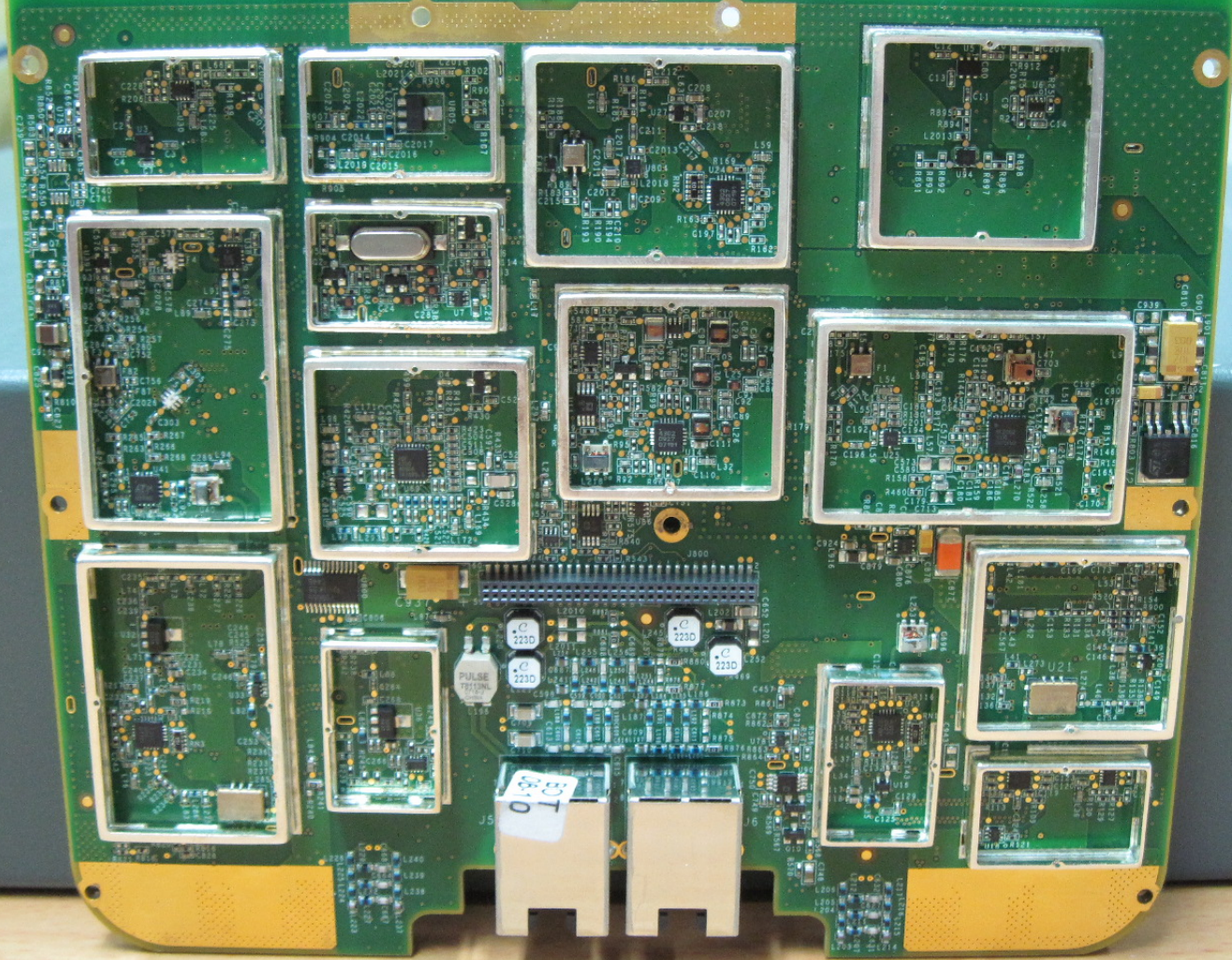
BC

7P)
DL
UL

FP-533
06-10



CAUTION
DO NOT
100-100



9810