

# MA-850



## MA-850 WLAN Integrator

## MobileAccess 850

Used stand alone or as a component of the MobileAccess Universal Wireless Network, the MA-850 enables centralizing of 802.11b/g WLAN Access Points (APs) in secure telecom closets for reduced maintenance and disruption while converging mobile services over a common infrastructure.

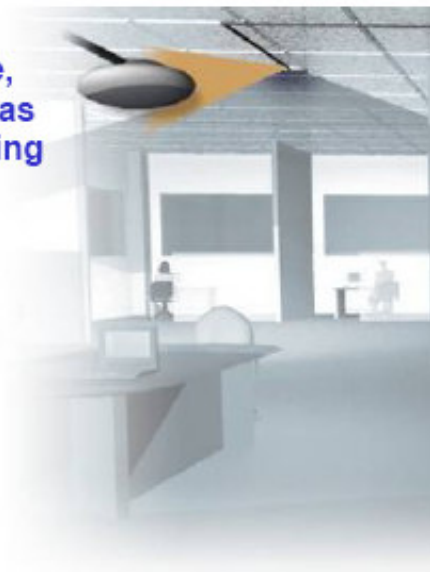
**Centralize APs in secure telecom closets.** Unlike traditional Wi-Fi deployments where Access Points are installed on ceilings and walls throughout the facility.

**IT managers can more easily access APs,** which ultimately reduces the operational costs of managing the Wi-Fi network and minimizes disruption within the facility.

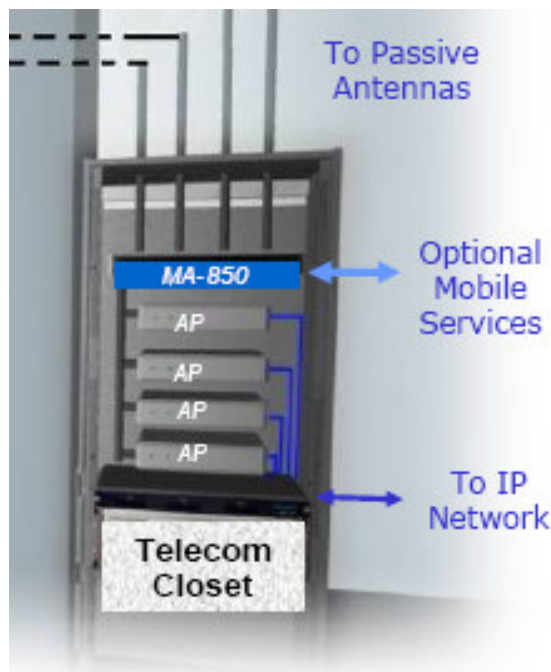
**Esthetically pleasing antennas** are strategically placed to provide consistent reliable coverage supporting all services and advanced AP features such as VoIP, rogue detection, and location based services.

And the 850 is **easy to install, control, monitor and maintain** via local or web based access.

Passive,  
Antennas  
on Ceiling



**Combined with the MobileAccess Mobile Services** products, the 850 seamlessly converges Wi-Fi with other services to support cell phones, pagers, blackberrys, public safety radios and more over a common cabling infrastructure.



**Multiple Services, Secure and Easy to Maintain**



Technology  
Developer  
Partner

## 802.11b/g RF Parameters

Four Ports	SMA Female, 50 ohm
Bandwidth	2400 - 2485 MHz
Insertion Loss	0 dB per port
Flatness	±1.5 dB

## Mobile Services Parameters

Four Ports	SMA Female, 50 ohm
Bandwidth	806 – 960 MHz,
Insertion Loss	1.0 dB per port
Flatness	±0.5 dB
Bandwidth	1710 – 1990 MHz
Insertion Loss	2.0 dB per port
Flatness	±0.75 dB
Bandwidth	1920 – 2170 MHz "-U" Only
Insertion Loss	3.0 dB per port
Gain Flatness	±1.5 dB

## Antenna Ports

Four Ports	N-type Female, 50 ohm
------------	-----------------------

## Management

Configuration and monitoring via local RS232 connection and remote connection through a Web browser application

## Power

Power	20 to 48 VDC; 20W
-------	-------------------

## Physical Specification

Dimensions	242 mm x 279 mm x 38 mm (9.54 in x 10.98 in x 1.5 in)
Weight	2.82 kg (6.2 lb)

## Environmental Specifications

Temperature	
Operating	0°C to +50°C (32°F to 122°F)
Storage	-20°C to 85°C (-4°C to 185°C)
Humidity	
Operating	95% (non-condensing)
Storage	95% (non-condensing)

## Standards and Approvals

USA	FCC-47 CFR parts 2,15,22,24,90
-----	--------------------------------

## Ordering Information

850	Module supporting 4 802.11 b/g
850-U	850 module supporting UMTS
	Includes 110/220 66W power supply
AK-850-1000	Accessory kit for 850 with 1000
AK-850-1200	Accessory kit for 850 with 1200
AK-850-MDLT	Accessory kit for 850 with Modulite
AK-850-2000	Accessory kit for 850 with 2000
AK-850-SA	Accessory kit for 850 stand alone

## Wiring Diagram – MA-850 Stand Alone

