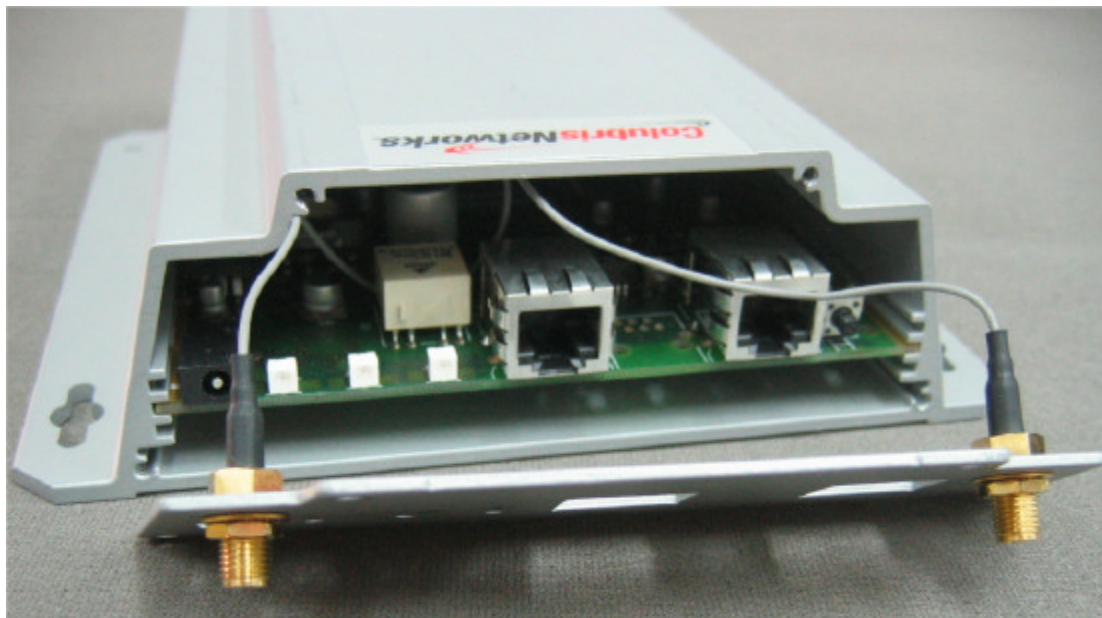


INTERNAL PHOTOGRAPHS of ACCESS POINT

This document contains 11 photographs

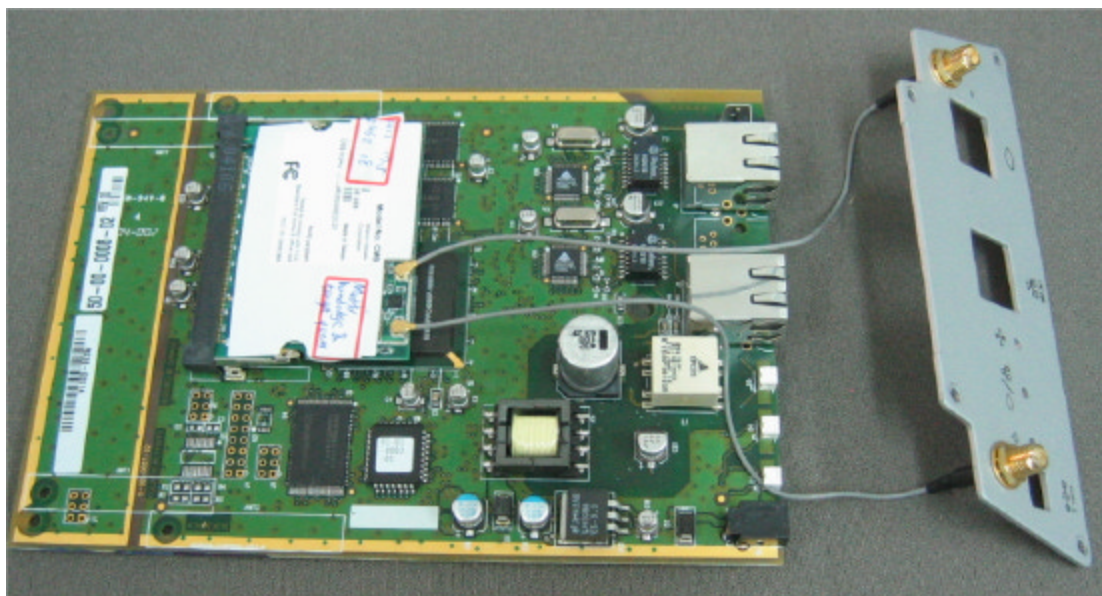
Photograph No.1
Internal view



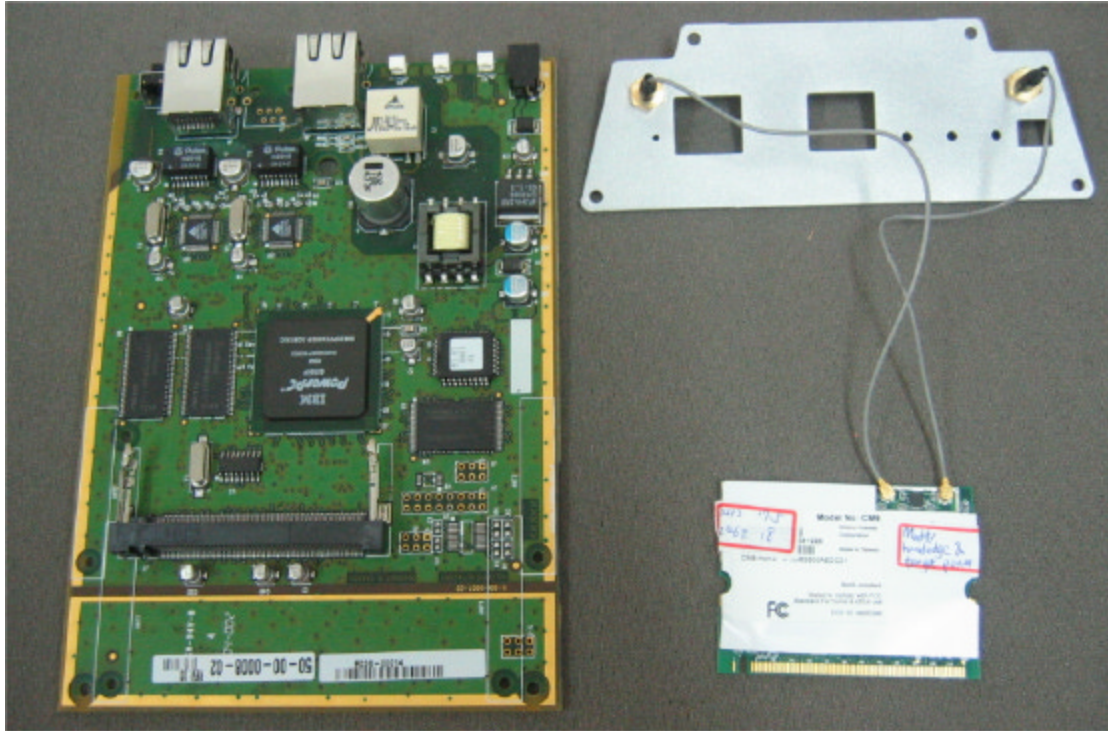
Photograph No.2
Internal view, PCB removed



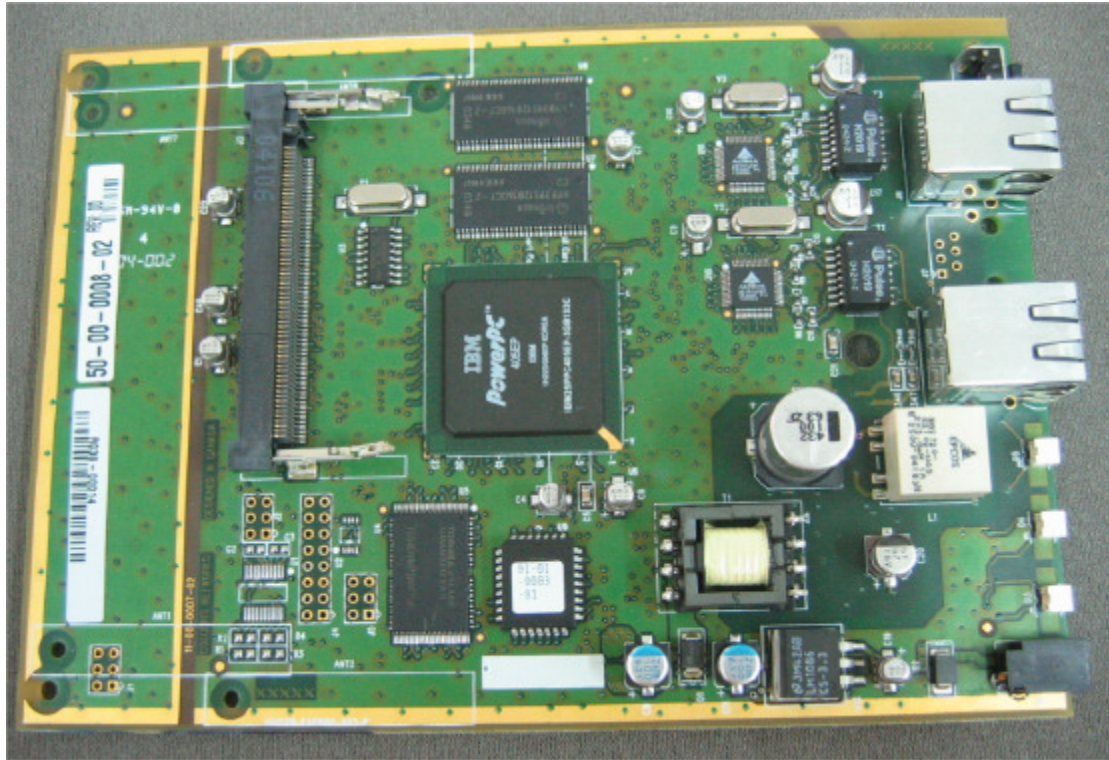
Photograph No.3
Main PCB general view



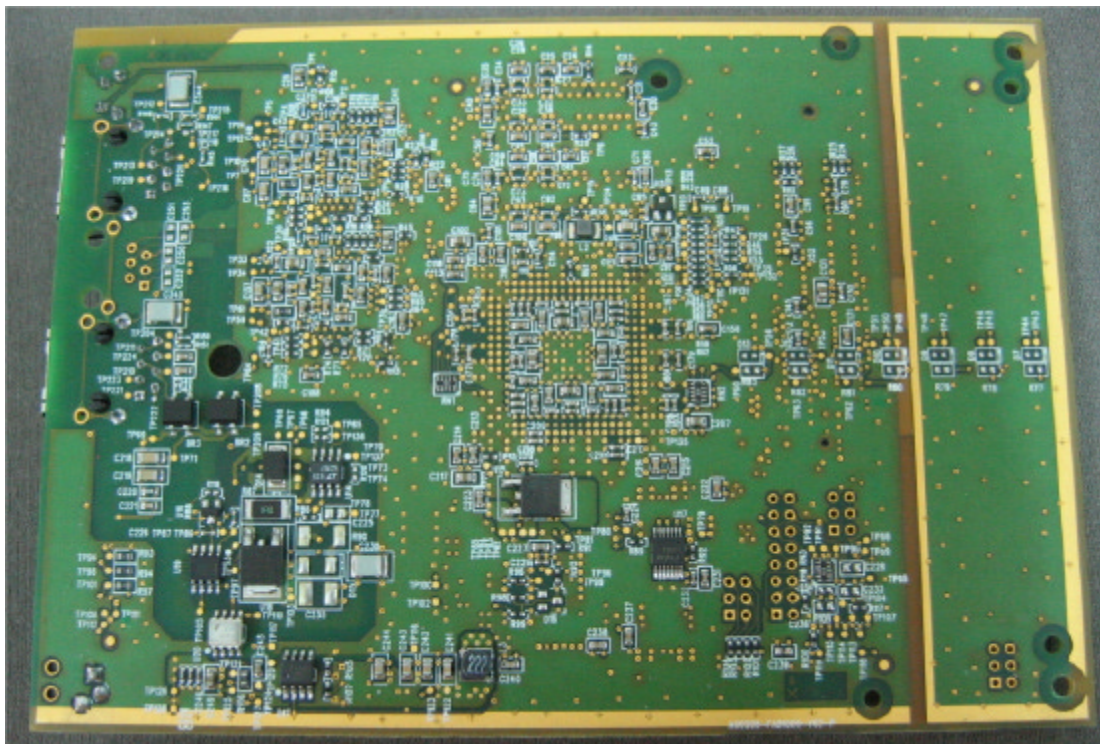
Photograph No.4
Main PCB with mini PCI card removed



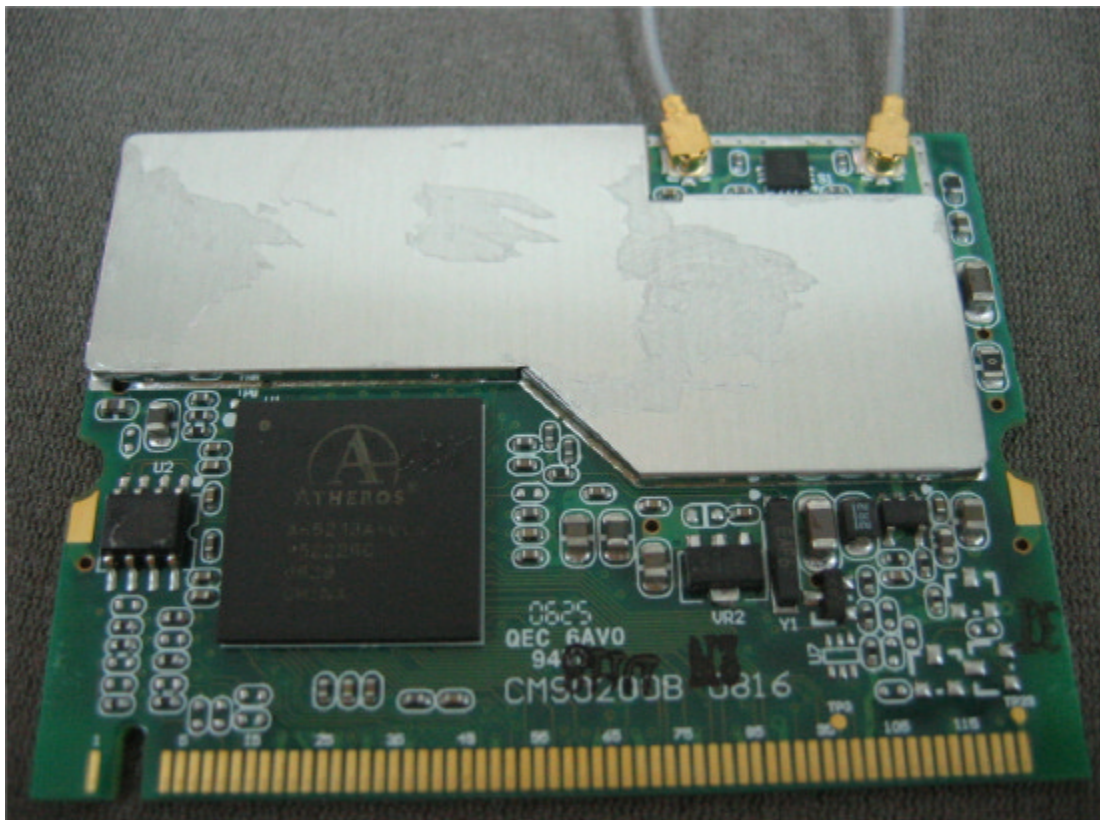
Photograph No.5
Main printed circuit board, top view



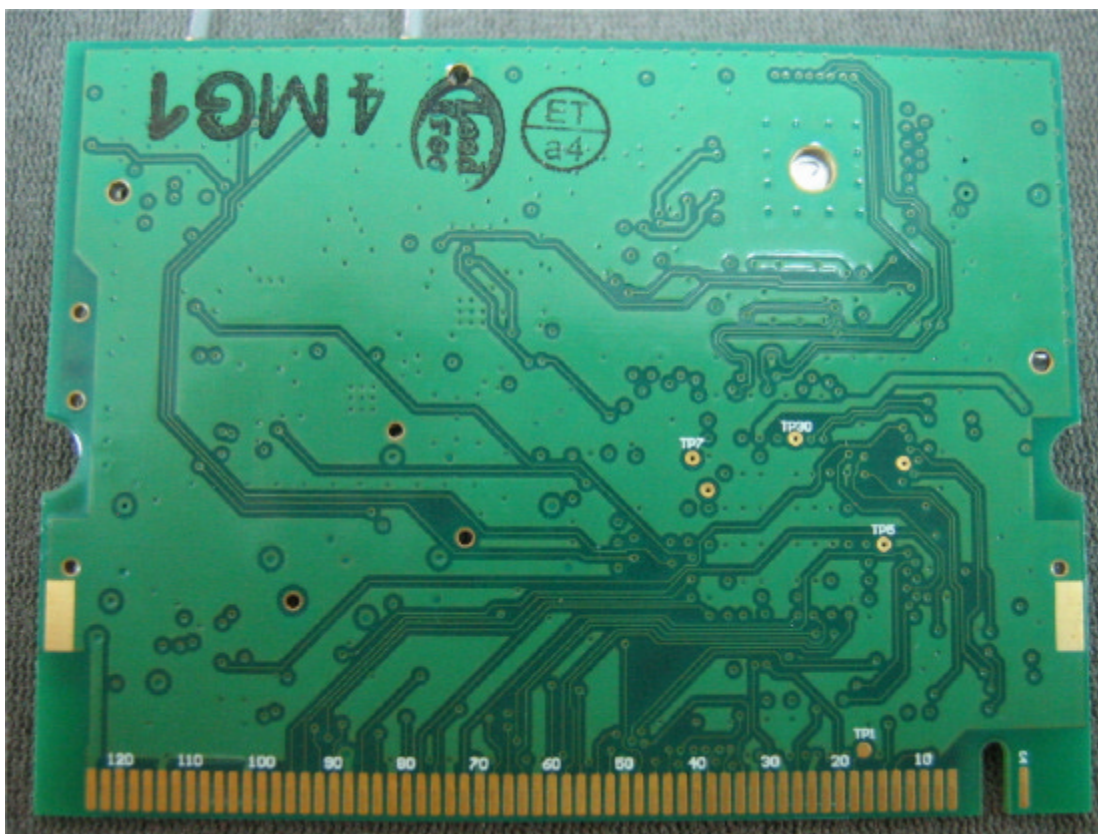
Photograph No.6
Main printed circuit board, second side view



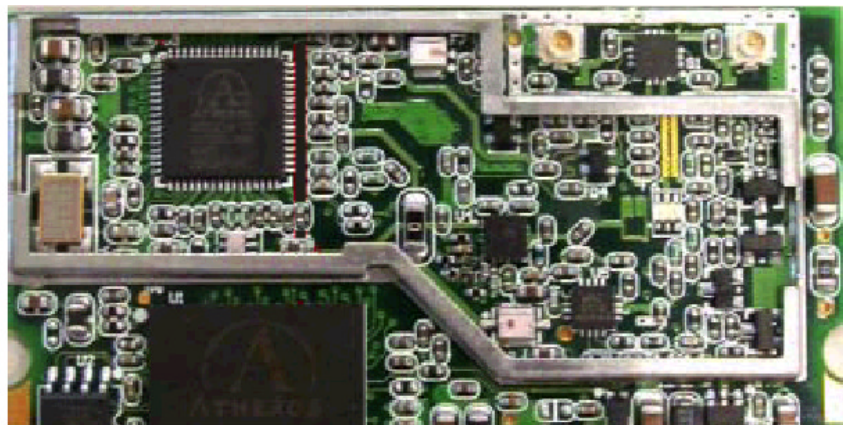
Photograph No.7
Mini PCI card, top view



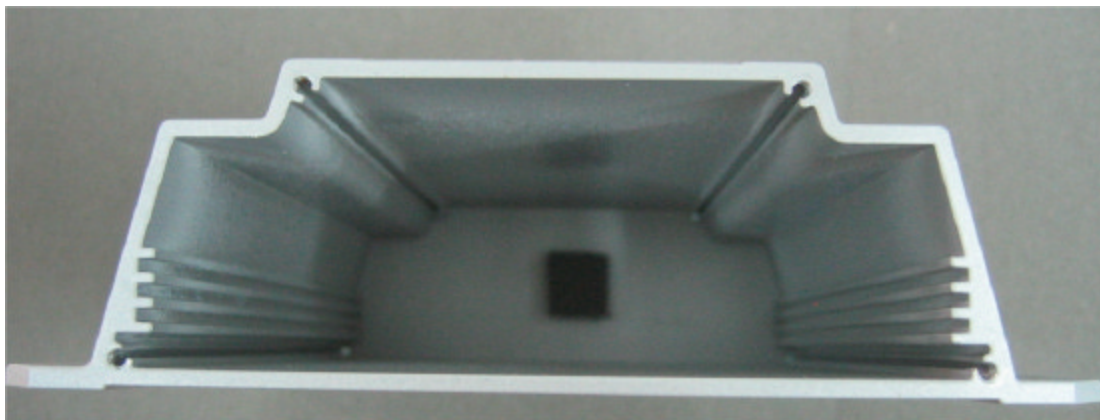
Photograph No.8
Mini PCI card, second side view



Photograph No.9
Mini PCI card view without shield



Photograph No.10
Case internal e view



Photograph No.11
Label of Mini PCI card

