

## **Spectrum Analyzer Display Graphs**

### **IMD Test**

#### **Two Tone Test, Upper/Lower Portions of Band**

**Foxcom Wireless Ltd.**

**FCC ID: OJFLITENNA0LF0SB0**

### **iDEN**

**Modulation Type: GXW**

2 – 16QAM carriers

Bottom: 851.5 MHz, 852 MHz

Top: 867.5 MHz, 868 MHz

Close span (5 MHz) and full span (30 – 10,000 MHz) Displays

Power per carrier: 17 dBm

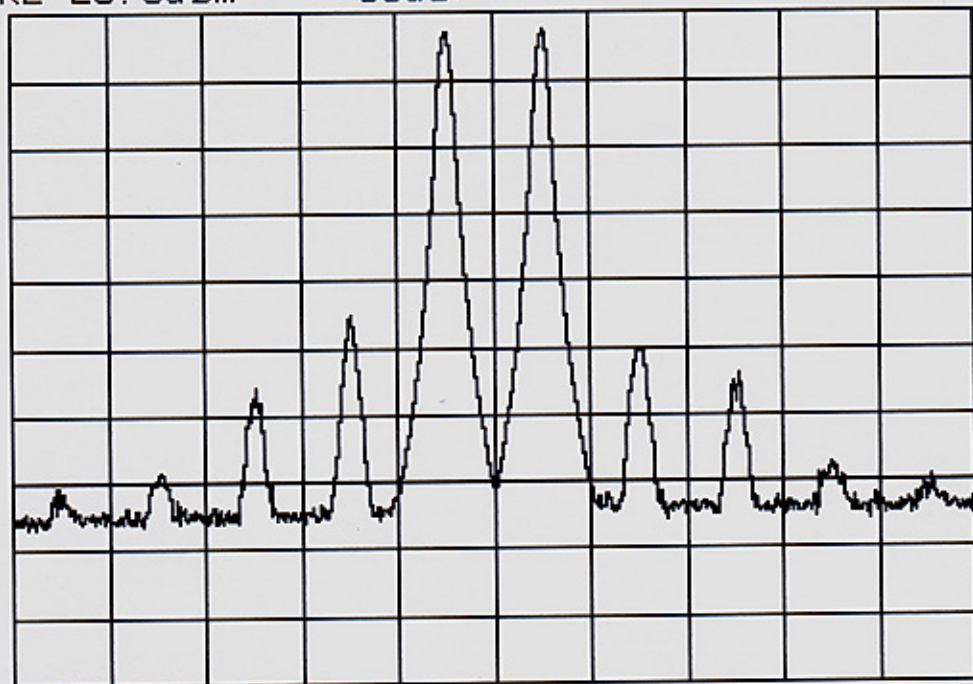
Composite Power: 20 dBm

ATTEN 30dB

RL 20.0dBm

10dB/

D



CENTER 851.750MHz

SPAN 5.000MHz

\*RBW 30kHz

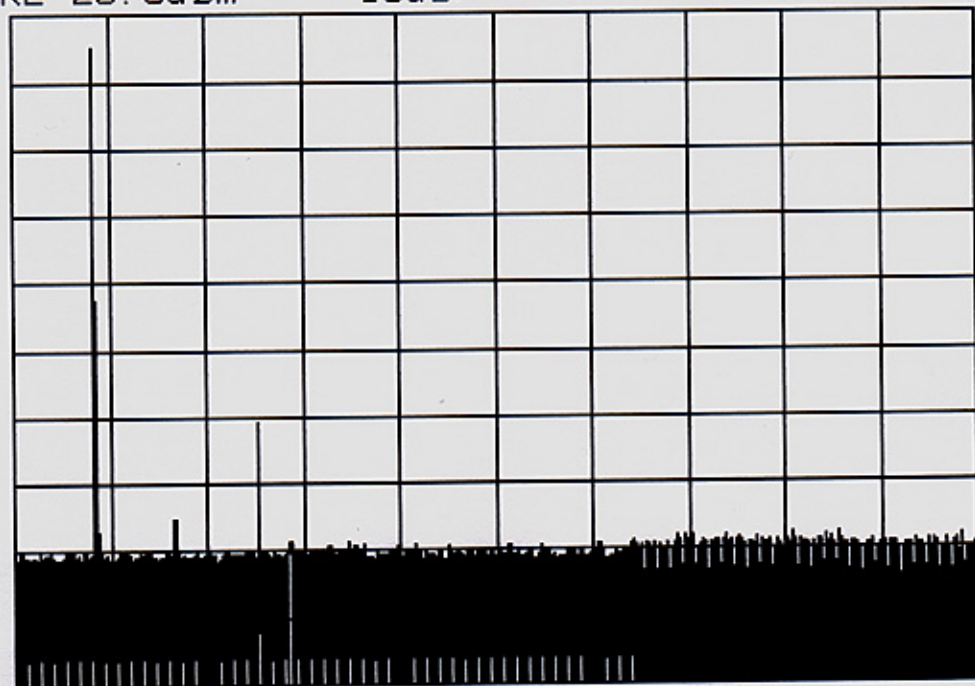
VBW 30kHz

SWP 50.0ms

ATTEN 30dB

RL 20.0dBm

10dB/



START 30MHz

\*RBW 30kHz

STOP 10.000GHz

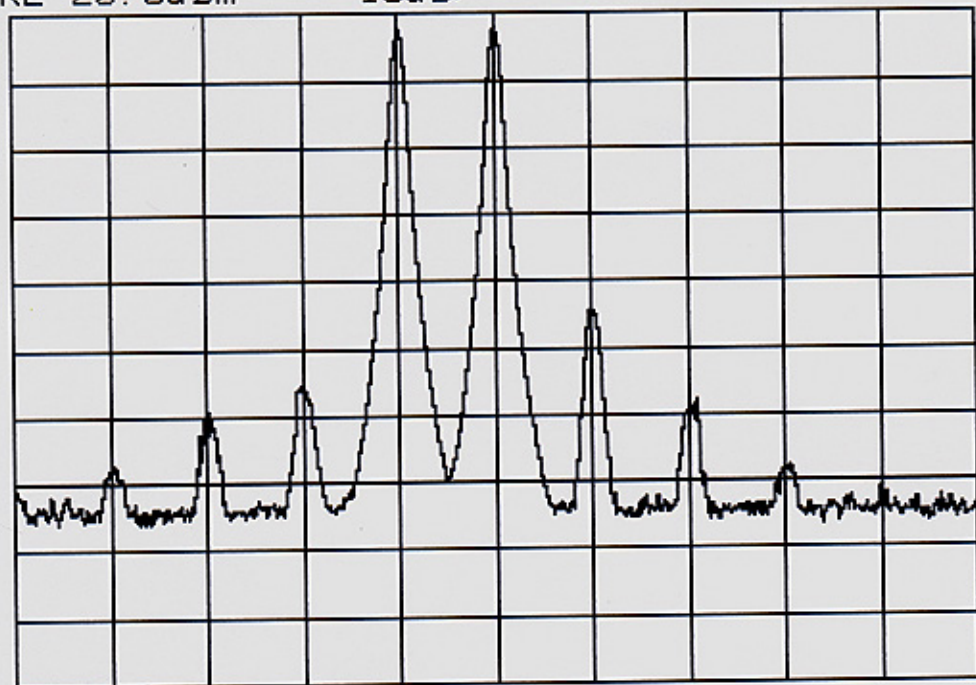
VBW 30kHz

SWP 28.0sec

ATTEN 30dB  
RL 20.0dBm

10dB/

D



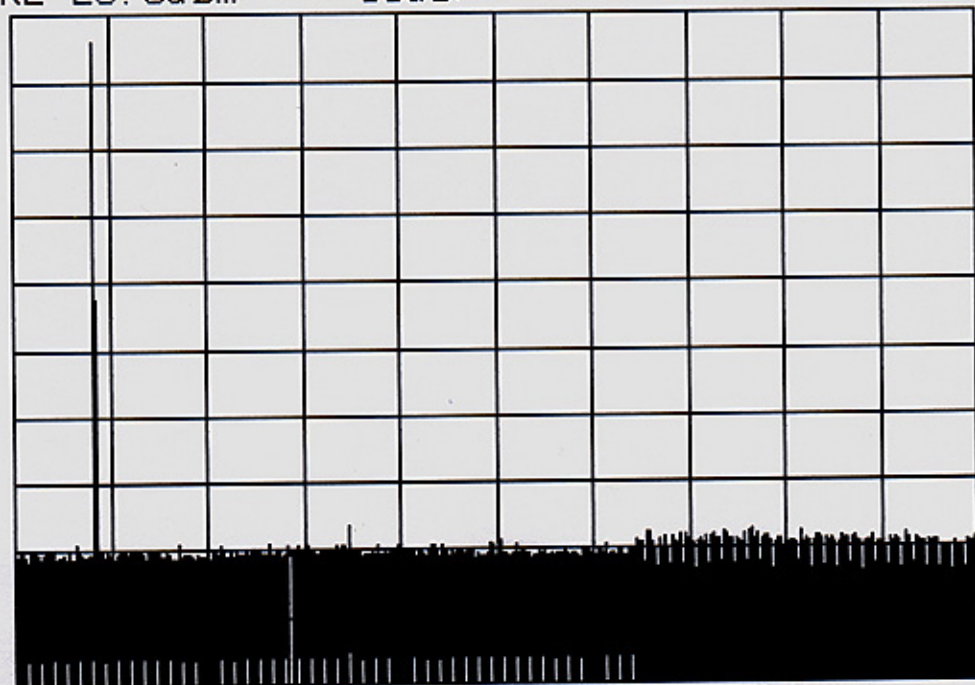
CENTER 868.000MHz  
\*RBW 30kHz VBW 30kHz

SPAN 5.000MHz  
SWP 50.0ms

ATTEN 30dB

RL 20.0dBm

10dB/



START 30MHz

\*RBW 30kHz

STOP 10.000GHz

VBW 30kHz

SWP 28.0sec