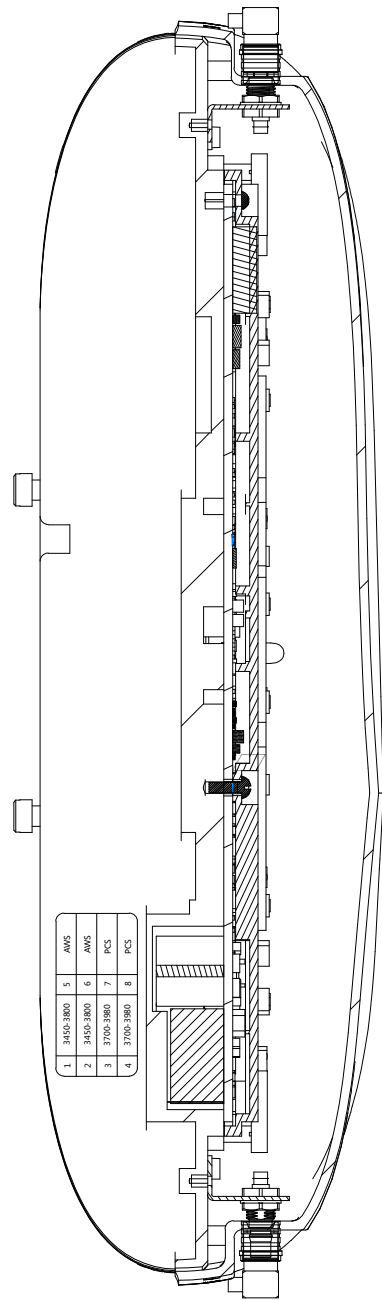
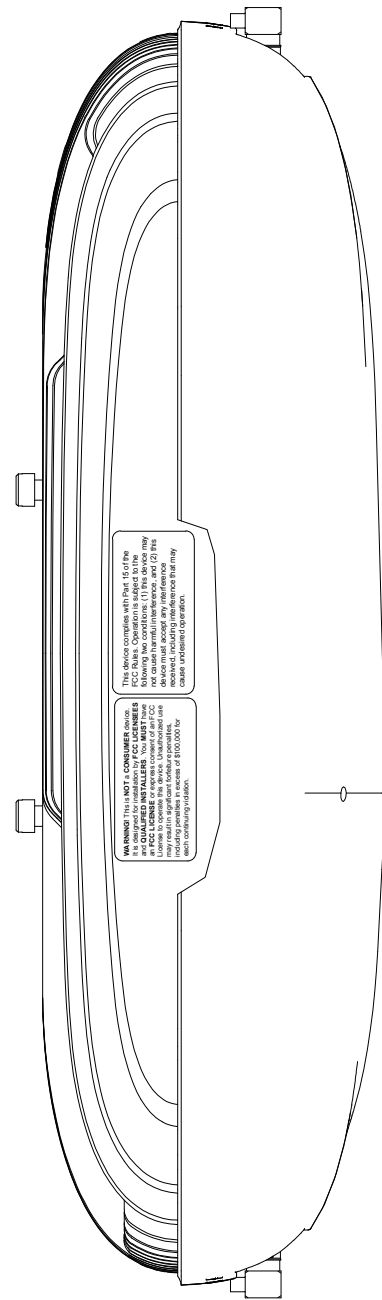


截面 D-D



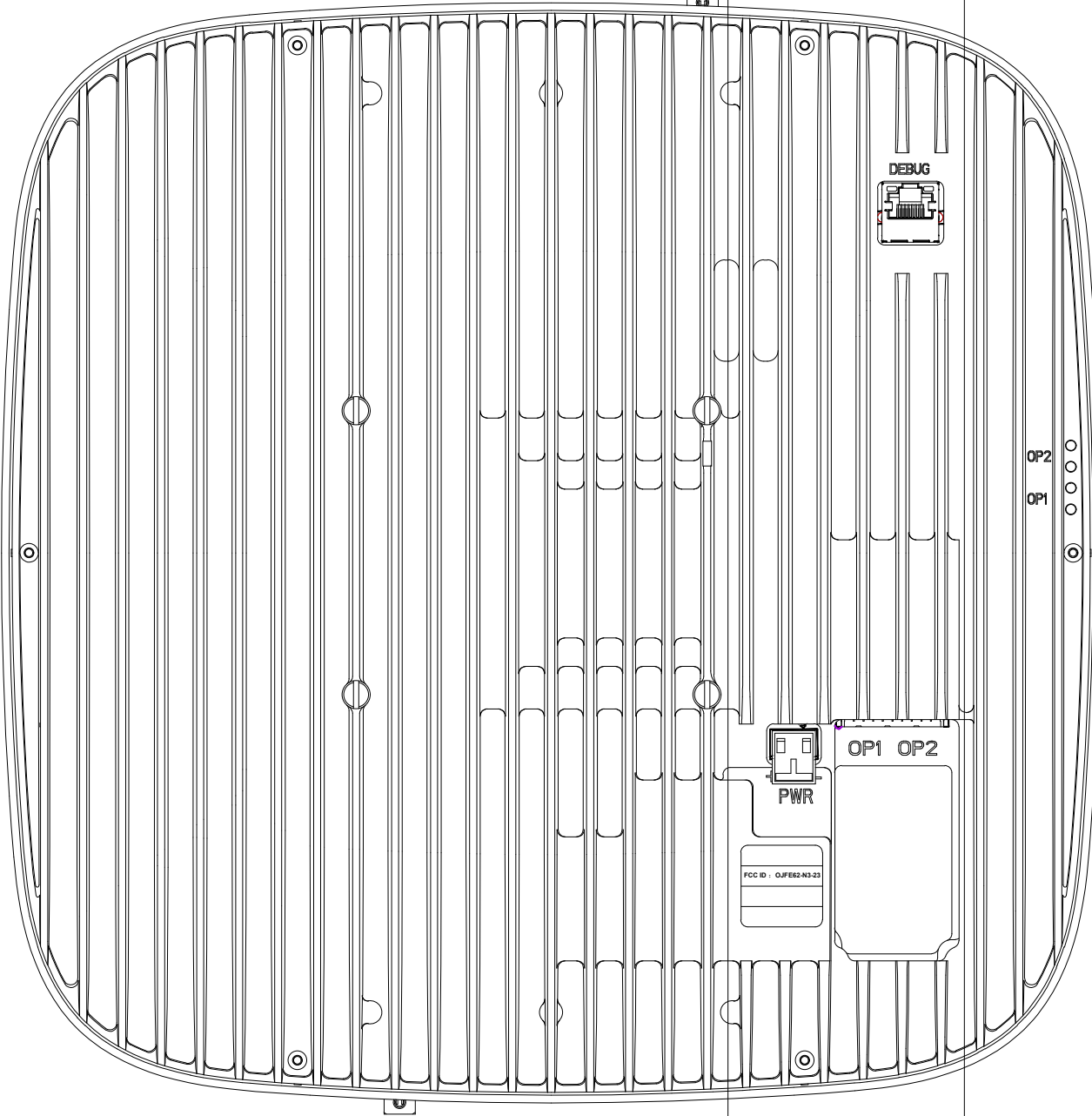
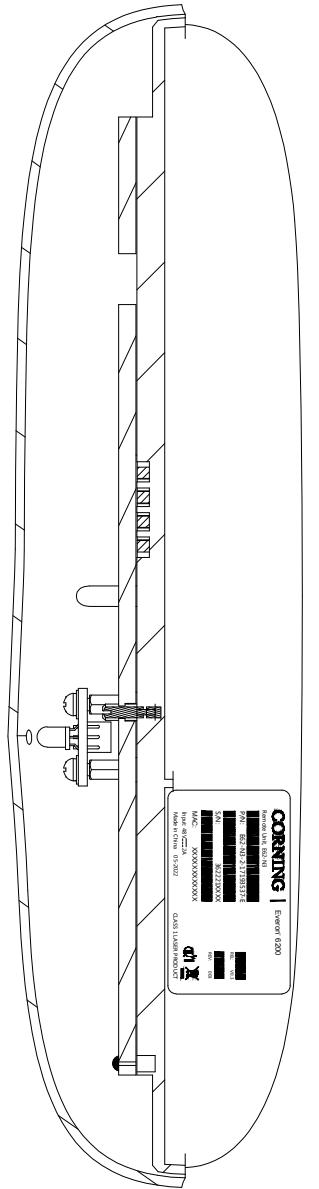
1	3450-3800	5	AWS
2	3450-3800	6	AWS
3	3700-3980	7	PCS
4	3700-3980	8	PCS

A 向



WARNING: This is NOT a CONSUMER device. It is designed for installation by FCC LICENSEES and QUALIFIED INSTALLERS. You MUST have an FCC LICENSE or express consent of an FCC Licensee to operate this device. Unauthorized use may result in significant forfeiture penalties, including penalties in excess of \$100,000 for each continuing violation.

截面 E-E



PWR
OP1 OP2
FCC ID: QJFEE-N3-23

This device complies with Part 15 of the FCC Rules. Operation is subject to the following two conditions: (1) This device may not cause harmful interference, and (2) this device must accept any interference received, including interference that may cause undesired operation.

WARNING: This is NOT a CONSUMER device. It is designed for installation by FCC LICENSEES and QUALIFIED INSTALLERS. You MUST have an FCC LICENSE or express consent of an FCC Licensee to operate this device. Unauthorized use may result in significant forfeiture penalties, including penalties in excess of \$100,000 for each continuing violation.

FCC ID: QJFEE-N3-23

CORNING | Everon® 6200

REL: V0.3
REV: 003

MAC: XXXXXXXXXXXXX

Input: 48V 2A

Made in China 05-2022

CLASS 1 LASER PRODUCT

1	3450-3800	5	AWS
2	3450-3800	6	AWS
3	3700-3980	7	PCS
4	3700-3980	8	PCS

CORNING | Everon® 6200

Remote Unit, E62-N3

P/N: E62-N3-2-17193537-E

S/N: 362221XXXXX

MAC: XXXXXXXXXXXXX

Input: 48V 2A

Made in China 05-2022

CLASS 1 LASER PRODUCT

125

65