

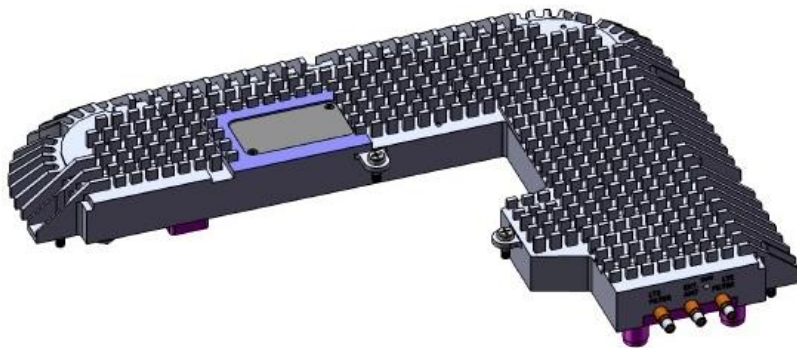
**ONE™ Distributed Antenna System****RXU - Remote Extender Unit****Operational Description****General description**

Figure 1. RXU

RXU is connected to main RAU module through RF and DC Connector. RXU is intended to add two additional frequency bands - LTE (728-757MHz) and AWS (2110-2155MHz) – for MIMO 2x 2 operations. These two frequency bands are filtered and transmitted through additional antenna port via RF connector.

**Detailed description**

For the downlink the additional frequency band LTE and AWS from RAU module are connected to RXU through RF connector and split (via RF splitter) to 2 different LTE and AWS link and attenuate and equalize to bring the RF power level and slope to the right working point, the signal are amplitude via 4 RF amplifier and filter via saw filter (LTE/AWS saw filter) and amplifier with the power amplifier and filter again with LTE and

AWS triplexer to transmit via antenna. In the uplink the signal that receive from antenna (LTE and AWS) are separate to 2 different link by the AWS and LTE triplexer, amplitude and attenuate via low noise amplifier and attenuator to bring the lever to the working point. The signal is amplitude via 3 RF amplifiers and combines the two links with RF combiner and connected to the RAU module with RF connector.