



REPORT

Datum/Date
1998-12-16

Beteckning/Reference
98F52452

Sida/Page
Encl. 7.1

Conducted emission measurements on Reciver part according to 15.107 a)

Date	Temperature	Humidity
24 November, 1998	22 °C ± 3 °C	23 % ± 5 %

Test set-up and Procedure

Measurements were performed on the 230 V phase and neutral. The measurements were performed on the primary side of the transformer Tufvasson 230 VAC/ 14 VAC 50 Hz. The measurement is first performed with peak detector. Emission on frequencies close to or above the limit is controlled with quasi-peak and/or average detector.

Measurement equipment	SP number
Anechoic chamber	8:312
R&S ESAI	502 199
Compaq Presario	501 516
Software: R&S ES-K1, ver. 1.40c	
Schwartzbeck NNLK 8121 (LISN)	502 112
Testo 610, Temperature and humidity meter	502 658

Results

The emission spectra can be found in the following enclosures:

Enclosure 7.3: 450 kHz-30 MHz

The emission found during the measurements with the quasi-peak detector (represented by the "X" in emission spectra) can be found in the following table:

Frequency (MHz)	Amplitude (dBμV)	Limit (dBμV)	Compliant
3.315	42.1	48	Yes
3.435	48.81	48	No
3.462	45.15	48	Yes
3.533	47.26	48	Yes
3.564	50.84	48	No
3.595	47.39	48	Yes
3.688	48.40	48	No
9.805	40.22	48	Yes
9.944	41.26	48	Yes
15.333	30.03	48	Yes



REPORT

Datum/Date
1998-12-16

Beteckning/Reference
98F52452

Sida/Page
Encl. 7.2

The emission found during the measurements with the average detector (represented by the “+” in emission spectra) can be found in the following table:

Frequency (MHz)	Amplitude (dBμV)	Limit (dBμV)	Compliant
3.315	29.61	48	Yes
3.435	35.60	48	Yes
3.462	33.06	48	Yes
3.533	31.64	48	Yes
3.564	34.31	48	Yes
3.595	34.26	48	Yes
3.688	31.87	48	Yes
9.805	28.46	48	Yes
9.944	26.38	48	Yes
15.333	25.51	48	Yes

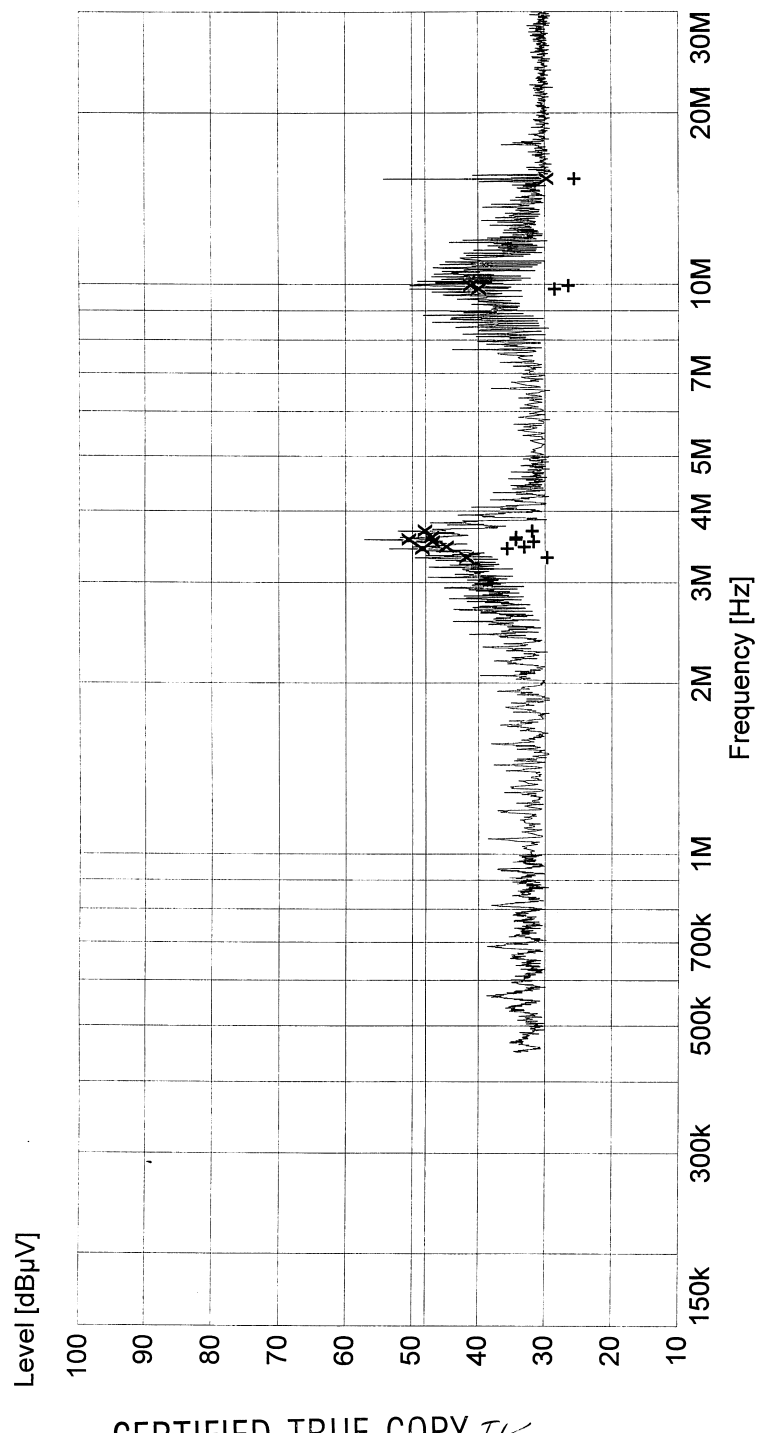
Limits

According to 15.107 a , the limit is 48 dBμV. If the conducted emission exceeds the limit in 15.107 a , the following option is available according to 15.107 d:

If the level of emission measured using the quasi-peak detector is 6 dB, or more, higher than the level of the same emission measured with average detector and a 9 kHz minimum bandwidth, that emission is considered broadband and the level obtained with quasi-peak detector may be reduced by 13 dB for comparison to the limits.

Emission below limit?	Yes
-----------------------	-----

CERTIFIED BY



x x x	MES	TB981124-11_fin QP
+	+	TB981124-11_fin AV
—	MES	_pre PK
—	MES	_pre PK
—	LIM	FCC VOLTAGE
—	LIM	FCC VOLTAGE