

Module BW2155 Pictures

The BW2155 model has two part numbers, BW2155A and BW2155B. The RF functionality of both of these modules is exactly the same.

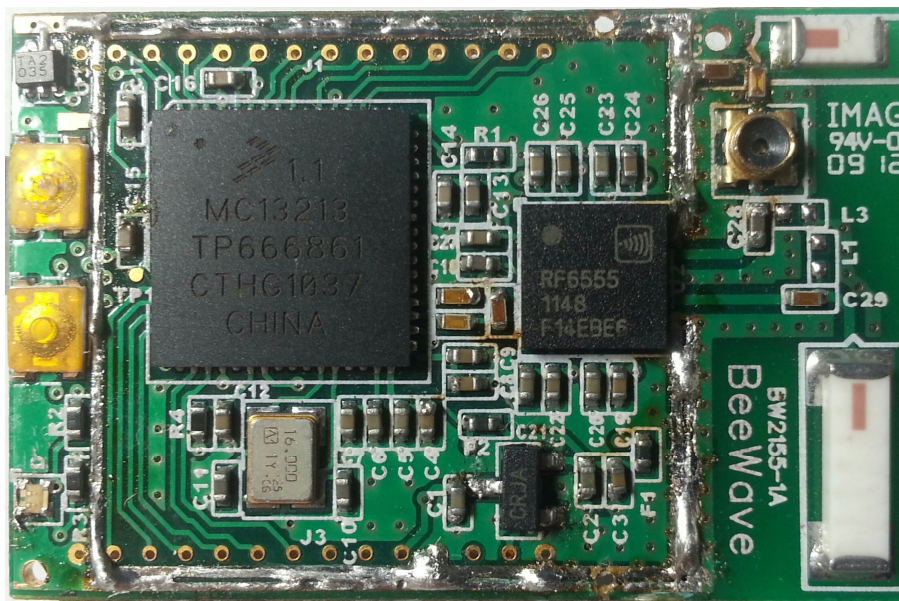
The part number BW2155A has a μ USB connector, two pushbuttons, two LEDs, and a temperature sensor. The μ USB connector can be used to program the module and to connect it to a power supply, such as USB adapter. The pushbutton and LEDs are helpful in debugging, programming and monitoring the activities of the transceiver.

The second part number, BW2155B, does not have the μ USB connector, pushbuttons, or temperature sensor. Module BW2155B can be integrated onto a motherboard of another system by soldering techniques.

(1) Module BW2155A



BW2155A Top View with Shield



BW2155A Top View without Shield

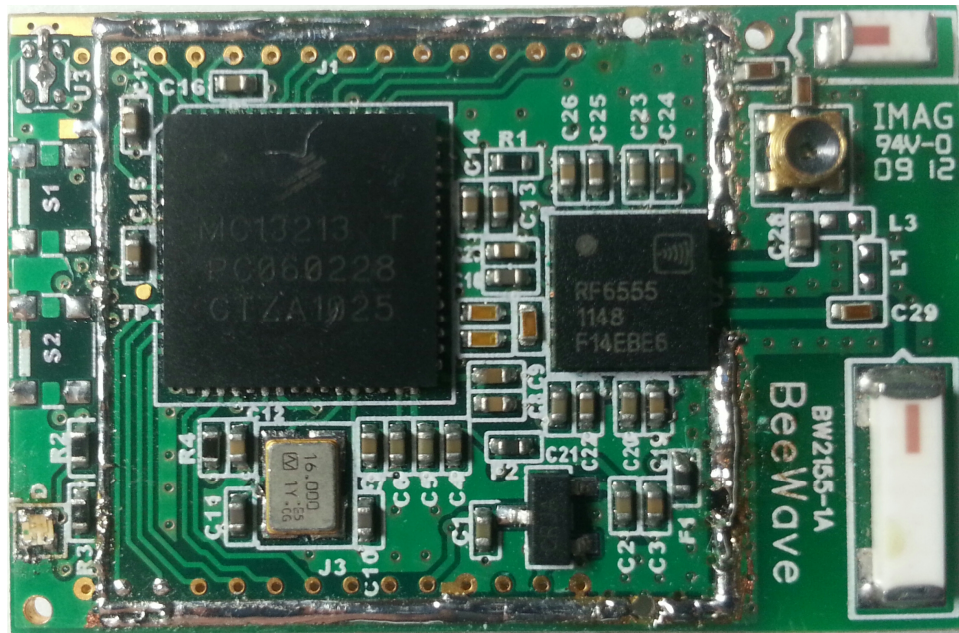


BW2155A Bottom View showing the μ USB connector

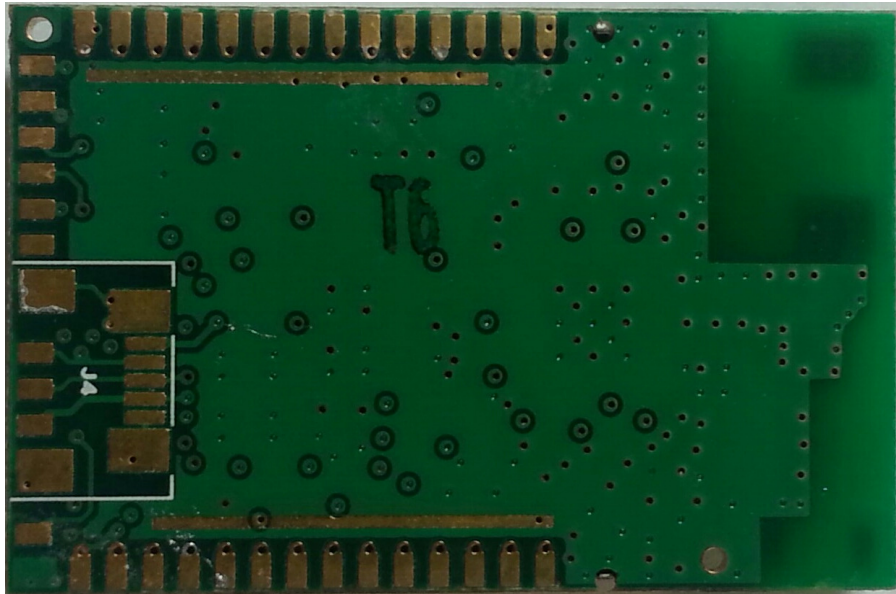
(2) Module BW2155B



BW2155B Top View with Shield



BW2155B Top View without Shield



BW2155B Bottom View