



TEST REPORT

FOR FCC PART 15 SUBPART C 15.249

Report Reference No. : **CTL1811201041-WF**

Compiled by:
(position+printed name+signature)

Happy Guo
(File administrators)

Happy Guo

Tested by:
(position+printed name+signature)

Nice Nong
(Test Engineer)

Nice Nong

Approved by:
(position+printed name+signature)

Ivan Xie
(Manager)

Ivan Xie

Product Name : 2.4G Wireless mouse

Model/Type reference : G-526

List Model(s)..... : G-529, G-531, G-532, G-535, G-219, A2G, KA8, PMW3212,
PMW3205, PMW3204UL, MX8650, YS8009

Trade Mark..... : Indena Ihome G-sedo

FCC ID..... : OIHG-526

Applicant's name : **Shenzhen Leader-union Technology Co., Ltd**

Address of applicant : 3F, No. 90, Alley 5, Hekan Village, Ban Tian, LongGang District,
Shenzhen, China

Test Firm..... : **Shenzhen CTL Testing Technology Co., Ltd.**

Address of Test Firm : Floor 1-A, Baisha Technology Park, No.3011, Shahehexi Road,
Nanshan District, Shenzhen, China 518055

Test specification..... :

Standard : **FCC Part 15.249**:Operation within the bands 920-928 MHz,
2400-2483.5 MHz, 5725-5850 MHz and 24.0 - 24.25 GHz.

TRF Originator : Shenzhen CTL Testing Technology Co., Ltd.

Master TRF : Dated 2011-01

Date of Receipt..... : Dec. 12, 2018

Date of Test Date..... : Dec. 13, 2018–Jan. 13, 2019

Data of Issue..... : Jan. 14, 2019

Result..... : **Pass**

Shenzhen CTL Testing Technology Co., Ltd. All rights reserved.

This publication may be reproduced in whole or in part for non-commercial purposes as long as the Shenzhen CTL Testing Technology Co., Ltd. is acknowledged as copyright owner and source of the material. Shenzhen CTL Testing Technology Co., Ltd. takes no responsibility for and will not assume liability for damages resulting from the reader's interpretation of the reproduced material due to its placement and context.

TEST REPORT

| | | |
|--------------------------|-------------------------|---------------|
| Test Report No. : | CTL1811201041-WF | Jan. 14, 2019 |
| | | Date of issue |

Equipment under Test : 2.4G Wireless mouse

Model /Type : G-526

Listed Models : G-529, G-531, G-532, G-535, G-219, A2G, KA8, PMW3212, PMW3205, PMW3204UL, MX8650, YS8009

Applicant : **Shenzhen Leader-union Technology Co., Ltd**

Address : 3F, No. 90, Alley 5, Hekan Village, Ban Tian, LongGang District, Shenzhen, China

Manufacturer : **Dongguan Indena Electronic Technology Co., Ltd.**

Address : No. 6, 7th Road Gaoli Qinghutou Community, Tangxia Town, Dongguan, China

| | |
|--------------------|---------------|
| Test result | Pass * |
|--------------------|---------------|

* In the configuration tested, the EUT complied with the standards specified page 5.

The test report merely corresponds to the test sample.

It is not permitted to copy extracts of these test result without the written permission of the test laboratory.

Table of Contents

Page

1. SUMMARY 5

1.1. TEST STANDARDS 5

1.2. TEST DESCRIPTION 5

1.3. TEST FACILITY 6

1.4. STATEMENT OF THE MEASUREMENT UNCERTAINTY 6

2. GENERAL INFORMATION 7

2.1. ENVIRONMENTAL CONDITIONS 7

2.2. GENERAL DESCRIPTION OF EUT 7

2.3. DESCRIPTION OF TEST MODES AND TEST FREQUENCY 7

2.4. EQUIPMENTS USED DURING THE TEST 8

2.5. RELATED SUBMITTAL(S) / GRANT(S) 8

2.6. MODIFICATIONS 8

3. TEST CONDITIONS AND RESULTS 9

3.1. CONDUCTED EMISSIONS TEST 9

3.2. RADIATED EMISSIONS AND BAND EDGE 10

3.3. OCCUPIED BANDWIDTH MEASUREMENT 16

3.4. ANTENNA REQUIREMENT 18

4. TEST SETUP PHOTOS OF THE EUT 19

5. EXTERNAL AND INTERNAL PHOTOS OF THE EUT 20

1. SUMMARY

1.1. TEST STANDARDS

The tests were performed according to following standards:

[FCC Rules Part 15.249](#): Operation within the bands 902 - 928 MHz, 2400 - 2483.5 MHz, 5725 - 5875 MHz, and 24.0 - 24.25 GHz.

[ANSI C63.10:2013](#) : American National Standard for Testing Unlicensed Wireless Devices

1.2. Test Description

| FCC PART 15.249 | | |
|--------------------|-------------------------------|------|
| FCC Part 15.249(a) | Field Strength of Fundamental | PASS |
| FCC Part 15.209 | Spurious Emission | PASS |
| FCC Part 15.209 | Band edge | PASS |
| FCC Part 15.215(c) | 20dB bandwidth | PASS |
| FCC Part 15.207 | Conducted Emission | N/A |
| FCC Part 15.203 | Antenna Requirement | PASS |

1.3. Test Facility

1.3.1 Address of the test laboratory

Shenzhen CTL Testing Technology Co., Ltd.

Floor 1-A, Baisha Technology Park, No. 3011, Shahexi Road, Nanshan, Shenzhen 518055 China

The 3m-Semi anechoic test site fulfils CISPR 16-1-4 according to ANSI C63.4:2014 and CISPR 16-1-4:2010 SVSWR requirement for radiated emission above 1GHz.

1.3.2 Laboratory accreditation

The test facility is recognized, certified, or accredited by the following organizations:

IC Registration No.: 9618B

The 3m alternate test site of Shenzhen CTL Testing Technology Co., Ltd. EMC Laboratory has been registered by Certification and Engineer Bureau of Industry Canada for the performance of with Registration No.: 9618B on November 13, 2013.

FCC-Registration No.: 399832

Shenzhen CTL Testing Technology Co., Ltd. EMC Laboratory has been registered and fully described in a report filed with the (FCC) Federal Communications Commission. The acceptance letter from the FCC is maintained in our files. Registration 399832, December 08, 2017.

1.4. Statement of the measurement uncertainty

The data and results referenced in this document are true and accurate. The reader is cautioned that there may be errors within the calibration limits of the equipment and facilities. The measurement uncertainty was calculated for all measurements listed in this test report acc. to CISPR 16 - 4 „Specification for radio disturbance and immunity measuring apparatus and methods – Part 4: Uncertainty in EMC Measurements“ and is documented in the Shenzhen CTL Testing Technology Co., Ltd. quality system acc. to DIN EN ISO/IEC 17025. Furthermore, component and process variability of devices similar to that tested may result in additional deviation. The manufacturer has the sole responsibility of continued compliance of the device.

Hereafter the best measurement capability for CTL laboratory is reported:

| Test | Range | Measurement Uncertainty | Notes |
|-----------------------|------------|-------------------------|-------|
| Radiated Emission | 30~1000MHz | 4.10dB | (1) |
| Radiated Emission | Above 1GHz | 4.32dB | (1) |
| Conducted Disturbance | 0.15~30MHz | 3.20dB | (1) |

(1) This uncertainty represents an expanded uncertainty expressed at approximately the 95% confidence level using a coverage factor of k=2.

2. GENERAL INFORMATION

2.1. Environmental conditions

During the measurement the environmental conditions were within the listed ranges:

| | |
|---------------------|---------|
| Normal Temperature: | 25°C |
| Relative Humidity: | 55 % |
| Air Pressure: | 101 kPa |

2.2. General Description of EUT

| | |
|------------------------|---------------------|
| Product Name: | 2.4G Wireless mouse |
| Model/Type reference: | G-526 |
| Power supply: | DC3.0V from battery |
| 2.4GHz Wireless | |
| Modulation: | GFSK |
| Operation frequency: | 2402MHz~2480MHz |
| Channel number: | 40 |
| Channel separation: | 1MHz |
| Antenna type: | PCB antenna |
| Antenna gain: | 0dBi |

Note: For more details, please refer to the user's manual of the EUT.

2.3. Description of Test Modes and Test Frequency

The Applicant provides communication tools software to control the EUT for staying in continuous transmitting (Duty Cycle more than 98%) and receiving mode for testing .There are 40 channels provided to the EUT and Channel 00/19/39 were selected for testing.

Operation Frequency List :

| Channel | Frequency (MHz) |
|-----------|-----------------|
| 00 | 2402 |
| 01 | 2404 |
| 02 | 2406 |
| : | : |
| 19 | 2440 |
| : | : |
| 37 | 2476 |
| 38 | 2478 |
| 39 | 2480 |

Note: The line display in grey is the channel selected to perform test.

2.4. Equipments Used during the Test

| Test Equipment | Manufacturer | Model No. | Serial No. | Calibration Date recent | Calibration Due Date |
|----------------------------|----------------------|-----------------------|--------------|-------------------------|----------------------|
| LISN | R&S | ENV216 | 3560.6550.12 | 2018/06/01 | 2019/05/31 |
| LISN | R&S | ESH2-Z5 | 860014/010 | 2018/06/01 | 2019/05/31 |
| Power Meter | Agilent | U2531A | TW53323507 | 2018/06/01 | 2019/05/31 |
| Power Sensor | Agilent | U2021XA | MY5365004 | 2018/05/20 | 2019/05/19 |
| EMI Test Receiver | R&S | ESCI | 103710 | 2018/06/01 | 2019/05/31 |
| Spectrum Analyzer | Agilent | E4407B | MY41440676 | 2018/05/20 | 2019/05/19 |
| Spectrum Analyzer | Agilent | N9020 | US46220290 | 2018/01/16 | 2019/01/15 |
| Controller | EM Electronics | Controller EM 1000 | N/A | 2018/05/20 | 2019/05/19 |
| Active Loop Antenna | Daze | ZN30900A | N/A | 2018/05/18 | 2019/05/17 |
| Bilog Antenna | Schwarzbeck | VULB 9168 | 00824 | 2018/10/25 | 2019/10/24 |
| Horn Antenna | Sunol Sciences Corp. | DRH-118 | A062013 | 2018/05/18 | 2019/05/17 |
| Horn Antenna | SCHWARZBACK | BBHA 9170 | BBHA9170184 | 2018/05/18 | 2019/05/17 |
| Amplifier | Agilent | 8349B | 3008A02306 | 2018/05/18 | 2019/05/17 |
| Amplifier | Agilent | 8447D | 2944A10176 | 2018/05/18 | 2019/05/17 |
| Temperature/Humidity Meter | Gangxing | CTH-608 | 02 | 2018/05/19 | 2019/05/18 |
| High-Pass Filter | K&L | 9SH10-2700/X12750-O/O | N/A | 2018/05/19 | 2019/05/18 |
| High-Pass Filter | K&L | 41H10-1375/U12750-O/O | N/A | 2018/05/19 | 2019/05/18 |
| Coaxial Cables | HUBER+SUHNER | SUCOFLEX 104PEA-10M | 10m | 2018/06/01 | 2019/05/31 |
| Coaxial Cables | HUBER+SUHNER | SUCOFLEX 104PEA-3M | 3m | 2018/06/01 | 2019/05/31 |
| Coaxial Cables | HUBER+SUHNER | SUCOFLEX 104PEA-3M | 3m | 2018/06/01 | 2019/05/31 |
| RF Cable | Megalon | RF-A303 | N/A | 2018/06/01 | 2019/05/31 |
| EMI Test Software | R&S | ES-K1 | V1.7.1 | 2018/06/01 | 2019/05/31 |
| EMI Test Software | AUDIX | E3 | V6.0 | 2018/06/01 | 2019/05/31 |

The calibration interval was one year

2.5. Special Accessories

| Manufacturer | Description | Model | Serial Number | Certificate |
|--------------|-------------|---------|---------------|---------------------|
| ASUS | Notebook PC | FL5900U | 9014 | FCC ID:PPD-QCNFA335 |
| / | / | / | / | / |

2.6. Related Submittal(s) / Grant(s)

This submittal(s) (test report) is intended to comply with Section 15.249 of the FCC Part 15, Subpart C Rules.

2.7. Modifications

No modifications were implemented to meet testing criteria.

3. TEST CONDITIONS AND RESULTS

3.1. Conducted Emissions Test

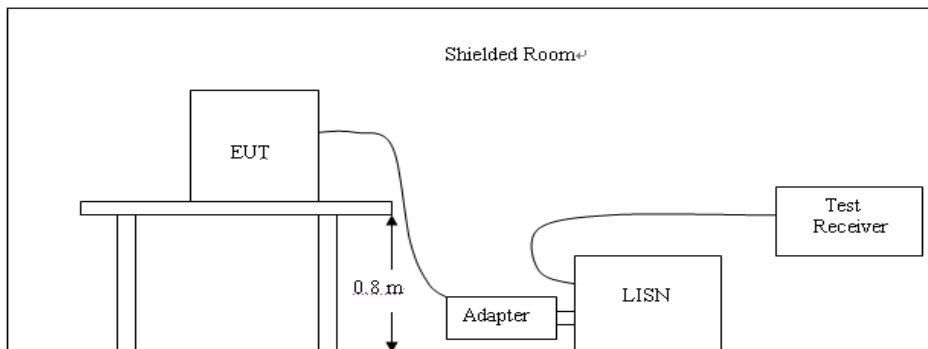
LIMIT

FCC CFR Title 47 Part 15 Subpart C Section 15.207

| Frequency range (MHz) | Limit (dBuV) | |
|-----------------------|--------------|-----------|
| | Quasi-peak | Average |
| 0.15-0.5 | 66 to 56* | 56 to 46* |
| 0.5-5 | 56 | 46 |
| 5-30 | 60 | 50 |

* Decreases with the logarithm of the frequency.

TEST CONFIGURATION



TEST PROCEDURE

1. The equipment was set up as per the test configuration to simulate typical actual usage per the user's manual. The EUT is a tabletop system; a wooden table with a height of 0.8 meters is used and is placed on the ground plane as per ANSI C63.10:2013.
2. Support equipment, if needed, was placed as per ANSI C63.10:2013.
3. All I/O cables were positioned to simulate typical actual usage as per ANSI C63.10:2013.
4. If a EUT received DC power from the USB Port of Notebook PC, the PC's adapter received AC120V/60Hz power through a Line Impedance Stabilization Network (LISN) which supplied power source and was grounded to the ground plane.
5. All support equipments received AC power from a second LISN, if any.
6. The EUT test program was started. Emissions were measured on each current carrying line of the EUT using a spectrum Analyzer / Receiver connected to the LISN powering the EUT. The LISN has two monitoring points: Line 1 (Hot Side) and Line 2 (Neutral Side). Two scans were taken: one with Line 1 connected to Analyzer / Receiver and Line 2 connected to a 50 ohm load; the second scan had Line 1 connected to a 50 ohm load and Line 2 connected to the Analyzer / Receiver.
7. Analyzer / Receiver scanned from 150 KHz to 30MHz for emissions in each of the test modes.
8. During the above scans, the emissions were maximized by cable manipulation.

TEST RESULTS

Not applicable to this device.

3.2. Radiated Emissions and Band Edge

Limit

According 15.249, the field strength of emissions from intentional radiators operated within 2400MHz-2483.5 MHz shall not exceed 94dBµV/m (50mV/m):

FCC PART 15.249(d) Emissions radiated outside of the specified frequency bands, except for harmonics, shall be attenuated by at least 50 dB below the level of the fundamental or to the general radiated emission limits in §15.209, whichever is the lesser attenuation.

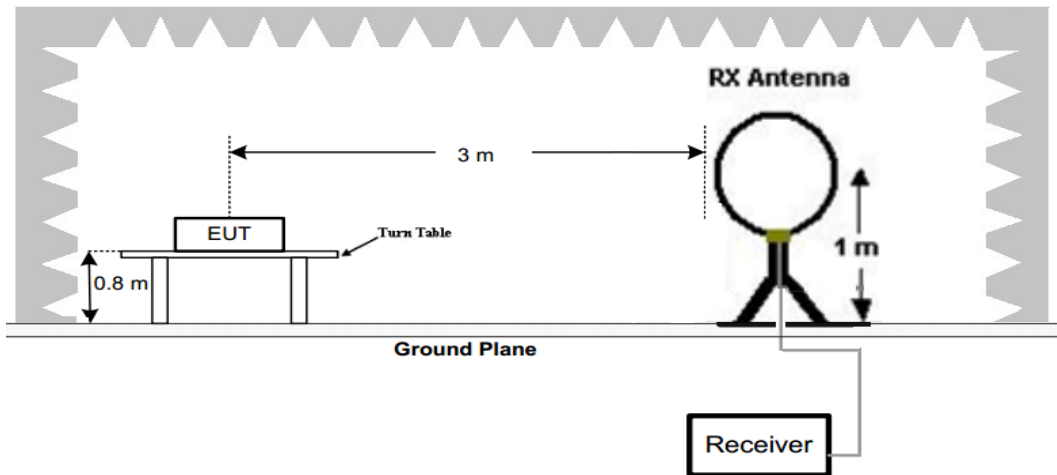
In addition, radiated emissions which fall in the restricted bands, as defined in §15.205(a), must also comply with the radiated emission limits specified in §15.209(a)

Radiated emission limits

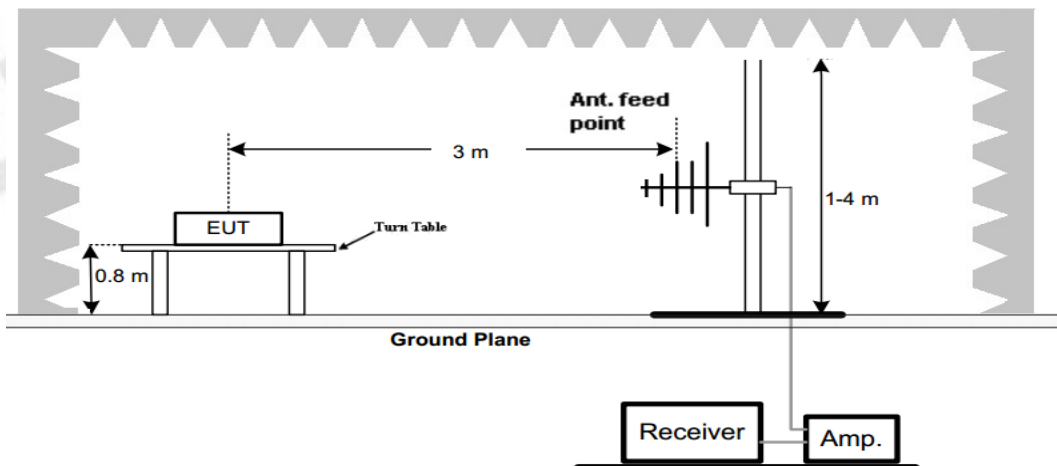
| Frequency (MHz) | Distance (Meters) | Radiated (dBµV/m) | Radiated (µV/m) |
|-----------------|-------------------|---|-----------------------|
| 0.009-0.49 | 3 | $20\log(2400/F(\text{KHz}))+40\log(300/3)$ | $2400/F(\text{KHz})$ |
| 0.49-1.705 | 3 | $20\log(24000/F(\text{KHz}))+ 40\log(30/3)$ | $24000/F(\text{KHz})$ |
| 1.705-30 | 3 | $20\log(30)+ 40\log(30/3)$ | 30 |
| 30-88 | 3 | 40.0 | 100 |
| 88-216 | 3 | 43.5 | 150 |
| 216-960 | 3 | 46.0 | 200 |
| Above 960 | 3 | 54.0 | 500 |

TEST CONFIGURATION

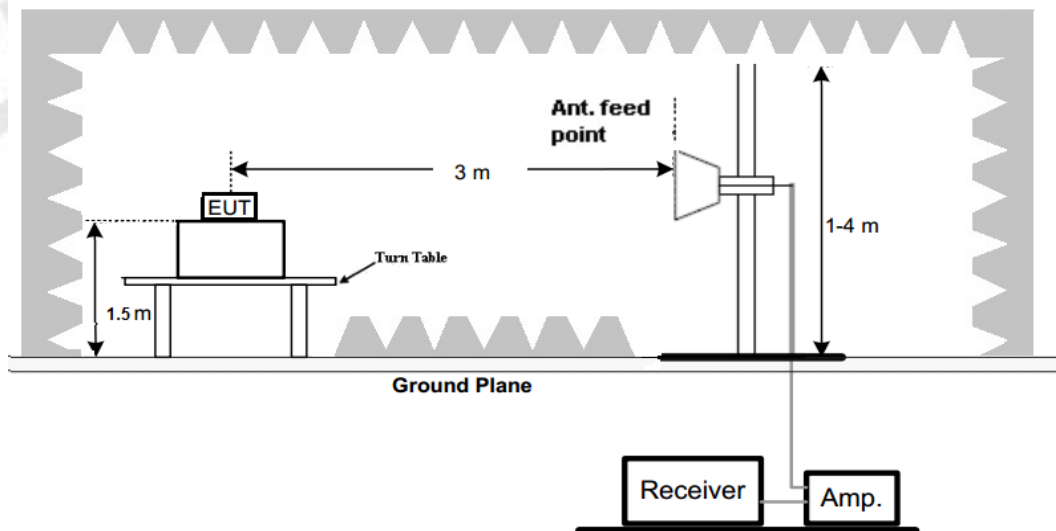
(A) Radiated Emission Test Set-Up, Frequency Below 30MHz



(B) Radiated Emission Test Set-Up, Frequency below 1000MHz



(C) Radiated Emission Test Set-Up, Frequency above 1000MHz

**Test Procedure**

- Below 1GHz measurement the EUT is placed on a turntable which is 0.8m above ground plane, and above 1GHz measurement EUT was placed on a low permittivity and low loss tangent turn table which is 1.5m above ground plane.
- Maximum procedure was performed by raising the receiving antenna from 1m to 4m and rotating the turn table from 0° to 360° to acquire the highest emissions from EUT
- And also, each emission was to be maximized by changing the polarization of receiving antenna both horizontal and vertical.
- Repeat above procedures until all frequency measurements have been completed.
- Radiated emission test frequency band from 9KHz to 25GHz.
- The distance between test antenna and EUT as following table states:

| Test Frequency range | Test Antenna Type | Test Distance |
|----------------------|---------------------|---------------|
| 9KHz-30MHz | Active Loop Antenna | 3 |
| 30MHz-1GHz | Bilog Antenna | 3 |
| 1GHz-18GHz | Horn Antenna | 3 |
| 18GHz-25GHz | Horn Antenna | 1 |

- Setting test receiver/spectrum as following table states:

| Test Frequency range | Test Receiver/Spectrum Setting | Detector |
|----------------------|---|----------|
| 9KHz-150KHz | RBW=200Hz/VBW=3KHz, Sweep time=Auto | QP |
| 150KHz-30MHz | RBW=9KHz/VBW=100KHz, Sweep time=Auto | QP |
| 30MHz-1GHz | RBW=120KHz/VBW=1000KHz, Sweep time=Auto | QP |
| 1GHz-40GHz | Peak Value: RBW=1MHz/VBW=3MHz, Sweep time=Auto Average Value: RBW=1MHz/VBW=10Hz, Sweep time=Auto | Peak |

TEST RESULTS**Remark:**

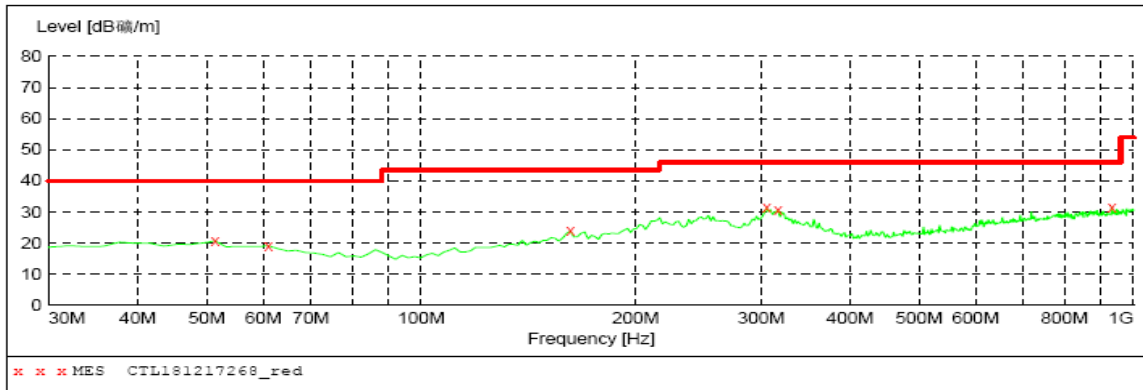
- We measured Radiated Emission at GFSK mode from 9 KHz to 25GHz and recorded worst case.
- For below 1GHz testing recorded worst at GFSK low channel.
- Radiated emission test from 9 KHz to 10th harmonic of fundamental was verified, and no emission found except system noise floor in 9 KHz to 30MHz and not recorded in this report.

For 30MHz-1GHz

Horizontal

SWEEP TABLE: "test (30M-1G)"

| Short Description: | | Field Strength | | | |
|--------------------|---------|----------------|------------|-----------|------------|
| Start | Stop | Detector | Meas. Time | IF Bandw. | Transducer |
| 30.0 MHz | 1.0 GHz | MaxPeak | 200.0 ms | 120 kHz | VULB 9168 |



MEASUREMENT RESULT: "CTL181217268_red"

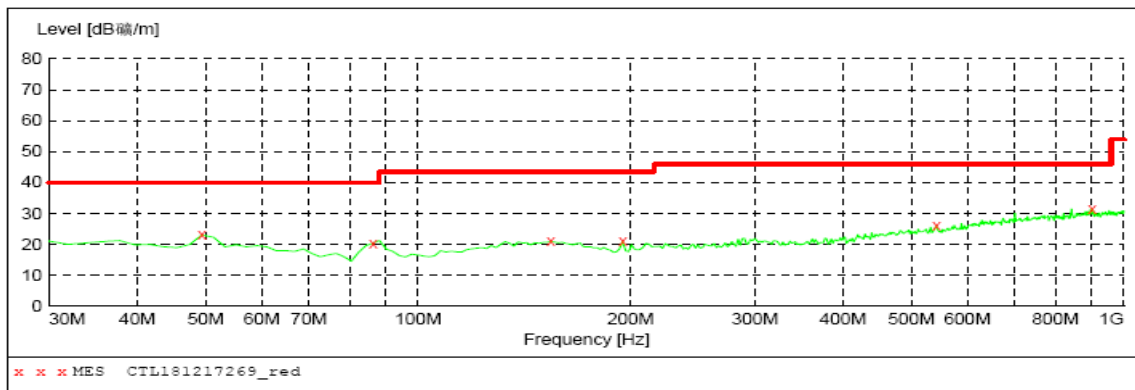
2018-12-18 8:59

| Frequency MHz | Level dB/m | Transd dB | Limit dB/m | Margin dB | Det. | Height cm | Azimuth deg | Polarization |
|---------------|------------|-----------|------------|-----------|------|-----------|-------------|--------------|
| 51.340000 | 20.80 | 14.1 | 40.0 | 19.2 | --- | 0.0 | 0.00 | HORIZONTAL |
| 61.040000 | 19.20 | 13.2 | 40.0 | 20.8 | --- | 0.0 | 0.00 | HORIZONTAL |
| 161.920000 | 23.90 | 15.0 | 43.5 | 19.6 | --- | 0.0 | 0.00 | HORIZONTAL |
| 305.480000 | 31.30 | 14.3 | 46.0 | 14.7 | --- | 0.0 | 0.00 | HORIZONTAL |
| 317.120000 | 30.50 | 14.6 | 46.0 | 15.5 | --- | 0.0 | 0.00 | HORIZONTAL |
| 932.100000 | 31.60 | 24.1 | 46.0 | 14.4 | --- | 0.0 | 0.00 | HORIZONTAL |

Vertical

SWEEP TABLE: "test (30M-1G)"

| Short Description: | | Field Strength | | | |
|--------------------|---------|----------------|------------|-----------|------------|
| Start | Stop | Detector | Meas. Time | IF Bandw. | Transducer |
| 30.0 MHz | 1.0 GHz | MaxPeak | 200.0 ms | 120 kHz | VULB 9168 |



MEASUREMENT RESULT: "CTL181217269_red"

2018-12-18 9:01

| Frequency MHz | Level dB/m | Transd dB | Limit dB/m | Margin dB | Det. | Height cm | Azimuth deg | Polarization |
|---------------|------------|-----------|------------|-----------|------|-----------|-------------|--------------|
| 49.400000 | 23.10 | 14.2 | 40.0 | 16.9 | --- | 0.0 | 0.00 | VERTICAL |
| 86.260000 | 20.40 | 10.3 | 40.0 | 19.6 | --- | 0.0 | 0.00 | VERTICAL |
| 154.160000 | 21.00 | 15.2 | 43.5 | 22.5 | --- | 0.0 | 0.00 | VERTICAL |
| 194.900000 | 21.00 | 11.3 | 43.5 | 22.5 | --- | 0.0 | 0.00 | VERTICAL |
| 542.160000 | 26.00 | 19.0 | 46.0 | 20.0 | --- | 0.0 | 0.00 | VERTICAL |
| 901.060000 | 31.60 | 23.8 | 46.0 | 14.4 | --- | 0.0 | 0.00 | VERTICAL |

For 1GHz to 25GHz

GFSK Mode (above 1GHz)

| Frequency(MHz): | | | | 2402 | | Polarity: | | | HORIZONTAL | |
|-----------------|-----------------|-------------------------|----|----------------|-------------|------------------|-----------------------|-------------------|--------------------|--------------------------|
| No. | Frequency (MHz) | Emission Level (dBuV/m) | | Limit (dBuV/m) | Margin (dB) | Raw Value (dBuV) | Antenna Factor (dB/m) | Cable Factor (dB) | Pre-amplifier (dB) | Correction Factor (dB/m) |
| 1 | 2402.00 | 89.26 | PK | 114 | 24.74 | 55.86 | 28.78 | 4.61 | 0.00 | 33.40 |
| 1 | 2402.00 | 81.57 | AV | 94 | 12.43 | 48.17 | 28.78 | 4.61 | 0.00 | 33.40 |
| 2 | 2390.00 | 45.26 | PK | 74 | 28.74 | 11.94 | 28.72 | 4.60 | 0.00 | 33.32 |
| 2 | 2390.00 | -- | AV | 54 | -- | -- | -- | -- | -- | -- |
| 3 | 2400.00 | 50.64 | PK | 74 | 23.36 | 17.25 | 28.78 | 4.61 | 0.00 | 33.39 |
| 3 | 2400.00 | -- | AV | 54 | -- | -- | -- | -- | -- | -- |
| 4 | 4804.00 | 51.89 | PK | 74 | 22.11 | 47.38 | 33.49 | 6.91 | 35.89 | 4.51 |
| 4 | 4804.00 | -- | AV | 54 | -- | -- | -- | -- | -- | -- |
| 5 | 4925.16 | 48.01 | PK | 74 | 25.99 | 41.59 | 33.72 | 6.98 | 34.27 | 6.42 |
| 5 | 4925.16 | -- | AV | 54 | -- | -- | -- | -- | -- | -- |
| 6 | 7206.00 | 45.03 | PK | 74 | 28.97 | 33.92 | 36.95 | 9.18 | 35.03 | 11.11 |
| 6 | 7206.00 | -- | AV | 54 | -- | -- | -- | -- | -- | -- |

| Frequency(MHz): | | | | 2402 | | Polarity: | | | VERTICAL | |
|-----------------|-----------------|-------------------------|----|----------------|-------------|------------------|-----------------------|-------------------|--------------------|--------------------------|
| No. | Frequency (MHz) | Emission Level (dBuV/m) | | Limit (dBuV/m) | Margin (dB) | Raw Value (dBuV) | Antenna Factor (dB/m) | Cable Factor (dB) | Pre-amplifier (dB) | Correction Factor (dB/m) |
| 1 | 2402.00 | 90.36 | PK | 114 | 23.64 | 56.96 | 28.78 | 4.61 | 0.00 | 33.40 |
| 1 | 2402.00 | 82.58 | AV | 94 | 11.42 | 49.18 | 28.78 | 4.61 | 0.00 | 33.40 |
| 2 | 2390.00 | 46.41 | PK | 74 | 27.59 | 13.09 | 28.72 | 4.60 | 0.00 | 33.32 |
| 2 | 2390.00 | -- | AV | 54 | -- | -- | -- | -- | -- | -- |
| 3 | 2400.00 | 50.98 | PK | 74 | 23.02 | 17.59 | 28.78 | 4.61 | 0.00 | 33.39 |
| 3 | 2400.00 | -- | AV | 54 | -- | -- | -- | -- | -- | -- |
| 4 | 4804.00 | 52.25 | PK | 74 | 21.75 | 47.74 | 33.49 | 6.91 | 35.89 | 4.51 |
| 4 | 4804.00 | -- | AV | 54 | -- | -- | -- | -- | -- | -- |
| 5 | 4925.16 | 49.58 | PK | 74 | 24.42 | 43.16 | 33.72 | 6.98 | 34.27 | 6.42 |
| 5 | 4925.16 | -- | AV | 54 | -- | -- | -- | -- | -- | -- |
| 6 | 7206.00 | 46.05 | PK | 74 | 27.95 | 34.94 | 36.95 | 9.18 | 35.03 | 11.11 |
| 6 | 7206.00 | -- | AV | 54 | -- | -- | -- | -- | -- | -- |

REMARKS:

1. Emission level (dBuV/m) =Raw Value (dBuV)+Correction Factor (dB/m)
2. Correction Factor (dB/m) = Antenna Factor (dB/m)+Cable Factor (dB)-Pre-amplifier Factor
3. Margin value = Limit value- Emission level.
4. -- Mean the PK detector measured value is below average limit.
5. The other emission levels were very low against the limit.
6. RBW1MHz VBW3MHz Peak detector is for PK value; RBW 1MHz VBW10Hz Peak detector is for AV value.
7. For fundamental frequency, RBW 3MHz VBW 3MHz Peak detector is for PK Value ; RMS detector is for AV value.

| Frequency(MHz): | | | | 2440 | | Polarity: | | | HORIZONTAL | |
|-----------------|-----------------|-------------------------|----|----------------|-------------|------------------|-----------------------|-------------------|--------------------|--------------------------|
| No. | Frequency (MHz) | Emission Level (dBuV/m) | | Limit (dBuV/m) | Margin (dB) | Raw Value (dBuV) | Antenna Factor (dB/m) | Cable Factor (dB) | Pre-amplifier (dB) | Correction Factor (dB/m) |
| 1 | 2440.00 | 88.56 | PK | 114 | 25.44 | 55.05 | 28.85 | 4.65 | 0.00 | 33.51 |
| 1 | 2440.00 | 80.47 | AV | 94 | 13.53 | 46.96 | 28.85 | 4.65 | 0.00 | 33.51 |
| 2 | 4215.75 | 43.65 | PK | 74 | 30.35 | 40.05 | 32.82 | 6.53 | 35.76 | 3.60 |
| 2 | 4215.75 | -- | AV | 54 | -- | -- | -- | -- | -- | -- |
| 3 | 4880.00 | 50.87 | PK | 74 | 23.13 | 44.62 | 33.60 | 6.95 | 34.30 | 6.25 |
| 3 | 4880.00 | -- | AV | 54 | -- | -- | -- | -- | -- | -- |
| 4 | 5765.50 | 48.69 | PK | 74 | 25.31 | 40.94 | 34.80 | 7.46 | 34.51 | 7.75 |
| 4 | 5765.50 | -- | AV | 54 | -- | -- | -- | -- | -- | -- |
| 5 | 7320.00 | 45.91 | PK | 74 | 28.09 | 34.22 | 37.46 | 9.23 | 35.00 | 11.69 |
| 5 | 7320.00 | -- | AV | 54 | -- | -- | -- | -- | -- | -- |

| Frequency(MHz): | | | | 2440 | | Polarity: | | | VERTICAL | |
|-----------------|-----------------|-------------------------|----|----------------|-------------|------------------|-----------------------|-------------------|--------------------|--------------------------|
| No. | Frequency (MHz) | Emission Level (dBuV/m) | | Limit (dBuV/m) | Margin (dB) | Raw Value (dBuV) | Antenna Factor (dB/m) | Cable Factor (dB) | Pre-amplifier (dB) | Correction Factor (dB/m) |
| 1 | 2440.00 | 89.76 | PK | 114 | 24.24 | 56.25 | 28.85 | 4.65 | 0.00 | 33.51 |
| 1 | 2440.00 | 81.25 | AV | 94 | 12.75 | 47.74 | 28.85 | 4.65 | 0.00 | 33.51 |
| 2 | 4215.75 | 45.10 | PK | 74 | 28.90 | 41.50 | 32.82 | 6.53 | 35.76 | 3.60 |
| 2 | 4215.75 | -- | AV | 54 | -- | -- | -- | -- | -- | -- |
| 3 | 4880.00 | 51.56 | PK | 74 | 22.44 | 45.31 | 33.60 | 6.95 | 34.30 | 6.25 |
| 3 | 4880.00 | -- | AV | 54 | -- | -- | -- | -- | -- | -- |
| 4 | 5765.50 | 49.65 | PK | 74 | 24.35 | 41.90 | 34.80 | 7.46 | 34.51 | 7.75 |
| 4 | 5765.50 | -- | AV | 54 | -- | -- | -- | -- | -- | -- |
| 5 | 7320.00 | 46.02 | PK | 74 | 27.98 | 34.33 | 37.46 | 9.23 | 35.00 | 11.69 |
| 5 | 7320.00 | -- | AV | 54 | -- | -- | -- | -- | -- | -- |

REMARKS:

1. Emission level (dBuV/m) =Raw Value (dBuV)+Correction Factor (dB/m)
2. Correction Factor (dB/m) = Antenna Factor (dB/m)+Cable Factor (dB)-Pre-amplifier Factor
3. Margin value = Limit value- Emission level.
4. -- Mean the PK detector measured value is below average limit.
5. The other emission levels were very low against the limit.
6. RBW1MHz VBW3MHz Peak detector is for PK value; RBW 1MHz VBW10Hz Peak detector is for AV value.
7. For fundamental frequency, RBW 3MHz VBW 3MHz Peak detector is for PK Value; RMS detector is for AV value.

| Frequency(MHz): | | | | 2480 | | Polarity: | | | HORIZONTAL | |
|-----------------|-----------------|-------------------------|----|----------------|-------------|------------------|-----------------------|-------------------|--------------------|--------------------------|
| No. | Frequency (MHz) | Emission Level (dBuV/m) | | Limit (dBuV/m) | Margin (dB) | Raw Value (dBuV) | Antenna Factor (dB/m) | Cable Factor (dB) | Pre-amplifier (dB) | Correction Factor (dB/m) |
| 1 | 2480.00 | 89.54 | PK | 114 | 24.46 | 55.92 | 28.92 | 4.70 | 0.00 | 33.62 |
| 1 | 2480.00 | 81.66 | AV | 94 | 12.34 | 48.04 | 28.92 | 4.70 | 0.00 | 33.62 |
| 2 | 2483.50 | 50.68 | PK | 74 | 23.32 | 17.05 | 28.93 | 4.70 | 0.00 | 33.63 |
| 2 | 2483.50 | -- | AV | 54 | -- | -- | -- | -- | -- | -- |
| 3 | 2500.00 | 43.56 | PK | 74 | 30.44 | 9.88 | 28.96 | 4.72 | 0.00 | 33.68 |
| 3 | 2500.00 | -- | AV | 54 | -- | -- | -- | -- | -- | -- |
| 4 | 4960.00 | 50.23 | PK | 74 | 23.77 | 45.31 | 33.84 | 7.00 | 35.92 | 4.92 |
| 4 | 4960.00 | -- | AV | 54 | -- | -- | -- | -- | -- | -- |
| 5 | 5411.25 | 46.58 | PK | 74 | 27.42 | 38.95 | 34.74 | 7.27 | 34.38 | 7.63 |
| 5 | 5411.25 | -- | AV | 54 | -- | -- | -- | -- | -- | -- |
| 6 | 7440.00 | 43.98 | PK | 74 | 30.02 | 32.03 | 37.64 | 9.28 | 34.97 | 11.95 |
| 6 | 7440.00 | -- | AV | 54 | -- | -- | -- | -- | -- | -- |

| Frequency(MHz): | | | | 2480 | | Polarity: | | | VERTICAL | |
|-----------------|-----------------|-------------------------|----|----------------|-------------|------------------|-----------------------|-------------------|--------------------|--------------------------|
| No. | Frequency (MHz) | Emission Level (dBuV/m) | | Limit (dBuV/m) | Margin (dB) | Raw Value (dBuV) | Antenna Factor (dB/m) | Cable Factor (dB) | Pre-amplifier (dB) | Correction Factor (dB/m) |
| 1 | 2480.00 | 90.86 | PK | 114 | 23.14 | 57.24 | 28.92 | 4.70 | 0.00 | 33.62 |
| 1 | 2480.00 | 82.05 | AV | 94 | 11.95 | 48.43 | 28.92 | 4.70 | 0.00 | 33.62 |
| 2 | 2483.50 | 51.55 | PK | 74 | 22.45 | 17.92 | 28.93 | 4.70 | 0.00 | 33.63 |
| 2 | 2483.50 | -- | AV | 54 | -- | -- | -- | -- | -- | -- |
| 3 | 2500.00 | 43.89 | PK | 74 | 30.11 | 10.21 | 28.96 | 4.72 | 0.00 | 33.68 |
| 3 | 2500.00 | -- | AV | 54 | -- | -- | -- | -- | -- | -- |
| 4 | 4960.00 | 51.20 | PK | 74 | 22.80 | 46.28 | 33.84 | 7.00 | 35.92 | 4.92 |
| 4 | 4960.00 | -- | AV | 54 | -- | -- | -- | -- | -- | -- |
| 5 | 5411.25 | 46.85 | PK | 74 | 27.15 | 39.22 | 34.74 | 7.27 | 34.38 | 7.63 |
| 5 | 5411.25 | -- | AV | 54 | -- | -- | -- | -- | -- | -- |
| 6 | 7440.00 | 44.75 | PK | 74 | 29.25 | 32.80 | 37.64 | 9.28 | 34.97 | 11.95 |
| 6 | 7440.00 | -- | AV | 54 | -- | -- | -- | -- | -- | -- |

REMARKS:

1. Emission level (dBuV/m) =Raw Value (dBuV)+Correction Factor (dB/m)
2. Correction Factor (dB/m) = Antenna Factor (dB/m)+Cable Factor (dB)-Pre-amplifier Factor
3. Margin value = Limit value- Emission level.
4. -- Mean the PK detector measured value is below average limit.
5. The other emission levels were very low against the limit.
6. RBW1MHz VBW3MHz Peak detector is for PK value; RBW 1MHz VBW10Hz Peak detector is for AV value.
7. For fundamental frequency, RBW 3MHz VBW 3MHz Peak detector is for PK Value; RMS detector is for AV value.

3.3. Occupied Bandwidth Measurement

Limit

N/A

Test Configuration



Test Procedure

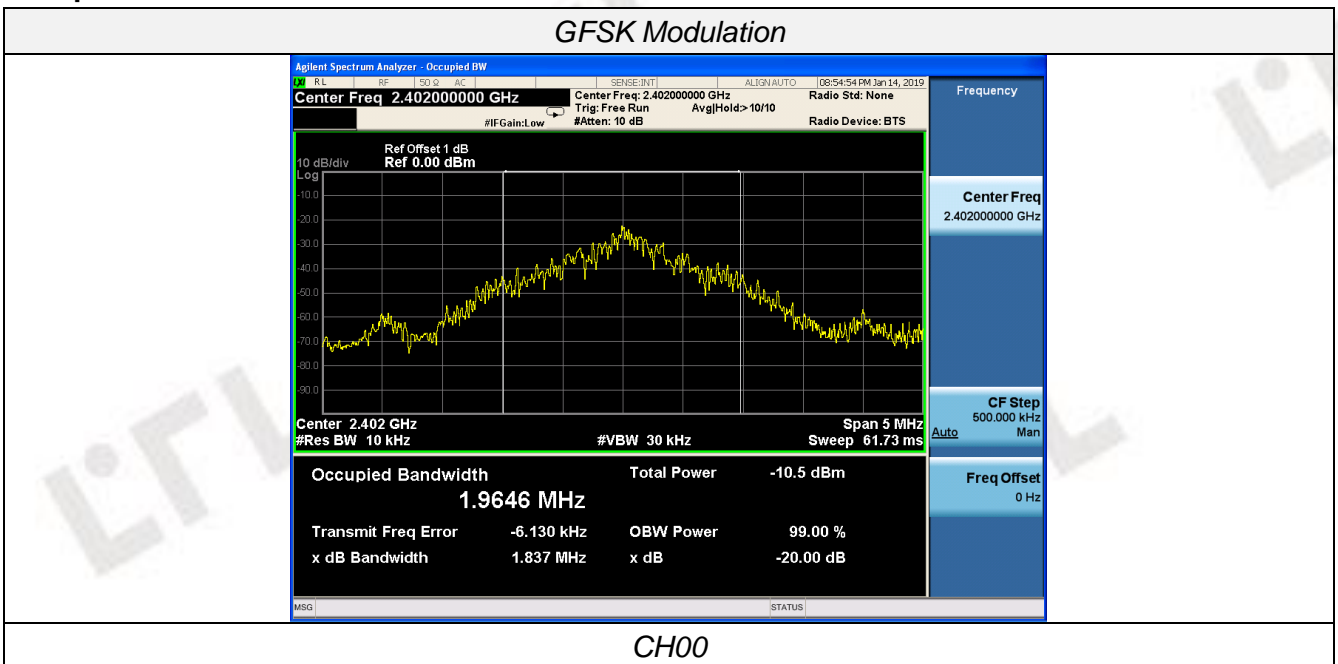
The transmitter output was connected to the spectrum analyzer through an attenuator. The bandwidth of the fundamental frequency was measured by spectrum analyzer with 30 KHz RBW and 100 KHz VBW.

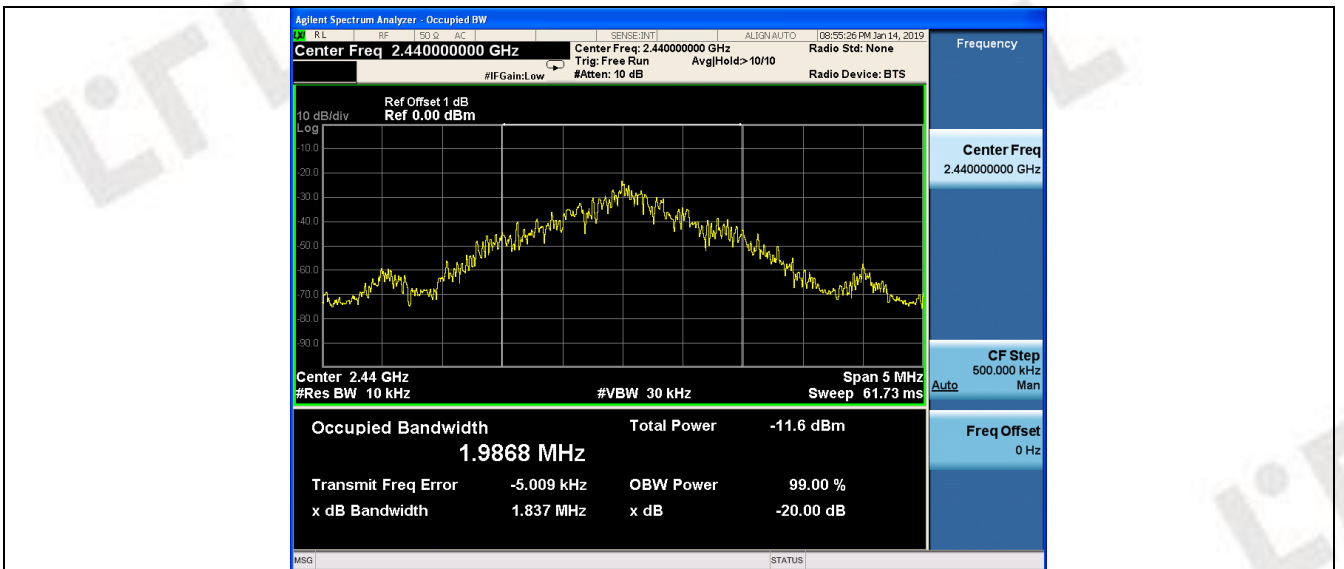
The 20dB bandwidth is defined as the total spectrum the power of which is higher than peak power minus 20dB.

Test Results

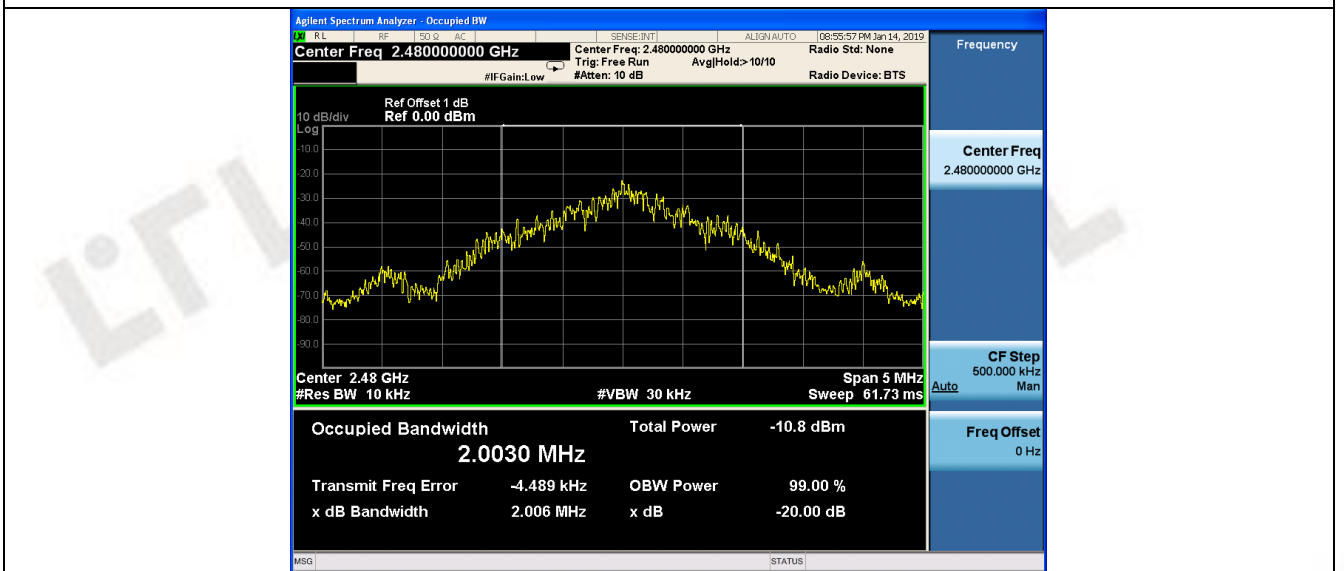
| Modulation | Channel | 99% OBW (MHz) | 20dB bandwidth (MHz) | Result |
|------------|---------|---------------|----------------------|--------|
| GFSK | CH00 | 1.9646 | 1.837 | Pass |
| | CH19 | 1.9868 | 1.837 | |
| | CH39 | 2.0030 | 2.006 | |

Test plot as follows:





CH19



CH39

3.4. Antenna Requirement

Standard Applicable

For intentional device, according to FCC 47 CFR Section 15.203, an intentional radiator shall be designed to ensure that no antenna other than that furnished by the responsible party shall be used with the device.

Refer to statement below for compliance.

The manufacturer may design the unit so that the user can replace a broken antenna, but the use of a standard antenna jack or electrical connector is prohibited. Further, this requirement does not apply to intentional radiators that must be professionally installed.

Antenna Connected Construction

The antenna used in this product is a PCB Antenna, The directional gains of antenna used for transmitting is 0dBi.

4. Test Setup Photos of the EUT

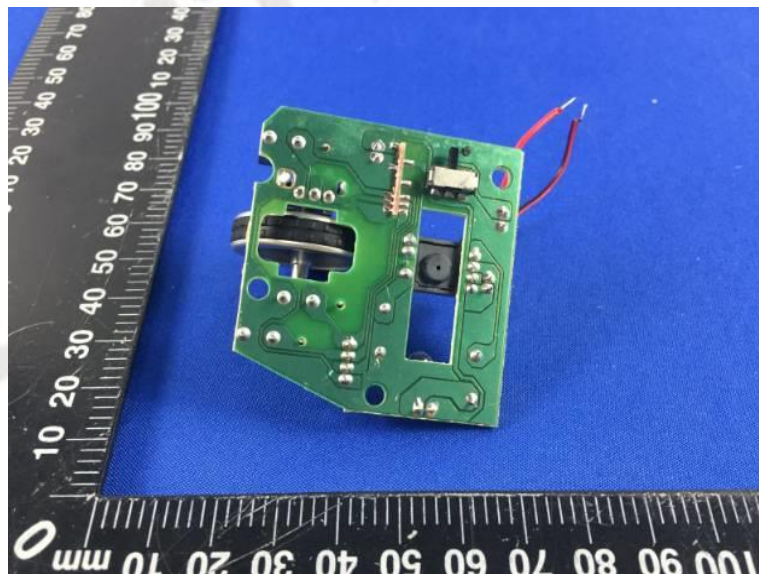
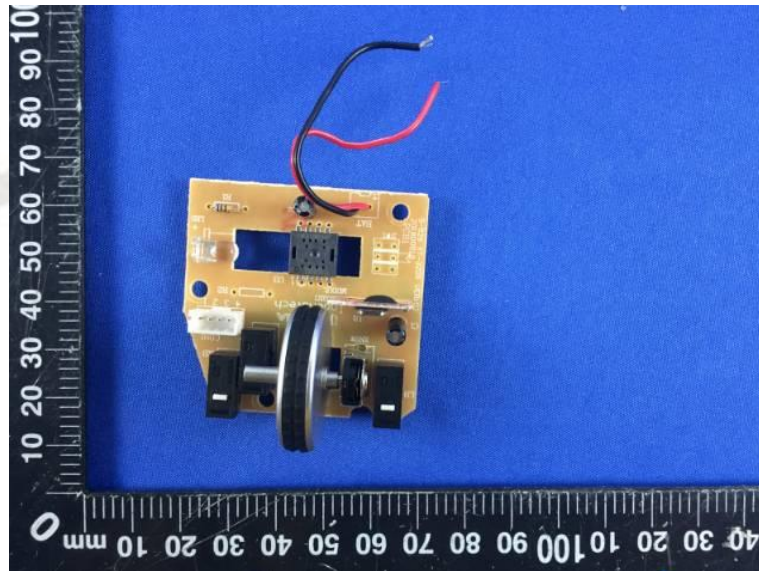


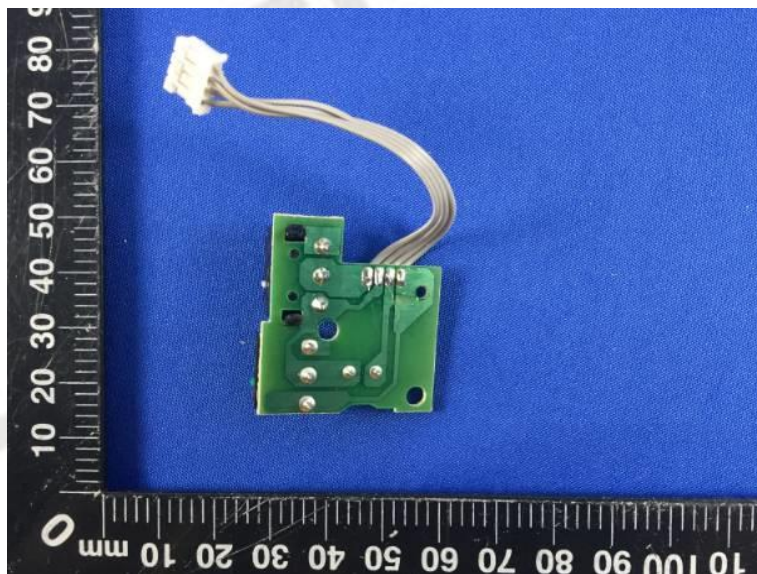
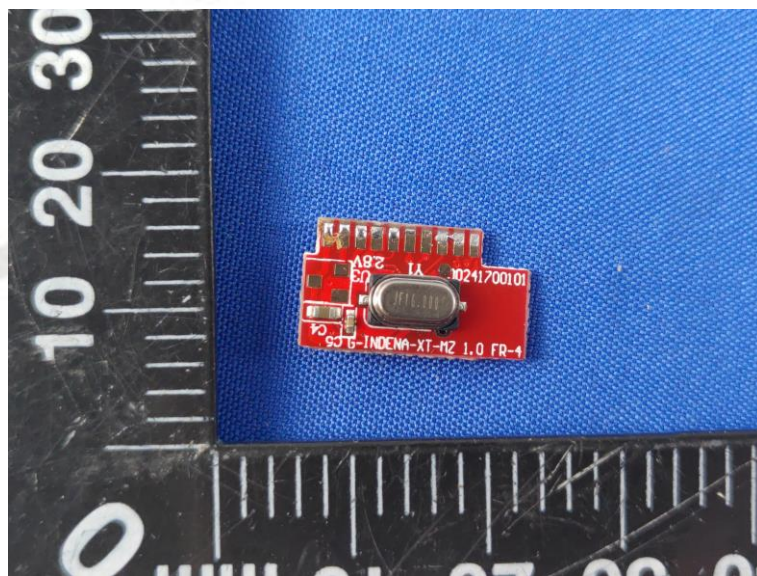
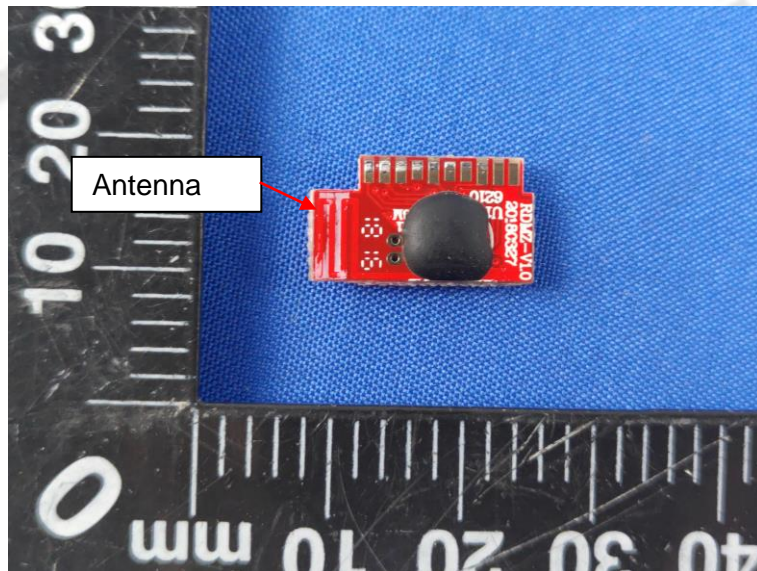
5. External and Internal Photos of the EUT

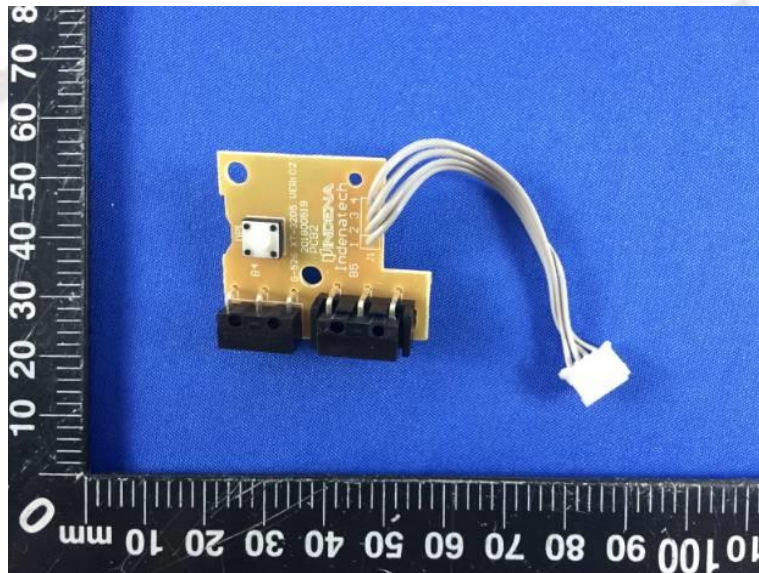
External Photos of EUT



Internal Photos of EUT







***** End of Report *****