

OPERATION INSTRUCTION

IP Villa Video Intercom System
User Manual

LIMITATION OF LIABILITY

- ※ This users' manual is supplied 'as is', with no warranties, be it expressed or implied, including, but not limited to, the implied warranties of merchantability, suitability for any exact purpose, or non-infringement of any third party's rights.
- ※ This publication may include technical inaccuracies or types. The manufacturer holds the right to introduce any changes to the information contained herein, for any purpose, including but not limited to, improvements of the publications and/or related to the product, at any time, without prior notice.

DISCLAIMER OF WARRANTY

The supplier shall not be liable to any party or any person, except for replacement or reasonable maintenance of this product, for the cases, included but not limited to the following:

- ※ Any damage or loss, including but not limited to: direct/indirect, consequential, special, exemplary, arising out of or related to the product;
- ※ Inappropriate use or negligence of the user in operation of the product, resulting in personal injury or any damage;
- ※ Unauthorized disassembly, repair or modification of the product by the user;
- ※ Any problems or consequential inconvenience, loss or damage, caused by connecting this product to devices of the third parties;
- ※ Any claim or action for damages, brought by any photogenic subject, be it a person or organization, due to violation of privacy whereby the pictures taken by the device and/or saved data become public or are used for the purposes other than intended.

SAFETY INSTRUCTIONS

- ※ Read these instructions and keep them in a safe place for future reference.
- ※ Please refer all work related to the installation of this product to qualified service personnel or system technician.
- ※ Do not operate the appliance beyond its specified temperature, humidity or power source ratings.
- ※ Securely install the devices on vertical surfaces (solid walls/doors) not prone to vibration or impact.
- ※ Install the devices away from heat sources such as radiators, heat registers and stoves. Installation of the terminal near consumer electronics devices, e.g. stereo receiver/amplifiers and televisions, is permitted as long as the air surrounding the terminal does not exceed the above mentioned temperature range.
- ※ Handle the appliance with care. Do not strike or shake, as this may damage the device.

1

- ※ The doorbell/camera units should be fitted with an approved weather shield if the chosen position is in direct sunlight, or in contact with rain, snow or irrigation sprinkler systems.
- ※ Do not use strong or abrasive detergents when cleaning the appliance body. When the dirt is hard to remove, use a mild detergent and wipe gently.
- ※ Do not overload outlets and extension cords as this may result in a risk of fire or electric shock. Distributing, copying, disassembling, reverse compiling, reverse engineering, and also exporting in violation of export laws of the software provided with this product, is expressly prohibited.

CARING FOR THE ENVIRONMENT BY RECYCLING



When you see this symbol on a product, do not dispose of the product with residential or commercial waste.

Recycling your electrical equipment

Please do not dispose of this product with your residential or commercial waste. Some countries or regions, such as the European Union, have set up systems to collect and recycle electrical and electronic waste items. Contact your local authorities for information about practices established for your region.

COPYRIGHT STATEMENT

All rights reserved. No part of this publication may be reproduced in any form or by any means, transcribed, translated into any language or computer language, transformed in any other way, stored in a retrieval system, or transmitted in any form or by any means, electronic, mechanical, recording, photocopying or otherwise, without the prior written permission of the owner.

2

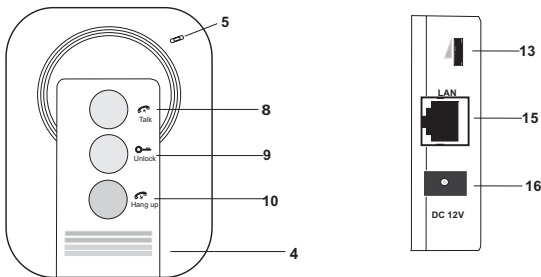
Table of Contents

LIMITATION OF LIABILITY.....	1
DISCLAIMER OF WARRANTY.....	1
SAFETY INSTRUCTIONS.....	1
CARING FOR THE ENVIRONMENT BY RECYCLING.....	2
COPYRIGHT STATEMENT.....	2
Table of Contents	3
1. Description Of The Indoor Unit.....	5
1.1 Description On The Indoor Monitoring(Please take actual model as quasi).....	5
1.2 Specifications of the Indoor Unit.....	7
1.3 Fitting for the Indoor Unit	8
1.4 Wiring Diagram	9
1.5 Note On Wiring Connection.....	10
1.6 Installation Process of Indoor Units	11
1.7 Operation Introduction On Indoor Unit	13
2. System Settings For Indoor Units.....	15
2.1 Device Connect--Through wired network or wireless network.....	15
2.2 Soft AP Function	16
2.3 Web Browser Operation	17
2.3.1 Running Environment.....	17
2.3.2 Network Security Setting	17
2.3.3 Connection Settings	18
2.4 Quick Setting.....	19
2.5 System Login	21
2.6 Port Forwarding	23
2.7 Function Settings.....	24
2.7.1 Home.....	24
2.7.2 Media	25
2.7.2.1 Media--Video.....	25
2.7.2.2 Media--OSD	26
2.7.3 Parameters	26
2.7.3.1 Network--Basic Settings	27
2.7.3.2 Network--DDNS	28
2.7.3.3 Network--Wifi(Optional, please take actual machine as quasi)	28
2.7.4 System.....	29
2.7.4.1 System-User.....	30
2.7.4.2 System-Time Setting.....	30
2.7.4.3 System-Initialize.....	31
2.7.4.4 System-Device Info.....	32
2.7.4.5 System-Storage Device.....	32
2.7.4.6 System-System Log.....	33
2.7.5 Logout.....	34
2.7.6 Record(Optional).....	34

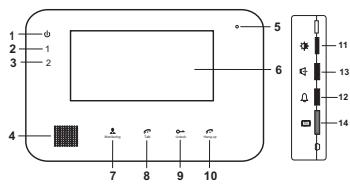
3. Mobile Phone Software Visit	34
3.1 Iphone Mobile or Ipad	34
3.2 Android Mobile.....	39
Appendix 1. Accessing the indoor unit via Mozilla Firefox	44
Appendix 2. Accessing the indoor unit via Google Chrome	44
Appendix 3 How to ensure reliable remote viewing of the indoor unit through IE browser on Win 7/Win 8 64bit OS.....	46

1. Description Of The Indoor Unit

1.1 Description On The Indoor Monitoring (Please take actual model as quasi)



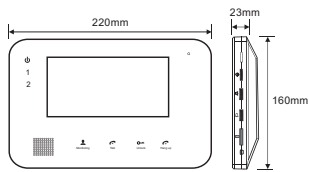
Non-visual Indoor Unit



Visual Indoor Unit with 7 inch TFT LCD

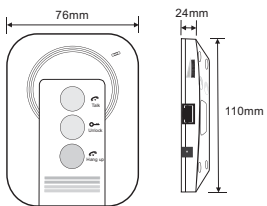
NO.	Name	Descriptions
1	Power LED	The power indicator of the indoor unit
2	The door 1 LED	The light is on when the door 1 works.
3	The door 2 LED	The light is on when the door 2 works.
4	Speaker	Sound from outdoor camera
5	Microphone	Transmit the voice to outdoor camera.
6	TFT display	View visitor' s image displayed on the TFT screen with visual indoor unit.
7	Monitoring	Observe the image of camera view at entrance in real time with visual indoor unit. For some models, click "Monitoring①" to observe the image of Door 1, and click "Monitoring②" to observe the image of Door 2.
8	Talk	Activate conversation mode by pressing this button.
9	Unlock	Release the door lock by pressing this button.
10	Hang up	End conversation mode by pressing this button and the indoor unit will go into standby mode.
11	Color Setup for LCD screen	Make adjustments to the brightness, chrome and contrast of the LCD screen. When the LCD screen is highlighted, press this button to bring up the option brightness "☀", press this button again to bring up the option of chrome "🌈", press this button once again to bring up the option contrast "🔍". During adjust values, scroll the button upwards to decrease, and scroll the button downward to increase. By default, the values of the brightness, chrome, contrast are set at 20, 35, 20.
12	Indoor Ringer Volume	Adjust the ringer volume of indoor device manually.
13	Indoor Call Volume	Adjust volume for the indoor device during intercom.
14	SD card slot (optional)	SD card interface, support up to 32GB card for recording.
15	Ethernet Connector	RJ-45 10/100 Base-T Ethernet network. On some models, the Ethernet connector is on back panel.
16	DC 12V(Optional)	External switching power supply DC 12V. On some models, the power input socket is on back panel.

1.2 Specifications of the Indoor Unit



Visual Indoor Unit with 7 inch TFT LCD

Display	7 inch TFT LCD
Resolution	800(H)x3(RGB)x480(V)
Video system	PAL/NTSC compatible
Intercom mode	Semi-Duplex communication
Conversation duration	120 seconds
Standby status	300mA max.
working status	600mA max.
Power supply	DC 12V
Operation temp.	-10~+60°C
Installation	Surface mount
Dimensions	220*160*23mm

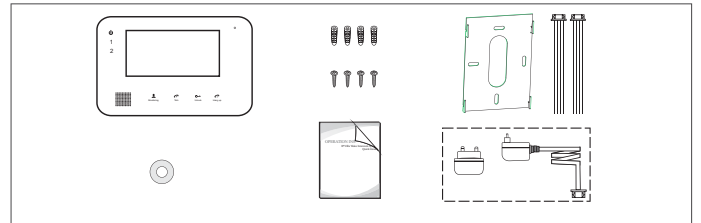


Non-visual Indoor Unit

Video system	PAL/NTSC compatible
Intercom mode	Semi-Duplex communication
Conversation duration	120 seconds
Standby status	200mA max.
working status	400mA max.
Power supply	DC 12V(optional) Built-in power supply (AC 100V~240V)--Optional
Operation temp.	-10~+60°C
Installation	Surface mount
Dimensions	76*110*24mm

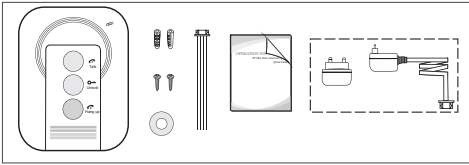
1.3 Fitting for the Indoor Unit

A. For the visual indoor unit with 7 inch TFT LCD



- Indoor Unit ----- 1 pcs
- Plastic Anchors ----- 4 pcs
- Screws ----- 4 pcs
- Bracket ----- 1 pcs
- This Quick Guide----- 1 pcs
- External Switching Power Adapter----- 1 pcs
- Installation CD(with full manual and android mobile phone software)----- 1 pcs

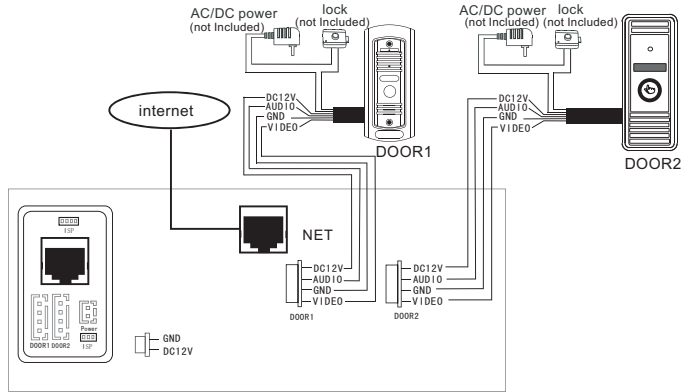
B. For the non-visual indoor unit



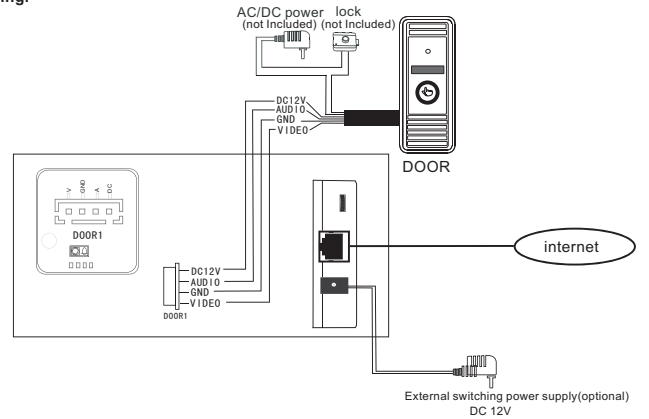
- Indoor Unit ----- 1 pcs
- Plastic Anchors ----- 2 pcs
- Screws ----- 2 pcs
- 4 Pin Line ----- 1 pcs
- This Quick Guide----- 1 pcs
- External Switching Power Adapter----- 1 pcs
- Installation CD(with full manual and android mobile phone software)----- 1 pcs

1.4 Wiring Diagram

A: For the visual indoor unit with 7 inch or 4 inch TFT LCD monitor, users can connect up to two outdoor cameras to the corresponding interfaces by their own's requirement according to the following wiring diagram. And indoor device power with a built-in power or an external power optional, please refer to actual control using.



B: For the non-visual indoor unit, users can connect only one outdoor camera to the corresponding interface according to the following wiring diagram. And indoor machine power with a built-in power or an external power optional, please refer to actual control using.



1.5 Note On Wiring Connection

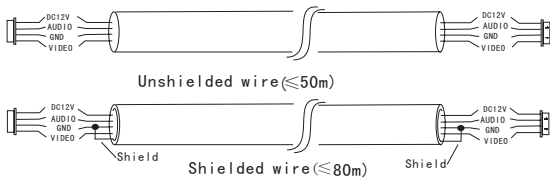
- i** The electric lock source camera is not include in the package, you can purchase an electric lock which is suitable for you need.
- i** In the standard delivery the system supports locks with Normally Open (N.O.) door unlocking method. It means that in the normal state the dry contact is opened so the lock is kept under constant closed state. If the unlocking push-button is pressed and the dry contact is changed to closed, then the lock is released.
- i** Please note that the 2P Short Pin is designed for programming the indoor monitor, the indoor monitor will be programmed to main monitor if you plug the 2P Short Pin in; however the indoor monitor will be programmed to extension monitor if the 2P Short Pin is pulled out. Setup ok, after power machine automatically detects, if it is in state machine work Set, need makes the machine to detect electric.
- !** **Indoor machine power with a built-in power and the external power optional. Please refer to actual control using. If the indoor machine with a built-in power source, applicable to wide voltage range(AC 100V~240V). Please first pull out the AC power plug before installation of device(Shown as below).**



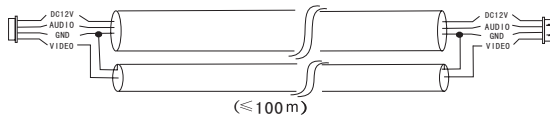
- i** Use and selection of wire, please refer to the following.(The actual effect and the quality of wire rod has the very big relations)

1. 4C ordinary unshielded and shielded wire connection mode:

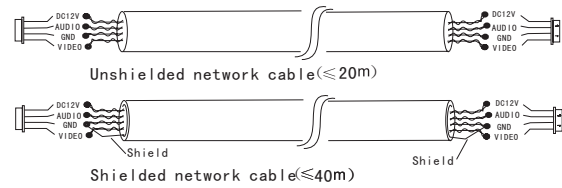
Distance≤28m (4*0. 2mm²) ; Distance≤50m (4*0. 3mm²) ; Distance≤80m (4*0. 5mm²) .



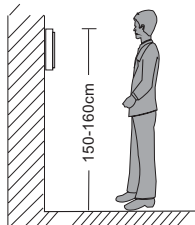
2. 3C ordinary unshielded +video wire (75-3) connection mode:



3. CAT5 or CAT6 network cable connection mode: (Not recommended)



1.6 Installation Process of Indoor Units



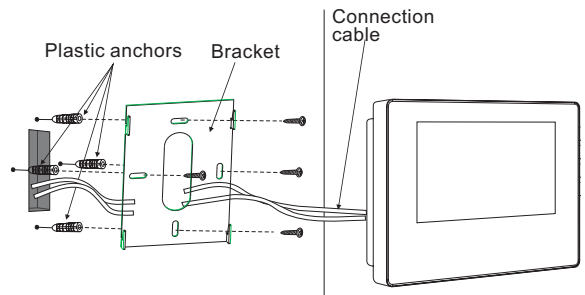
NOTE:

- * Avoid installation of the device near strong radiation e.g. TV set, video recorder and PC etc.
- * Maintenance should be complied with a qualified technician.
- * Avoid hard shake, beating and collision, otherwise the internal exact components maybe be damaged.

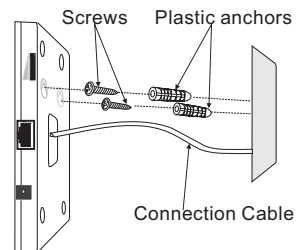
- * Select the most suitable position where the monitor is located at user's eye level.
- * Switch off power supply before installing.
- * Keep more than 30cm away from AC power supply to avoid external interference.
- * Keep it away from the water and magnetic field.

To install the indoor unit, please follow these steps as below:

A. For the visual indoor unit with 4 inch or 7 inch LCD TFT



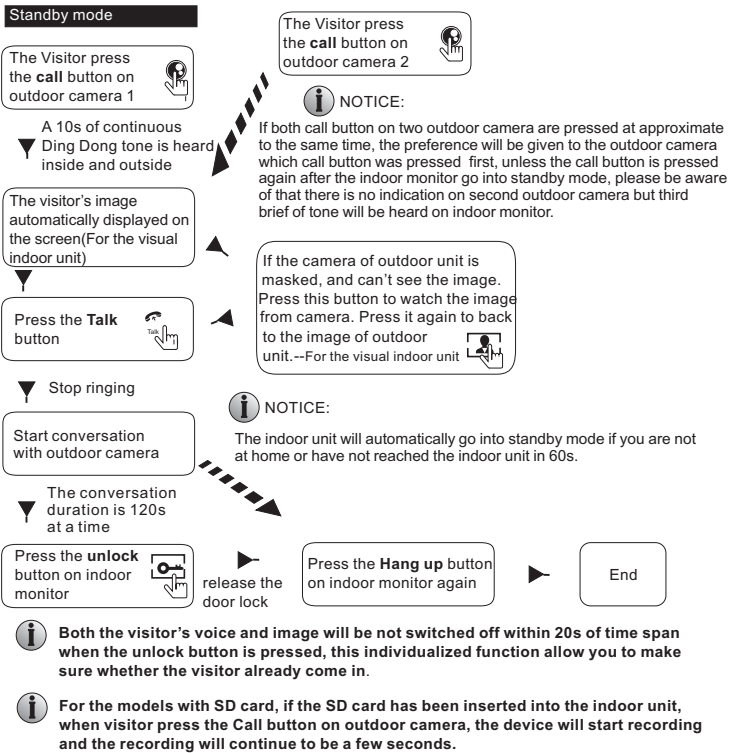
B. For the non-visual indoor unit



1.7 Operation Introduction On Indoor Unit

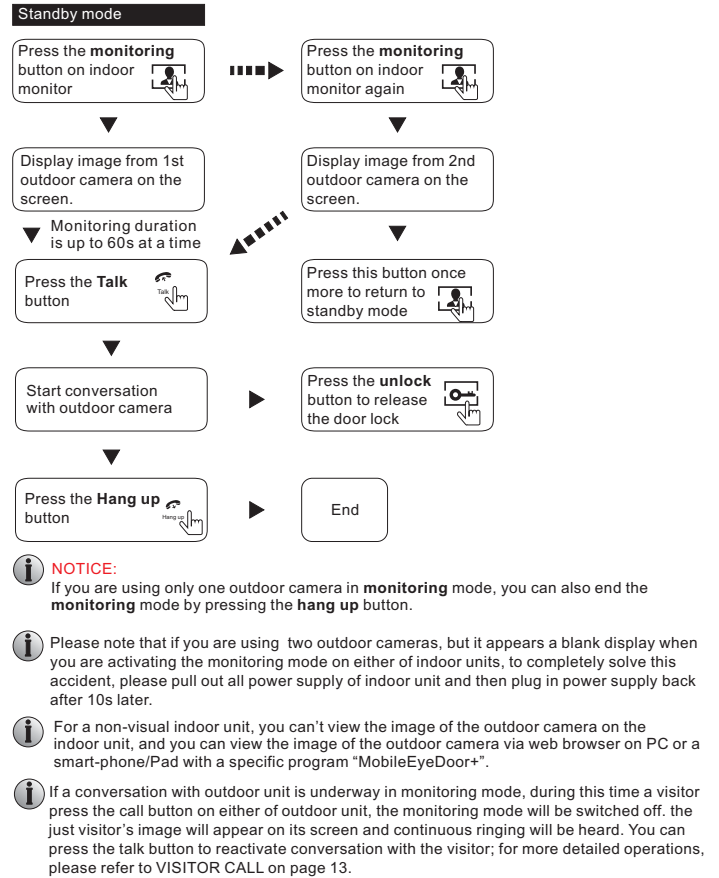
◆ VISITOR CALL

* Please be aware of Connection of 2 outdoor cameras is required.



◆ MONITORING On Indoor Unit(For the visual indoor machine)

* Please be aware of Connection of 2 outdoor cameras to 1 indoor monitor is required for dual entrance monitoring at least.



2. System Settings For Indoor Units

No menus on the indoor unit can be operated, so users should set up parameters for the indoor unit via Web browser.

2.1 Device Connect--Through wired network or wireless network(optional)

A. User can connect the indoor device through network cable, operation steps:

1. Connect the crystal head of network cable to RJ45 interface of the indoor unit.
2. Connect outdoor camera(s) to the indoor unit through 4 pin line(s).
3. Connect the power adapter to the electrical outlet of the indoor unit and power on.
4. Wait for a moment until hearing a beep, this time the indoor unit start completely.

Network connection diagram through wired network of Figure 1 as an example of a non-visual indoor.

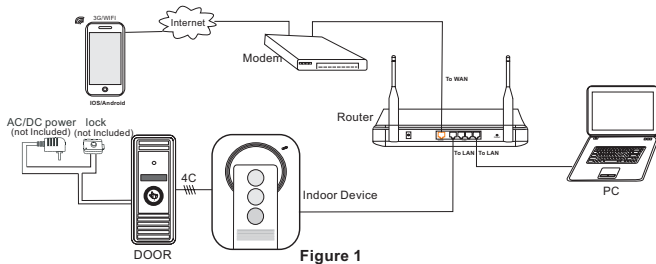


Figure 1

B. The indoor device with WIFI function can also work in WIFI wireless network.

1. If user connects a network cable to the indoor device, the parameters for WIFI can be set up via IE browser, please see section 2.7.3.3 Network--WIFI for more information, network connection diagram please refer to Figure 1 on the above.
2. If user doesn't want to connect a wired cable to the indoor unit, and user needs to prepare a wireless router and a smart-phone or a pad with IOS or Android system. The parameters for WIFI can be set up via a smart-phone or a pad with IOS or Android system, please see section 2.2 Soft AP function for more information.

Network connection diagram via wireless network as Figure 2 as an example of a non-visual indoor unit.

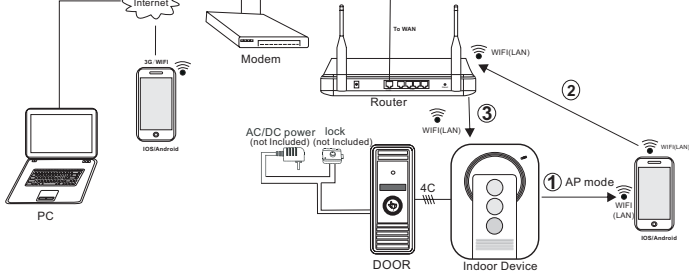


Figure 2

2.2 Soft AP Function

The indoor unit can be worked in AP mode. If user doesn't want to connect a wired cable to the indoor device, and user need prepare a wireless router and a smart-phone or a pad with IOS or Android system. The network connection diagram via wireless network please refer to Figure 2 on section 2.1 Device Connect.

- 1) First user must install a mobile operating system specific program into his mobile or pad. The Android mobile program is located on the included CD or downloaded via "Play Store", and the iPhone or iPad program should be downloaded via "APP Store". In "Play Store" or "APP Store", please search for "MobileEyeDoor+" and install it onto user's mobile or Pad. Please see the instruction manual for user's mobile to install the program.
- 2) Second turn on user's phone WLAN function, then click the "MobileEyeDoor+" icon to run the program, click "Add" to select add mode, here must select "install a add new wireless device" to the next interface to add wireless device.
- 3) Then make the indoor unit into standby mode, and long-press the "talk" button on the front panel, don't loosen the button until hearing a beep, this means the device will reboot automatically and go into AP mode. Wait for a moment, when hearing another beep it means the device starts successfully and goes into AP mode.
- 4) On "WIFI setting" interface, wait for a moment and phone with android system can be connected to the device WIFI successfully automatically. For the phone with IOS system user need to connect device WIFI function manually. Click "Management device WIFI" to enter WLAN interface of user's phone to see available networks, and UID number of the indoor device(the UID is attached to the machine) will be shown on the available networks list. Select it and connected successfully means the mobile will be connected to the indoor unit directly(shown as follows).
- 5) Return to the "WIFI setting" interface and go to the next step. On this interface, available wireless devices will be shown on the list. Choose one and click it, if the wireless password of the wireless router is enabled, it will pop-up a window to enter the password of the wireless router, input the correct password and setting ok, the indoor device will reboot automatically, it will be connected to the wireless router after starting when hearing a beep again.
- 6) Click "Next Step" to add indoor device, input the correct password of the device, default as "888888", and then save.
- 7) Return to the WLAN settings on the mobile and choose the wireless router which the indoor unit has been connected to. Now the wireless function of the indoor device has been activation and works normally(Shown as follows).

For more details of "MobileEyeDoor+", please refer to Section 3.1 Mobile Phone Software Visit.

Note:

1. If the device has went into Ap mode, but the wireless function of the device hasn't been activation via "MobileEyeDoor+" on the phone or user doesn't do any operate about the device, after 10 minutes the device will automatically exit AP mode and returns to the previous connection mode.
2. When the device went into AP mode, long-press the "Talk" button again, don't loosen the button until hearing a beep, this means the device will reboot automatically and will return to the previous connection mode.

In the following diagram, we use a smart-phone with android system to a non-visual indoor unit. The usage of an iPhone/iPad with IOS system is similar.



2.3 Web Browser Operation

2.3.1 Running Environment

Install the software through the Internet browser of OS to conveniently operate the network from a remote location. This device supports C/S, B/S, and access in LAN and WAN. It also supports IP and domain name visiting.

IMPORTANT! SOFTWARE RECOMMENDATIONS:

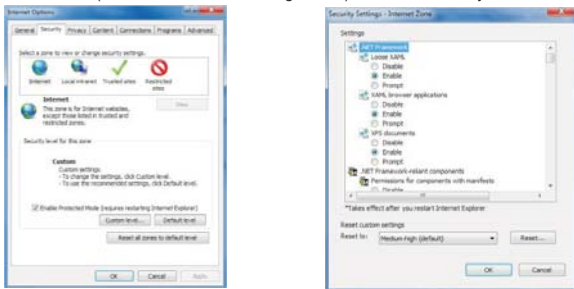
To ensure reliable remote viewing of IPdoor footage, it is highly recommended that users have either Windows XP, Windows 7 or Windows 8 installed on their computers, and that they use either Internet Explorer 6.0, Internet Explorer 7.0, Internet Explorer 8.0, Internet Explorer 9.0, Internet Explorer 10.0, Internet Explorer 11.0, Mozilla Firefox, or Google Chrome as their Internet browser. (In the appendix, there is an explanation of how to access the indoor unit using Firefox or Google Chrome.)

Note: Suggested that to run Internet Explorer browser as Administrator on operation system such as Windows 7/Windows 8/Windows 8.1 except Window XP.

2.3.2 Network Security Setting

Prior to setting up remote access, set the network security level by following the following instructions:

- (1) Open the Internet Explorer browser and click the "Tools" tab located in the bar at the top of the browser; from the drop-down menu, select "Internet Options".
- (2) Click the "Security" tab in the dialogue box
- (3) Click "Custom level" (at the bottom of the dialogue box) to set the security level.



Set the appropriate settings for the ActiveX controls and plug-ins. Find the following controls in the "Security Settings" box and select the "Enable" option for each of them. This is an extremely important step.

- * Automatic prompting for ActiveX controls.
- * Binary and script behaviors.
- * Initialize and script ActiveX controls not marked as safe for scripting.
- * Download signed ActiveX controls.
- * Download unsigned ActiveX controls.
- * Run ActiveX controls and plug-ins.
- * Script ActiveX controls safe for scripting.

Prompt: Before setting up remote access, turn Disable the firewall and any anti-virus software currently running on the computer.

17

2.3.3 Connection Settings

Remote access to the IP video door phone is carried out over the Internet. In the local area network, the IP address of the client-side computer must be in the same network segment that the IP address of the IP video door phone. In the wide area network, the only requirement is that the two sides can visit the public network and connect to the Internet through the IP address or the dynamic domain name. The following will mainly focus on connecting and setting up the local area network.

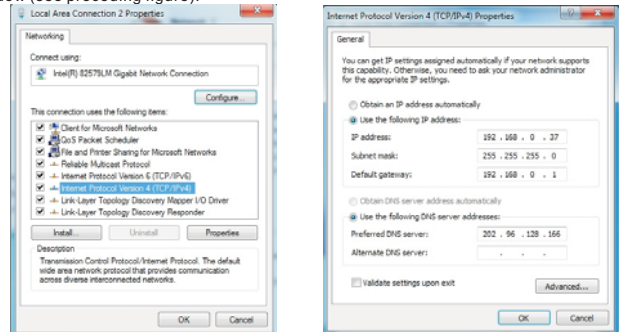
Step 1: Right-click on "Network Neighborhood" and click "Properties" in the menu to open the "Network Connections" menu. Alternatively, if the operating system being used does not have a "Network Neighborhood" icon, enter the Control Panel found in the "Start" menu; then, click "Network and Internet", and select "Network and Sharing Center." On the "Network and Sharing Center" page, there should be a "Network" section; in that section, there should be a "View Status" link next to a listing that reads "Connection: Local Area Connection." Click the "View Status" link. A small "Local Area Connection Status" window will appear; at the bottom of this screen, click "Properties", and if prompted to give permission to continue, click "Yes."



Step 2: Double-click to open "Local Area Connection" from the "Network Connections" menu.

Step 3: Click "Properties" in the lower-left corner of the window (see preceding figure).

Step 4: Double-click "Internet protocol (TCP/IP)" from the "This connection uses the following items" list in the center of the window (see preceding figure).



Step 5: The default IP address of the indoor unit is 192.168.0.111. Set the corresponding IP address, subnet mask, and default gateway on the PC. If the subnet mask and default gateway on the computer are the same as those of the indoor unit, then the IP address is most likely in the same network segment. However, they must not be exactly the same as the ones on the indoor unit, as this will cause IP address conflicts. Taking the preceding figure as an example, the IP address should be: 192.168.0.X, where X cannot be 244 or 1 (including other IP addresses currently being used), and cannot exceed 255, as the subnet mask is 255.255.255.0, and the gateway is 192.168.1.1.

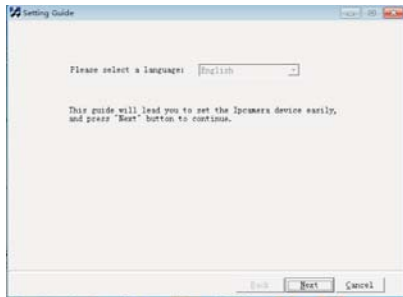
18

2.4 Quick Setting

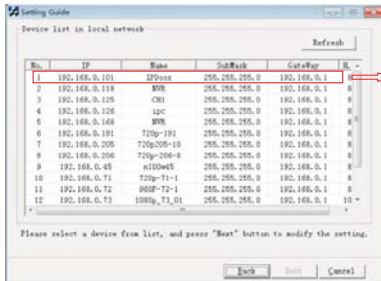
1) Through the indoor unit connection to network (or PC), and then to the indoor unit electric start.

Note: if the indoor unit and PC connected directly, PC's IP address to use manual distribution methods, and the IP address of the PC network segment and the indoor unit keep the same network segment.

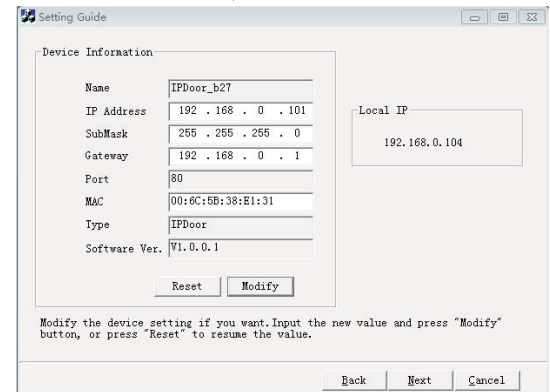
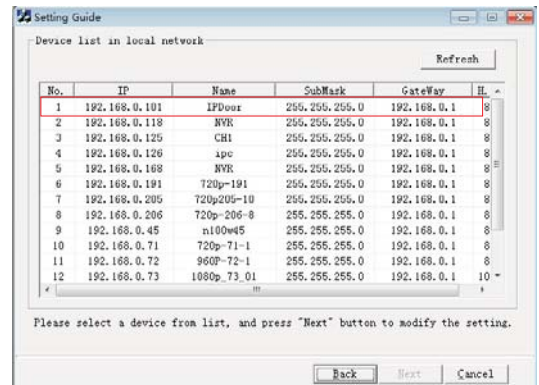
2) Copy the quick setting guide program "HiCamSearcher_v1.1.exe" from the installation CD to user's PC, and run it on PC.



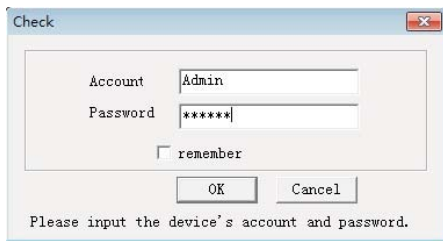
3) Press "Next" button, pop-up as below interface. Click "Refresh" button and online devices on LAN will be shown on the list.



4) Select a device from the list, and press "Next" button to modify the setting, pop-up as below interface.



5) Options "IP Address", "Sub Mask" and "Gate way" can be modified. Click "Modify" button, pop-up as below interface. Input the device's right account and password (default account of administrator is "Admin" and default password of administrator is "888888").

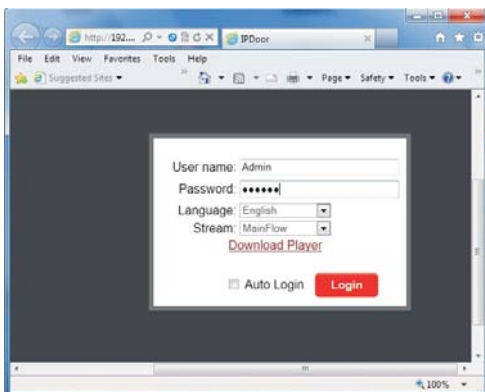


6) Click "OK" to confirm device parameters configuration.

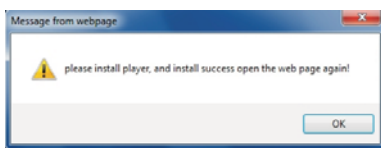
2.5 System Login

1) Open the web browser, and enter IP address "http://XXX.XXX.XXX.XXX".

Note: If the device is connected to the WAN, the IP address should be a public IP address. The system will automatically enter the GUI as follows.



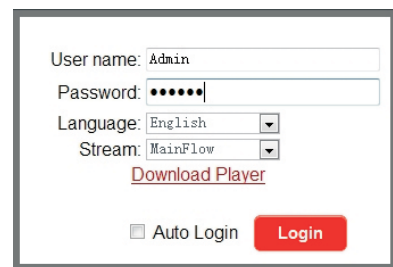
2) Click "Login", if users access the device on the PC for the first time, it will pop up a window as below, click "ok" and install player on the PC according to the following method.



Click "Download Player" and download the file "IPDoor.zip" to the PC. Open the zip file to run the file "IPDoor.exe" and it will install indoor unit's OCX on the PC (according to the method as following figures).



3) After installing player on the PC, input the authorized user name and password, the default user name is "Admin" and the default password is "888888". Select language "English" or "Chinese", choose network stream "Main Flow" or "Minor Flow", and then click "Login". "Auto Login" indicates that it will enter into "Home" interface automatically when the device will be connected to the web browser again on the same PC.



4) After login, it will enter into "Home" interface of the live view as follows.



2.6 Port Forwarding

If visit indoor unit via Internet Explorer browser from WAN, you must do port forwarding on the router. Port Forwarding is used to transfer information from your router directly to your computer or indoor unit through Ports. What is a Port? Ports are openings through your computer that allow data in you computer/indoor unit. The World Wide Web for example uses Port 80. Anytime you go to a website, that goes over that specific port. The reason we need to forward certain ports for your indoor unit is so that you can View your cameras over the Web (internet). Take Netgear router for example.

A few things that you need to find out about your Internet Connection:

* Do you have a Static IP or Dynamic IP? To find this out, contact your Internet Service Provider and they should be able to tell you.

* If you have a Dynamic IP or PPPoE ADSL, you will need to set up an Account on DDNS (www.dyndns.org or www.3322.org). That way when your IP changes, you can connect to the same Hostname (ex: my.dyndns.org) everytime you connect. In other words, it makes your Dynamic IP a static host address. This is very important if you want to connect to your indoor unit remotely.

* Find out what equipment you are using from the Internet Service Provider. If it is a modem, then you should be fine just configuring your router that's connected to it. Make sure to get the username and passwords for any router you may have. If you can not log in to the router, you will not be able to complete this setup. You may have to contact your Internet Service Provider for this information.

Take Netgear router for example.

Operation Steps:

- 1) After login the interface of the router, choose "Port Forwarding";
- 2) Choose "Add custom Service";
- 3) Input indoor unit ports, including http port(default as 80) and mobile port(default as 20510);
- 4) Input IP address of the indoor unit, click "Apply" (the HTTP port, the mobile port and IP address should be the same as the following figure which set by your own).

23

Note: Different router has different settings for port forwarding; please kindly follow your router guide to do the port-forwarding.

After the port-forwarding is done, you could view the indoor unit from WAN now.



2.7 Function Settings

Options in the main interface include "Home", "Media", "Parameters" and "System". Click any option to access it.

2.7.1 Home

Click "Home" to enter the window for live video as follows, it includes video window, control buttons and Image Settings.

Video window: Double click the real-time video then it will display video full-screen. Double click it again then it will recovery default window.

Control buttons:

Record: Click "Record" button, which could record the video with audio and store it at the present path. When recording, the button "Record" will change to "Stop". Click the button "Stop" again, and then the record stops.

Capture: Click the capture button, which could take photos for the current video and store the image at the present path.

Image Settings:

Hue: Adjust hue of image. Values can be set from 0~100. By default, the value is set at 50.

Brightness: Adjust brightness of image. Values can be set from 0~100. By default, the value is set at 50.

Contrast: Adjust contrast of image. Values can be set from 0~100. By default, the value is set at 50.

Saturation: Adjust saturation of image. Values can be set from 0~100. By default, the value is set at 50.

Powerfreq (Power Line Frequency): Options include 50HZ and 60HZ. If the monitoring site adopting lighting elimination, user should set a corresponding frequency. If the two frequencies are different, the image will flick. There are two frequencies on the world, one is 50HZ, and the other is 60HZ. In China, adopt 50HZ.

Click "Refresh" to refresh the settings of the Image, and click "Default" to restore the parameters of the image to the default settings.

24

Stream: Set up network stream, including main flow and minor flow.

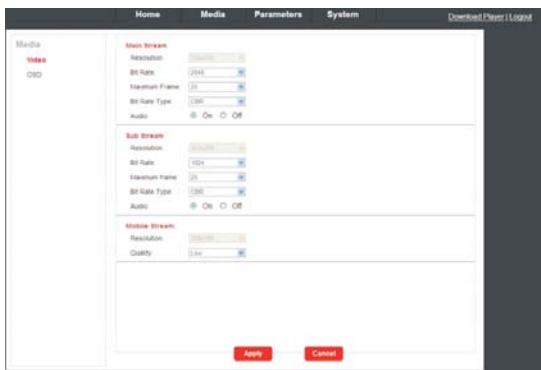
Image: Set up the size of view image. Options include Fit size and Src size.

2.7.2 Media

Click "Media" to enter the media parameter setting menu. This interface includes settings for Video and OSD.

2.7.2.1 Media--Video

Click "Media—Video" to access the interface as follows. And user can set up parameters of main stream, sub stream and mobile stream.



A. Video—Main Stream and Sub Stream

- 1) **Resolution:** For the resolution of main stream, there is only D1(720*576). And for the resolution of sub stream, there is only CIF (352*288). The bigger the resolution is, the clearer the image will be. On the other hand the bit rate is bigger and takes more bandwidth.
- 2) **Bit Rate:** User can choose a certain bit rate, generally speaking, the bigger the bit rate is, the clearer the image will be. Please choose the suitable bit rate according to your bandwidth. If you select a big bit rate, while the bandwidth is worse, it will cause the video stream can't be transferred smoothly, the video quality will be not perfect too. The default bit rate value of main stream is 2048kbps. And the default bit rate value of sub stream is 1024kbps.
- 3) **Maximum Frame:** User can choose a certain frame rate, when the bandwidth is limited, suggest reducing the value. Generally, the video is fluency if the value is more 15 frames. Default value is 30 frames for NTSC norm and is 25 frames for PAL norm.
- 4) **Bit Rate Type:** There are three modes for bit rate control, CBR, VBR and FixQp. If user choose CBR mode, the video encoder will encode according to the bit rate you have selected. If user choose VBR mode, the video encoder will consider to the image quality and encode according to the bit rated have been selected, but not strictly according to this bit rate. Suggest VBR mode.
- 5) **Audio:** Options include "On" and "Off".----(Optional)

B. Video—Mobile Stream

- 1) **Resolution:** The resolution of mobile stream is QVGA(320*180).
- 2) **Quality:** The image quality of the outdoor camera for remote access viewing via mobile phone. And there are five options: "Very High", "High", "Normal", "Low" and "Very Low". The better the

25

image quality is, the bigger the bit rate and the frame rate of the outdoor camera are. Please choose the suitable quality according to your bandwidth.

2.7.2.2 Media--OSD

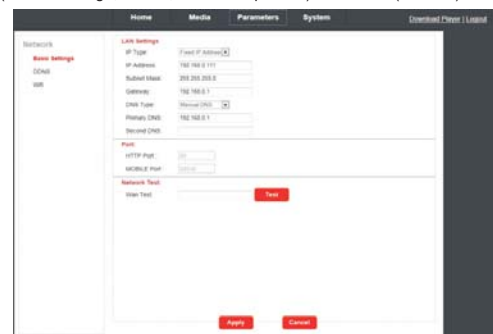
Click "Media—OSD" to access the interface as follows. OSD options include "Time Stamp", "Device Name" and "Name".



- 1) **Time Stamp:** From this field, users can decide time stamp will be shown on the home page for live viewing as the OSD (On-Screen Display) string wether or not.
- 2) **Device Name:** User can add the equipment's name on the home page for live viewing through this setting.
- 3) **Name:** Users can modify the name of the indoor unit. Note that the name of the device must not exceed twelve arabic numbers, letters or twelve Chinese characters.

2.7.3 Parameters

Click "Media" to enter the parameters setting menu. This interface includes settings for Network (Basic Settings, DDNS, and Wifi-optional) and Event (Record).



26

2.7.3.1 Network--Basic Settings

Click "Parameters—Network—Basic Settings" to enter the LAN Settings interface. Default IP address of the equipment is 192.168.0.111. The user can set up device network parameters through the operation "Quick Setting Guide", user can change it according to your network environment.

Network

Basic Settings

DDNS

WiFi

LAN Settings

IP Type: Fixed IP Address

IP Address: 192.168.0.111

Subnet Mask: 255.255.255.0

Gateway: 192.168.0.1

DNS Type: Manual DNS

Primary DNS: 192.168.0.1

Second DNS:

Port:

HTTP Port: 80

MOBILE Port: 20510

Network Test:

Wan Test: [Test]

A. LAN Settings

[IP Type]: There are two options: "Fixed IP Address" and "dynamic IP Address".

After selecting an Internet connection setting - such as fixed IP address (static) or dynamic IP address (DHCP) – and allocating a port, users can access the indoor unit remotely via the Internet.

1) If fixed IP address has been selected, it is necessary to set up an IP address, a subnet mask and a gateway.

[IP Address]: Enter the IP address in this field.

[Subnet Mask]: Input numbers for the subnet mask.

[Gateway]: Enter numbers for the default gateway.

[DNS Type]: Options include "Manual DNS" and "From DHCP Server". If users select "Manual DNS", they have to input numbers for primary DNS and second DNS manually.

2) If DHCP is selected, the server will allocate a IP address automatically.

NOTE: Save the IP address when selecting DHCP and the IPC will automatically connect with the server. It will allocate an IP address when the connection is stable, and this address will be displayed on the interface.

B. HTTP

[HTTP Port]: The IP address identity one indoor unit in the network, you can run several programs on this equipment, and every program will transfer the data through some port, in fact data is transferred from one port to another. The port setting of this page is asking user choose which port to transfer the data for the web server. Doing port mapping, need to maintain consistent with the port (equipment factory default port is 80). Sets up a Web browser port via HTTP. The default port number is "80".

[Mobile port]: Mobile monitoring port. And default value is 20510.

C. Network Test

[Wan Test]: In this field, users can fill in the IP address or DDNS address which they set up, and click "Test" to test the network traffic is normal or not. If all the network parameters are set correctly, click "Test" and "Test Success!" will be shown. Otherwise "Test Failure!" will be shown.

2.7.3.2 Network--DDNS

Click "Parameters-Network-DDNS" to enter the DDNS setting interface. DDNS setup as follows. User can use third part DDNS, first user must have a domain name; www.dyndns.org or www.3322.org is recommended. Please remember the username, password and domain name. Then enable DDNS, for example, select the DDNS Provider as "3322.org". If your domain name is "test.f3322.org", please enter "test.f3322.org" in the option "Your Domain", the "Username" and "Password" is the username and password that applied in the www.3322.org. Click "Apply" to save. Then you can access the device by domain name.

Home Media Parameters System Download Player / Logout

Network

Basic Settings

DDNS

WiFi

Dynamic DNS:

Status: On

Provider: 3322.org

Username: username

Password: password

Your Domain: test.f3322.org

Apply Cancel

2.7.3.3 Network--Wifi(Optional, please take actual machine as quasi)

For the indoor unit with WIFI function, users can visit the device remotely by the following methods: through network cable connection or through wireless connection. If through wireless connection, please use the network cable to connect the device into LAN before doing settings of wireless connection. Then click "Parameters—Network—WiFi" to enter the Wifi Setting interface, and according to the below 1-6 steps to do the settings.

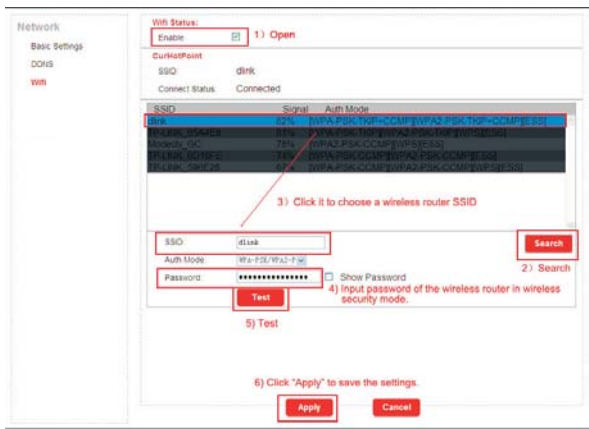
- 1) Open wireless, "Enable" indicates WIFI status to be enabled.
- 2) Click the "Search" button to search the current wireless routers, and all the wireless routers will appear on the Current Hot Point list.
- 3) Choose one effective router, click it to choose router SSID.
- 4) Input correct password of the wireless router in wireless security mode.
- 5) Click "Test" to check the wireless network is connected successfully or not.
- 6) When the wireless is connected successfully, click "Apply" to save the settings, the device will be reboot automatically, take away the Ethernet cable, then the wireless network will work perfectly.

NOTE:

1. When adjust WIFI status, the device will reboot after saving the setting.
2. When enable WIFI status, the device will reboot automatically if plug or unplug the crystal head of network cable to the RJ45 ethernet interface of the indoor unit.
3. Through Wifi connection, the "Network Type" on the Network Basic Setting suggested to be set as "DHCP". When configure the parameters about WIFI, user can view the indoor unit can be allocated IP address whether or not through the search tool "HiCamSearcher".

If not, user must set up parameters about Wifi again.

4. When the equipment connected to the Internet, and also enable the WIFI, when activated, the equipment will be the first to choose Ethernet cable connection mode, if can't connect, then choose WIFI connection. WIFI connection of the ports to use are consistent with cable connection of the ports to use.



2.7.4 System

Click "System" to enter the parameters setting menu. This interface includes settings for User, Time setting, Initialize, Device info, Storage Device and System Logo.



2.7.4.1 System-User

Click "System—user" to access user setting menu, the default username and password of administrator is "Admin" and "888888".



2.7.4.2 System-Time Setting

Click "System—Time setting" to access time setting menu. There are four types of time mode: keep current, manual, Sync with computer time and Sync with NTP.

1) "Keep Current" means the system time won't be changed.

Adjust:

Date & Time: 2014-03-14 17:00:54
 Mode: Keep Current
 Time Zone: (GMT+08:00) Beijing, Chongqing, HongKong, Urumqi

2) "Manual" means adjust time manually. Users need to enter date & time and time zone manually.

Adjust:

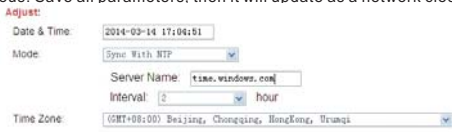
Date & Time: 2014-03-14 17:02:34
 Mode: Manual
 Date: 2014 - 03 - 14
 Time: 16 : 58 : 1
 Time Zone: (GMT+08:00) Beijing, Chongqing, HongKong, Urumqi

3) "Sync with computer time" means through this apply to sync IPC system time to local PC time.

Adjust:

Date & Time: 2014-03-14 17:02:57
 Mode: Sync with computer time
 Computer Time: 2014-03-14 16:58:51
 Time Zone: (GMT+08:00) Beijing, Chongqing, HongKong, Urumqi

4) **"Sync with NTP"** will choose a same time zone with the NTP server automatically. Server name is the NTP server host, and the interval of refresh time includes 1 hour, 2 hours, 12 hours and 24hours. Save all parameters, then it will update as a network clock.



5) **Delay push(s)**: From this field, user can adjust delay duration time of alarm push for visitor calling when nobody answers on the indoor unit, and values can be set from 0 to 60s. For example, to select 5s, if visitor presses the call button on the outdoor camera, the message will be pushed onto the master's phone after 5 seconds when nobody answers on the indoor unit.

2.7.4.3 System-Initialize

Click "System—Initialize" to access initialize setting menu. This interface includes settings for Reboot, Factory Default and Upgrade.

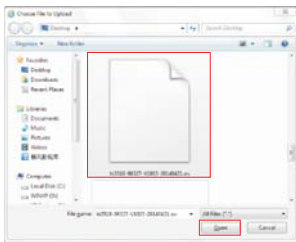


1) **Reboot**: Click "OK", it will pop-up a message window "the device will be rebooted. Are you sure?", and click "OK" to restart the equipment.

2) **Factory Default**: Click "OK", it will pop-up a message window "Set up data will be initialized. Are you sure?" Click "OK" to restore all the parameters to the default settings except IP address.

3) **Upgrade**: Click "Browse..." to select the firmware file for upgrading, for example, the firmware file such as "hi3518-96327-V1003-20140421.ov" is on the desktop. First choose the firmware file, click "Open", and it will be shown as "upgrade". Then click "Apply" to upgrade the equipment whether or not. After the upgrading, the equipment will restart.

Note: During upgrading, please don't power off the indoor unit.



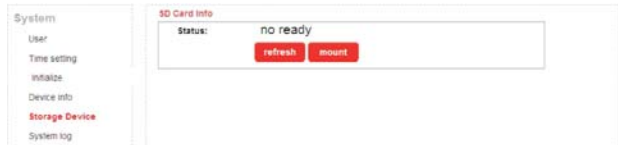
2.7.4.4 System-Device Info

Click "System—Device Info" to enter the "Device Information" menu as follows. The information included accessible through this interface includes: Device Info (Device Name, Device ID, Software Version, Release date and Start Time), Network Info (Connection, Mac, IP, Subnet Mask, Gateway, Primary DNS and Second DNS).



2.7.4.5 System-Storage Device

Click "System—Storage Device" to enter the interface of SD card information as follows. The option "status" for the models without SD card will show "no ready".



The option "status" for the models with SD card (if the SD card was already inserted into the indoor device) will show as below.



Click "refresh" to refresh the SD card status. Click "remove" to make sure to remove the SD card whether or not. Click "format" to make sure to format the SD card data whether or not. Click "browse..." can browser files in the SD card.

Index of /sd/			Index of /sd/011/		
Name	Size(Byte)	Date	Name	Size(Byte)	Date
011		2014-04-16 09:44:35	Parent Folder		2014-04-14 15:21:30
			20140415		2014-04-15 15:29:48
			20140416		2014-04-16 09:44:35
Total 1 Files.			Total 4 Files.		

According to the above figure for example, click "011->20140414->rec001" to enter into the record list. Click one on the list to playback the record. Click "Parent Folder" to back to the parent directory.

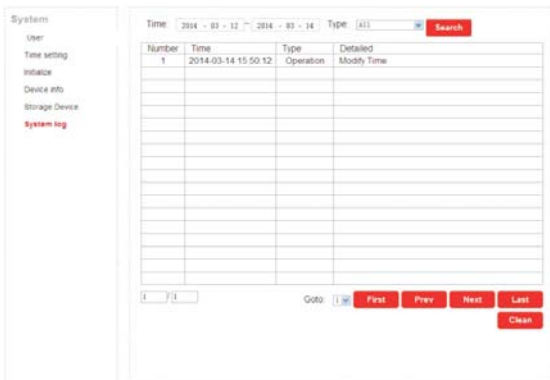
Index of /sd/011/20140414/rec001/

Name	Size (KByte)	Date
Parent Folder		
rec_log	3KB	2014-04-14 16:14:38
rec011_20140414152137_02.	4310KB	2014-04-14 15:21:56
rec011_20140414152157_02.	4269KB	2014-04-14 15:22:16
rec011_20140414152216_02.	4270KB	2014-04-14 15:22:34
rec011_20140414152236_02.	397KB	2014-04-14 15:22:38
rec011_20140414152432_02.	2097KB	2014-04-14 15:24:42
rec011_20140414152444_02.	4152KB	2014-04-14 15:25:02
rec011_20140414152502_02.	4270KB	2014-04-14 15:25:22
rec011_20140414152522_02.	4270KB	2014-04-14 15:25:40
rec011_20140414152641_02.	656KB	2014-04-14 15:26:44
rec011_20140414161340_02.	4176KB	2014-04-14 16:13:58
rec011_20140414161359_02.	4283KB	2014-04-14 16:14:16
rec011_20140414161417_02.	4268KB	2014-04-14 16:14:36
rec011_20140414161437_02.	479KB	2014-04-14 16:14:38

Total 15 Items.

2.7.4.6 System-System Log

Click "System—System Log" to enter the "system log" menu as follows.
 At the top of the "Log Search" page are the following filters to facilitate locating the desired file(s):
[Time]: Set the starting time and the ending time of the log being searched for.
[Type]: Choose from the following options: "All", "Alarm" and "Operation".
 Click the "Search" button after setting the log time and type, and the system will display the selected log in the list. Click "First", "Prev", "Next", "Last" to navigate pages, and click "Clean" to delete all the log lists.



2.7.5 Logout

Click "Logout" to log out of the system.

2.7.6 Record(Optional)

The models without SD card can't record.
 For the models with SD card, if the SD card was already inserted into the indoor device, when some visitor press the "Call" button on the outdoor camera, the indoor device will start recording and the video data will be stored onto the SD card.

The record can playback on PC.

Note: For the models with SD card, the SD card inserted into the indoor device must be formatted first before using.

3. Mobile Phone Software Visit

This IP video door phone can transmit live feed to your mobile phone, and support P2P for mobile monitoring, so that you can have 'on the go' access to your surveillance system from virtually anywhere. To view, you must install a mobile operating system specific program into your mobile. Currently, there are a limited number of phones that are supported: Google Android and Apple iPhone or iPad. The Android mobile program is located on the included CD or downloaded via "Play Store", and an iPhone mobile program or an iPad program is downloaded via "APP Store". In "APP Store" or "Play Store", please search for "MobileEyeDoor+". Please see the instruction manual for your mobile to install the program.

Note:
When users access one indoor device via the software "MobileEyeDoor+" on smart-phone, you can view the video image of one outdoor camera connected to the device once, and can't view all images of outdoor cameras connected to the same indoor unit simultaneously.

The device with WIFI function can work in wired network and wireless network. The method to set up WIFI function of the device and add a new device via a smart-phone please refer to section **2.2 Soft AP Function.**

In wired mode or the indoor device has been connected to a wireless router, use can add the indoor device via a smart-phone according to the following section.

3.1 Iphone Mobile or Ipad

The iPhone or iPad application, like all iPhone or iPad applications, needs to be downloaded directly from the App Store. Open APP store, search for "MobileEyeDoor+", it's a free application. The application on the iPad could be searched for "iPad Only" or "iPhone Only".

(1) "MobileEyeDoor+" installation

According to the following method, open the App store, touch "Search" and search for "MobileEyeDoor+". Install it on the mobile phone or the iPad. After installing "MobileEyeDoor+", it will appear a "MobileEyeDoor+" icon on the application software.

(2) How to use "MobileEyeDoor+"

1> Click the "MobileEyeDoor+" icon to run the program. Click "Next" to go into next interface, then click "Add a wired device & ...lled wireless device", first please choose the adding type, there are three methods to add device: "Scan QR Code", "Manually enter" and "LAN Search".



A. Adding by "Scan QR Code"

Click "Scan QR Code" to the next interface, users can scan QR code attached to the machine through the mobile phone or the iPad, and the device UID will be shown.

B. Adding by "Manually enter"

Click "Manually enter" to the next interface, users can add a new device by UID type or by IP type.

a. By UID type

After entering the "UID Type" Settings menu, the following fields will need to be completed:



Name: Set name for the indoor unit, and saves settings for future usage.

UID: The device UID (UID is attached to the machine).

User: The user name set for entering the indoor unit system. The default is "Admin".

Password: The password set for entering the indoor unit system. The default is "888888".

Channel Number: Set the max channels of the device will be connected.

Click "Done" to save.

b. By IP type

Click "IPType" to enter the Settings menu, the following fields will need to be completed:



Name: Set name for the indoor unit, and saves settings for future usage.

Address: The public IP address or dynamic domain name of the indoor unit.

Port: The mobile port of the indoor unit for remote access viewing via mobile phone or iPad, the default is "20510".

User: The user name set for entering the indoor unit system. (Admin by default)

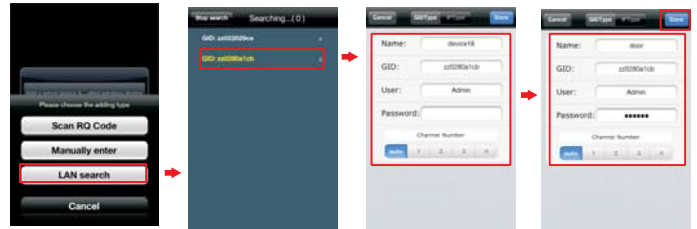
Password: The password set for entering the indoor unit system. (888888 by default)

Channel Number: Select the max channels of the device will be connected.

Click "Done" to save.

C. Adding by "LAN Search"

On LAN, turn on the WIFI of the Wireless Router and the mobile phone(or the ipad). Click "LAN Search" and online devices will appear on the "Please choose the device" list, click one to add the device, the following fields will need to be completed:



Name: Set name for the indoor unit, and saves settings for future usage.

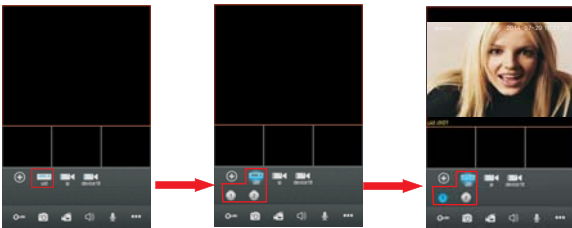
User: The user name set for entering the indoor unit system. (Admin by default)

Password: The password set for entering the indoor unit system. (888888 by default)

Channel Number: Set the max channels of the device will be connected.

Click "Done" to save.

2> After adding the device successfully, the device will appear on the main screen. Click the device, and all the channels of the device will be shown on the screen. Click any channel and it will connect immediately. The background of the channel will be highlighted after connecting successfully (shown as follows).



3> The functions of the other icons on the live view:

- Unlock.
- Snapshot: to capture a frame of the video stream as a still photo.
- Record: Click it to start manual record video on the current channel, and the right top corner of the channel has a normal recording video symbol "[REC]". And click it again to stop manual record.
- Click it to turn the sound on or disable.
- Click it to start to talk, and the background of the button will be highlighted. Click it again to stop talking.
- Click it to display or hide the buttons "List", "Snapshot", "Settings", "Help".
- Click it to enter the device list interface.
- Click it to enter the snapshot file and record file.
- Click it to enter the local setting interface.
- Click it to enter user guide interface.

4> On the live view, users can touch a channel on the screen and drag it to the other channel position directly.

5> On the interface of "Device", user can edit the parameters of one device, click "Next" to the next interface as below. Click "Edit" to enter edit mode to adjust the parameters. Click "Done" to save. And click "Remove" to remove the information of the current device.

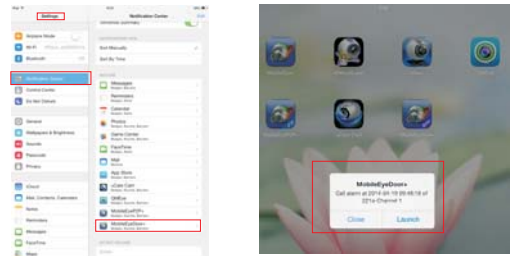


[Video Push]: To access the interface about the parameters of one device, there is an option "video push" for alarm push function. When select "On", it indicates that the alarm push function of the current device is enabled. To enable alarm push function, users need to make sure the indoor

unit and the mobile phone are both connected to internet.

Note:

- 1) First please make sure alert about the program "MobileEyeDoor+" on iPhone or iPad could be shown in Notification Center, user can enter into the menu "Settings->Notification Center->Include" to set up "Badge APP Icon, Sounds, Shown in Notification Center" to be "ON".
- 2) When the option "video push" on the mobile software interface is set to "On", someone press the call button on any outdoor camera, the notification message will be pushed onto the master's phone or iPad (Shown as below figure). And users can click the alarm list to access to the video live view of the channel directly or access to the video live view to unlock for the outdoor camera.
- 3) The alarm push function can be effective, and the device must be added by UID type.

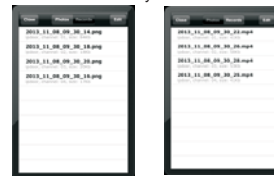


[WIFI Setting]: To access the interface about the parameters of one device, there is an option "WIFI Setting" for the indoor device with WIFI function. Click "WIFI setting", and available wireless devices will be shown on the list. Choose one and click it, if the wireless password of the wireless router is enabled, it will pop-up a window to enter the password of the wireless router, input the correct password and setting ok, the indoor device will reboot automatically, it will be connected to the wireless router after starting when hearing a beep again.

Note: If users want to connect the device via wireless network, when the device restarts automatically after completing set of the parameters about WIFI, please unplug the Ethernet cable connected to the device, otherwise the device will run via wired network.



6> Click "Photo" to enter the snapshot and record file interface. Click "Photos" or "Records" to switch display interface. Click one on the list to see the picture or the record. Click "Edit" to enter edit mode, users can remove the file list that they want to.



7> Click "⚙️" to enter the "System Settings" interface as follows.



[Video Views]: Select "1" and only one channel view will be shown on live view. Select "4" and quad channels view will be shown on live view.

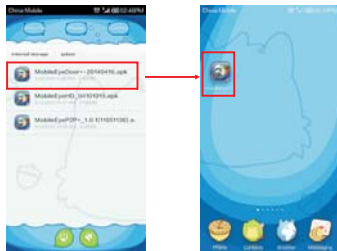
[Live Preference]: Options include "Real-time" and "Quality". If choose "Real-time", the video encoder of the channel for remote access viewing via mobile phone will consider to the frame first; If choose "Quality", the video encoder of the channel for remote access viewing via mobile phone will consider to the image quality first.

[View Preference]: To set up the image display size when view the channel video. Options include "original" and "tile".

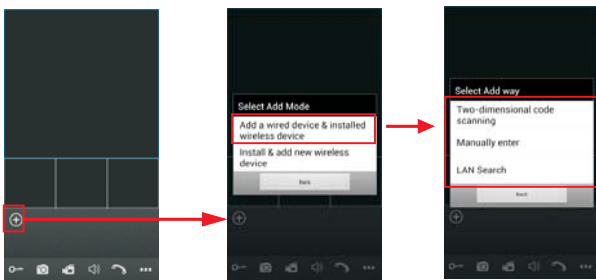
3.2 Android Mobile

1) Please go to the android software market "Play Store" to search for "MobileEyeDoor+" and install it. Or from the installation CD, copy the setup software "MobileEyeDoor+.apk" to user's Android phone or to SD card.

Open your "File Manager" in android phone, and find out the file "MobileEyeDoor+" in your android phone memory or SD card. Click it to install the software. When the application has finished installing, the icon "MobileEyeDoor+" will display on the screen of the phone (shown as below).



2) Click the "MobileEyeDoor+" icon to run the program, click "⚙️" to the next interface, first please choose the adding mode "Add a wired device & installed wireless device", and on the interface "Select Add way" to select adding type, there are three methods to add device: "Two-dimensional code scanning", "Manually enter" and "LAN Search".



A. Adding by "Two-dimensional Code Scanning"

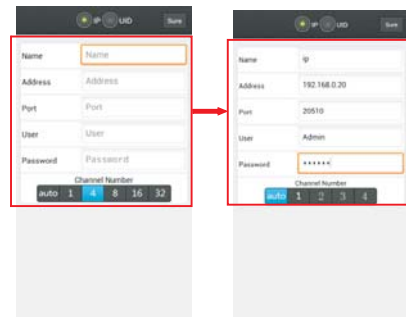
Click "Two-dimensional code scanning" to the next interface, users can scan two-dimensional code attached to the machine through the mobile phone, and the device UID will be shown.

B. Adding by "Manually enter"

Click "Manually enter" to the next interface, users can add a new device by UID type or by IP type.

a. By IP type

After entering the "IP" Settings menu, the following fields will need to be completed:



Name: Set name for the indoor unit, and saves settings for future usage.

Address: The public IP address or dynamic domain name of the indoor unit.

Port: The mobile port of the indoor unit for remote access viewing via mobile phone, the default is "20510".

User: The user name set for entering the indoor unit system. (Admin by default)

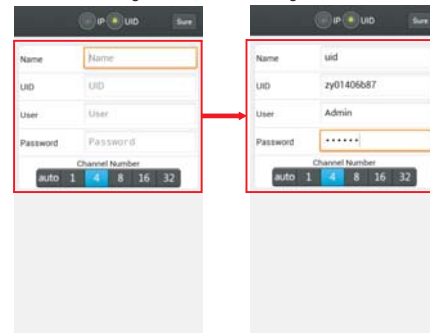
Password: The password set for entering the indoor unit system. (888888 by default)

Channel Number: Select the max channels of the device will be connected.

Click "Sure" to save.

b. By UID type

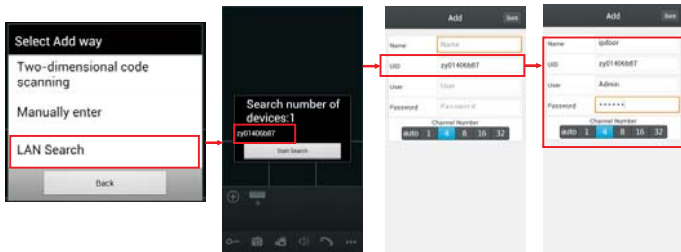
Click "UID" to enter the Settings menu, the following fields will need to be completed:



Name: Set name for the indoor unit, and saves settings for future usage.
UID: The device UID (UID is attached to the machine).
User: The user name set for entering the indoor unit system. The default is "Admin".
Password: The password set for entering the indoor unit system. The default is "888888".
Channel Number: Set the max channels of the device will be connected.
 Click "Sure" to save.

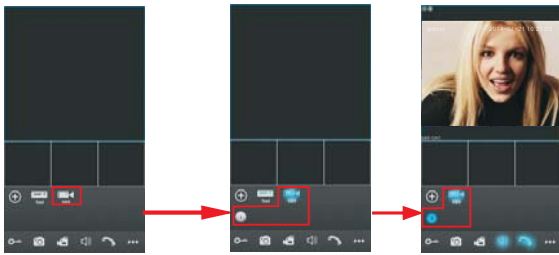
C. Adding by "LAN Search"

On LAN, turn on the WIFI of the Wireless Router and the mobile phone. Click "LAN Search" and online devices will appear on the "Search number of device" list, click one to add the device, the following fields will need to be completed:



Name: Set name for the indoor unit, and saves settings for future usage.
User: The user name set for entering the indoor unit system. The default is "Admin".
Password: The password set for entering the indoor unit system. The default is "888888".
Channel Number: Set the max channels of the device will be connected.
 Click "Sure" to save.

3) After adding the device successfully, the device will appear on the main screen. Click the device, and all the channels of the device will be shown on the screen. Click any channel and it will connect immediately. The background of the channel will be highlighted after connecting successfully (shown as follows).

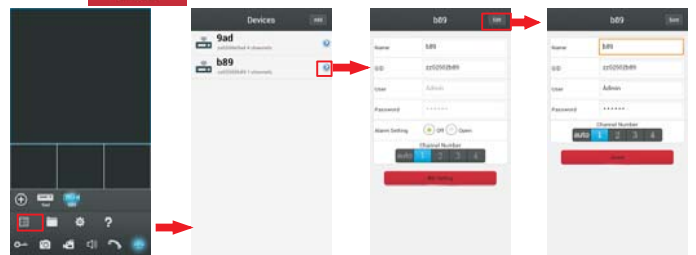


4) The functions of the other icons on the live view:

- Unlock.
- Snapshot: to capture a frame of the video stream as a still photo.
- Record: Click it to start manual record video on the current channel, and the right top corner of the channel has a normal recording video symbol "[REC]". And click it again to stop manual record.
- Click it to turn the sound on or disable.
- Click it to start to talk, and the background of the button will be highlighted. Click it again to stop talking.
- Click it to display or hide the buttons " " " " " ? " .
- Click it to enter the device list interface.
- Click it to enter the snapshot file and record file.
- Click it to enter the local setting interface.
- Click it to enter user guide interface.

5) On the live view, users can touch a channel on the screen and drag it to the other channel position directly.

6) On the interface of "Devices", user can edit the parameters of one device, click " " to the next interface as below. Click "Edit" to enter edit mode to adjust the parameters. Click "Sure" to save. And click "Delete" to remove the information of the current device.



[Alarm Setting]: To access the interface about the parameters of one device, there is an option "Alarm Setting" for alarm push function. When select "On", it indicates that the alarm push function of the current device is enabled. To enable alarm push function, users need to make sure the indoor unit and the mobile phone are both connected to internet.

Note: 1) When the option "Alarm Setting" on the mobile software interface is set to "On", someone press the call button on any outdoor camera, the notification message will be pushed onto the phone (shown as the right figure). And users can click the alarm list to access to the video live view of the channel directly or access to the video live view to unlock for the outdoor camera.

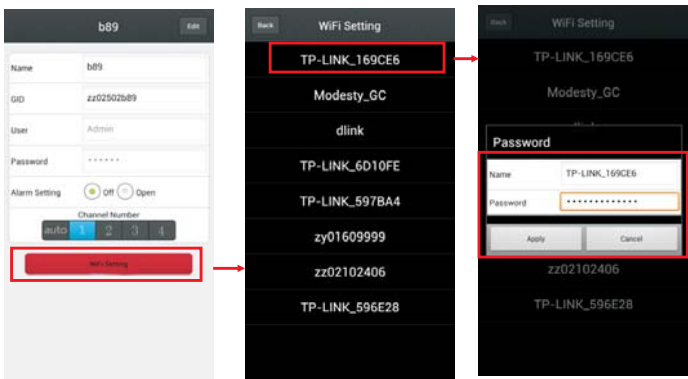
2) The alarm push function can be effective, and the device must be added by UID type.

[WIFI Setting]: To access the interface about the parameters of one device, there is an option "WIFI Setting" for the indoor device. Click "WIFI setting", and available wireless devices will be shown on the list. Choose one and click it, if the wireless password of the wireless router is enabled, it pop-up a window to enter the password of the wireless router, input the correct password and setting ok, the indoor device will reboot automatically, it will be connected to the

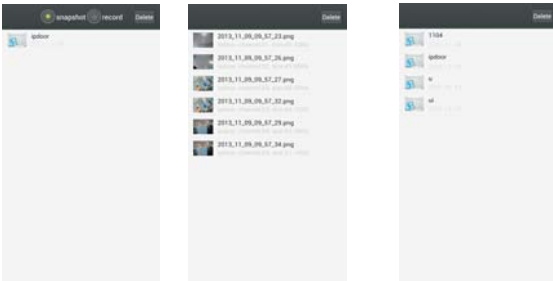


wireless router after starting when hearing a beep again.

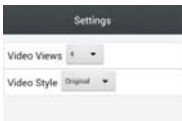
Note: If users want to connect the device via wireless network, when the device restarts automatically after completing set of the parameters about WIFI, please unplug the Ethernet cable connected to the device, otherwise the device will run via wired network.



7) Click " " to enter the snapshot and record file interface. Click "snapshot" or "record" to switch display interface. Click one on the list to see the picture or the record. Click " " to enter edit mode, users can remove the file list that they want to.



8) Click " " to enter the "System Settings" interface as follows.

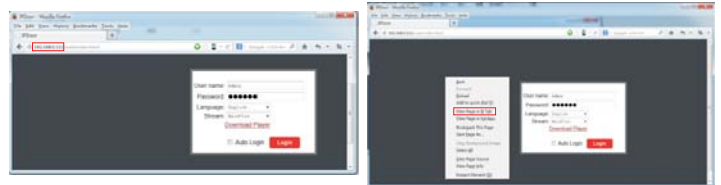


[Video Views]: Options include "1" and "4". Select "1" and only one channel view will be shown on live view. Select "4" and quad channels view will be shown on live view.

[Video Style]: Options include "Original" and "Covered".

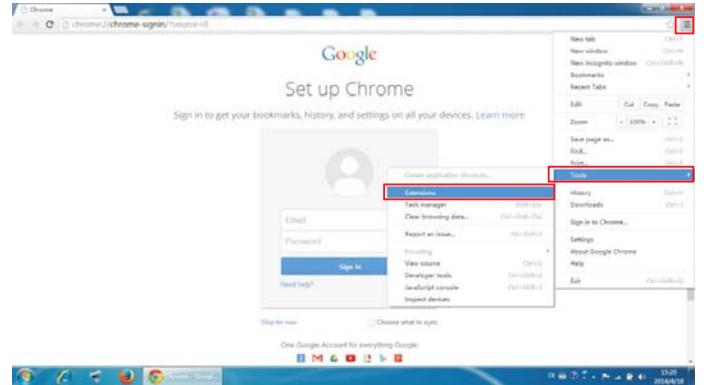
Appendix 1. Accessing the indoor unit via Mozilla Firefox

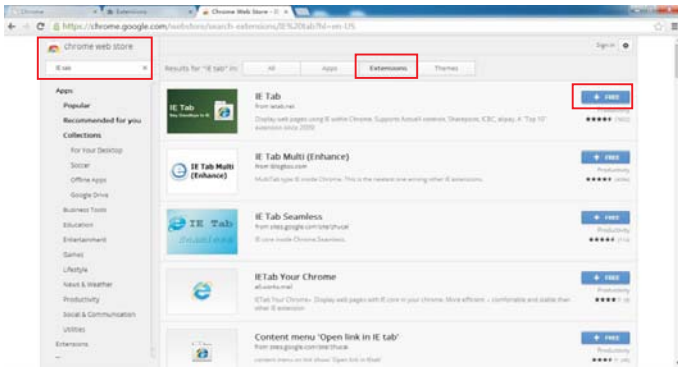
1. First, install Firefox on Windows (This document will use Firefox 28.0 as an example).
2. After installing Firefox, please search for the "IE Tab" add-on for Firefox, which can be downloaded from Firefox browser.
3. Open Firefox, click "Tools-->Add-ons" to enter into the interface of "Get Add-ons", and search for "IE Tab", all the IE tabs will be shown on the list for "Available Add-ons". Choose one and install it, this document will use IE Tab 2 (FF 3.6+) 5.12.12.1 for example.
4. After installing the IE Tab, user need restart Firefox browser.
5. Open Firefox and enter the indoor unit IP address in the address field. Right-click at blank, select "View Page in IE tab". The indoor unit can now be connected successfully.



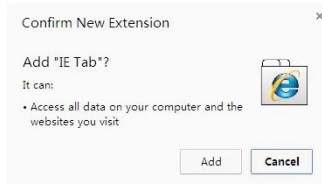
Appendix 2. Accessing the indoor unit via Google Chrome

1. First, installing Google Chrome Browser on Windows (this manual will use Chrome version 34.0.1847.116 m as an example).
2. After installing Google Chrome, search for the "IE Tab" add-on for Chrome, which can be downloaded from the Chrome Web Store.
3. Opening Chrome, click "Customize and control Google Chrome->Tools->Extensions->browse the gallery" to enter the "Chrome Web Store" interface to search for "IE Tab", and results for IE tab in Extensions will appear on the right side. Choose one to install it and it's free for installation (Shown as below).

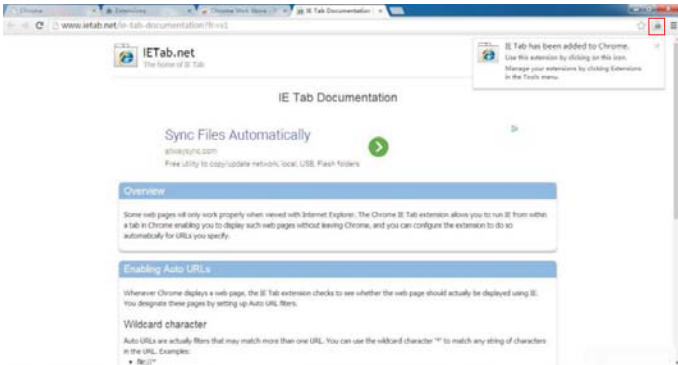




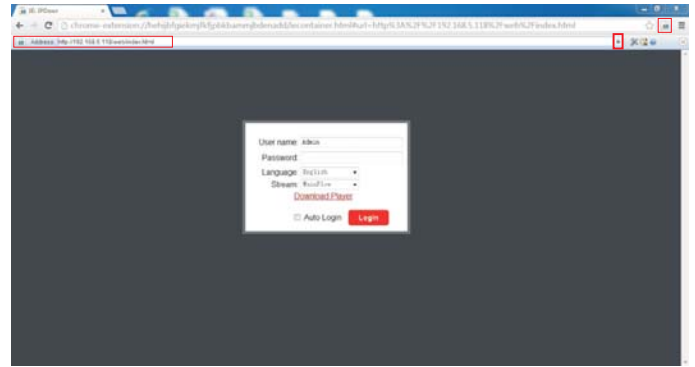
4. During installation, the following figure will appear, click "Add" to confirm to install "IE Tab" add-on.



5. After complete installation, the icon "IE" will appear on the right top of the browser interface (Shown on the red frame as below), and it means that IE Tab has been added to Chrome browser.



6. Click the icon "IE" on the right of the address field to display the Chrome web page in an IE-based page, and fill in the IP address of the indoor unit on the IE-based address bar, then click the icon "IE" to access the remote device, fill in the correct user name and password to log in. Default user name and password are "Admin" and "888888", (shown on the red frames as below)



Appendix 3 How to ensure reliable remote viewing of the indoor unit through IE browser on Win 7/Win 8 64bit OS

1. Run 32bit IE on Windows OS (64bit)

Note: On a 64-bit version of a Windows operating system, there are two versions of the Internet Explorer files:

- * The 64-bit version is "C:\Program Files\ Internet Explorer \iexplore.exe".
- * The 32-bit version is "C:\Program Files(x86) \ Internet Explorer \iexplore.exe".
- * Please run the "C:\Program Files(x86) \Internet Explorer \iexplore.exe".

2. Run Internet Explorer as the Administrator

- 1) Open folder path "C:\Program Files(x86) \Internet Explorer".
- 2) Right click the Internet Explorer icon and choose "Run as Administrator".
- 3) Click "Continue" in the User Account Control window to grant administrator access to Internet Explorer.

3. Download ActiveX control after type in IP address & Port

- 1) Open an Internet Explorer browser window to make changes to your current ActiveX controls. Click the "Tools" link located at the top of the menu bar. A drop down window will appear with several more options to choose from. Each option will let you change some of the default settings already programmed into Internet Explorer.
- 2) Click the "Internet Options" link located at the end of the list. When the pop-up window appears, select the "Security" tab to access the ActiveX controls. There are several zones with multiple security settings. Each zone has preset settings built into it. You can change the settings to fit your current needs. If for some reason you're not satisfied with these changes, click the "Reset All Zones to Default Level" to change them back. To allow ActiveX controls to run, click the "Internet" zone. The icon that identifies this zone looks like Earth.


3) Change the security level for the "Internet" zone from the default "Medium-high" zone to "Medium". Slide the bar up and down between the different security zones. The "Medium" Internet zone will allow a lower security environment for your web browsing. To go even further with enabling the ActiveX controls, click the "Custom Level" button. Under the "Settings" menu, look for the "ActiveX Controls and Plug-ins" options. Normally, these settings are disabled to prevent a security risk to your computer system.



4) Allow the ActiveX controls to automatically run by changing the settings from "Disable" to "Enable". This can be done by clicking the "Enable" button next to "Allow Previously Unused ActiveX Controls to Run without Prompt". After making these changes to your Internet Explorer browser, you won't be constantly prompted to enable the ActiveX controls. They'll automatically be allowed without prompting you to manually do so. The changes made in these settings will not take full effect until you close and restart the Internet Explorer browser window.

4. Fix site display problems with Compatibility View

Sometimes a website you're visiting doesn't look like you expect it to. Images might not show up, menus might be out of place, and text boxes could be jumbled together. This can be caused by a compatibility problem between Internet Explorer and the site you're on. When a site is incompatible with Internet Explorer, you'll see the Compatibility View button in the Address bar. You can only turn on Compatibility View in Internet Explorer for the desktop.

A. To turn on Compatibility View

1) See if the Compatibility View button  appears in the Address bar. (If you don't see the button, there's no need to turn on Compatibility View.)

2) Tap or click the Compatibility View button  to display the site in Compatibility View. Once you turn on Compatibility View, Internet Explorer will automatically show that site in Compatibility View each time you visit. You can turn it off by tapping or clicking the button again. Or, you can clear the entire list of sites using Compatibility View by deleting your  browsing history.

B. To clear the list of Compatibility View sites

Not all website display problems are caused by browser incompatibility. Interrupted Internet connections, heavy traffic, or problems with the website can also affect how a page is displayed. If you're having other problems on a site, such as playing videos, read Video won't play in Internet Explorer.

The Compatibility List is frequently updated, and Internet Explorer automatically downloads these updates. This list includes sites that might've been designed for older or other browsers, sites that use Adobe Flash Player, and other settings that help give you a better browsing experience. If you don't want these updates, you can turn off Compatibility List Updates at any time.

C. To turn off Compatibility List Updates

1) Open Internet Explorer in the desktop.
2) Press the Alt key to display the Menu bar (or press and hold the Address bar and then select Menu bar).
3) Tap or click Tools, and then tap or click Compatibility View settings.
4) Clear the Download updated compatibility lists from Microsoft check box, and then tap or click Close.

D. To change Compatibility View settings

1) Open Internet Explorer in the desktop.
2) Press the Alt key to display the Menu bar (or press and hold the Address bar and then select Menu bar).
3) Tap or click Tools, and then tap or click Compatibility View settings.

Statement

- * If there is any doubt or disputable regarding information in this manual, you can call our company for clarification.
- * There maybe some differences between the descriptions provided here and the actual devices, as our products are constantly developing and upgrading. We apologize if this manual does not contain all of the latest updates. Thanks.

FCC Notice

This device complies with Part 15 of the FCC Rules. Operation is subject to the following two conditions:

(1) This device may not cause harmful interference, and (2) this device must accept any interference received, including interference that may cause undesired operation.

NOTE 1: This equipment has been tested and found to comply with the limits for a Class B digital device, pursuant to part 15 of the FCC Rules. These limits are designed to provide reasonable protection against harmful interference in a residential installation. This equipment generates, uses and can radiate radio frequency energy and, if not installed and used in accordance with the instructions, may cause harmful interference to radio communications. However, there is no guarantee that interference will not occur in a particular installation. If this equipment does cause harmful interference to radio or television reception, which can be determined by turning the equipment off and on, the user is encouraged to try to correct the interference by one or more of the following measures:

- Reorient or relocate the receiving antenna.
- Increase the separation between the equipment and receiver.
- Connect the equipment into an outlet on a circuit different from that to which the receiver is connected.
- Consult the dealer or an experienced radio/TV technician for help.

NOTE 2: Any changes or modifications to this unit not expressly approved by the party responsible for compliance could void the user's authority to operate the equipment.