

OPERATION INSTRUCTION

4-Wire IP Video Door Phone User Manual

Statement

- * If there is any doubt or disputable regarding information in this manual, you can call our company for clarification.
- * There maybe some differences between the descriptions provided here and the actual devices, as our products are constantly developing and upgrading. We apologize if this manual does not contain all of the latest updates.Thanks.

LIMITATION OF LIABILITY

- ※ This users' manual is supplied 'as is', with no warranties, be it expressed or implied, including, but not limited to, the implied warranties of merchantability, suitability for any exact purpose, or non-infringement of any third party's rights.
- ※ This publication may include technical inaccuracies or types. The manufacturer holds the right to introduce any changes to the information contained herein, for any purpose, including but not limited to, improvements of the publications and/or related to the product, at any time, without prior notice.

DISCLAIMER OF WARRANTY

The supplier shall not be liable to any party or any person, except for replacement or reasonable maintenance of this product, for the cases, included but not limited to the following:

- ※ Any damage or loss, including but not limited to: direct/indirect, consequential, special, exemplary, arising out of or related to the product;
- ※ Inappropriate use or negligence of the user in operation of the product, resulting in personal injury or any damage;
- ※ Unauthorized disassembly, repair or modification of the product by the user;
- ※ Any problems or consequential inconvenience, loss or damage, caused by connecting this product to devices of the third parties;
- ※ Any claim or action for damages, brought by any photogenic subject, be it a person or organization, due to violation of privacy whereby the pictures taken by the device and/or saved data become public or are used for the purposes other than intended.

SAFETY INSTRUCTIONS

- ※ Read these instructions and keep them in a safe place for future reference.
- ※ Please refer all work related to the installation of this product to qualified service personnel or system technician.
- ※ Do not operate the appliance beyond its specified temperature, humidity or power source ratings.
- ※ Securely install the devices on vertical surfaces (solid walls/doors) not prone to vibration or impact.
- ※ Install the devices away from heat sources such as radiators, heat registers and stoves. Installation of the terminal near consumer electronics devices, e.g. stereo receiver/amplifiers and televisions, is permitted as long as the air surrounding the terminal does not exceed the above mentioned temperature range.
- ※ Handle the appliance with care. Do not strike or shake, as this may damage the device.

- ※ The doorbell/camera units should be fitted with an approved weather shield if the chosen position is in direct sunlight, or in contact with rain, snow or irrigation sprinkler systems.
- ※ Do not use strong or abrasive detergents when cleaning the appliance body. When the dirt is hard to remove, use a mild detergent and wipe gently.
- ※ Do not overload outlets and extension cords as this may result in a risk of fire or electric shock. Distributing, copying, disassembling, reverse compiling, reverse engineering, and also exporting in violation of export laws of the software provided with this product, is expressly prohibited.

CARING FOR THE ENVIRONMENT BY RECYCLING



When you see this symbol on a product, do not dispose of the product with residential or commercial waste.

Recycling your electrical equipment

Please do not dispose of this product with your residential or commercial waste. Some countries or regions, such as the European Union, have set up systems to collect and recycle electrical and electronic waste items. Contact your local authorities for information about practices established for your region.

COPYRIGHT STATEMENT

All rights reserved. No part of this publication may be reproduced in any form or by any means, transcribed, translated into any language or computer language, transformed in any other way, stored in a retrieval system, or transmitted in any form or by any means, electronic, mechanical, recording, photocopying or otherwise, without the prior written permission of the owner.

FCC STATEMENT

This equipment has been tested and found to comply with the limits for a Class B digital device, pursuant to Part 15 of the FCC Rules. These limits are designed to provide reasonable protection against harmful interference in a residential installation. This equipment generates uses and can radiate radio frequency energy and, if not installed and used in accordance with the instructions, may cause harmful interference to radio communications. However, there is no guarantee that interference will not occur in a particular installation. If this equipment does cause harmful interference to radio or television reception, which can be determined by turning the equipment off and on, the user is encouraged to try to correct the interference by one or more of the following measures:

- Reorient or relocate the receiving antenna.
 - Increase the separation between the equipment and receiver.
 - Connect the equipment into an outlet on a circuit different from that to which the receiver is connected.
 - Consult the dealer or an experienced radio/TV technician for help.
- Changes or modifications not expressly approved by the party responsible for compliance could void the user's authority to operate the equipment.

The distance between user and products should be no less than 20cm

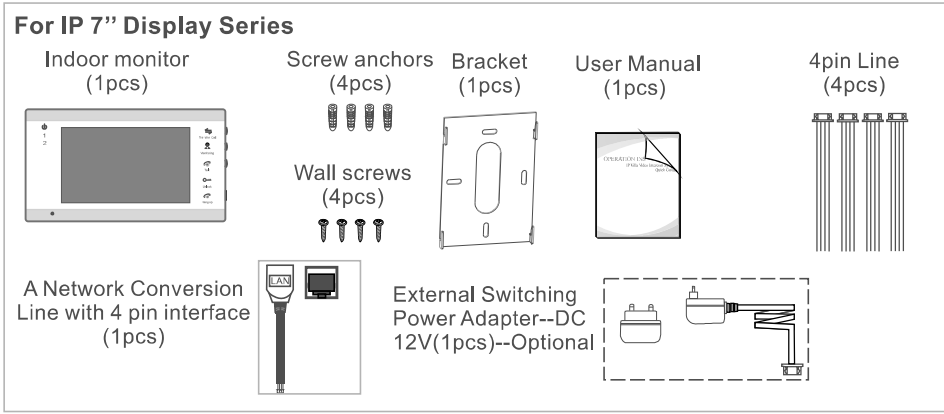
Table of Contents

LIMITATION OF LIABILITY.....	1
DISCLAIMER OF WARRANTY.....	1
SAFETY INSTRUCTIONS.....	1
CARING FOR THE ENVIRONMENT BY RECYCLING.....	2
COPYRIGHT STATEMENT.....	2
Table of Contents	3
1. Description Of The Indoor Monitor	5
1.1 Fittings.....	5
1.2 Wiring Diagram.....	5
1.3 Note On Wiring Connection.....	6
1.4 Installation Process.....	6
1.5 Specifications.....	7
1.6 Description On Indoor Monitor.....	8
1.7 Operation Introduction On Indoor Monitor	9
2. System Settings For Indoor Monitor.....	13
2.1 Device Connect--Through wired network or wireless network.....	13
2.2 AP Mode	14
3. Web Browser Operation	15
3.1 Running Environment.....	15
3.2 Quick Setting.....	15
3.3 System Login	17
4. Port Forwarding.....	19
5. Function Settings.....	20
5.1 Home.....	20
5.2 Media	21
5.2.1 Media--Video.....	22
5.2.2 Media--OSD	22
5.3 Parameters	22
5.3.1 Network--Basic Settings	22
5.3.2 Network--DDNS	23
5.3.3 Network--E-mail.....	23
5.3.4 Network--Wifi.....	24
5.3.5 Network--Motion Detect.....	25
5.3.6 Event--Record.....	27
5.4 System.....	27
5.4.1 System-User	27
5.4.2 System-Time Setting	28
5.4.3 System-Initialize	29
5.4.4 System-Device Info	30

5.4.5 System-Storage Device.....	30
5.4.6 System-System Log.....	31
5.5 Logout.....	31
5.6 Record.....	31
Appendix 1. Accessing the indoor monitor via Mozilla Firefox	32
Appendix 2. Accessing the indoor monitor via Google Chrome	32
Appendix 3 How to ensure reliable remote viewing of the indoor monitor through IE browser on Win 7/Win 8 64bit OS.....	34

1. Description Of The Indoor Monitor

1.1 Fittings

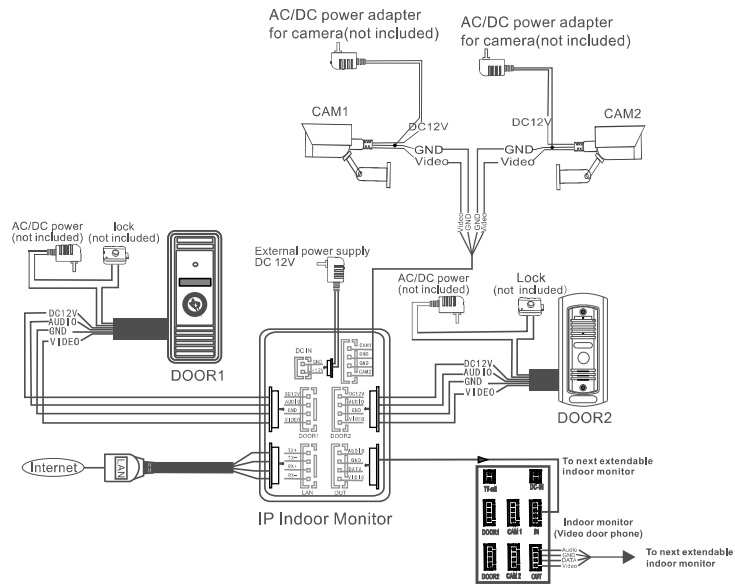


1.2 Wiring diagram

For IP 7" display series, user can connect up to two outdoor doorbells, two CCTV cameras and three extendable indoor monitor(video door phone) one by one to the corresponding interfaces by their own's requirement according to the following wiring diagram. The ethernet connector is a 4 pin connector, user needs to connect a network conversion with 4 pin interface to it(shown as below for example).

Note: 1. The indoor monitor uses an external switching power supply or a built-in power supply is optional, please check actual model.

2. The CCTV camera must use an external switching power supply.



1.3 Note On Wiring Connection

- The electric lock and power supply of electric lock are not included in the package, you can purchase an electric lock which is suitable for your need.
- In the standard delivery the system supports locks with Normally Open (N.O.) door unlocking method. It means that in the normal state the dry contact is opened so the lock is kept under constant closed state. If the unlocking push-button is pressed and the dry contact is changed to closed, then the lock is released.

Warning: Please check that the socket of power supply(silk printing J1) is correct if you connect the external switching power supply, otherwise it will damage the device.



Warning: Please note the silk printing marked on PCB in order to avoid incorrect connecting. The wiring connection requirement:

- 4C ordinary non-STP wiring cable;
- Effective distance from the outdoor camera to furthest indoor monitor:
 - Transmission $\leq 28m$ (4x0.2mm²)
 - Transmission $\leq 50m$ (4x0.3mm²)
 - Transmission $\leq 80m$ (4x0.5mm²)



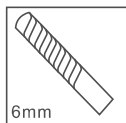
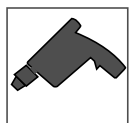
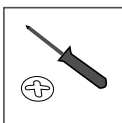
- Warning:** Wiring connection according to the following to avoid interference:
- Correct connection: Power+ and Video on one side, Audio and GND on the other side. (Marked with a checkmark)
 - Incorrect connection: Power+ and GND on one side, Video and Audio on the other side. (Marked with an X)

1.4 Installation Process



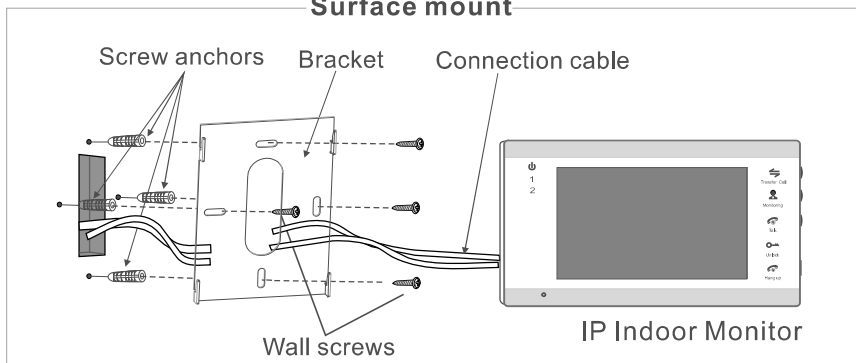
- NOTE:**
- Avoid installation of the device near strong radiation e.g. TV set and PC etc.
 - Maintenance should be complied with a qualified technician.
 - Avoid hard shake, beating and collision, otherwise the internal exact components maybe be damaged.
 - Select the most suitable position where the monitor is located at user's eye level.
 - Switch off power supply before installing.
 - Keep more than 30cm away from AC power supply to avoid external interference.
 - Keep it away from the water and magnetic field.

You will need

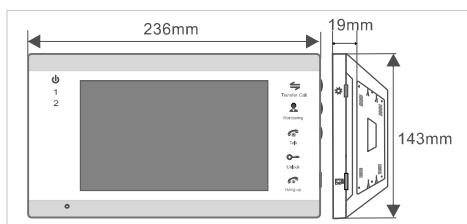


To install the indoor monitor, please follow these steps as below:

Surface mount



1.5 Specifications



Display	7 inch TFT LCD
Resolution	800(H)X480(V)
Video system	PAL/NTSC compatible
Intercom mode	Semi-Duplex communication
Conversation duration	120 seconds
Standby status	300mA max.
working status	650mA max.
Power supply (optional)	DC 12V
	Built-in power supply(AC100V~240V)
Operation temp.	-10~+60°C
Installation	Surface mount
Dimensions	236*143*19mm

1.6 Description On Indoor Monitor



NO.	Name	Descriptions
1	Power LED	The power indicator of the indoor monitor, and the indicator will be flashing in AP mode.
2	The door 1 LED	The light is on when the door 1 works.
3	The door 2 LED	The light is on when the door 2 works.
4	TFT display	View visitor's image displayed on the TFT screen with visual indoor monitor.
5	Microphone	Transmit the voice to outdoor camera.
6	Transfer call	1. Transfer call, press the button to transfer calls to another indoor monitor. 2. Intercom call, in standby mode, press this button to intercom call to other indoor monitors.
7	Monitoring	Watch the images of outdoor bells and CCTV cameras.
8	Talk	1. Activate conversation mode by pressing this button. 2. In standby mode, press and hold the button for about 5 seconds until hearing a beep sound, it will automatically reboot and wait for Power LED flashing then AP mode is ready.
9	Unlock	Release the door lock by pressing this button.
10	Hang up	1. End conversation mode by pressing this button and the indoor monitor will go into standby mode. 2. In standby mode, press and hold this button for about five seconds until hearing a beep sound, it will automatically reboot and restore all the parameters to the default settings except IP address.
11	Setup	1. This button can be pressed, scrolled upwards or downwards. 2. When the LCD screen is highlighted, make adjustments to the brightness, contrast and color of the LCD screen, and adjust volume for the indoor monitor during intercom, Press this button to bring up the option "Brightness", "Contrast", "Color" and "Volume", scroll the button upwards or downwards to adjust the values. The values of the brightness, contrast and color are all set at from 0 to 60. The volume can be set at from 1 to 4. 3. In standby mode, press this button to bring up some menus shown as follows.
12	Speaker	Sound from outdoor camera.
13	TF card slot	TF card interface, support up to 64GB card for recording. The file system of the card must be FAT32 to video storage. And suggest that it's better to use a TF card more than class 10 onto the device.

✳ Setup

In standby mode, press the button “✳” to access the setting menu interface, shows the menu interface as below. On menu settings, scroll the button “✳” to move the cursor, then press the button “✳” again to select menu options, and scroll the button “✳” to adjust values of each option, then press “✳” to confirm. When select option “Exit” on main menu, press the button “✳” to exit menu interface, and the indoor unit will be into standby mode.

English	
Ringtone	05
Ringtone volume	07
Duration of the ringtone	24
Unlock time	10
CAM1	Enable
CAM2	Enable
Exit	

[English]: To set up the language displayed on the indoor monitor.

[Ringtone]: To set up the doorbell tone of outdoor cameras, a total of 16.

[Ringtone volume]: To set up the ring volume. Users can set up different ring volume when calling. The volume level of ring can be set up from 01 to 08.

[Duration of the ringtone]: To set up the ring time when calling, the value can be set up from 5s to 30s.

[Unlock time]: From this field, user can adjust unlock time for visitor calling, and values can be set from 1s to 10s. For example, to select 5s, when visitor calling on the outdoor camera, if the master release the door lock, visitor can go to the indoor unit within 5s, otherwise the door lock will be switched off automatically after 5s.

[CAM1]: Enable or disable the preview of camera 1.

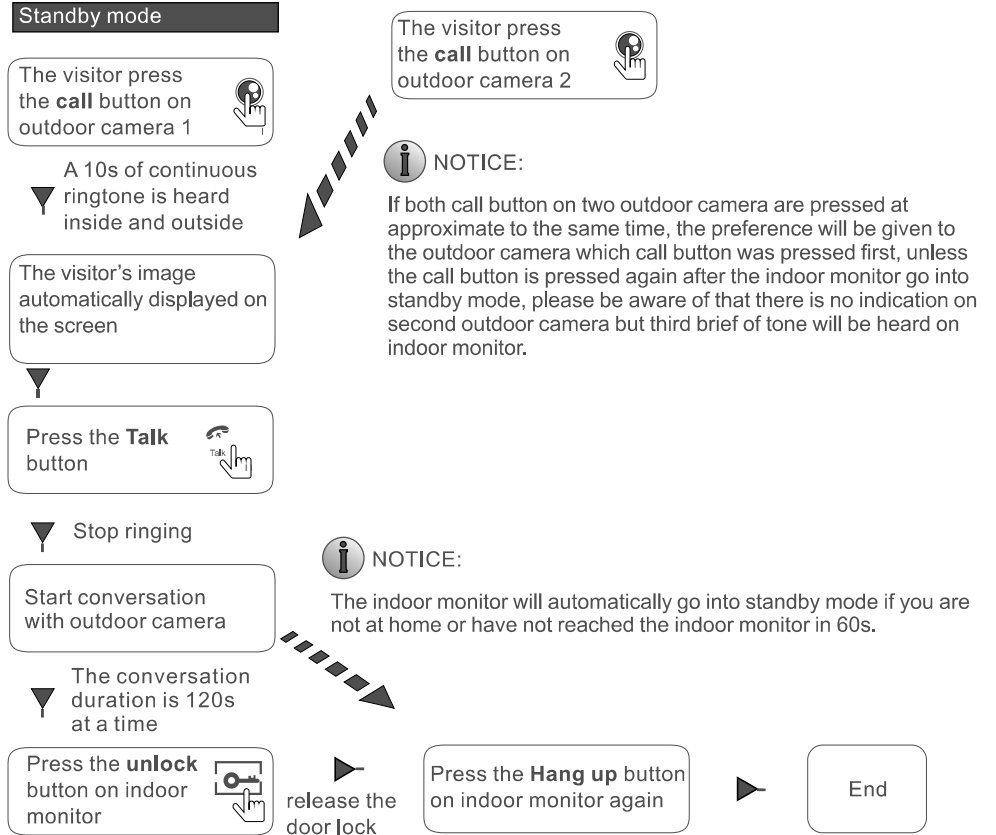
[CAM2]: Enable or disable the preview of camera 2.

[Exit]: Exit the current menu.

1.7 Operation Introduction On Indoor Monitor

◆ VISITOR CALL

* Please be aware of Connection of 2 outdoor cameras is required.



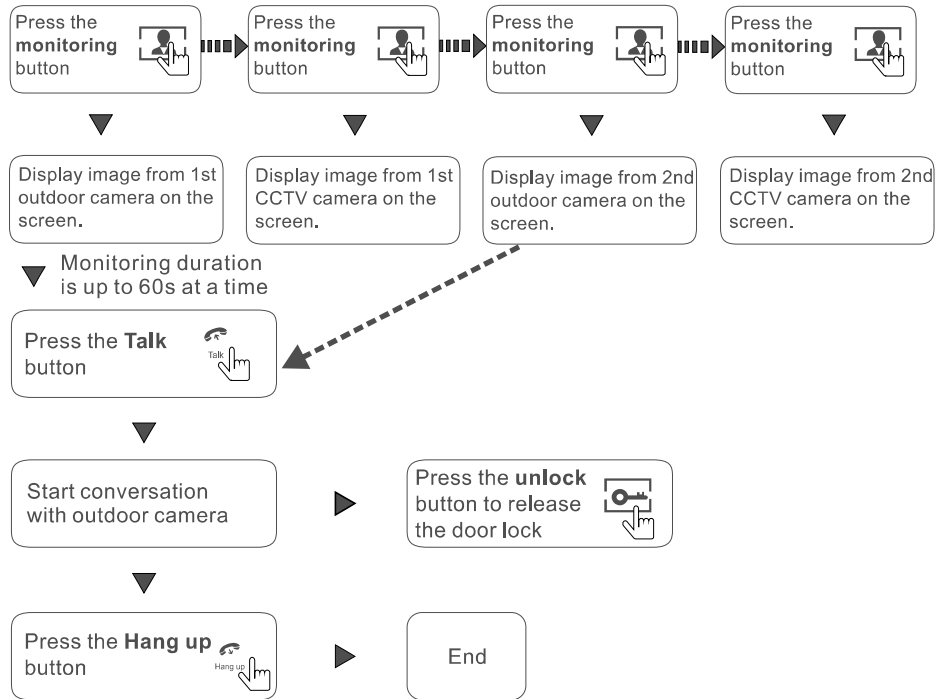
NOTICE: Both the visitor's voice and image will be not switched off within 20s of time span when the unlock button is pressed, this individualized function allow you to make sure whether the visitor already come in.

NOTICE: For the models with SD card, if the SD card has been inserted into the indoor monitor, when visitor press the Call button on outdoor camera, if the record mode set up as "Record", the device will start recording, and the recording will continue to be a few seconds; if the record mode set up as "Snapshot", the first picture will be captured.

◆ MONITORING On Indoor Monitor

* Please be aware of Connection of 2 outdoor cameras and 2 CCTV cameras to 1 indoor monitor is required for dual entrance monitoring at least.

Standby mode

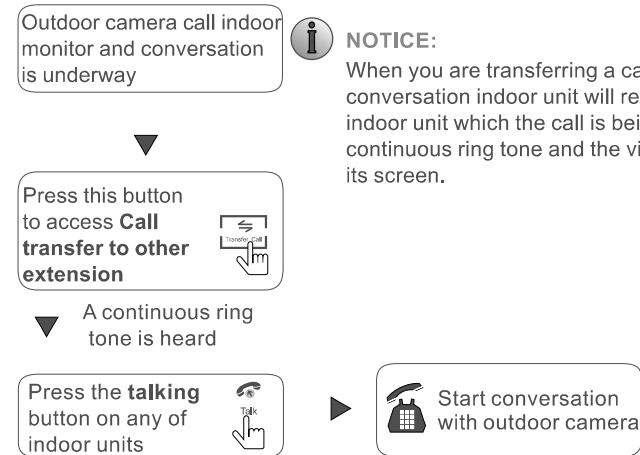


NOTICE:

- If you are using only one outdoor camera in **monitoring** mode, you can also end the **monitoring** mode by pressing the **hang up** button.
- Please note that if you are using two outdoor cameras, but it appears a blank display when you are activating the monitoring mode on either of indoor units, to completely solve this accident, please pull out all power supply of indoor unit and then plug in power supply back after 10s later.
- For the indoor monitor, you can view the image of the outdoor camera via web browser on PC or a smart-phone/Pad with an app "uCareHome".
- If the indoor monitor is underway in monitoring mode, during this time a visitor press the call button on either of outdoor unit, the monitoring mode will be switched off. The just visitor's image will appear on its screen and continuous ringing will be heard. You can press the talk button to reactivate conversation with the visitor; for more detailed operations, please refer to VISITOR CALL on page 10.
- If a conversation with an outdoor camera is underway, during this time a visitor press the call button on another outdoor camera, the call alarm notification will be pushed onto user's phone.

◆ CALL TRANSFER TO OTHER EXTENSION

* At least 2 indoor units is required



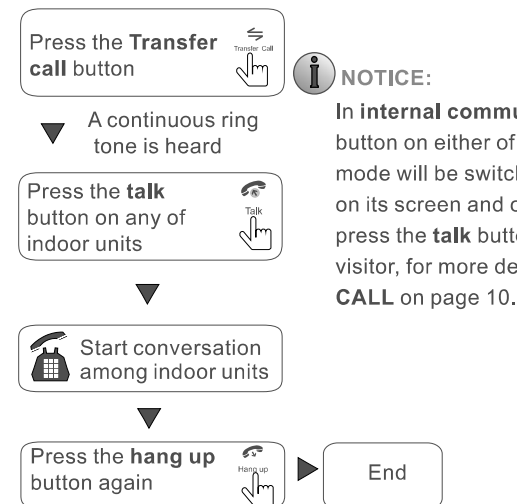
NOTICE:

To release door lock, end conversation, please refer to page 10 as reference.

◆ INTERNAL COMMUNICATION AMONG INDOOR UNIT

* At least 2 indoor units is required

Standby mode



NOTICE:

In **internal communication** mode, if a visitor press the call button on either of outdoor unit, the **internal communication** mode will be switched off, the just visitor's image will appear on its screen and continuous ringing will be heard, you can press the **talk** button to reactivate conversation with the visitor, for more detailed operations, please refer to **VISITOR CALL** on page 10.

2. System Settings For Indoor Monitor

Note: 1. No menus on the indoor monitor can be operated, so users should set up parameters for the indoor monitor via Web browser or the uCareHome app.

2. User can connect the device through web browser or mobile phone/tablet, and if the device is connected via web browser or mobile phone/tablet, the device won't be into standby mode unless the web browser and mobile phone/tablet are both logout or press the "hang up" button on the indoor monitor.

2.1 Device Connect--Through wired network or wireless network

A. User can connect the indoor monitor through network cable, operation steps:

1. Connect a network conversion with 4 pin interface to J11 on the indoor monitor, and connect the keystone jack of network to the end of the 4 pin interface.
2. Connect the outdoor camera(s) and CCTV camera(s) to the indoor monitor through 4 pin line(s), and the CCTV cameras must use external power switching.
3. Connect the power adapter to the electrical outlet of the indoor monitor and power on.
4. Wait for a while until hearing a beep sound, then the indoor monitor starts completely.

Network connection diagram through wired network of Figure 1 as an example.

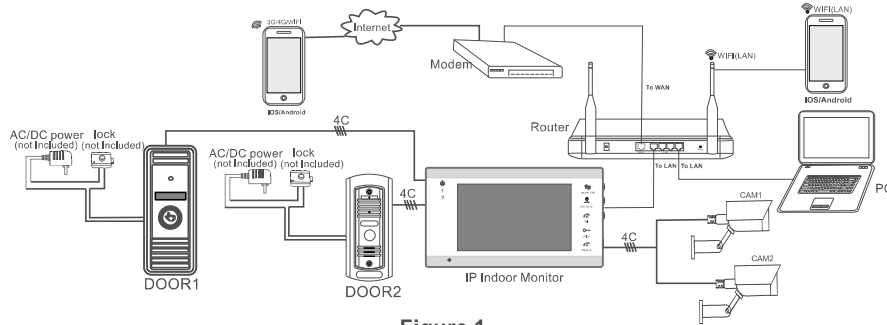


Figure 1

B. The indoor device with WIFI function can also work in WIFI wireless network.

1. If user connects a network cable to the indoor device, the parameters for WIFI can be set up via IE browser, please see section 5.3.4 Network--WIFI for more information, network connection diagram please refer to Figure 1 on the above.
2. If user doesn't want to connect a wired cable to the indoor monitor, and user needs to prepare a wireless router and a smart-phone or a pad with IOS or Android system. The parameters for WIFI can be set up via a smart-phone or a pad with IOS or Android system, please see section 2.2 AP Mode for more information.

Network connection diagram via wireless network as Figure 2 as an example.

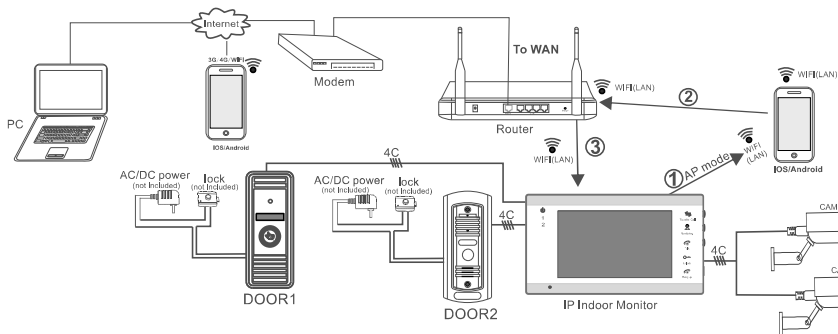
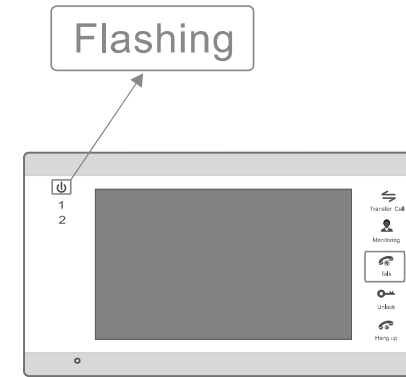


Figure 2

2.2 AP Mode

Into AP mode by manual

Then make the indoor monitor into standby mode, press and hold the "talk" button for about 5 seconds until you hear a beep sound, it will automatically reboot and wait for Power LED flashing then AP mode is ready.



Note:

If the device has went into AP mode, but the wireless function of the device hasn't been activation via "uCareHome" on the phone or user doesn't do any operate about the device, after 10 minutes the device will automatically exit AP mode and returns to the previous connection mode.

3. Web Browser Operation

3.1 Running Environment

Install the software through the Internet browser of OS to conveniently operate the network from a remote location. This device supports C/S, B/S, and access in LAN and WAN. It also supports IP and domain name visiting.

IMPORTANT! SOFTWARE RECOMMENDATIONS:

To ensure reliable remote viewing of IPdoor footage, it is highly recommended that users have either Windows XP, Windows 7 or Windows 8 installed on their computers, and that they use either Internet Explorer 6.0, Internet Explorer 7.0, Internet Explorer 8.0, Internet Explorer 9.0 Internet Explorer 10.0, Internet Explorer 11.0, Mozilla Firefox, or Google Chrome as their Internet browser. (In the appendix, there is an explanation of how to access the indoor unit using Firefox or Google Chrome.)

Note:

1. Suggested that to run Internet Explorer browser as Administrator on operation system such as Windows 7/Windows 8/Windows 8.1/Windows 10 except Window XP.
2. Before setting up remote access, turn Disable the firewall and any anti-virus software currently running on the computer.

3.2 Quick Setting

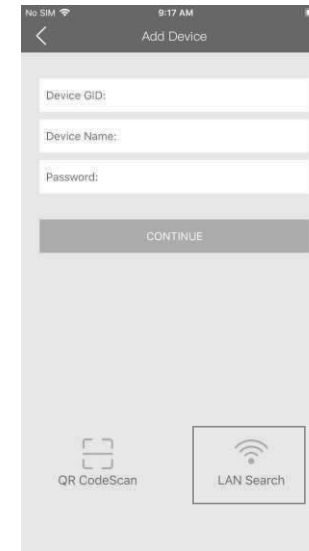
- 1) Through the indoor unit connection to network (or PC), and then to the indoor unit electric start.

Note: The default IP type of the indoor monitor is DHCP, for the first time PC and the device must be connected to the same router.

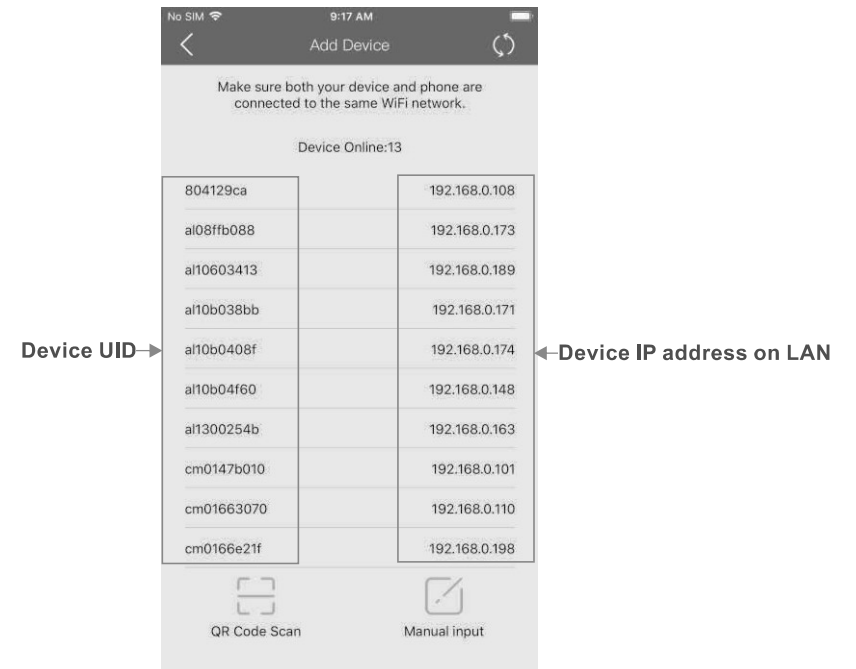
- 2) Login the app “uCareHome”, make sure that your smart-phone and the device are connected to the same WIFI network, press “Door Intercom Monitor”-> “Connect New Device” -> “Existing”, and press “Confirm”.



Press “LAN Search”:



Online devices which are connected to the same WiFi router will be shown on the list(as below):



User can access to the indoor monitor by this device IP address on LAN on PC.

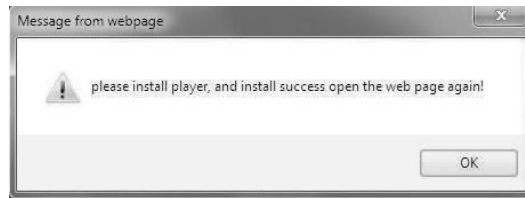
3.3 System Login

1) Open the web browser, and enter IP address “<http://XXX.XXX.XXX.XXX>” which can be searched by the app “uCareHome”.

Note: If the device is connected to the WAN, the IP address should be a public IP address.
The system will automatically enter the GUI as follows.



2) Click “Login”, if users access the device on the PC for the first time, it will pop up a window as below, click “ok” and install player on the PC according to the following method.



Click “Download Player” and download the file “IPDoor.zip” to the PC. Open the zip file to run the file “IPDoorSetup.exe” and it will install indoor unit’s OXC on the PC (according to the method as following figures).



3) After installing player on the PC, input the authorized user name and password, the default user name is “Admin” and the default password is “888888”. Select language, choose network stream “Main Flow” or “Minor Flow”, choose door number or camera number (Door1, Door2, Cam1 or Cam2), and then click “Login” to access.

“ Auto Login” indicates that it will enter into “Home” interface automatically when the device will be connected to the web browser again on the same PC.



4) After login, it will enter into “Home” interface of the live view as follows.



4. Port Forwarding

If visit indoor unit via Internet Explorer browser from WAN, you must do port forwarding on the router. Port Forwarding is used to transfer information from your router directly to your computer or indoor unit through Ports. What is a Port? Ports are openings through your computer that allow data in you computer/indoor unit. The World Wide Web for example uses Port 80. Anytime you go to a website, that goes over that specific port. The reason we need to forward certain ports for your indoor unit is so that you can View your cameras over the Web (internet). Take Netgear router for example.

A few things that you need to find out about your Internet Connection:

- * Do you have a Static IP or Dynamic IP? To find this out, contact your Internet Service Provider and they should be able to tell you.
- * If you have a Dynamic IP or PPPoE ADSL, you will need to set up an Account on DDNS (www.dyndns.org or www.3322.org). That way when your IP changes, you can connect to the same Hostname (ex: my.dyndns.org) everytime you connect. In other words, it makes your Dynamic IP a static host address. This is very important if you want to connect to your indoor unit remotely.
- * Find out what equipment you are using from the Internet Service Provider. If it is a modem, then you should be fine just configuring your router that's connected to it. Make sure to get the username and passwords for any router you may have. If you can not log in to the router, you will not be able to complete this setup. You may have to contact your Internet Service Provider for this information.

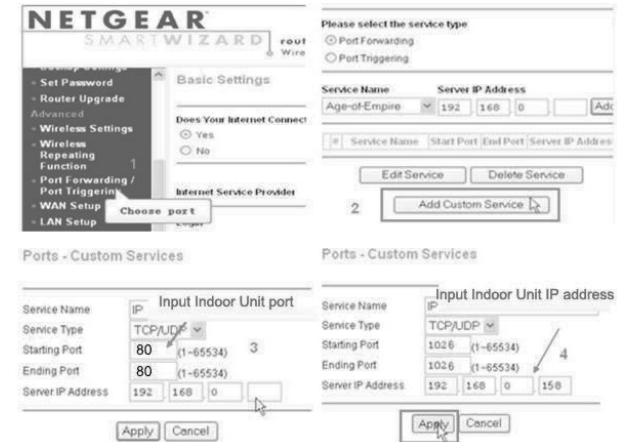
Take Netgear router for example.

Operation Steps:

- 1) After login the interface of the router, choose “Port Forwarding”;
- 2) Choose “Add custom Service”;
- 3) Input indoor unit ports, including http port(default as 80) and mobile port(default as 20510);
- 4) Input IP address of the indoor unit, click “Apply” (the HTTP port, the mobile port and IP address should be the same as the following figure which set by your own).

Note: Different router has different settings for port forwarding; please kindly follow your router guide to do the port-forwarding.

After the port-forwarding is done, you could view the indoor unit from WAN now.



5. Function Settings

Options in the main interface include “Home”, “Media”, “Parameters” and “System”. Click any option to access it.

5.1 Home

Click “Home” to enter the window for live video as follows, it includes video window, control buttons and Image Settings.

Video window: Double click the real-time video then it will display video full-screen. Double click it again then it will recovery default window.

Control buttons:

Record: Click “Record” button, which could record the video with audio and store it at the present path. When recording, the button “Record” will change to “Stop”. Click the button “Stop” again, and then the record stops.

Capture: Click the capture button, which could take photos for the current video and store the image at the present path.

Unlock: Click “Unlock” button to release the door lock via IE browser. Click this button it will pop-up a window as below, and please fill in correct password, the password is the same as the password for accessing the device system, the default password is “888888”, then click “OK” to confirm.



Image Settings:

Hue: Adjust hue of image. Values can be set from 0~100. By default, the value is set at 50.