



# OPERATION INSTRUCTION

4-Wire IP 7 Inch Video Door Phone

User Manual

If you have any problem during the installation or the usage, please send email to our support team, we will help you solve the problem ASAP.

Support email: [support@tmezon.com](mailto:support@tmezon.com)

Official Website: <http://www.tmezon.com>

Manufacturer: Zhuhai Tmezon Technology Co., Limited

Address: No.6.Pingbei 2nd.Rd, NANPING Technology Area,  
Zhuhai City, Guangdong, China



TuyaSmart

## LIMITATION OF LIABILITY

- ※ This users' manual is supplied 'as is', with no warranties, be it expressed or implied, including, but not limited to, the implied warranties of merchantability, suitability for any exact purpose, or non-infringement of any third party's rights.
- ※ This publication may include technical inaccuracies or typos. The manufacturer holds the right to introduce any changes to the information contained herein, for any purpose, including but not limited to, improvements of the publications and/or related to the product, at any time, without prior notice.

## DISCLAIMER OF WARRANTY

The supplier shall not be liable to any party or any person, except for replacement or reasonable maintenance of this product, for the cases, included but not limited to the following:

- ※ Any damage or loss, including but not limited to: direct/indirect, consequential, special, exemplary, arising out of or related to the product;
- ※ Inappropriate use or negligence of the user in operation of the product, resulting in personal injury or any damage;
- ※ Unauthorized disassembly, repair or modification of the product by the user;
- ※ Any problems or consequential inconvenience, loss or damage, caused by connecting this product to devices of the third parties;
- ※ Any claim or action for damages, brought by any photogenic subject, be it a person or organization, due to violation of privacy whereby the pictures taken by the device and/or saved data become public or are used for the purposes other than intended.

## SAFETY INSTRUCTIONS

- ※ Read these instructions and keep them in a safe place for future reference.
- ※ Please refer all work related to the installation of this product to qualified service personnel or system technician.
- ※ Do not operate the appliance beyond its specified temperature, humidity or power source ratings.
- ※ Securely install the devices on vertical surfaces (solid walls/doors) not prone to vibration or impact.
- ※ Install the devices away from heat sources such as radiators, heat registers and stoves.
- ※ Installation of the terminal near consumer electronics devices, e.g. stereo receiver/amplifiers and televisions, is permitted as long as the air surrounding the terminal does not exceed the above mentioned temperature range.
- ※ Handle the appliance with care. Do not strike or shake, as this may damage the device. The doorbell/camera units should be fitted with an approved weather shield if the chosen position is in direct sunlight, or in contact with rain, snow or irrigation sprinkler systems.
- ※ Do not use strong or abrasive detergents when cleaning the appliance body. When the dirt is hard to remove, use a mild detergent and wipe gently.
- ※ Do not overload outlets and extension cords as this may result in a risk of fire or electric shock. Distributing, copying, disassembling, reverse compiling, reverse engineering, and also exporting in violation of export laws of the software provided with this product, is expressly prohibited.

## CARING FOR THE ENVIRONMENT BY RECYCLING



When you see this symbol on a product, do not dispose of the product with residential or commercial waste.

### Recycling your electrical equipment

Please do not dispose of this product with your residential or commercial waste. Some countries or regions, such as the European Union, have set up systems to collect and recycle electrical and electronic waste items. Contact your local authorities for information about practices established for your region.

## COPYRIGHT STATEMENT

All rights reserved. No part of this publication may be reproduced in any form or by any means, transcribed, translated into any language or computer language, transformed in any other way, stored in a retrieval system, or transmitted in any form or by any means, electronic, mechanical, recording, photocopying or otherwise, without the prior written permission of the owner.

## FCC STATEMENT

This device complies with Part 15 of the FCC Rules. Operation is subject to the following two conditions: (1) this device may not cause harmful interference, and (2) this device must accept any interference received, including interference that may cause undesired operation.

Changes or modifications not expressly approved by the party responsible for compliance could void the user's authority to operate the equipment.

NOTE: This equipment has been tested and found to comply with the limits for a Class B digital device, pursuant to Part 15 of the FCC Rules. These limits are designed to provide reasonable protection against harmful interference in a residential installation. This equipment generates uses and can radiate radio frequency energy and, if not installed and used in accordance with the instructions, may cause harmful interference to radio communications. However, there is no guarantee that interference will not occur in a particular installation. If this equipment does cause harmful interference to radio or television reception, which can be determined by turning the equipment off and on, the user is encouraged to try to correct the interference by one or more of the following measures:

--Reorient or relocate the receiving antenna.

--Increase the separation between the equipment and receiver.

--Connect the equipment into an outlet on a circuit different

from that to which the receiver is connected.

--Consult the dealer or an experienced radio/TV technician for help.

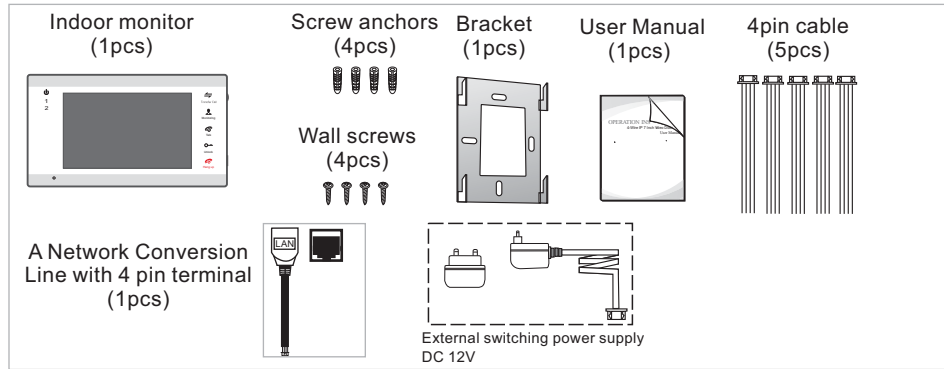
NOTE: This device and its antenna(s) must not be co-located or operation in conjunction with any other antenna or transmitter.

## RF Exposure STATEMENT

To maintain compliance with FCC's RF Exposure guidelines, This equipment should be installed and operated with minimum distance of 20cm the radiator your body. This device and its antenna(s) must not be co-located or operation in conjunction with any other antenna or transmitter.

# 1. Description Of The Indoor Monitor

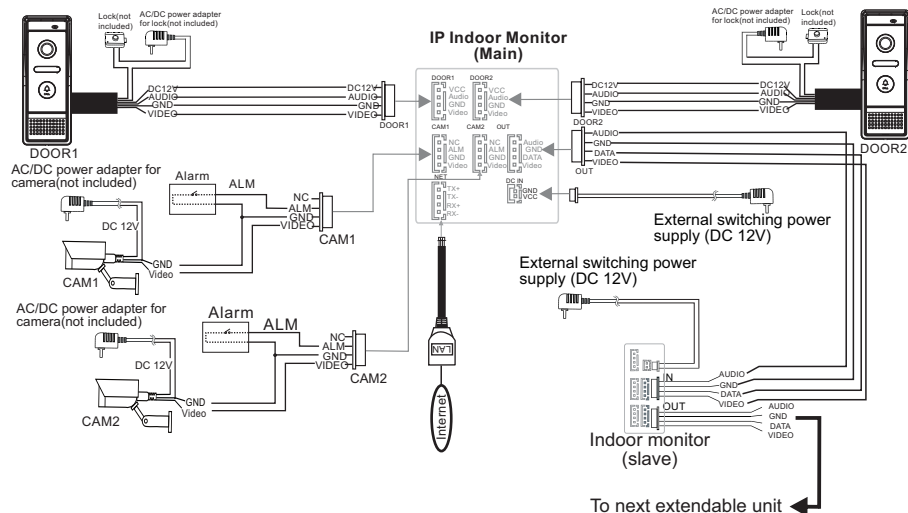
## 1.1 Fittings



## 1.2 Wiring Diagram

Users can connect up to two AHD(720P/1080P) / TVI / CVI / CVBS definition outdoor doorbells& two AHD(720P/1080P) / TVI / CVI / CVBS definition analog cameras simultaneously, and two extension indoor monitors one by one to the corresponding interfaces by their own's requirement according to the following wiring diagram. The power supply is an external switching power supply. The ethernet connector is a 4 pin connector, user needs to connect a network conversion with 4 pin terminal to it (shown as below for example).

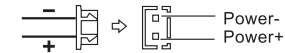
- Note:**
1. The CCTV camera must use an external power supply.
  2. AHD/TVI/CVI/CVBS definition cameras can be mixed connected.
  3. When mixed-resolution cameras are connected to the main monitor, suggest that the connected slave monitor is AHD(720P or 1080P). If the CVBS slave monitor is connected, you can only view the image of the CVBS camera on the slave.
  4. All the cameras must be connected to the monitor before powering on the monitor.



## 1.3 Note On Wiring Connection

- i** The power supplies for electric lock, CCTV cameras and extension cables are not included in the package, user can purchase according to actual requirement.
- i** In the standard delivery the system supports locks with Normally Open (N.O.) door unlocking method. It means that in the normal state the dry contact is opened so the lock is kept under constant closed state. If the unlocking push-button is pressed and the dry contact is changed to closed, then the lock is released.

**!** Please check that the socket of power supply(silk printing J01) is correct if you connect the external switching power supply, otherwise it will damage the device. Please first pull out the DC power plug before installation of device(Shown as below).



- i** Wiring connection according to the following to avoid interference:

### A. Wiring connection between outdoor bell and IP indoor monitor.



### B. Wiring connection between indoor monitors.



- i** Please note the silk printing marked on PCB in order to avoid incorrect connecting. The wiring connection requirement(**The actual effect and the quality of wire rod has the very big relations**):

1. 4-Core ordinary unshielded and shielded wiring cable;
2. Effective distance from the outdoor camera to furthest indoor monitor:
  - Transmission  $\leq 30m$  ( $4 \times 0.4mm^2$ )
  - Transmission  $\leq 50m$  ( $4 \times 0.65mm^2$ )

### Unshielded wiring cable:



3. If you want to extend the distance over 50m, you'd better to choose a thick copper core cable, or a shielded wiring cable( $75-4+2 \times 0.5mm^2$  shielded coaxial wiring cable), or a 3-core ordinary unshielded wire + a 75-3 video wire.

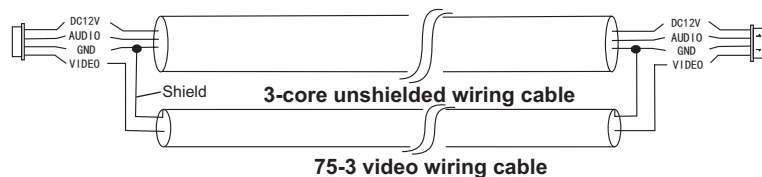
### 75-4+2\*0.5mm<sup>2</sup> shielded coaxial wiring cable:

Connect the shielded wiring cable to GND, connect the coaxial wiring cable to Video, connect the other two wiring cable to Audio and VCC;



### 3-core unshielded wiring cable+75-3 video wiring cable:

Connect the shield of the 75-3 video wiring cable with the GND of the 3-core unshielded wiring cable.



4. If user wants to use CAT5 or CAT6 network cable, effective distance from the outdoor camera to the furthest indoor monitor will be limited. **For unshielded network cable, the distance will be up to 20m. For shielded network cable, the distance will be up to 40m. So CAT5 or CAT6 network cable is not recommended.**

CAT5 or CAT6 network cable consists of 4 pairs of twisted pairs(8 wires), here one pair of twisted pair will be used as one cable.

Green&White+Green, Brown&White+Brown, Orange&White+Orange, Blue&White+Blue.

#### Unshielded network cable:



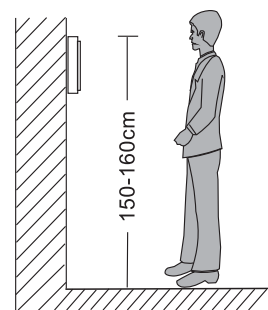
#### Shielded network cable:

Connect the shield of the network cable with the GND.



**i** When the distance from the outdoor doorbell to the indoor monitor is too far, maybe over 50m or 60m, please make sure that the input voltage to the outdoor doorbell must reach 11v.

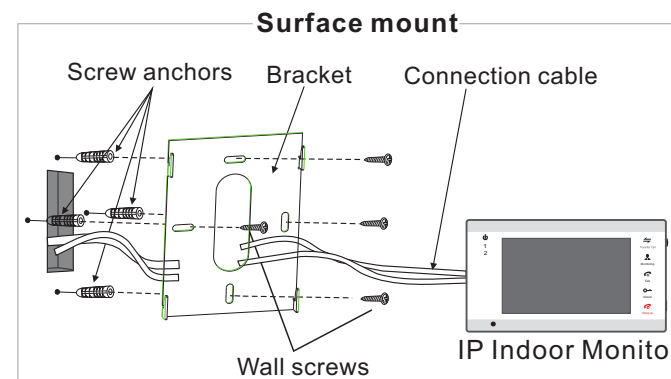
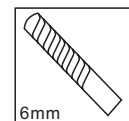
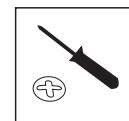
## 1.4 Install The Indoor Unit



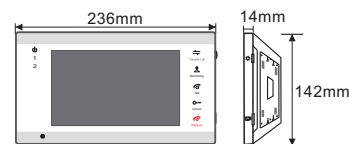
**Note:**

- \* Please be far from the devices with intense radiation: TV, DVR, etc.
- \* Do not disassemble privately to avoid the electric shock.
- \* Do not drop, shake or knock the device, otherwise will damage the elements.
- \* Choose the best position to install.
- \* Please power off before installation.
- \* Keep at a distance of more than 30cm with AC power to avoid interference.
- \* Keep away from the water, magnetic field and chemicals.

**You will need** To install the indoor monitor, please follow these steps as below:

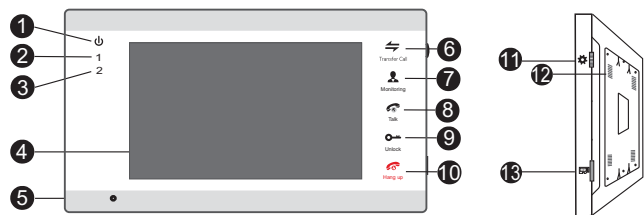


## 1.5 Specification



Display	7 inch TFT LCD
Resolution	1024(H)X600(V)
Video system	PAL/NTSC compatible
Intercom mode	Semi-Duplex communication
Conversation duration	120 seconds
Standby status	420mA max.
Working status	900mA max.
Additional memory	Support additional TF card(256GB max.)
Power supply	External switching power supply DC 12V
Operation temp.	-10~+60°C
Installation	Surface mount
Dimensions	236*142*14mm

## 1.6 Description On Indoor Unit



NO.	Name	Descriptions
1		Power LED, the power indicator of the indoor monitor.
2	1	The door 1 state lights, to door 1 working when the LED is on.
3	2	The door 2 state lights, to door 2 working when the LED is on.
4	TFT display	View visitor's image or menu interface displayed on the TFT screen.
5	Microphone	Transmit the voice to outdoor camera.
6		1. Transfer call, during conversation mode press this button to transfer calls to another indoor monitor. 2. Internal communication, in standby mode, press the button to activate internal communication with the other indoor monitor.
7		1. Monitor, watch the door and camera images. 2. In file list interface, press this button to page up.
8		1. Talk, press this button to activate conversation mode. 2. In file list interface, press this button to page down.
9		Unlock, release the door lock.
10		1. Hang up, during conversation press this button to end conversation mode. 2. Return, on menu interface press this button to return to the previous.
11		1. In standby mode, press the button “” once to access the main menu. 2. On the menu interface, scroll the button “” up or down to move the cursor. 3. On menu settings, after choosing sub-menu setting, press the button “” to enter sub-menu interface . 4. When setup menu, press this button to enter edit mode, scroll this button “” up or down to modify parameters, then press this button to confirm.
12	Speaker	Sound from outdoor camera.
13	TF card slot	Insert a TF card to store video records, audio records and photographs, supports up to 256GB. All the recordings and photographs are stored in the TF card of the monitor. If the TF card capacity is less than 64GB, the file system format of the TF card must be Fat32. If the TF capacity is greater than or equal to 64GB, the file system format must be exFat. And it is recommended to use a TF card with a writing speed greater than Class 10 on the device.

### Note:

The back-light of each button will be on when user presses any button or some visitor calls on the outdoor bell. If the indoor monitor is in standby mode, all button's back-lights will be off in 10 seconds.

## 1.7 Operation Introduction on Indoor Monitor

### ◆ VISITOR CALL

#### Standby mode

The Visitor press the **call** button on outdoor camera 1

The Visitor press the **call** button on outdoor camera 2

A continuous ring tone is heard inside and outside



**NOTICE:**

The visitor's image automatically displayed on the screen

If both call button on two outdoor camera are pressed at approximate to the same time, the preference will be given to the outdoor camera which call button was pressed first, unless the call button is pressed again after the indoor monitor go into standby mode, please be aware of that there is no indication on second outdoor camera.

Press the **talk** button on indoor monitor

Stop ringing

**NOTICE:**

Start conversation with outdoor camera

The indoor unit will automatically go into standby mode if you are not at home or have not reached the indoor unit in 60s.

The conversation duration is 120s at a time



Press the **unlock** button on indoor monitor

release the door lock

Press the “” button on indoor monitor.

End

**i** Both the visitor's voice and image will not be switched off within 20s of time span when the **unlock** button is pressed, this individualized function allow you to make sure whether the visitor already come in.

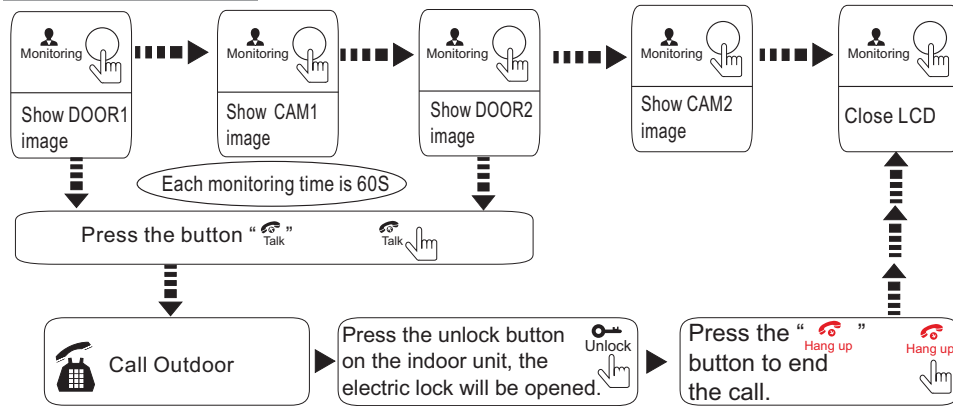
**i** When the indoor monitor detects the TF card, if the menu “Setting->Door setting->Door1/Door2->Record mode” is set to “Video”, it will start recording from the call. If the menu “Setting->Door setting->Door1/Door2->Record mode” is set to “Snapshot”, when the visitor presses the call button on the outdoor camera, the first photo will be taken.

**i** In the monitoring mode, you can press the button “” to conversation and press the button “” to unlock.

## Monitoring On Indoor Monitor

Please be aware of Connection of 2 outdoor cameras and 2 CCTV cameras to 1 indoor monitor is required for dual entrance monitoring at least.

### Standby Mode

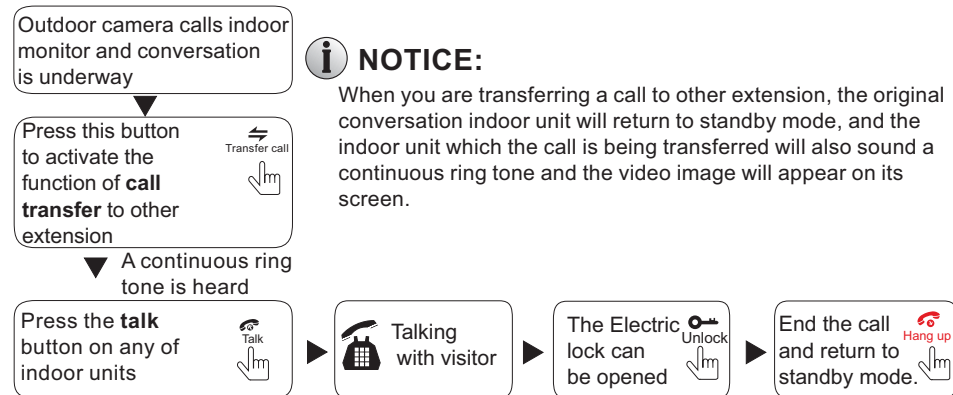


### NOTICE:

- If you are using only one outdoor camera in monitoring mode, you can also end the monitoring mode by pressing the monitoring button again (Must be Close CAM1; DOOR2; CAM2 in the menu option).
- If you use two indoor units, you can also simultaneously in other indoor unit starts monitoring mode, the same images are displayed on the screen of the different indoor unit.
- If the indoor unit is underway in monitoring mode, during this time a visitor press the call button on either of outdoor unit, the monitoring mode will be switched off, the just visitor's image will appear on its screen and continuous ringing will be heard. If you are using the indoor unit with hands-free, you can press the talk button to reactivate conversation with the visitor.
- If a conversation with an outdoor camera is underway in monitoring mode, during this period, the visitor presses the call button on another outdoor camera, the message "Door calling" will be displayed on the screen.

## Call Transfer To Other Extension

Internal communication function requires at least two indoor monitors and one outdoor doorbell to be connected.



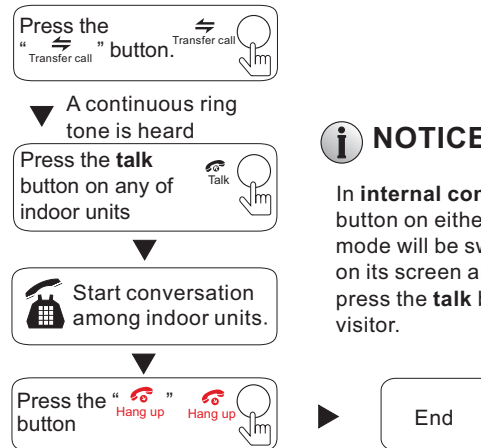
### NOTICE:

When you are transferring a call to other extension, the original conversation indoor unit will return to standby mode, and the indoor unit which the call is being transferred will also sound a continuous ring tone and the video image will appear on its screen.

## Internal Communication Among indoor monitors

At least 2 indoor units is required.

### Standby Mode



### NOTICE:

In **internal communication** mode, if a visitor press the call button on either of outdoor unit, the **internal communication** mode will be switched off. The just visitor's image will appear on its screen and continuous ringing will be heard, you can press the **talk** button to reactivate conversation with the visitor.

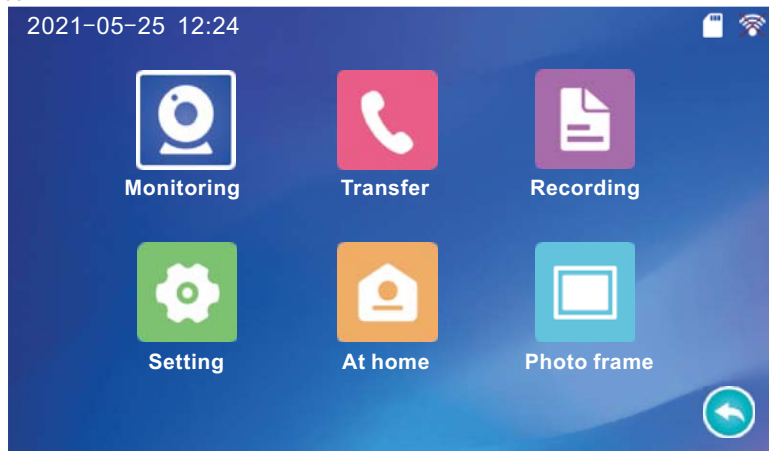
## 2. Set System Parameters On Indoor Monitor

Attention before using:

1. This indoor monitor displays the OSD menu on its own screen, and the user can set all the parameters on the indoor monitor.
2. The user can use the "Tuya Smart" application to connect to the indoor monitor via android system or IOS system mobile phone/tablet.
3. The motion detection function only supports one channel, which means that when the motion detection function of door 1 is activated, the motion detection function of the other channel cannot be activated at the same time. User can set up the motion detection parameters on the indoor monitor menu.
4. User can insert a TF card to store video records, audio records and photographs, supports up to 256GB. All the recordings and photographs are be stored in the TF card of the monitor. If the TF card capacity is less than 64GB, the file system format of the TF card must be Fat32, and the user can format the TF card on the monitor before use. If the TF capacity is greater than or equal to 64GB, the file system format must be exFat, and the user must format the TF card on the computer before using. And it is recommended to use a TF card with a writing speed greater than Class 10 on the device.
5. When the indoor monitor is ready in AP mode, the WIFI hotspot of the monitor can be searched in the WIFI list of the mobile phone.
6. If the user doesn't perform any operate or enter any interface of the indoor monitor, the indoor monitor will automatically enter standby mode after 1 minute .
7. During the editing of most parameters on the monitor, the white characters indicate that the option is in the editing state. When setting the system date and time and ring schedule time period, red characters indicate that the option is in edit mode.
8. After modifying the parameters, the settings will be saved when the monitor is in standby mode.

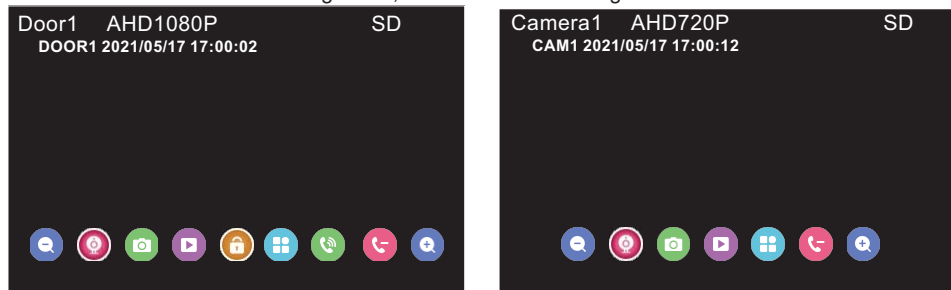


In standby mode, press the button “⚙️” to access the main menu interface, shows the main interface as shown below. On menu settings, scroll the button “⚙️” up or down to move the cursor to select sub-menu, the selected icon frame will be white, then press the button “⚙️” again to enter sub-menu interface. On sub-menu settings, press “⚙️” to select menu options, and press “📞” to exit current menu interface.



## 2.1 Outdoor bell and Camera monitoring

In standby mode, press “👤” to switch the surveillance image between the outdoor bells and the CCTV cameras. On the monitoring mode, device shows following interface.



On monitoring mode, to set up below Setting. Scroll the button “⚙️” up or down to move the cursor, and press the button “⚙️” to confirm.

- [ 🗨️ ] Zoom out.
- [ 📺 ] Monitor, use this item to switch the monitor image to other channels.
- [ 📷 ] Capture, use this item to capture a frame of the current video stream as a still photo.
- [ 📽 ] Record, use this item to start manual record, and press it again to stop manual record.
- [ 🚪 ] Unlock, use this item to release the door lock connected to the outdoor bell.
- [ 🗣️ ] Indoor monitor call volume setting, when the monitor and outdoor dell are in intercom state, use this item to adjust the volume of the indoor monitor. Color setting, to setup the image brightness, contrast and saturation, the value can be set up between 0 and 50.
- [ 🗣️ ] Talk, use this item to activate conversation mode.
- [ 📞 ] Hang up. In conversation mode, use this item to end conversation.
- [ 🔍 ] Zoom in.

## 2.2 Set System Parameters

On main menu move the cursor to “Setting” option, and press “⚙️” to enter the “Setting” menu. Menu setup includes: System Setting, Door setting, Camera setting, Network setting, Senior setting and Information. Press “⚙️” to confirm, press “📞” to return to previous.

### 2.2.1 Setting-System setting

On System setting menu, to set up Time, Date format, Standby clock, Language, Keytone, Weather, Key backlight, Door panel backlight, and Standby display.

System setting	
Device_id	1
Time	2021-05-18 06:45 ⚙️
Date format	YY-MM-DD
Standby clock	On
Language	English
Keytone	On
Weather	On
Key backlight	On
Door panel backlight	On
Standby display	On

**[Time]:** Use this field to set up system date and time.

**[Date format]:** Use this field to set up system date to be YY-MM-DD or DD-MM-YY or MM-DD-YY.

**[Standby clock]:** Enable or disable the standby clock function. The standby clock is used together with the standby display, and only when both are turned on at the same time, the screen saver clock will always be displayed in standby. When “**Standby Clock**” is set to “**Off**”, the screen will always be black in standby. When “**Standby clock**” is set to “**On**”, and “**Standby display**” is set to “**off**”, the system clock will only be displayed on the screen for about one minute in standby.

**[Language]:** Use this field to change the language of the device menu text and the on-screen display.

**[Keytone]:** Enable or disable the keyboard sound when pressing the front keys.

**[Weather]:** Enable or disable the weather function. If the weather function is enabled and the standby clock is turned on, after the indoor monitor is successfully connected to the Internet, when the indoor monitor is in standby mode, the local weather, temperature, pressure, humidity and system clock will be displayed on the saver screen.

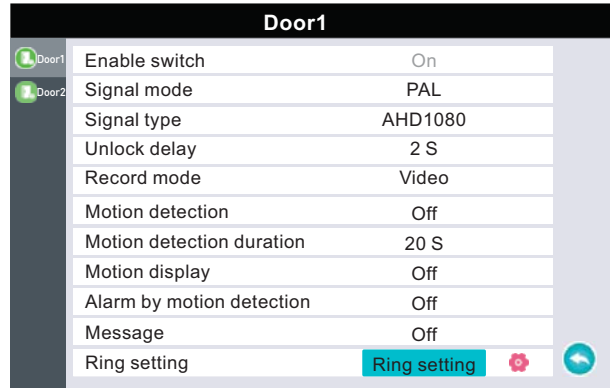
**[Key backlight]:** “On” means that when any key is pressed, all LED lights on the front key will light up.

**[Door panel backlight]:** Enable or disable the door backlight function for the doorbell which supports.

**[Standby display]:** Enable or disable the standby display function. The standby display is used together with the standby clock, and only when both are turned on at the same time, the screen saver clock will always be displayed in standby. When “**Standby Clock**” is set to “**Off**”, the screen will always be black in standby. When “**Standby clock**” is set to “**On**”, and “**Standby display**” is set to “**off**”, the system clock will only be displayed on the screen for about one minute in standby.

## 2.2.2 Setting-Door setting

Press “⚙️” to enter the “Door1” menu. On Door setting menu, user can select Door1 or Door2 to set Signal mode, Signal type, unlock delay, Record mode, Motion detection, Motion detection duration, Motion display, Alarm by motion detection, Message, and Ring setting. Scroll “⚙️” to move the cursor up or down, press “⚙️” to enter edit model, then scroll “⚙️” up or down to modify the parameter value, press “📞 Hang up” to exit.



**[Enable switch]:** Door1 switch can't be changed. For door2, user can enable or disable the preview of door2.

**[Signal mode]:** From this field, select the system output type that is consistent with camera input, i.e. PAL or NTSC or automatic. If the outdoor bell image can't display on the screen, user can change this option “Signal mode” to be “automatic”, the system will automatically check the video input format.

**[Signal type]:** From this field, select the video input mode that is consistent with outdoor bell 1 input, i.e. AHD1080, or AHD720, or CVBS, or CVI1080, or CVI720, or TVI1080, or TVI720. “AHD1080 / AHD720 / CVBS / CVI1080 / CVI720 / TVI1080 / TVI720” means that user can connect a 1080/720/CVBS/CVI1080/CVI720/TVI1080/TVI720 doorbell to the outdoor 1 port.

**[Unlock delay]:** The time duration for the door lock opened, values can be set between 1 second and 10 seconds. On the “Door1” menu, set the unlocking time of door 1. On the “Door2” menu, set the unlocking time of door 2.

**[Record mode]:** Options include “Record” and “Snapshot”. When the monitor detects the TF card, selecting “Record” means that when the visitor presses the call button on the outdoor camera, the device will automatically start recording. Selecting “Snapshot” means that if the visitor presses the call button on the outdoor camera, the device will capture a frame of the video stream as a still photo. If the monitor doesn't detect the TF card, it will not store any videos or pictures.

**[Motion detection]:** Enable or disable motion detection alarm of the outdoor bell.

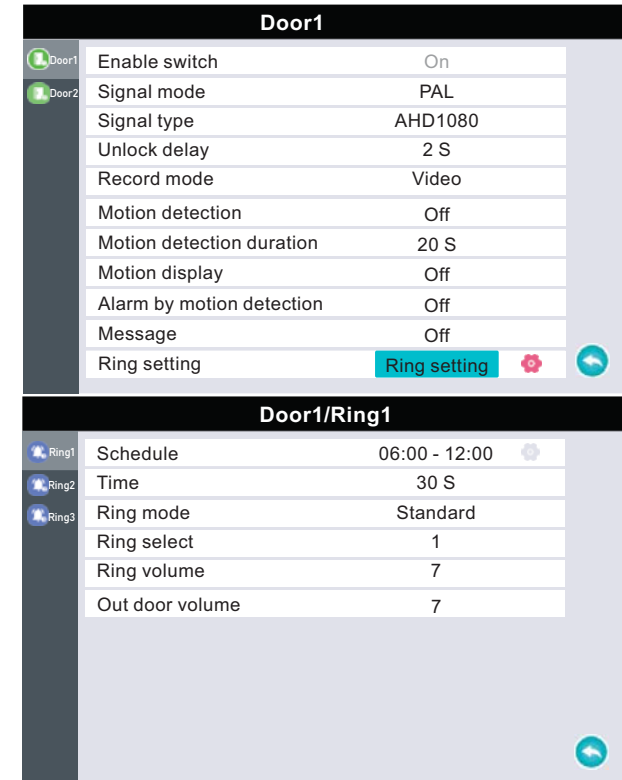
**[Motion detection duration]:** From this field, set the motion detection time, the value can be set from 10s to 20s, 40s, 60s, 80s, 100s, 120s, 140s, 160s, 180s, 200s, 220s, 240s, 260s, 280s, 300s. When the motion detection alarm outdoor bell detects a motion detection alarm, it will record (Recording duration is the duration of motion detection) or take a picture according to the setting of “Record mode”.

**[Motion display]:** On the “Door1” or “Door2” menu, when outdoor bell 1 or outdoor bell 2 detects motion detection alarm, select whether to display the outdoor bell image on the screen.

**[Alarm by motion detection]:** On the “Door1” or “Door2” menu, when outdoor bell 1 or 2 detects motion detection alarm, select whether to play ringtone on the monitor. “Off/1/2/3” can be set.

**[Message]:** In this field, select whether to enable the message function. The message time can be set to 30s, 60s, and 120s. When you enable the message function, you must set the “Record mode” to “Video”, and turn on “Not at home” mode.

**[Ring setting]:**



On the ring setting menu, user can set Ring1, Ring2 and Ring3 three types. Each ring type can set the ring time period, ring time, ring mode, ring select, ring volume and out door volume.

**[Schedule]:** Set the Ring1/Ring2/Ring3 time period.

**[Time]:** Set the Ring1/Ring2/Ring3 ringing time, it can be adjusted from 5s to 45s.

**[Ring mode]:** Set the ring mode, user can choose “Standard” or “Customize”. “Standard” means the system default ringtone, “Customize” means the mp3 ringtone on the TF card.

**[Ring select]:** When the “Ring mode” is set to “Standard”, 12 ringtones are available for setting. When the “Ring mode” is set to “Customize”, user can select the mp3 ringtone on the TF card to set.

**[Ring volume]:** Set the ring volume of the indoor monitor, which can be set from 0 to 10.

**[Out door volume]:** Set the volume of the outdoor bell, which can be set from Off to 10.



## Customize ringtone

User can customize the ring tone of the outdoor bell. When formatting a TF card on the monitor, it will auto-create a folder named "Ring" on the TF card, copy those ringtone files in Mp3 format to this folder, please note that those mp3 ringtone file names, the name can be up to 30 characters, and it can contain numbers or letters.

Set the "Ring mode" to "Customize", and then select the mp3 ringtone on the "Ring select" menu.

### 2.2.3 Setting-Camera setting

On setting menu, move the cursor to "Camera setting", press "⚙️" to enter. On the camera setting menu, user can select Camera1 or Camera2 to set Sensor type, Signal mode, Signal type, Alarm time, Alarm Record mode, Motion detection, Motion detection duration, Motion display, Motion ringtone.

Scroll "⚙️" to move the cursor up or down, press "⚙️" to enter edit mode, then scroll "⚙️" up or down to modify the parameter value, press "Hang up" to exit.

Camera1		
Camera1	Enable switch	On
Camera2	Sensor type	NO
	Signal mode	PAL
	Signal type	AHD1080
	Alarm time	2 S
	Alarm record mode	Video
	Motion detection	Off
	Motion detection duration	20 S
	Motion display	Off
	Alarm by motion detection	Off

**[Enable switch]:** User can enable or disable the preview of camera 1 or camera 2.

**[Sensor type]:** Each camera channel corresponds to an I/O status (see the following status explanations), which means that when an alarm is triggered, it will activate the corresponding channel to start alarm recording or capture a snapshot.

#### I/O status types:

**NO:** "Normally open", it means that in its normal state, the sensor is kept under constant low voltage. If the output voltage changes from low to high, then the alarm will be triggered.

**NC:** "normal close", it means that in its normal state, the sensor is kept under constant high voltage. If the output voltage changes from high to low, then the alarm will be triggered.

**Off:** Set the I/O to "Off", it means that external sensor alarms are not in use.

**[Signal mode]:** From this field, select the system output type that is consistent with camera input, i.e. PAL or NTSC or automatic. If the CCTV camera image can't display on the screen, user can change this option "Signal mode" to be "automatic", the system will automatically check the video input format.

**[Signal type]:** From this field, select the video input mode that is consistent with CCTV camera 1/2 input, i.e. AHD1080, or AHD720, or CVBS, or CVI1080, or CVI720, or TVI1080, or TVI720. "AHD1080 / AHD720 / CVBS / CVI1080 / CVI720 / TVI1080 / TVI720" means that user can connect a 1080/720/CVBS/CVI1080/CVI720/TVI1080/TVI720 doorbell to the camera 1 or camera 2 port.

**[Alarm time]:** The alarm ring time of camera 1/camera 2 if camera 1/camera 2 has been triggered by activity detected by the sensor, values can be set from 1s to 20s.

**[Alarm record mode]:** Set the alarm record mode, user can select "Record" or "Snapshot" to set. When the monitor detects the TF card, selecting "Record" means that when an alarm is triggered, it will activate the corresponding channel to start alarm recording. The I/O alarm recording time is 2 minute, and the motion detection alarm recording time is the duration of the motion detection. Selecting "Snapshot" means that if an alarm is triggered, it will activate the corresponding channel to capture a picture of the current video stream as a still photo. If the monitor doesn't detect the TF card, it will not store any videos or pictures.

**[Motion detection]:** Enable or disable motion detection alarm of the camera 1 or camera 2. When user activates the motion detection alarm function of a certain channel, the motion detection alarm sensitivity can be set to three levels of "high", "medium" and "low", with "high" being the highest sensitivity.

**[Motion detection duration]:** From this field, set the motion detection recording time, the value can be set from 10s to 20s, 40s, 60s, 80s, 100s, 120s, 140s, 160s, 180s, 200s, 220s, 240s, 260s, 280s, 300s. When the motion detection alarm camera detects a motion detection alarm, it will record or take a picture according to the setting of "Alarm record mode".

**[Motion display]:** When the camera detects motion detection alarm, select whether to display the motion detection alarm camera image on the screen.

**[Alarm by motion detection]:** When the camera detects motion detection alarm, select whether to play ringtone on the monitor. "Off/1/2/3" can be set.

**Note: When motion detection alarm function is enabled, when the monitor is in standby mode, the motion detection alarm won't be triggered until 5 seconds later.**

### 2.2.4 Setting-Network setting

On setting menu, move the cursor to "Network setting", press "⚙️" to enter. On the network setting menu, user can set the monitor net pairing mode, preview the cloud services status, IP address and MAC address.

Network setting	
Net pairing Mode	EZ Mode
Cloud services	Unconnected
IP address	
MAC	a0:9f:10:73:13:01

**[Net pairing Mode]:** Use this field to configure the device network. When the monitor will connect to the Wi-Fi router via a wireless network, you can select "EZ Mode" or "AP Mode" to set. When the monitor is connected to the Wi-Fi router through a network cable, you can select "cable" to set. After choosing the net pairing mode, press "Hang up", the following window will pop up, choose "Ok" (the selected option box is red), then press "⚙️" to confirm, the monitor will auto-reboot. After the monitor restarts, it will enter the corresponding net pairing mode.



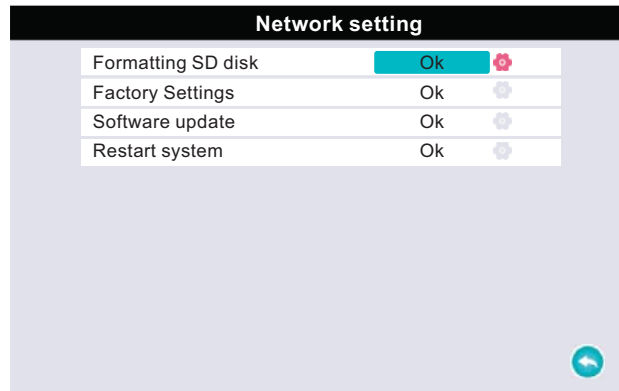
**[Cloud services]:** Device networking status display, including “Unconnected” and “Connected”. “Unconnected” means the monitor is not connected to the Tuya cloud server. “Connected” means that the monitor is connected to the Tuya cloud server through the “TuyaSmart” application.

**[IP Address]:** Preview the monitor IP address in this field. When the monitor is connected to the Wi-Fi router via a wireless network, the IP address can only be displayed when the monitor is successfully connected to the Tuya cloud server, otherwise it will be blank.

**[MAC]:** Preview the monitor mac address in this field.

### 2.2.5 Setting-Senior setting

On setting menu, move the cursor to “Senior setting”, press “⚙️” to enter. On the senior setting menu, user can format SD card, restore factory default settings, update software and restart system.



**[Formatting SD disk]:** Format the SD card in this field. When using it for the first time, please format the inserted TF card. When formatting the TF card on the monitor, it will automatically create five folds named “Ring”, “DOORBELL”, “Digital Frame”, “Message Import” and “BgMusic”. “RING” is used to store Mp3 ringtones, “DOORBELL” is used to store snapshot files and video files, “Digital Frame” is used to store E-Photos, “Message Import” is used to store custom message prompts and only supports Mp3 format, “BgMusic” is used to store the background musics of E-Photos.

**Notice: All the recordings and photographs are be stored in the TF card of the monitor. If the TF card capacity is less than 64GB, the file system format of the TF card must be Fat32. If the TF capacity is greater than or equal to 64GB, the file system format must be exFat. And it is recommended to use a TF card with a writing speed greater than Class 10 on the monitor.**

**[Factory Settings]:** Restore all the parameters to be the factory default values.

**[Software update]:** User can upgrade the software through a TF card. First copy the updated firmware named “update.ius” to the TF card, then insert the TF card into the monitor, the TF card will be automatically detected. Move the cursor to “Software update”, press “⚙️”, some tips “Software update” appear, choose “Ok”(the selected option is red), the press “⚙️” to confirm to update the firmware, choose “Cancel” to cancel.

**Note:**

**1. If the TF card capacity is less than 64GB, please make sure the TF card system**

**format is fat32. If the TF capacity is greater than or equal to 64GB, please make sure the file system format is exFat.**

**2. During updating the monitor, please don’t remove the TF card or power off the monitor.**

**3. The prompt “Updating” will always be displayed on the screen, and after the update is completed, “Success” will be displayed. The monitor will restart automatically.**

**[Restart system]:** Choose whether to restart the system.

### 2.2.6 Setting-Information

On setting menu, move the cursor to “Information”, press “⚙️” to enter. On the information menu, user can preview the system software version, release date, SD remain space and UUID.

Information	
Software version	LB-4L-NET V1.5R
Release date	2021-06-03
SD remain space	7.3G/7.3G
UUID	*93c2d2f4

### 2.3 Scene mode



At home



Not at home



Dormant

**[At home]:** When the user is at home, the monitor can be set to “at home” mode. If a visitor calls, both the outdoor bell and the indoor monitor will ring.

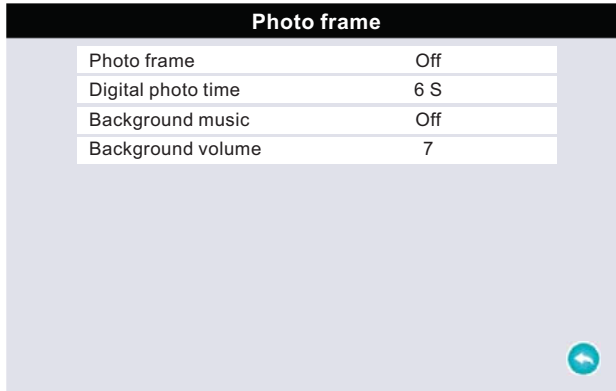
**[Not at home]:** If the user enables the message function of the indoor monitor, the monitor must be set to “not at home” mode, and the record mode of the both outdoor bells must be set to “video”.

**[Dormant]:** This is do not disturb mode. If the monitor is set to “Dormant”, when a visitor calls, both the outdoor bell and the monitor will remain silent.

### 2.4 Photo frame

This field is for E-Photo, when formatting a TF card on the monitor, it will automatically create a folder named “Digital Frame”. User can copy jpg pictures from PC to this folder.

Notice that those jpg picture files can be named up to 30 characters, and can contain numbers or letters.



**[Photo frame]:** Enable or disable the photo frame when exiting the main menu.

**[Digital photo time]:** Set the time for switching photos, the option can be set from 3 seconds to 30 seconds.

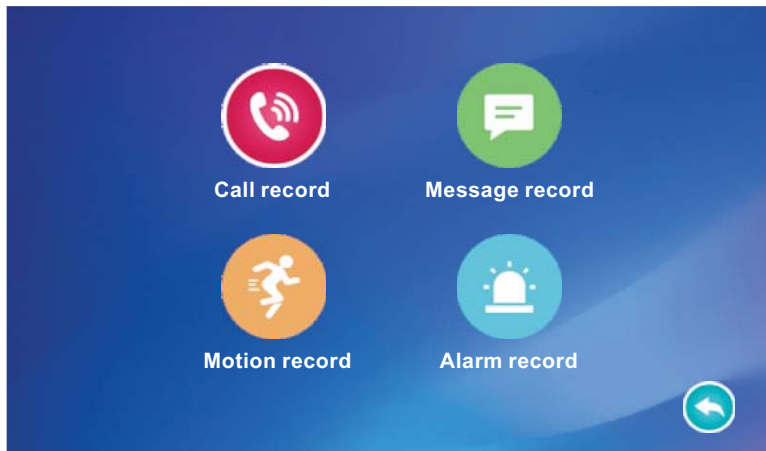
**[Background music]:** Whether to enable the music playback function when the monitor is into photo frame mode. The music is the mp3 rings stored in the “BgMusic” folder of the TF card.

**[Background volume]:** Set the volume of the background music, option can be set from 0 to 10.

**Note: When the screen saver clock and photo frame function are enabled at the same time, the priority of the photo frame is higher than the screen saver clock.**

### 3. Playback

On main menu, move the cursor to “Recording”, then press “⚙️” to enter, including “Call record”, “Message record”, “Motion record” and “Alarm record”.



**[Call record]:** All call record videos and call snapshots can be previewed on the “Call record” file.

**[Message record]:** All message record videos can be previewed on the “Message record” file.

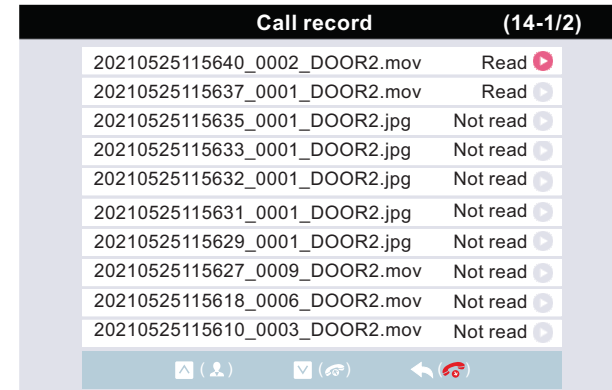
**[Motion record]:** All record videos and snapshots triggered by motion detection alarm can be previewed on the “Motion record” file.

**[Alarm record]:** All record videos and snapshots triggered by I/O alarms can be previewed on the “Alarm record” file.

**Note: If the capacity of the TF card is less than 500MB or the file number reaches 2048, the recorded file will start to be overwritten.**

Please refer to the following methods to play videos or photos. For example, how to play call record videos and call snapshots.

On “Recording” menu, move the cursor to “Call record”, then press “⚙️” to enter the call record list.



All call record videos and call snapshots will be displayed on the call record list. Scroll the “⚙️” button up or down to move the cursor, choose any one to play, and the selected one will be displayed as “”.

**[Read]:** It indicates that the record list has been played.

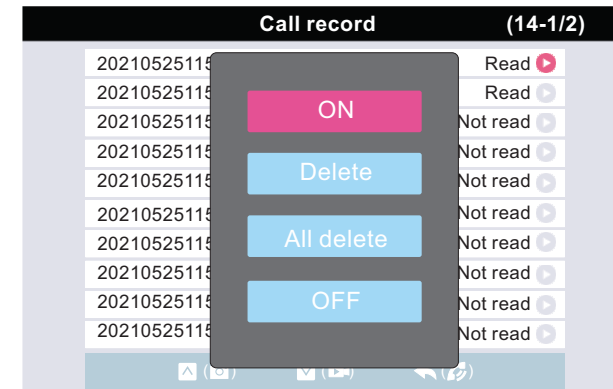
**[Not read]:** It indicates that the record list hasn't been played yet.

**[Monitoring]:** In the file list, press the “Monitoring” button to page up.

**[Talk]:** In the file list, press the “Talk” button to page down.

**[Hang up]:** In the file list, press the “Hang up” button to exit.

In the file list, press and hold the “⚙️” button, a window will pop up(as shown below). Select “ON” to playback the current file, select “Delete” to delete the current file, select “All delete” to delete all the call record and snapshot files, select “OFF” to cancel.



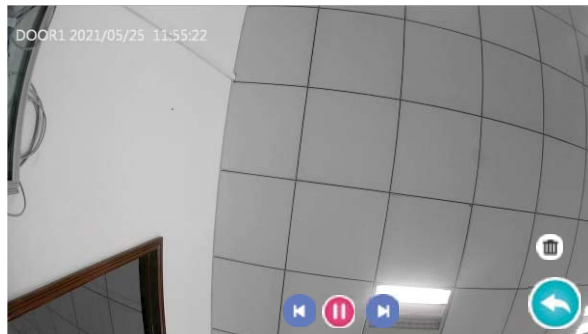
After selecting a list, press “⚙️” to play. Scroll “⚙️” up or down to move the cursor, and press “⚙️” to confirm.

#### Play back a video:



- [ ⏮ ]: Use this item to switch to the previous file.
- [ ⏸ ]: Use this item to pause, and the icon will change to “▶”.
- [ ⏭ ]: Use this item to switch to the next file.
- [ 🔊 ]: Use this item to decrease the volume.
- [ 🔊 ]: Use this item to increase the volume.
- [ ██████████ ]: Play progress bar.
- [ 🗑️ ]: Use this item to confirm whether to delete the current file.
- [ ↶ ]: Use this item to exit.

#### Play back a snapshot:



- [ ⏮ ]: Use this item to switch to the previous file.
- [ ⏸ ]: Use this option to pause, and the icon will change to “▶”.
- [ ⏭ ]: Use this item to switch to the next file.
- [ 🗑️ ]: Use this item to confirm whether to delete the current file.
- [ ↶ ]: Use this item to exit.

#### 4. Screen saver display



On the screen saver display, user can preview the system date, clock, and day of the week. User can also set the wallpaper of the menu, view the number of unread records, including call records, message records, motion records and alarm records.

**Note:** The standby clock is used together with the standby display, and only when both are turned on at the same time, the screen saver clock will always be displayed in standby. When “Standby Clock” is set to “Off”, the screen will always be black in standby. When “Standby clock” is set to “On”, and “Standby display” is set to “off”, the system clock will only be displayed on the screen for about one minute in standby.

[ 🖼️ ]: Use this item to set the wallpaper of the menu, including three different wallpapers. Move the cursor to the icon, and press “⚙️” to change.

[ 📞 ]: View the number of unread call records, when the quantity is greater than or equal to 99, the number is always displayed as 99. User can also use this item to enter “Call record” list to play. Move the cursor to this icon “📞”, and press “⚙️” to enter the “Call record” list.

[ 📧 ]: View the number of unread message records, when the quantity is greater than or equal to 99, the number is always displayed as 99. User can also use this item to enter “Message record” list to play. Move the cursor to this icon “📧”, and press “⚙️” to enter the “Message record” list.

[ 🚶 ]: View the number of unread motion records, when the quantity is greater than or equal to 99, the number is always displayed as 99. User can also use this item to enter “Motion record” list to play. Move the cursor to this icon “🚶”, and press “⚙️” to enter the “Motion record” list.

[ 🚨 ]: View the number of unread alarm records, when the quantity is greater than or equal to 99, the number is always displayed as 99. User can also use this item to enter “Alarm record” list to play. Move the cursor to this icon “🚨”, and press “⚙️” to enter the “Alarm record” list.

**For more description about playback, please refer to the section “3. Playback”.**

If the weather function is enabled and the standby clock is turned on, after the indoor monitor is successfully connected to the Internet, when the indoor monitor is in standby mode, the local weather, temperature, pressure, humidity and system clock will be displayed on the saver screen.

## 5. Mobile Phone Software Visit

### Home Security Begins at the Tuya Smart

Your new security products are start of Tuya Smart around your entire property. Now, you'll always be connected to your home, so you can watch over your property and answer it from anywhere.

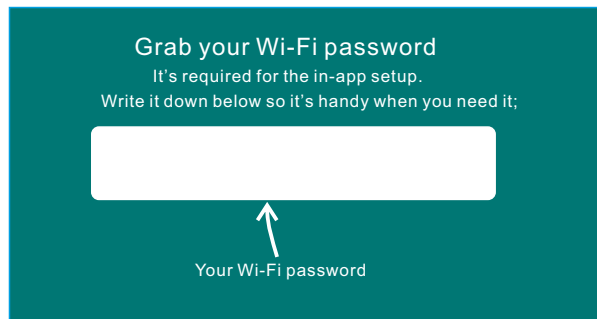
#### 5.1 Download Tuya Smart app

The **Tuya Smart** will walk you through setting up and managing your all security products. Search for "**Tuya Smart**" in one of the app stores, android in "**Play Store**", and IOS in "**App Store**".

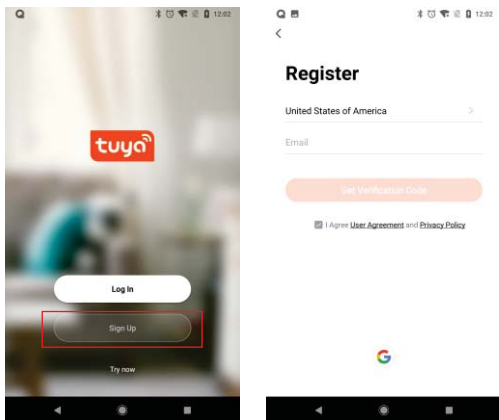
#### 5.2 WIFI setting

Note:

- 1). Router Band--This IP indoor monitor will only connect to the 2.4GHZ band. If you have a dual-band router, you must create unique SSID for the 2.4GHZ and 5GHZ bands. Prior to initiating the syncing process, make sure your device is connect to the 2.4GHZ SSID.
- 2). Router b/g/n --This IP indoor monitor works on 802(b/g/n) network.



#### 5.3 Sign up an account



Select registration region.

Email is your available email account.

Password requires at least 6~20 characters with a mix of letters and numbers.

## 5.4 Set up IP Indoor Monitor

### 5.4.1 Wired network

User can connect the indoor monitor through network cable, operation steps:

1. Connect a network conversion with 4 pin interface to net port on the indoor monitor, and connect the keystone jack of network to the end of the 4 pin interface.
2. Connect the outdoor camera(s) and CCTV camera(s) to the indoor monitor through 4 pin line(s), and the CCTV cameras must use external power switching.
3. Connect the power adapter to the electrical outlet of the indoor monitor and power on.
4. Power on the monitor, wait for a white until the screen shows the screen saver, then the indoor monitor starts completely.

Network connection diagram through wired network of Figure 1 as an example.

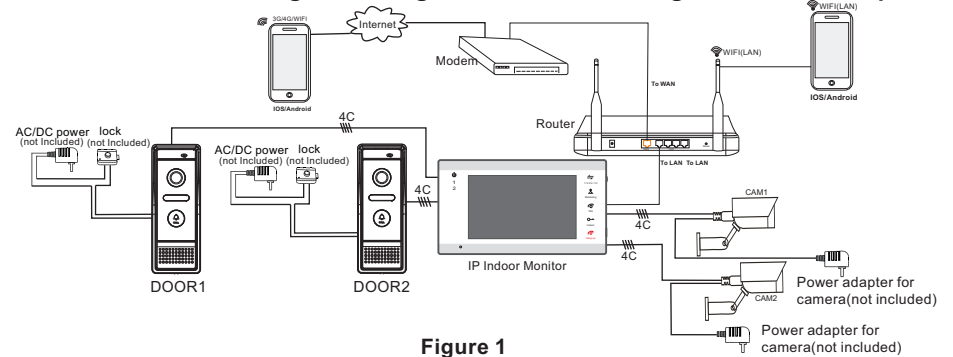


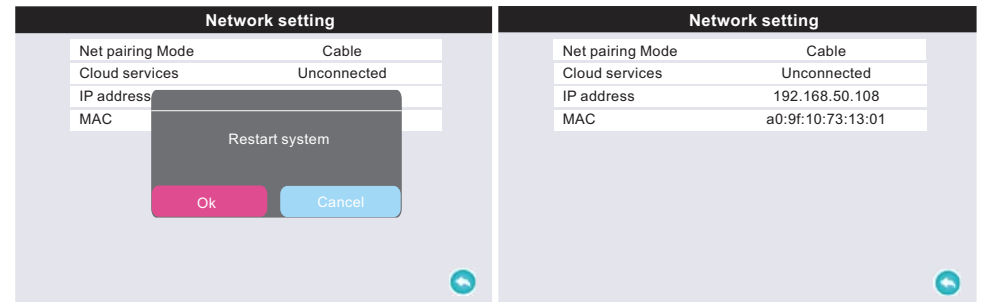
Figure 1

Step 1. Connect your smart-phone to the WiFi router which you want the IP indoor monitor to be connected to.

Step 2. Connect the IP indoor monitor to the same WiFi router.

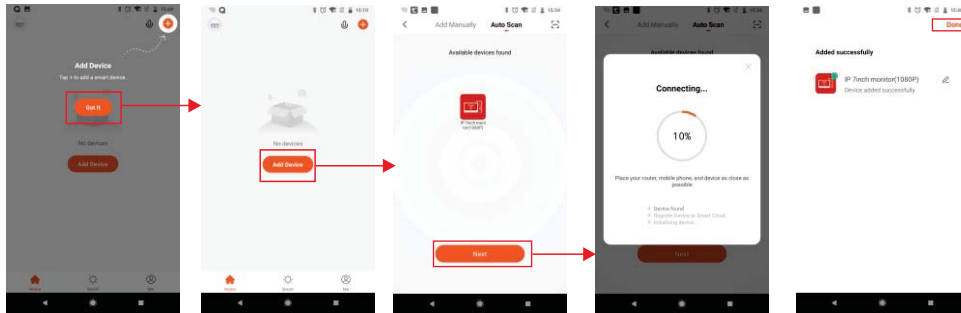
Note: Please make sure the WiFi router and your smart-phone are both connected to the Internet.

Step 3. Set the "net pairing mode" of the monitor to "Cable". Enter the "Setting-> Network setting" menu interface and change the "Net pairing Mode" to "Cable". After choosing "Cable" and press "Hang up", the following window will pop up, select "Ok" (the selected option box is red), and then press "⚙️" to confirm, the monitor will auto-reboot. After the monitor restarts, it will enter the cable net pairing mode, and the monitor will obtain an IP address.





**Step 4. Login the Tuya Smart app, add a new IP monitor. Click “Add Device”->“Auto Scan”-> choose available device found to add.**



#### 5.4.2 Wireless network

The indoor monitor with WiFi function can also work under wireless network. Network connection diagram via wireless network as Figure 2 as an example.

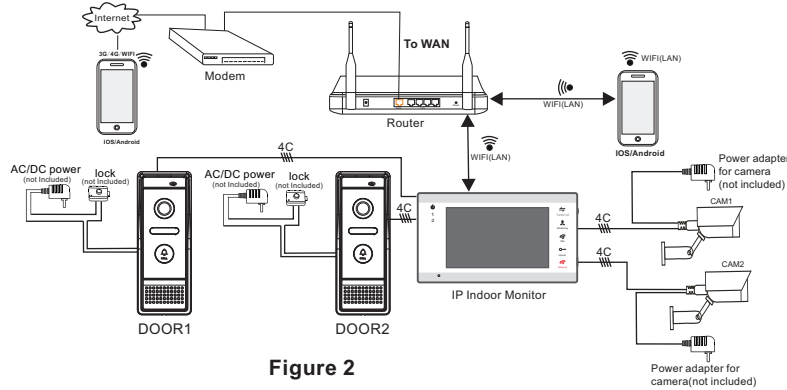


Figure 2

**Note:**

1. Please note that the monitor only works under 2.4G WIFI, not support 5G WIFI.
2. Bring the monitor and the WIFI router within 49 feet(about 15 meters).

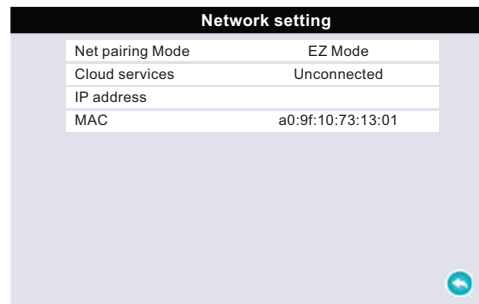
User can configure the monitor through AP mode or EZ mode.

#### A. Add a device by EZ Mode.

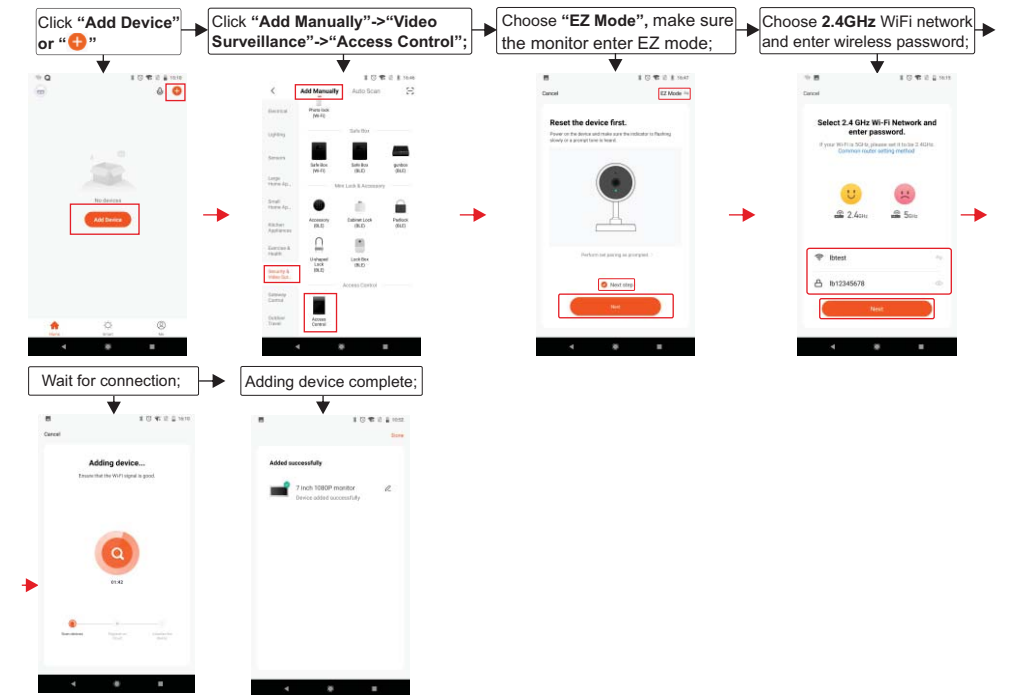
**Step 1. Make the monitor into EZ mode;**

**Note:**

The default net pairing mode of the monitor is “EZ Mode”. Enter the “Setting->Network setting” menu interface and ensure the “Net pairing Mode” to “EZ Mode”.



**Step 2. Login the Tuya Smart app, add a new IP monitor.**

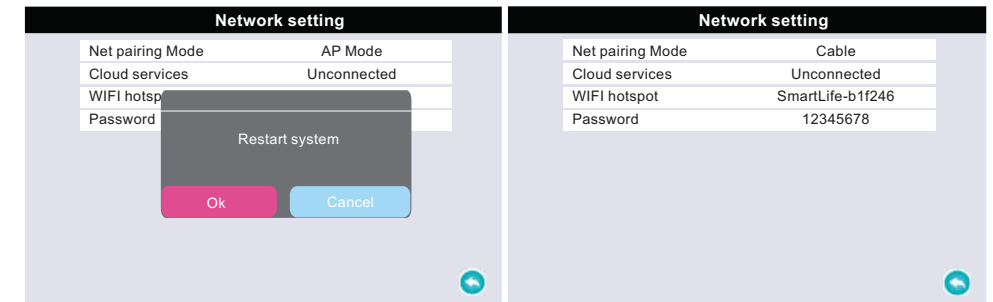


#### B. Add a device by AP mode.

**Step 1. Make the monitor into AP mode by manual.**

Enter the “Setting->Network setting” menu interface and change the “Net pairing Mode” to “AP Mode”. After selecting “AP Mode”, and press “Hang up”, the following window will pop up, select “Ok”(the selected option box is red), and then press “gear” to confirm, the monitor will auto-reboot. After the monitor restarts, it will enter the AP net pairing mode, the WiFi hotspot of the monitor and the password of the hotspot will be displayed on the menu.

**Note:** The Wifi hotspot of the monitor is shown as “SmartLife-xxxx”, and the password of the hotspot is “12345678”.



## Step 2. Login the Tuya Smart app, add a new IP monitor.

Touch "Add Device" or "+" → Click "Add Manually" → "Video Surveillance" → "Access Control" → Choose "AP Mode" → Make sure the indoor monitor is already in AP mode, click "Next".

Choose 2.4GHz WiFi network and enter wireless password; → Connect your mobile phone to the device's hotspot → Fill in the hotspot password, the password is "12345678"; → Connect to the device's hotspot shown as "SmartLife-xxxx".

Return to this app and continue adding device; → Wait for connection; → Adding device complete;

## 5.5 The icons on live view

Preview mode  
Mute  
Speak  
Switch Channel  
Snapshot  
Unlock for Door1

Full screen preview  
Volume on  
Album  
Unlock for Door2  
Record/Stop record  
Playback recording on SD card  
Advanced setting


## 5.6 Share your device


Steps: Settings>>Share Device>>Tap on "Add Sharing">>Type in account>>Confirm Sharing.

### Note:


1. When sharing the device to another account, the registration area of the shared account must be the same as yours.
2. If a permanent resident in your home has an account, we recommend that you go to "Home Management" interface to set the account as a family member and share all your family devices and "Tap-To-Run" Scene with the family member.

## 6. Alarm Instructions

CAM1 and CAM2 of this production have each an alarm function. When the trigger terminal and GND is shorted, the alarm is activate, the speaker of the indoor monitor rings and continues the duration according to the menu “Setting->Camera setting->Camera 1/Camera 2 -> Alarm time”, during this time, press “ Hang up” to stop alarming and enter the standby mode.

For the models with SD card, simultaneously, triggers recording or snapshotting (related to the system settings). The recording time is 120s, during this time, press “ Hang up” to stop alarming and enter the standby mode.

## Connection diagram:

 Be applicable to connect 2 normally closed (NC) or normally open (NO) alarm inputs.

2 camera channels of alarm input without limitations on input type (can either be the normally open type or the normally closed type).

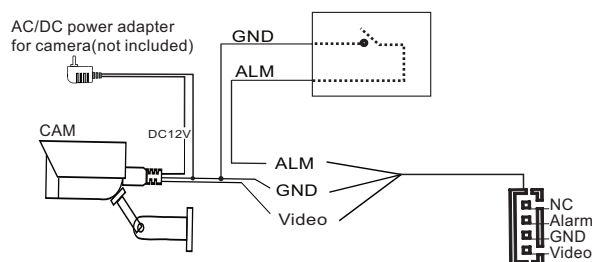
ALM terminal of the alarm detector is connected in parallel with the ALM terminal (The alarm detector shall be supplied by external power supply).

Ground terminal of the alarm detector is connected in parallel with the GND terminal of the camera.

For NO alarm inputs, when the GND and ALM are in the connection state, it will trigger the alarm.

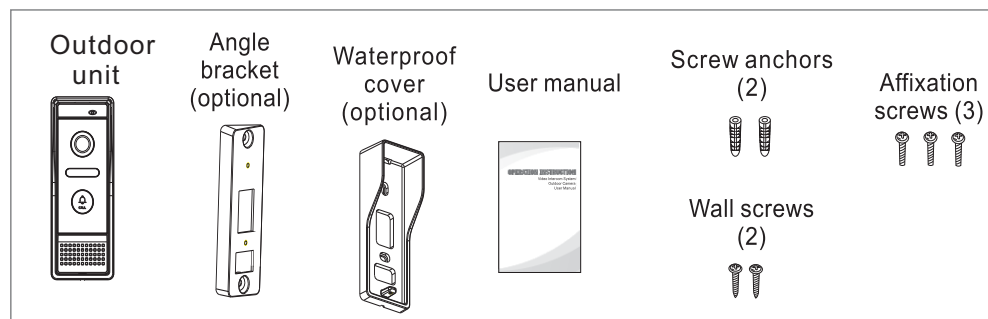
For NC alarm inputs, when the GND and ALM are in the disconnect state, it will trigger the alarm.

It applies to any alarm sensor.

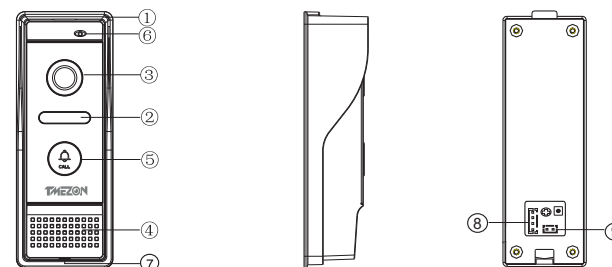


## Instruction for outdoor doorbell

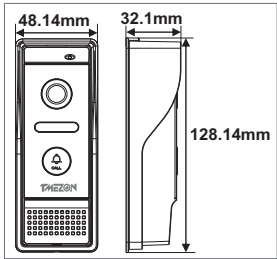
### Accessories



### Specification for outdoor doorbell

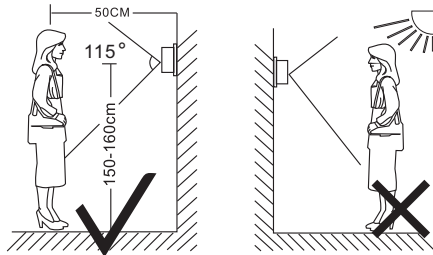


No.	Descriptions
1. Weather shield	Affix and protect outdoor camera from rain/snow
2. IR LEDs	Provides illumination with IR LEDs for better visibility.
3. Camera	Capture image to transmit to display
4. Speaker	Sound from indoor monitor
5. Call button	Call indoor monitor for intercommunication
6. Microphone	Transmit voice to indoor monitor
7. Screw slot	Slots for installation screws
8. System port	Connect to the indoor monitor.
9. Door lock port	Connect to the door lock.

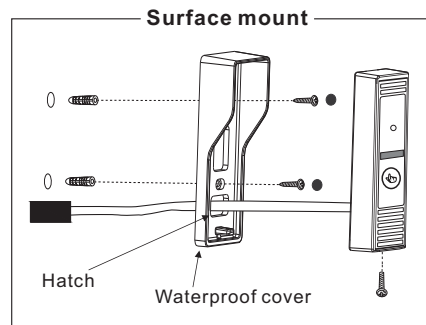
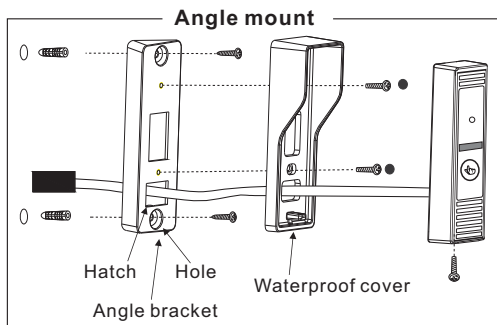


Camera	1/3 inch CMOS camera
View angle	115°(H.)
Definition	1080P(1920*1080)/720P(1280*720)/CVBS
LEDs for night	IR LEDs(120 °)
Day/Night	IR-CUT
Power consumption	300mA max.
Power supplier	Supplied from indoor monitor
Operation temp.	-20°C~+60°C
Installation	Surface mount/Angle mount

### Installation for outdoor doorbell



You have two options to install outdoor doorbell: Angle mount and Surface mount



### Note on doorlock's connection

The electric locks are usually divided into NC lock and NO lock, their wiring is different, the NC lock need to work with the additional power supply control.

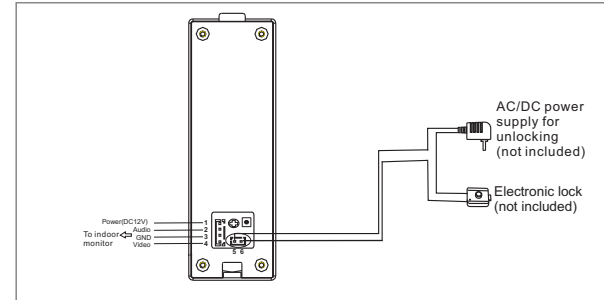
#### Note:

1. The doorbell or the monitor will not provide the power to door lock.
2. The doorbell can support door locks within 30V.
3. Door lock's power supply depends on its door lock, if the door lock is 12V, the corresponding power supply is 12V, etc.
4. Make sure the input voltage from the monitor to the outdoor doorbell must reach 11.7V when unlocking.

**NO Lock:** Always closed when power or power off, only open when press unlock.

**NC Lock:** Always open when power off. Closed when power and open after press unlock.

### Method 1: NO Lock connection without power supply control (NO lock only)



### Method 2: NO & NC Lock connection with power supply control

