

# IP Camera Quick Guide

## 1. Important Safeguards and Warnings

- Avoid dropping or striking the IP camera.
- Keep the IP Camera in a normal room environment, between -10°C ~ +40°C, away from any direct heat source like direct sun light. Please do not install the IP Camera in a damp, smoky, or dusty environment. Do not let solids or liquids fall into or infiltrate the IP camera.
- Use within the power and surge protection rating.
- Don't disassemble or try to repair the IP Camera by yourself. Attempts to do so will void manufacturer's warranty!

## 2. Package Contents

Your IP Camera package should come with the following items:

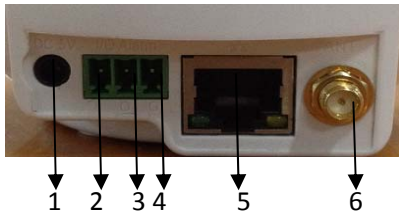
- IP Camera
- Power Adapter
- Installation CD (with full manual and IPC software)
- This Quick Guide

## 3. Description On The Ipcam(Please take actual model as quasi)

### A. Appearance

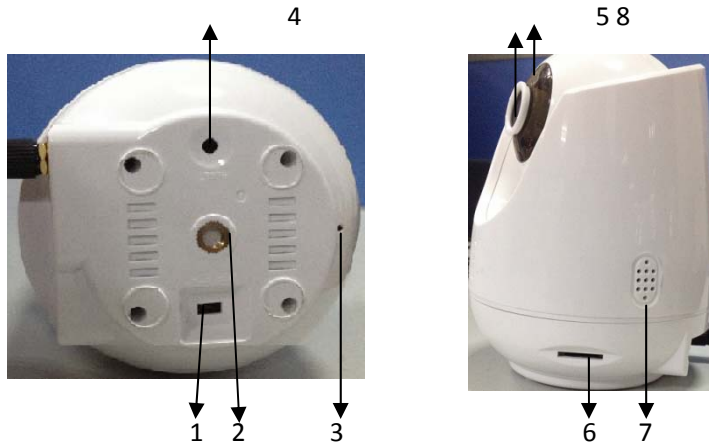


### B. Back interface



1. DC 5V
2. I/O Alarm input interface
3. I/O Alarm output interface
4. Grounding
5. RJ-45 interface
6. Antenna interface

C. The bottom and side interface



1. Enter AP mode button
2. The bottom bracket installation position
3. Microphone
4. Reset button, Press the key equipment will restore the factory settings
5. Camera lens
6. SD card socket
7. Speaker
8. IR

### 3. Device Connect

A. The wired mode

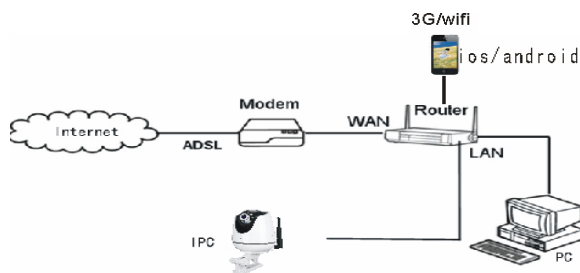
- 1). Connect the crystal head of network cable to RJ45 interface of IP camera.
- 2). Connect the power adapter to the electrical outlet of the IP camera and power on.
- 3). The network connection normally in 5 seconds at the network connection of light (orange) will light up, data indicator light (green) shine, this time the network cameras physical connections to complete.

B. Wirelsss mode

- 1). Connect the power adapter to the electrical outlet of the IP camera and power on.
- 2). With the mobile phone will establish a connection between IPCam and wireless router. (Please refer to 7 “**mobile phone support**” )

### 4. Network connection and port forwarding

A. Network connection diagram as below:



## B. Port forwarding



If visit IP Camera through IE browser or CMS client from WAN, you must do port forwarding on the router. Take NETGEAR router for example.

### Operation Steps:

- ① After login the interface of the router, choose "Port Forwarding";
- ② Choose "Add custom Service";
- ③ Input IP camera port;
- ④ Input IP camera IP address, click "Apply" (the http port and IP address should be the same as figure 4 which set by your own).

Note: Different router has different settings for port forwarding; please kindly follow your router guide

to do the port forwarding.

After the port-forwarding is done, you could view the IP Camera from WAN now.

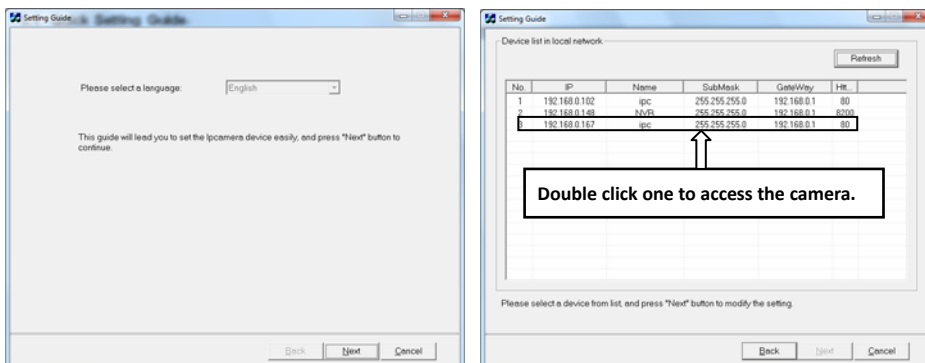
## 5. Quick setting guide

1) Connect the IP Camera to network (or PC), and then to the IP Camera electric start.

Note: if an IP Camera and a PC connected directly, PC IP address to use manual distribution methods, and the IP address of the PC network segment and the IP Camera should keep the same segment.

2) Copy the quick setting guide program "HiCamSearcher\_v1.1.exe" from the CD to user's PC, and run it on PC.

3) Press "Next" button, pop-up as below interface. Click "Refresh" button and online devices on LAN will be shown on the list.

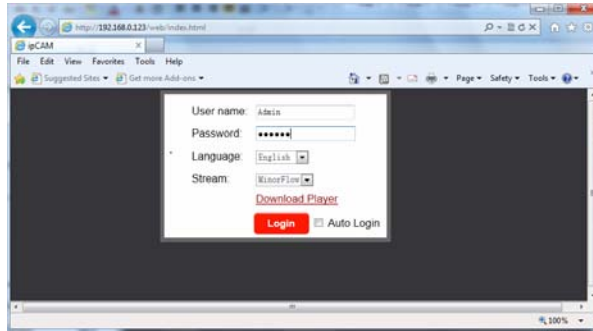


## 6. System Login

1) Open the web page, enter default IP address “<http://192.168.1.88>”. If the http port of IPC has been changed (if it is not “80”), it will be necessary to add a “:” followed by a port number. For example, assuming that the current port number is “P”, enter “<http://192.168.0.X:P>”, to correct the problem.


**Note: If the device is connected to the WAN, the IP address should be a public IP address.**

The system will automatically enter the GUI as follows.

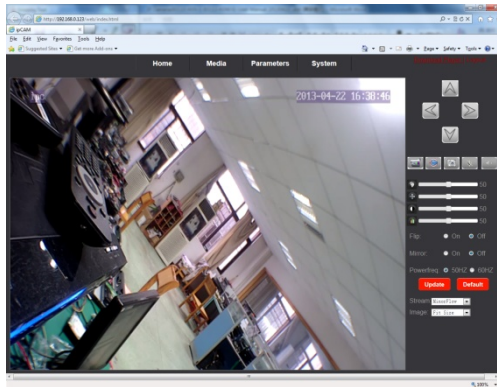


2) First users must click “[Download Player](#)” and it will download the file “IPCamera\_OCX\_Setup.zip” to the PC. Open the zip file to run the file “IPCamera\_OCX\_Setup.exe” and it will install IPC’s OCX on the PC.

3) After installing player on the PC, input the authorized user name and password, the default user name of the administrator is “**Admin**” and the default password of administrator is “**888888**”. Select language “English” or “Chinese”, choose network stream “Main Flow” or “Minor Flow”, and then click “[Login](#)”. “ Auto Login” indicates that it will enter into “Home” interface automatically when the device will be connected to the web browser again on the same PC.

A close-up view of the login form fields from the previous image. The "User name:" field contains "Admin". The "Password:" field contains eight dots. The "Language:" dropdown menu is set to "English". The "Stream:" dropdown menu is set to "MinorFlow". Below the fields are a red "Login" button and a checkbox labeled "Auto Login" which is checked. A link labeled "Download Player" is positioned above the "Login" button.

4) After login, it will enter into “Home” interface of the live view as follows.



## 7. Mobile Phone Support

This IP camera can transmit live feed to your mobile phone, and support P2P for mobile monitoring, so that you can have 'on the go' access to your surveillance system from virtually anywhere. To view, you must install a mobile operating system specific program into your mobile. The mobile programs are located on the included CD, or downloaded via "APP Store" for an iPhone mobile, or downloaded via "Google Play" for an android mobile. In APP Store or Google Play, please search for "MobileEyedoor+". Please see the instruction manual for your mobile to install the program. Currently, there are a limited number of phones that are supported: Google Android and Apple iPhone.

### Note:

- ①. Prior to using this feature, you should apply for an Internet connection service for your mobile phone, such as 3G or 2.5G. Please contact your mobile service provider for details.
- ②. You can watch four live feed channels at a time with Google Android or iPhone Mobile.
- ③. It is recommended that in "mobile stream" section, the image quality of the IPC for remote access viewing via mobile phone. The better the image quality is, the bigger the bit rate and the frame rate of the IPC are. Please choose the suitable quality according to user's bandwidth.

### A. Soft AP function and wireless network

The ipcam can be worked in AP mode. If user doesn't want to connect a wired cable to the indoor device, and user need prepare a wireless router and a smart-phone or a pad with IOS or Android system.

**Step 1.** First user must install a mobile operating system specific program into his mobile or pad. and the iPhone and android program should be downloaded via "APP Store" and "Play Store". In "Play Store" or "APP Store", please search for "MobileEyeDoor+" and install it onto user's mobile or Pad. Please see the instruction manual for user's mobile to install the program.

**Step2.** Turn on user's phone WLAN function, then click the "MobileEyeDoor+" icon to run the program, click " + " to select add mode, here must select " **Install & add new wireless device** " to the next interface to add wireless device.

**Step3.** Then make the ipcam into standby mode, and long-press the "WIFI/ETH" button on the bottom panel, don't loosen the button until the blue light started flashing , this means the device will reboot automatically and go into AP mode.

**Step4.** On "WIFI setting" interface, wait for a moment and phone with android system can be connected to the device WIFI successfully automatically. For the phone with IOS system user need to connect device WIFI function manually. Click "Manual connect device WIFI " to enter WLAN interface of user's phone to see available networks,

and UID number of the ipcam device(the UID is attached to the machine) will be shown on the available networks list. Select it and connected successfully means the mobile will be connected to the ipcam unit directly (shown as follows).

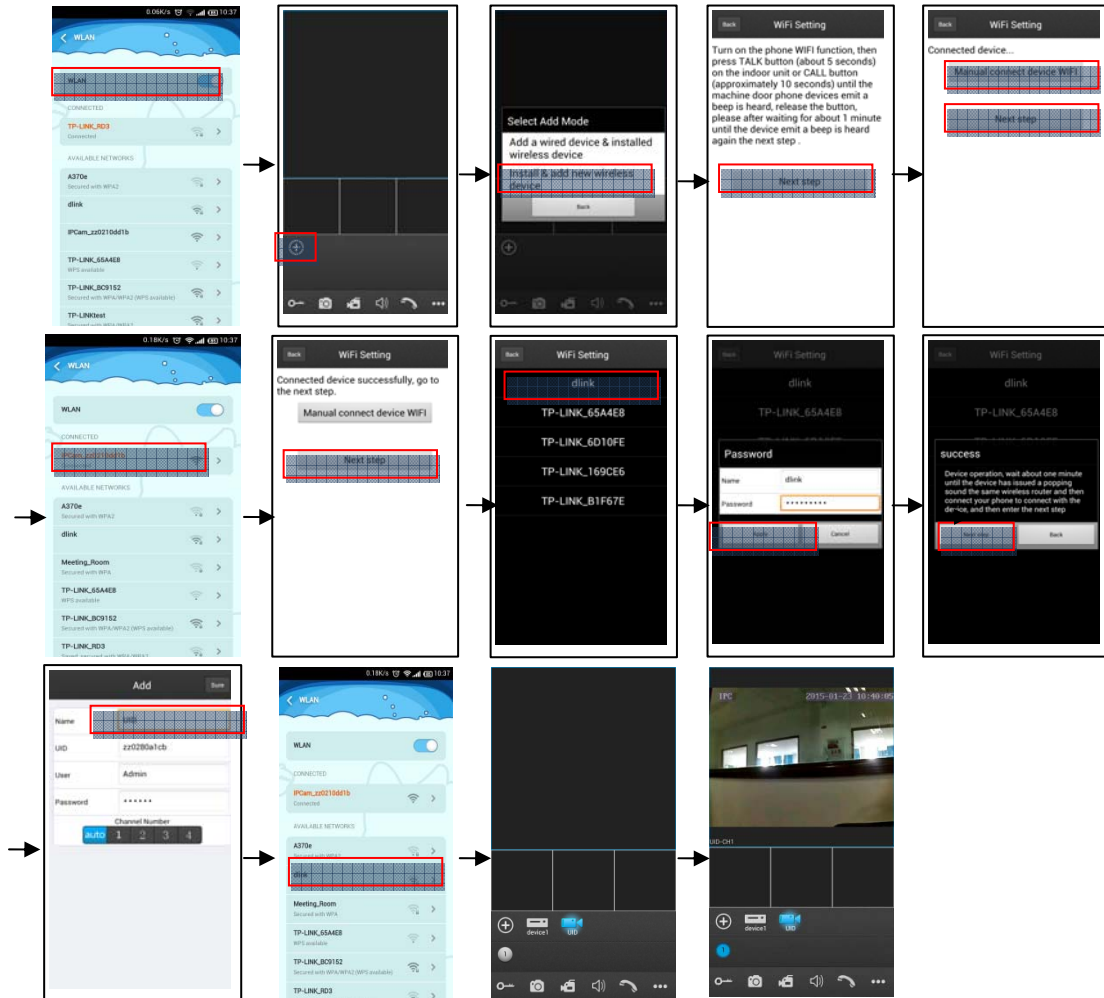
**Step5.** Return to the “WIFI setting” interface and go to the next step. On this interface, available wireless devices will be shown on the list. Choose one and click it, if the wireless password of the wireless router is enabled, it will pop-up a window to enter the password of the wireless router, input the correct password and setting ok, the ipcam device will reboot automatically, it will be connected to the wireless router after starting

**Step6.** Click “Next Step” to add ipcam device, input the correct password of the device, default as “888888”, and then save.

**Step7.** Return to the WLAN settings on the mobile and choose the wireless router which the ipcam has been connected to. Now the wireless function of the ipcam device has been activation and works normally (Shown as follows).

**Step8.** Now user can surveillance, communication, capture and recording on his phone/pad about the remote device via the program “MobileEyeDoor+”

**In the following diagram, we use a smart-phone with android system to a ipcam. The usage of an iPhone/iPad with IOS system is similar.**

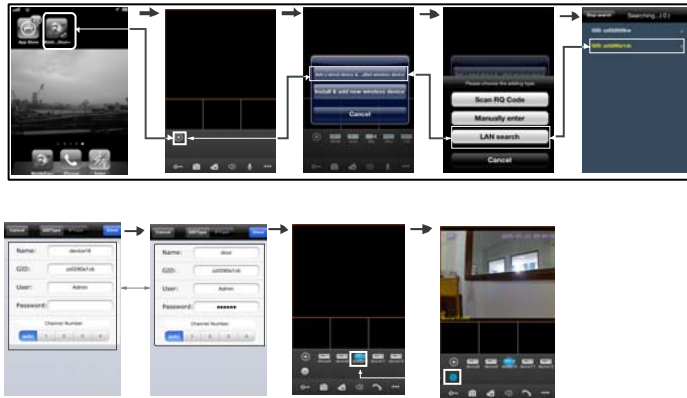


## B. Wired network



- Step 1. Please download a program “MobileEyeDoor+” via “Play Store” on a smart-phone/pad with android system or via “APP Store” on an iPhone/ iPad with IOS system.
- Step 2. Connect the ipcam device through a wired cable to a wireless router, connect user’s phone/pad to the same wireless router through WIFI.
- Step 3. Run the program “MobileEyeDoor+”. Click “+” to add a new device, first click “Add a wired device & add wireless device” to the next interface to choose the adding type, there are three methods to add device: “Scan QR Code”, “Manually enter” and “LAN Search”.
- Step 4. Fill in the correct information about the device in the corresponding fields. The default user name and password are “Admin” and “888888”.
- Step 5. After adding the device successfully, the device will appear on the main screen. User can enable the alarm push function of the current device whether or not according to his own’s actual requirement.
- Step 6. Now user can surveillance, communication, capture and recording on his phone/pad about the device via the program “mobileeyedor+”.

**In the following diagram, we use an iPhone mobile with IOS system. The usage of a mobile with android system is similar.**



## 8. FAQ

### 1). Forget password?

**Solution:** There is a "Reset" button on the device interface, press it for 3 seconds or more to restore all default parameters except IP address (Factory settings), user name and password of administrator are "Admin" and "888888".

### 2). NO video Image displayed in IE browser?



**Possible reason:** Player (ActiveX) not installed.

**Solution:** Player (ActiveX) must be installed when visiting IP camera for the first time via internet Explore.

**How to install:** Visit IP camera, first users must click “[Download Player](#)” and it will download the file “IPCamera\_OCX\_Setup.zip” to the PC. Open the zip file to run the file “IPCamera\_OCX\_Setup.exe” and it will install IPC’s OCX on the PC.

### 3). Fail to visit IP camera via IE browser?

**Possible Reason 1:** Network is disconnected.

**Solution:** Connect your PC to network, checking whether it works properly or not. Check whether there is cable failure or network failure caused by pc virus, until PC can be connected with the command of ping.

**Possible reason 2:** IP Address has been occupied by other devices.

**Solution:** Stop the connection between IP camera and Network, hook up IP camera to PC separately, reset IP address according to the proper operations recommended.

**Possible reason 3:** IP addresses are in different subnets.

**Solution:** Check IP address, subnet masking address of the IPC and the settings of Gateway.

**Possible reason 4:** Physical address of network conflict with IP camera.

**Solution:** Modify the physical address of IP camera.

**Possible Reason 5:** Web port has been modified.

**Solution:** Contact Network Administrator to obtain related information.

## Federal Communications Commission (FCC) Statement

This device complies with part 15 of the FCC Rules. Operation is subject to the following two conditions: (1) This device may not cause harmful interference, and (2) this device must accept any interference received, including interference that may cause undesired operation.

**Note:** This equipment has been tested and found to comply with the limits for a Class B digital device, pursuant to part 15 of the FCC Rules. These limits are designed to provide reasonable protection against harmful interference in a residential installation. This equipment generates, uses and can radiate radio frequency energy and, if not installed and used in accordance with the instructions, may cause harmful interference to radio communications. However, there is no guarantee that interference will not occur in a particular installation. If this equipment does cause harmful interference to radio or television reception, which can be determined by turning the equipment off and on, the user is encouraged to try to correct the interference by one or more of the following measures:

- Reorient or relocate the receiving antenna.
- Increase the separation between the equipment and receiver.
- Connect the equipment into an outlet on a circuit different from that to which the receiver is connected.
- Consult the dealer or an experienced radio/TV technician for help.

**Warning:** Changes or modifications made to this device not expressly approved by LB Technology Co.,Ltd may void the FCC authorization to operate this device.

The operating distance must be at least 20cm away from user body.

**Note:** The manufacturer is not responsible for any radio or tv interference caused by unauthorized modifications to this equipment. Such modifications could void the user’s authority to operate the equipment.

★ If there is any doubt or disputability regarding information in this manual, you can call our company for clarification.  
★ In all cases, for more details, please refer to the electronic user’s manual on the CD. Thank you!