



The University of Michigan  
Radiation Laboratory  
3228 EECS Building  
Ann Arbor, MI 48109-2122  
Tel: (734) 764-0500

Measured Radio Frequency Emissions  
From

**Strattec Transmitter**  
**Model(s): 56040652AB, 56040669AB,**  
**56040649AB, 05026134AA**

Report No. 415031-241  
May 5, 2005

Copyright © 2005

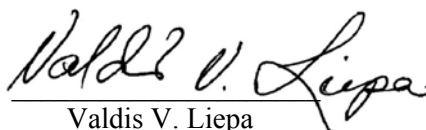
For:  
Strattec Security Corporation  
3333 West Good Hope Road  
Milwaukee, Wisconsin 53209

Contact:  
Bill Lusa  
Tel: (734) 484-1387  
Fax: (734) 484-1389  
PO: Verbal

Measurements made by:

Joseph D. Brunett

Tests supervised by:  
Report approved by:



Valdis V. Liepa  
Research Scientist

---

## Summary

Tests for compliance with FCC Regulations Part 15, Subpart C, and Industry Canada RSS-210, were performed on Strattec model(s) 56040652AB, 56040669AB, 56040649AB, 05026134AA. This device is subject to the Rules and Regulations as a Transmitter.

In testing completed on March 23, 2005, the device tested in the worst case met the allowed FCC specifications for radiated emissions by 0.5 dB (see p. 6). Besides harmonics, there were no other significant spurious emissions found; emissions from digital circuitry were negligible. The conducted emission tests do not apply, since the device is powered from a 3 VDC battery.

## 1. Introduction

Strattec model 56040652AB, 56040669AB, 56040649AB, 05026134AA was tested for compliance with FCC Regulations, Part 15, adopted under Docket 87-389, April 18, 1989, and with Industry Canada RSS-210, Issue 5, November, 2001. The tests were performed at the University of Michigan Radiation Laboratory Willow Run Test Range following the procedures described in ANSI C63.4-2003 "Methods of Measurement of Radio-Noise Emissions from Low-Voltage Electrical and Electronic Equipment in the Range of 9 kHz to 40 GHz". The Site description and attenuation characteristics of the Open Site facility are on file with FCC Laboratory, Columbia, Maryland (FCC Reg. No: 91050) and with Industry Canada, Ottawa, ON (File Ref. No: IC 2057).

## 2. Test Procedure and Equipment Used

The pertinent test equipment commonly used in our facility for measurements is listed in Table 2.1 below. The middle column identifies the specific equipment used in these tests.

**Table 2.1 Test Equipment.**

<b>Test Instrument</b>	<b>Eqpt. Used</b>	<b>Manufacturer/Model</b>
Spectrum Analyzer (0.1-1500 MHz)		Hewlett-Packard, 182T/8558B
Spectrum Analyzer (9kHz-22GHz)	X	Hewlett-Packard 8593A SN: 3107A01358
Spectrum Analyzer (9kHz-26GHz)	X	Hewlett-Packard 8593E, SN: 3412A01131
Spectrum Analyzer (9kHz-26GHz)		Hewlett-Packard 8563E, SN: 3310A01174
Spectrum Analyzer (9kHz-40GHz)		Hewlett-Packard 8564E, SN: 3745A01031
Power Meter		Hewlett-Packard, 432A
Power Meter		Anritsu, ML4803A/MP
Harmonic Mixer (26-40 GHz)		Hewlett-Packard 11970A, SN: 3003A08327
Harmonic Mixer (40-60 GHz)		Hewlett-Packard 11970U, SN: 2332A00500
Harmonic Mixer (75-110 GHz)		Hewlett-Packard 11970W, SN: 2521A00179
Harmonic Mixer (140-220 GHz)		Pacific Millimeter Prod., GMA, SN: 26
S-Band Std. Gain Horn		S/A, Model SGH-2.6
C-Band Std. Gain Horn		University of Michigan, NRL design
XN-Band Std. Gain Horn		University of Michigan, NRL design
X-Band Std. Gain Horn		S/A, Model 12-8.2
X-band horn (8.2- 12.4 GHz)		Narda 640
X-band horn (8.2- 12.4 GHz)		Scientific Atlanta , 12-8.2, SN: 730
K-band horn (18-26.5 GHz)		FXR, Inc., K638KF
Ka-band horn (26.5-40 GHz)		FXR, Inc., U638A
U-band horn (40-60 GHz)		Custom Microwave, HO19
W-band horn(75-110 GHz)		Custom Microwave, HO10
G-band horn (140-220 GHz)		Custom Microwave, HO5R
Bicone Antenna (30-250 MHz)	X	University of Michigan, RLBC-1
Bicone Antenna (200-1000 MHz)	X	University of Michigan, RLBC-2
Dipole Antenna Set (30-1000 MHz)	X	University of Michigan, RLDP-1,-2,-3
Dipole Antenna Set (30-1000 MHz)		EMCO 2131C, SN: 992
Active Rod Antenna (30 Hz-50 MHz)		EMCO 3301B, SN: 3223
Active Loop Antenna (30 Hz-50 MHz)		EMCO 6502, SN:2855
Ridge-horn Antenna (300-5000 MHz)	X	University of Michigan
Amplifier (5-1000 MHz)	X	Avantak, A11-1, A25-1S
Amplifier (5-4500 MHz)	X	Avantak
Amplifier (4.5-13 GHz)		Avantek, AFT-12665
Amplifier (6-16 GHz)		Trek
Amplifier (16-26 GHz)		Avantek
LISN Box		University of Michigan
Signal Generator		Hewlett-Packard 8657B

### 3. Configuration and Identification of Device Under Test

The DUT is a hand held 3 button or 4 button 315 MHz low power transmitter designed to send identification and control signals to a corresponding receiver. It is 1 x 0.5 x 3.0 inches in size and is manually activated when a button is depressed. The device transmits an amplitude modulated Manchester encoded signal. It ceases to transmit within 5 seconds of deactivation (see figure 6.5), but will continue to transmit for up to 25 seconds if a button held down.

The DUT is manufactured by Strattec Security Corporation, 3333 West Good Hope Road, Milwaukee, Wisconsin 53209. It is identified as:

Strattec Security Corporation Transmitter  
Model(s): 56040652AB, 56040669AB, 56040649AB, 05026134AA  
S/N or P/N: B  
FCC ID: OHT692427AA  
IC: 5461A-692427AA

Four models of the DUT exist. There are two 4 button models with the Chrysler insignia and two 3 button models with the Dodge insignia. The PCB is the same for all models. Note:

#### 3.1 Modifications Made

There were no modifications made to the DUT by this laboratory.

### 4. Emission Limits

The DUT tested falls under the category of an Intentional Radiators and the Digital Devices. For FCC, it is subject to Part 15, Subpart C, (Section 15.231), Subpart B, (Section 15.109), and Subpart A, (Section 15.33). For Industry Canada it is subject to RSS-210, (Sections 6.1 and 6.3). The applicable testing frequencies with corresponding emission limits are given in Tables 4.1 and 4.2 below. As a digital device, the DUT is considered as a Class B device.

#### 4.1 Radiated Emission Limits

Table 4.1. Radiated Emission Limits (FCC: 15.33, 15.35, 15.109; IC: RSS-210, 6.2.2(r)).  
(Digital Class B)

Freq. (MHz)	E <sub>lim</sub> (3m) $\mu$ V/m	E <sub>lim</sub> dB( $\mu$ V/m)
30-88	100	40.0
88-216	150	43.5
216-960	200	46.0
960-2000	500	54.0

Note: Average readings apply above 1000 MHz (1 MHz BW)  
Quasi-Peak readings apply to 1000 MHz (120 kHz BW)

Table 4.2. Radiated Emission Limits (FCC: 15.231(b), 15.205(a); IC: RSS-210; 6.1, 6.3).  
(Transmitter)

Frequency (MHz)	Fundamental Ave. E <sub>lim</sub> (3m)		Spurious** Ave. E <sub>lim</sub> (3m)	
	(μV/m)	dB (μV/m)	(μV/m)	dB (μV/m)
260.0-470.0	3750-12500*		375-1250	
322-335.4 399.9-410 608-614	Restricted Bands		200	46.0
960-1240 1300-1427 1435-1626.5 1660-1710 1718.9-1722.2 2200-2300	Restricted Bands		500	54.0

\* Linear interpolation, formula:  $E = -7083 + 41.67 * f(\text{MHz})$

\*\* Measure up to tenth harmonic; 120 kHz BW up to 1 GHz, 1 MHz BW above 1 GHz

#### 4.3 Conducted Emissions Limits

The conductive emission limits and tests do not apply here, since the DUT is powered by a 3 VDC battery.

### 5. Radiated Emission Tests and Results

#### 5.1 Anechoic Chamber Measurements

To familiarize with the radiated emission behavior of the DUT, the DUT was first studied and measured in a shielded anechoic chamber. In the chamber there is a set-up similar to that of an outdoor 3-meter site, with a turntable, an antenna mast, and a ground plane. Instrumentation includes spectrum analyzers and other equipment as needed.

In testing for radiated emissions, the transmitter was activated using the lock/unlock button with a special wooden clamp for repeated pulse emissions. It was placed on the test table flat, on its side, or on its end.

In the chamber we studied and recorded all the emissions using a Bicone antenna up to 300 MHz and a ridged horn antenna above 200 MHz. The measurements made in the chamber below 1 GHz are used for pre-test evaluation only. The measurements made above 1 GHz are used in pre-test evaluation and in the final compliance assessment. We note that for the horn antenna, the antenna pattern is more directive and hence the measurement is essentially that of free space (no ground reflection). Consequently it is not essential to measure the DUT for both antenna polarizations, as long as the DUT is measured on all three of its major axis. In the chamber we also recorded the spectrum and modulation characteristics of the carrier. These data are presented in subsequent sections. We also note that in scanning from 30 MHz to 4.5 GHz using Bicone and the ridge horn antennas, there were no other significant spurious emissions observed.

## 5.2 Open Site Radiated Emission Tests

After the chamber measurements, the emissions were re-measured on the outdoor 3-meter site at fundamental and harmonics up to 1 GHz using tuned dipoles and/or the high frequency Bicone. Photographs included in this filing show the DUT on the Open Area Test Site (OATS).

## 5.3 Computations and Results for Radiated Emissions

To convert the dBm's measured on the spectrum analyzer to dB( $\mu$ V/m), we use expression

$$E_3(\text{dB}\mu\text{V/m}) = 107 + P_R + K_A - K_G$$

where  $P_R$  = power recorded on spectrum analyzer, dB, measured at 3m  
 $K_A$  = antenna factor, dB/m  
 $K_G$  = pre-amplifier gain, including cable loss, dB

When presenting the data, at each frequency the highest measured emission under all of the possible orientations is given. Computations and results are given in Table 5.1. There we see that the DUT meets the limit by 0.5 dB.

## 5.4 Conducted Emission Tests

These tests do not apply, since the DUT is powered from a 3 VDC battery.

## 6. Other Measurements

### 6.1 Correction For Pulse Operation

When the transmitter is activated by push action, it transmits AM modulated Manchester encoded 315 MHz carrier, as long as the button is depressed (up to 25 seconds). The on time is 235  $\mu$ s per 430  $\mu$ s, with an overall word length of 48.3 ms, and repetition period of 127.5 ms. See Figure 6.1. Thus, the duty factor is

$$K_E = (235 \mu\text{s} / 430 \mu\text{s}) \times (48.3 \text{ ms} / 100 \text{ ms}) = 0.264 \text{ or } -11.6 \text{ dB.}$$

### 6.2 Emission Spectrum

Using the ridge-horn antenna and DUT placed in its aperture, emission spectrum was recorded and is shown in Figure 6.2.

### 6.3 Bandwidth of the Emission Spectrum

The measured spectrum of the signal is shown in Figure 6.3. The allowed (-20 dB) bandwidth is 0.25% of MHz, or 787.25 KHz. From the plot we see that the -20 dB bandwidth is 180.0 kHz, and the center frequency is 314.97 MHz.

### 6.4 Effect of Supply Voltage Variation

The DUT has been designed to be powered by 3 VDC battery. For this test, the battery was replaced by a laboratory variable power supply. Relative power radiated was measured at the fundamental as the voltage was varied from 2 to 4 volts. The emission variation is shown in Figure 6.4.

### 6.5 Input Voltage at Battery Terminals

Batteries:	before testing	$V_{oc} = 3.22 \text{ V}$
	after testing	$V_{oc} = 3.00 \text{ V}$
Ave. current from batteries		$I = 8.0 \text{ mA (pulsed)}$

**Table 5.1 Highest Emissions Measured**

<b>Radiated Emission - RF</b>											Strattec 3,4BTN TX; FCC/IC
#	Freq. MHz	Ant. Used	Ant. Pol.	Pr dBm	Det. Used	Ka dB/m	Kg dB	E3* dBμV/m	E3lim dBμV/m	Pass dB	Comments
1	315.0	Dip	H	-21.2	Pk	18.9	20.0	73.1	75.6	2.5	flat, 3 button Dogde
2	315.0	Dip	V	-24.2	Pk	18.9	20.0	70.1	75.6	5.5	side
3	630.0	Dip	H	-47.3	Pk	25.2	18.2	55.1	55.6	<b>0.5</b>	flat
4	630.0	Dip	V	-60.1	Pk	25.2	18.2	42.3	55.6	13.3	side
5	945.0	Dip	H	-64.8	Pk	28.9	16.0	43.5	55.6	12.1	flat
6	945.0	Dip	V	-62.8	Pk	28.9	16.0	45.5	55.6	10.1	end
7	1260.0	Horn	H	-40.5	Pk	20.6	28.0	47.5	55.6	8.1	side
8	1575.0	Horn	H	-41.2	Pk	21.5	28.0	47.7	54.0	6.3	side
9	1890.0	Horn	H	-53.7	Pk	22.2	28.0	35.9	55.6	19.7	end
10	2205.0	Horn	H	-51.9	Pk	23.0	28.1	38.4	54.0	15.6	end
11	2520.0	Horn	H	-62.0	Pk	23.9	28.3	29.0	55.6	26.6	side
12	2835.0	Horn	H	-49.7	Pk	24.8	28.2	42.3	54.0	11.7	flat
13	3150.0	Horn	H	-51.7	Pk	25.8	27.9	41.6	55.6	14.0	side
14											
15	Other versions, worst case										
16	630.0	Dip	H	-48.1	Pk	25.2	18.2	54.3	55.6	<b>1.3</b>	4 button Chrysler
17											
18	* Includes 11.6 dB duty factor										
19											
20											
21											
22	Digital emissions more than 20 dB below FCC/IC Class B Limit.										
23											
24											
25											
26											
27											

<b>Conducted Emissions</b>							
#	Freq. MHz	Line Side	Det. Used	Vtest dBμV	Vlim dBμV	Pass dB	Comments
	Not applicable						

Meas. 3/23/2005; U of Mich.

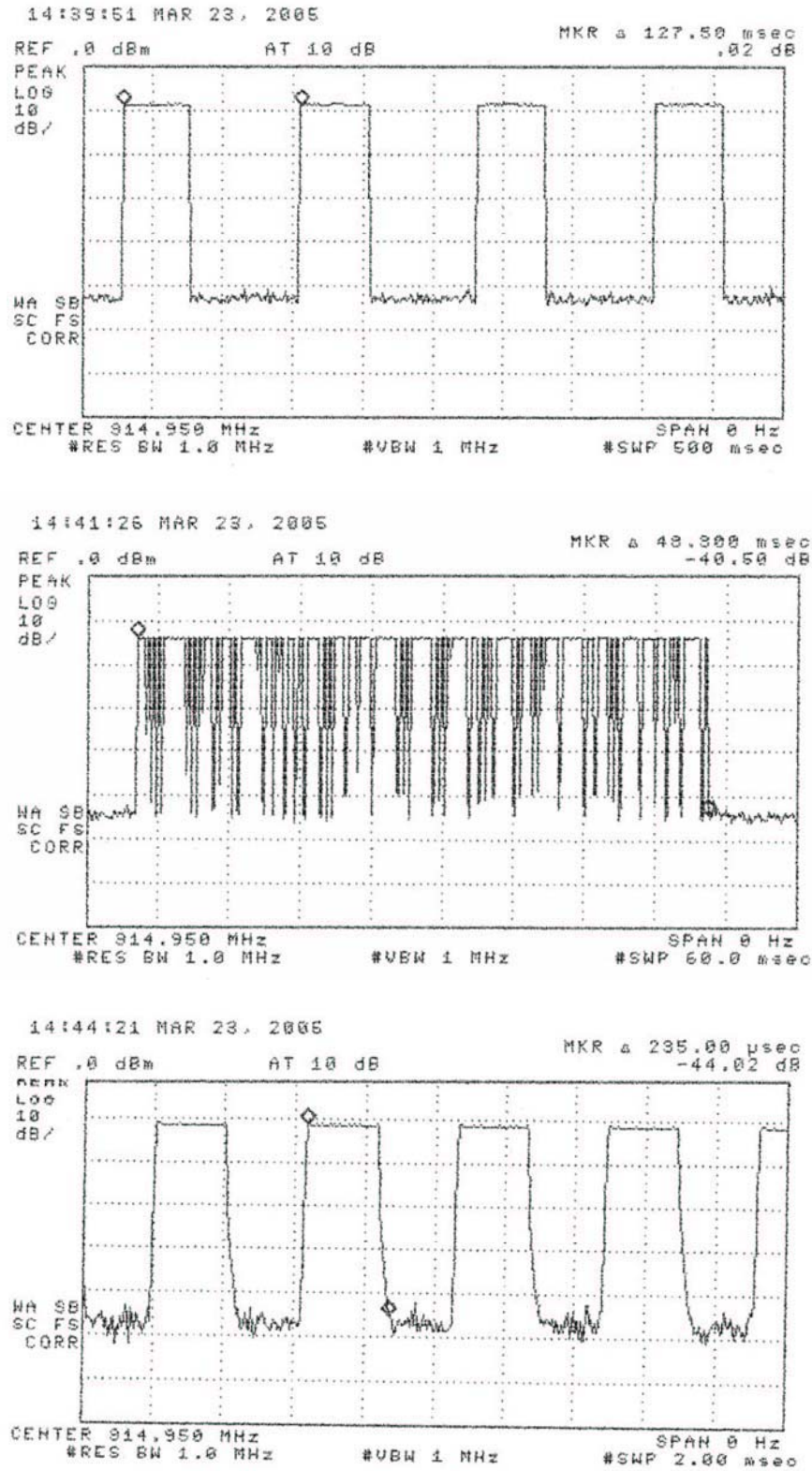


Figure 6.1. Transmissions modulation characteristics: (top) complete transmission, (center) expanded bit, (bottom) expanded period.

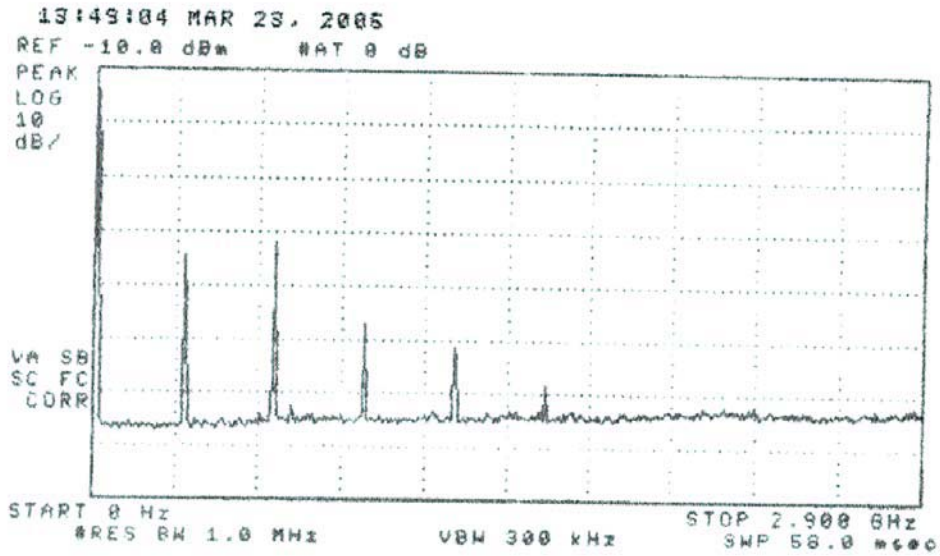


Figure 6.2. Emission spectrum of the DUT (pulsed emission). The amplitudes are only indicative (not calibrated).

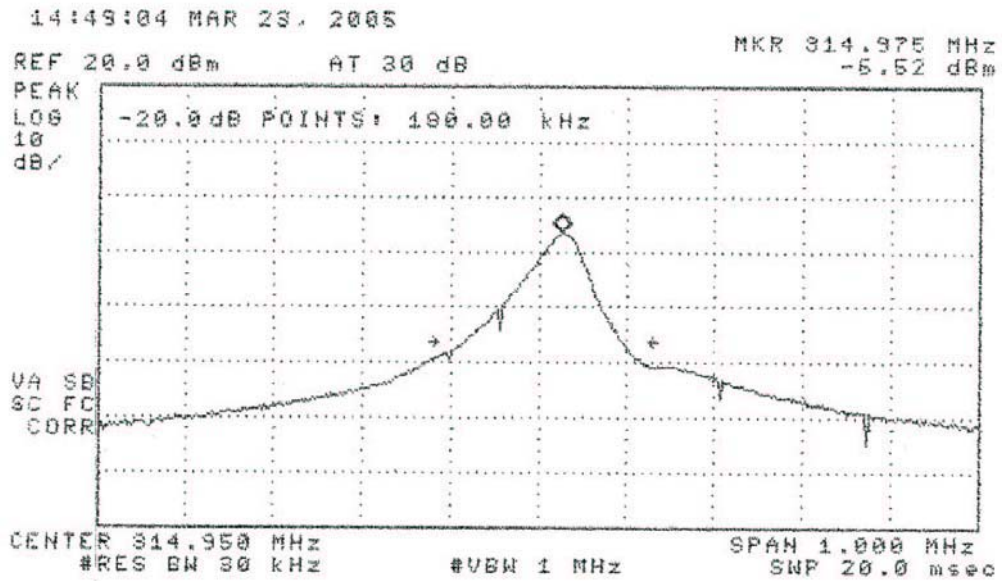


Figure 6.3. Measured bandwidth of the DUT (pulsed emission).



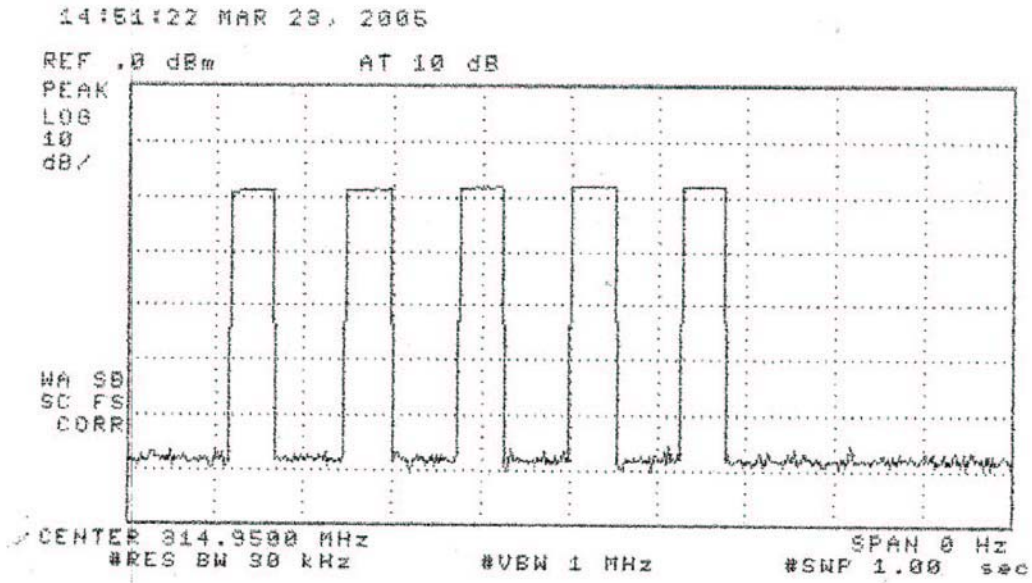


Figure 6.4. Transmitter 5 sec. transmission limit verification

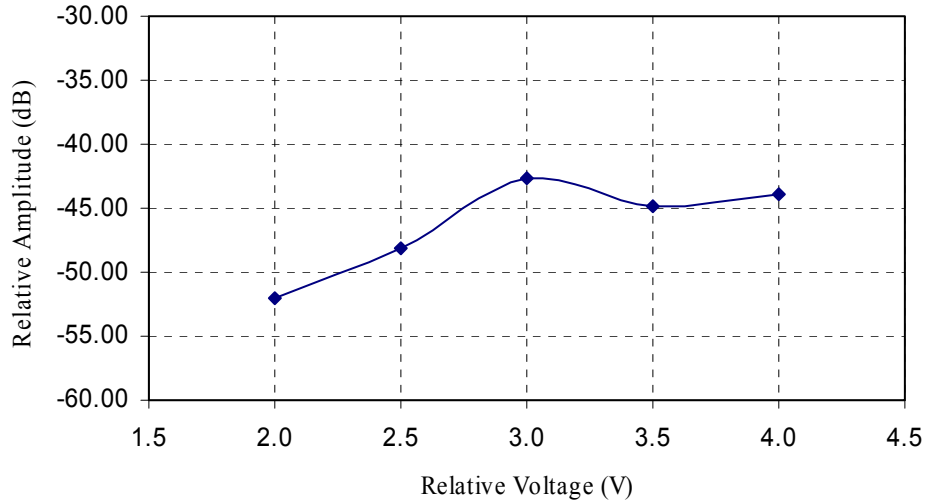


Figure 6.5. Relative emission at 315.0 MHz vs. supply voltage (pulsed emission).

DUT on OATS





DUT on OATS (close-up)

