



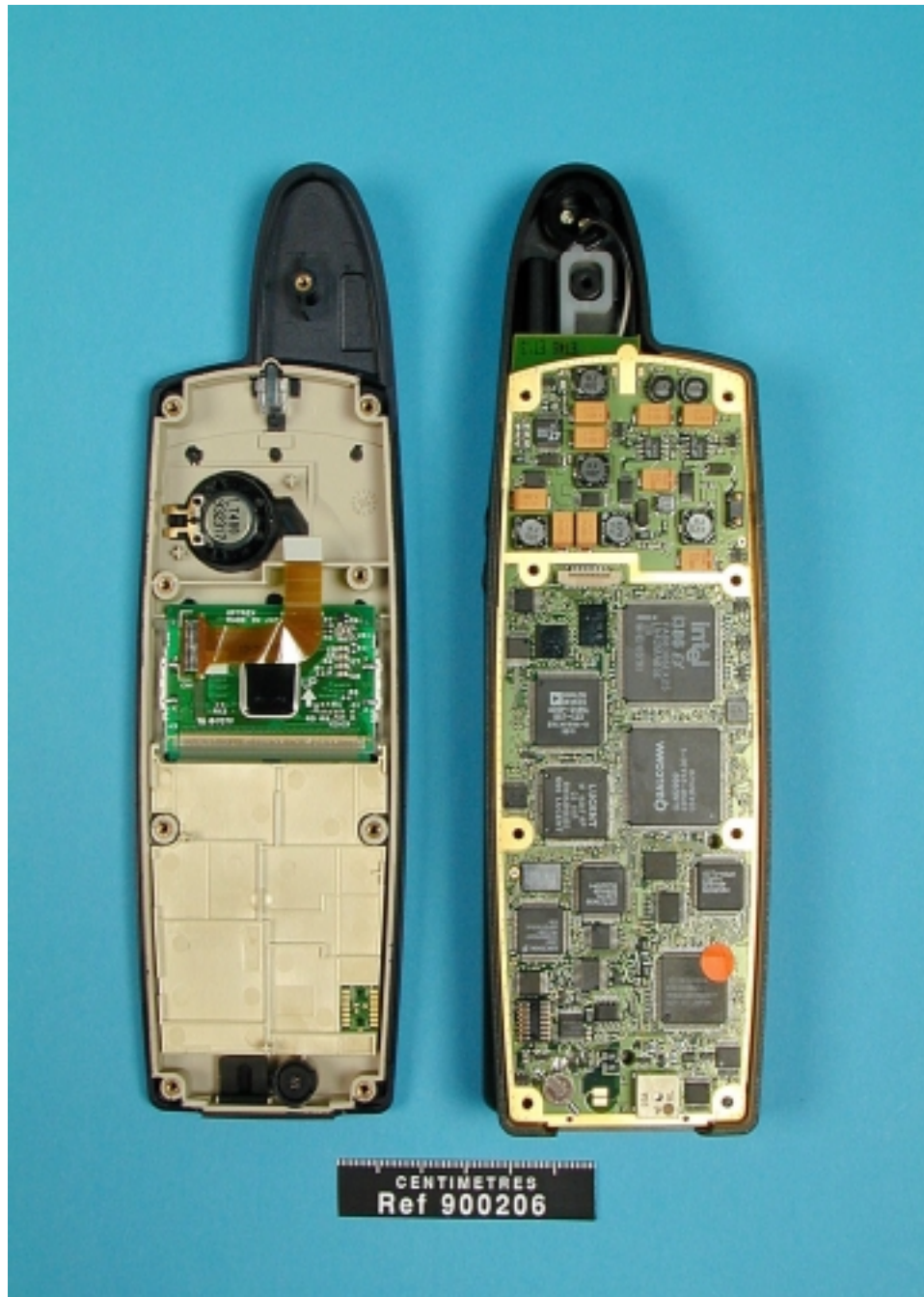
Photograph One: Front view of Ericsson Jekyll submitted for testing with antenna in stored position.



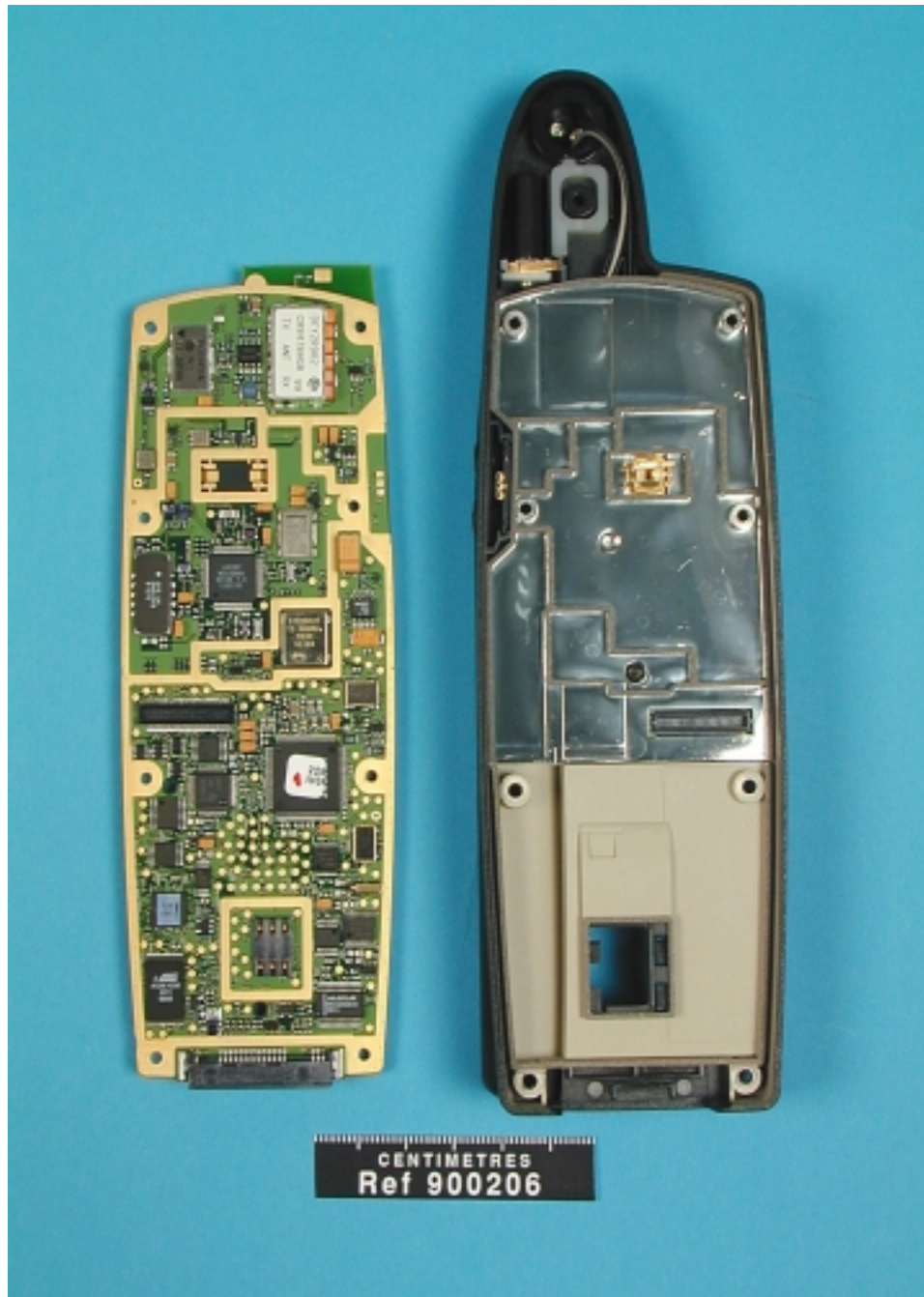
Photograph Two: Rear view of Ericsson Jekyll submitted for testing with antenna in stored position.



Photograph Three: Rear view of Ericsson Jekyll submitted for testing with antenna in deployed position and connector blanking panel removed.



Photograph Four: Ericsson Jekyll with front panel (including keyboard and display) removed showing side 1 of main pcb.



Photograph Five: Underside of main pcb of Ericsson Jekyll showing SIM interface and RF sections.