

Remove R5,
Add C9.

New microcontroller:
PIC16LF84A

Added L1.

Antenna system is now
shorter and includes L2.

New transmitter:
RFM TX5002 L is RFM
internal for initial release.

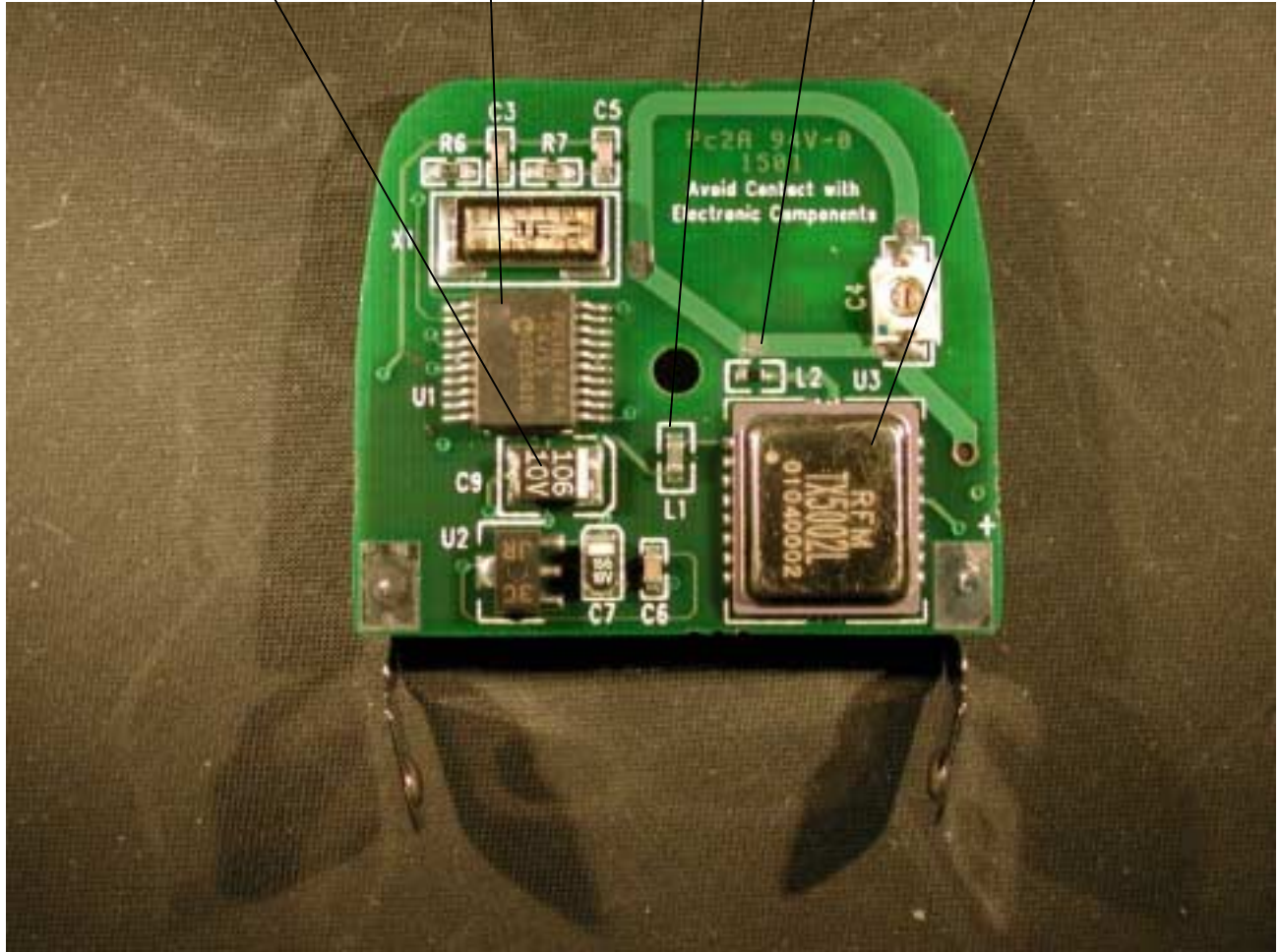


Figure 1 - MMT500 508 Remote Transmitter PCBA - Front

C1 and C8 values changed.

R1 and R2 values changed.

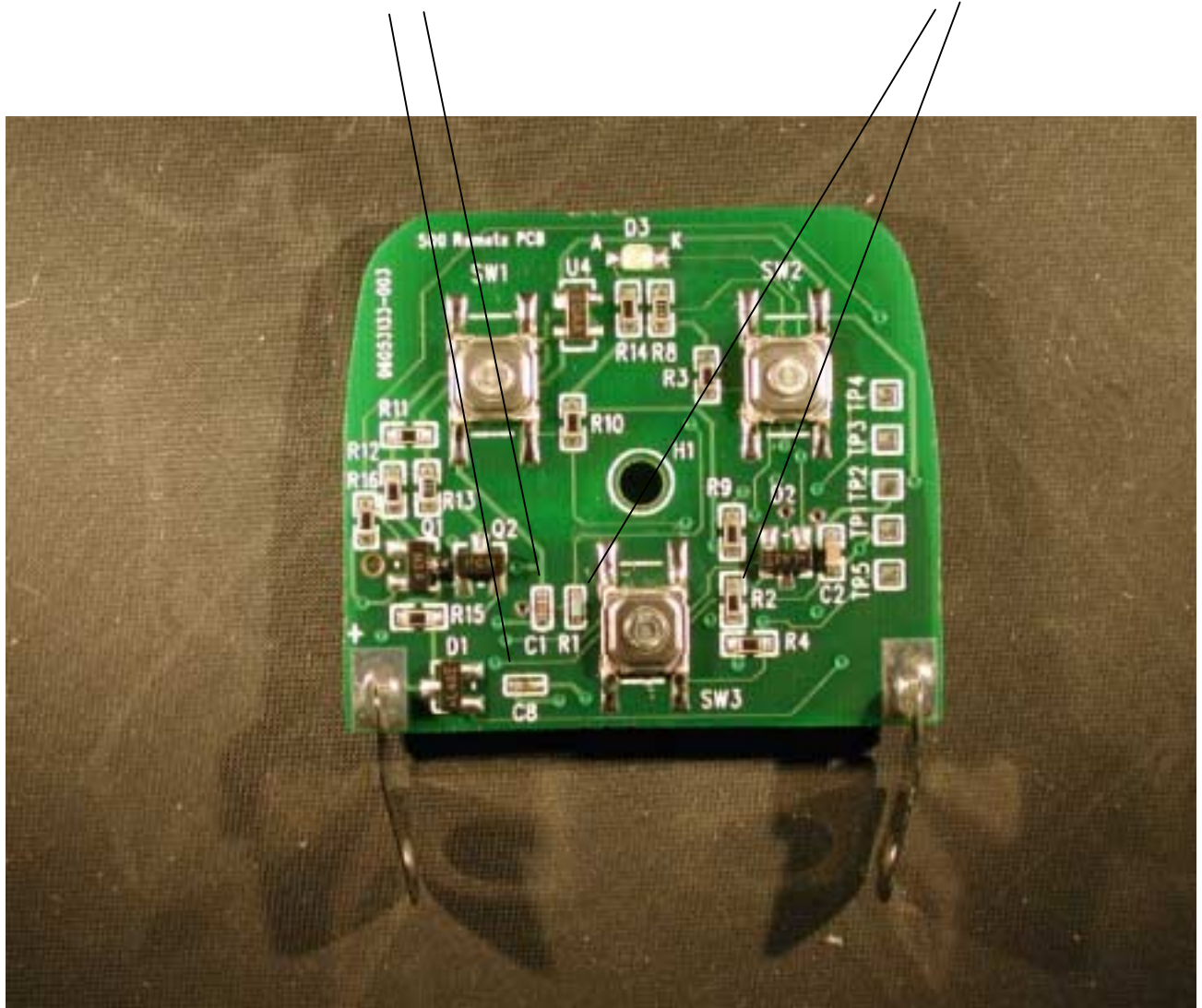


Figure 2 - MMT500 508 Remote Transmitter PCBA - Back

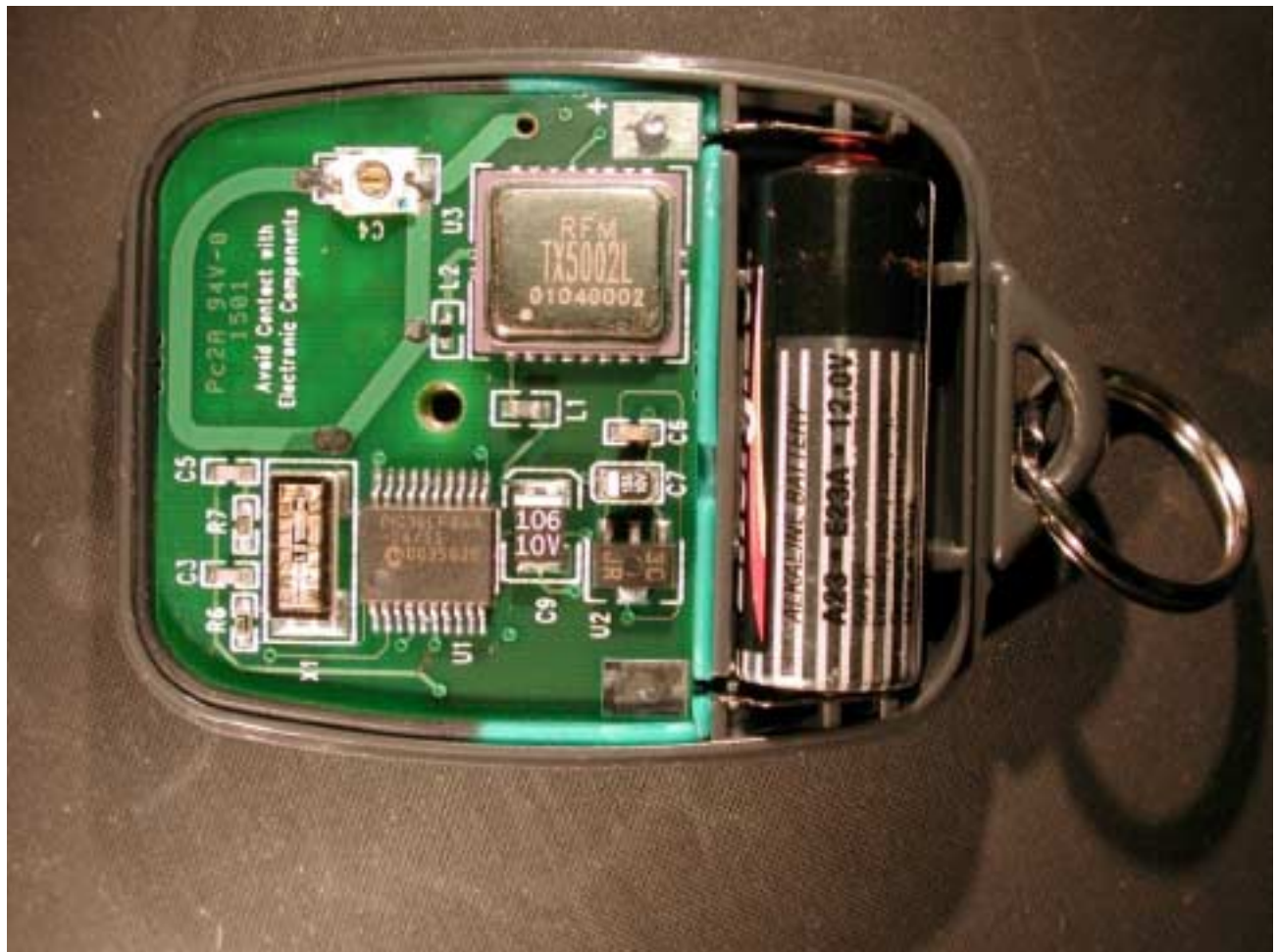


Figure 3 - MMT500 508 Remote Transmitter PCBA in Case

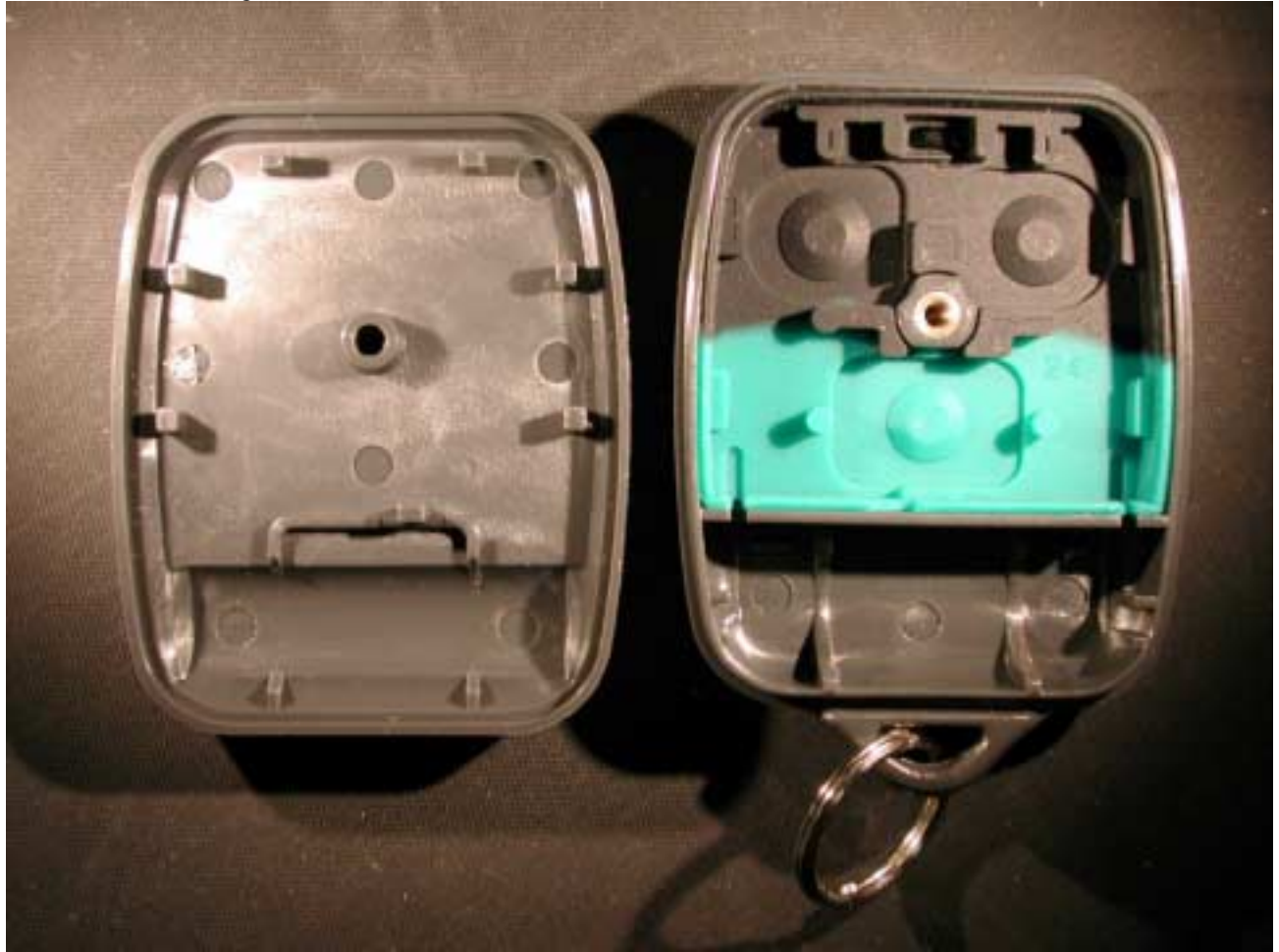


Figure 4 - MMT500 508 Remote Transmitter Case - Inside



Figure 5 - MMT500 508 Remote Transmitter Case - Outside