

**INTERNAL PHOTOGRAPHS OF A
2.4 GHz WLAN ACCESS POINT,
BRAND NOWIRESNEEDED,
TYPE 11 MBPS WLAN ACCESS POINT,
FCC ID OGD 10410208.**

Accredited by	:	STERLAB accreditation number L029 D.A.R., TTI-P-G.127/96-00
Competent body	:	Article 10-2 EMC Directive
Notified body	:	Article 10-5 EMC Directive Low Voltage Directive Number 0122 TTE Directive
Designated laboratory	:	TTE Directive
Notified test service	:	Automotive Directive
FCC listed	:	31040/SIT
VCCI listed	:	R 592 and C 507
Certification body	:	Electrical Products Safety Regulation Hong Kong

Nederlands Meetinstituut

P.O. Box 15
9822 ZG Niekerk (NL)
Smidshornerweg 18
9822 TL Niekerk (NL)

Telephone: +31 594 505005
Telefax: +31 594 504804
E-mail: NMI@NMI.nl

NMI B.V. (Chamber of Commerce Haaglanden No. 27228701)

Offices: Delft, Bergum, Dordrecht, Niekerk, Utrecht,
Tinton Falls NJ (USA), Kawasaki (Japan), Hortolândia SP (Brazil)

Subsidiary companies:

NMI Certin B.V. (27233418)
NMI Van Swinden Laboratorium B.V. (27228703)
NMI International B.V. (27239176)

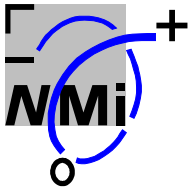
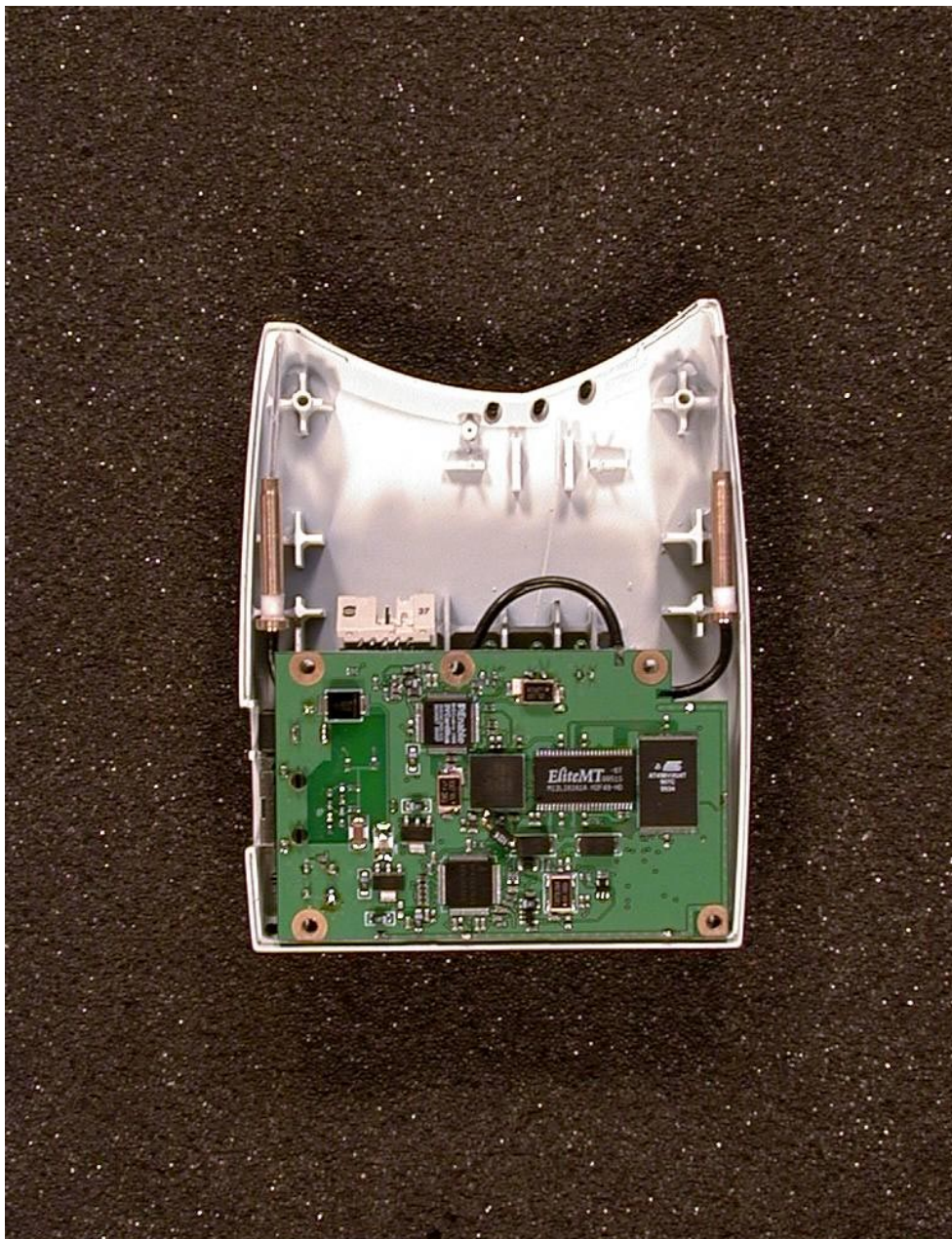


Table of contents

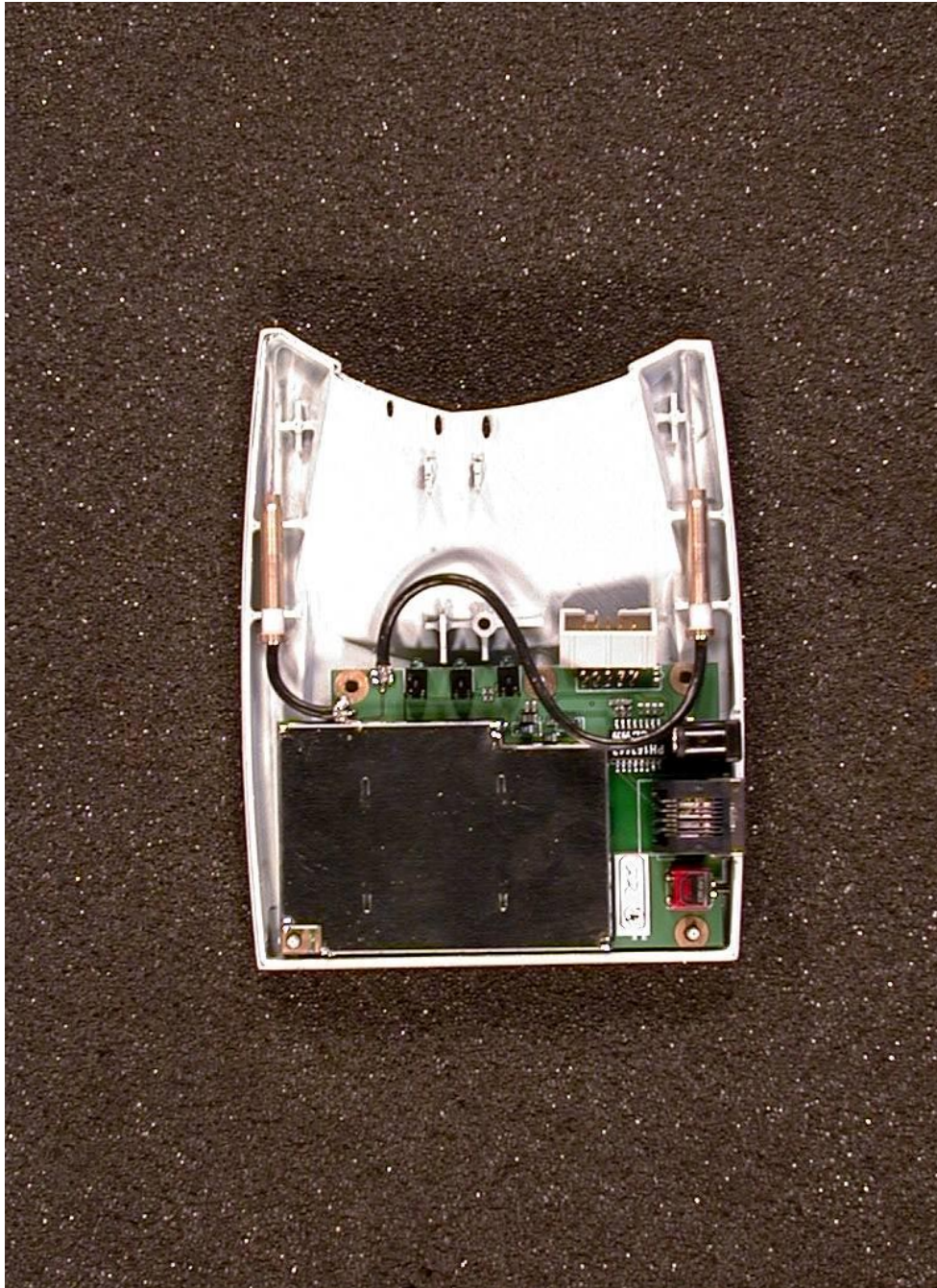
1	Internal Photographs of the test item	3
1.1	<i>Interior overview front.....</i>	3
1.2	<i>Interior overview rear.....</i>	4
1.3	<i>Front PCB.....</i>	5
1.4	<i>Rear PCB with shielding.....</i>	6
1.5	<i>Rear PCB without shielding.....</i>	7

1 Internal Photographs of the test item

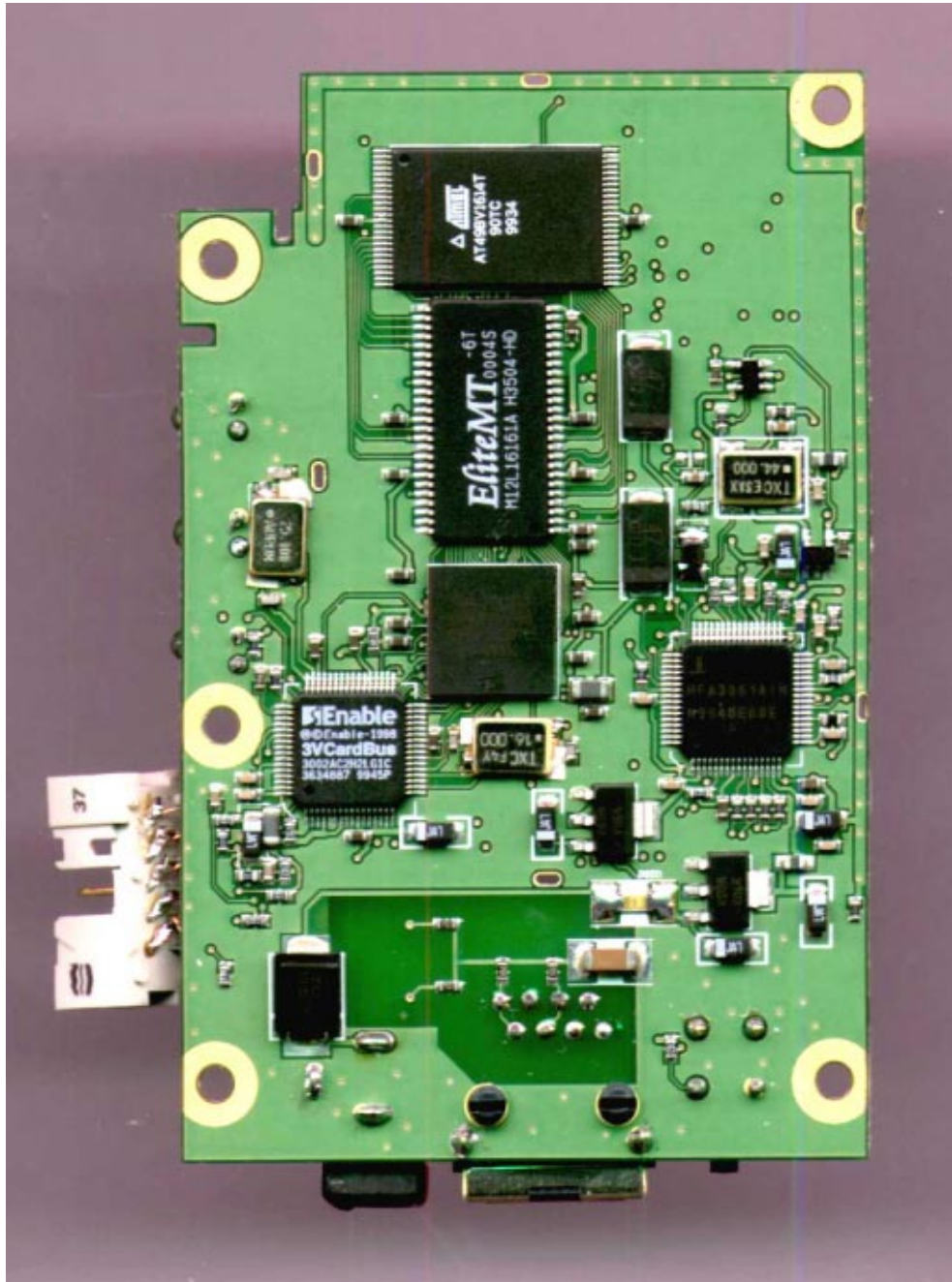
1.1 Interior overview front



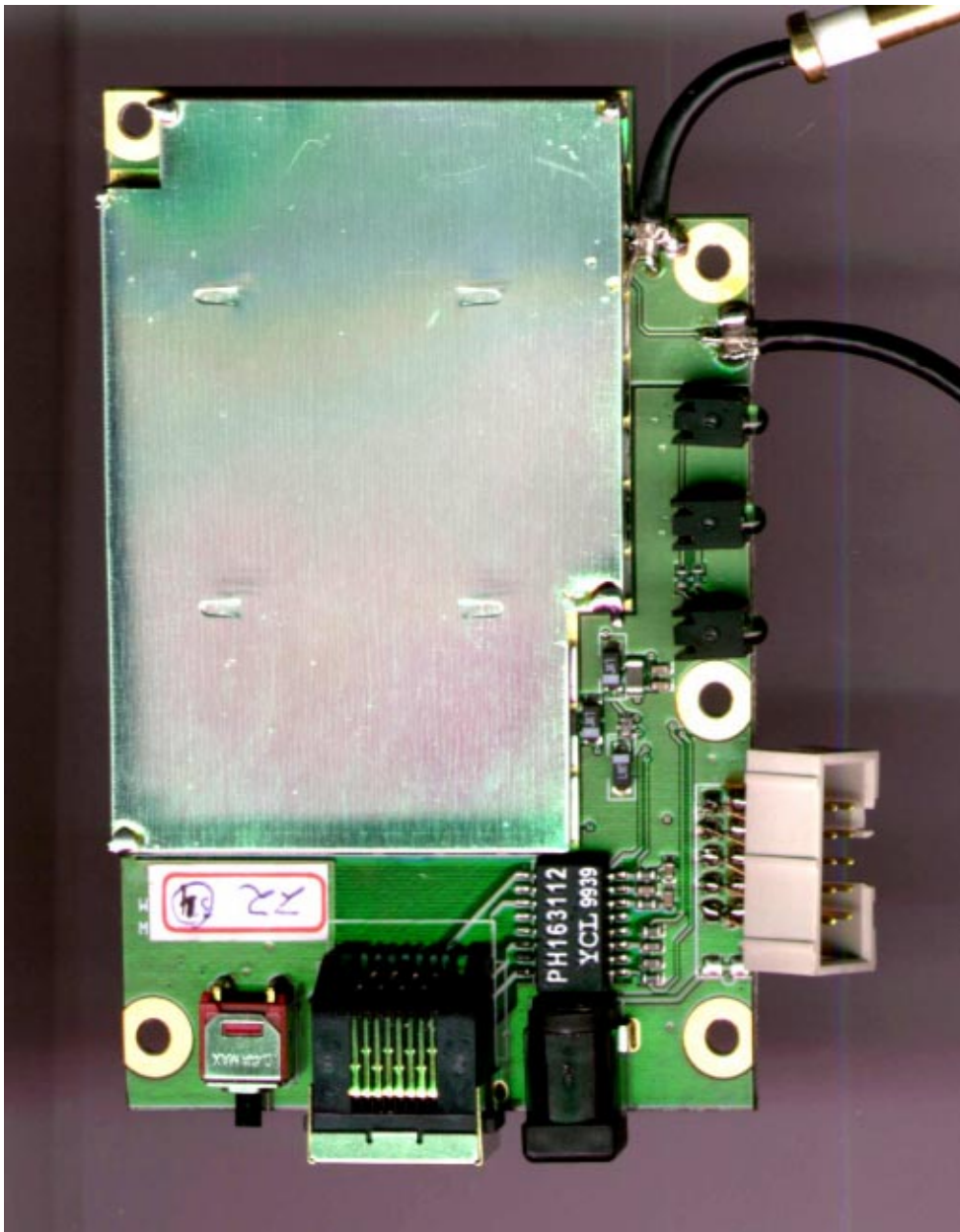
1.2 Interior overview rear



1.3 Front PCB



1.4 Rear PCB with shielding



1.5 Rear PCB without shielding

