

**INTERNAL PHOTOGRAPHS OF 2.4 GHz RLAN  
TRANSCEIVERS, BRAND NO WIRES NEEDED,  
-TYPE PARROT 1100; WIRELESS ACCESS POINT,  
-TYPE PELICAN 1100; WIRELESS STATION ADAPTER,  
-TYPE WB-S1100; WIRELESS BRIDGE SERVER,  
-TYPE WB-C1100; WIRELESS BRIDGE CLIENT**

**FCC ID: OGD 10310308**

<b>Accredited by</b>	<b>:</b>	<b>STERLAB accreditation number L029 D.A.R., TTI-P-G.127/96-00</b>
<b>Competent body</b>	<b>:</b>	<b>Article 10-2 EMC Directive</b>
<b>Notified body</b>	<b>:</b>	<b>Article 10-5 EMC Directive Low Voltage Directive Number 0122 TTE Directive</b>
<b>Designated laboratory</b>	<b>:</b>	<b>TTE Directive</b>
<b>Notified test service</b>	<b>:</b>	<b>Automotive Directive</b>
<b>FCC listed</b>	<b>:</b>	<b>31040/SIT</b>
<b>VCCI listed</b>	<b>:</b>	<b>R 592 and C 507</b>
<b>Certification body</b>	<b>:</b>	<b>Electrical Products Safety Regulation Hong Kong</b>

Nederlands Meetinstituut

P.O. Box 15  
9822 ZG Niekerk (NL)  
Smidshornerweg 18  
9822 TL Niekerk (NL)

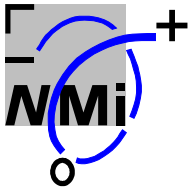
Telephone: +31 594 505005  
Telefax: +31 594 504804  
E-mail: [NMI@NMI.nl](mailto:NMI@NMI.nl)

NMI B.V. (Chamber of Commerce Haaglanden No. 27228701)

Offices: Delft, Bergum, Dordrecht, Niekerk, Utrecht,  
Tinton Falls NJ (USA), Kawasaki (Japan), Hortolândia SP (Brazil)

Subsidiary companies:

NMI Certin B.V. (27233418)  
NMI Van Swinden Laboratorium B.V. (27228703)  
NMI International B.V. (27239176)

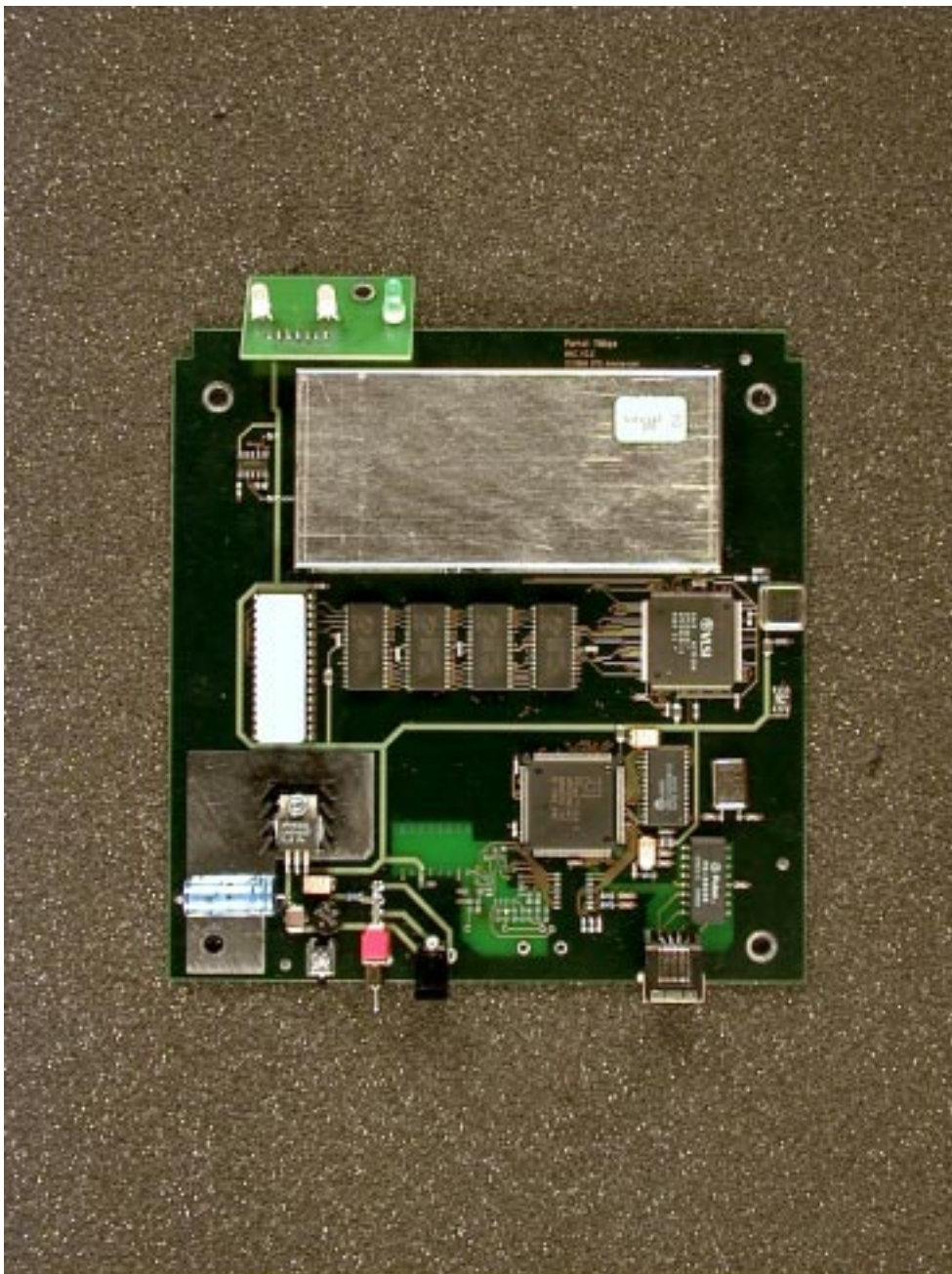


## **Table of contents**

<b>1</b>	<b>Internal photographs of the test item .....</b>	<b>3</b>
1.1	<i>Top view of interior of the equipment .....</i>	<i>3</i>
1.2	<i>Bottom view of interior of the equipment .....</i>	<i>4</i>
1.3	<i>Top view of RF PCB.....</i>	<i>5</i>
1.4	<i>Bottom view of RF PCB.....</i>	<i>6</i>

# 1 Internal photographs of the test item

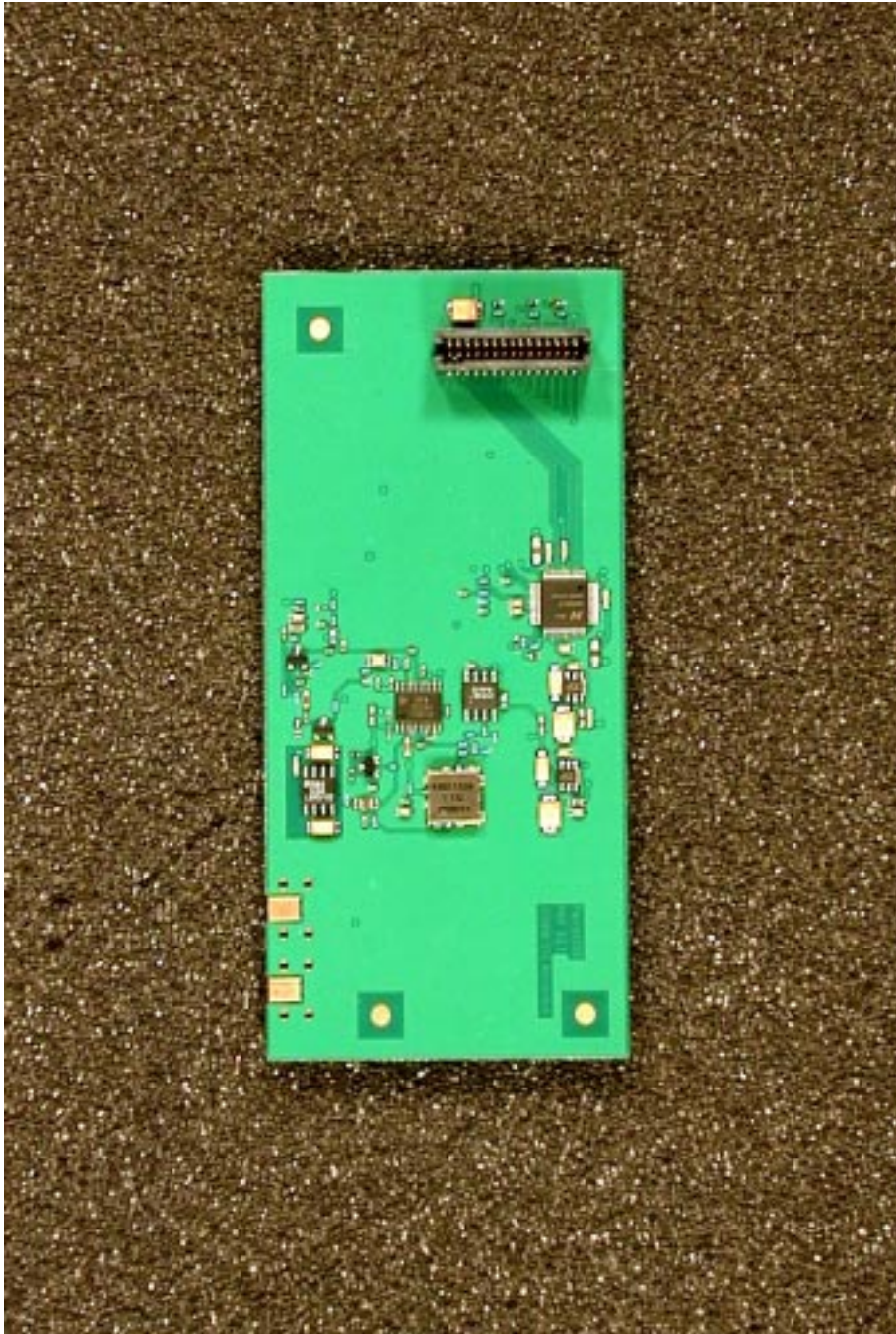
## 1.1 Top view of interior of the equipment



## 1.2 Bottom view of interior of the equipment



### 1.3 Top view of RF PCB



## 1.4 Bottom view of RF PCB

