

Chapter 4 External Photographs

Overview

This section contains external photographs of the FWAN WCS Base Station.

Contents

4.1 External Photographs	4-2
-----------------------------------	-----

4.1 External Photographs

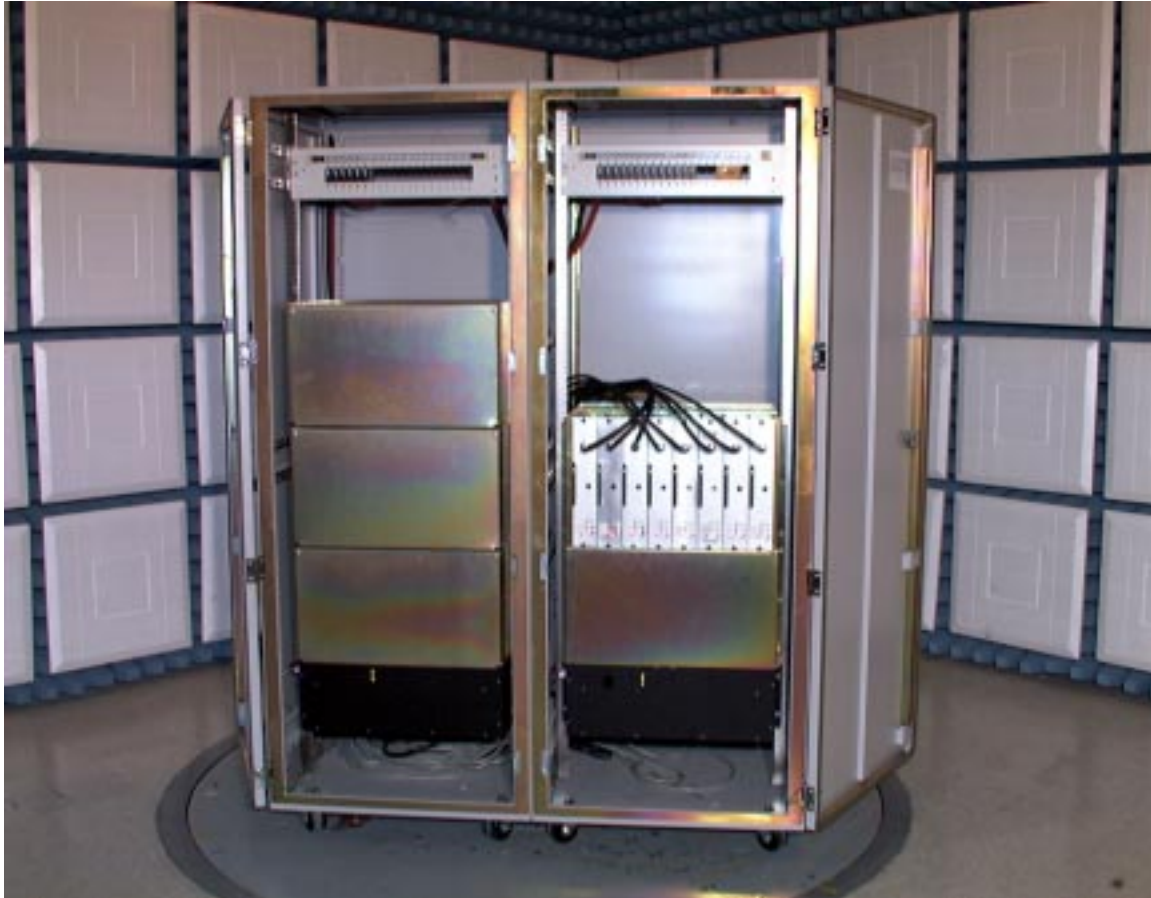
The front view of the FWAN WCS Base Station shows internal access via double doors. The double cabinet may be separated for various installation considerations. There are independent casters for additional mobility.

Figure 4.1 Front Corner View of the FWAN WCS Base Station



The FWAN WCS Base Station, as shown in [Figure 4.2](#), places digital functionality in the left cabinet and the RF functionalities in the right cabinet for separation at various installations. Each cabinet is independently powered with circuit breaker protection and air-moving devices.

Figure 4.2 Open Doors Front View of FWAN WCS Base Station



The interconnecting cabling between the digital and RF cabinets is shown in [Figure 4.3](#).

Figure 4.3 Open Panels Back View of the FWAN WCS Base Station



The back of the FWAN WCS Base Station cabinet contains airflow ventilation as shown in [Figure 4.4](#).

Figure 4.4 Back View of the FWAN WCS Base Station



