

Chapter 4 External Photographs

Overview

This section contains external photographs of the PWAN Base Station.

Contents

4.1	External Photographs	4-28
-----	----------------------------	------

4.1 External Photographs

The front view of the PWAN Base Station shows internal access via double doors. The double cabinet may be separated for various installation considerations with independent casters for additional mobility.

Figure 4.1— Front corner view of the PWAN Base Station



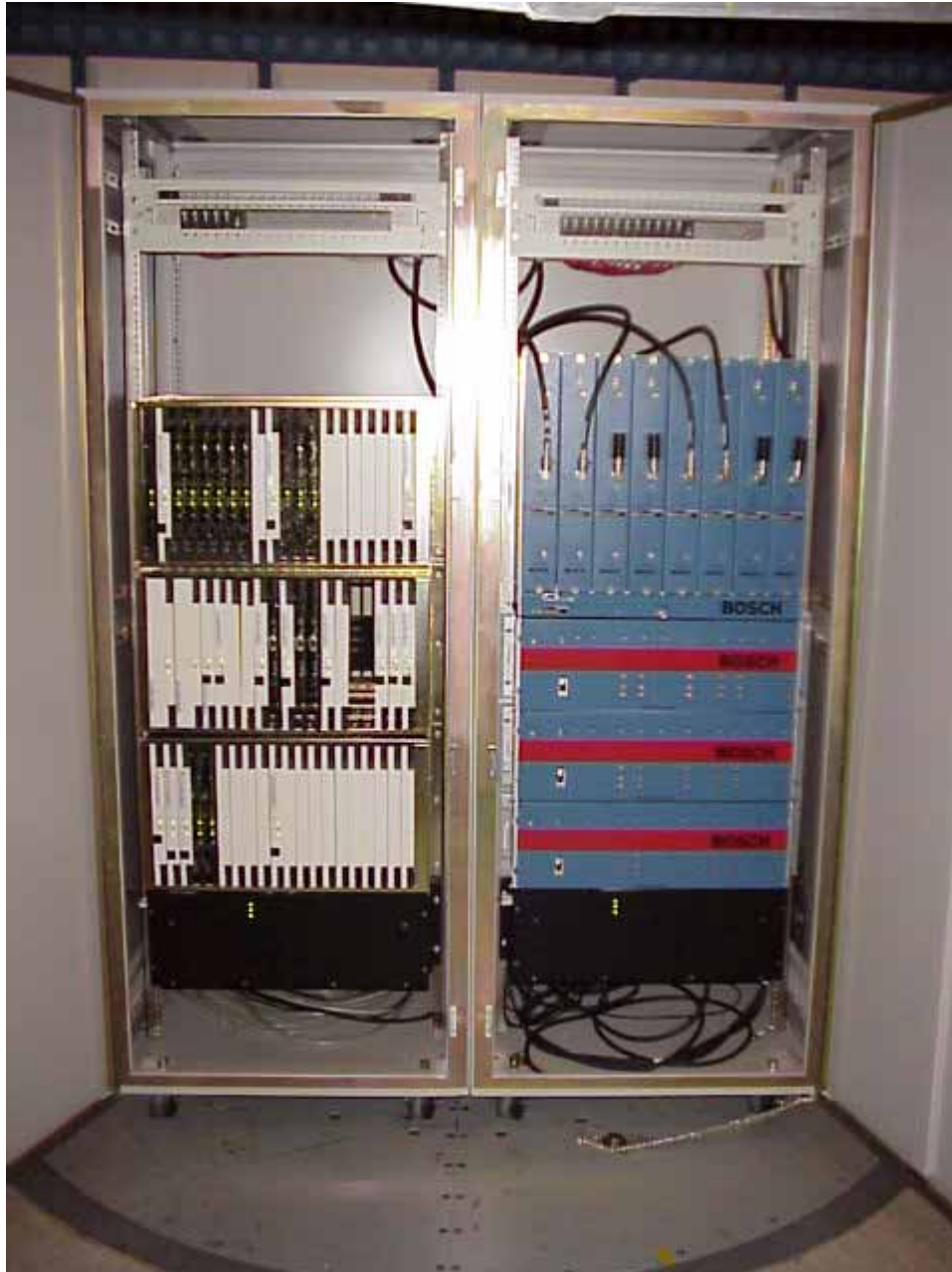
The back of the PWAN Base Cabinet contains airflow ventilation as shown in figure 4.2.

Figure 4.2— Side view of the PWAN Base Cabinet



The PWAN Base Station, as shown in figure 4.3, separates digital functionality to the left and the RF functionalities to the right for separation at various installations. Each cabinet is independently powered with circuit breaker protection and air-moving devices.

Figure 4.3— Open doors front view of PWAN Base Station



The interconnecting cabling between the digital and RF cabinets are shown in figure 4.4.

Figure 4.4— Open panels—Back view of the PWAN Base Station

