

Figure 5.30. FDTD derived H-field of AT&T RU antenna in y-z plane compared to ANSI/IEEE exposure standard (Scan N, 331 mm from ground plane of antenna, maximum magnetic field strength = 0.06461 A/m).

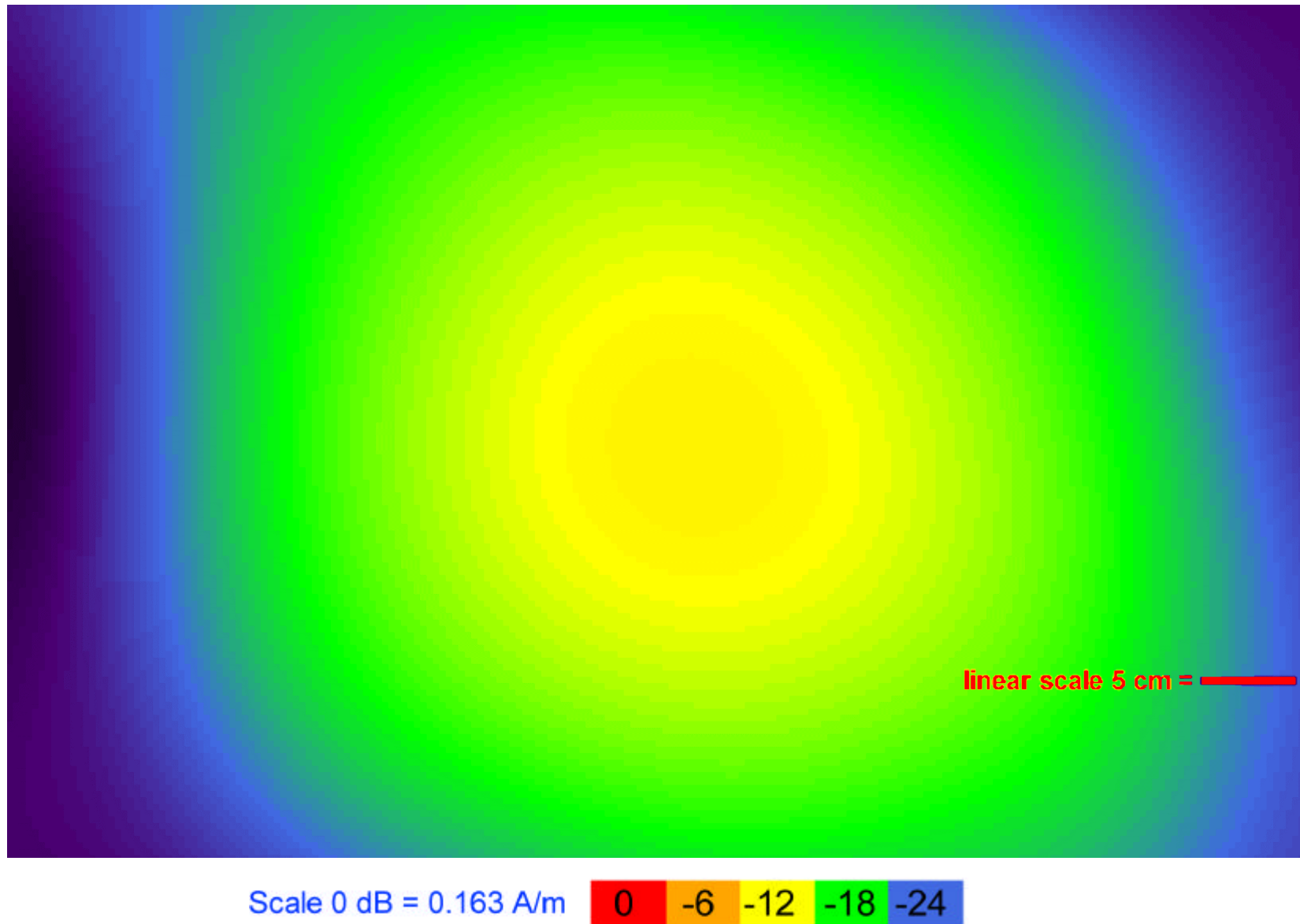


Figure 5.31. FDTD derived H-field of AT&T RU antenna in y-z plane compared to ANSI/IEEE exposure standard (Scan P, 514 mm from ground plane of antenna, maximum magnetic field strength = 0.04496 A/m).

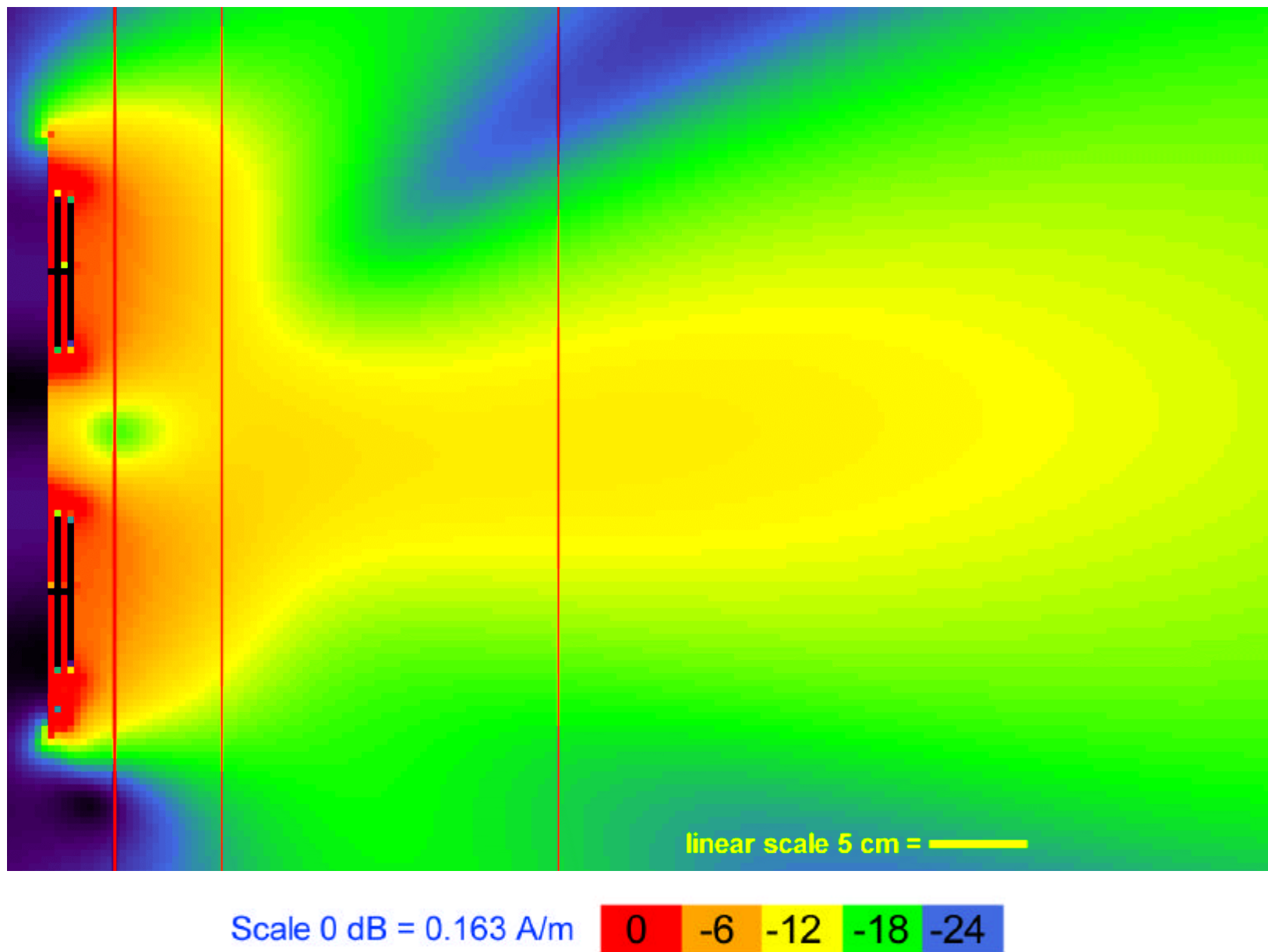


Figure 5.32. FDTD derived H-field of AT&T RU antenna in x-y plane compared to ANSI/IEEE exposure standard (Scan A, horizontal plane through middle of top patches).

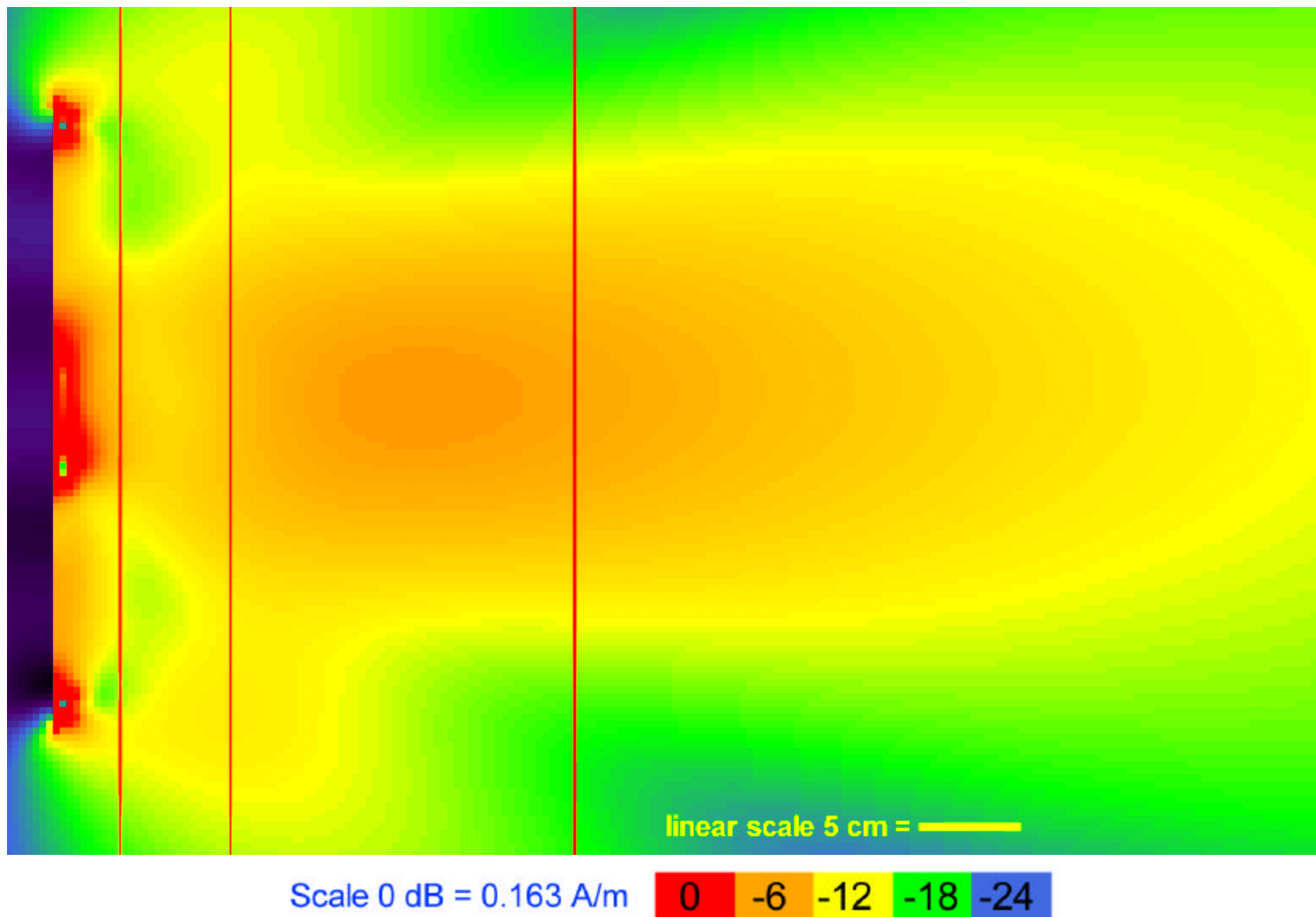


Figure 5.33. FDTD derived H-field of AT&T RU antenna in x-y plane compared to ANSI/IEEE exposure standard (Scan B, horizontal plane through middle of patch array).