

Scale 0 dB = 0.163 A/m    0   -6   -12   -18   -24

Figure 5.26. FDTD derived H-field of AT&T RU antenna in y-z plane compared to ANSI/IEEE exposure standard (Scan I, 79 mm from ground plane of antenna, maximum magnetic field strength = 0.06834 A/m).

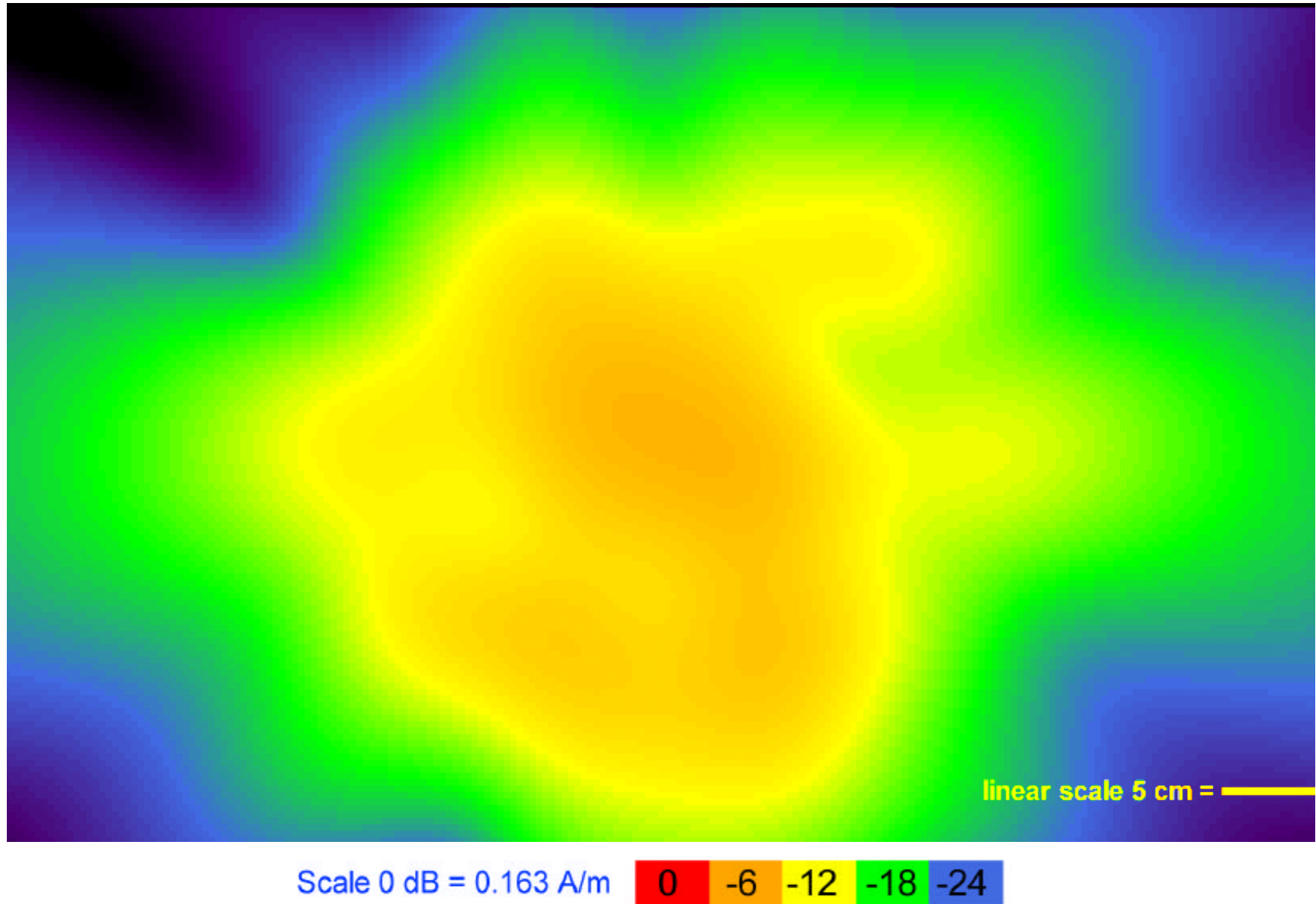


Figure 5.27. FDTD derived H-field of AT&T RU antenna in y-z plane compared to ANSI/IEEE exposure standard (Scan J, 91 mm from ground plane of antenna, maximum magnetic field strength = 0.07081 A/m).

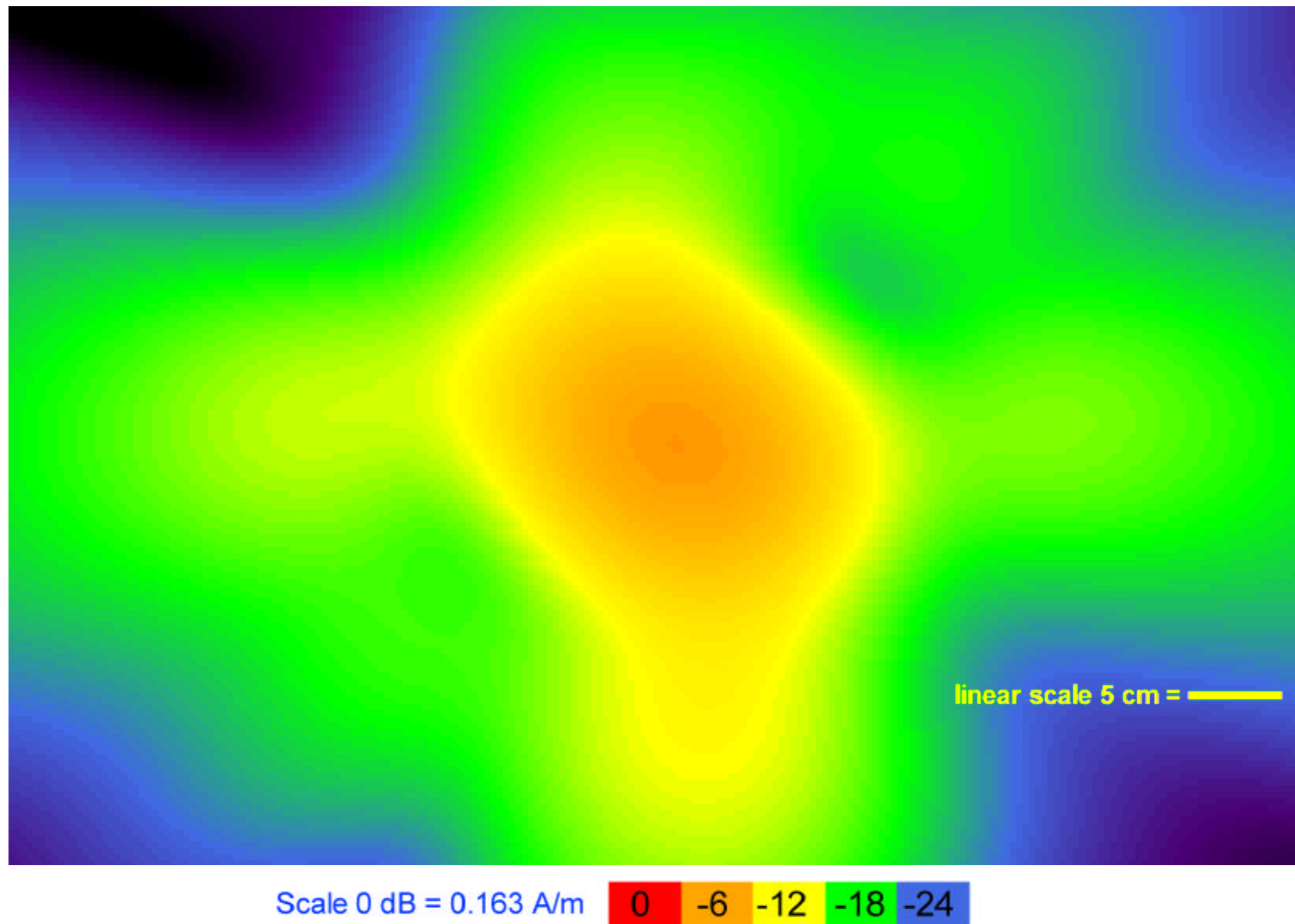


Figure 5.28. FDTD derived H-field of AT&T RU antenna in y-z plane compared to ANSI/IEEE exposure standard (Scan K, 151 mm from ground plane of antenna, maximum magnetic field strength = 0.08600 A/m).

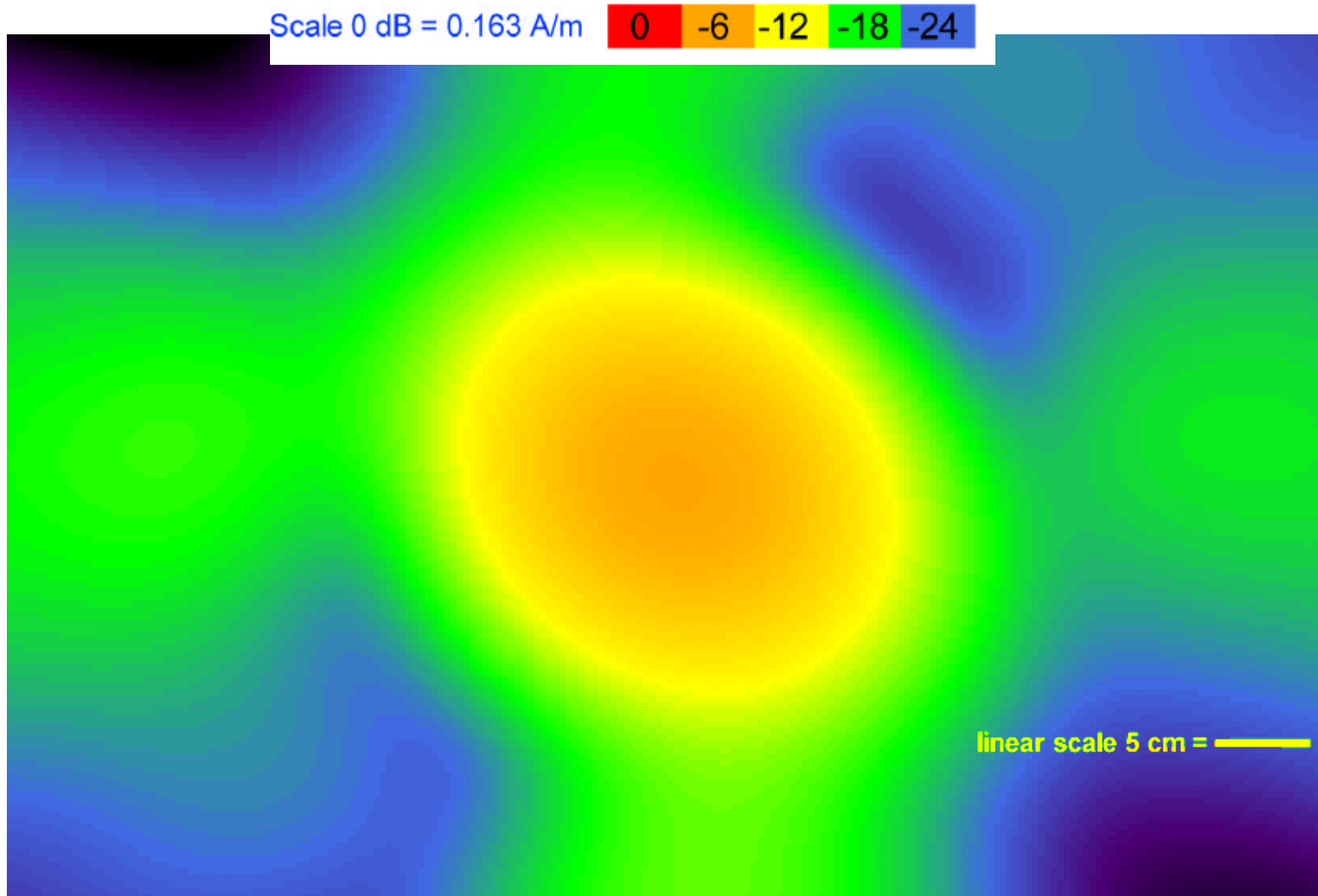


Figure 5.29. FDTD derived H-field of AT&T RU antenna in y-z plane compared to ANSI/IEEE exposure standard (Scan M, 229 mm from ground plane of antenna, maximum magnetic field strength = 0.07986 A/m).