

Figure 5.8. FDTD derived E-field of AT&T RU antenna in y-z plane compared to ANSI/IEEE exposure standard (Scan K, 151 mm from ground plane of antenna, maximum E-field strength =32.55 V/m).

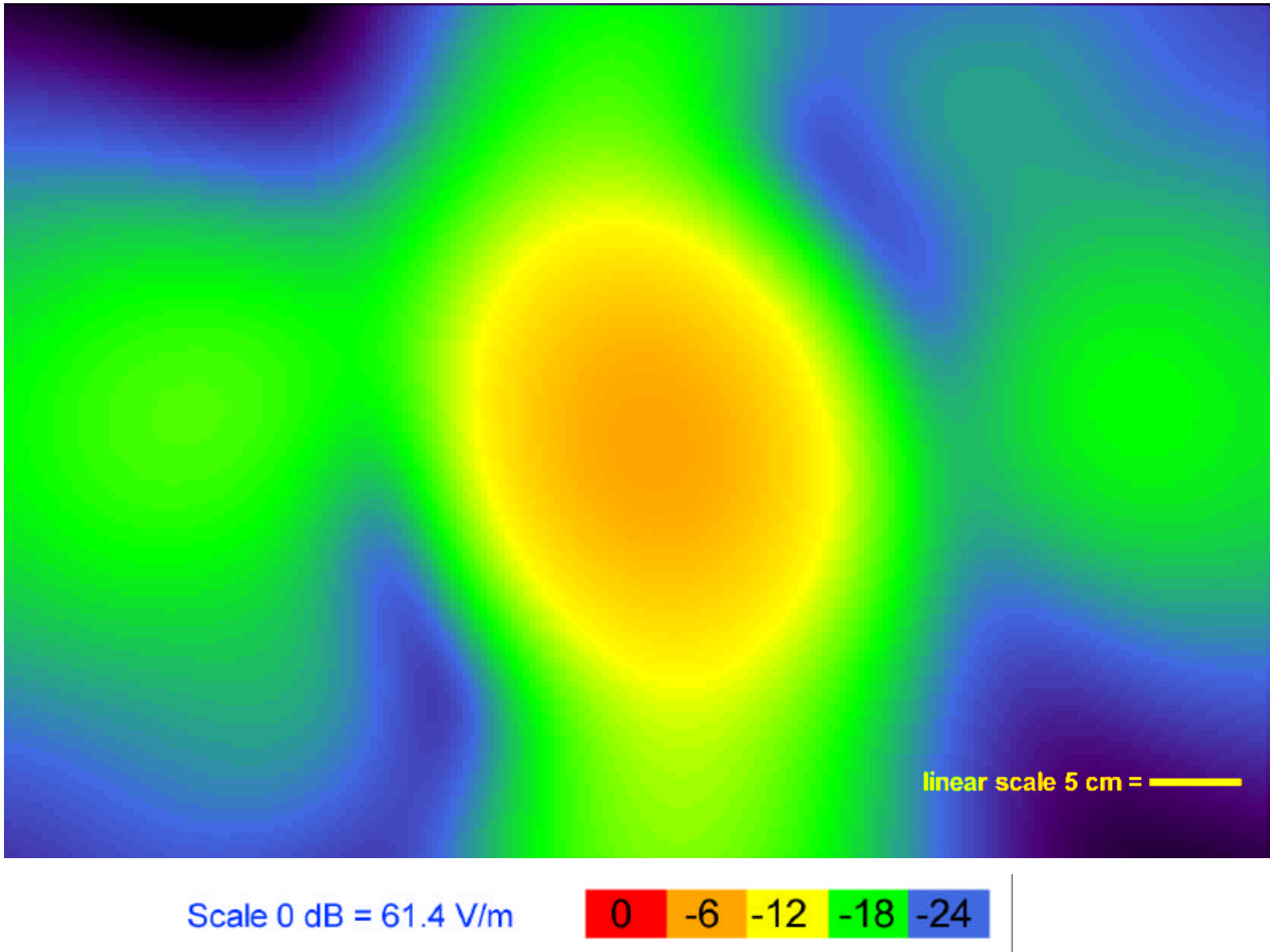


Figure 5.9. FDTD derived E-field of AT&T RU antenna in y-z plane compared to ANSI/IEEE exposure standard (Scan L, 211 mm from ground plane of antenna, maximum E-field strength = 30.80 V/m).

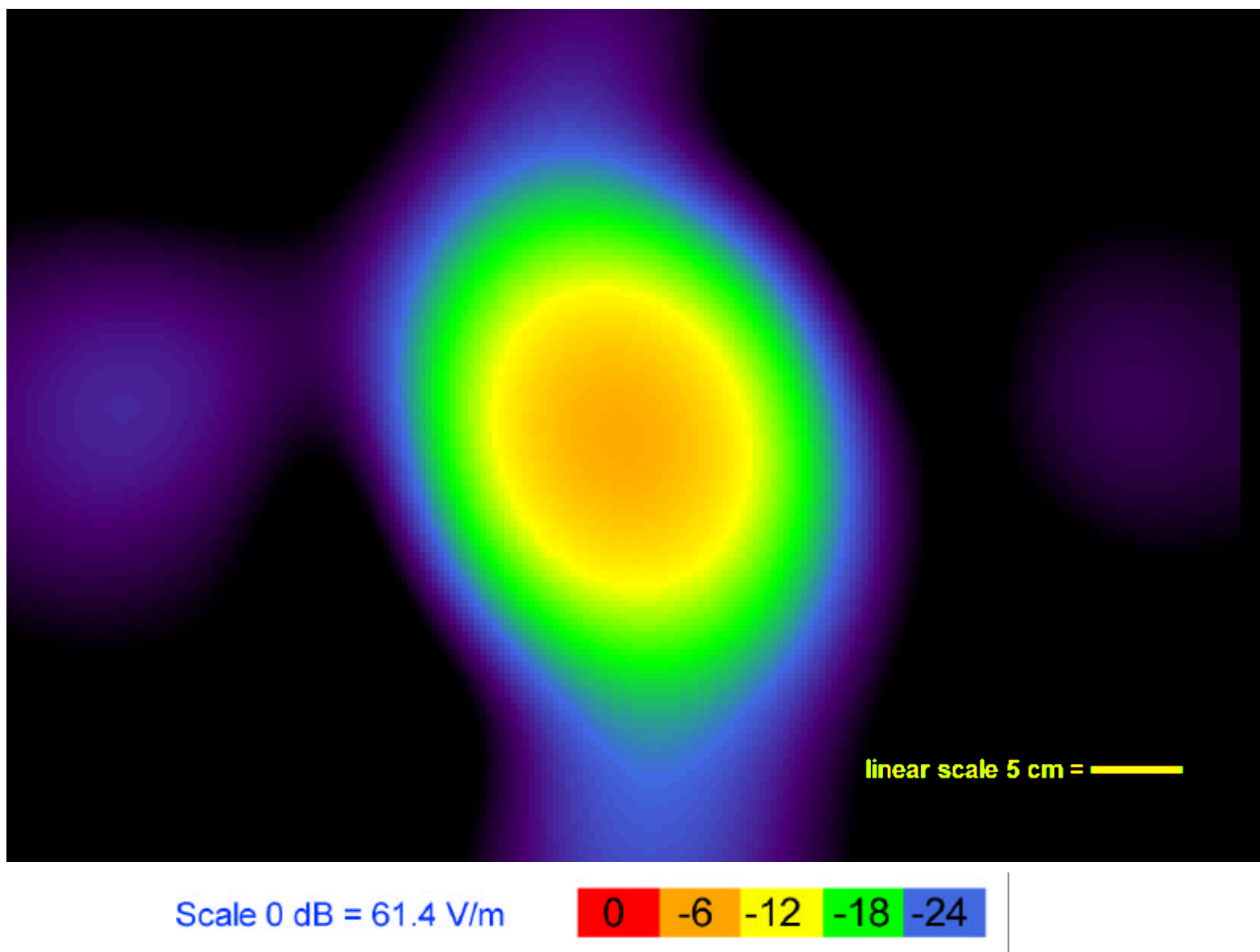


Figure 5.10. FDTD derived E-field of AT&T RU antenna in y-z plane compared to ANSI/IEEE exposure standard (Scan M, 229 mm from ground plane of antenna, maximum E-field strength = 29.89 V/m).