

Figure 5.5. FDTD derived z component of E-field of AT&T RU antenna in y-z plane (Scan H, 40 mm from ground plane of antenna for comparison with measured data).

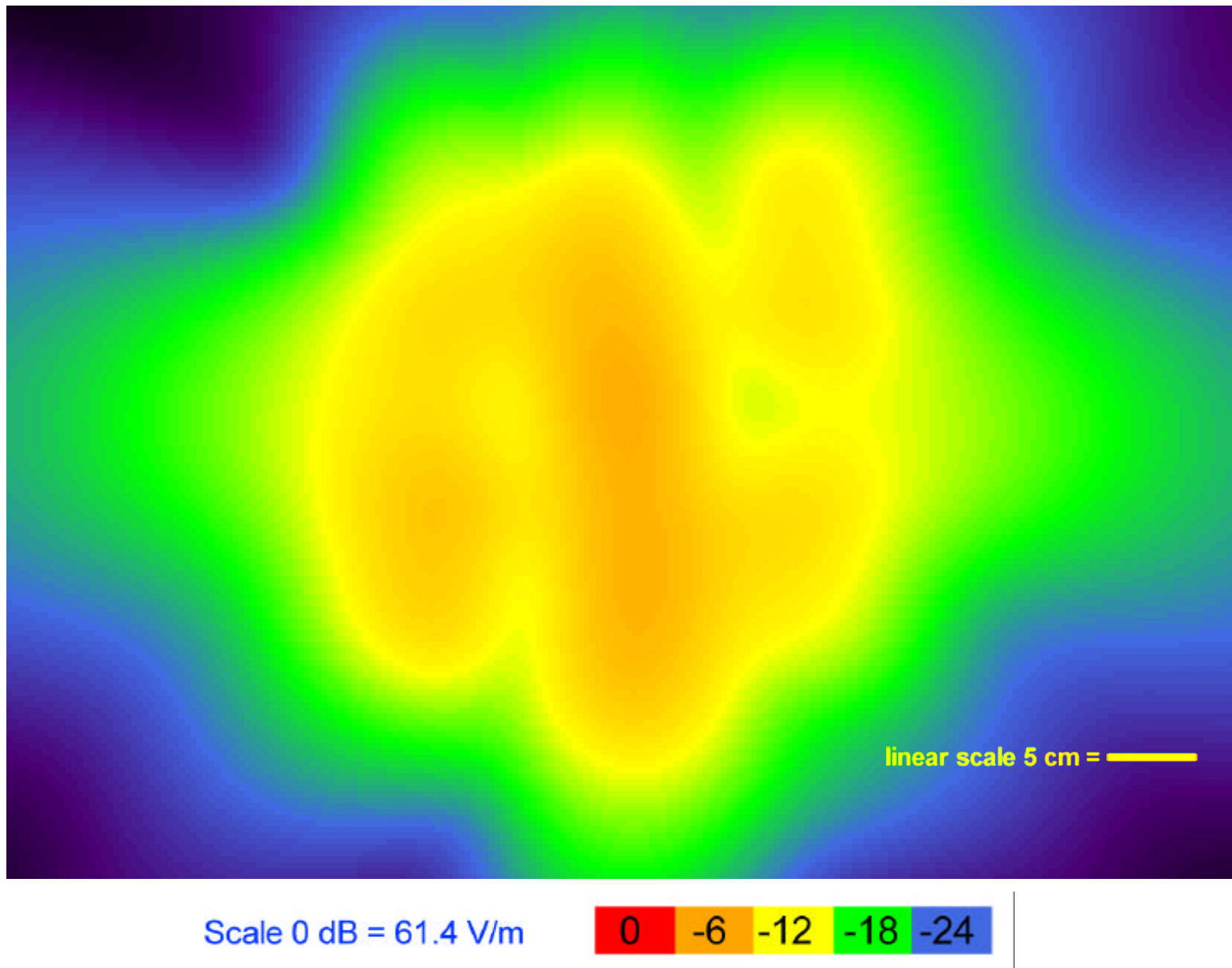
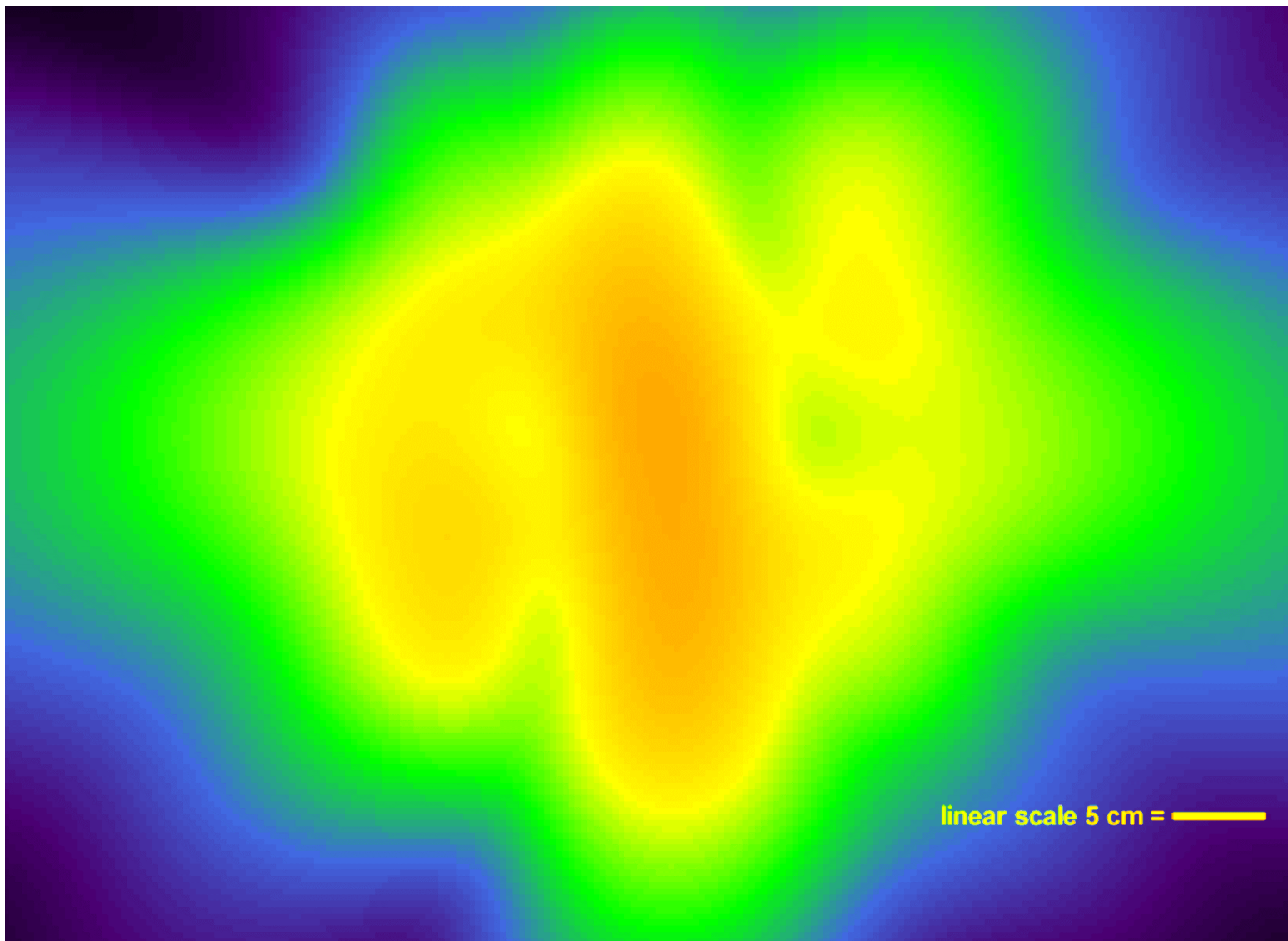


Figure 5.6. FDTD derived E-field of AT&T RU antenna in y-z plane compared to ANSI/IEEE exposure standard (Scan I, 79 mm from ground plane of antenna, maximum E-field strength = 28.2 V/m).



Scale 0 dB = 61.4 V/m

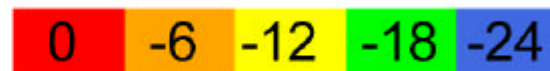


Figure 5.7. FDTD derived E-field of AT&T RU antenna in y-z plane compared to ANSI/IEEE exposure standard (Scan J, 91 mm from ground plane of antenna, maximum E-field strength =29.42 V/m).