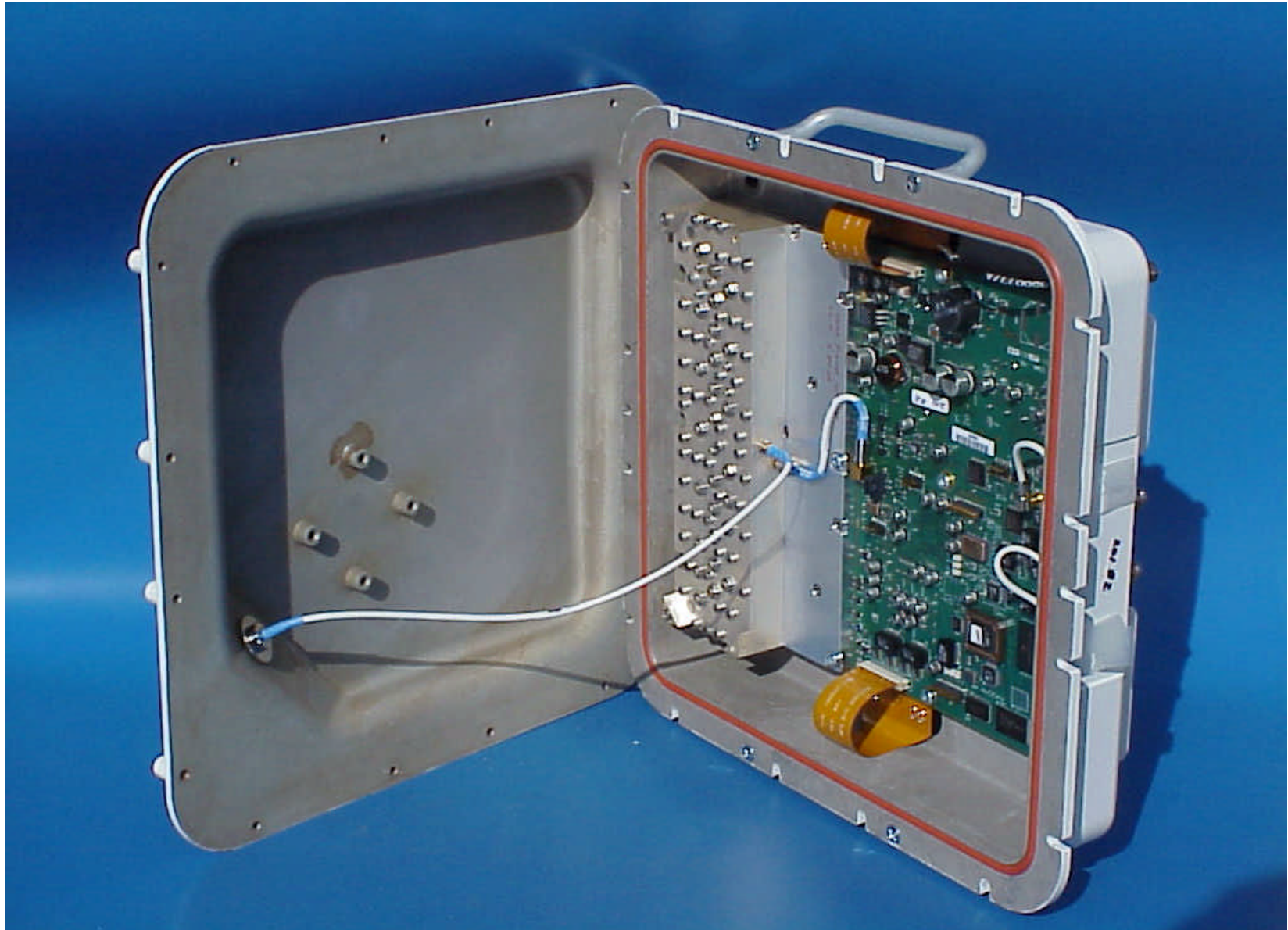
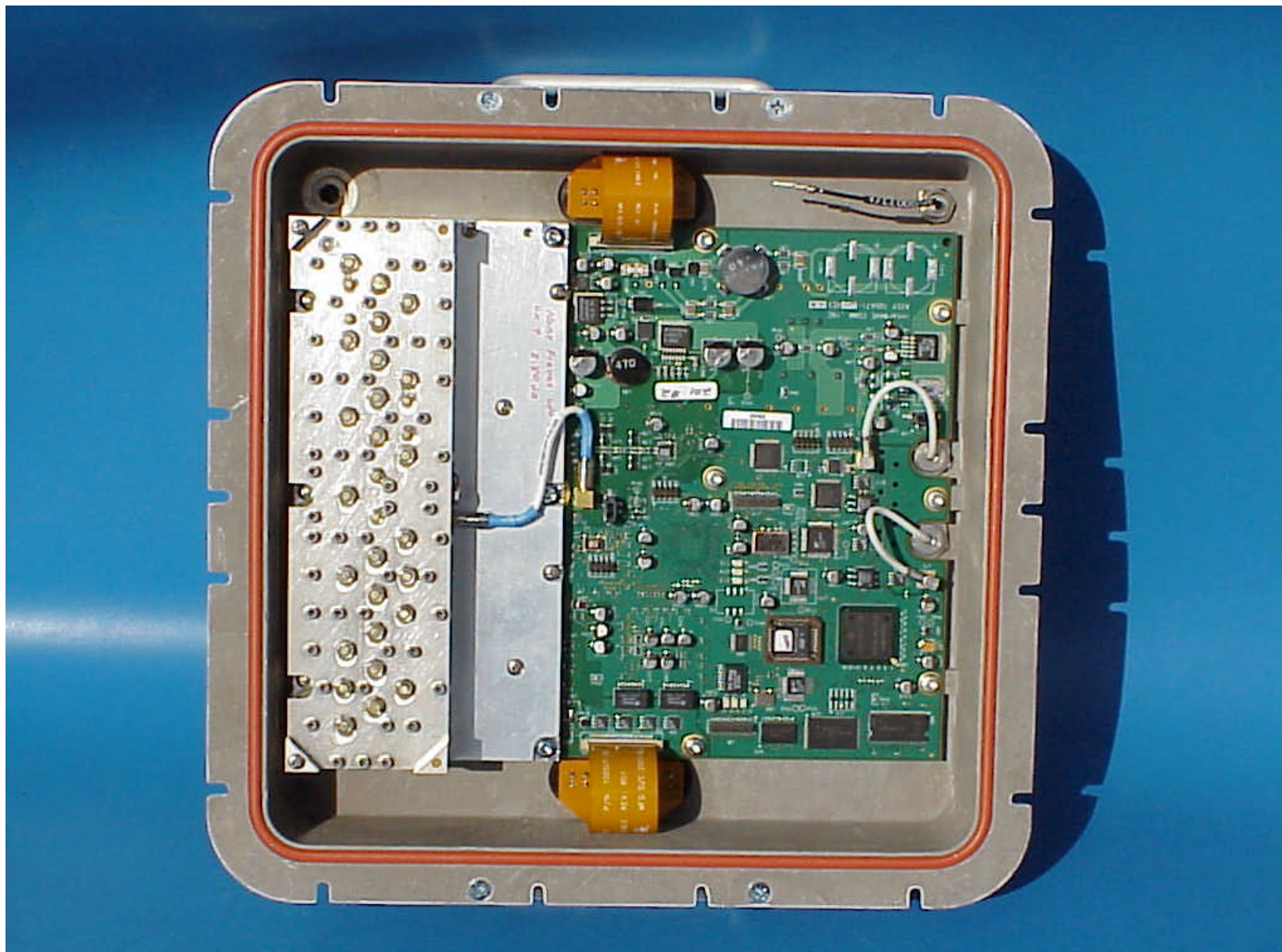


Link CX integral antenna attachment

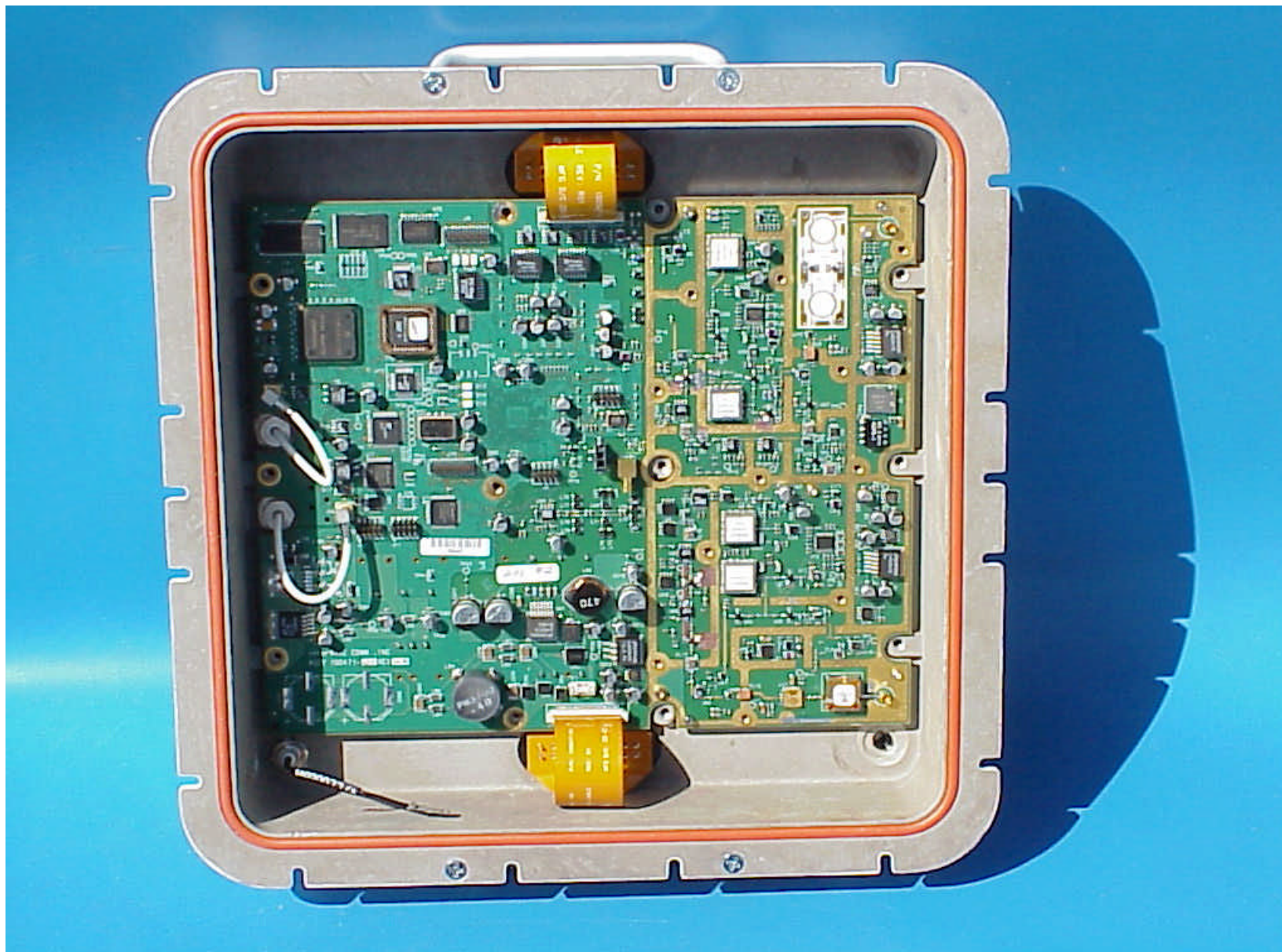


Link CX antenna cable attachment (external antenna configuration, 5.8 GHz versions only)



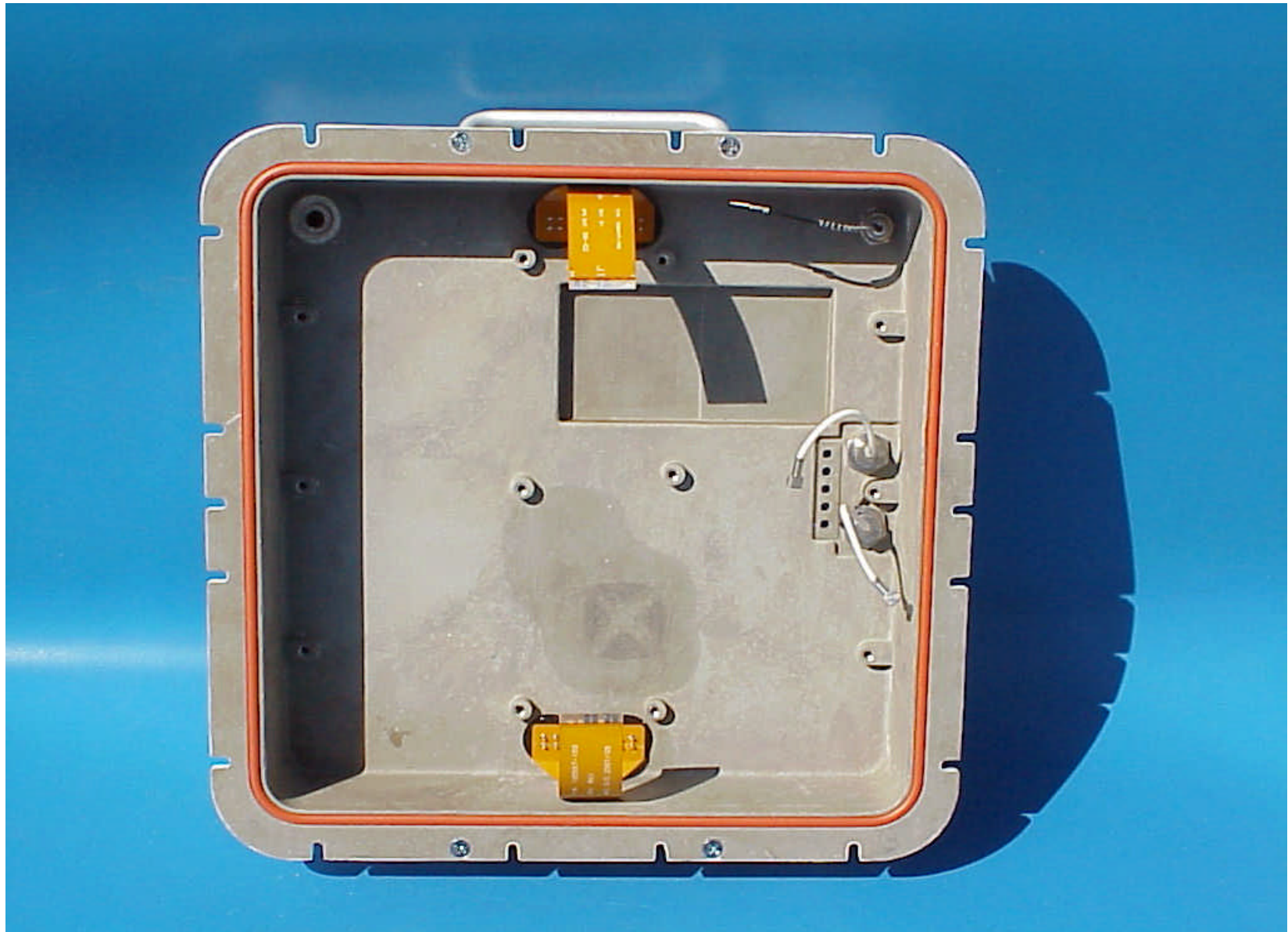


Link CX view of PCB in enclosure with shields and duplexer



Link CX view of PCB in enclosure without shields





Link CX view of enclosure bottom

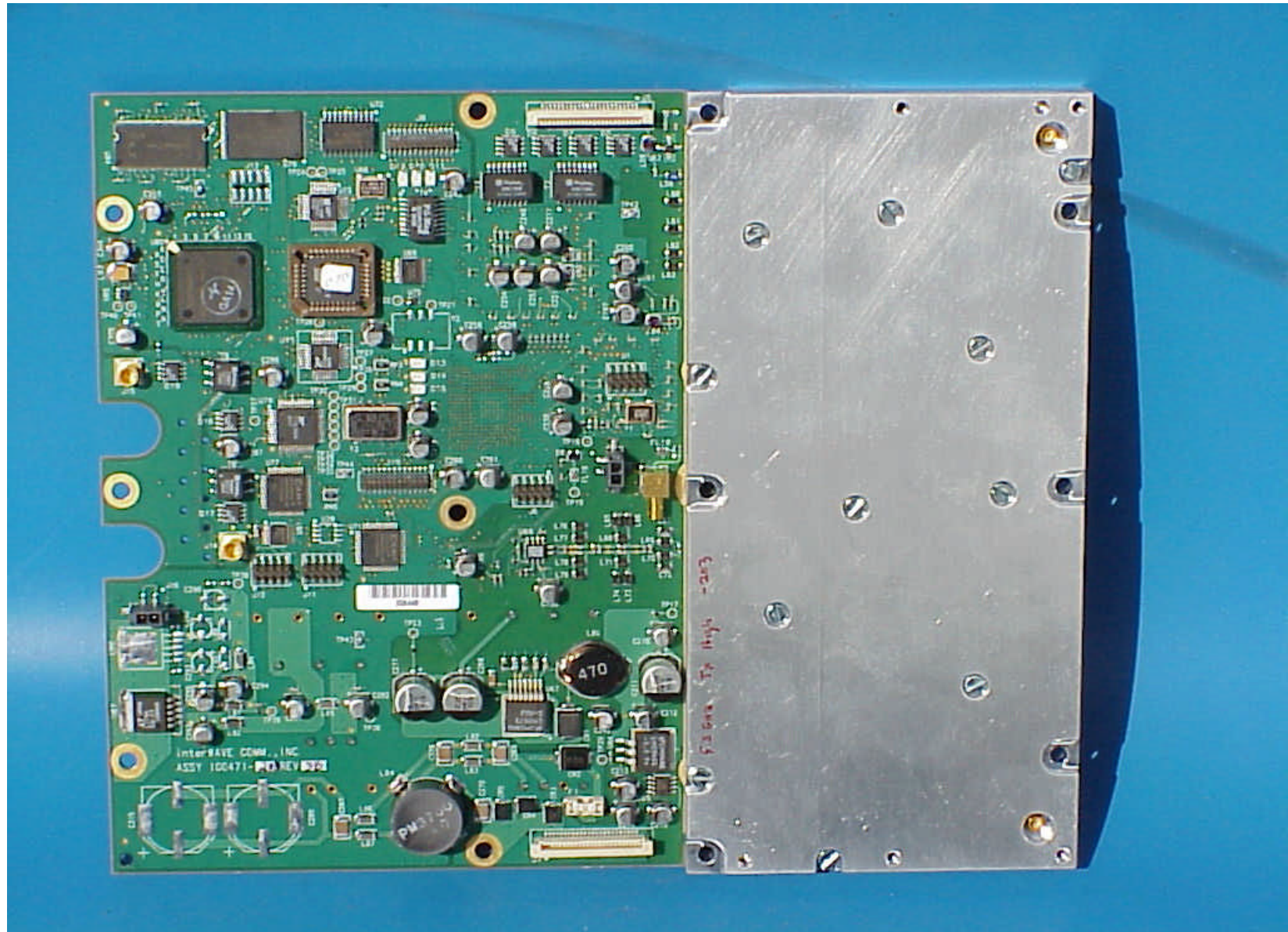


Link CX integral antenna front view



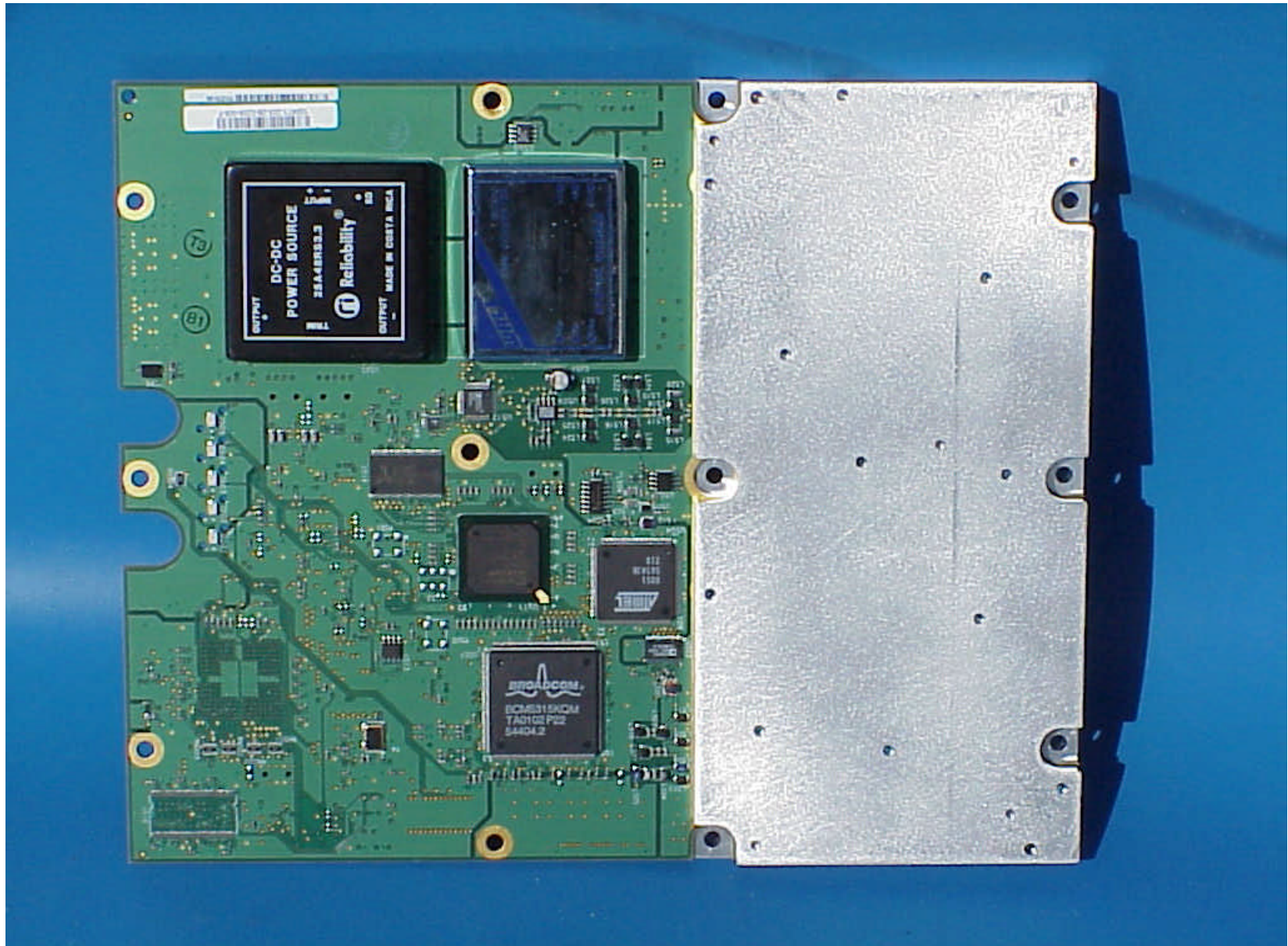
Link CX integral antenna, backside view





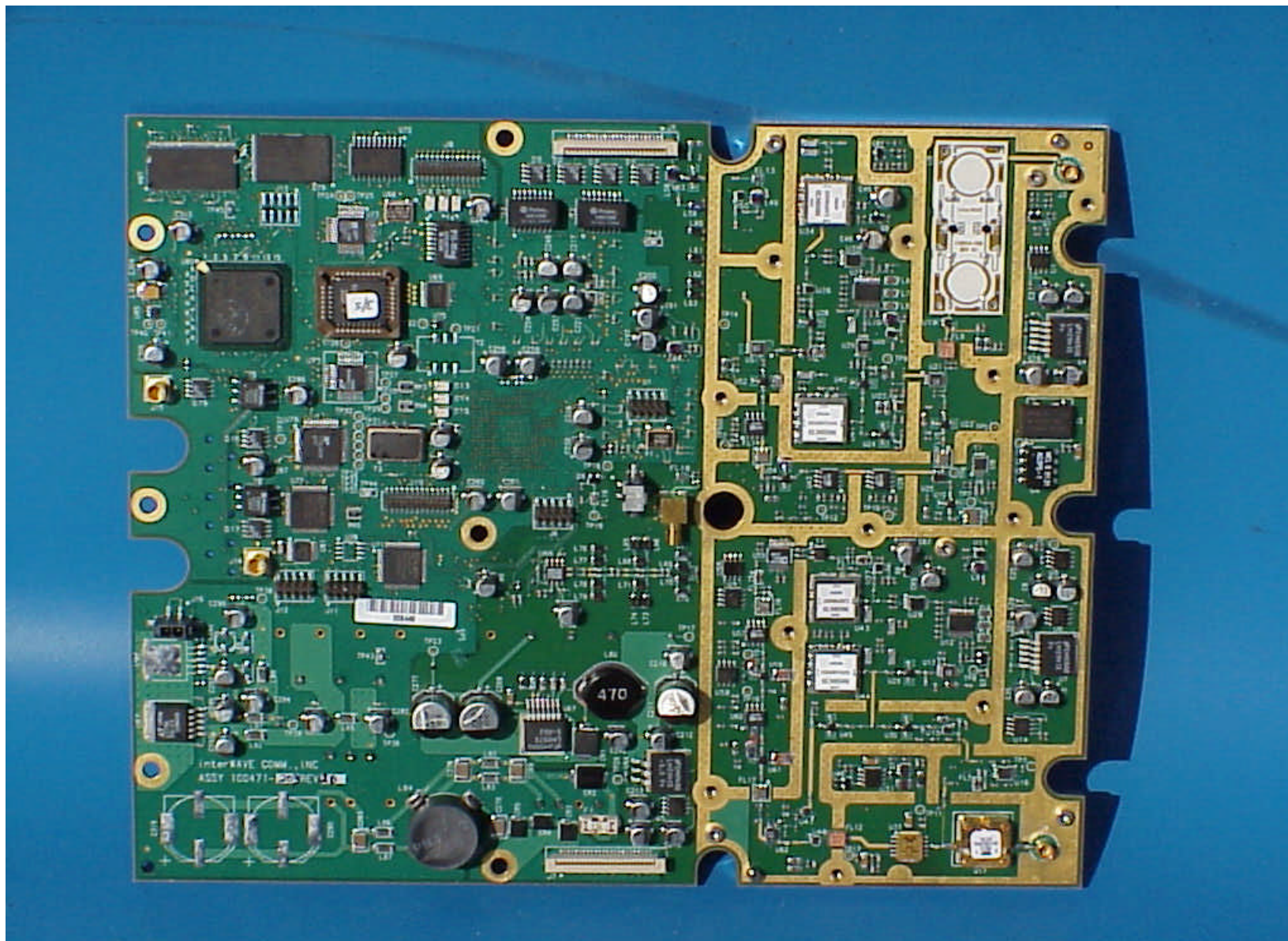
Link CX pcb top view with shields in place





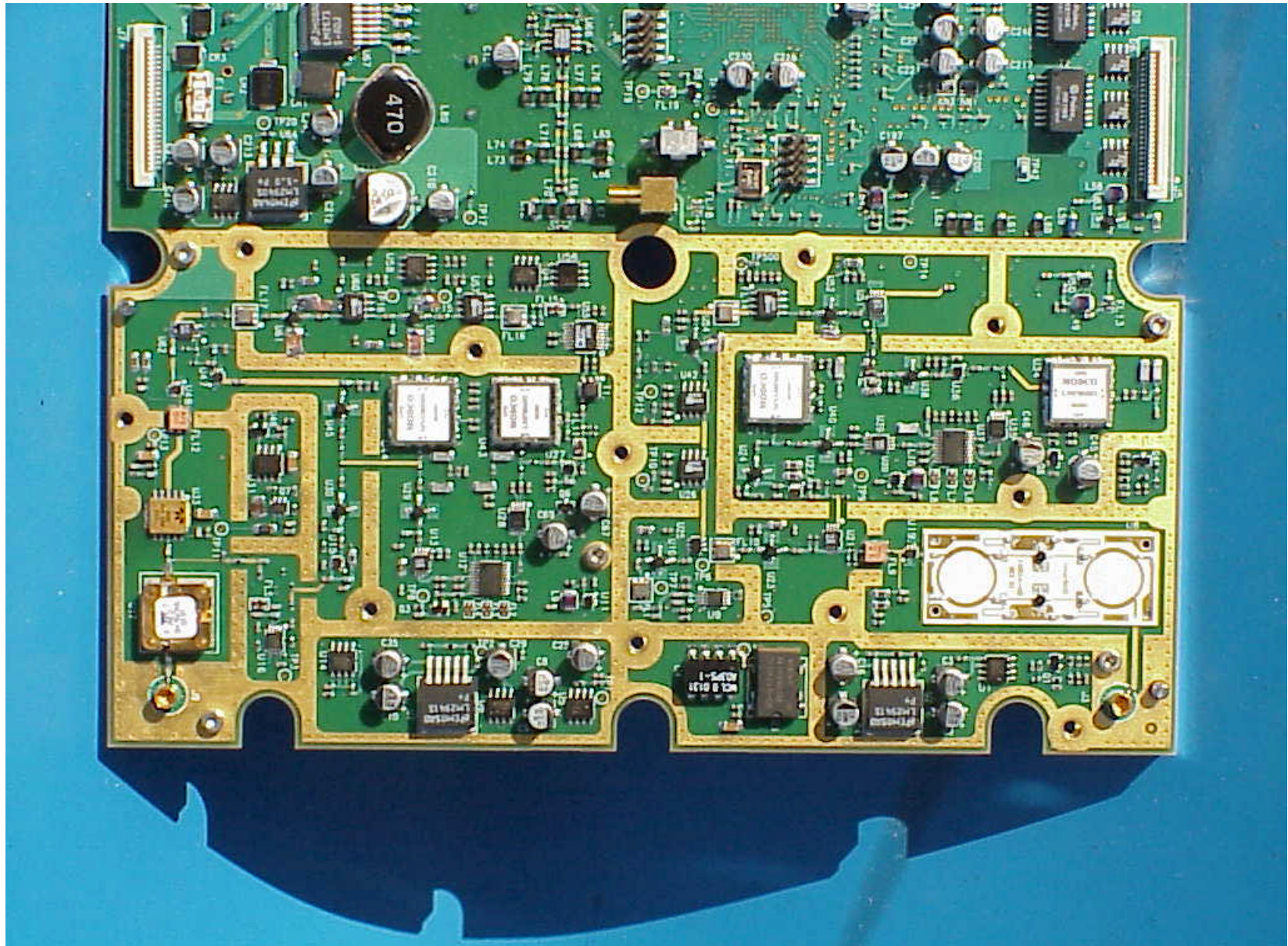
Link CX pcb bottom view with shields in place





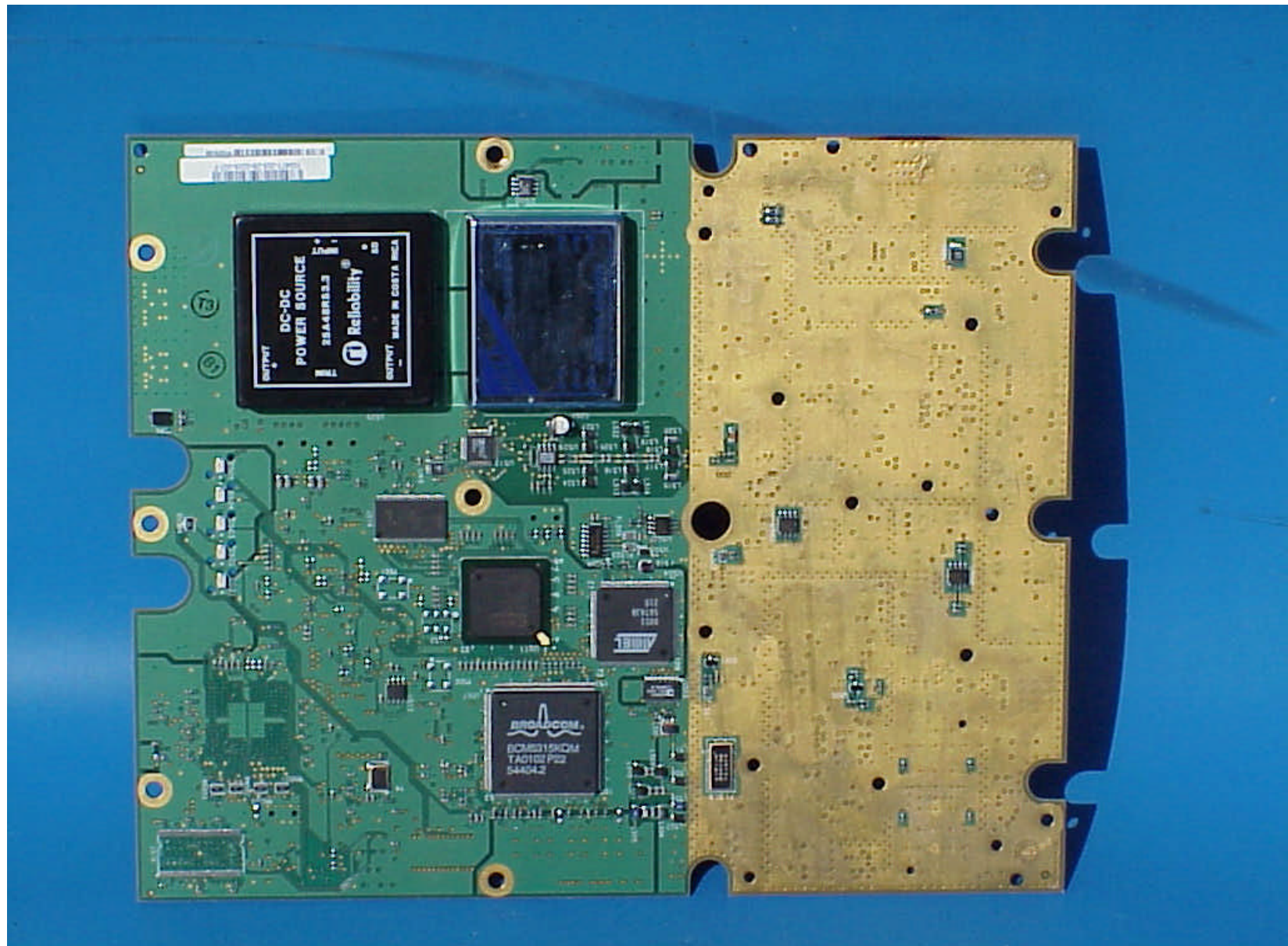
Link CX pcb top view without shields





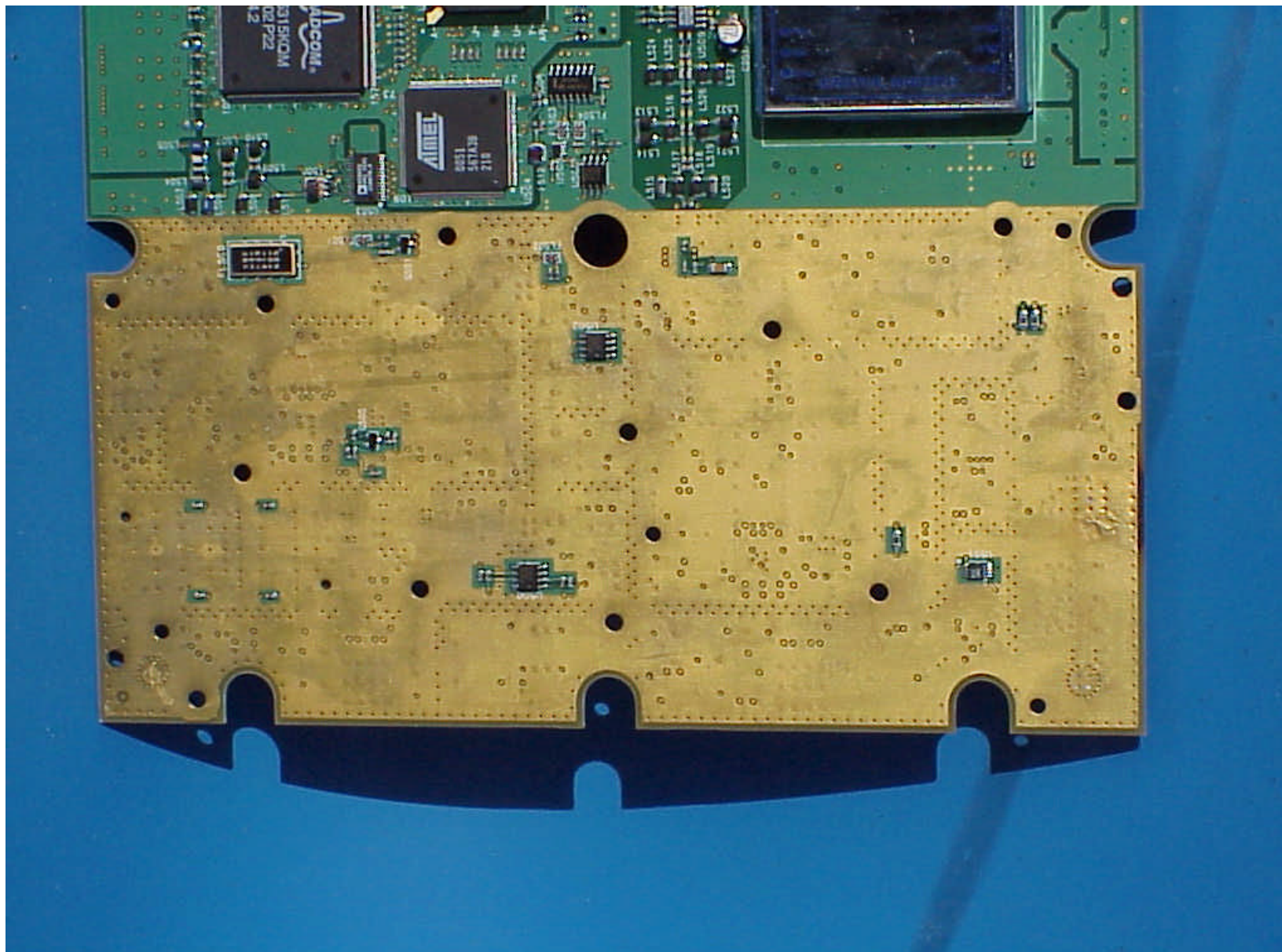
Link CX pcb top view, RF section close-up



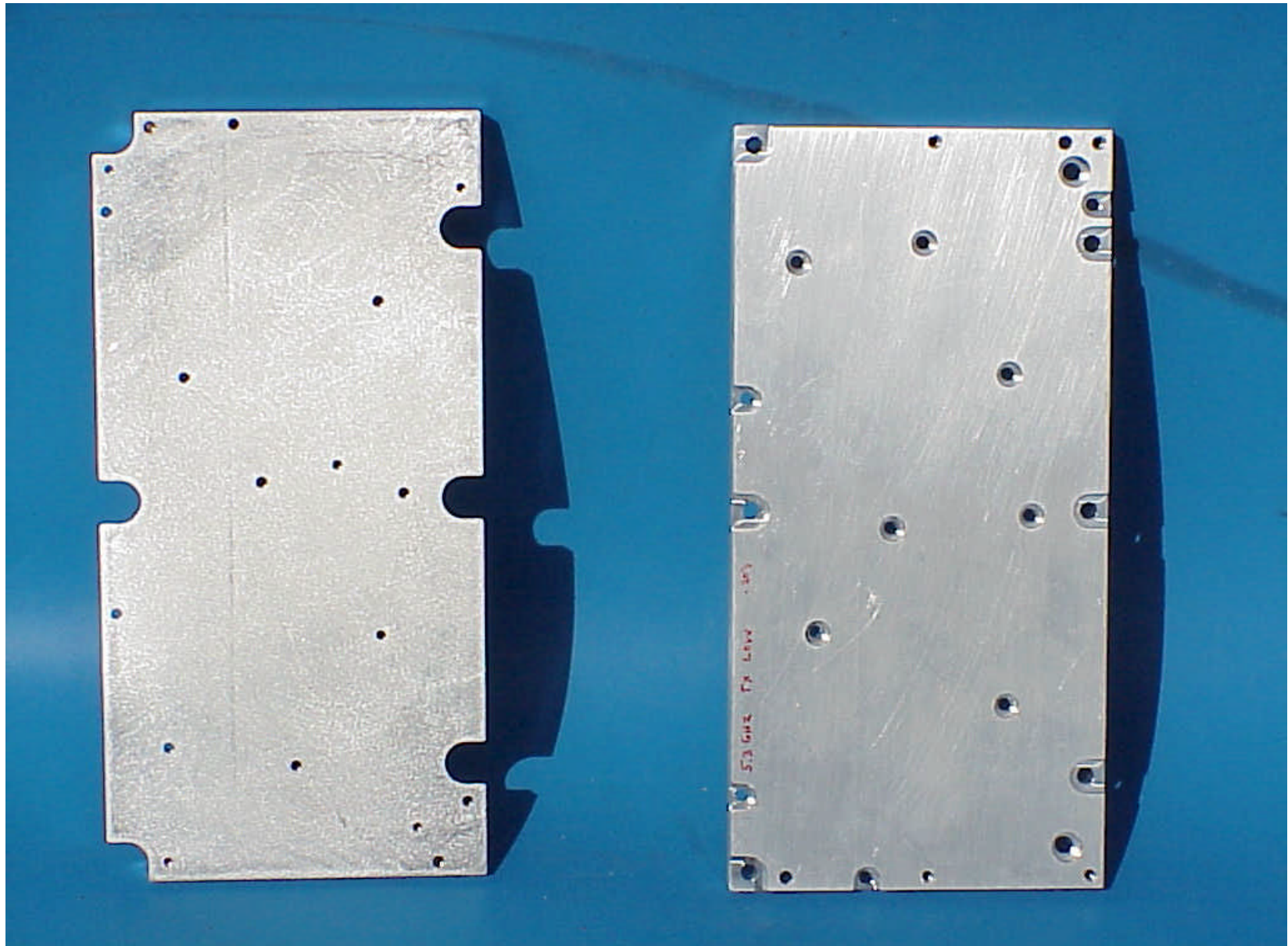


Link CX pcb bottom view without shields



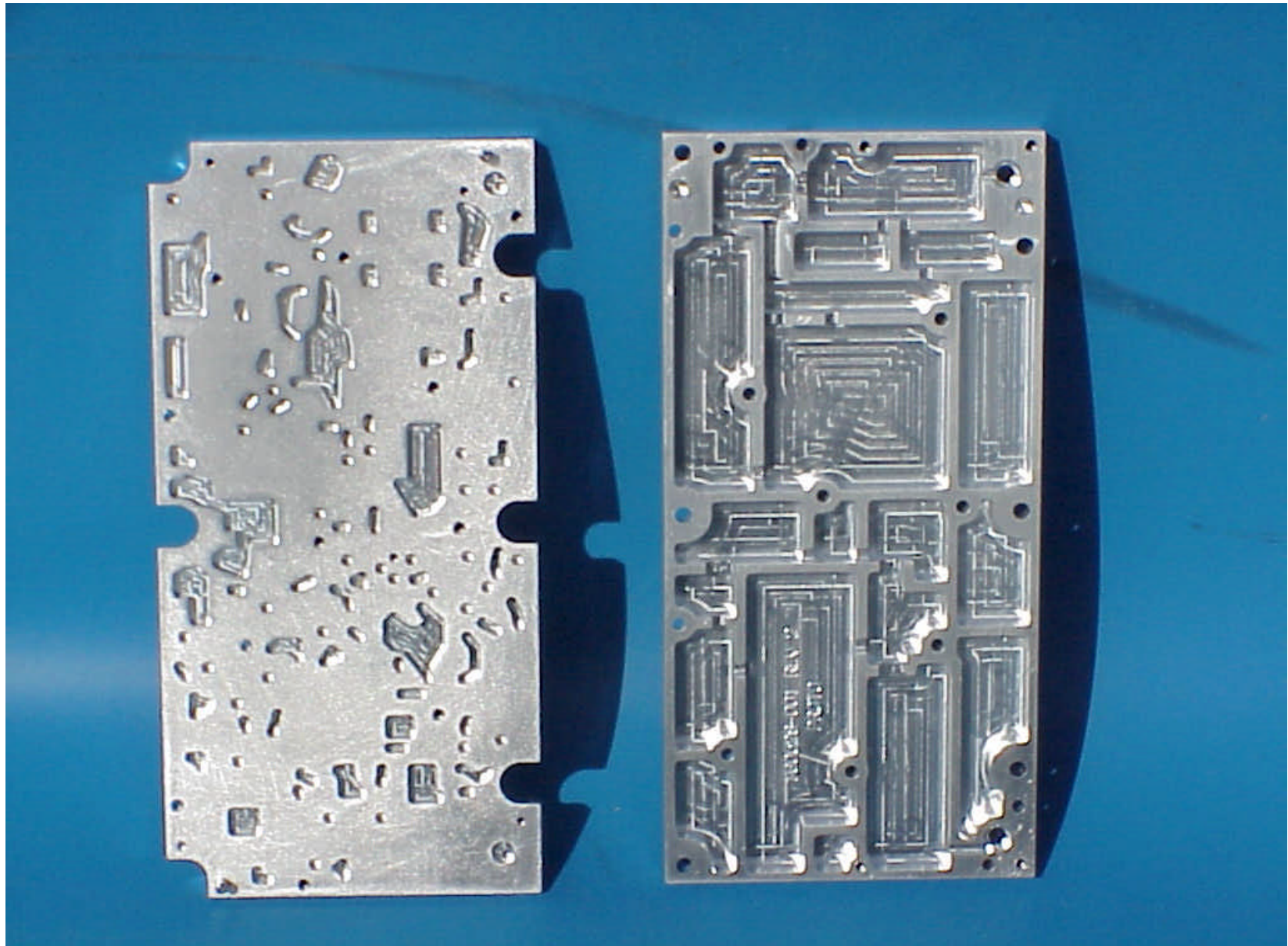


Link CX pcb bottom view, RF section close-up

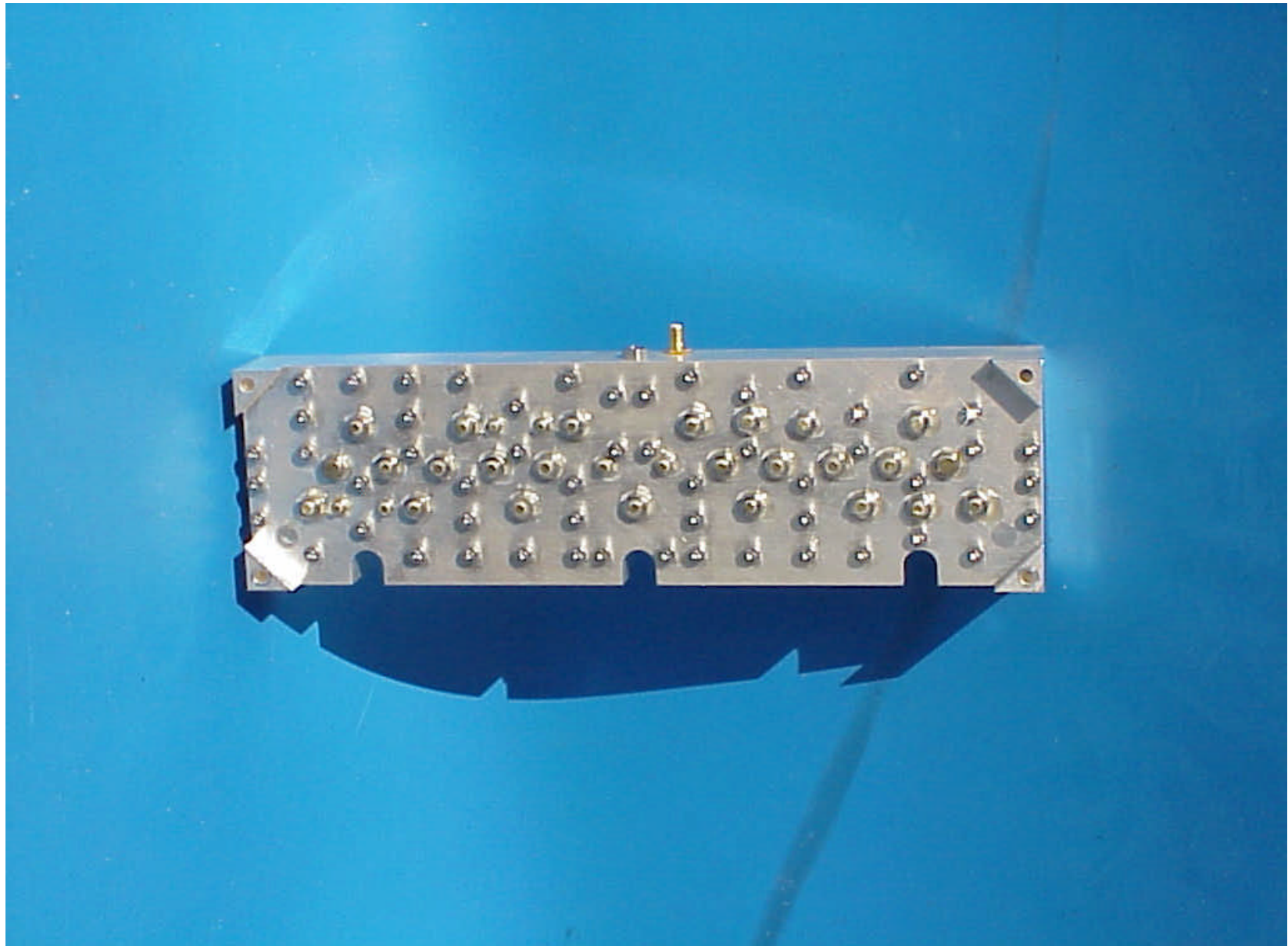


Link CX shields, outside facing surfaces



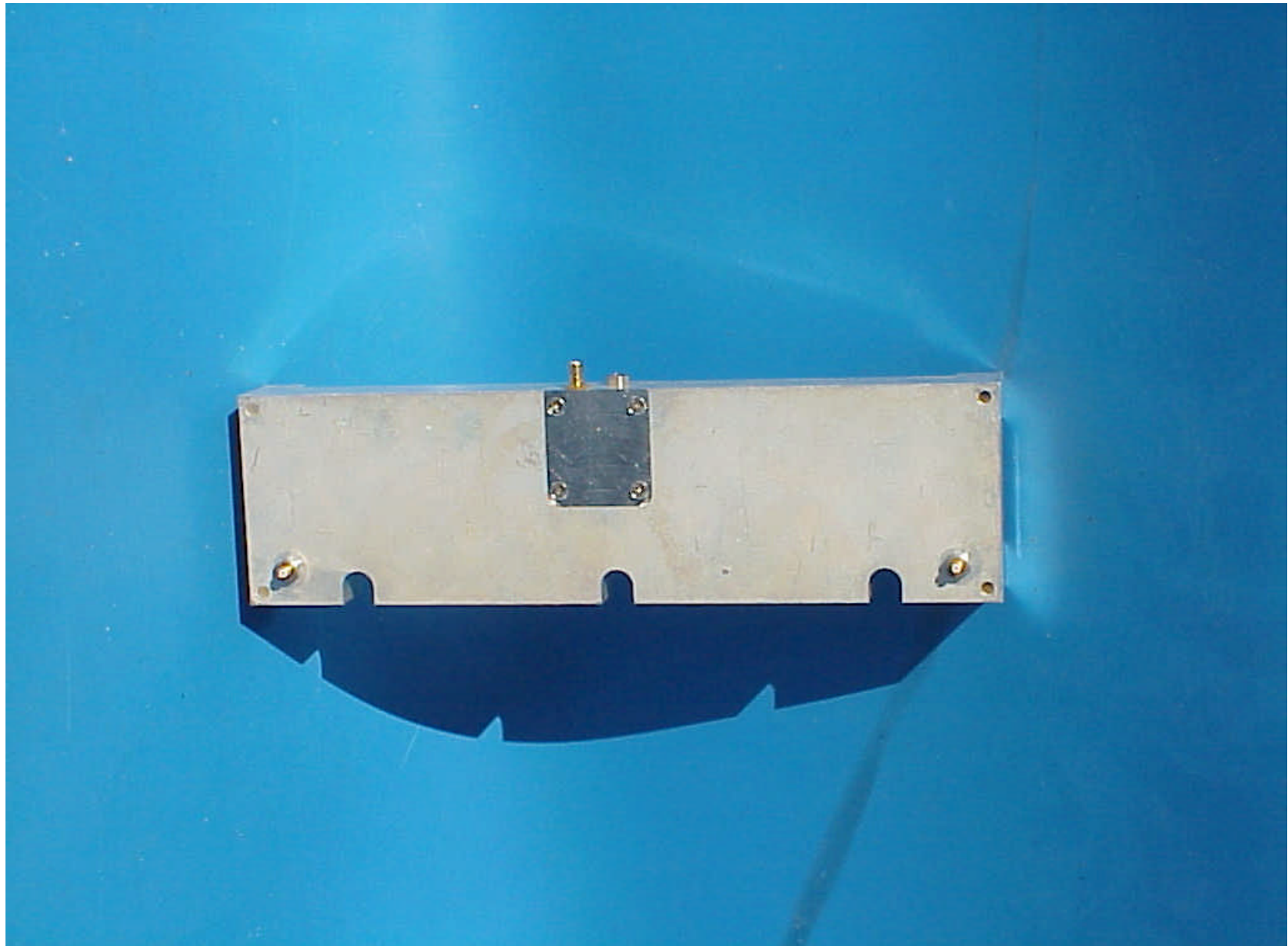


Link CX shields, inside facing surfaces



Link CX duplexer, top view





Link CX duplexer, bottom view