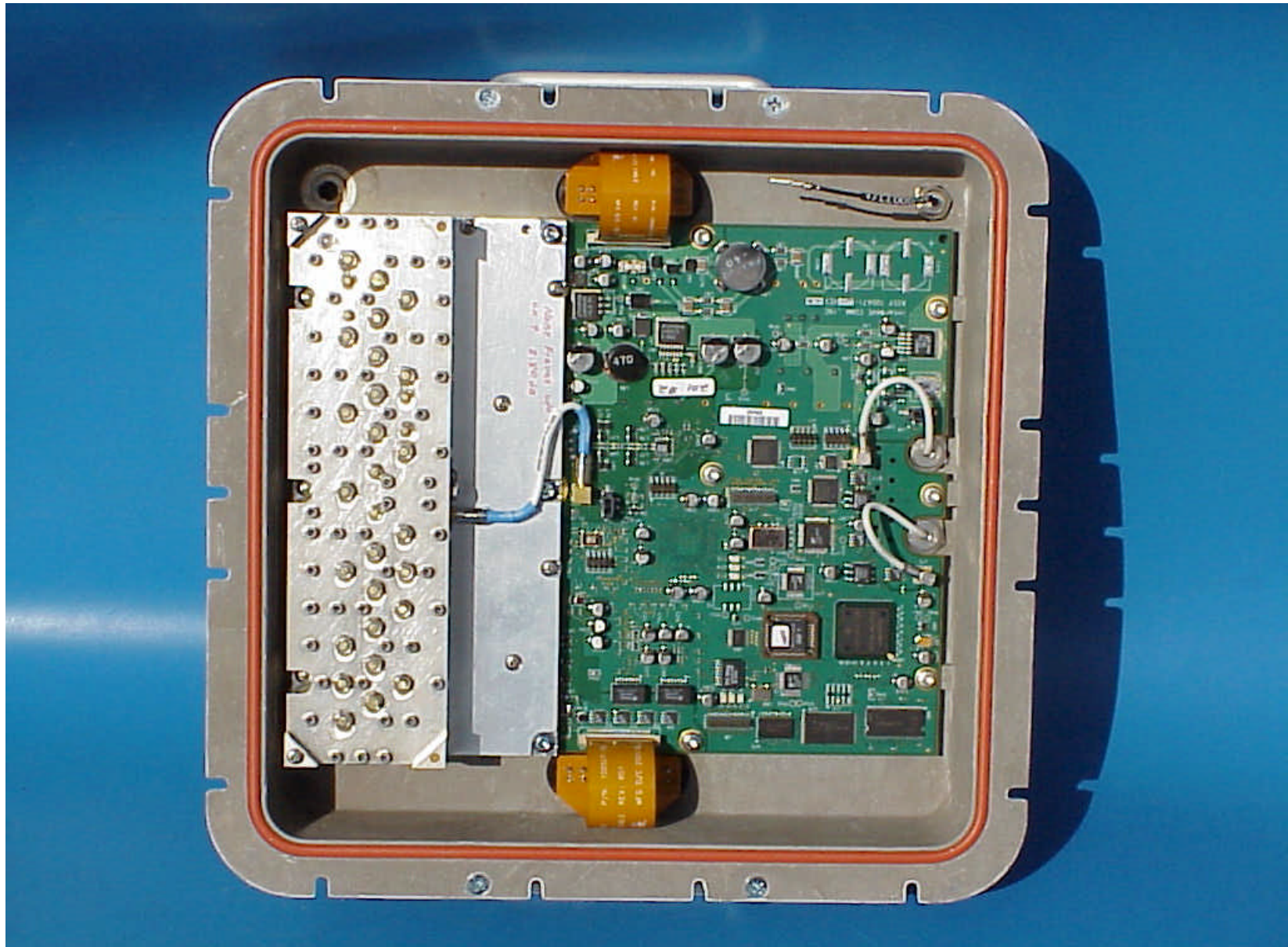
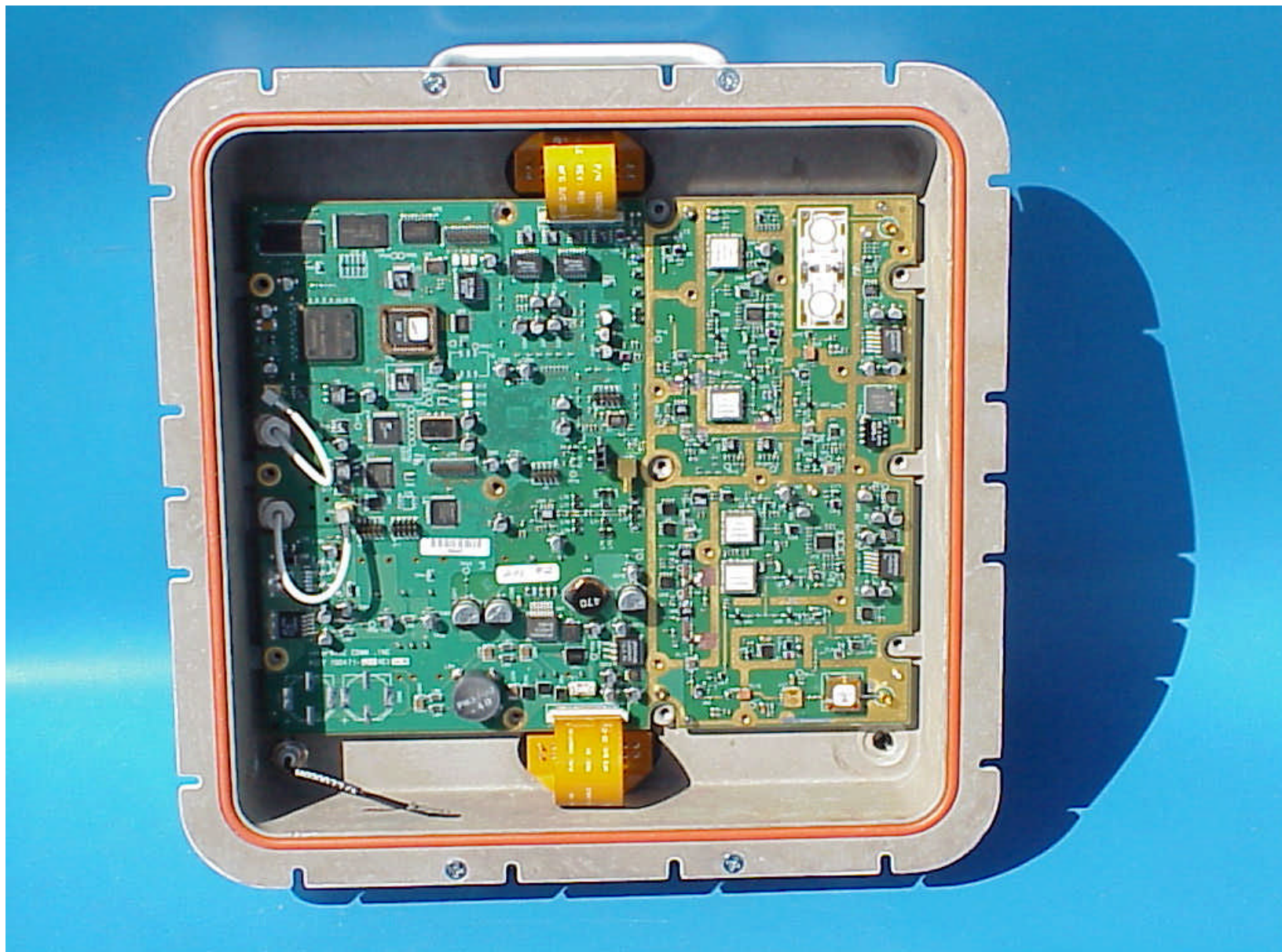


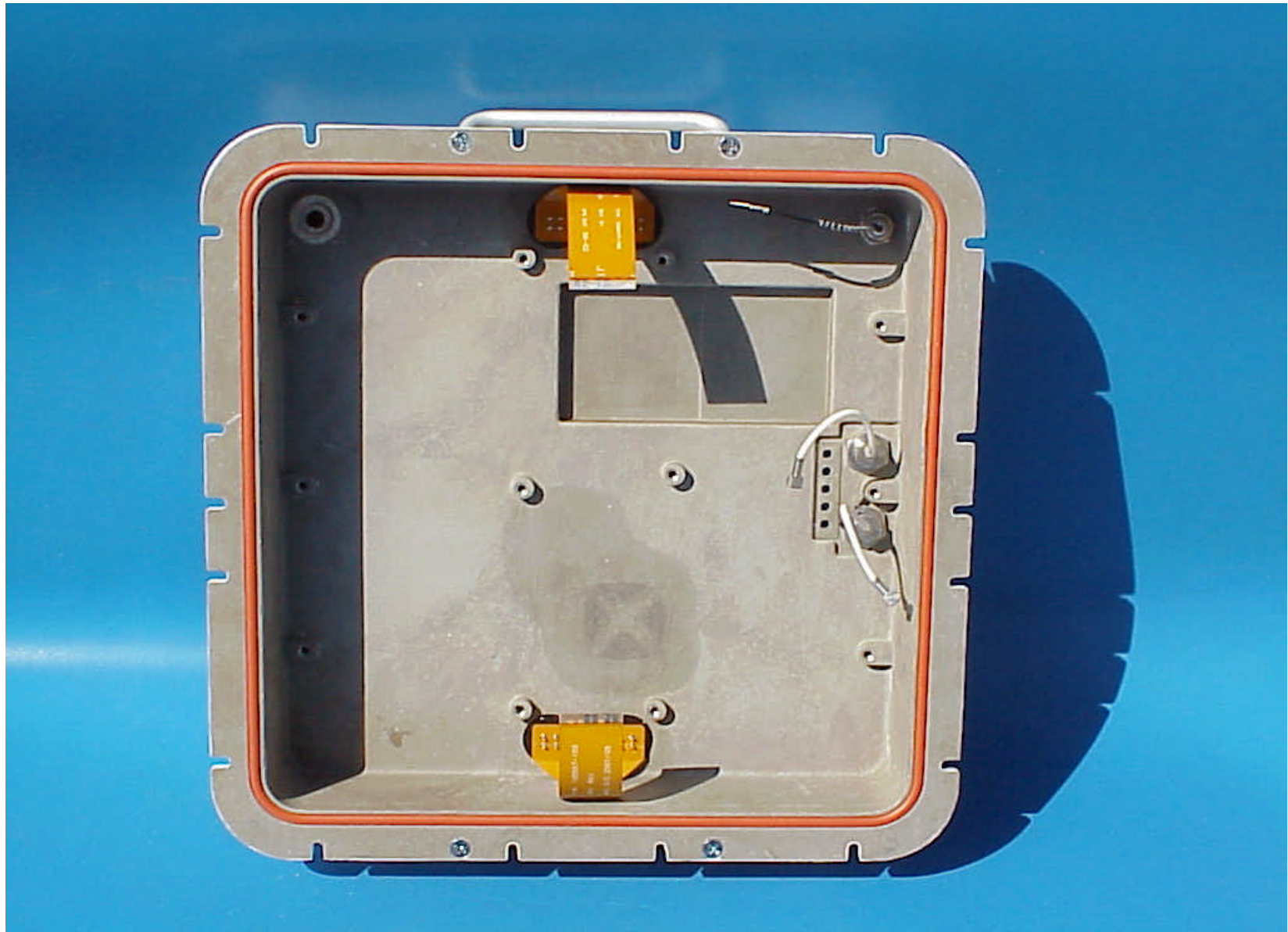
Link CX integral antenna attachment



Link CX view of PCB in enclosure with shields and duplexer



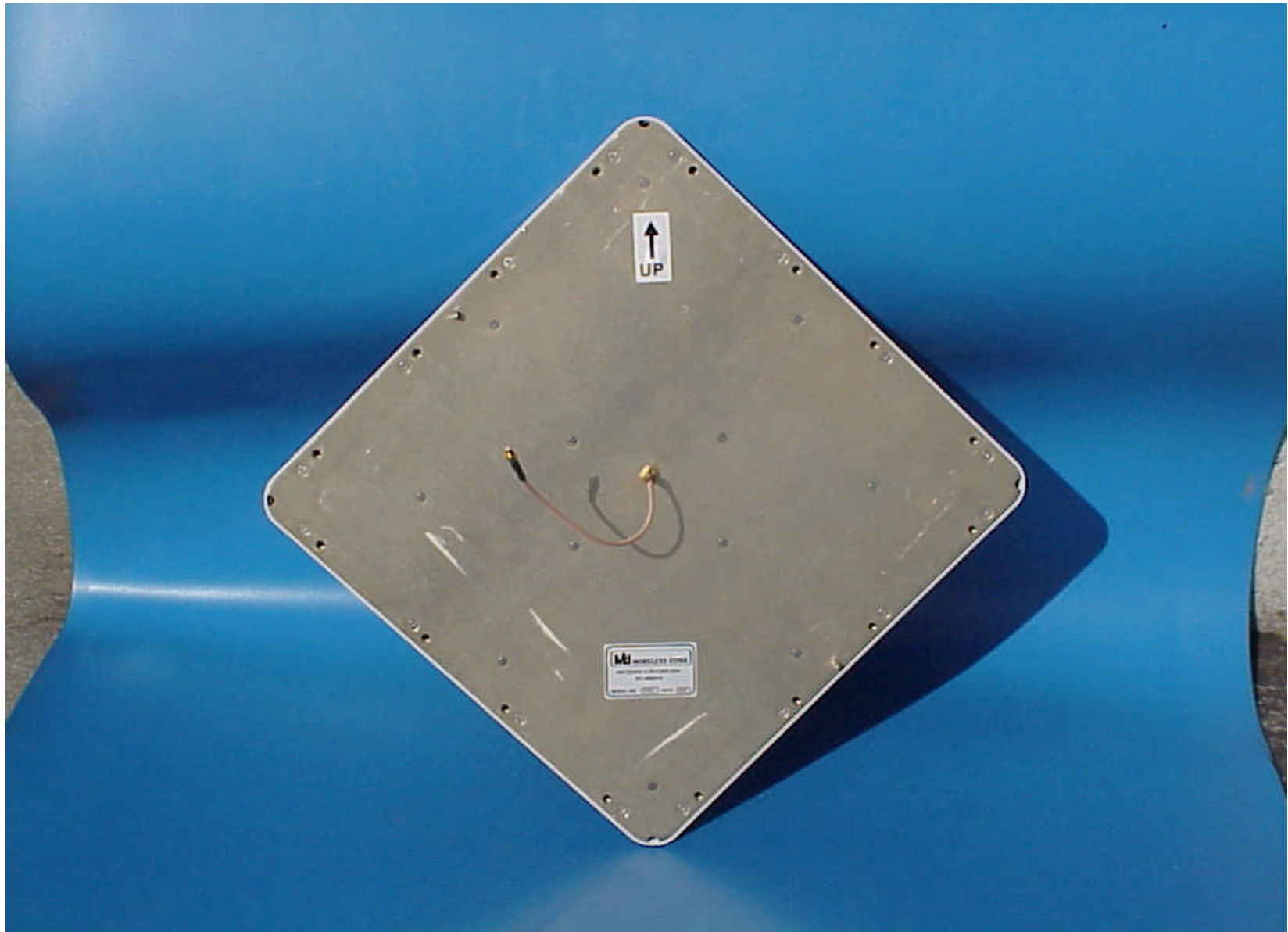
Link CX view of PCB in enclosure without shields



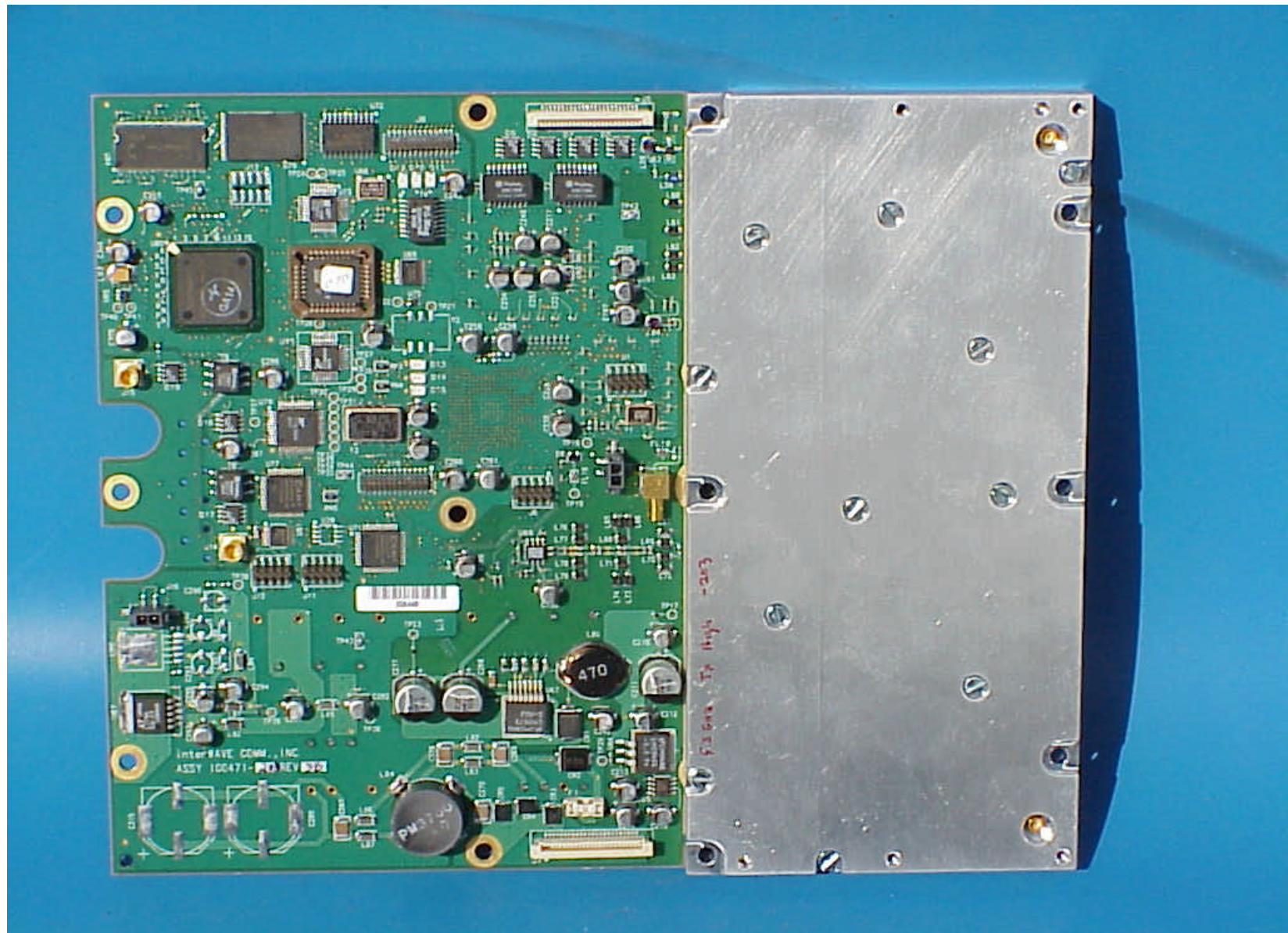
Link CX view of enclosure bottom



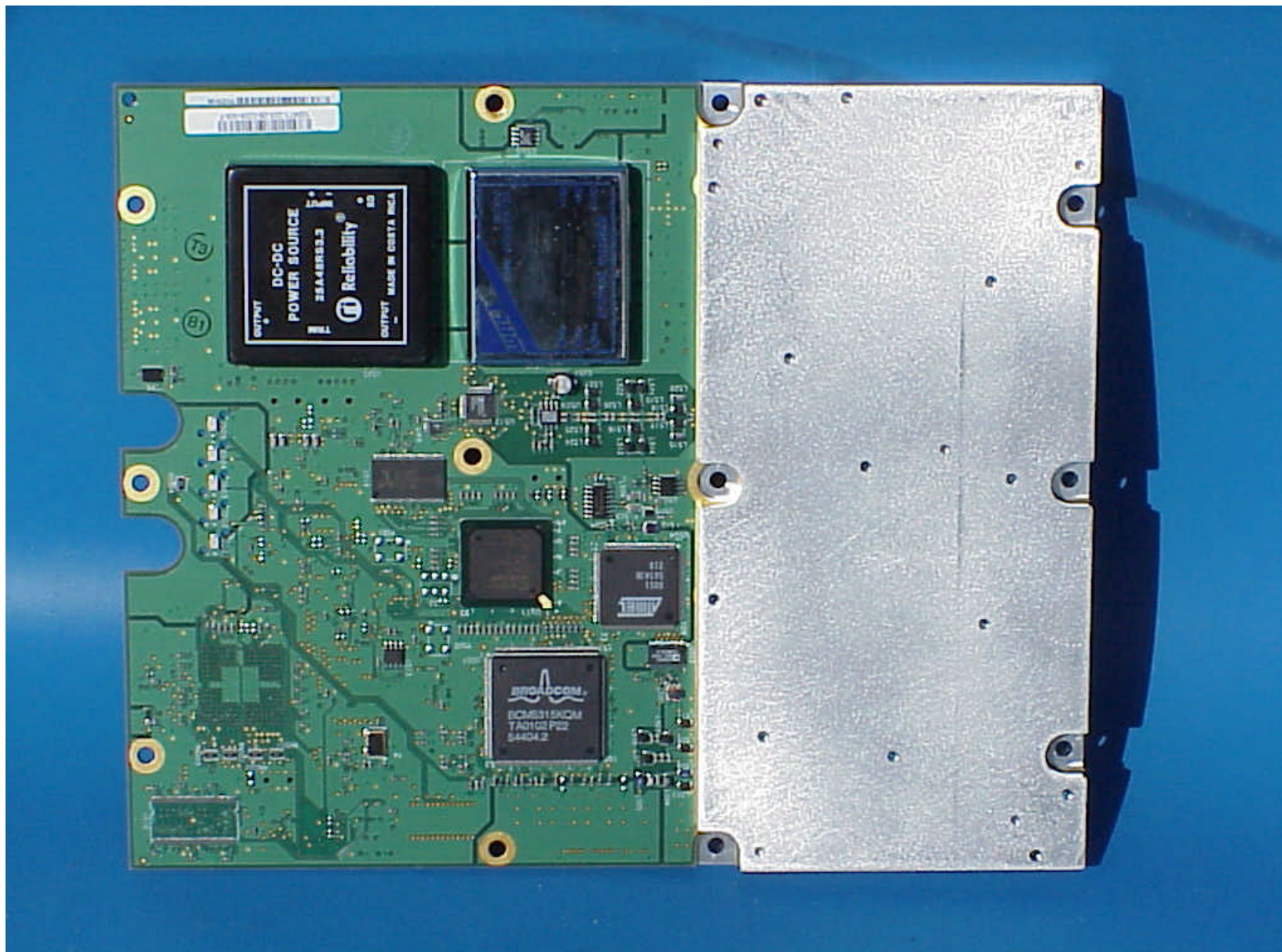
Link CX integral antenna front view



Link CX integral antenna, backside view

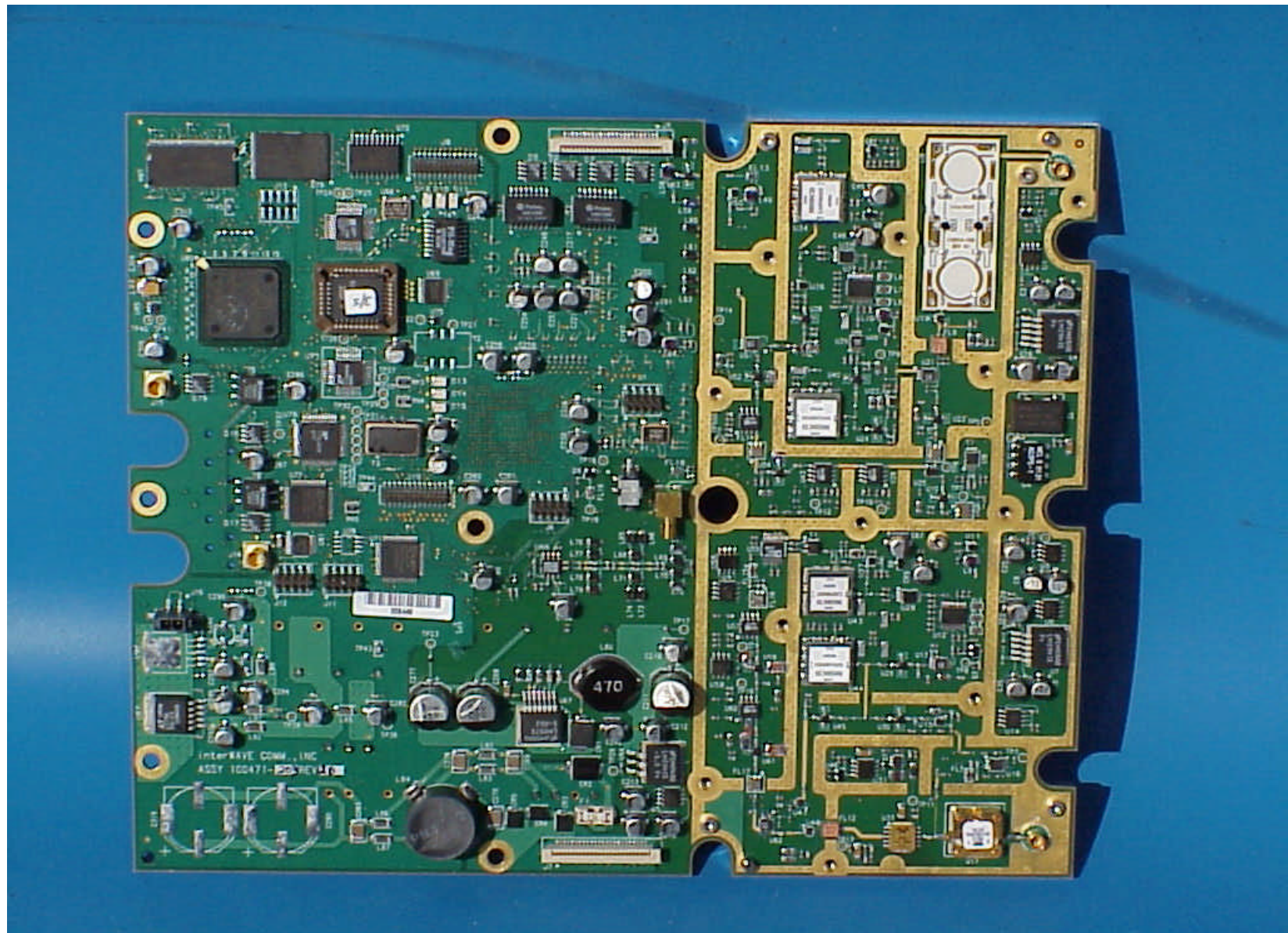


Link CX pcb top view with shields in place

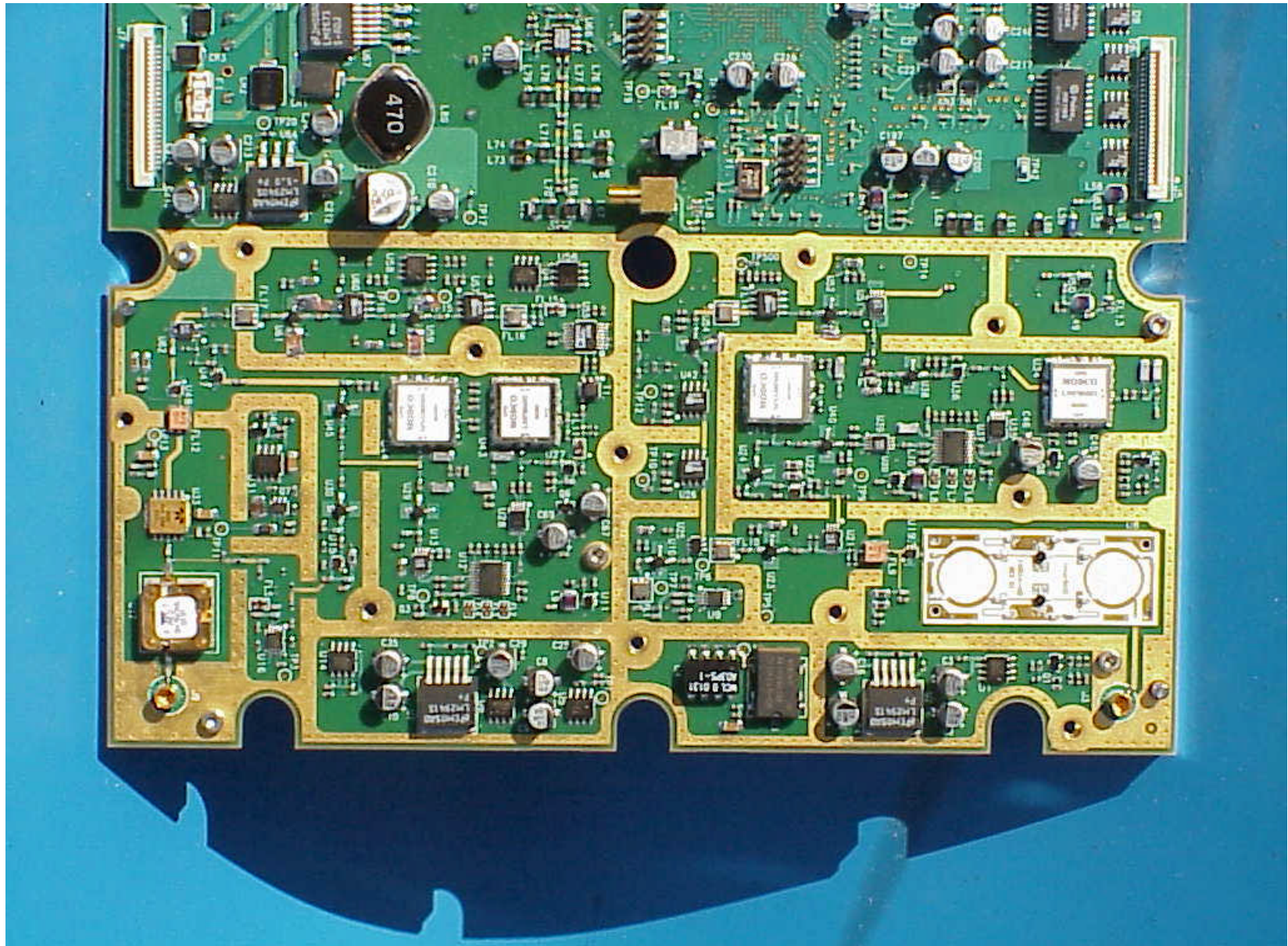


Link CX pcb bottom view with shields in place

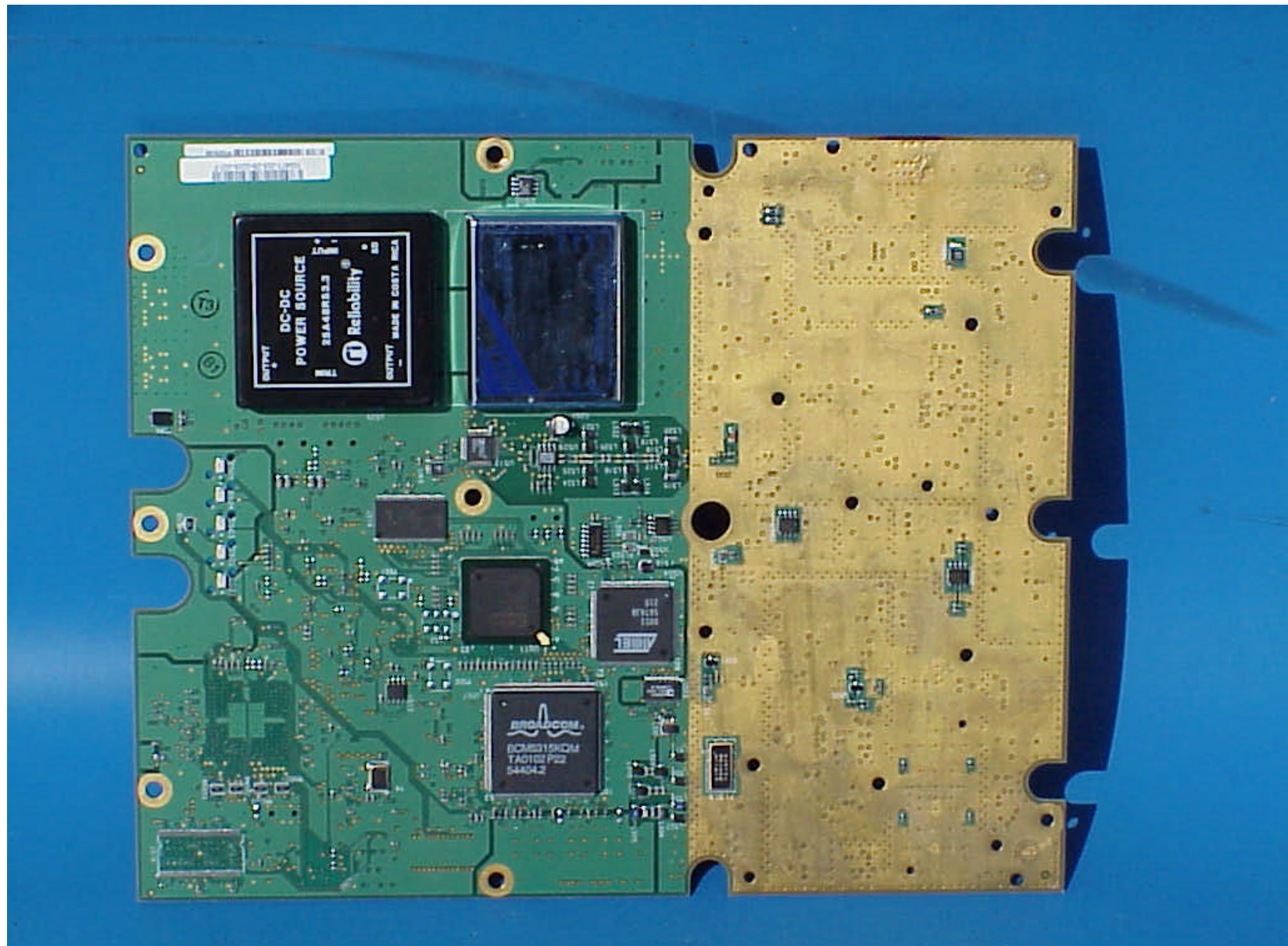




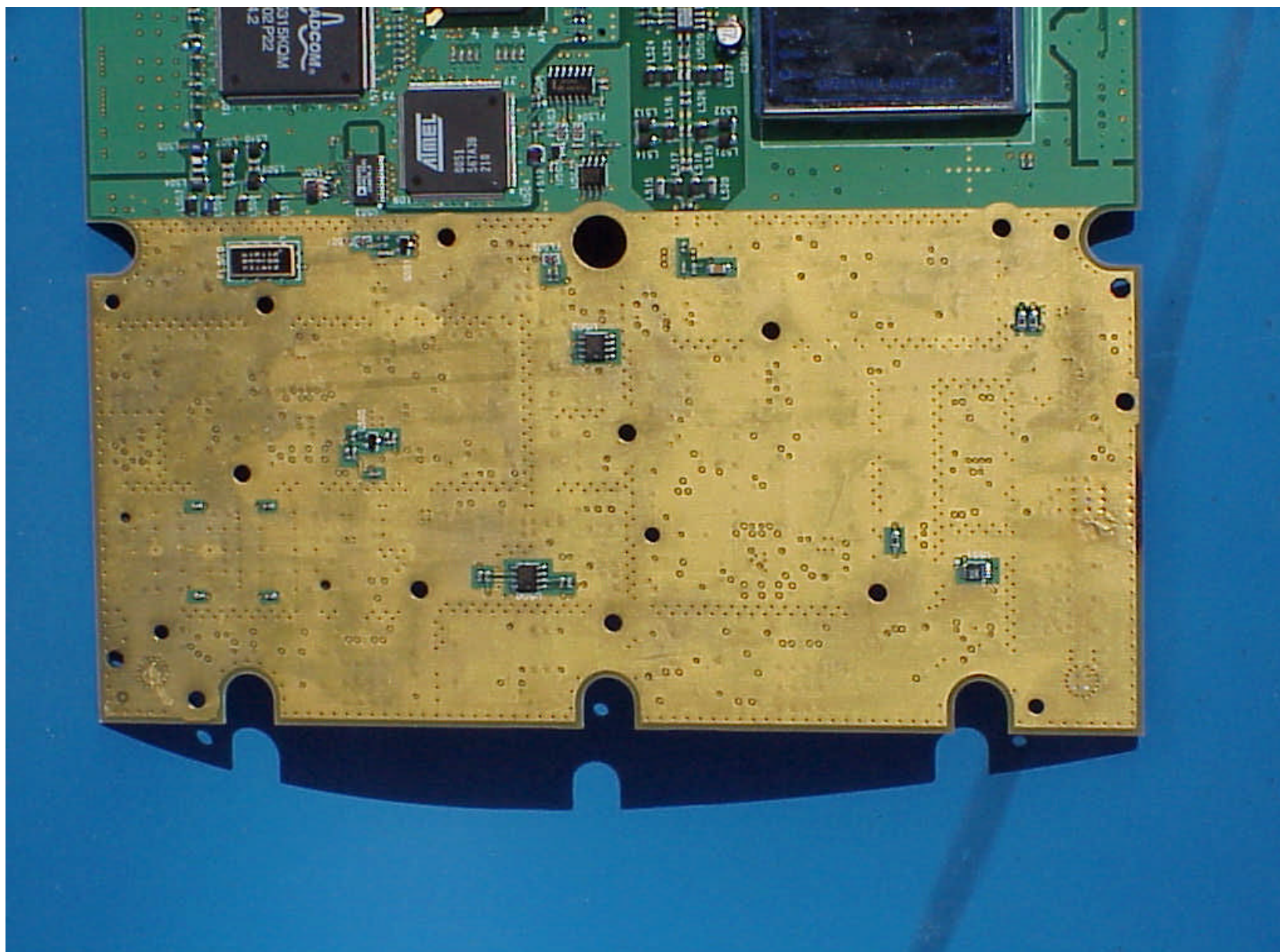
Link CX pcb top view without shields



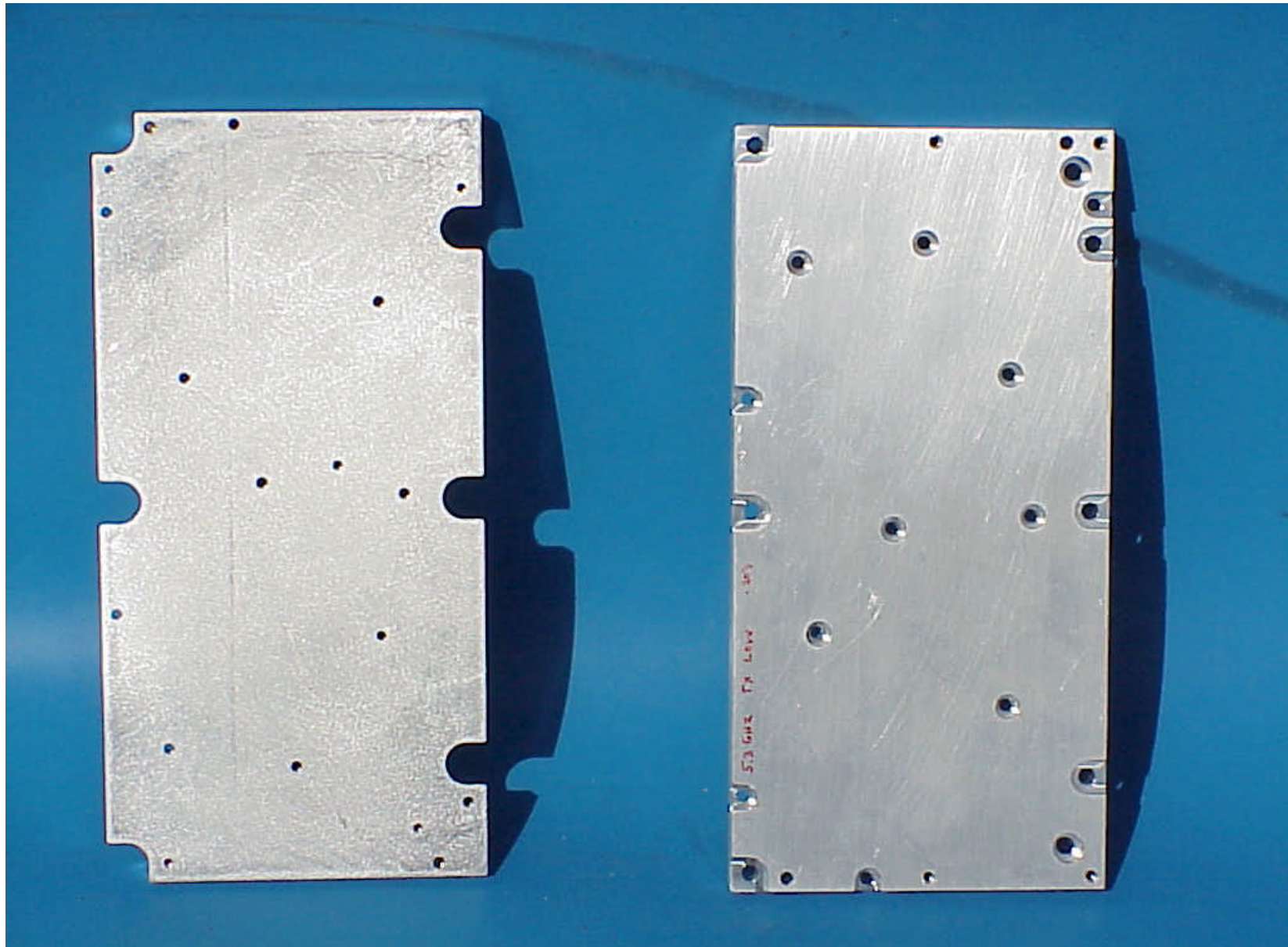
Link CX pcb top view, RF section close-up



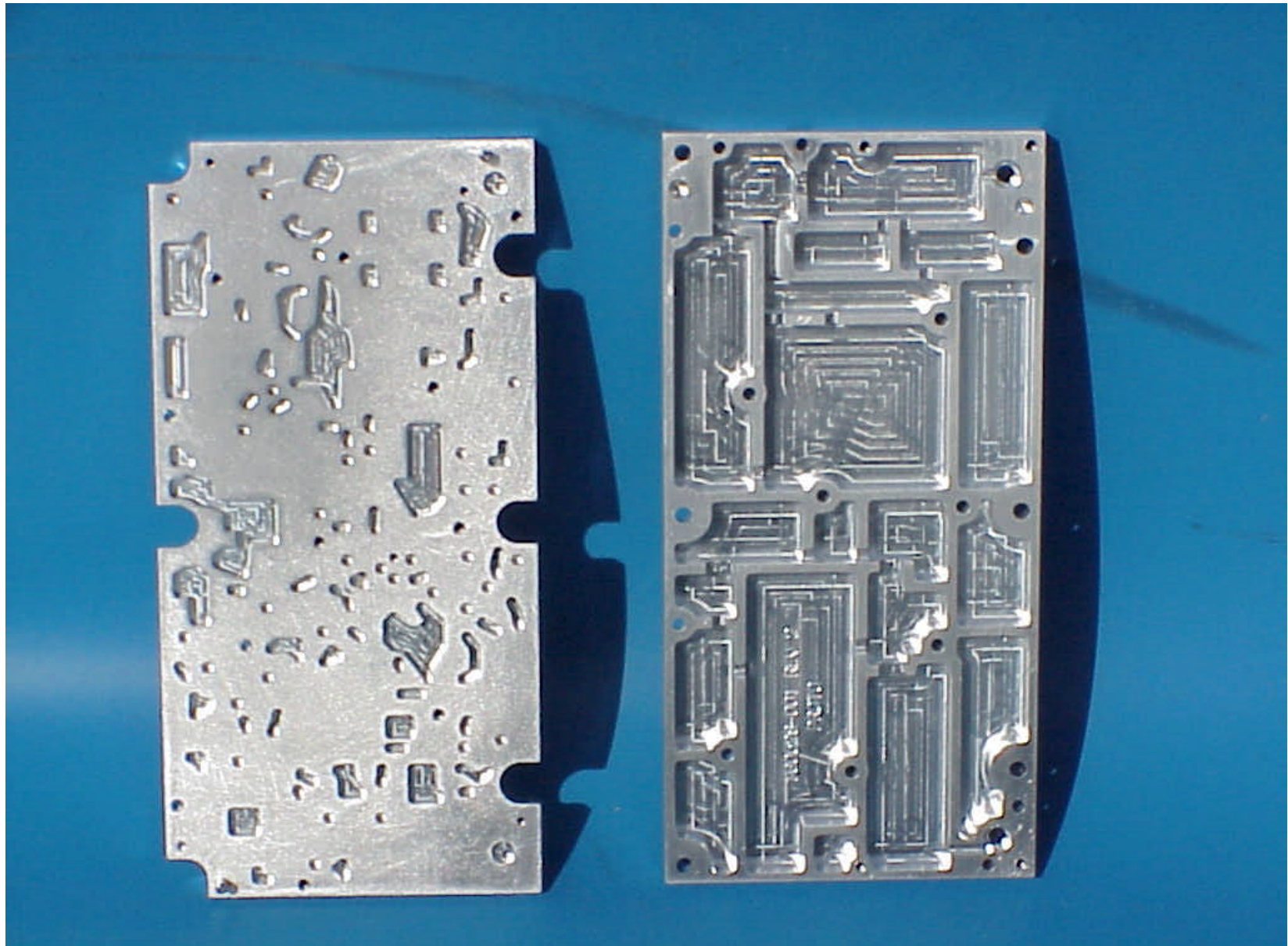
Link CX pcb bottom view without shields



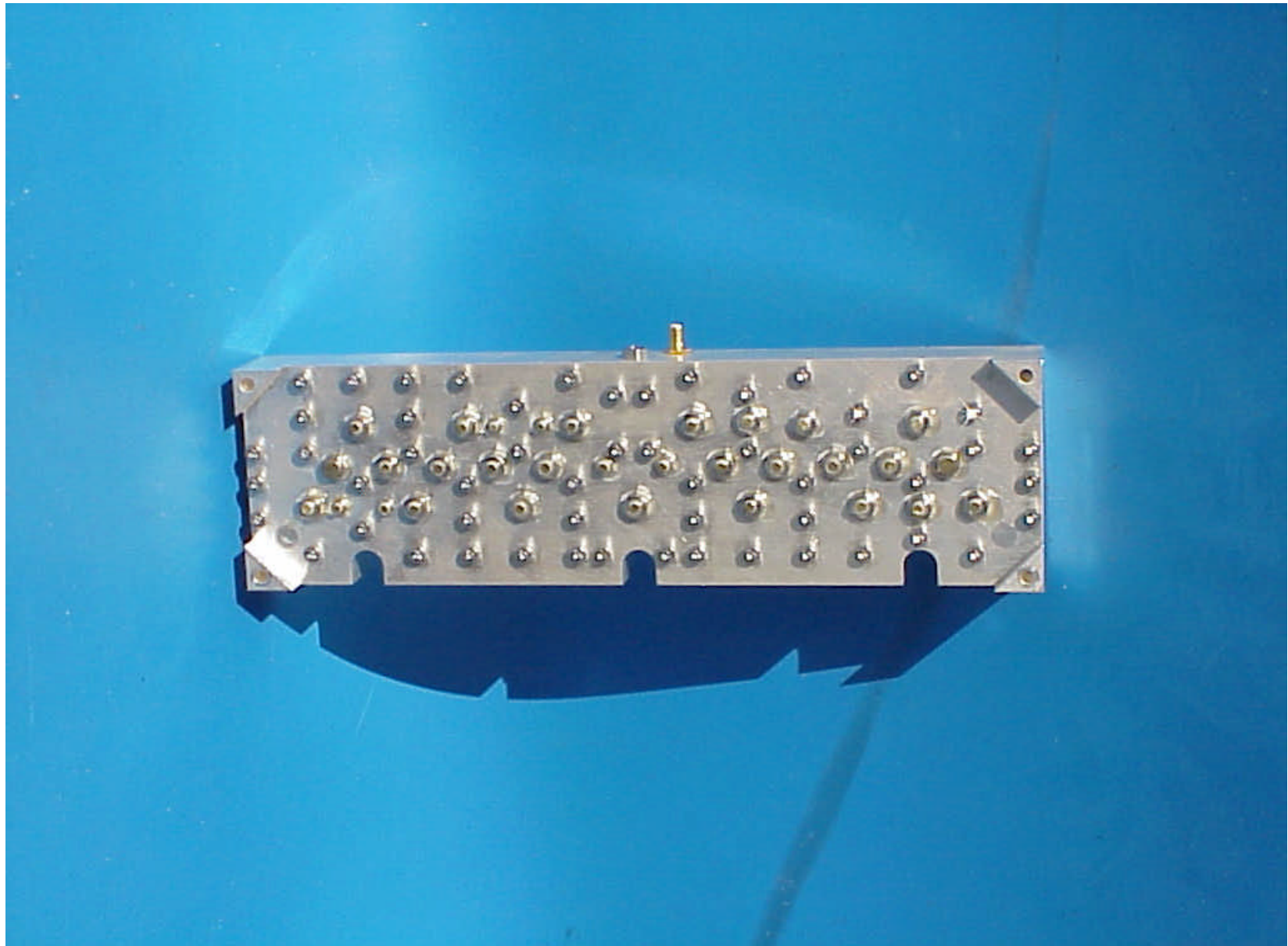
Link CX pcb bottom view, RF section close-up



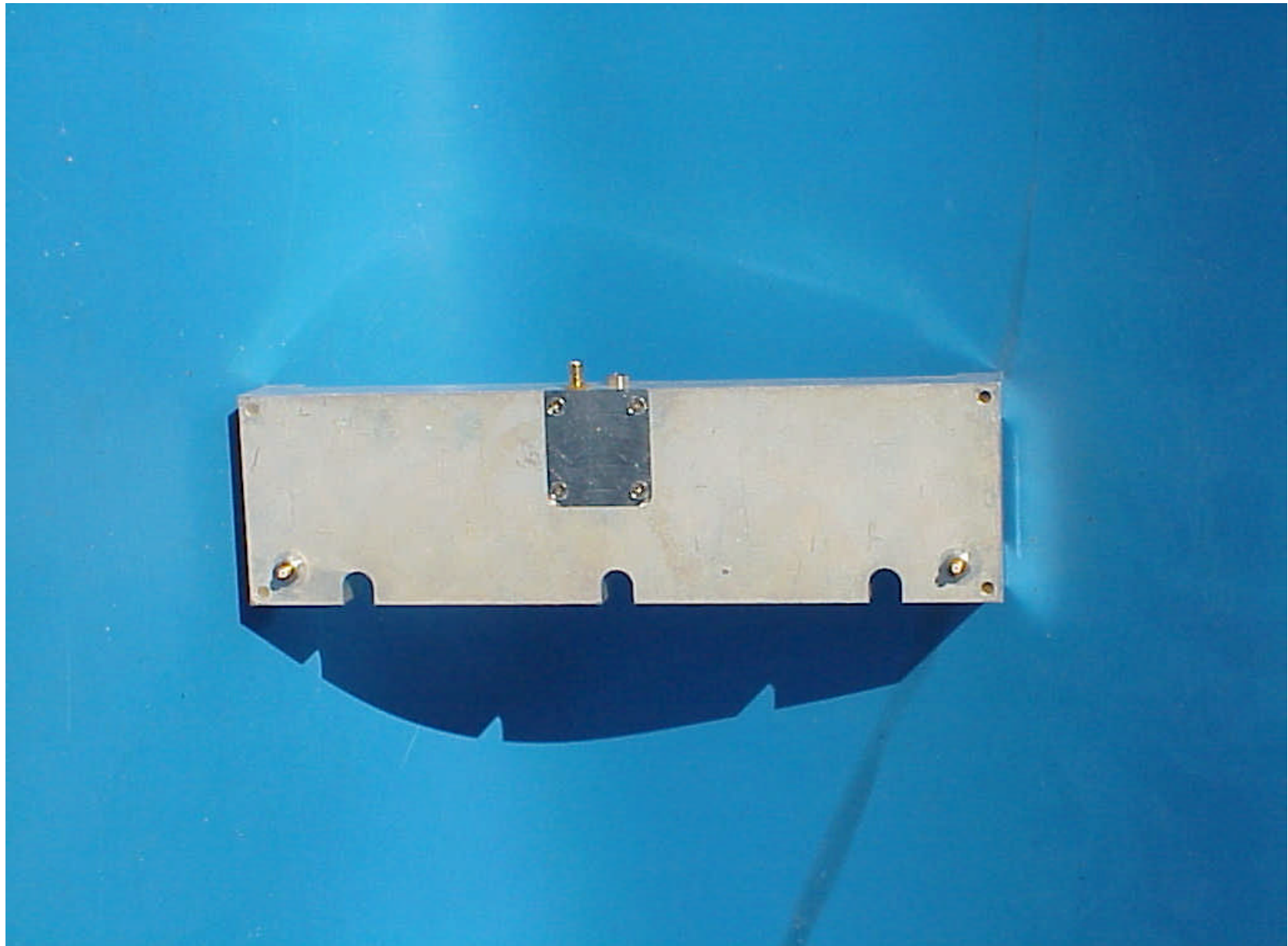
Link CX shields, outside facing surfaces



Link CX shields, inside facing surfaces



Link CX duplexer, top view



Link CX duplexer, bottom view