



Telink

B92 Dongle User Guide

Telink Internal Only

1. Product introduction

1.1 General introduction

The TLSR9528 supports standards and industrial alliance specifications including BLE. The TLSR9528 combines the features and functions needed for high quality wireless audio and wearable.

1.2 Package Material list

TLSR9528ADK88D

Burning EVK for TLSR9528, Including the Dupont line

2.4GHZ glue stick antenna

1. Product Introduction - Continued

1.2 Material List - continued



2. Core Board Introduction

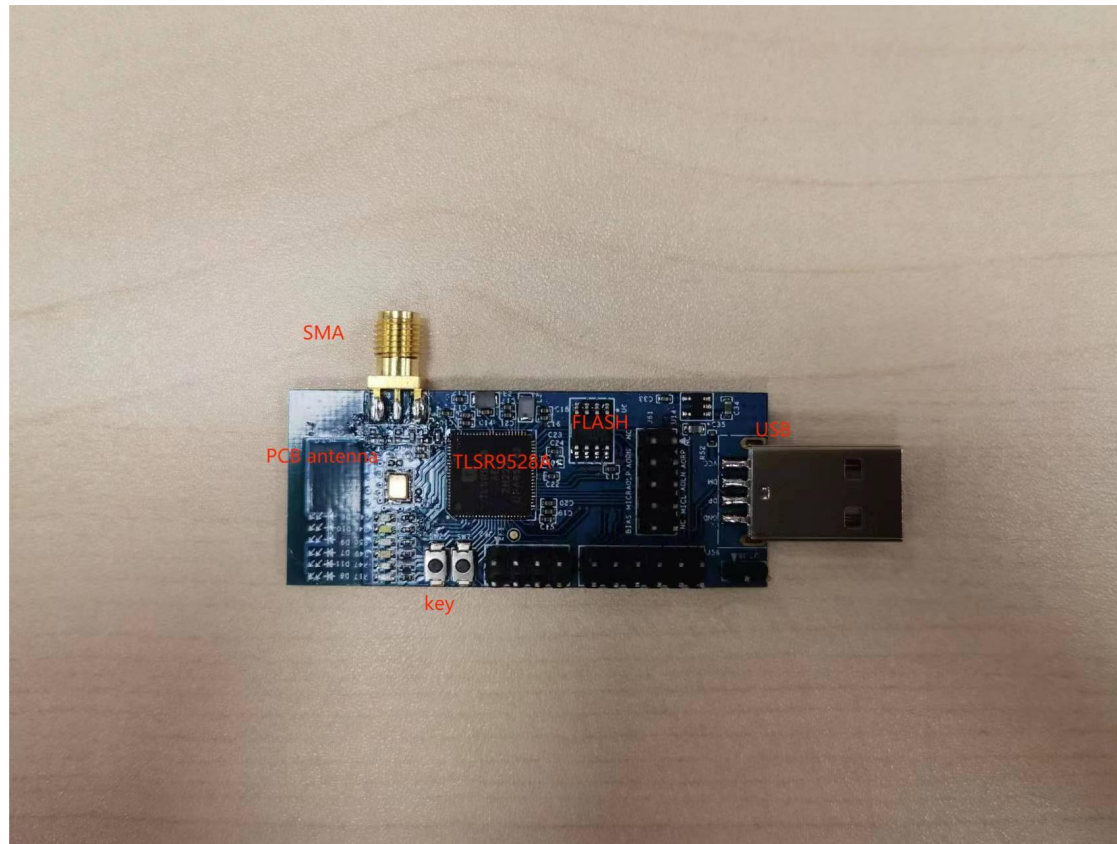
2.1 Dongle introduction

The TLSR9528 supports standards and industrial alliance specifications including BLE. The TLSR9528 combines the features and functions needed for high quality wireless audio and wearable devices into a single System-on-Chip (SoC)

2.2 The core board has the following characteristics

Clock source of 24 MHz & 32.768 kHz Crystal and 32 kHz / 24 MHz embedded RC oscillator, among which the external 24MHz crystal is to calibrate internal 32 kHz clock, the internal 32 kHz oscillator is for low precision application, the external 32.768 kHz crystal is for high precision application Up to 48 GPIOs. All digital IOs can be used as GPIOs. Configurable to select 2-wire SDP or 4-wire JTAG debug interface SPI/I2C/UART with hardware flow control and 7816 protocol support

2. Core Board Introduction - Continued



2. Core Board Introduction - Continued

2.1.2 POWER and SWS connection



This device complies with Part 15 of the FCC rules. Operation is subject to the following two conditions: 1) this device may not cause harmful interference, and 2) this device must accept any interference received, including interference that may cause undesired operation.

This equipment has been tested and found to comply with the limits for a Class B digital device, pursuant to Part 15 of the FCC rules. These limits are designed to provide reasonable protection against harmful interference in a residential installation. This equipment generates, uses and can radiate radio frequency energy and if not installed and used in accordance with the instructions, may cause harmful interference to radio communications. However, there is no guarantee that interference will not occur in a particular installation. If this equipment does cause harmful interference to radio or television reception, which can be determined by turning the equipment off and on, the user is encouraged to try correct the interference by one or more of the following measures:

- Reorient the receiving antenna.
- Increase the separation between the equipment and receiver.
- Connect the equipment into and outlet on a circuit different from that to which the receiver is connected.
- Consult the dealer or an experienced radio/TV technician for help.

Changes or modifications not expressly approved by the party responsible for compliance could void your authority to operate the equipment.