

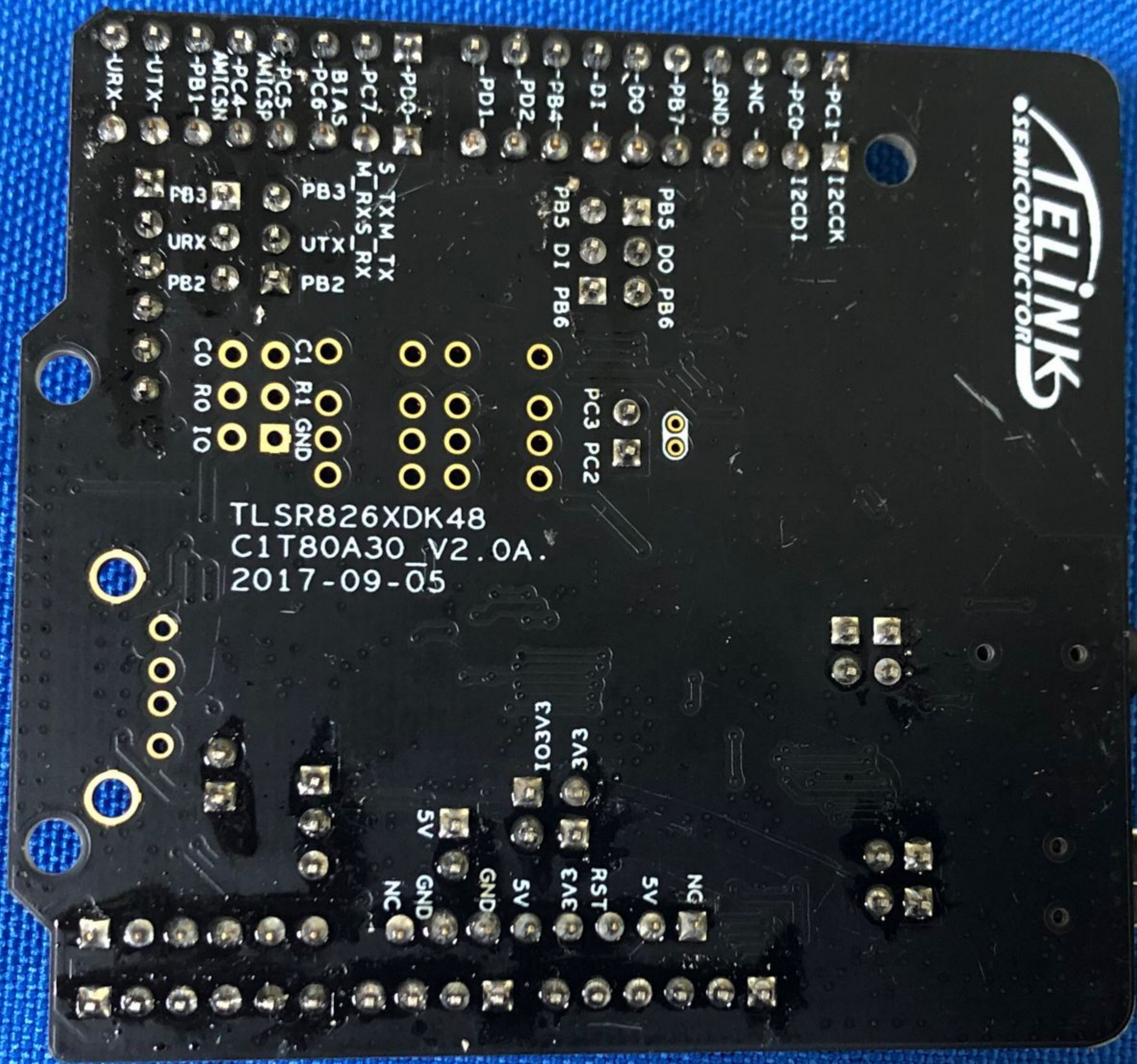
The image shows a black PCB populated with various electronic components. Key features include:

- Connectors:** A USB Type-C port on the left edge, a micro-USB port on the right edge, and a multi-pin header at the top.
- Microcontrollers:** A large square chip (likely a microcontroller) is located in the center-right area.
- Power Management:** Several integrated circuits (ICs) are visible, including a DC-DC converter (U14) and a USB controller (U1).
- Passive Components:** Numerous resistors (R1-R19), capacitors (C1-C10), and inductors (L1, L2) are distributed across the board.
- Other Components:** A USB Type-A connector (J18) is located near the top-left, and a micro-USB connector (J20) is near the bottom-right.

C23
 C79C80
 C81C82

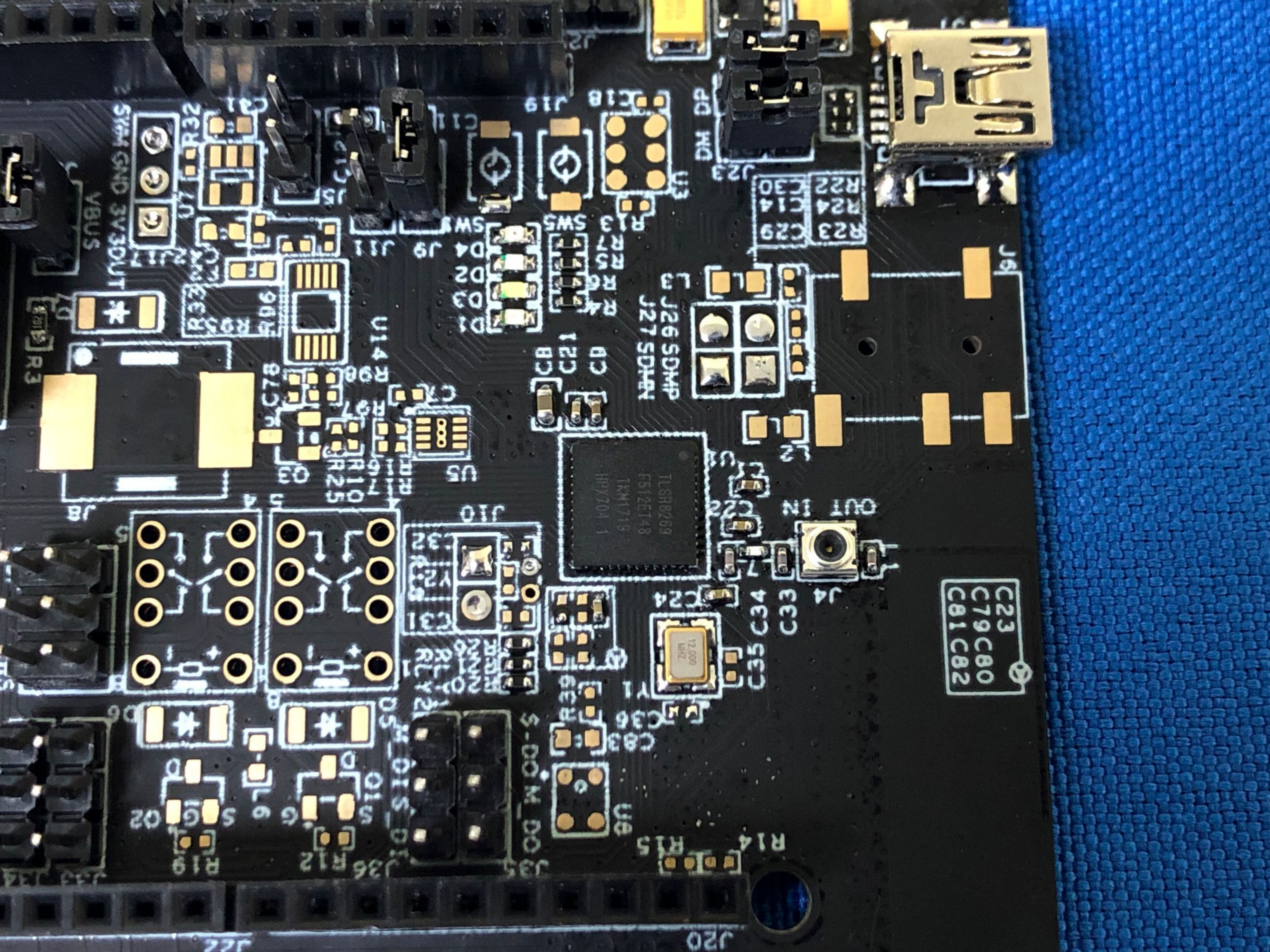
1 2 3 4 5 6 7 8 9 10 1

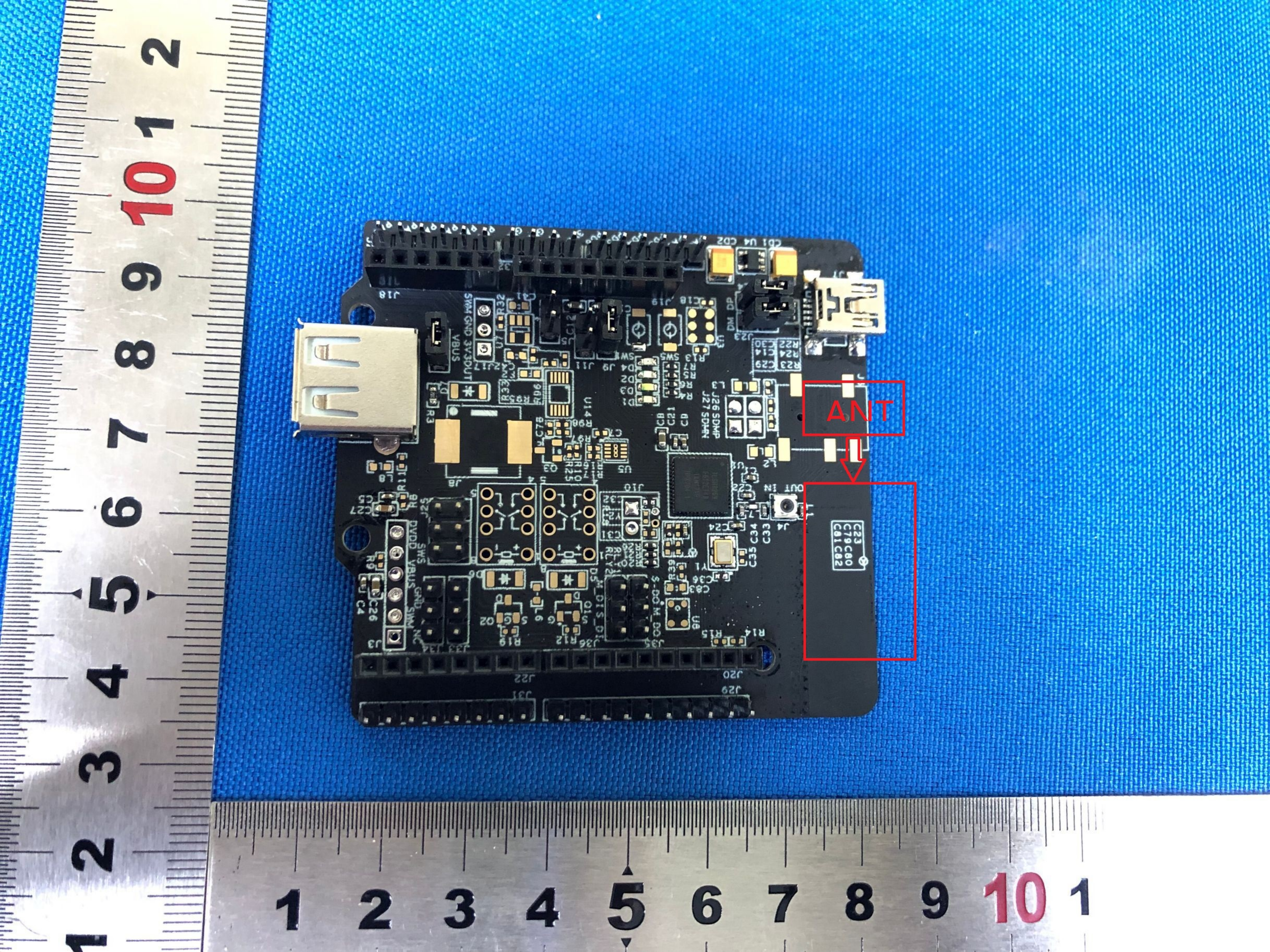
1 2 3 4 5 6 7 8 9 10 1 2



TELINK
SEMICONDUCTOR

TLSR826XDK48
C1T80A30_V2.0A.
2017-09-05





ANT

C23
C79
C80
C81
C82